



འབྲུག་གློག་ཐོ་ལས་འཛིན།

Bhutan Power Corporation Ltd.
Bhutan Power System Operator
Thimphu: Bhutan



Message No.: Enter your message number
From: Shift In-charge, Control Room

Date: 9-Jan-18
Time: 10:21

To
Managing Director, BPC. Email: gemtshering@bpc.bt
Director, O&MD, DGPC. Email: director.omb@drukgreen.com
General Manager, TD, BPC. Email: ktobgye@bpc.bt
General Manager, DCSD, BPC. Email: sandeeprai@bpc.bt

Sub: **Load Generation Balance Report of Yesterday (08-Jan-2018).**

Hours (BST)	Forecast		Actual		Hours (BST)	Forecast		Actual	
	Load	Generation	Load	Generation		Load	Generation	Load	Generation
0:00	248.80	337.70	260.88	348.73	12:00	291.60	337.70	292.79	310.13
0:15	256.90	337.70	241.58	348.84	12:15	290.50	337.70	294.95	309.52
0:30	256.40	337.70	239.62	328.95	12:30	289.90	337.70	291.04	310.37
0:45	255.00	337.70	234.51	329.28	12:45	284.40	337.70	298.01	310.49
1:00	256.60	337.70	247.14	329.09	13:00	284.00	337.70	304.08	307.61
1:15	255.80	337.70	240.11	329.05	13:15	283.10	337.70	295.10	310.40
1:30	253.50	337.70	247.96	329.27	13:30	281.20	337.70	290.99	309.50
1:45	255.60	337.70	258.52	328.88	13:45	271.40	337.70	273.48	312.10
2:00	255.60	337.70	256.25	329.20	14:00	281.60	337.70	289.76	310.87
2:15	256.50	337.70	253.48	329.29	14:15	279.10	337.70	297.33	310.22
2:30	255.90	337.70	254.55	329.96	14:30	278.80	337.70	299.57	309.61
2:45	254.40	337.70	249.92	329.23	14:45	272.30	337.70	298.29	310.96
3:00	254.70	337.70	256.32	328.84	15:00	268.70	337.70	291.24	306.01
3:15	250.60	337.70	256.14	328.82	15:15	270.10	337.70	294.02	312.21
3:30	252.90	337.70	252.29	329.47	15:30	269.30	337.70	294.88	311.52
3:45	253.80	337.70	253.22	329.03	15:45	273.90	337.70	308.50	312.11
4:00	253.30	337.70	261.05	329.45	16:00	277.80	337.70	310.79	310.29
4:15	250.50	337.70	257.84	329.52	16:15	277.20	337.70	304.95	310.20
4:30	254.60	337.70	264.12	329.57	16:30	286.50	337.70	309.36	321.38
4:45	256.30	337.70	255.36	328.74	16:45	288.90	337.70	313.59	320.73
5:00	261.40	337.70	260.09	328.52	17:00	292.70	351.90	317.26	320.86
5:15	264.20	337.70	267.82	320.98	17:15	293.60	343.10	323.20	330.73
5:30	265.10	337.70	267.19	320.45	17:30	300.60	343.10	335.77	356.85
5:45	266.10	351.90	268.37	334.37	17:45	310.20	343.10	342.98	356.51
6:00	264.40	351.90	273.40	334.53	18:00	335.70	343.10	353.65	357.63
6:15	269.90	351.90	274.28	333.78	18:15	342.70	343.10	360.21	356.10
6:30	278.20	351.90	275.91	334.01	18:30	342.30	343.10	360.88	356.12
6:45	277.90	351.90	277.30	334.14	18:45	336.10	343.10	364.01	356.27
7:00	291.90	351.90	297.91	333.45	19:00	337.20	343.10	361.39	357.47
7:15	301.10	351.90	311.32	333.37	19:15	343.40	343.10	357.95	355.88
7:30	304.70	351.90	316.27	334.97	19:30	345.80	343.10	350.61	354.94
7:45	307.60	351.90	320.52	335.45	19:45	348.40	343.10	348.15	353.57
8:00	306.80	351.90	323.38	332.13	20:00	350.00	343.10	341.91	354.16
8:15	307.70	351.90	324.59	333.09	20:15	347.90	343.10	341.09	354.16
8:30	308.50	351.90	320.51	332.77	20:30	335.50	343.10	328.07	354.39
8:45	306.60	351.90	314.39	333.20	20:45	320.70	343.10	332.89	355.04
9:00	302.90	337.70	318.76	332.95	21:00	324.60	343.10	330.66	354.75
9:15	253.60	337.70	313.20	312.67	21:15	318.20	343.10	326.84	355.80
9:30	306.40	337.70	313.75	310.74	21:30	283.70	343.10	309.73	374.76
9:45	298.70	337.70	308.83	308.95	21:45	270.60	343.10	303.38	375.80
10:00	297.40	337.70	315.41	308.86	22:00	257.50	343.10	299.83	373.38
10:15	297.30	337.70	302.64	308.55	22:15	252.30	343.10	297.06	358.42
10:30	295.70	337.70	292.58	308.55	22:30	254.10	343.10	296.52	358.27
10:45	291.50	337.70	299.55	309.43	22:45	258.70	338.30	280.05	358.81
11:00	292.70	337.70	285.08	309.35	23:00	273.20	338.30	282.88	358.70
11:15	291.80	337.70	301.88	308.23	23:15	270.60	338.30	275.40	357.09
11:30	291.60	337.70	299.90	309.50	23:30	271.00	338.30	275.41	357.41
11:45	291.60	337.70	284.20	308.97	23:45	270.80	338.30	271.43	357.41

Yours faithfully
Karma Choden

Coincidental peak load of Day(Last year):	
267.77 MW	8-Jan-17
Maximum Load till date:	
362.09 MW	14-Nov-17



འབྲུག་གློག་ལེ་ལས་འཛིན།

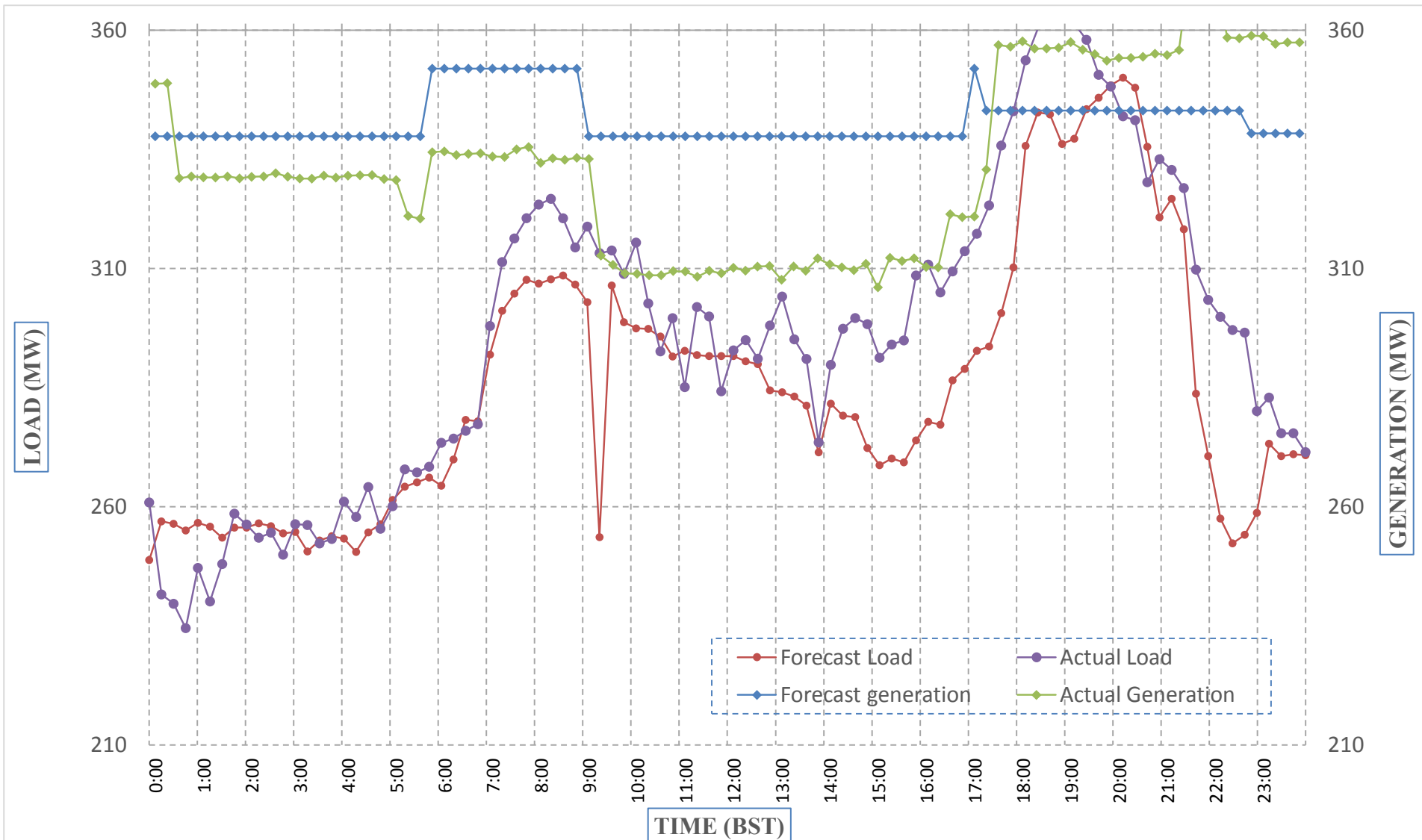
Bhutan Power Corporation Ltd.
 Bhutan Power System Operator
 Thimphu: Bhutan



Message No.: Enter your message number
 From: Shift In-charge, Control Room

Date: 9-Jan-18
 Time: 10:21

Forecast Generation & Load with Actual Generation & Load (08-Jan-2018).



Yours faithfully,
 Karma Choden

	MW	Coincidental peak load of Day(Last year):	
Peak Co-incident Generation(08-Jan-2018).	375.80	267.77 MW	8-Jan-17
Peak Co-incident Load(08-Jan-2018).	364.01	Maximum Load till date:	
		362.09 MW	14-Nov-17

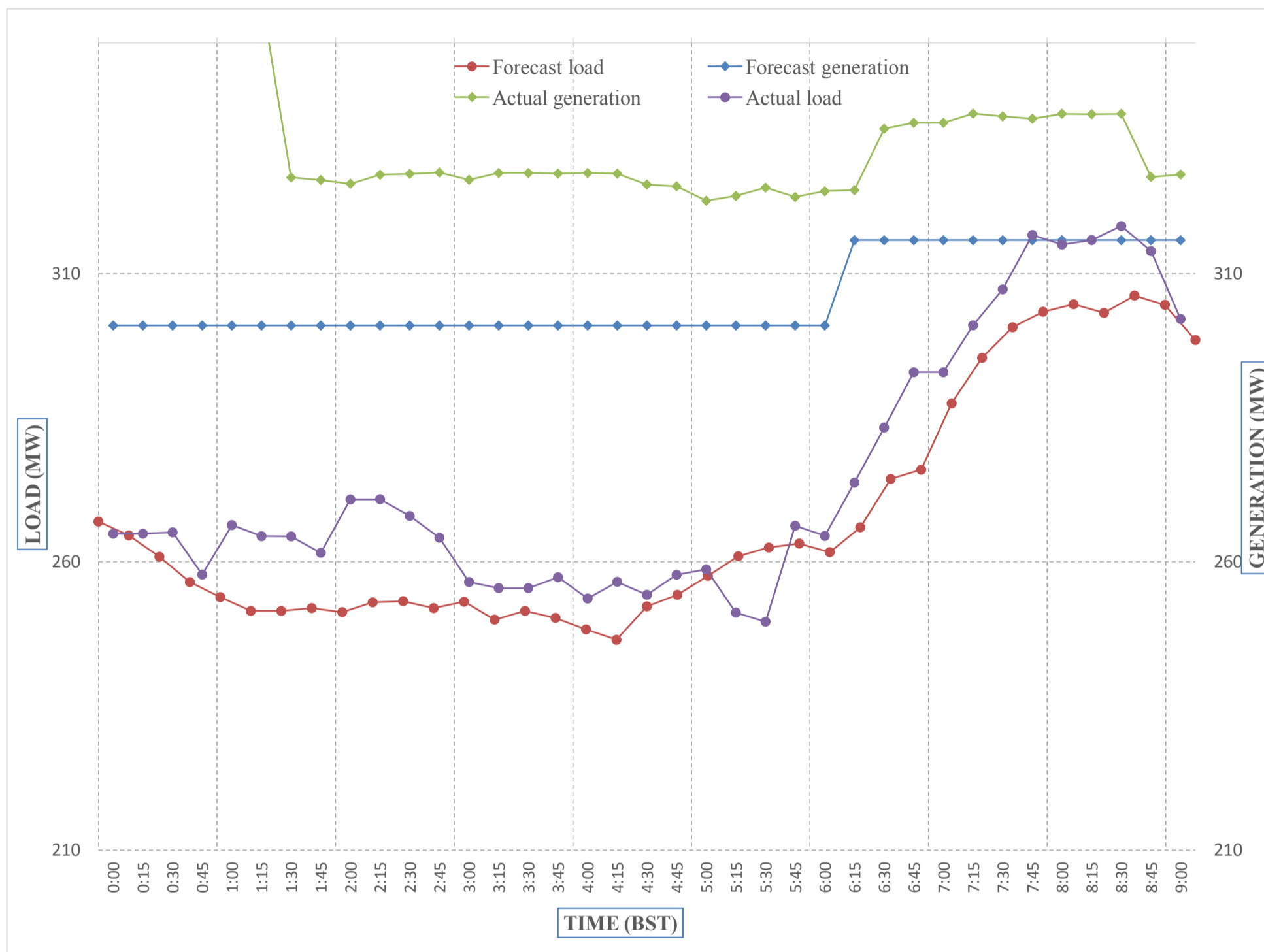
Telephone: +975-02335631; Fax: +975-02335632; Email: bhutansystemoperator@bpc.bt; www.bpc.bt



Message No.: Enter your message number
 From: Shift In-charge, Control Room

Date: 9-Jan-18
 Time: 10:21

Forecast Generation & Load with Actual Generation & Load of Today from 00:00hrs to 09:00hrs(09-Jan-2018).



Yours faithfully
 Karma Choden

Coincidental peak load of	
262.74 MW	9-Jan-18
Maximum Load till date:	
362.09 MW	14-Nov-17



ལྷན་སྐྱོད་ལྷན་ཁག་ལོ་ལས་འཛིན།

Bhutan Power Corporation Ltd.
Bhutan Power System Operator
Thimphu: Bhutan



Message No.: Enter your message number
From: Shift In-charge, Control Room

Date: 9-Jan-18
Time: 10:21

To
Managing Director, BPC. Email: gemtshering@bpc.bt
Director, O&MD, DGPC. Email: director.umd@drukgreen.com
General Manager, TD, BPC. Email: thinleygyeltshen@bpc.bt
General Manager, DCSD, BPC. Email: sandeeprai@bpc.bt

Sub: Load Generation Balance Report of Today (09-Jan-2018).

Hours (BST)	Forecast		Actual	
	Load	Generation	Load	Generation
0:00	267.00	301.00	264.91	356.96
0:15	264.60	301.00	264.91	356.96
0:30	260.90	301.00	265.14	357.91
0:45	256.50	301.00	257.80	357.88
1:00	253.90	301.00	266.39	357.94
1:15	251.50	301.00	264.47	357.94
1:30	251.50	301.00	264.44	326.69
1:45	252.00	301.00	261.60	326.25
2:00	251.30	301.00	270.84	325.60
2:15	253.00	301.00	270.88	327.16
2:30	253.20	301.00	267.97	327.32
2:45	252.00	301.00	264.21	327.55
3:00	253.10	301.00	256.52	326.28
3:15	250.00	301.00	255.48	327.46
3:30	251.50	301.00	255.48	327.46
3:45	250.30	301.00	257.35	327.37
4:00	248.30	301.00	253.66	327.46
4:15	246.50	301.00	256.55	327.36
4:30	252.30	301.00	254.30	325.45
4:45	254.30	301.00	257.77	325.15
5:00	257.60	301.00	258.71	322.65
5:15	261.00	301.00	251.23	323.47
5:30	262.50	301.00	249.64	324.92
5:45	263.20	301.00	266.27	323.29
6:00	261.70	301.00	264.52	324.30
6:15	266.00	315.80	273.77	324.48
6:30	274.40	315.80	283.31	335.13
6:45	276.00	315.80	292.90	336.16
7:00	287.50	315.80	292.90	336.16
7:15	295.40	315.80	301.04	337.76
7:30	300.70	315.80	307.27	337.27
7:45	303.40	315.80	316.70	336.88
8:00	304.70	315.80	315.05	337.73
8:15	303.20	315.80	315.84	337.66
8:30	306.20	315.80	318.25	337.73
8:45	304.60	315.80	313.91	326.77
9:00	298.50	315.80	302.15	327.20

Coincidental peak load of Day(Last year):	
262.74 MW	9-Jan-18
Maximum Load till date:	
362.09 MW	14-Nov-17

Yours faithfully,
Karma Choden



འབྲུག་གི་འོ་ལྷན་ཁག་ལེ་སྐོར་ལྷན་ཁག་
Bhutan Power Corporation Ltd.
Bhutan Power System Operator
 Thimphu: Bhutan



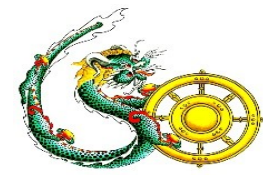
Message No.: Enter your message number **Date:** 9-Jan-18
From: Shift In-charge, Control Room **Time:** 10:21

To
 Managing Director, BPC. Email: gemtshering@bpc.bt
 Director, O&MD, DGPC. Email: director.umd@drukgreen.com
 General Manager, TD, BPC. Email: ktobgye@bpc.bt
 Advisor, BPC. Email: bharattamang@bpc.bt

Sub: **Load Generation Balance Report of Tomorrow (10-Jan-2018).**

Hours (BST)	Forecast		Hours (BST)	Forecast	
	Load	Generation		Load	Generation
0:00	265.10	299.60	12:00	293.40	299.60
0:15	258.00	299.60	12:15	294.10	299.60
0:30	256.10	299.60	12:30	292.00	299.60
0:45	252.80	299.60	12:45	289.90	299.60
1:00	253.90	299.60	13:00	285.60	299.60
1:15	248.70	299.60	13:15	284.90	299.60
1:30	251.00	299.60	13:30	284.40	299.60
1:45	253.00	299.60	13:45	276.70	299.60
2:00	252.80	299.60	14:00	286.40	299.60
2:15	253.80	299.60	14:15	285.10	299.60
2:30	253.90	299.60	14:30	286.90	299.60
2:45	251.40	299.60	14:45	283.10	299.60
3:00	252.90	299.60	15:00	278.10	299.60
3:15	251.00	299.60	15:15	279.80	299.60
3:30	253.40	299.60	15:30	279.00	299.60
3:45	252.00	299.60	15:45	283.40	299.60
4:00	250.10	299.60	16:00	286.80	299.60
4:15	249.40	299.60	16:15	286.70	299.60
4:30	253.60	299.60	16:30	294.10	299.60
4:45	255.70	299.60	16:45	295.60	299.60
5:00	258.90	299.60	17:00	302.00	299.60
5:15	262.90	299.60	17:15	304.60	314.10
5:30	264.20	299.60	17:30	313.70	314.10
6:45	263.30	299.60	17:45	323.10	314.10
6:00	265.00	299.60	18:00	342.80	314.10
6:15	267.80	314.10	18:15	349.90	314.10
6:30	275.60	314.10	18:30	347.90	314.10
6:45	277.40	314.10	18:45	344.10	314.10
7:00	290.40	314.10	19:00	350.50	314.10
7:15	300.10	314.10	19:15	371.80	314.10
7:30	305.50	314.10	19:30	376.00	314.10
7:45	308.30	314.10	19:45	363.50	314.10
8:00	308.20	314.10	20:00	345.80	314.10
8:15	308.40	314.10	20:15	325.50	314.10
8:30	309.90	314.10	20:30	286.50	314.10
8:45	309.00	314.10	20:45	257.30	314.10
9:00	304.30	314.10	21:00	263.00	314.10
9:15	280.80	299.60	21:15	275.00	299.60
9:30	322.00	299.60	21:30	288.40	299.60
9:45	300.20	299.60	21:45	302.90	299.60
10:00	297.60	299.60	22:00	297.20	299.60
10:15	296.00	299.60	22:15	300.80	299.60
10:30	294.60	299.60	22:30	296.80	299.60
10:45	294.30	299.60	22:45	285.40	299.60
11:00	291.20	299.60	23:00	283.80	299.60
11:15	293.80	299.60	23:15	276.40	299.60
11:30	295.20	299.60	23:30	271.70	299.60
11:45	290.60	299.60	23:45	269.20	299.60

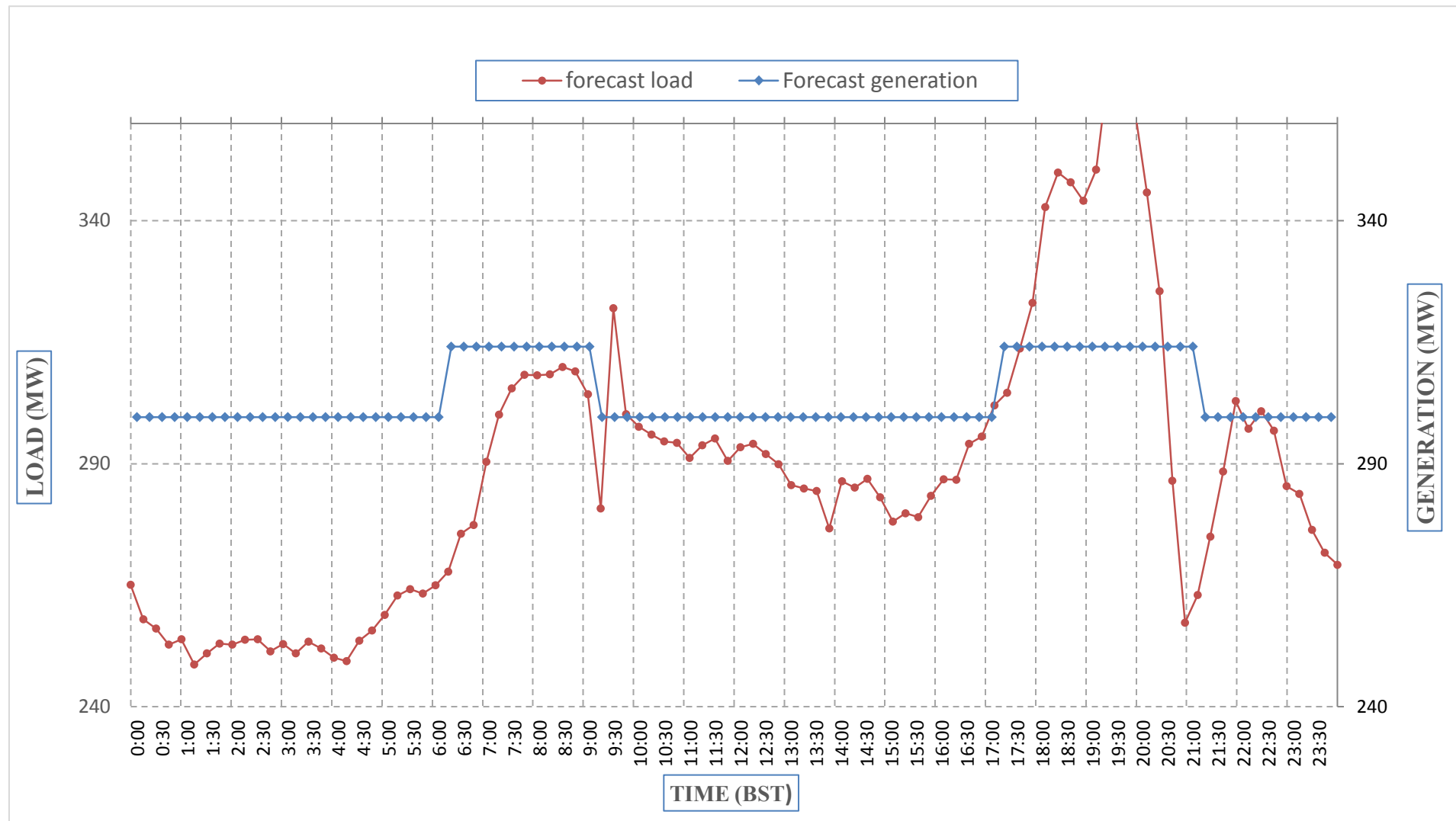
Yours faithfully,
 Karma Choden



Message No.: Enter your message number
 From: Shift In-charge, Control Room

Date: 9-Jan-18
 Time: 10:21

Scheduled Generation & Load Forecast for Tomorrow (10-Jan-2018).



Yours faithfully,
 Karma Choden

	MW
Scheduled Peak Generation(10-Jan-2018).	314.10
Forecast Peak Load(10-Jan-2018).	376.00



འབྲུག་གྲོག་ལེ་ལས་འཛིན།
Bhutan Power Corporation Ltd.
Bhutan Power System Operator
 Thimphu: Bhutan



Message No.: Enter your message number **Date:** 9-Jan-18
From: Shift In-charge, Control Room **Time:** 10:21

To
 Managing Director, BPC. Email: gemtshering@bpc.bt
 Director, O&MD, DGPC. Email: director.umd@drukgreen.com
 General Manager, TD, BPC. Email: ktobgye@bpc.bt
 Advisor, BPC. Email: bharattamang@bpc.bt

Sub: Scheduled Generation and Actual Generation of Dagachhu (08-Jan-2018).

Hours (BST)	Forecast Generation	Actual Generation	Hours (BST)	Forecast Generation	Actual Generation
0:00	23.50	22.31	12:00	23.50	23.01
0:15	23.50	22.31	12:15	23.50	23.04
0:30	23.50	22.32	12:30	23.50	23.04
0:45	23.50	22.32	12:45	23.50	23.11
1:00	23.50	22.53	13:00	23.50	23.04
1:15	23.50	22.52	13:15	23.50	23.06
1:30	23.50	22.55	13:30	23.50	23.05
1:45	23.50	22.55	13:45	23.50	23.03
2:00	23.50	22.52	14:00	23.50	23.03
2:15	23.50	22.54	14:15	23.50	23.03
2:30	23.50	22.55	14:30	23.50	23.11
2:45	23.50	22.55	14:45	23.50	23.05
3:00	23.50	22.54	15:00	23.50	23.05
3:15	23.50	22.53	15:15	23.50	23.09
3:30	23.50	22.52	15:30	23.50	23.03
3:45	23.50	22.52	15:45	23.50	23.02
4:00	23.50	22.52	16:00	23.50	23.02
4:15	23.50	23.05	16:15	23.50	23.03
4:30	23.50	23.04	16:30	23.50	23.02
4:45	23.50	23.07	16:45	23.50	23.03
5:00	23.50	21.99	17:00	23.50	23.04
5:15	23.50	22.00	17:15	23.50	23.02
5:30	23.50	21.97	17:30	23.50	23.07
6:45	23.50	23.01	17:45	23.50	23.07
6:00	23.50	23.01	18:00	23.50	23.03
6:15	23.50	23.00	18:15	23.50	23.03
6:30	23.50	23.01	18:30	23.50	23.05
6:45	23.50	23.06	18:45	23.50	23.05
7:00	23.50	23.03	19:00	23.50	23.08
7:15	23.50	23.03	19:15	23.50	23.04
7:30	23.50	23.05	19:30	23.50	23.03
7:45	23.50	23.01	19:45	23.50	23.03
8:00	23.50	23.07	20:00	23.50	23.05
8:15	23.50	23.05	20:15	23.50	23.05
8:30	23.50	23.03	20:30	23.50	23.05
8:45	23.50	23.04	20:45	23.50	23.03
9:00	23.50	23.03	21:00	23.50	23.03
9:15	23.50	23.06	21:15	23.50	23.04
9:30	23.50	23.04	21:30	23.50	23.03
9:45	23.50	23.03	21:45	23.50	23.03
10:00	23.50	23.04	22:00	23.50	22.52
10:15	23.50	23.05	22:15	23.50	21.99
10:30	23.50	23.03	22:30	23.50	22.30
10:45	23.50	23.03	22:45	23.50	22.30
11:00	23.50	23.03	23:00	23.50	22.51
11:15	23.50	23.03	23:15	23.50	22.51
11:30	23.50	23.06	23:30	23.50	22.84
11:45	23.50	23.03	23:45	23.50	22.81

Yours faithfully,
 Karma Choden



འབྲུག་གྲོག་མེ་ལས་འཛིན།

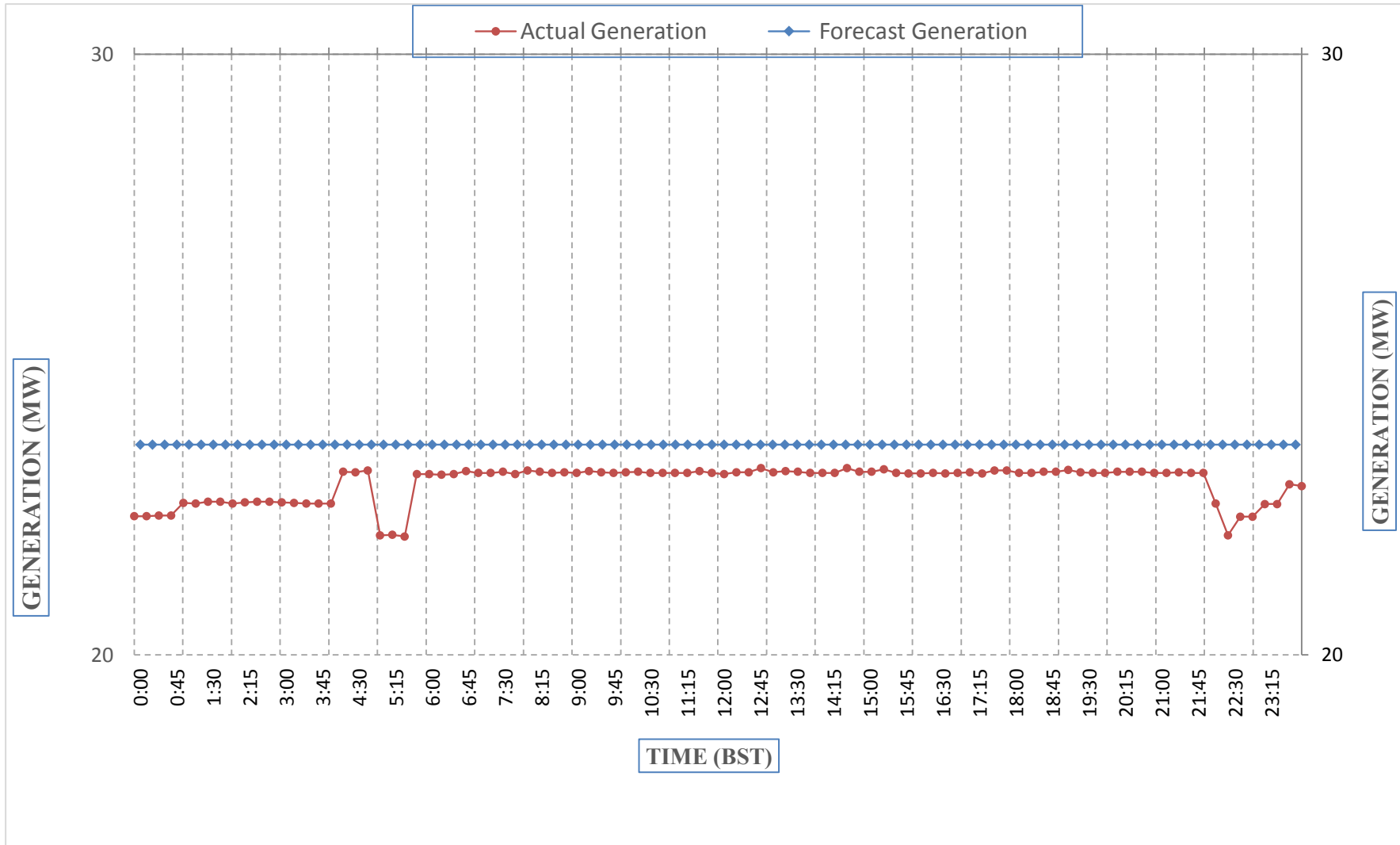
Bhutan Power Corporation Ltd.
Bhutan Power System Operator
Thimphu: Bhutan



Message No.: Enter your message number
From: Shift In-charge, Control Room

Date: 9-Jan-18
Time: 10:21

Scheduled Generation & Actual Generation of Dagachhu(08-Jan-2018).



Yours faithfully,
Karma Choden