



འབྲུག་གློག་ཐོ་ལས་འཛིན།

Bhutan Power Corporation Ltd.  
Bhutan Power System Operator  
Thimphu: Bhutan



Message No.: Enter your message number  
From: Shift In-charge, Control Room

Date: 8-Jan-18  
Time: 10:28

To  
Managing Director, BPC. Email: gemtshering@bpc.bt  
Director, O&MD, DGPC. Email: director.omb@drukgreen.com  
General Manager, TD, BPC. Email: ktobgye@bpc.bt  
General Manager, DCSD, BPC. Email: sandeeprai@bpc.bt

Sub: **Load Generation Balance Report of Yesterday (07-Jan-2018).**

| Hours (BST) | Forecast |            | Actual |            | Hours (BST) | Forecast |            | Actual |            |
|-------------|----------|------------|--------|------------|-------------|----------|------------|--------|------------|
|             | Load     | Generation | Load   | Generation |             | Load     | Generation | Load   | Generation |
| 0:00        | 341.20   | 219.40     | 251.94 | 320.35     | 12:00       | 341.40   | 292.80     | 295.16 | 321.18     |
| 0:15        | 341.20   | 222.30     | 263.13 | 320.41     | 12:15       | 341.40   | 290.80     | 298.18 | 320.43     |
| 0:30        | 341.20   | 226.80     | 251.79 | 315.84     | 12:30       | 341.40   | 291.70     | 297.77 | 320.12     |
| 0:45        | 343.10   | 235.60     | 250.14 | 317.88     | 12:45       | 341.40   | 288.90     | 290.81 | 319.07     |
| 1:00        | 343.10   | 248.20     | 244.66 | 316.20     | 13:00       | 341.40   | 287.40     | 284.84 | 319.18     |
| 1:15        | 343.10   | 255.50     | 239.47 | 319.65     | 13:15       | 341.40   | 286.10     | 268.27 | 317.86     |
| 1:30        | 343.10   | 257.60     | 241.79 | 320.77     | 13:30       | 341.40   | 283.10     | 282.78 | 320.56     |
| 1:45        | 343.10   | 255.70     | 240.09 | 321.13     | 13:45       | 341.40   | 271.10     | 287.20 | 320.48     |
| 2:00        | 343.10   | 256.00     | 242.95 | 321.55     | 14:00       | 341.40   | 283.70     | 288.08 | 320.51     |
| 2:15        | 341.40   | 258.00     | 245.65 | 321.47     | 14:15       | 341.40   | 285.00     | 292.55 | 348.42     |
| 2:30        | 341.40   | 257.30     | 244.26 | 320.50     | 14:30       | 341.40   | 285.60     | 289.90 | 351.35     |
| 2:45        | 341.40   | 256.00     | 247.47 | 320.62     | 14:45       | 341.40   | 274.50     | 290.95 | 350.55     |
| 3:00        | 341.40   | 256.30     | 254.00 | 321.66     | 15:00       | 341.40   | 270.30     | 289.25 | 350.80     |
| 3:15        | 341.40   | 253.30     | 247.95 | 321.78     | 15:15       | 341.40   | 271.30     | 275.50 | 350.00     |
| 3:30        | 341.40   | 254.10     | 244.43 | 320.45     | 15:30       | 341.40   | 274.20     | 275.98 | 349.59     |
| 3:45        | 341.40   | 255.40     | 243.21 | 322.64     | 15:45       | 341.40   | 274.20     | 284.14 | 349.22     |
| 4:00        | 341.40   | 255.60     | 234.57 | 322.44     | 16:00       | 341.40   | 278.90     | 274.02 | 349.60     |
| 4:15        | 341.40   | 256.50     | 236.31 | 320.63     | 16:15       | 341.40   | 275.40     | 276.72 | 349.63     |
| 4:30        | 341.40   | 258.60     | 247.99 | 319.63     | 16:30       | 341.40   | 282.10     | 287.72 | 348.97     |
| 4:45        | 341.40   | 257.80     | 245.74 | 321.78     | 16:45       | 341.40   | 286.60     | 286.02 | 349.79     |
| 5:00        | 341.40   | 262.70     | 237.45 | 334.20     | 17:00       | 341.40   | 289.80     | 300.49 | 349.77     |
| 5:15        | 341.40   | 264.90     | 250.64 | 334.97     | 17:15       | 341.40   | 286.00     | 307.90 | 350.23     |
| 5:30        | 341.40   | 265.60     | 257.11 | 334.06     | 17:30       | 341.40   | 293.30     | 317.58 | 363.98     |
| 5:45        | 341.40   | 265.50     | 255.01 | 334.05     | 17:45       | 341.40   | 298.90     | 332.56 | 363.79     |
| 6:00        | 341.40   | 268.50     | 256.58 | 336.35     | 18:00       | 341.40   | 331.70     | 342.59 | 363.91     |
| 6:15        | 341.40   | 272.00     | 258.95 | 334.64     | 18:15       | 341.40   | 337.30     | 344.88 | 363.55     |
| 6:30        | 341.40   | 278.40     | 260.88 | 334.20     | 18:30       | 341.40   | 337.10     | 342.12 | 363.30     |
| 6:45        | 341.40   | 274.30     | 273.16 | 333.83     | 18:45       | 341.40   | 325.10     | 344.77 | 363.54     |
| 7:00        | 341.40   | 292.20     | 274.56 | 333.68     | 19:00       | 341.40   | 334.10     | 333.13 | 363.21     |
| 7:15        | 341.40   | 301.20     | 281.62 | 335.52     | 19:15       | 341.40   | 334.60     | 336.25 | 363.34     |
| 7:30        | 341.40   | 304.80     | 287.67 | 334.61     | 19:30       | 341.40   | 320.50     | 331.08 | 363.66     |
| 7:45        | 341.40   | 305.30     | 292.47 | 334.51     | 19:45       | 341.40   | 320.80     | 330.73 | 362.88     |
| 8:00        | 341.40   | 304.90     | 296.11 | 332.62     | 20:00       | 341.40   | 332.40     | 315.12 | 362.73     |
| 8:15        | 341.40   | 305.10     | 300.88 | 333.81     | 20:15       | 341.40   | 334.00     | 315.48 | 362.76     |
| 8:30        | 341.40   | 305.50     | 299.46 | 334.20     | 20:30       | 341.40   | 330.40     | 315.09 | 362.76     |
| 8:45        | 341.40   | 301.70     | 301.15 | 333.28     | 20:45       | 341.40   | 318.60     | 312.59 | 362.90     |
| 9:00        | 341.40   | 300.30     | 284.78 | 336.37     | 21:00       | 341.40   | 341.70     | 308.67 | 362.48     |
| 9:15        | 341.40   | 294.10     | 298.85 | 318.51     | 21:15       | 338.50   | 356.10     | 304.60 | 349.64     |
| 9:30        | 341.40   | 308.40     | 296.66 | 321.09     | 21:30       | 338.50   | 341.50     | 300.02 | 349.28     |
| 9:45        | 341.40   | 306.60     | 287.98 | 320.45     | 21:45       | 338.50   | 328.10     | 294.29 | 348.84     |
| 10:00       | 341.40   | 300.30     | 275.71 | 321.52     | 22:00       | 338.50   | 316.00     | 289.12 | 349.02     |
| 10:15       | 341.40   | 300.80     | 285.64 | 320.11     | 22:15       | 338.50   | 297.10     | 269.91 | 348.71     |
| 10:30       | 341.40   | 300.50     | 280.73 | 320.84     | 22:30       | 338.50   | 256.50     | 261.59 | 344.74     |
| 10:45       | 341.40   | 297.60     | 290.46 | 320.31     | 22:45       | 338.50   | 235.40     | 274.35 | 349.01     |
| 11:00       | 341.40   | 296.90     | 288.72 | 319.57     | 23:00       | 338.50   | 231.20     | 277.09 | 346.80     |
| 11:15       | 341.40   | 295.40     | 283.01 | 321.54     | 23:15       | 338.50   | 228.20     | 270.66 | 349.12     |
| 11:30       | 341.40   | 296.00     | 288.13 | 320.59     | 23:30       | 262.80   | 229.70     | 267.29 | 349.35     |
| 11:45       | 341.40   | 293.20     | 294.43 | 319.51     | 23:45       | 262.80   | 239.80     | 264.03 | 348.76     |

Yours faithfully  
Karma Choden

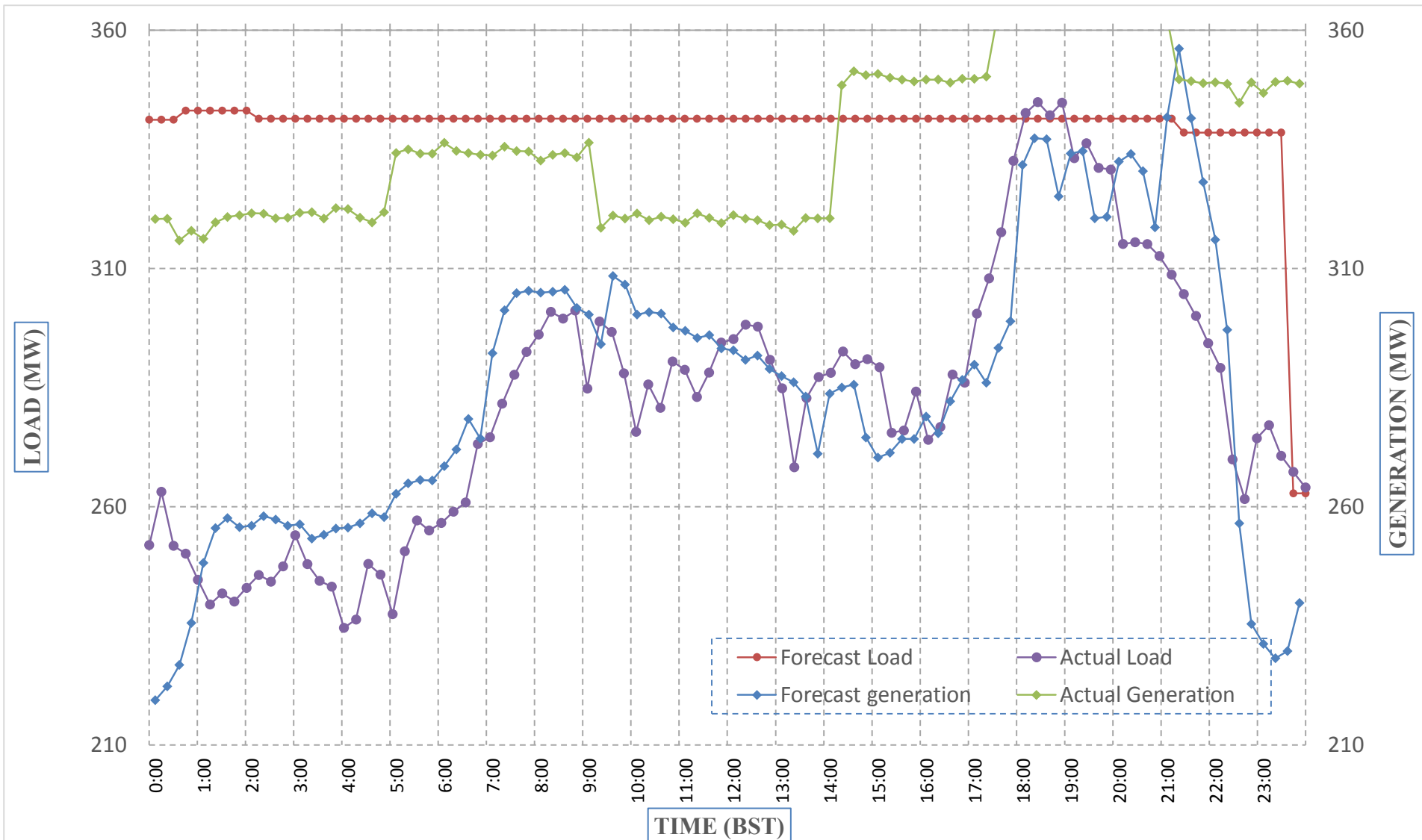
|                                           |           |
|-------------------------------------------|-----------|
| Coincidental peak load of Day(Last year): |           |
| 279.51 MW                                 | 7-Jan-17  |
| Maximum Load till date:                   |           |
| 362.09 MW                                 | 14-Nov-17 |



**Message No.:** Enter your message number  
**From:** Shift In-charge, Control Room

**Date:** 8-Jan-18  
**Time:** 10:28

**Forecast Generation & Load with Actual Generation & Load (07-Jan-2018).**



Yours faithfully,  
 Karma Choden

|                                                  |               |                                                  |           |
|--------------------------------------------------|---------------|--------------------------------------------------|-----------|
|                                                  | <b>MW</b>     | <b>Coincidental peak load of Day(Last year):</b> |           |
| <b>Peak Co-incident Generation(07-Jan-2018).</b> | <b>363.98</b> | 279.51 MW                                        | 7-Jan-17  |
| <b>Peak Co-incident Load(07-Jan-2018).</b>       | <b>344.88</b> |                                                  |           |
|                                                  |               | <b>Maximum Load till date:</b>                   |           |
|                                                  |               | 362.09 MW                                        | 14-Nov-17 |



འབྲུག་གྲོག་མེ་ལས་འཛིན།

Bhutan Power Corporation Ltd.  
Bhutan Power System Operator  
Thimphu: Bhutan



Message No.: Enter your message number  
From: Shift In-charge, Control Room

Date: 8-Jan-18  
Time: 10:28

To  
Managing Director, BPC. Email: gemtshering@bpc.bt  
Director, O&MD, DGPC. Email: director.umd@drukgreen.com  
General Manager, TD, BPC. Email: thinleygyeltshen@bpc.bt  
General Manager, DCSD, BPC. Email: sandeeprai@bpc.bt

Sub: Load Generation Balance Report of Today (08-Jan-2018).

| Hours (BST) | Forecast |            | Actual |            |
|-------------|----------|------------|--------|------------|
|             | Load     | Generation | Load   | Generation |
| 0:00        | 248.80   | 337.70     | 260.88 | 348.73     |
| 0:15        | 256.90   | 337.70     | 241.58 | 348.84     |
| 0:30        | 256.40   | 337.70     | 239.62 | 328.95     |
| 0:45        | 255.00   | 337.70     | 234.51 | 329.28     |
| 1:00        | 256.60   | 337.70     | 247.14 | 329.09     |
| 1:15        | 255.80   | 337.70     | 240.11 | 329.05     |
| 1:30        | 253.50   | 337.70     | 247.96 | 329.27     |
| 1:45        | 255.60   | 337.70     | 258.52 | 328.88     |
| 2:00        | 255.60   | 337.70     | 256.25 | 329.20     |
| 2:15        | 256.50   | 337.70     | 253.48 | 329.29     |
| 2:30        | 255.90   | 337.70     | 254.55 | 329.96     |
| 2:45        | 254.40   | 337.70     | 249.92 | 329.23     |
| 3:00        | 254.70   | 337.70     | 256.32 | 328.84     |
| 3:15        | 250.60   | 337.70     | 256.14 | 328.82     |
| 3:30        | 252.90   | 337.70     | 252.29 | 329.47     |
| 3:45        | 253.80   | 337.70     | 253.22 | 329.03     |
| 4:00        | 253.30   | 337.70     | 261.05 | 329.45     |
| 4:15        | 250.50   | 337.70     | 257.84 | 329.52     |
| 4:30        | 254.60   | 337.70     | 264.12 | 329.57     |
| 4:45        | 256.30   | 337.70     | 255.36 | 328.74     |
| 5:00        | 261.40   | 337.70     | 260.09 | 328.52     |
| 5:15        | 264.20   | 337.70     | 267.82 | 320.98     |
| 5:30        | 265.10   | 337.70     | 267.19 | 320.45     |
| 5:45        | 266.10   | 351.90     | 268.37 | 334.37     |
| 6:00        | 264.40   | 351.90     | 273.40 | 334.53     |
| 6:15        | 269.90   | 351.90     | 274.28 | 333.78     |
| 6:30        | 278.20   | 351.90     | 275.91 | 334.01     |
| 6:45        | 277.90   | 351.90     | 277.30 | 334.14     |
| 7:00        | 291.90   | 351.90     | 297.91 | 333.45     |
| 7:15        | 301.10   | 351.90     | 311.32 | 333.37     |
| 7:30        | 304.70   | 351.90     | 316.27 | 334.97     |
| 7:45        | 307.60   | 351.90     | 320.52 | 335.45     |
| 8:00        | 306.80   | 351.90     | 323.38 | 332.13     |
| 8:15        | 307.70   | 351.90     | 324.59 | 333.09     |
| 8:30        | 308.50   | 351.90     | 320.51 | 332.77     |
| 8:45        | 306.60   | 351.90     | 314.39 | 333.20     |
| 9:00        | 302.90   | 337.70     | 318.76 | 332.95     |

Yours faithfully,  
Karma Choden

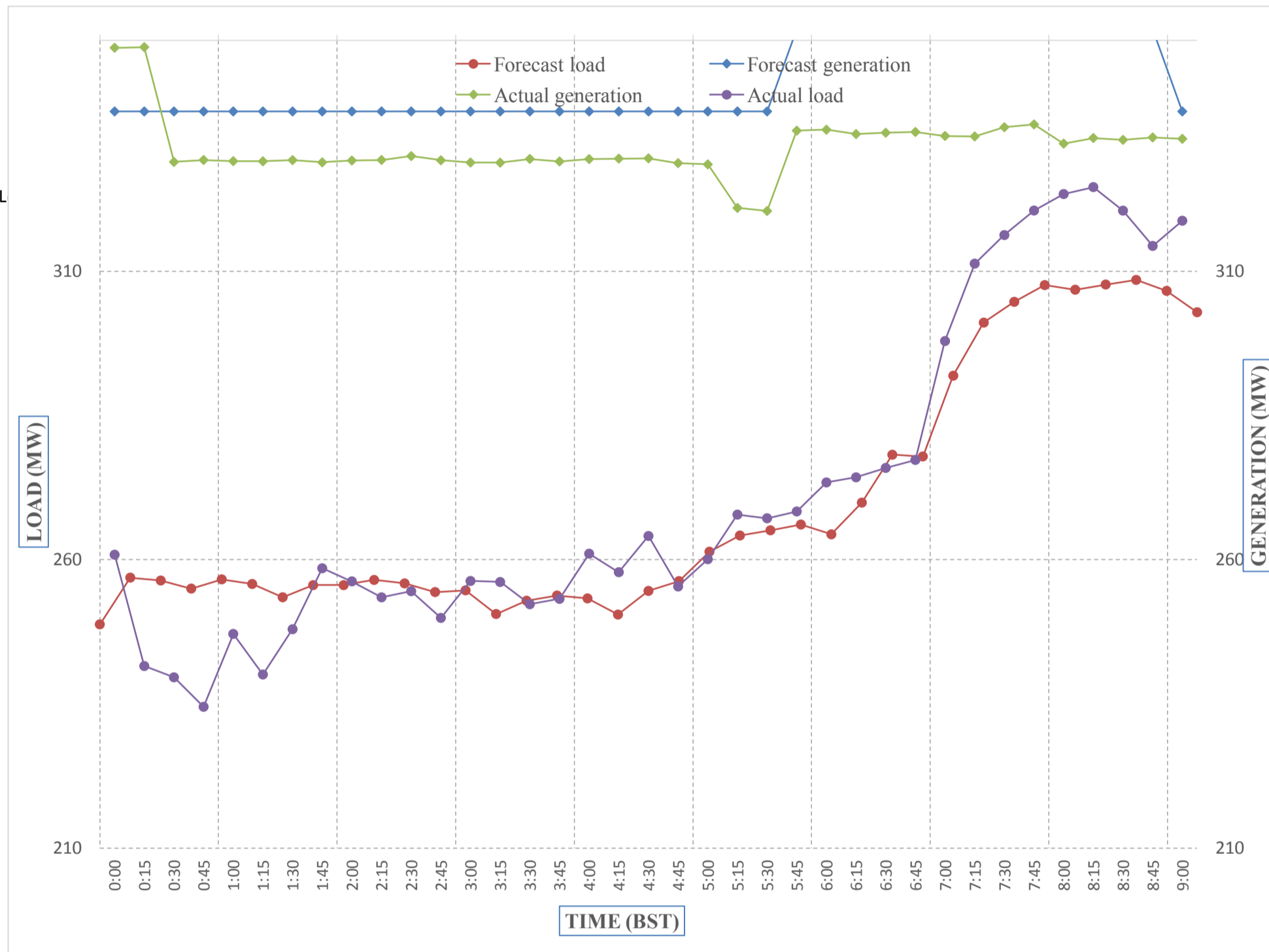
|                                           |           |
|-------------------------------------------|-----------|
| Coincidental peak load of Day(Last year): |           |
| 267.77 MW                                 | 8-Jan-18  |
| Maximum Load till date:                   |           |
| 362.09 MW                                 | 14-Nov-17 |



Message No.: Enter your message number  
 From: Shift In-charge, Control Room

1/8/2018 10:28 8-Jan-18  
 1/8/2018 10:28 10:28

**Forecast Generation & Load with Actual Generation & Load of Today from 00:00hrs to 09:00hrs(08-Jan-2018).**



Yours faithfully  
 Karma Choden

|                                  |          |
|----------------------------------|----------|
| <b>Coincidental peak load of</b> |          |
| 267.77 MW                        | 8-Jan-18 |

|                                |           |
|--------------------------------|-----------|
| <b>Maximum Load till date:</b> |           |
| 362.09 MW                      | 14-Nov-17 |



འབྲུག་གི་འོ་ལྷན་ཁང་།  
**Bhutan Power Corporation Ltd.**  
**Bhutan Power System Operator**  
 Thimphu: Bhutan



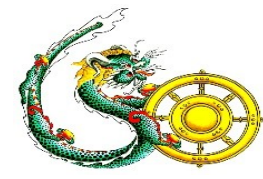
**Message No.:** Enter your message number **Date:** 8-Jan-18  
**From:** Shift In-charge, Control Room **Time:** 10:28

**To**  
 Managing Director, BPC. Email: gemtshering@bpc.bt  
 Director, O&MD, DGPC. Email: director.umd@drukgreen.com  
 General Manager, TD, BPC. Email: ktobgye@bpc.bt  
 Advisor, BPC. Email: bharattamang@bpc.bt

**Sub:** Load Generation Balance Report of Tomorrow (09-Jan-2018).

| Hours (BST) | Forecast |            | Hours (BST) | Forecast |            |
|-------------|----------|------------|-------------|----------|------------|
|             | Load     | Generation |             | Load     | Generation |
| 0:00        | 267.00   | 301.00     | 12:00       | 293.10   | 301.00     |
| 0:15        | 264.60   | 301.00     | 12:15       | 292.60   | 301.00     |
| 0:30        | 260.90   | 301.00     | 12:30       | 291.30   | 301.00     |
| 0:45        | 256.50   | 301.00     | 12:45       | 286.40   | 301.00     |
| 1:00        | 253.90   | 301.00     | 13:00       | 280.10   | 301.00     |
| 1:15        | 251.50   | 301.00     | 13:15       | 282.00   | 301.00     |
| 1:30        | 251.50   | 301.00     | 13:30       | 283.50   | 301.00     |
| 1:45        | 252.00   | 301.00     | 13:45       | 276.30   | 301.00     |
| 2:00        | 251.30   | 301.00     | 14:00       | 284.10   | 301.00     |
| 2:15        | 253.00   | 301.00     | 14:15       | 282.50   | 301.00     |
| 2:30        | 253.20   | 301.00     | 14:30       | 282.30   | 301.00     |
| 2:45        | 252.00   | 301.00     | 14:45       | 277.10   | 301.00     |
| 3:00        | 253.10   | 301.00     | 15:00       | 273.80   | 301.00     |
| 3:15        | 250.00   | 301.00     | 15:15       | 272.90   | 301.00     |
| 3:30        | 251.50   | 301.00     | 15:30       | 271.70   | 301.00     |
| 3:45        | 250.30   | 301.00     | 15:45       | 276.90   | 301.00     |
| 4:00        | 248.30   | 301.00     | 16:00       | 278.20   | 301.00     |
| 4:15        | 246.50   | 301.00     | 16:15       | 278.50   | 301.00     |
| 4:30        | 252.30   | 301.00     | 16:30       | 287.60   | 301.00     |
| 4:45        | 254.30   | 301.00     | 16:45       | 289.70   | 301.00     |
| 5:00        | 257.60   | 301.00     | 17:00       | 294.90   | 301.00     |
| 5:15        | 261.00   | 301.00     | 17:15       | 297.50   | 315.80     |
| 5:30        | 262.50   | 301.00     | 17:30       | 305.90   | 315.80     |
| 6:45        | 263.20   | 301.00     | 17:45       | 315.50   | 315.80     |
| 6:00        | 261.70   | 301.00     | 18:00       | 337.90   | 315.80     |
| 6:15        | 266.00   | 315.80     | 18:15       | 344.10   | 315.80     |
| 6:30        | 274.40   | 315.80     | 18:30       | 342.60   | 315.80     |
| 6:45        | 276.00   | 315.80     | 18:45       | 338.40   | 315.80     |
| 7:00        | 287.50   | 315.80     | 19:00       | 341.90   | 315.80     |
| 7:15        | 295.40   | 315.80     | 19:15       | 357.30   | 315.80     |
| 7:30        | 300.70   | 315.80     | 19:30       | 359.80   | 315.80     |
| 7:45        | 303.40   | 315.80     | 19:45       | 350.70   | 315.80     |
| 8:00        | 304.70   | 315.80     | 20:00       | 346.80   | 315.80     |
| 8:15        | 303.20   | 315.80     | 20:15       | 342.70   | 315.80     |
| 8:30        | 306.20   | 315.80     | 20:30       | 316.90   | 315.80     |
| 8:45        | 304.60   | 315.80     | 20:45       | 280.30   | 315.80     |
| 9:00        | 298.50   | 315.80     | 21:00       | 269.80   | 315.80     |
| 9:15        | 250.50   | 301.00     | 21:15       | 267.40   | 315.80     |
| 9:30        | 313.30   | 301.00     | 21:30       | 268.00   | 315.80     |
| 9:45        | 296.20   | 301.00     | 21:45       | 268.80   | 315.80     |
| 10:00       | 292.60   | 301.00     | 22:00       | 266.40   | 315.80     |
| 10:15       | 294.70   | 301.00     | 22:15       | 289.50   | 301.00     |
| 10:30       | 294.00   | 301.00     | 22:30       | 290.90   | 301.00     |
| 10:45       | 291.90   | 301.00     | 22:45       | 286.40   | 301.00     |
| 11:00       | 291.90   | 301.00     | 23:00       | 284.60   | 301.00     |
| 11:15       | 291.00   | 301.00     | 23:15       | 275.50   | 301.00     |
| 11:30       | 292.10   | 301.00     | 23:30       | 270.40   | 301.00     |
| 11:45       | 291.50   | 301.00     | 23:45       | 268.20   | 301.00     |

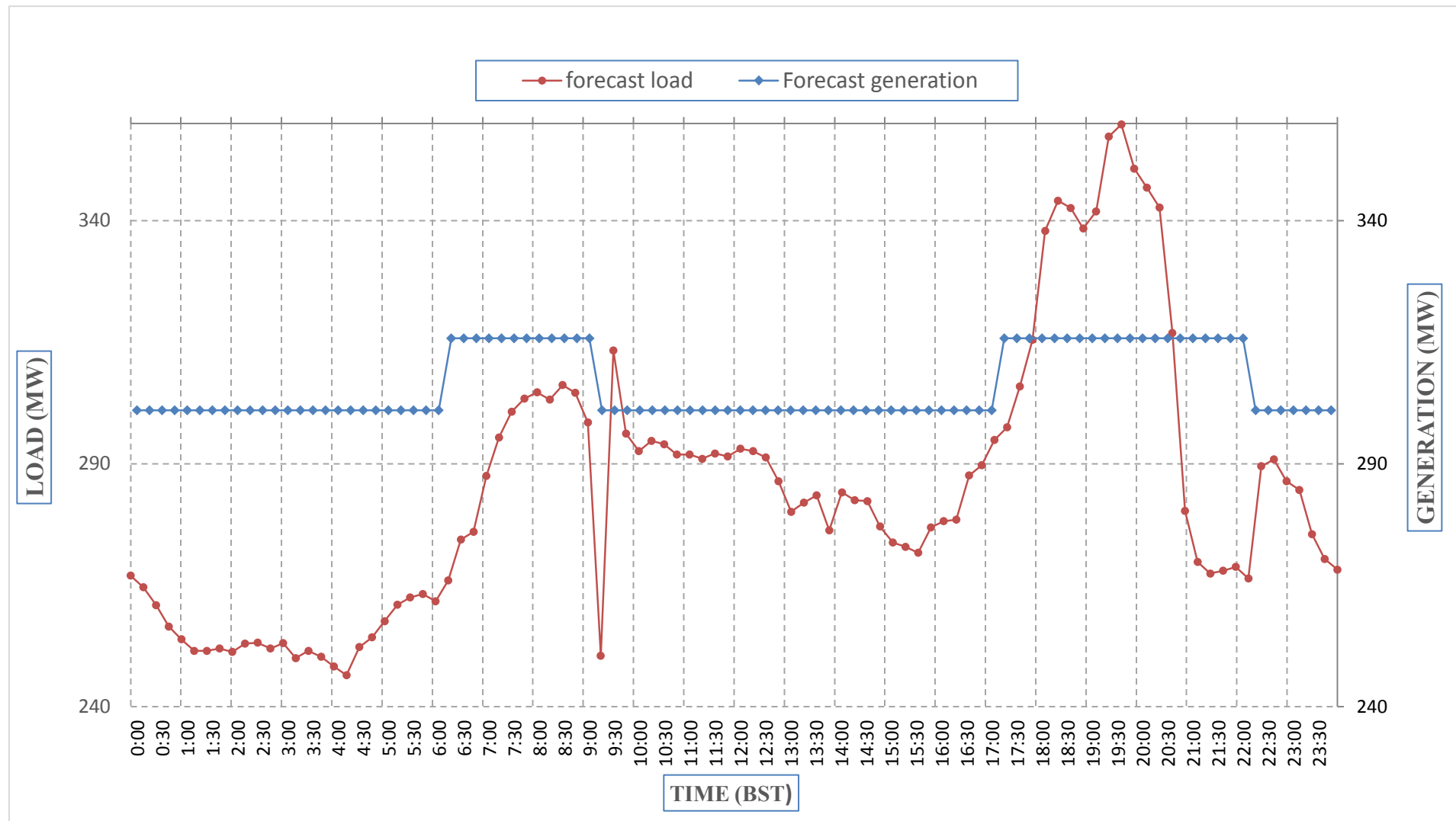
Yours faithfully,  
 Karma Choden



Message No.: Enter your message number  
 From: Shift In-charge, Control Room

Date: 8-Jan-18  
 Time: 10:28

Scheduled Generation & Load Forecast for Tomorrow (09-Jan-2018).



Yours faithfully,  
 Karma Choden

|                                         | MW     |
|-----------------------------------------|--------|
| Scheduled Peak Generation(09-Jan-2018). | 315.80 |
| Forecast Peak Load(09-Jan-2018).        | 359.80 |



འབྲུག་ལྷན་དྲུག་གི་འཕུལ་བཟོ་ལས་ཁུངས།  
**Bhutan Power Corporation Ltd.**  
**Bhutan Power System Operator**  
**Thimphu: Bhutan**



**Message No.:** Enter your message number **Date:** 8-Jan-18  
**From:** Shift In-charge, Control Room **Time:** 10:28

**To**  
 Managing Director, BPC. Email: gemtshering@bpc.bt  
 Director, O&MD, DGPC. Email: director.umd@drukgreen.com  
 General Manager, TD, BPC. Email: ktobgye@bpc.bt  
 Advisor, BPC. Email: bharattamang@bpc.bt

**Sub:** Scheduled Generation and Actual Generation of Dagachhu (07-Jan-2018).

| Hours (BST) | Forecast Generation | Actual Generation | Hours (BST) | Forecast Generation | Actual Generation |
|-------------|---------------------|-------------------|-------------|---------------------|-------------------|
| 0:00        | 23.80               | 23.01             | 12:00       | 23.80               | 23.83             |
| 0:15        | 23.80               | 23.02             | 12:15       | 23.80               | 23.50             |
| 0:30        | 23.80               | 23.00             | 12:30       | 23.80               | 23.50             |
| 0:45        | 23.80               | 23.02             | 12:45       | 23.80               | 23.52             |
| 1:00        | 23.80               | 23.03             | 13:00       | 23.80               | 23.50             |
| 1:15        | 23.80               | 23.04             | 13:15       | 23.80               | 23.51             |
| 1:30        | 23.80               | 23.52             | 13:30       | 23.80               | 23.51             |
| 1:45        | 23.80               | 23.52             | 13:45       | 23.80               | 23.49             |
| 2:00        | 23.80               | 23.51             | 14:00       | 23.80               | 23.33             |
| 2:15        | 23.80               | 24.11             | 14:15       | 23.80               | 23.32             |
| 2:30        | 23.80               | 24.13             | 14:30       | 23.80               | 23.32             |
| 2:45        | 23.80               | 24.11             | 14:45       | 23.80               | 23.32             |
| 3:00        | 23.80               | 24.11             | 15:00       | 23.80               | 23.32             |
| 3:15        | 23.80               | 24.10             | 15:15       | 23.80               | 23.06             |
| 3:30        | 23.80               | 24.12             | 15:30       | 23.80               | 23.05             |
| 3:45        | 23.80               | 24.10             | 15:45       | 23.80               | 23.06             |
| 4:00        | 23.80               | 24.11             | 16:00       | 23.80               | 23.05             |
| 4:15        | 23.80               | 23.83             | 16:15       | 23.80               | 23.04             |
| 4:30        | 23.80               | 23.83             | 16:30       | 23.80               | 23.04             |
| 4:45        | 23.80               | 23.81             | 16:45       | 23.80               | 23.03             |
| 5:00        | 23.80               | 23.82             | 17:00       | 23.80               | 23.04             |
| 5:15        | 23.80               | 23.55             | 17:15       | 23.80               | 23.05             |
| 5:30        | 23.80               | 23.52             | 17:30       | 23.80               | 23.06             |
| 6:45        | 23.80               | 23.54             | 17:45       | 23.80               | 23.05             |
| 6:00        | 23.80               | 23.51             | 18:00       | 23.80               | 23.05             |
| 6:15        | 23.80               | 23.52             | 18:15       | 23.80               | 23.04             |
| 6:30        | 23.80               | 23.53             | 18:30       | 23.80               | 22.81             |
| 6:45        | 23.80               | 24.03             | 18:45       | 23.80               | 22.81             |
| 7:00        | 23.80               | 24.00             | 19:00       | 23.80               | 22.81             |
| 7:15        | 23.80               | 24.01             | 19:15       | 23.80               | 22.83             |
| 7:30        | 23.80               | 24.01             | 19:30       | 23.80               | 22.55             |
| 7:45        | 23.80               | 24.02             | 19:45       | 23.80               | 22.54             |
| 8:00        | 23.80               | 24.01             | 20:00       | 23.80               | 22.56             |
| 8:15        | 23.80               | 24.02             | 20:15       | 23.80               | 22.56             |
| 8:30        | 23.80               | 24.01             | 20:30       | 23.80               | 22.55             |
| 8:45        | 23.80               | 24.03             | 20:45       | 23.80               | 22.54             |
| 9:00        | 23.80               | 24.03             | 21:00       | 23.80               | 22.54             |
| 9:15        | 23.80               | 24.01             | 21:15       | 23.80               | 22.54             |
| 9:30        | 23.80               | 24.03             | 21:30       | 23.80               | 22.54             |
| 9:45        | 23.80               | 24.02             | 21:45       | 23.80               | 22.01             |
| 10:00       | 23.80               | 24.02             | 22:00       | 23.80               | 22.34             |
| 10:15       | 23.80               | 24.01             | 22:15       | 23.80               | 21.99             |
| 10:30       | 23.80               | 23.82             | 22:30       | 23.80               | 18.03             |
| 10:45       | 23.80               | 23.82             | 22:45       | 23.80               | 22.31             |
| 11:00       | 23.80               | 23.83             | 23:00       | 23.80               | 22.32             |
| 11:15       | 23.80               | 23.82             | 23:15       | 23.80               | 22.32             |
| 11:30       | 23.80               | 23.82             | 23:30       | 23.80               | 22.31             |
| 11:45       | 23.80               | 23.83             | 23:45       | 23.80               | 22.29             |

Yours faithfully,  
 Karma Choden



འབྲུག་གྲོག་མེ་ལས་འཛིན།

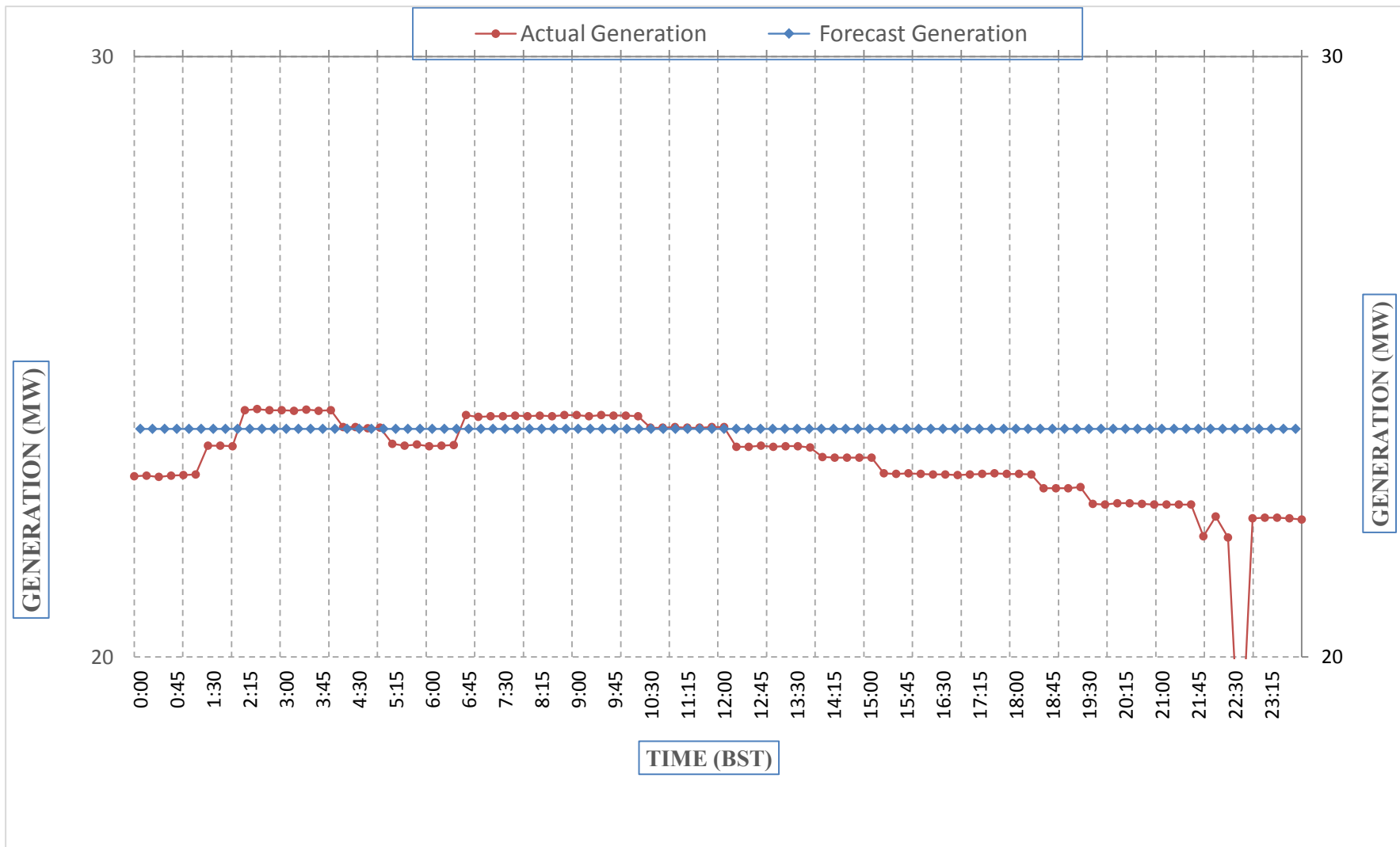
Bhutan Power Corporation Ltd.  
Bhutan Power System Operator  
Thimphu: Bhutan



Message No.: Enter your message number  
From: Shift In-charge, Control Room

Date: 8-Jan-18  
Time: 10:28

Scheduled Generation & Actual Generation of Dagachhu(07-Jan-2018).



Yours faithfully,  
Karma Choden