



འབྲུག་གླིང་མེ་ལམ་འཛིན།

Bhutan Power Corporation Ltd.
Bhutan Power System Operator
Thimphu: Bhutan



Message No.: Enter your message number
From: Shift In-charge, Control Room

Date: 7-Jan-18
Time: 10:28

To
Managing Director, BPC. Email: gemtshering@bpc.bt
Director, O&MD, DGPC. Email: director.omb@drukgreen.com
General Manager, TD, BPC. Email: ktobgye@bpc.bt
General Manager, DCSD, BPC. Email: sandeeprai@bpc.bt

Sub: **Load Generation Balance Report of Yesterday (06-Jan-2018).**

Hours (BST)	Forecast		Actual		Hours (BST)	Forecast		Actual	
	Load	Generation	Load	Generation		Load	Generation	Load	Generation
0:00	214.60	329.50	268.65	351.80	12:00	293.00	325.50	287.11	344.68
0:15	211.00	329.50	264.97	350.09	12:15	289.70	325.50	288.85	343.09
0:30	212.70	329.50	259.94	350.14	12:30	290.00	325.50	286.21	344.90
0:45	223.20	329.50	259.30	351.98	12:45	287.10	325.50	269.85	345.64
1:00	234.50	329.50	253.43	350.40	13:00	283.50	325.50	279.35	343.98
1:15	256.30	329.50	255.55	350.59	13:15	281.70	325.50	279.28	344.80
1:30	259.10	329.50	253.03	354.29	13:30	279.00	325.50	271.66	340.45
1:45	259.20	329.50	254.40	351.30	13:45	264.40	325.50	280.08	340.03
2:00	260.30	329.50	258.51	352.83	14:00	280.40	325.50	275.19	339.23
2:15	260.60	329.50	259.52	350.61	14:15	282.40	325.50	256.99	339.59
2:30	260.30	329.50	258.98	352.88	14:30	282.80	325.50	257.94	339.22
2:45	257.90	329.50	258.02	352.11	14:45	269.60	325.50	261.27	341.34
3:00	259.70	329.50	255.16	352.16	15:00	267.00	325.50	258.30	343.70
3:15	255.60	329.50	253.76	350.34	15:15	267.90	325.50	262.16	342.82
3:30	256.20	329.50	260.80	351.54	15:30	271.00	325.50	265.16	340.73
3:45	256.90	329.50	256.48	352.08	15:45	269.90	325.50	270.11	341.48
4:00	258.10	329.50	254.55	349.86	16:00	273.60	325.50	276.21	342.33
4:15	257.20	329.50	243.27	349.92	16:15	271.60	325.50	275.53	323.88
4:30	258.90	329.50	249.82	339.77	16:30	276.40	325.50	289.18	323.02
4:45	258.90	329.50	257.26	342.95	16:45	282.30	325.50	290.21	320.02
5:00	264.30	329.50	262.38	343.20	17:00	285.20	325.50	290.86	322.28
5:15	265.50	329.50	263.95	354.63	17:15	279.60	325.50	295.88	321.95
5:30	267.00	329.50	267.59	356.48	17:30	285.80	325.50	293.88	332.43
5:45	266.70	329.50	268.00	354.79	17:45	294.80	325.50	317.84	332.02
6:00	269.20	329.50	259.10	359.39	18:00	334.50	329.50	331.35	332.54
6:15	273.50	329.50	260.84	355.89	18:15	339.00	329.50	340.46	335.18
6:30	280.10	329.50	274.40	356.16	18:30	339.80	329.50	338.53	333.25
6:45	273.50	329.50	280.32	356.88	18:45	323.10	329.50	341.71	334.59
7:00	294.20	325.50	284.80	356.64	19:00	336.40	329.50	325.45	334.19
7:15	302.10	325.50	289.03	356.41	19:15	334.50	329.50	326.46	332.95
7:30	305.60	325.50	296.36	356.39	19:30	318.40	329.50	339.92	334.58
7:45	307.70	325.50	297.18	354.26	19:45	321.40	329.50	328.91	334.80
8:00	308.00	325.50	302.59	355.69	20:00	336.80	329.50	325.15	334.77
8:15	307.40	325.50	309.46	355.67	20:15	337.60	329.50	325.74	332.36
8:30	307.90	325.50	310.11	355.22	20:30	334.80	329.50	317.24	333.84
8:45	304.10	325.50	310.13	355.31	20:45	320.00	329.50	306.92	332.05
9:00	301.30	325.50	301.07	354.28	21:00	344.20	329.50	303.48	334.15
9:15	288.60	325.50	289.40	340.88	21:15	354.30	329.50	298.11	333.42
9:30	308.80	325.50	273.64	341.01	21:30	347.50	329.50	288.82	320.42
9:45	305.60	325.50	279.55	342.82	21:45	332.90	329.50	290.83	319.74
10:00	299.40	325.50	281.87	339.79	22:00	323.10	329.50	285.45	319.05
10:15	298.40	325.50	280.79	341.03	22:15	308.80	329.50	269.54	320.03
10:30	298.00	325.50	279.82	340.49	22:30	270.00	329.50	279.15	320.75
10:45	298.00	325.50	269.32	342.42	22:45	250.70	329.50	266.34	319.52
11:00	295.60	325.50	274.79	342.62	23:00	243.30	329.50	273.78	320.19
11:15	293.20	325.50	283.65	343.87	23:15	224.10	329.50	266.86	320.06
11:30	295.20	325.50	279.41	330.98	23:30	218.00	329.50	248.34	319.80
11:45	291.10	325.50	284.51	335.91	23:45	215.90	329.50	263.98	320.66

Yours faithfully
Jangchuk Selden

Coincidental peak load of Day(Last year):	
269.27MW	6-Jan-17
Maximum Load till date:	
362.09 MW	14-Nov-17



འབྲུག་རྒྱལ་ཁོ་ལས་འཛིན།

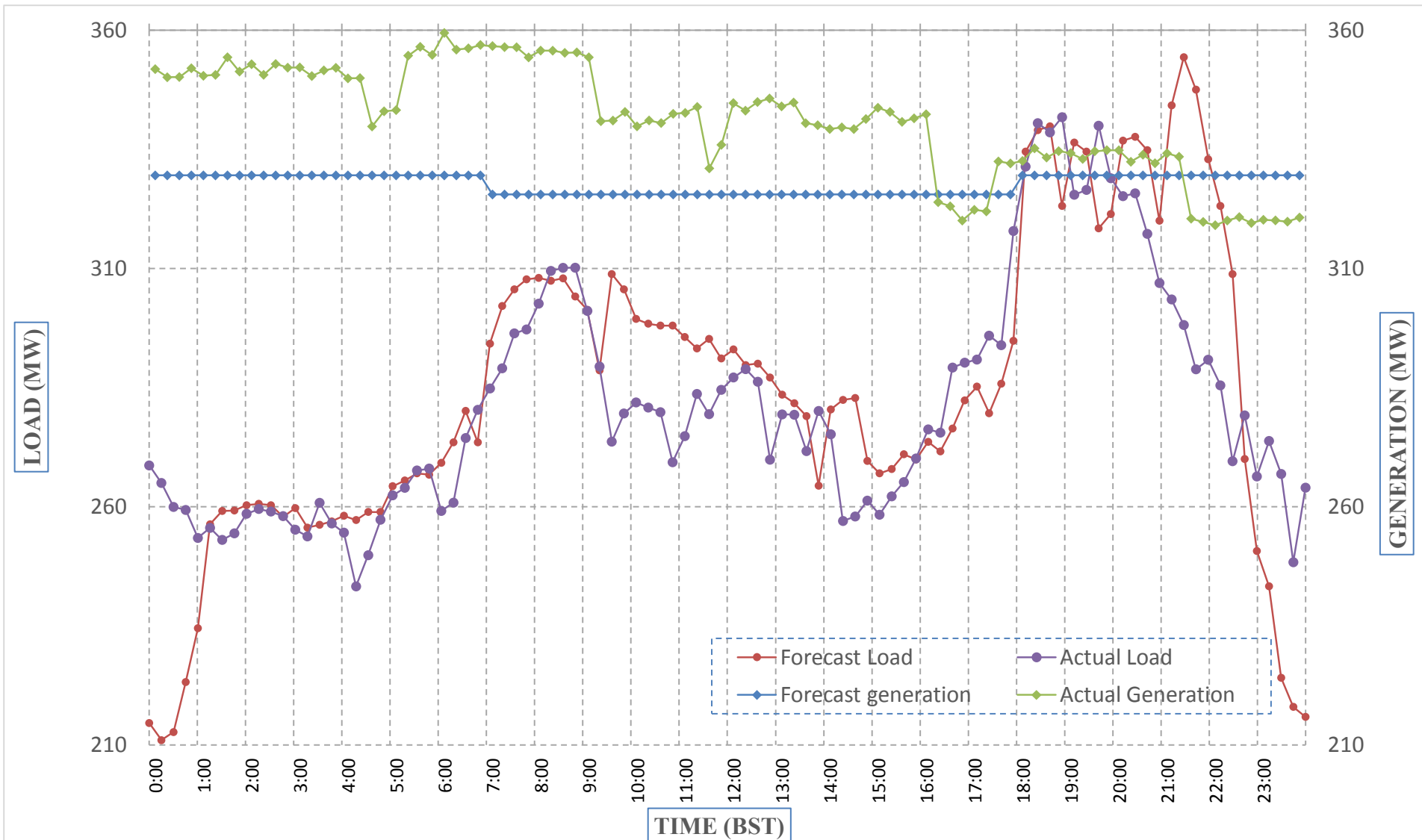
Bhutan Power Corporation Ltd.
 Bhutan Power System Operator
 Thimphu: Bhutan



Message No.: Enter your message number
 From: Shift In-charge, Control Room

Date: 7-Jan-18
 Time: 10:28

Forecast Generation & Load with Actual Generation & Load (06-Jan-2018).



Yours faithfully,
 Jangchuk Selden

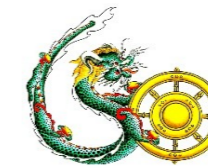
	MW	Coincidental peak load of Day(Last year):	
Peak Co-incident Generation(06-Jan-2018).	359.39	269.27MW	6-Jan-17
Peak Co-incident Load(06-Jan-2018).	341.71		
		Maximum Load till date:	
		362.09 MW	14-Nov-17

Telephone: +975-02335631; Fax: +975-02335632; Email: bhutansystemoperator@bpc.bt; www.bpc.bt



འབྲུག་གློག་ལེ་ལས་འཛིན།

Bhutan Power Corporation Ltd.
Bhutan Power System Operator
Thimphu: Bhutan



Message No.: Enter your message number
From: Shift In-charge, Control Room

Date: 7-Jan-18
Time: 10:28

To
Managing Director, BPC. Email: gemtshering@bpc.bt
Director, O&MD, DGPC. Email: director.umd@drukgreen.com
General Manager, TD, BPC. Email: thinleygyeltshen@bpc.bt
General Manager, DCSD, BPC. Email: sandeeprai@bpc.bt

Sub: Load Generation Balance Report of Today (07-Jan-2018).

Hours (BST)	Forecast		Actual	
	Load	Generation	Load	Generation
0:00	341.20	219.40	251.94	320.35
0:15	341.20	222.30	263.13	320.41
0:30	341.20	226.80	251.79	315.84
0:45	343.10	235.60	250.14	317.88
1:00	343.10	248.20	244.66	316.20
1:15	343.10	255.50	239.47	319.65
1:30	343.10	257.60	241.79	320.77
1:45	343.10	255.70	240.09	321.13
2:00	343.10	256.00	242.95	321.55
2:15	341.40	258.00	245.65	321.47
2:30	341.40	257.30	244.26	320.50
2:45	341.40	256.00	247.47	320.62
3:00	341.40	256.30	254.00	321.66
3:15	341.40	253.30	247.95	321.78
3:30	341.40	254.10	244.43	320.45
3:45	341.40	255.40	243.21	322.64
4:00	341.40	255.60	234.57	322.44
4:15	341.40	256.50	236.31	320.63
4:30	341.40	258.60	247.99	319.63
4:45	341.40	257.80	245.74	321.78
5:00	341.40	262.70	237.45	334.20
5:15	341.40	264.90	250.64	334.97
5:30	341.40	265.60	257.11	334.06
5:45	341.40	265.50	255.01	334.05
6:00	341.40	268.50	256.58	336.35
6:15	341.40	272.00	258.95	334.64
6:30	341.40	278.40	260.88	334.20
6:45	341.40	274.30	273.16	333.83
7:00	341.40	292.20	274.56	333.68
7:15	341.40	301.20	281.62	335.52
7:30	341.40	304.80	287.67	334.61
7:45	341.40	305.30	292.47	334.51
8:00	341.40	304.90	296.11	332.62
8:15	341.40	305.10	300.88	333.81
8:30	341.40	305.50	299.46	334.20
8:45	341.40	301.70	301.15	333.28
9:00	341.40	300.30	284.78	336.37

Yours faithfully,
Jangchuk Selden

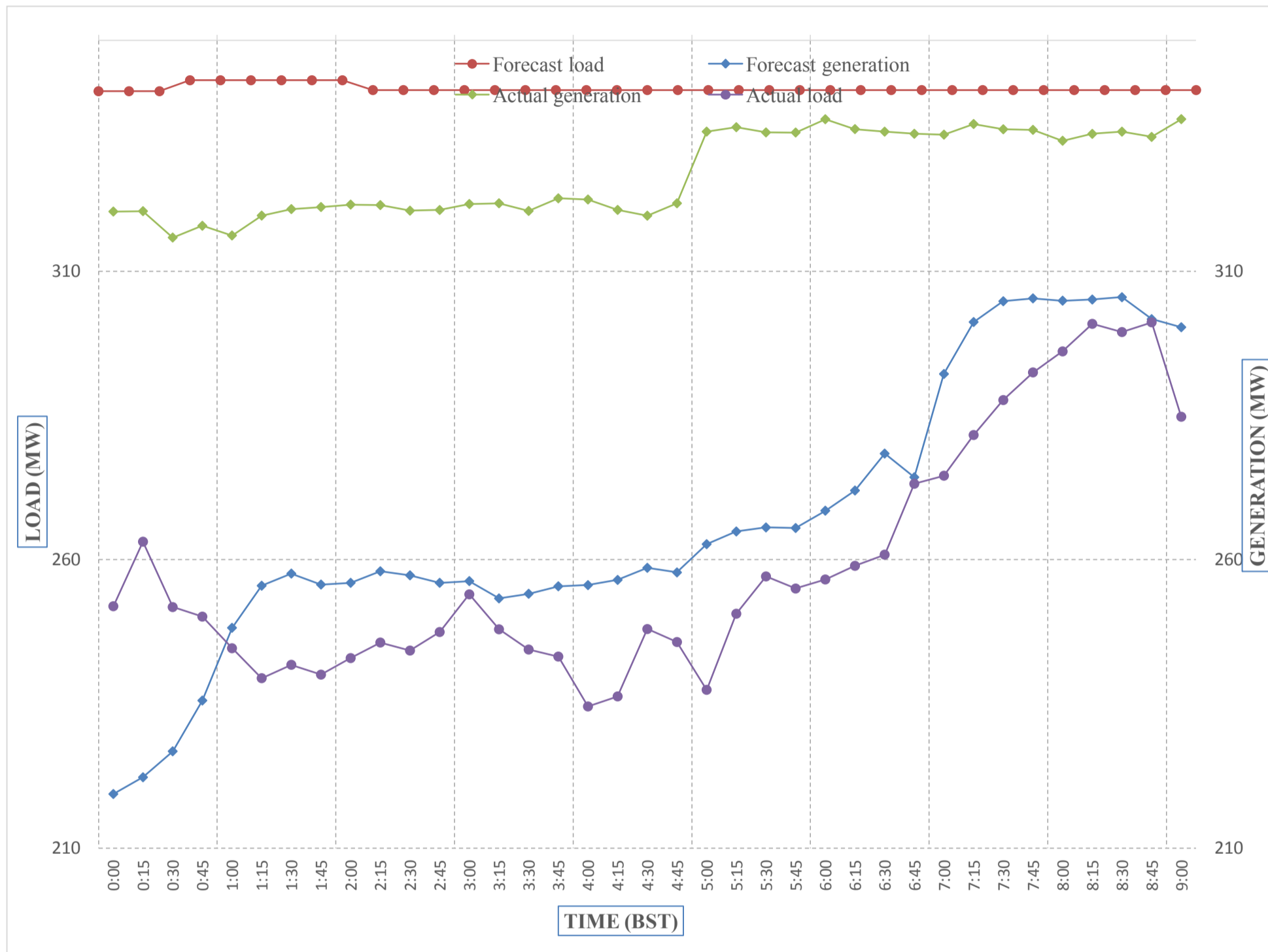
Coincidental peak load of Day(Last year):	
269.27MW	6-Jan-17
Maximum Load till date:	
362.09 MW	14-Nov-17



Message No.: Enter your message number
 From: Shift In-charge, Control Room

Date: 7-Jan-18
 Time: 10:28

Forecast Generation & Load with Actual Generation & Load of Today from 00:00hrs to 09:00hrs(07-Jan-2018).



Yours faithfully
 Jangchuk Selden

Coincidental peak load of	
269.27MW	6-Jan-17

Maximum Load till date:	
362.09 MW	14-Nov-17



འབྲུག་གི་འོ་ལྷན་ཁུངས་ལ.ལོ.
Bhutan Power Corporation Ltd.
Bhutan Power System Operator
 Thimphu: Bhutan



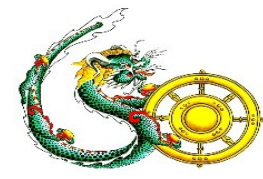
Message No.: Enter your message number **Date:** 7-Jan-18
From: Shift In-charge, Control Room **Time:** 10:28

To
 Managing Director, BPC. Email: gemtshering@bpc.bt
 Director, O&MD, DGPC. Email: director.umd@drukgreen.com
 General Manager, TD, BPC. Email: ktobgye@bpc.bt
 Advisor, BPC. Email: bharattamang@bpc.bt

Sub: **Load Generation Balance Report of Tomorrow (08-Jan-2018).**

Hours (BST)	Forecast		Hours (BST)	Forecast	
	Load	Generation		Load	Generation
0:00	337.70	248.80	12:00	337.70	291.60
0:15	337.70	256.90	12:15	337.70	290.50
0:30	337.70	256.40	12:30	337.70	289.90
0:45	337.70	255.00	12:45	337.70	284.40
1:00	337.70	256.60	13:00	337.70	284.00
1:15	337.70	255.80	13:15	337.70	283.10
1:30	337.70	253.50	13:30	337.70	281.20
1:45	337.70	255.60	13:45	337.70	271.40
2:00	337.70	255.60	14:00	337.70	281.60
2:15	337.70	256.50	14:15	337.70	279.10
2:30	337.70	255.90	14:30	337.70	278.80
2:45	337.70	254.40	14:45	337.70	272.30
3:00	337.70	254.70	15:00	337.70	268.70
3:15	337.70	250.60	15:15	337.70	270.10
3:30	337.70	252.90	15:30	337.70	269.30
3:45	337.70	253.80	15:45	337.70	273.90
4:00	337.70	253.30	16:00	337.70	277.80
4:15	337.70	250.50	16:15	337.70	277.20
4:30	337.70	254.60	16:30	337.70	286.50
4:45	337.70	256.30	16:45	337.70	288.90
5:00	337.70	261.40	17:00	351.90	292.70
5:15	337.70	264.20	17:15	343.10	293.60
5:30	337.70	265.10	17:30	343.10	300.60
6:45	351.90	266.10	17:45	343.10	310.20
6:00	351.90	264.40	18:00	343.10	335.70
6:15	351.90	269.90	18:15	343.10	342.70
6:30	351.90	278.20	18:30	343.10	342.30
6:45	351.90	277.90	18:45	343.10	336.10
7:00	351.90	291.90	19:00	343.10	337.20
7:15	351.90	301.10	19:15	343.10	343.40
7:30	351.90	304.70	19:30	343.10	345.80
7:45	351.90	307.60	19:45	343.10	348.40
8:00	351.90	306.80	20:00	343.10	350.00
8:15	351.90	307.70	20:15	343.10	347.90
8:30	351.90	308.50	20:30	343.10	335.50
8:45	351.90	306.60	20:45	343.10	320.70
9:00	337.70	302.90	21:00	343.10	324.60
9:15	337.70	253.60	21:15	343.10	318.20
9:30	337.70	306.40	21:30	343.10	283.70
9:45	337.70	298.70	21:45	343.10	270.60
10:00	337.70	297.40	22:00	343.10	257.50
10:15	337.70	297.30	22:15	343.10	252.30
10:30	337.70	295.70	22:30	343.10	254.10
10:45	337.70	291.50	22:45	338.30	258.70
11:00	337.70	292.70	23:00	338.30	273.20
11:15	337.70	291.80	23:15	338.30	270.60
11:30	337.70	291.60	23:30	338.30	271.00
11:45	337.70	291.60	23:45	338.30	270.80

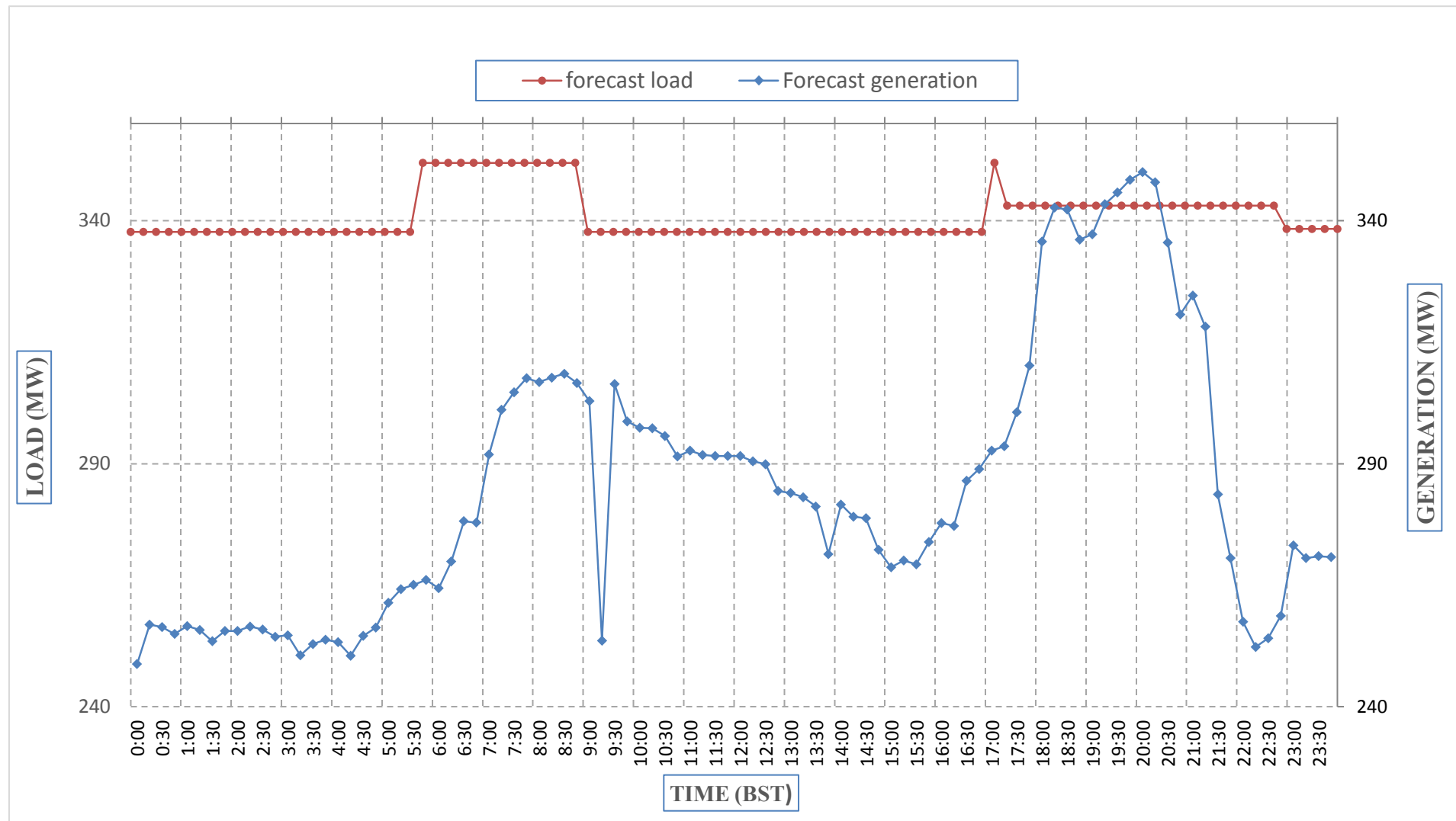
Yours faithfully,
 Jangchuk Selden



Message No.: Enter your message number
 From: Shift In-charge, Control Room

Date: 7-Jan-18
 Time: 10:28

Scheduled Generation & Load Forecast for Tomorrow (08-Jan-2018).



Yours faithfully,
 Jangchuk Selden

	MW
Scheduled Peak Generation(08-Jan-2018).	350.00
Forecast Peak Load(08-Jan-2018).	351.90



འབྲུག་ལྷན་དྲུག་ལུ་
Bhutan Power Corporation Ltd.
Bhutan Power System Operator
 Thimphu: Bhutan



Message No.: Enter your message number **Date:** 7-Jan-18
From: Shift In-charge, Control Room **Time:** 10:28

To
 Managing Director, BPC. Email: gemtshering@bpc.bt
 Director, O&MD, DGPC. Email: director.omd@drukgreen.com
 General Manager, TD, BPC. Email: ktobgye@bpc.bt
 Advisor, BPC. Email: bharattamang@bpc.bt

Sub: Scheduled Generation and Actual Generation of Dagachhu (06-Jan-2018).

Hours (BST)	Forecast Generation	Actual Generation	Hours (BST)	Forecast Generation	Actual Generation
0:00	23.80	23.50	12:00	23.80	23.70
0:15	23.80	23.51	12:15	23.80	23.51
0:30	23.80	23.50	12:30	23.80	23.52
0:45	23.80	23.51	12:45	23.80	23.52
1:00	23.80	23.50	13:00	23.80	23.50
1:15	23.80	23.50	13:15	23.80	23.50
1:30	23.80	23.49	13:30	23.80	23.51
1:45	23.80	23.50	13:45	23.80	23.06
2:00	23.80	23.49	14:00	23.80	23.05
2:15	23.80	23.50	14:15	23.80	23.04
2:30	23.80	23.52	14:30	23.80	23.04
2:45	23.80	23.51	14:45	23.80	23.02
3:00	23.80	23.50	15:00	23.80	23.84
3:15	23.80	23.51	15:15	23.80	23.82
3:30	23.80	23.49	15:30	23.80	23.84
3:45	23.80	23.53	15:45	23.80	23.83
4:00	23.80	23.54	16:00	23.80	23.82
4:15	23.80	23.50	16:15	23.80	23.84
4:30	23.80	23.51	16:30	23.80	23.84
4:45	23.80	23.52	16:45	23.80	23.52
5:00	23.80	23.51	17:00	23.80	23.52
5:15	23.80	23.52	17:15	23.80	23.50
5:30	23.80	23.51	17:30	23.80	23.04
6:45	23.80	23.51	17:45	23.80	23.04
6:00	23.80	25.05	18:00	23.80	23.04
6:15	23.80	24.02	18:15	23.80	23.34
6:30	23.80	24.32	18:30	23.80	23.35
6:45	23.80	24.33	18:45	23.80	23.35
7:00	23.80	24.86	19:00	23.80	23.34
7:15	23.80	24.87	19:15	23.80	23.36
7:30	23.80	24.50	19:30	23.80	23.32
7:45	23.80	23.98	19:45	23.80	23.32
8:00	23.80	24.01	20:00	23.80	23.32
8:15	23.80	23.84	20:15	23.80	23.02
8:30	23.80	23.83	20:30	23.80	23.02
8:45	23.80	23.51	20:45	23.80	23.02
9:00	23.80	23.50	21:00	23.80	23.00
9:15	23.80	23.49	21:15	23.80	23.03
9:30	23.80	23.51	21:30	23.80	23.01
9:45	23.80	23.70	21:45	23.80	23.02
10:00	23.80	23.70	22:00	23.80	23.02
10:15	23.80	23.71	22:15	23.80	23.01
10:30	23.80	23.69	22:30	23.80	23.02
10:45	23.80	23.72	22:45	23.80	23.02
11:00	23.80	23.73	23:00	23.80	23.02
11:15	23.80	23.70	23:15	23.80	23.02
11:30	23.80	23.73	23:30	23.80	23.02
11:45	23.80	23.72	23:45	23.80	23.03

Yours faithfully,
 Jangchuk Selden



འབྲུག་རྒྱལ་ཁོ་ལས་འཛིན།

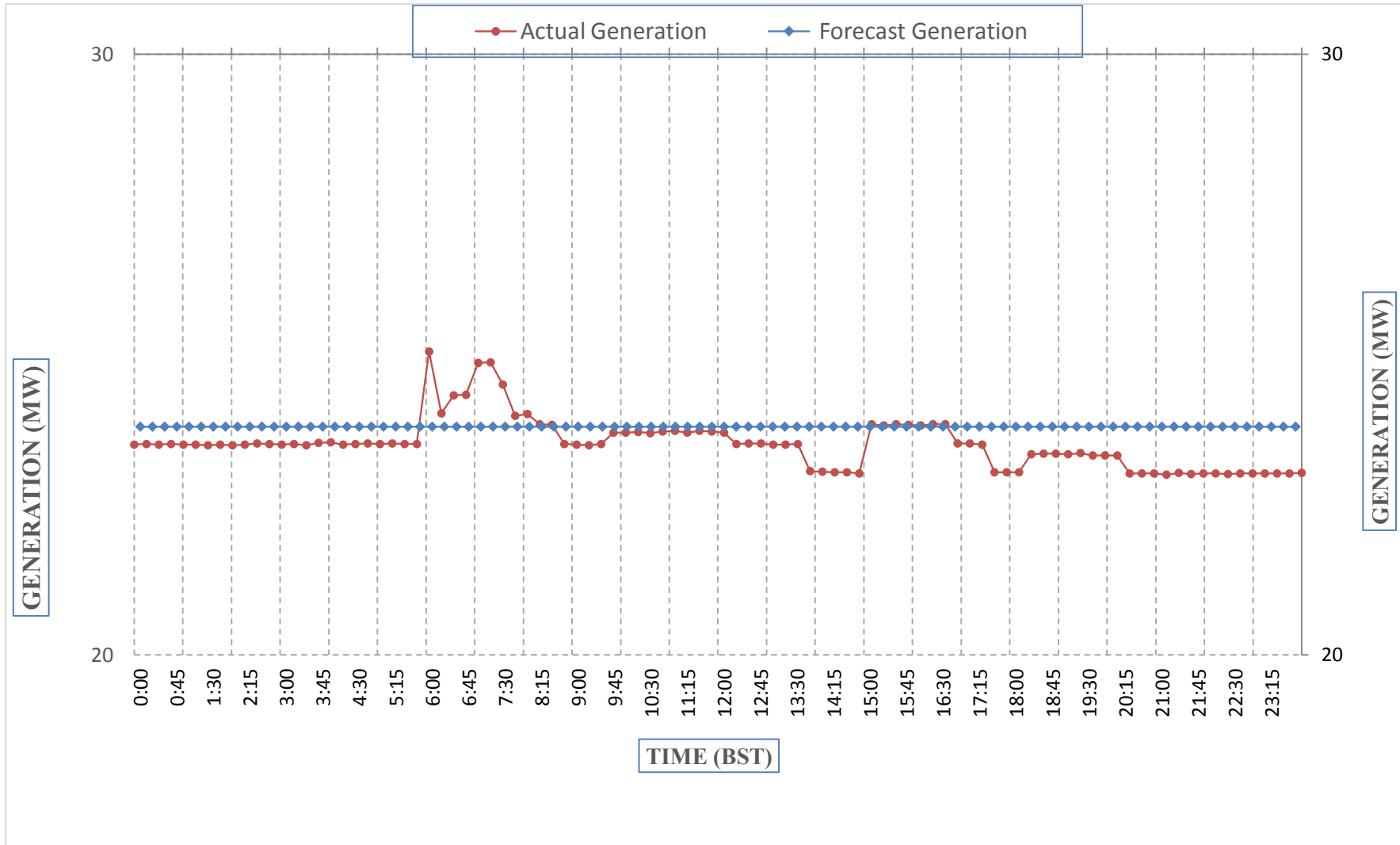
Bhutan Power Corporation Ltd.
Bhutan Power System Operator
Thimphu: Bhutan



Message No.: Enter your message number
From: Shift In-charge, Control Room

Date: 7-Jan-18
Time: 10:28

Scheduled Generation & Actual Generation of Dagachhu(06-Jan-2018).



Yours faithfully,
Jangchuk Selden