



འབྲུག་གླིང་གི་ལམ་འཛིན།

Bhutan Power Corporation Ltd.
Bhutan Power System Operator
Thimphu: Bhutan



Message No.: Enter your message number
From: Shift In-charge, Control Room

Date: 6-Jan-18
Time: 11:40

To
Managing Director, BPC. Email: gemtshering@bpc.bt
Director, O&MD, DGPC. Email: director.omb@drukgreen.com
General Manager, TD, BPC. Email: ktobgye@bpc.bt
General Manager, DCSD, BPC. Email: sandeeprai@bpc.bt

Sub: **Load Generation Balance Report of Yesterday (05-Jan-2018).**

Hours (BST)	Forecast		Actual		Hours (BST)	Forecast		Actual	
	Load	Generation	Load	Generation		Load	Generation	Load	Generation
0:00	260.00	326.30	267.13	333.59	12:00	293.60	326.30	289.88	344.87
0:15	242.30	326.30	257.67	331.34	12:15	290.40	326.30	291.96	331.53
0:30	227.30	326.30	254.18	331.94	12:30	292.60	326.30	290.61	332.24
0:45	211.60	326.30	245.57	332.09	12:45	288.90	326.30	297.40	333.94
1:00	202.60	326.30	242.99	333.17	13:00	283.70	326.30	294.00	331.43
1:15	217.10	326.30	240.95	333.05	13:15	280.90	326.30	293.66	333.54
1:30	220.20	326.30	246.50	331.30	13:30	278.30	326.30	291.77	332.84
1:45	236.00	326.30	248.60	332.80	13:45	266.40	326.30	292.38	333.16
2:00	243.50	326.30	251.10	332.97	14:00	282.60	326.30	290.45	331.84
2:15	251.40	326.30	250.38	331.98	14:15	282.20	326.30	288.15	332.86
2:30	253.30	326.30	247.40	333.40	14:30	284.30	326.30	287.64	332.87
2:45	254.20	326.30	249.43	332.64	14:45	266.50	326.30	289.48	332.08
3:00	257.60	326.30	248.57	332.63	15:00	263.50	326.30	280.63	332.59
3:15	253.50	326.30	243.86	332.30	15:15	265.30	326.30	281.57	333.42
3:30	255.20	326.30	247.23	333.35	15:30	268.70	326.30	281.82	333.08
3:45	253.00	326.30	245.53	331.56	15:45	266.80	326.30	285.60	333.34
4:00	255.70	326.30	246.44	332.90	16:00	269.90	326.30	293.61	332.98
4:15	254.80	326.30	249.38	332.97	16:15	267.70	326.30	286.13	332.48
4:30	256.30	326.30	254.32	332.59	16:30	271.70	326.30	299.05	333.13
4:45	256.60	326.30	254.51	332.79	16:45	275.10	326.30	303.04	331.61
5:00	261.20	326.30	257.23	332.14	17:00	278.10	340.30	307.05	332.26
5:15	264.90	326.30	261.52	332.65	17:15	271.10	340.30	315.45	352.73
5:30	267.30	326.30	263.90	333.64	17:30	277.00	340.30	322.76	353.01
5:45	267.50	326.30	266.55	331.48	17:45	286.60	340.30	323.66	334.24
6:00	269.00	326.30	264.99	331.45	18:00	334.00	340.30	318.28	365.55
6:15	272.50	340.30	270.92	332.54	18:15	338.60	340.30	339.19	367.09
6:30	279.10	340.30	273.21	331.88	18:30	339.60	340.30	336.55	365.50
6:45	270.50	340.30	285.68	334.52	18:45	320.90	340.30	332.10	366.46
7:00	293.90	340.30	288.69	333.10	19:00	336.00	340.30	331.43	366.56
7:15	301.00	340.30	301.20	333.04	19:15	334.30	340.30	340.78	364.39
7:30	303.40	340.30	309.38	332.47	19:30	314.70	340.30	337.58	364.29
7:45	307.90	340.30	304.77	331.86	19:45	320.40	340.30	331.02	365.77
8:00	308.90	340.30	306.22	331.84	20:00	340.10	340.30	324.48	366.61
8:15	308.50	340.30	305.69	332.09	20:15	340.80	326.30	331.10	366.00
8:30	308.80	340.30	300.88	333.34	20:30	337.90	326.30	323.29	366.58
8:45	305.70	340.30	301.14	332.03	20:45	318.70	326.30	317.69	366.85
9:00	262.10	340.30	305.89	332.88	21:00	346.40	326.30	312.84	364.13
9:15	327.50	326.30	309.80	331.89	21:15	353.00	326.30	309.71	365.95
9:30	311.40	326.30	308.85	343.98	21:30	341.60	326.30	299.47	365.25
9:45	304.30	326.30	301.59	345.30	21:45	335.20	326.30	299.20	366.49
10:00	297.30	326.30	306.00	346.95	22:00	331.20	326.30	297.27	350.02
10:15	297.40	326.30	305.31	344.36	22:15	314.10	326.30	287.74	352.31
10:30	297.50	326.30	306.16	345.55	22:30	298.90	326.30	277.59	352.09
10:45	298.00	326.30	292.93	346.29	22:45	290.00	326.30	282.93	352.09
11:00	296.20	326.30	293.85	346.01	23:00	274.50	326.30	279.78	352.25
11:15	294.20	326.30	294.63	344.75	23:15	242.90	326.30	276.86	352.16
11:30	295.80	326.30	297.93	346.37	23:30	224.80	326.30	273.54	352.38
11:45	293.10	326.30	300.82	347.22	23:45	219.10	326.30	272.70	352.28

Yours faithfully
Tshering Yangzom

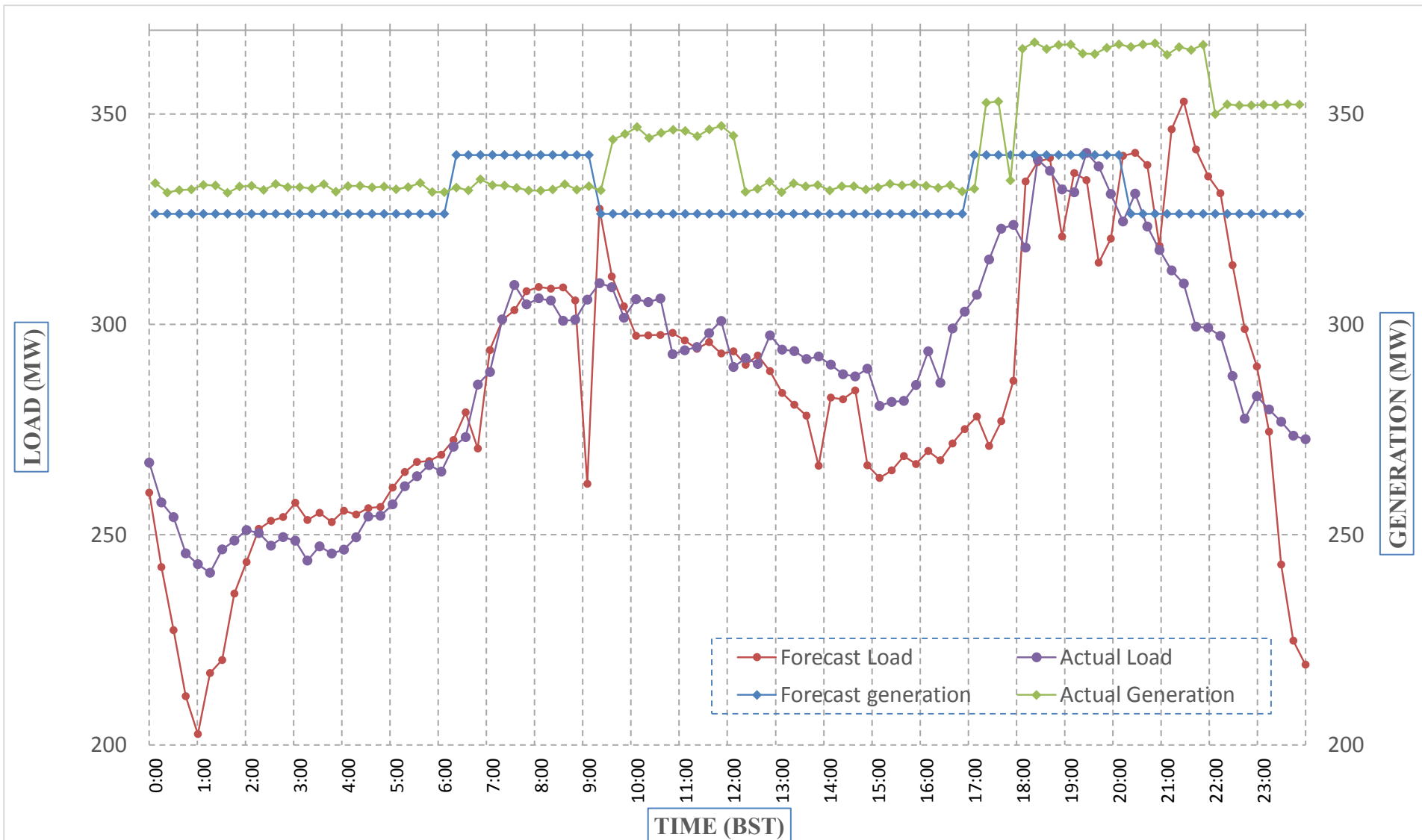
Coincidental peak load of Day(Last year):	
249.57	5-Jan-17
Maximum Load till date:	
362.09 MW	14-Nov-17



Message No.: Enter your message number
From: Shift In-charge, Control Room

Date: 6-Jan-18
Time: 11:40

Forecast Generation & Load with Actual Generation & Load (05-Jan-2018).



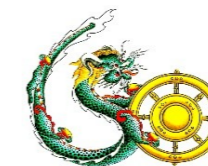
Yours faithfully,
 Tshering Yangzom

	MW	Coincidental peak load of Day(Last year):	
Peak Co-incident Generation(05-Jan-2018).	367.09	249.57	5-Jan-17
Peak Co-incident Load(05-Jan-2018).	340.78		
		Maximum Load till date:	
		362.09 MW	14-Nov-17



འབྲུག་གྲོག་མེ་ལས་འཛིན།

Bhutan Power Corporation Ltd.
Bhutan Power System Operator
Thimphu: Bhutan



Message No.: Enter your message number
From: Shift In-charge, Control Room

Date: 6-Jan-18
Time: 11:40

To
Managing Director, BPC. Email: gemtshering@bpc.bt
Director, O&MD, DGPC. Email: director.omb@drukgreen.com
General Manager, TD, BPC. Email: thinleygyeltshen@bpc.bt
General Manager, DCSD, BPC. Email: sandeeprai@bpc.bt

Sub: Load Generation Balance Report of Today (06-Jan-2018).

Hours (BST)	Forecast		Actual	
	Load	Generation	Load	Generation
0:00	214.60	329.50	268.65	351.80
0:15	211.00	329.50	264.97	350.09
0:30	212.70	329.50	259.94	350.14
0:45	223.20	329.50	259.30	351.98
1:00	234.50	329.50	253.43	350.40
1:15	256.30	329.50	255.55	350.59
1:30	259.10	329.50	253.03	354.29
1:45	259.20	329.50	254.40	351.30
2:00	260.30	329.50	258.51	352.83
2:15	260.60	329.50	259.52	350.61
2:30	260.30	329.50	258.98	352.88
2:45	257.90	329.50	258.02	352.11
3:00	259.70	329.50	255.16	352.16
3:15	255.60	329.50	253.76	350.34
3:30	256.20	329.50	260.80	351.54
3:45	256.90	329.50	256.48	352.08
4:00	258.10	329.50	254.55	349.86
4:15	257.20	329.50	243.27	349.92
4:30	258.90	329.50	249.82	339.77
4:45	258.90	329.50	257.26	342.95
5:00	264.30	329.50	262.38	343.20
5:15	265.50	329.50	263.95	354.63
5:30	267.00	329.50	267.59	356.48
5:45	266.70	329.50	268.00	354.79
6:00	269.20	329.50	259.10	359.39
6:15	273.50	329.50	260.84	355.89
6:30	280.10	329.50	274.40	356.16
6:45	273.50	329.50	280.32	356.88
7:00	294.20	325.50	284.80	356.64
7:15	302.10	325.50	289.03	356.41
7:30	305.60	325.50	296.36	356.39
7:45	307.70	325.50	297.18	354.26
8:00	308.00	325.50	302.59	355.69
8:15	307.40	325.50	309.46	355.67
8:30	307.90	325.50	310.11	355.22
8:45	304.10	325.50	310.13	355.31
9:00	301.30	325.50	301.07	354.28

Coincidental peak load of Day(Last year):	
249.57	5-Jan-17
Maximum Load till date:	
362.09 MW	14-Nov-17

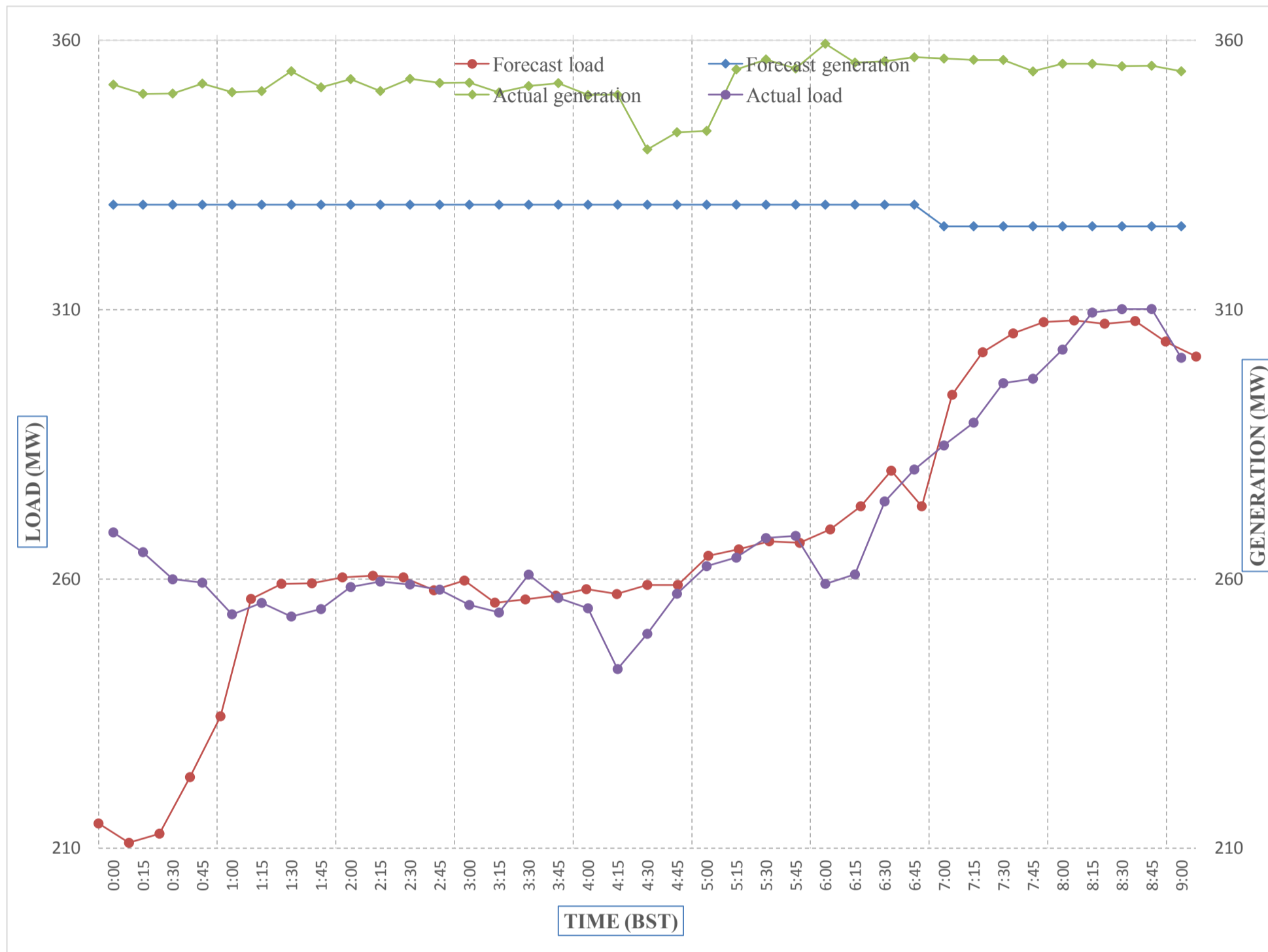
Yours faithfully,
Tshering Yangzom



Message No.: Enter your message number
 From: Shift In-charge, Control Room

Date: 6-Jan-18
 Time: 11:40

Forecast Generation & Load with Actual Generation & Load of Today from 00:00hrs to 09:00hrs(06-Jan-2018).



Yours faithfully
 Tshering Yangzom

Coincidental peak load of	
249.57	6-Jan-18

Maximum Load till date:	
362.09 MW	14-Nov-17



འབྲུག་གཞི་རིག་ལྷན་ཁག་ལ.འ.
Bhutan Power Corporation Ltd.
Bhutan Power System Operator
 Thimphu: Bhutan



Message No.: Enter your message number **Date:** 6-Jan-18
From: Shift In-charge, Control Room **Time:** 11:40

To
 Managing Director, BPC. Email: gemtshering@bpc.bt
 Director, O&MD, DGPC. Email: director.umd@drukgreen.com
 General Manager, TD, BPC. Email: ktobgye@bpc.bt
 Advisor, BPC. Email: bharattamang@bpc.bt

Sub: **Load Generation Balance Report of Tomorrow (07-Jan-2018).**

Hours (BST)	Forecast		Hours (BST)	Forecast	
	Load	Generation		Load	Generation
0:00	341.20	219.40	12:00	341.40	292.80
0:15	341.20	222.30	12:15	341.40	290.80
0:30	341.20	226.80	12:30	341.40	291.70
0:45	343.10	235.60	12:45	341.40	288.90
1:00	343.10	248.20	13:00	341.40	287.40
1:15	343.10	255.50	13:15	341.40	286.10
1:30	343.10	257.60	13:30	341.40	283.10
1:45	343.10	255.70	13:45	341.40	271.10
2:00	343.10	256.00	14:00	341.40	283.70
2:15	341.40	258.00	14:15	341.40	285.00
2:30	341.40	257.30	14:30	341.40	285.60
2:45	341.40	256.00	14:45	341.40	274.50
3:00	341.40	256.30	15:00	341.40	270.30
3:15	341.40	253.30	15:15	341.40	271.30
3:30	341.40	254.10	15:30	341.40	274.20
3:45	341.40	255.40	15:45	341.40	274.20
4:00	341.40	255.60	16:00	341.40	278.90
4:15	341.40	256.50	16:15	341.40	275.40
4:30	341.40	258.60	16:30	341.40	282.10
4:45	341.40	257.80	16:45	341.40	286.60
5:00	341.40	262.70	17:00	341.40	289.80
5:15	341.40	264.90	17:15	341.40	286.00
5:30	341.40	265.60	17:30	341.40	293.30
6:45	341.40	265.50	17:45	341.40	298.90
6:00	341.40	268.50	18:00	341.40	331.70
6:15	341.40	272.00	18:15	341.40	337.30
6:30	341.40	278.40	18:30	341.40	337.10
6:45	341.40	274.30	18:45	341.40	325.10
7:00	341.40	292.20	19:00	341.40	334.10
7:15	341.40	301.20	19:15	341.40	334.60
7:30	341.40	304.80	19:30	341.40	320.50
7:45	341.40	305.30	19:45	341.40	320.80
8:00	341.40	304.90	20:00	341.40	332.40
8:15	341.40	305.10	20:15	341.40	334.00
8:30	341.40	305.50	20:30	341.40	330.40
8:45	341.40	301.70	20:45	341.40	318.60
9:00	341.40	300.30	21:00	341.40	341.70
9:15	341.40	294.10	21:15	338.50	356.10
9:30	341.40	308.40	21:30	338.50	341.50
9:45	341.40	306.60	21:45	338.50	328.10
10:00	341.40	300.30	22:00	338.50	316.00
10:15	341.40	300.80	22:15	338.50	297.10
10:30	341.40	300.50	22:30	338.50	256.50
10:45	341.40	297.60	22:45	338.50	235.40
11:00	341.40	296.90	23:00	338.50	231.20
11:15	341.40	295.40	23:15	338.50	228.20
11:30	341.40	296.00	23:30	262.80	229.70
11:45	341.40	293.20	23:45	262.80	239.80

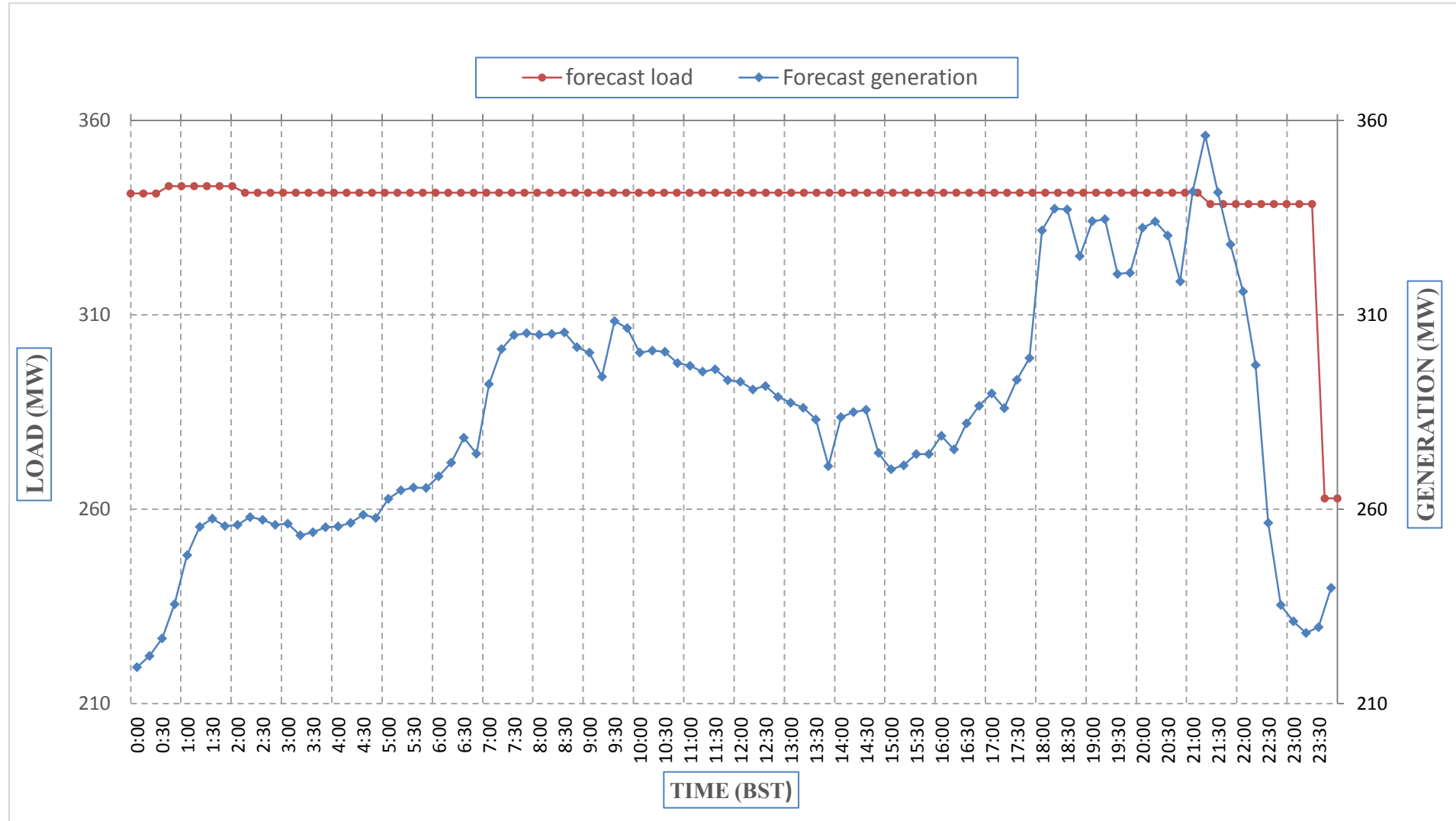
Yours faithfully,
 Tshering Yangzom



Message No.: Enter your message number
From: Shift In-charge, Control Room

Date: 6-Jan-18
Time: 11:40

Scheduled Generation & Load Forecast for Tomorrow (07-Jan-2018).



Yours faithfully,
 Tshering Yangzom

	MW
Scheduled Peak Generation(07-Jan-2018).	356.10
Forecast Peak Load(07-Jan-2018).	343.10



འབྲུག་ལྗོངས་འགོ་ལུ་ལྷན་ཁག་།
Bhutan Power Corporation Ltd.
Bhutan Power System Operator
Thimphu: Bhutan



Message No.: Enter your message number **Date:** 6-Jan-18
From: Shift In-charge, Control Room **Time:** 11:40

To
 Managing Director, BPC. Email: gemtshering@bpc.bt
 Director, O&MD, DGPC. Email: director.umd@drukgreen.com
 General Manager, TD, BPC. Email: ktobgye@bpc.bt
 Advisor, BPC. Email: bharattamang@bpc.bt

Sub: Scheduled Generation and Actual Generation of Dagachhu (05-Jan-2018).

Hours (BST)	Forecast Generation	Actual Generation	Hours (BST)	Forecast Generation	Actual Generation
0:00	24.00	23.53	12:00	24.00	24.03
0:15	24.00	23.50	12:15	24.00	24.03
0:30	24.00	23.51	12:30	24.00	24.04
0:45	24.00	23.53	12:45	24.00	24.06
1:00	24.00	23.50	13:00	24.00	24.03
1:15	24.00	23.53	13:15	24.00	24.02
1:30	24.00	23.52	13:30	24.00	24.02
1:45	24.00	23.51	13:45	24.00	24.02
2:00	24.00	23.55	14:00	24.00	24.03
2:15	24.00	23.53	14:15	24.00	24.01
2:30	24.00	23.49	14:30	24.00	24.02
2:45	24.00	23.52	14:45	24.00	23.82
3:00	24.00	23.51	15:00	24.00	24.03
3:15	24.00	23.49	15:15	24.00	24.02
3:30	24.00	23.52	15:30	24.00	24.02
3:45	24.00	23.51	15:45	24.00	24.02
4:00	24.00	23.51	16:00	24.00	24.04
4:15	24.00	23.51	16:15	24.00	23.83
4:30	24.00	23.50	16:30	24.00	23.82
4:45	24.00	23.52	16:45	24.00	23.83
5:00	24.00	23.52	17:00	24.00	23.83
5:15	24.00	23.50	17:15	24.00	23.84
5:30	24.00	23.51	17:30	24.00	23.84
6:45	24.00	23.52	17:45	24.00	23.85
6:00	24.00	23.51	18:00	24.00	23.84
6:15	24.00	24.03	18:15	24.00	23.83
6:30	24.00	24.03	18:30	24.00	23.83
6:45	24.00	24.03	18:45	24.00	23.85
7:00	24.00	24.02	19:00	24.00	23.84
7:15	24.00	24.03	19:15	24.00	23.50
7:30	24.00	24.01	19:30	24.00	23.49
7:45	24.00	24.03	19:45	24.00	23.50
8:00	24.00	24.02	20:00	24.00	23.53
8:15	24.00	24.03	20:15	24.00	23.51
8:30	24.00	24.01	20:30	24.00	23.50
8:45	24.00	24.05	20:45	24.00	23.49
9:00	24.00	24.03	21:00	24.00	23.50
9:15	24.00	24.03	21:15	24.00	23.49
9:30	24.00	24.04	21:30	24.00	23.51
9:45	24.00	24.04	21:45	24.00	23.51
10:00	24.00	24.04	22:00	24.00	23.52
10:15	24.00	24.02	22:15	24.00	23.51
10:30	24.00	24.05	22:30	24.00	23.49
10:45	24.00	24.03	22:45	24.00	23.50
11:00	24.00	24.04	23:00	24.00	23.50
11:15	24.00	24.04	23:15	24.00	23.50
11:30	24.00	24.04	23:30	24.00	23.48
11:45	24.00	24.04	23:45	24.00	23.51

Yours faithfully,
 Tshering Yangzom



འབྲུག་གྲོག་ཚེ་ལས་འཛིན།

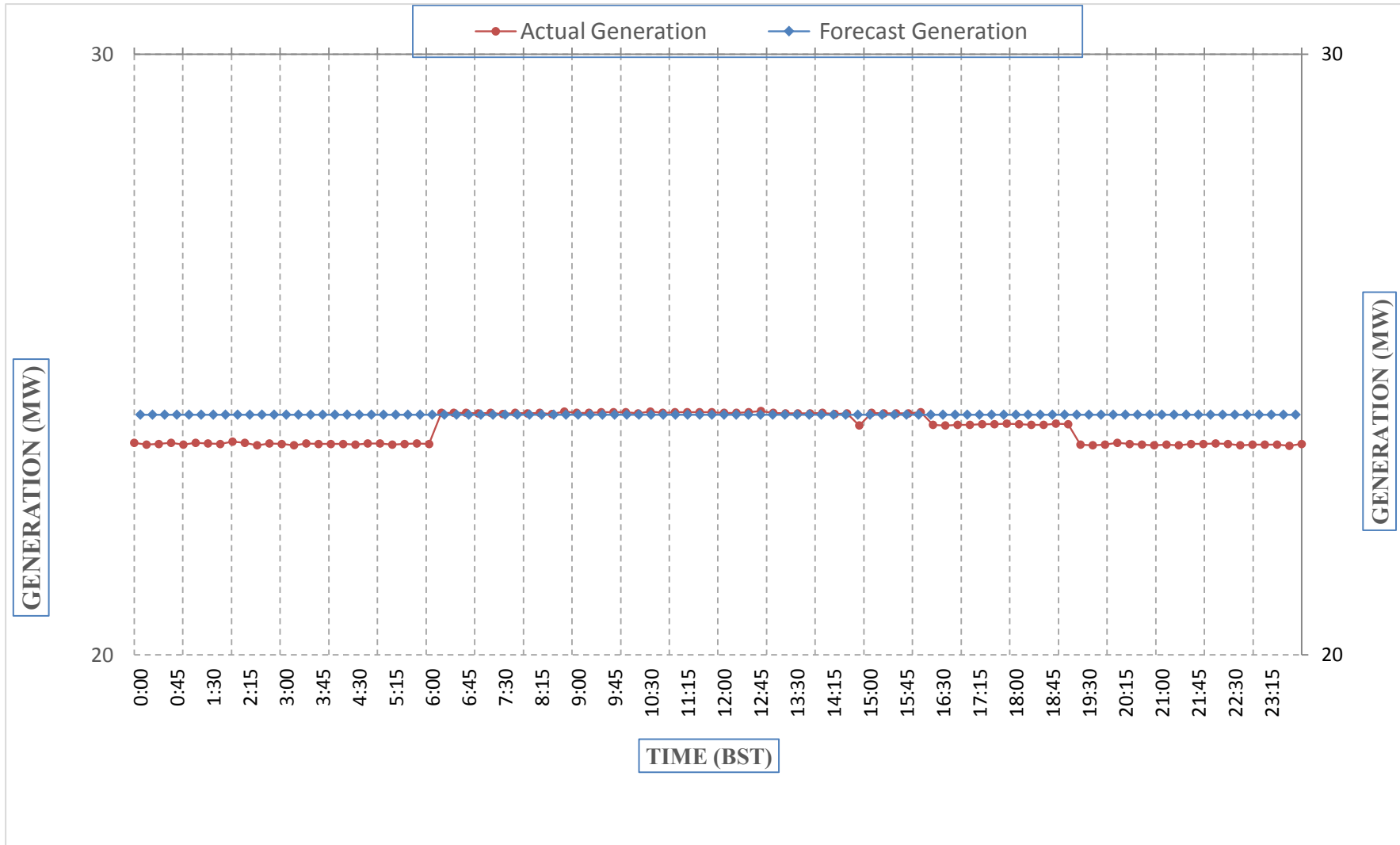
Bhutan Power Corporation Ltd.
Bhutan Power System Operator
Thimphu: Bhutan



Message No.: Enter your message number
From: Shift In-charge, Control Room

Date: 6-Jan-18
Time: 11:40

Scheduled Generation & Actual Generation of Dagachhu(05-Jan-2018).



Yours faithfully,
Tshering Yangzom