



འབྲུག་གླིང་གི་འཕེལ་རྒྱུ་

Bhutan Power Corporation Ltd.  
Bhutan Power System Operator  
Thimphu: Bhutan



Message No.: Enter your message number  
From: Shift In-charge, Control Room

Date: 3-Jan-18  
Time: 9:34

To  
Managing Director, BPC. Email: gemtshering@bpc.bt  
Director, O&MD, DGPC. Email: director.omb@drukgreen.com  
General Manager, TD, BPC. Email: ktobgye@bpc.bt  
General Manager, DCSD, BPC. Email: sandeeprai@bpc.bt

Sub: **Load Generation Balance Report of Yesterday (02-Jan-2018).**

Hours (BST)	Forecast		Actual		Hours (BST)	Forecast		Actual	
	Load	Generation	Load	Generation		Load	Generation	Load	Generation
0:00	276.60	335.90	258.98	387.07	12:00	291.70	335.90	286.96	336.38
0:15	273.50	335.90	265.16	337.45	12:15	294.20	335.90	284.16	334.85
0:30	271.00	335.90	267.13	336.71	12:30	292.40	335.90	280.45	334.92
0:45	268.70	335.90	264.43	337.27	12:45	290.90	335.90	280.97	335.47
1:00	264.60	335.90	261.80	338.84	13:00	286.70	335.90	274.26	336.77
1:15	265.50	335.90	262.64	337.73	13:15	285.40	335.90	274.37	337.27
1:30	265.50	335.90	266.53	337.70	13:30	283.60	335.90	248.26	339.45
1:45	260.30	335.90	262.17	337.31	13:45	253.10	335.90	246.53	342.62
2:00	264.10	335.90	257.75	336.02	14:00	281.30	335.90	277.31	344.24
2:15	261.90	335.90	260.18	337.03	14:15	281.10	335.90	273.45	342.77
2:30	263.40	335.90	261.47	337.88	14:30	281.40	335.90	275.67	343.61
2:45	262.20	335.90	255.88	337.92	14:45	243.90	335.90	277.45	344.64
3:00	260.70	335.90	257.45	337.00	15:00	242.70	335.90	268.15	343.74
3:15	259.60	335.90	259.77	338.13	15:15	242.00	335.90	270.01	342.26
3:30	261.10	335.90	254.54	336.65	15:30	242.50	335.90	280.30	345.00
3:45	259.10	335.90	254.09	335.87	15:45	241.50	335.90	272.20	344.51
4:00	255.00	335.90	250.10	336.99	16:00	243.40	335.90	275.25	345.59
4:15	253.70	335.90	253.17	337.24	16:15	245.40	335.90	273.45	344.67
4:30	254.00	335.90	256.40	335.63	16:30	246.50	335.90	280.45	344.89
4:45	253.50	335.90	256.10	338.21	16:45	247.50	335.90	287.00	347.34
5:00	256.10	335.90	260.86	337.39	17:00	251.60	335.90	292.28	346.82
5:15	256.70	335.90	264.43	336.36	17:15	218.40	335.90	298.02	346.11
5:30	258.60	335.90	266.43	336.76	17:30	222.60	335.90	306.41	347.75
5:45	259.30	335.90	267.00	337.64	17:45	227.70	335.90	323.93	346.54
6:00	242.60	335.90	268.55	335.70	18:00	330.50	335.90	330.94	346.16
6:15	248.00	335.90	260.92	338.63	18:15	329.40	335.90	332.50	359.24
6:30	250.30	335.90	277.31	333.29	18:30	331.20	335.90	335.72	359.24
6:45	254.10	335.90	281.48	335.52	18:45	290.40	335.90	331.90	358.02
7:00	245.80	335.90	291.92	337.45	19:00	326.40	335.90	337.27	355.86
7:15	249.10	335.90	300.86	338.70	19:15	328.10	335.90	332.66	354.38
7:30	251.20	335.90	303.77	337.04	19:30	286.80	335.90	331.95	353.99
7:45	254.60	335.90	305.90	337.66	19:45	284.40	335.90	319.45	351.31
8:00	278.20	335.90	308.09	336.80	20:00	316.30	335.90	325.33	351.71
8:15	293.60	335.90	302.60	337.09	20:15	315.60	335.90	321.06	351.42
8:30	292.90	335.90	307.66	338.09	20:30	313.80	335.90	319.19	350.66
8:45	293.20	335.90	305.06	336.33	20:45	276.00	335.90	312.66	351.31
9:00	303.30	335.90	304.84	335.11	21:00	311.40	335.90	310.77	350.41
9:15	323.20	335.90	298.86	336.21	21:15	323.60	335.90	312.62	349.88
9:30	310.40	335.90	304.50	334.71	21:30	332.60	335.90	304.61	350.37
9:45	307.40	335.90	293.40	335.06	21:45	333.10	335.90	299.46	351.29
10:00	294.00	335.90	296.65	336.38	22:00	333.30	335.90	293.71	349.87
10:15	293.50	335.90	279.55	337.20	22:15	326.50	335.90	290.00	369.91
10:30	291.90	335.90	286.75	336.26	22:30	321.10	335.90	285.27	369.51
10:45	293.00	335.90	290.20	337.53	22:45	312.00	335.90	274.88	368.88
11:00	293.70	335.90	297.58	338.20	23:00	305.60	335.90	276.59	369.41
11:15	294.50	335.90	296.03	337.78	23:15	288.70	335.90	273.00	367.93
11:30	297.00	335.90	296.80	335.15	23:30	280.70	335.90	272.34	369.29
11:45	294.90	335.90	287.11	337.18	23:45	277.50	335.90	270.54	368.86

Yours faithfully  
Tshering Deki

Coincidental peak load of Day(Last year):	
279.55	3-Jan-17
Maximum Load till date:	
362.09 MW	14-Nov-17



འབྲུག་གློག་ལེ་ལས་འཛིན།

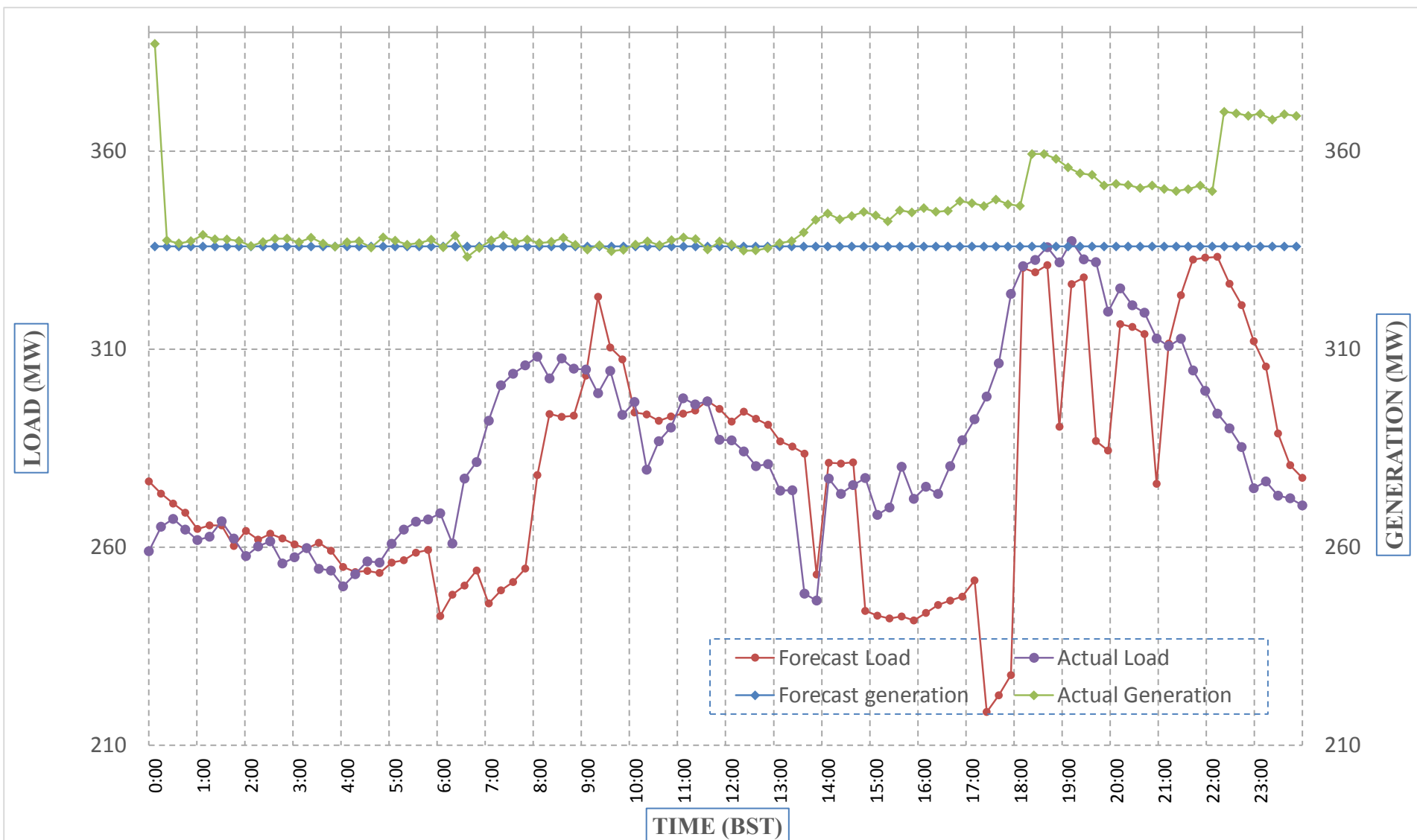
Bhutan Power Corporation Ltd.  
 Bhutan Power System Operator  
 Thimphu: Bhutan



Message No.: Enter your message number  
 From: Shift In-charge, Control Room

Date: 3-Jan-18  
 Time: 9:34

Forecast Generation & Load with Actual Generation & Load (02-Jan-2018).



Yours faithfully,  
 Tshering Deki

	MW	Coincidental peak load of Day(Last year):	
Peak Co-incident Generation(02-Jan-2018).	387.07	279.55	3-Jan-17
Peak Co-incident Load(02-Jan-2018).	337.27		
		Maximum Load till date:	
		362.09 MW	14-Nov-17

Telephone: +975-02335631; Fax: +975-02335632; Email: bhutansystemoperator@bpc.bt; www.bpc.bt



ལྷན་སྐྱོང་གི་ལས་འཛིན།

Bhutan Power Corporation Ltd.  
Bhutan Power System Operator  
Thimphu: Bhutan



Message No.: Enter your message number  
From: Shift In-charge, Control Room

Date: 3-Jan-18  
Time: 9:34

To  
Managing Director, BPC. Email: gemtshering@bpc.bt  
Director, O&MD, DGPC. Email: director.umd@drukgreen.com  
General Manager, TD, BPC. Email: thinleygyeltshen@bpc.bt  
General Manager, DCSD, BPC. Email: sandeeprai@bpc.bt

Sub: Load Generation Balance Report of Today (03-Jan-2018).

Hours (BST)	Forecast		Actual	
	Load	Generation	Load	Generation
0:00	273.40	344.00	268.50	368.59
0:15	270.50	344.00	264.55	369.09
0:30	268.30	344.00	264.51	368.73
0:45	266.00	344.00	259.00	368.60
1:00	261.60	344.00	258.81	369.02
1:15	259.40	344.00	255.27	367.33
1:30	258.10	344.00	255.54	367.13
1:45	251.90	344.00	254.46	366.83
2:00	250.90	344.00	254.31	282.47
2:15	235.20	344.00	256.32	366.91
2:30	233.70	344.00	253.11	366.63
2:45	225.70	344.00	245.77	367.41
3:00	210.70	344.00	251.95	366.49
3:15	206.00	344.00	249.74	341.66
3:30	204.70	344.00	251.50	340.44
3:45	196.00	344.00	253.36	337.95
4:00	199.70	344.00	258.13	339.67
4:15	203.10	344.00	257.80	340.24
4:30	205.60	344.00	251.70	338.73
4:45	204.20	344.00	253.35	338.25
5:00	205.90	344.00	261.03	339.23
5:15	214.70	344.00	262.15	337.82
5:30	219.10	344.00	267.17	337.63
5:45	220.10	344.00	267.47	337.87
6:00	239.50	344.00	262.16	336.62
6:15	246.30	344.00	267.68	336.60
6:30	256.70	344.00	273.38	338.85
6:45	195.50	344.00	286.05	337.28
7:00	276.80	344.00	292.95	336.77
7:15	278.80	344.00	297.76	337.72
7:30	275.90	344.00	310.80	340.19
7:45	270.90	344.00	311.70	337.27
8:00	253.10	344.00	316.25	338.59
8:15	240.90	344.00	309.81	336.80
8:30	238.10	344.00	308.84	317.28
8:45	240.20	344.00	303.97	317.64
9:00	302.70	344.00	304.01	318.12

Coincidental peak load of Day(Last year):	
282.47	4-Jan-17
Maximum Load till date:	
362.09 MW	14-Nov-17

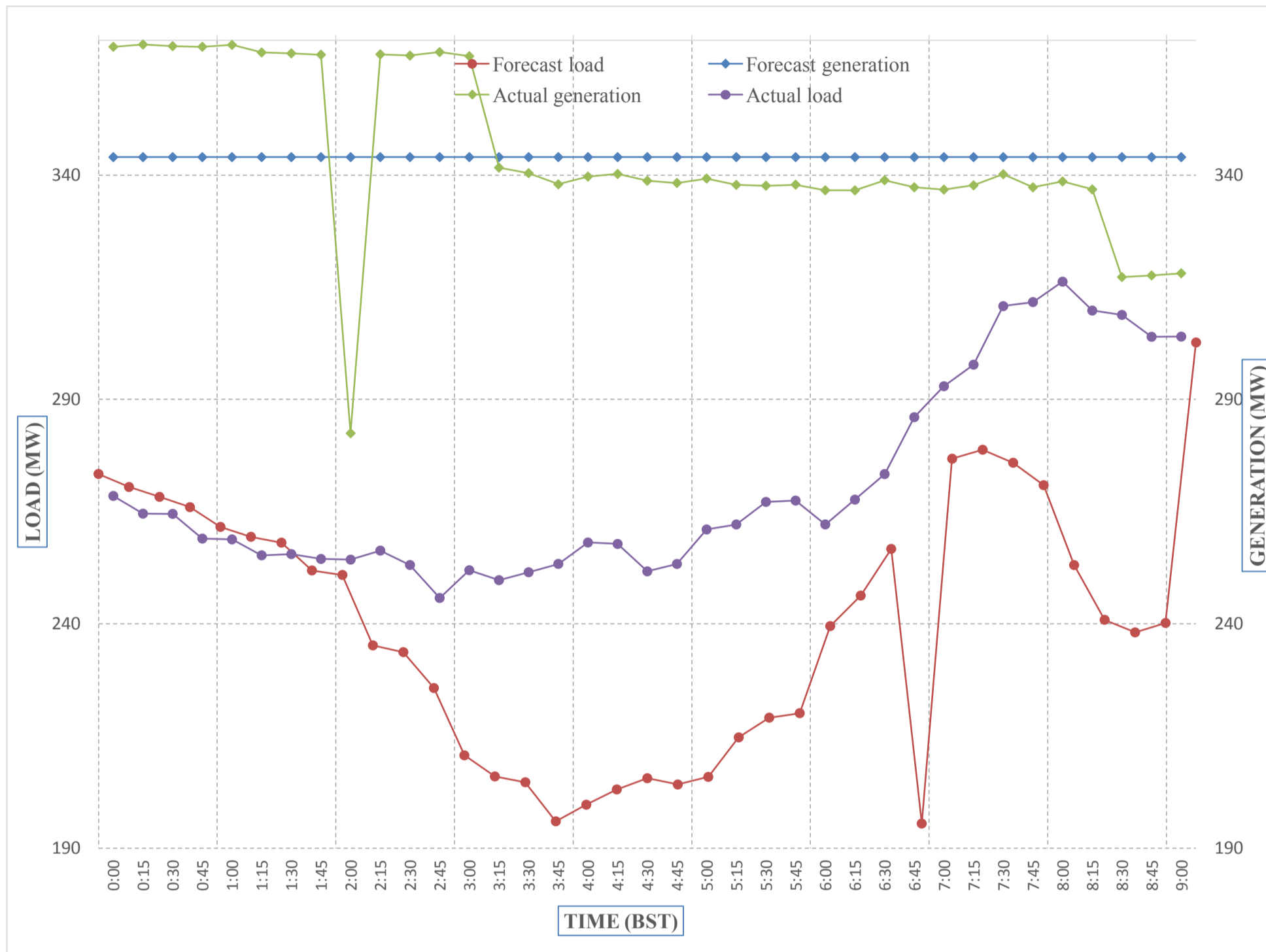
Yours faithfully,  
Tshering Deki



Message No.: Enter your message number  
 From: Shift In-charge, Control Room

Date: 3-Jan-18  
 Time: 9:34

**Forecast Generation & Load with Actual Generation & Load of Today from 00:00hrs to 09:00hrs(03-Jan-2018).**



Yours faithfully  
 Tshering Deki

<b>Coincidental peak load of</b>	
282.47	4-Jan-17

<b>Maximum Load till date:</b>	
362.09 MW	14-Nov-17



འབྲུག་གི་འོ་ལྷན་ཁང་།  
**Bhutan Power Corporation Ltd.**  
**Bhutan Power System Operator**  
 Thimphu: Bhutan



**Message No.:** Enter your message number **Date:** 3-Jan-18  
**From:** Shift In-charge, Control Room **Time:** 9:34

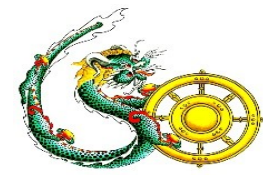
**To**  
 Managing Director, BPC. Email: gemtshering@bpc.bt  
 Director, O&MD, DGPC. Email: director.umd@drukgreen.com  
 General Manager, TD, BPC. Email: ktobgye@bpc.bt  
 Advisor, BPC. Email: bharattamang@bpc.bt

**Sub:** Load Generation Balance Report of Tomorrow (04-Jan-2018).

Hours (BST)	Forecast		Hours (BST)	Forecast	
	Load	Generation		Load	Generation
0:00	271.80	332.50	12:00	290.20	332.50
0:15	265.80	332.50	12:15	288.40	332.50
0:30	263.20	332.50	12:30	289.20	332.50
0:45	256.00	332.50	12:45	286.10	332.50
1:00	232.00	332.50	13:00	281.60	332.50
1:15	205.80	332.50	13:15	280.90	332.50
1:30	204.90	332.50	13:30	276.20	332.50
1:45	203.30	332.50	13:45	259.10	332.50
2:00	205.10	332.50	14:00	282.70	332.50
2:15	215.30	332.50	14:15	280.70	332.50
2:30	217.50	332.50	14:30	281.80	332.50
2:45	220.00	332.50	14:45	259.20	332.50
3:00	234.40	332.50	15:00	256.30	332.50
3:15	230.10	332.50	15:15	257.50	332.50
3:30	239.60	332.50	15:30	261.10	332.50
3:45	244.60	332.50	15:45	258.20	332.50
4:00	247.80	332.50	16:00	261.00	332.50
4:15	252.00	332.50	16:15	257.30	332.50
4:30	258.00	332.50	16:30	261.10	332.50
4:45	257.30	332.50	16:45	264.40	332.50
5:00	261.70	332.50	17:00	267.60	332.50
5:15	264.20	332.50	17:15	254.40	332.50
5:30	266.70	332.50	17:30	259.80	332.50
6:45	268.00	332.50	17:45	268.30	332.50
6:00	269.10	332.50	18:00	328.90	332.50
6:15	272.50	332.50	18:15	333.60	332.50
6:30	279.30	332.50	18:30	336.00	332.50
6:45	255.90	332.50	18:45	310.80	332.50
7:00	292.40	332.50	19:00	331.00	332.50
7:15	299.40	332.50	19:15	330.80	332.50
7:30	303.00	332.50	19:30	305.90	332.50
7:45	304.00	332.50	19:45	304.20	332.50
8:00	306.40	332.50	20:00	321.50	332.50
8:15	306.70	332.50	20:15	318.90	332.50
8:30	302.90	332.50	20:30	318.00	332.50
8:45	289.80	332.50	20:45	296.80	332.50
9:00	237.80	332.50	21:00	335.40	332.50
9:15	328.40	332.50	21:15	344.50	332.50
9:30	309.00	332.50	21:30	348.30	332.50
9:45	303.70	332.50	21:45	342.40	332.50
10:00	292.70	332.50	22:00	338.40	332.50
10:15	294.50	332.50	22:15	325.70	332.50
10:30	294.00	332.50	22:30	315.50	332.50
10:45	294.00	332.50	22:45	308.20	332.50
11:00	292.20	332.50	23:00	304.20	332.50
11:15	292.20	332.50	23:15	283.40	332.50
11:30	295.60	332.50	23:30	271.20	332.50
11:45	291.60	332.50	23:45	265.30	332.50

Yours faithfully,  
 Tshering Deki





Message No.: Enter your message number  
 From: Shift In-charge, Control Room

Date: 3-Jan-18  
 Time: 9:34

**Scheduled Generation & Load Forecast for Tomorrow (04-Jan-2018).**



Yours faithfully,  
 Tshering Deki

	MW
Scheduled Peak Generation(04-Jan-2018).	332.50
Forecast Peak Load(04-Jan-2018).	348.30



འབྲུག་གྲོག་ལེན་ལུ་ཁྲིའུ་  
**Bhutan Power Corporation Ltd.**  
**Bhutan Power System Operator**  
 Thimphu: Bhutan



**Message No.:** Enter your message number **Date:** 3-Jan-18  
**From:** Shift In-charge, Control Room **Time:** 9:34

**To**  
 Managing Director, BPC. Email: gemtshering@bpc.bt  
 Director, O&MD, DGPC. Email: director.umd@drukgreen.com  
 General Manager, TD, BPC. Email: ktobgye@bpc.bt  
 Advisor, BPC. Email: bharattamang@bpc.bt

**Sub:** Scheduled Generation and Actual Generation of Dagachhu (02-Jan-2018).

Hours (BST)	Forecast Generation	Actual Generation	Hours (BST)	Forecast Generation	Actual Generation
0:00	24	24.00	12:00	24	24.30
0:15	24	24.01	12:15	24	24.29
0:30	24	24.00	12:30	24	24.01
0:45	24	24.01	12:45	24	24.02
1:00	24	24.01	13:00	24	24.01
1:15	24	24.00	13:15	24	24.01
1:30	24	24.00	13:30	24	24.01
1:45	24	24.00	13:45	24	24.03
2:00	24	24.00	14:00	24	24.07
2:15	24	24.03	14:15	24	24.02
2:30	24	24.00	14:30	24	24.05
2:45	24	24.01	14:45	24	24.02
3:00	24	24.02	15:00	24	24.03
3:15	24	24.01	15:15	24	24.02
3:30	24	24.01	15:30	24	24.04
3:45	24	24.01	15:45	24	24.04
4:00	24	23.98	16:00	24	24.04
4:15	24	24.00	16:15	24	24.03
4:30	24	24.00	16:30	24	24.03
4:45	24	24.00	16:45	24	24.05
5:00	24	24.01	17:00	24	24.03
5:15	24	24.01	17:15	24	24.03
5:30	24	24.00	17:30	24	24.05
6:45	24	24.00	17:45	24	24.03
6:00	24	24.00	18:00	24	24.04
6:15	24	24.01	18:15	24	24.03
6:30	24	24.02	18:30	24	24.04
6:45	24	23.02	18:45	24	24.04
7:00	24	24.31	19:00	24	23.71
7:15	24	24.29	19:15	24	23.71
7:30	24	24.30	19:30	24	23.72
7:45	24	24.03	19:45	24	23.72
8:00	24	24.02	20:00	24	23.52
8:15	24	24.03	20:15	24	23.52
8:30	24	24.02	20:30	24	23.50
8:45	24	24.02	20:45	24	23.50
9:00	24	24.01	21:00	24	23.53
9:15	24	24.02	21:15	24	23.51
9:30	24	24.01	21:30	24	23.51
9:45	24	24.01	21:45	24	23.50
10:00	24	24.02	22:00	24	23.52
10:15	24	24.01	22:15	24	23.52
10:30	24	24.01	22:30	24	23.50
10:45	24	24.01	22:45	24	23.51
11:00	24	24.31	23:00	24	23.51
11:15	24	24.30	23:15	24	23.53
11:30	24	24.31	23:30	24	23.50
11:45	24	24.30	23:45	24	23.52

Yours faithfully,  
 Tshering Deki



འབྲུག་གྲོག་མེ་ལས་འཛིན།

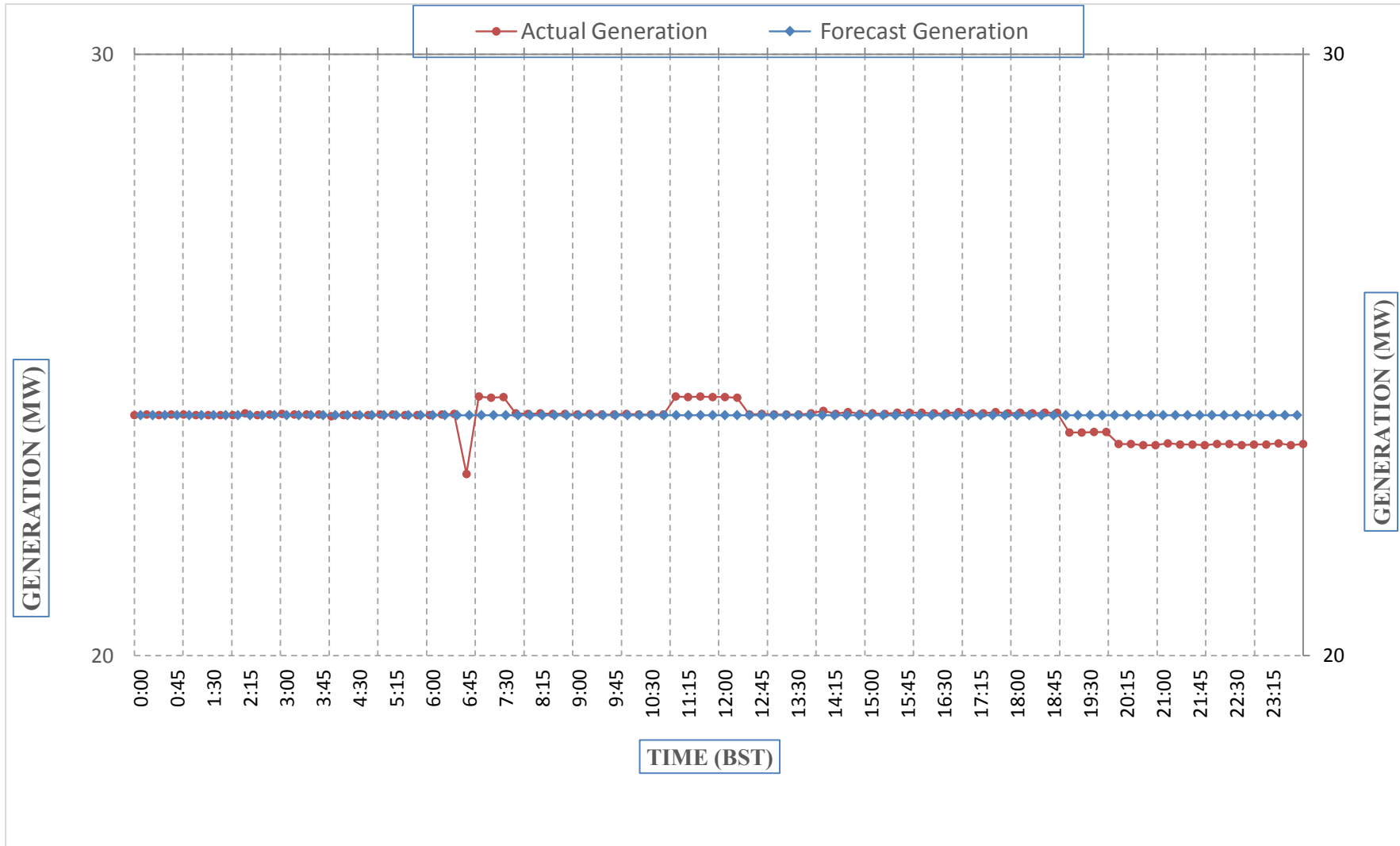
Bhutan Power Corporation Ltd.  
Bhutan Power System Operator  
Thimphu: Bhutan



Message No.: Enter your message number  
From: Shift In-charge, Control Room

Date: 3-Jan-18  
Time: 9:34

Scheduled Generation & Actual Generation of Dagachhu(02-Jan-2018).



Yours faithfully,  
Tshering Deki