



འབྲུག་གླིང་མེ་ལམ་འཛིན།

Bhutan Power Corporation Ltd.
Bhutan Power System Operator
Thimphu: Bhutan



Message No.: Enter your message number
From: Shift In-charge, Control Room

Date: 2-Jan-18
Time: 12:09

To
Managing Director, BPC. Email: gemtshering@bpc.bt
Director, O&MD, DGPC. Email: director.omb@drukgreen.com
General Manager, TD, BPC. Email: ktobgye@bpc.bt
General Manager, DCSD, BPC. Email: sandeeprai@bpc.bt

Sub: **Load Generation Balance Report of Yesterday (01-Jan-2018).**

Hours (BST)	Forecast		Actual		Hours (BST)	Forecast		Actual	
	Load	Generation	Load	Generation		Load	Generation	Load	Generation
0:00	285.50	346.90	261.61	373.80	12:00	295.70	346.90	285.63	353.86
0:15	281.00	346.90	258.78	372.69	12:15	298.10	346.90	279.15	354.05
0:30	278.20	346.90	259.48	344.57	12:30	296.10	346.90	284.18	353.94
0:45	274.90	346.90	255.25	342.89	12:45	293.80	346.90	288.20	354.20
1:00	272.30	346.90	250.17	342.41	13:00	289.00	346.90	285.16	352.79
1:15	273.00	346.90	255.90	343.40	13:15	288.10	346.90	277.11	354.21
1:30	273.00	346.90	254.52	342.42	13:30	285.40	346.90	288.91	353.02
1:45	266.10	346.90	253.92	344.10	13:45	244.10	346.90	292.58	352.08
2:00	270.20	346.90	243.91	342.23	14:00	282.10	346.90	288.69	354.04
2:15	267.90	346.90	246.11	342.14	14:15	282.00	346.90	287.72	358.29
2:30	270.30	346.90	248.10	323.26	14:30	282.30	346.90	289.25	358.56
2:45	268.60	346.90	247.86	323.43	14:45	283.40	346.90	282.94	360.72
3:00	268.00	346.90	248.59	325.60	15:00	281.50	346.90	281.73	361.81
3:15	265.70	346.90	247.04	331.30	15:15	281.10	346.90	278.91	361.38
3:30	267.40	346.90	248.95	332.94	15:30	282.10	346.90	287.37	363.11
3:45	264.50	346.90	235.96	334.05	15:45	280.60	346.90	289.98	362.92
4:00	266.90	346.90	248.57	334.67	16:00	283.50	346.90	291.72	363.65
4:15	267.90	346.90	250.78	333.08	16:15	286.00	346.90	279.77	383.31
4:30	269.20	346.90	249.30	335.55	16:30	287.40	346.90	285.74	384.40
4:45	271.20	346.90	238.96	334.53	16:45	289.10	346.90	291.30	384.23
5:00	271.40	346.90	244.44	334.96	17:00	294.50	346.90	281.14	383.12
5:15	273.60	346.90	251.05	329.49	17:15	255.40	346.90	292.51	384.10
5:30	276.80	346.90	257.34	330.70	17:30	261.70	346.90	301.59	383.76
5:45	277.90	346.90	256.75	329.60	17:45	269.30	346.90	298.95	384.89
6:00	281.00	346.90	260.11	328.68	18:00	329.00	346.90	313.01	385.41
6:15	284.70	346.90	264.03	331.45	18:15	328.60	346.90	335.54	385.05
6:30	294.30	346.90	266.69	330.66	18:30	330.40	346.90	342.23	382.98
6:45	298.00	346.90	259.50	329.60	18:45	276.00	346.90	343.98	383.11
7:00	306.60	346.90	266.80	330.54	19:00	325.60	346.90	339.59	383.06
7:15	312.20	346.90	288.46	330.45	19:15	325.50	346.90	335.26	380.99
7:30	313.50	346.90	294.43	330.63	19:30	272.70	346.90	333.42	381.89
7:45	314.20	346.90	301.27	331.02	19:45	271.00	346.90	335.64	380.63
8:00	314.20	346.90	303.57	329.58	20:00	316.40	346.90	336.48	381.12
8:15	318.10	346.90	297.63	332.02	20:15	316.40	346.90	317.78	398.66
8:30	316.90	346.90	305.09	332.54	20:30	317.00	346.90	312.98	399.16
8:45	309.30	346.90	302.30	335.09	20:45	264.20	346.90	310.16	398.03
9:00	312.20	346.90	303.02	337.47	21:00	311.10	346.90	307.66	398.50
9:15	336.30	346.90	305.45	356.32	21:15	318.70	346.90	304.03	392.43
9:30	319.40	346.90	298.53	354.70	21:30	326.20	346.90	293.40	393.02
9:45	315.10	346.90	298.45	354.14	21:45	327.70	346.90	283.33	391.65
10:00	298.30	346.90	302.47	354.27	22:00	327.50	346.90	272.68	389.82
10:15	297.00	346.90	300.45	354.85	22:15	334.00	346.90	272.66	389.12
10:30	294.90	346.90	302.24	353.81	22:30	330.80	346.90	273.48	389.58
10:45	296.10	346.90	291.53	352.81	22:45	322.90	346.90	267.50	387.99
11:00	297.70	346.90	283.21	353.23	23:00	309.40	346.90	269.40	387.08
11:15	299.10	346.90	276.85	353.85	23:15	293.10	346.90	264.66	387.05
11:30	300.90	346.90	284.72	353.41	23:30	284.70	346.90	262.99	387.34
11:45	299.20	346.90	287.30	354.52	23:45	282.60	346.90	259.01	386.39

Yours faithfully
Tshering Deki

Coincidental peak load of Day(Last year):	
266.48	3-Jan-17
Maximum Load till date:	
362.09 MW	14-Nov-17



འབྲུག་གློག་ལེ་ལས་འཛིན།

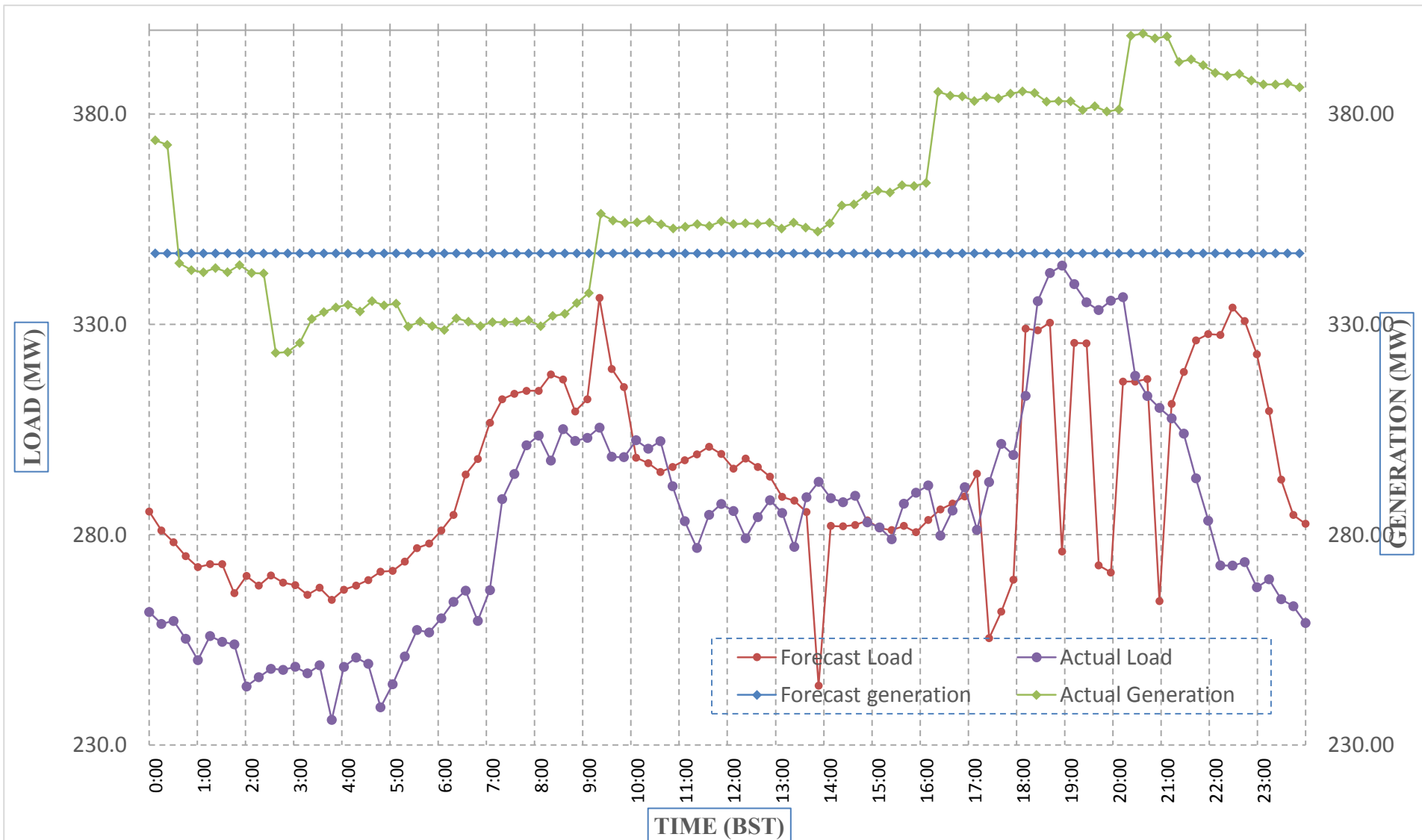
Bhutan Power Corporation Ltd.
 Bhutan Power System Operator
 Thimphu: Bhutan



Message No.: Enter your message number
 From: Shift In-charge, Control Room

Date: 2-Jan-18
 Time: 12:09

Forecast Generation & Load with Actual Generation & Load (01-Jan-2018).



Yours faithfully,
 Tshering Deki

	MW	Coincidental peak load of Day(Last year):	
Peak Co-incident Generation(01-Jan-2018).	399.16	266.48	3-Jan-17
Peak Co-incident Load(01-Jan-2018).	343.98		
		Maximum Load till date:	
		362.09 MW	14-Nov-17

Telephone: +975-02335631; Fax: +975-02335632; Email: bhutansystemoperator@bpc.bt; www.bpc.bt



འབྲུག་གློག་ལེ་ལས་འཛིན།

Bhutan Power Corporation Ltd.
Bhutan Power System Operator
Thimphu: Bhutan



Message No.: Enter your message number
From: Shift In-charge, Control Room

Date: 2-Jan-18
Time: 12:09

To
Managing Director, BPC. Email: gemtshering@bpc.bt
Director, O&MD, DGPC. Email: director.omb@drukgreen.com
General Manager, TD, BPC. Email: thinleygyeltshen@bpc.bt
General Manager, DCSD, BPC. Email: sandeeprai@bpc.bt

Sub: Load Generation Balance Report of Today (02-Jan-2018).

Hours (BST)	Forecast		Actual	
	Load	Generation	Load	Generation
0:00	276.60	335.90	261.61	373.80
0:15	273.50	335.90	258.78	372.69
0:30	271.00	335.90	259.48	344.57
0:45	268.70	335.90	255.25	342.89
1:00	264.60	335.90	250.17	342.41
1:15	265.50	335.90	255.90	343.40
1:30	265.50	335.90	254.52	342.42
1:45	260.30	335.90	253.92	344.10
2:00	264.10	335.90	243.91	342.23
2:15	261.90	335.90	246.11	342.14
2:30	263.40	335.90	248.10	323.26
2:45	262.20	335.90	247.86	323.43
3:00	260.70	335.90	248.59	325.60
3:15	259.60	335.90	247.04	331.30
3:30	261.10	335.90	248.95	332.94
3:45	259.10	335.90	235.96	334.05
4:00	255.00	335.90	248.57	334.67
4:15	253.70	335.90	250.78	333.08
4:30	254.00	335.90	249.30	335.55
4:45	253.50	335.90	238.96	334.53
5:00	256.10	335.90	244.44	334.96
5:15	256.70	335.90	251.05	329.49
5:30	258.60	335.90	257.34	330.70
5:45	259.30	335.90	256.75	329.60
6:00	242.60	335.90	260.11	328.68
6:15	248.00	335.90	264.03	331.45
6:30	250.30	335.90	266.69	330.66
6:45	254.10	335.90	259.50	329.60
7:00	245.80	335.90	266.80	330.54
7:15	249.10	335.90	288.46	330.45
7:30	251.20	335.90	294.43	330.63
7:45	254.60	335.90	301.27	331.02
8:00	278.20	335.90	303.57	329.58
8:15	293.60	335.90	297.63	332.02
8:30	292.90	335.90	305.09	332.54
8:45	293.20	335.90	302.30	335.09
9:00	303.30	335.90	303.02	337.47

Coincidental peak load of Day(Last year):	
279.55	4-Jan-17
Maximum Load till date:	
362.09 MW	14-Nov-17

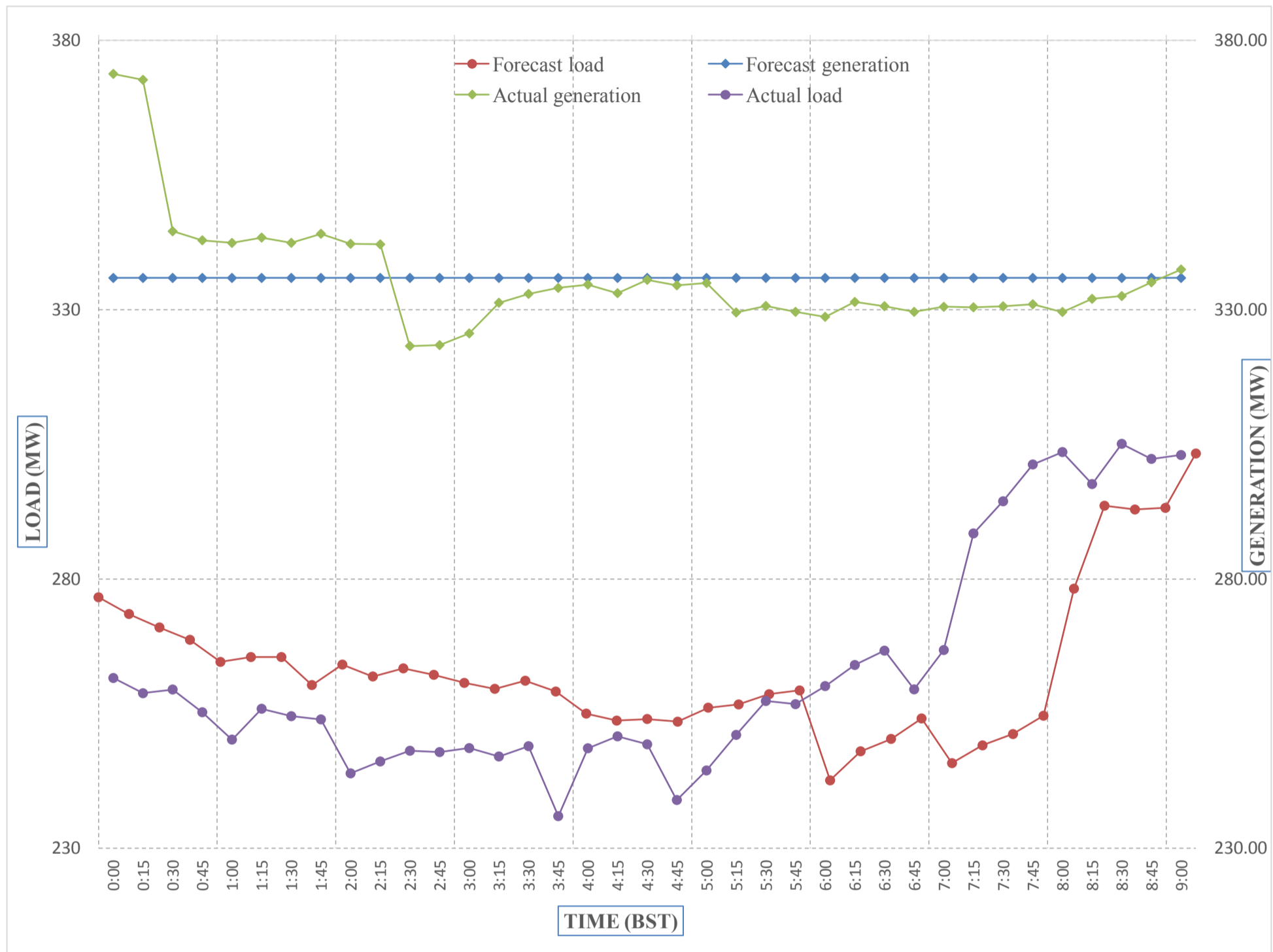
Yours faithfully,
Tshering Deki



Message No.: Enter your message number
 From: Shift In-charge, Control Room

Date: 2-Jan-18
 Time: 12:09

Forecast Generation & Load with Actual Generation & Load of Today from 00:00hrs to 09:00hrs(02-Jan-2018).



Yours faithfully
 Tshering Deki

Coincidental peak load of	
279.55	4-Jan-17

Maximum Load till date:	
362.09 MW	14-Nov-17



འབྲུག་གི་འོ་ལྷན་ཁུངས་ལ.ལོ.
Bhutan Power Corporation Ltd.
Bhutan Power System Operator
 Thimphu: Bhutan



Message No.: Enter your message number **Date:** 2-Jan-18
From: Shift In-charge, Control Room **Time:** 12:09

To
 Managing Director, BPC. Email: gemtshering@bpc.bt
 Director, O&MD, DGPC. Email: director.umd@drukgreen.com
 General Manager, TD, BPC. Email: ktobgye@bpc.bt
 Advisor, BPC. Email: bharattamang@bpc.bt

Sub: Load Generation Balance Report of Tomorrow (03-Jan-2018).

Hours (BST)	Forecast		Hours (BST)	Forecast	
	Load	Generation		Load	Generation
0:00	273.40	344.00	12:00	291.20	344.00
0:15	270.50	344.00	12:15	290.20	344.00
0:30	268.30	344.00	12:30	291.90	344.00
0:45	266.00	344.00	12:45	290.30	344.00
1:00	261.60	344.00	13:00	284.60	344.00
1:15	259.40	344.00	13:15	285.10	344.00
1:30	258.10	344.00	13:30	285.90	344.00
1:45	251.90	344.00	13:45	263.10	344.00
2:00	250.90	344.00	14:00	283.40	344.00
2:15	235.20	344.00	14:15	283.00	344.00
2:30	233.70	344.00	14:30	281.90	344.00
2:45	225.70	344.00	14:45	253.80	344.00
3:00	210.70	344.00	15:00	251.80	344.00
3:15	206.00	344.00	15:15	252.50	344.00
3:30	204.70	344.00	15:30	255.30	344.00
3:45	196.00	344.00	15:45	253.10	344.00
4:00	199.70	344.00	16:00	256.10	344.00
4:15	203.10	344.00	16:15	255.50	344.00
4:30	205.60	344.00	16:30	256.60	344.00
4:45	204.20	344.00	16:45	258.00	344.00
5:00	205.90	344.00	17:00	259.00	344.00
5:15	214.70	344.00	17:15	238.40	344.00
5:30	219.10	344.00	17:30	244.60	344.00
6:45	220.10	344.00	17:45	247.90	344.00
6:00	239.50	344.00	18:00	327.70	344.00
6:15	246.30	344.00	18:15	331.30	344.00
6:30	256.70	344.00	18:30	334.10	344.00
6:45	195.50	344.00	18:45	303.10	344.00
7:00	276.80	344.00	19:00	328.00	344.00
7:15	278.80	344.00	19:15	330.20	344.00
7:30	275.90	344.00	19:30	296.80	344.00
7:45	270.90	344.00	19:45	298.10	344.00
8:00	253.10	344.00	20:00	320.50	344.00
8:15	240.90	344.00	20:15	316.20	344.00
8:30	238.10	344.00	20:30	315.40	344.00
8:45	240.20	344.00	20:45	288.40	344.00
9:00	302.70	344.00	21:00	320.80	344.00
9:15	333.50	344.00	21:15	331.80	344.00
9:30	310.40	344.00	21:30	338.20	344.00
9:45	305.90	344.00	21:45	336.30	344.00
10:00	295.90	344.00	22:00	334.90	344.00
10:15	295.60	344.00	22:15	315.90	344.00
10:30	295.30	344.00	22:30	309.90	344.00
10:45	293.90	344.00	22:45	303.20	344.00
11:00	290.80	344.00	23:00	297.80	344.00
11:15	290.90	344.00	23:15	283.80	344.00
11:30	295.10	344.00	23:30	276.90	344.00
11:45	292.90	344.00	23:45	275.20	344.00

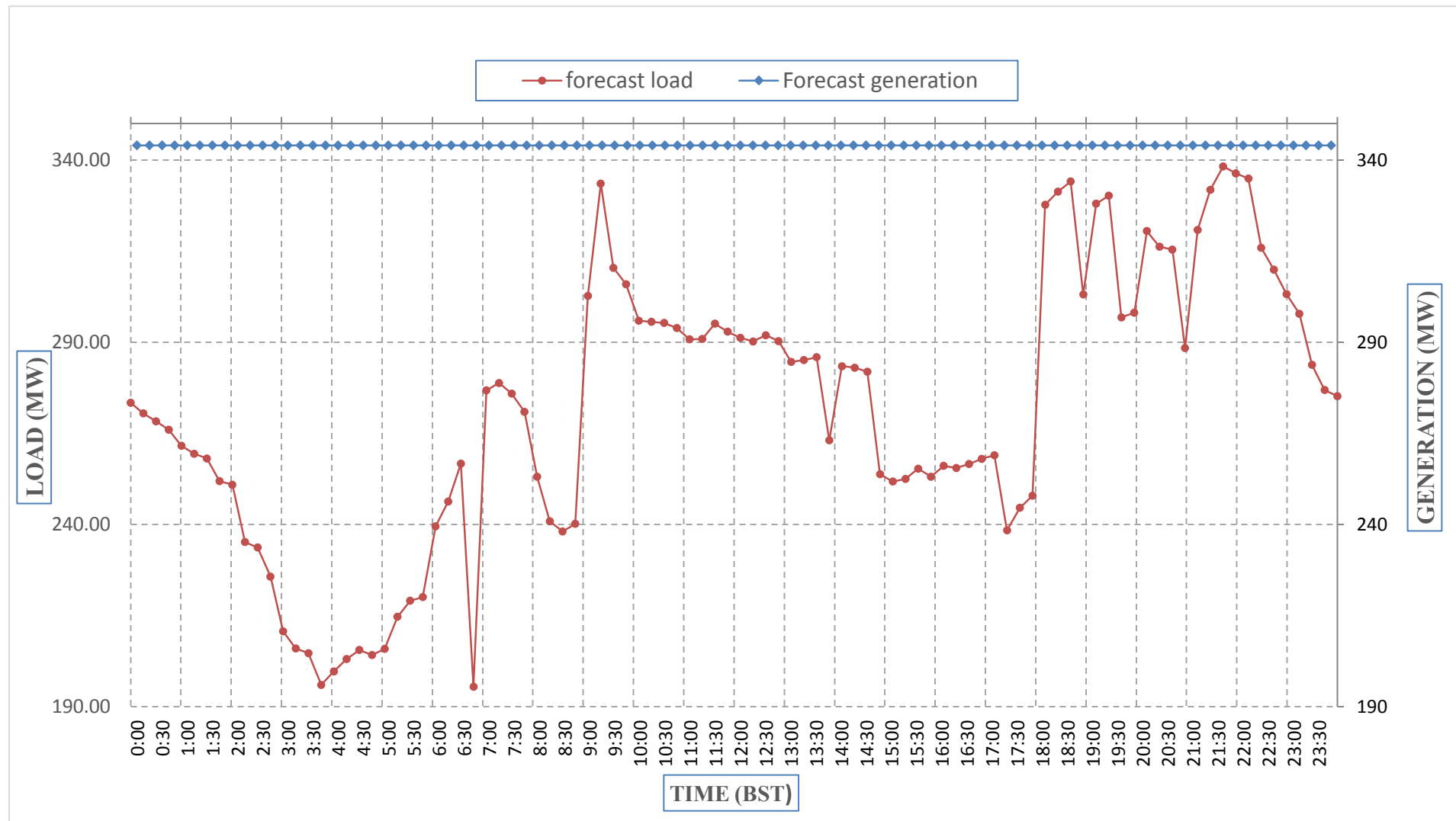
Yours faithfully,
 Tshering Deki



Message No.: Enter your message number
From: Shift In-charge, Control Room

Date: 2-Jan-18
Time: 12:09

Scheduled Generation & Load Forecast for Tomorrow (03-Jan-2018).



Yours faithfully,
 Tshering Deki

	MW
Scheduled Peak Generation(03-Jan-2018).	344.00
Forecast Peak Load(03-Jan-2018).	338.20



འབྲུག་རྒྱལ་ཁོ་ལས་འཛིན།
Bhutan Power Corporation Ltd.
Bhutan Power System Operator
 Thimphu: Bhutan



Message No.: Enter your message number **Date:** 2-Jan-18
From: Shift In-charge, Control Room **Time:** 12:09

To
 Managing Director, BPC. Email: gemtshering@bpc.bt
 Director, O&MD, DGPC. Email: director.omd@drukgreen.com
 General Manager, TD, BPC. Email: ktobgye@bpc.bt
 Advisor, BPC. Email: bharattamang@bpc.bt

Sub: Scheduled Generation and Actual Generation of Dagachhu (01-Jan-2018).

Hours (BST)	Forecast Generation	Actual Generation	Hours (BST)	Forecast Generation	Actual Generation
0:00	24.5	24.29	12:00	24.5	23.99
0:15	24.5	24.29	12:15	24.5	24.02
0:30	24.5	24.30	12:30	24.5	24.00
0:45	24.5	24.29	12:45	24.5	24.01
1:00	24.5	24.29	13:00	24.5	24.02
1:15	24.5	24.32	13:15	24.5	24.00
1:30	24.5	24.29	13:30	24.5	24.01
1:45	24.5	24.29	13:45	24.5	22.52
2:00	24.5	24.30	14:00	24.5	24.02
2:15	24.5	24.30	14:15	24.5	24.50
2:30	24.5	24.30	14:30	24.5	24.50
2:45	24.5	24.28	14:45	24.5	24.52
3:00	24.5	24.29	15:00	24.5	24.51
3:15	24.5	24.28	15:15	24.5	24.52
3:30	24.5	24.30	15:30	24.5	24.51
3:45	24.5	24.30	15:45	24.5	24.51
4:00	24.5	24.32	16:00	24.5	24.49
4:15	24.5	24.32	16:15	24.5	24.52
4:30	24.5	24.30	16:30	24.5	24.54
4:45	24.5	24.29	16:45	24.5	24.52
5:00	24.5	24.29	17:00	24.5	24.52
5:15	24.5	24.29	17:15	24.5	24.51
5:30	24.5	24.31	17:30	24.5	24.51
6:45	24.5	24.30	17:45	24.5	24.51
6:00	24.5	24.28	18:00	24.5	24.51
6:15	24.5	24.30	18:15	24.5	24.50
6:30	24.5	24.29	18:30	24.5	24.53
6:45	24.5	24.31	18:45	24.5	24.51
7:00	24.5	24.31	19:00	24.5	24.51
7:15	24.5	24.29	19:15	24.5	24.51
7:30	24.5	24.30	19:30	24.5	24.52
7:45	24.5	24.29	19:45	24.5	24.51
8:00	24.5	24.62	20:00	24.5	24.51
8:15	24.5	24.61	20:15	24.5	24.52
8:30	24.5	24.60	20:30	24.5	24.50
8:45	24.5	24.60	20:45	24.5	24.51
9:00	24.5	26.92	21:00	24.5	24.51
9:15	24.5	26.91	21:15	24.5	24.52
9:30	24.5	24.49	21:30	24.5	24.52
9:45	24.5	24.48	21:45	24.5	24.03
10:00	24.5	24.50	22:00	24.5	24.04
10:15	24.5	24.50	22:15	24.5	24.02
10:30	24.5	23.99	22:30	24.5	24.01
10:45	24.5	24.00	22:45	24.5	23.99
11:00	24.5	24.00	23:00	24.5	23.99
11:15	24.5	23.99	23:15	24.5	24.02
11:30	24.5	23.99	23:30	24.5	24.02
11:45	24.5	24.00	23:45	24.5	24.00

Yours faithfully,
 Tshering Deki



འབྲུག་གྲོག་མེ་ལས་འཛིན།

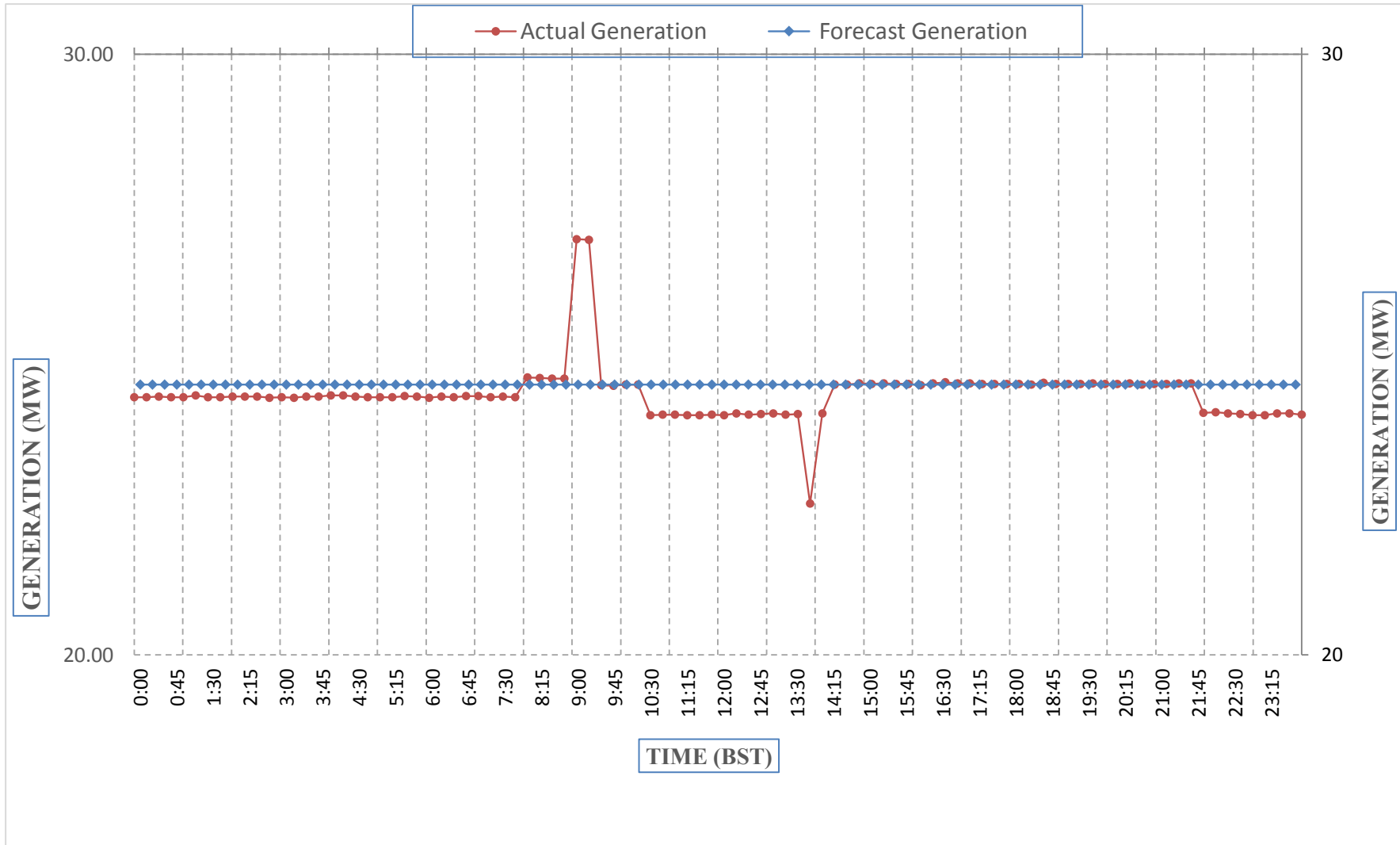
Bhutan Power Corporation Ltd.
Bhutan Power System Operator
Thimphu: Bhutan



Message No.: Enter your message number
From: Shift In-charge, Control Room

Date: 2-Jan-18
Time: 12:09

Scheduled Generation & Actual Generation of Dagachhu(01-Jan-2018).



Yours faithfully,
Tshering Deki