



འབྲུག་རྒྱལ་ཁོ་སྲིད་ལྷན་ཁག་།

Bhutan Power Corporation Ltd.
Bhutan Power System Operator
Thimphu: Bhutan



Message No.: Enter your message number
From: Shift In-charge, Control Room

Date: 1-Jan-18
Time: 12:09

To
Managing Director, BPC. Email: gemtshering@bpc.bt
Director, O&MD, DGPC. Email: director.omb@drukgreen.com
General Manager, TD, BPC. Email: ktobgye@bpc.bt
General Manager, DCSD, BPC. Email: sandeeprai@bpc.bt

Sub: **Load Generation Balance Report of Yesterday (31-Dec-2017).**

Hours (BST)	Forecast		Actual		Hours (BST)	Forecast		Actual	
	Generation	Load	Generation	Load		Generation	Load	Generation	Load
0:00	364.3	290.3	385.70	251.98	12:00	368.3	298.4	345.52	282.28
0:15	368.3	286.9	384.12	250.61	12:15	368.3	300.7	348.96	282.05
0:30	368.3	283.9	384.23	250.48	12:30	368.3	298.9	348.91	281.23
0:45	368.3	281.9	384.23	251.24	12:45	368.3	296.8	348.94	281.06
1:00	368.3	281.3	385.84	246.55	13:00	368.3	293.9	350.72	277.16
1:15	368.3	280	383.24	245.94	13:15	368.3	293	349.98	276.59
1:30	368.3	280	383.16	245.34	13:30	368.3	290.1	349.99	278.29
1:45	368.3	276.5	383.20	246.06	13:45	368.3	287.8	349.97	277.77
2:00	368.3	278.1	385.76	249.18	14:00	368.3	288.6	346.34	277.90
2:15	368.3	276.6	383.98	246.44	14:15	368.3	287.1	347.49	277.49
2:30	368.3	278.4	384.03	245.56	14:30	368.3	287.1	347.46	278.70
2:45	368.3	277.3	384.05	245.24	14:45	368.3	288.9	22.38	25.54
3:00	368.3	276	384.41	241.36	15:00	368.3	286.9	22.38	24.87
3:15	368.3	275	382.98	243.52	15:15	368.3	286.5	22.40	23.77
3:30	368.3	274.9	383.03	243.09	15:30	368.3	287.4	22.36	22.75
3:45	368.3	272.8	383.01	244.44	15:45	368.3	284.5	22.38	21.78
4:00	368.3	273.4	360.70	245.90	16:00	368.3	286	22.39	21.30
4:15	368.3	274.2	360.66	238.39	16:15	368.3	288	22.37	23.35
4:30	368.3	276	360.73	238.79	16:30	368.3	288.5	22.35	24.66
4:45	368.3	278.3	360.70	239.02	16:45	368.3	289.6	22.41	25.57
5:00	368.3	276.6	360.86	248.45	17:00	368.3	293.1	22.41	25.26
5:15	368.3	278.8	359.67	246.78	17:15	368.3	299.6	23.91	27.20
5:30	368.3	280.5	359.63	246.86	17:30	368.3	306.6	23.91	27.18
5:45	368.3	281.2	359.68	249.22	17:45	368.3	314.8	23.92	28.39
6:00	368.3	284.1	363.27	255.38	18:00	368.3	319.8	391.76	335.13
6:15	368.3	286.4	361.07	257.32	18:15	368.3	319.1	392.17	337.01
6:30	368.3	296.7	361.09	258.55	18:30	368.3	320.6	393.37	337.05
6:45	368.3	302.1	22.30	18.66	18:45	368.3	320.6	392.49	332.15
7:00	368.3	301.1	350.88	273.16	19:00	368.3	320.2	392.12	338.64
7:15	368.3	307.9	348.99	273.84	19:15	368.3	320.9	390.30	342.63
7:30	368.3	308.8	349.13	274.66	19:30	368.3	317.2	393.05	329.28
7:45	368.3	310.3	349.05	273.43	19:45	368.3	315.7	392.34	324.10
8:00	368.3	309	350.45	287.17	20:00	368.3	310.8	391.37	321.37
8:15	368.3	313.4	349.82	288.73	20:15	368.3	310.6	387.59	318.53
8:30	368.3	310.6	349.75	286.09	20:30	368.3	311.5	386.09	312.80
8:45	368.3	310.2	349.73	284.54	20:45	368.3	307.9	386.30	304.88
9:00	368.3	309.6	350.59	285.26	21:00	368.3	304.3	386.27	304.76
9:15	368.3	324.1	350.48	283.04	21:15	368.3	307.6	377.95	306.96
9:30	368.3	301.7	350.42	284.98	21:30	368.3	317.7	377.95	300.46
9:45	368.3	298.6	350.48	283.87	21:45	368.3	321	373.64	290.68
10:00	368.3	297.2	339.13	277.13	22:00	368.3	320.3	375.14	290.04
10:15	368.3	296.3	341.41	282.17	22:15	368.3	327.9	373.02	284.34
10:30	368.3	293.8	341.52	282.94	22:30	368.3	325.1	369.16	287.70
10:45	368.3	294.8	341.51	283.02	22:45	368.3	316.6	374.93	285.59
11:00	368.3	300.8	342.98	279.41	23:00	368.3	323.2	375.23	276.33
11:15	368.3	300.5	341.52	278.19	23:15	368.3	303.2	374.49	269.20
11:30	368.3	302.8	341.56	284.01	23:30	368.3	293.7	372.93	267.45
11:45	368.3	299.7	341.56	281.06	23:45	368.3	290.3	374.52	267.41

Yours faithfully
Tshering Yangzom

Coincidental peak load of Day(Last year):	
295.67	31-Dec-16
Maximum Load till date:	
362.09	14-Nov-17



འབྲུག་གློག་ལེ་ལས་འཛིན།

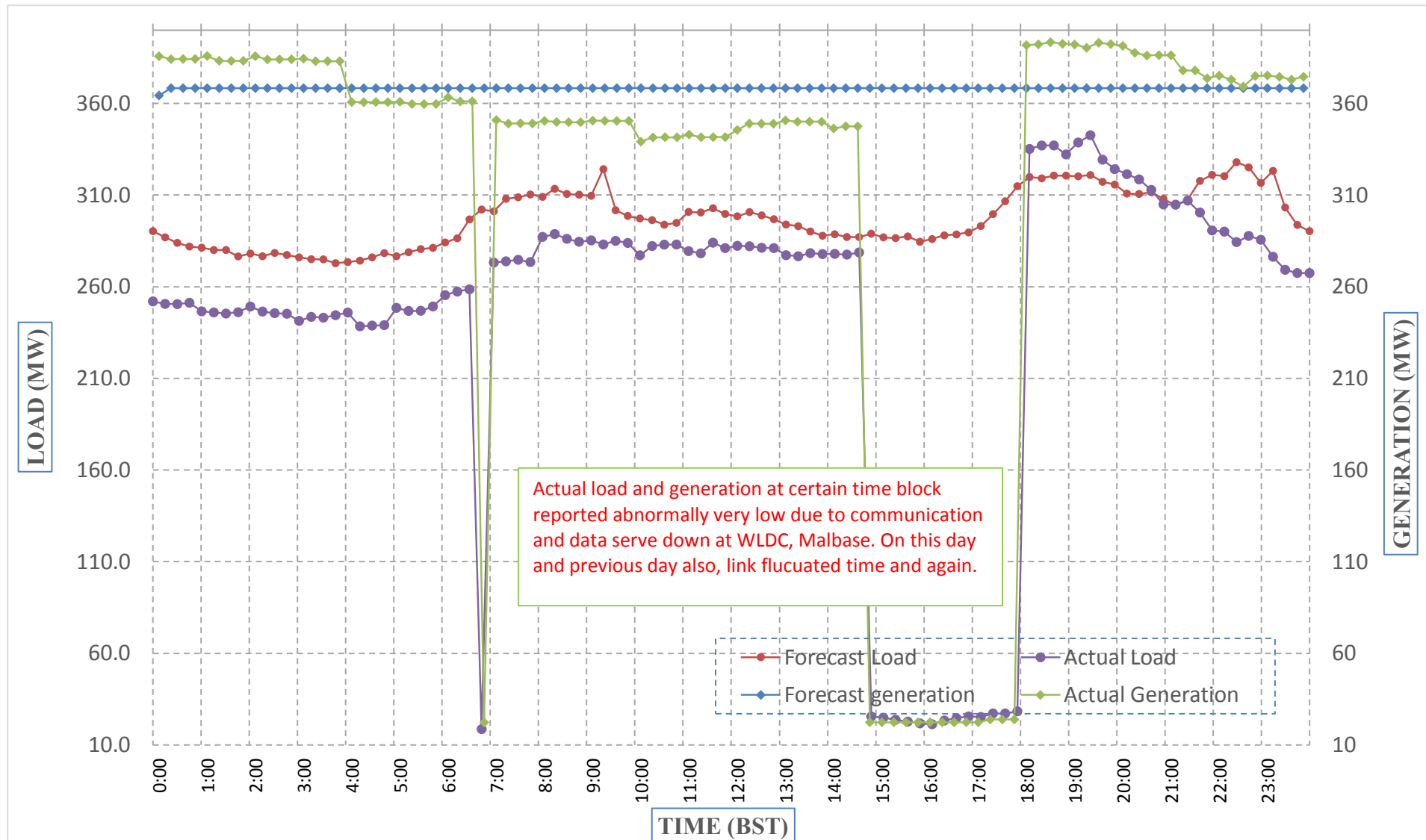
Bhutan Power Corporation Ltd.
 Bhutan Power System Operator
 Thimphu: Bhutan



Message No.: Enter your message number
 From: Shift In-charge, Control Room

Date: 1-Jan-18
 Time: 12:09

Forecast Generation & Load with Actual Generation & Load (31-Dec-2017).



Yours faithfully,
 Tshering Yangzom

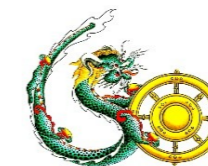
	MW	Coincidental peak load of Day(Last year):	
Peak Co-incident Generation(31-Dec-2017).	393.37	295.67	31-Dec-16
Peak Co-incident Load(31-Dec-2017).	342.63		
		Maximum Load till date:	
		362.09	14-Nov-17

Telephone: +975-02335631; Fax: +975-02335632; Email: bhutansystemoperator@bpc.bt; www.bpc.bt



འབྲུག་གློག་ལེ་ལས་འཛིན།

Bhutan Power Corporation Ltd.
Bhutan Power System Operator
Thimphu: Bhutan



Message No.: Enter your message number
From: Shift In-charge, Control Room

Date: 1-Jan-18
Time: 12:09

To

Managing Director, BPC. Email: gemtshering@bpc.bt
Director, O&MD, DGPC. Email: director.omid@drukgreen.com
General Manager, TD, BPC. Email: thinleygyeltshen@bpc.bt
General Manager, DCSD, BPC. Email: sandeeprai@bpc.bt

Sub: Load Generation Balance Report of Today (01-Jan-2018).

Hours (BST)	Forecast		Actual	
	Generation	Load	Generation	Load
0:00	285.5	346.9	261.6	373.8
0:15	281	346.9	258.8	372.7
0:30	278.2	346.9	259.5	344.6
0:45	274.9	346.9	255.3	342.9
1:00	272.3	346.9	250.2	342.4
1:15	273	346.9	255.9	343.4
1:30	273	346.9	254.5	342.4
1:45	266.1	346.9	253.9	344.1
2:00	270.2	346.9	243.9	342.2
2:15	267.9	346.9	246.1	342.1
2:30	270.3	346.9	248.1	323.3
2:45	268.6	346.9	247.9	323.4
3:00	268	346.9	248.6	325.6
3:15	265.7	346.9	247.0	331.3
3:30	267.4	346.9	248.9	332.9
3:45	264.5	346.9	236.0	334.0
4:00	266.9	346.9	248.6	334.7
4:15	267.9	346.9	250.8	333.1
4:30	269.2	346.9	249.3	335.5
4:45	271.2	346.9	239.0	334.5
5:00	271.4	346.9	244.4	335.0
5:15	273.6	346.9	251.0	329.5
5:30	276.8	346.9	257.3	330.7
5:45	277.9	346.9	256.8	329.6
6:00	281	346.9	260.1	328.7
6:15	284.7	346.9	264.0	331.4
6:30	294.3	346.9	266.7	330.7
6:45	298	346.9	259.5	329.6
7:00	306.6	346.9	266.8	330.5
7:15	312.2	346.9	288.5	330.5
7:30	313.5	346.9	294.4	330.6
7:45	314.2	346.9	301.3	331.0
8:00	314.2	346.9	303.6	329.6
8:15	318.1	346.9	297.6	332.0
8:30	316.9	346.9	305.1	332.5
8:45	309.3	346.9	302.3	335.1
9:00	312.2	346.9	303.0	337.5

Coincidental peak load of Day(Last year):	
299.05	1-Jan-18
Maximum Load till date:	
362.09	14-Nov-17

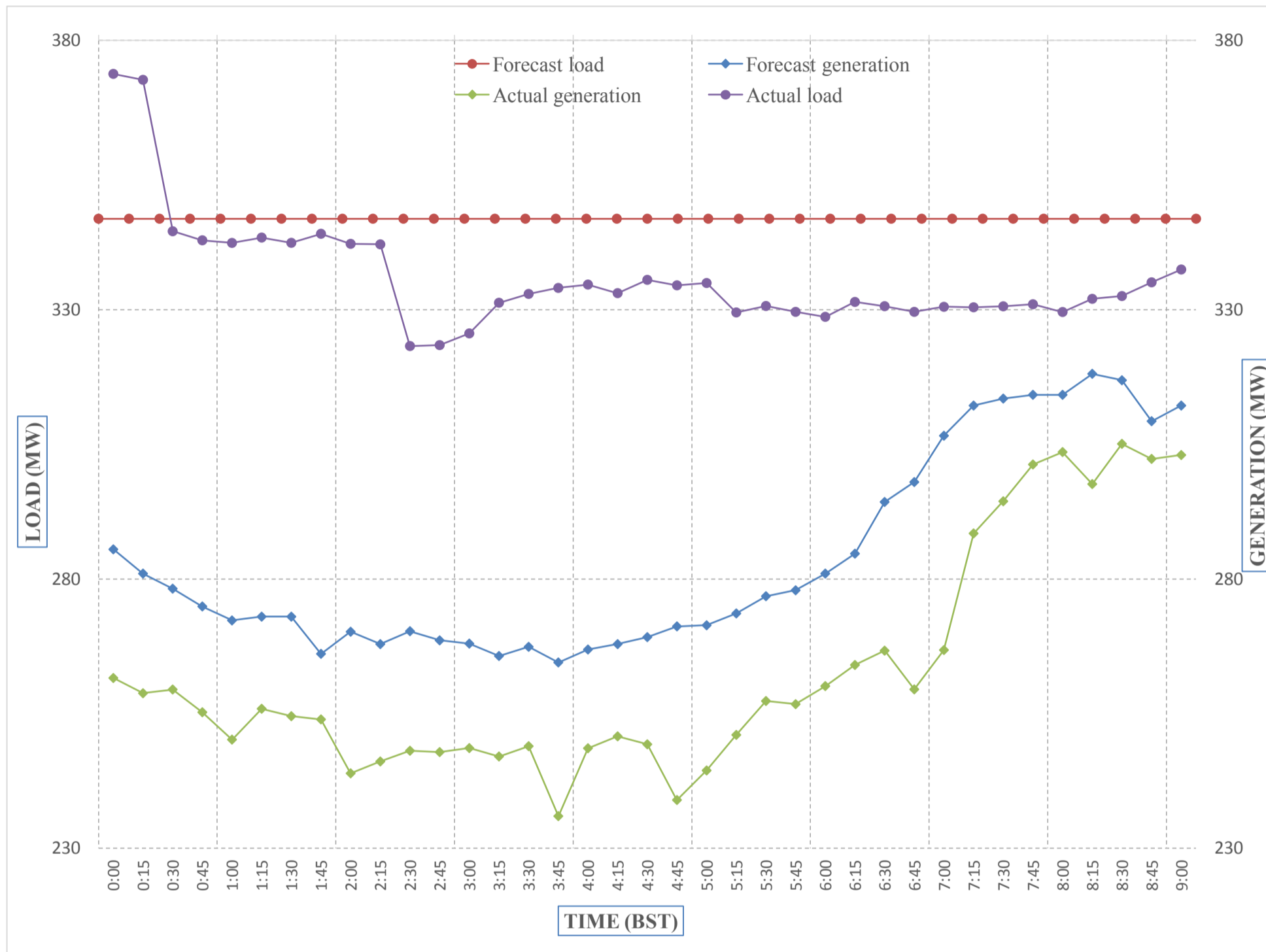
Yours faithfully,
Tshering Yangzom



Message No.: Enter your message number
 From: Shift In-charge, Control Room

Date: 1-Jan-18
 Time: 12:09

Forecast Generation & Load with Actual Generation & Load of Today from 00:00hrs to 09:00hrs(01-Jan-2018).



Yours faithfully
 Tshering Yangzom



འབྲུག་གི་འོ་ལྷན་ཁང་།
Bhutan Power Corporation Ltd.
Bhutan Power System Operator
 Thimphu: Bhutan



Message No.: Enter your message number **Date:** 1-Jan-18
From: Shift In-charge, Control Room **Time:** 12:09

To
 Managing Director, BPC. Email: gemtshering@bpc.bt
 Director, O&MD, DGPC. Email: director.umd@drukgreen.com
 General Manager, TD, BPC. Email: ktobgye@bpc.bt
 Advisor, BPC. Email: bharattamang@bpc.bt

Sub: **Load Generation Balance Report of Tomorrow (02-Jan-2018).**

Hours (BST)	Forecast		Hours (BST)	Forecast	
	Generation	Load		Generation	Load
0:00	276.6	335.9	12:00	291.7	335.9
0:15	273.5	335.9	12:15	294.2	335.9
0:30	271	335.9	12:30	292.4	335.9
0:45	268.7	335.9	12:45	290.9	335.9
1:00	264.6	335.9	13:00	286.7	335.9
1:15	265.5	335.9	13:15	285.4	335.9
1:30	265.5	335.9	13:30	283.6	335.9
1:45	260.3	335.9	13:45	253.1	335.9
2:00	264.1	335.9	14:00	281.3	335.9
2:15	261.9	335.9	14:15	281.1	335.9
2:30	263.4	335.9	14:30	281.4	335.9
2:45	262.2	335.9	14:45	243.9	335.9
3:00	260.7	335.9	15:00	242.7	335.9
3:15	259.6	335.9	15:15	242	335.9
3:30	261.1	335.9	15:30	242.5	335.9
3:45	259.1	335.9	15:45	241.5	335.9
4:00	255	335.9	16:00	243.4	335.9
4:15	253.7	335.9	16:15	245.4	335.9
4:30	254	335.9	16:30	246.5	335.9
4:45	253.5	335.9	16:45	247.5	335.9
5:00	256.1	335.9	17:00	251.6	335.9
5:15	256.7	335.9	17:15	218.4	335.9
5:30	258.6	335.9	17:30	222.6	335.9
6:45	259.3	335.9	17:45	227.7	335.9
6:00	242.6	335.9	18:00	330.5	335.9
6:15	248	335.9	18:15	329.4	335.9
6:30	250.3	335.9	18:30	331.2	335.9
6:45	254.1	335.9	18:45	290.4	335.9
7:00	245.8	335.9	19:00	326.4	335.9
7:15	249.1	335.9	19:15	328.1	335.9
7:30	251.2	335.9	19:30	286.8	335.9
7:45	254.6	335.9	19:45	284.4	335.9
8:00	278.2	335.9	20:00	316.3	335.9
8:15	293.6	335.9	20:15	315.6	335.9
8:30	292.9	335.9	20:30	313.8	335.9
8:45	293.2	335.9	20:45	276	335.9
9:00	303.3	335.9	21:00	311.4	335.9
9:15	323.2	335.9	21:15	323.6	335.9
9:30	310.4	335.9	21:30	332.6	335.9
9:45	307.4	335.9	21:45	333.1	335.9
10:00	294	335.9	22:00	333.3	335.9
10:15	293.5	335.9	22:15	326.5	335.9
10:30	291.9	335.9	22:30	321.1	335.9
10:45	293	335.9	22:45	312	335.9
11:00	293.7	335.9	23:00	305.6	335.9
11:15	294.5	335.9	23:15	288.7	335.9
11:30	297	335.9	23:30	280.7	335.9
11:45	294.9	335.9	23:45	277.5	335.9

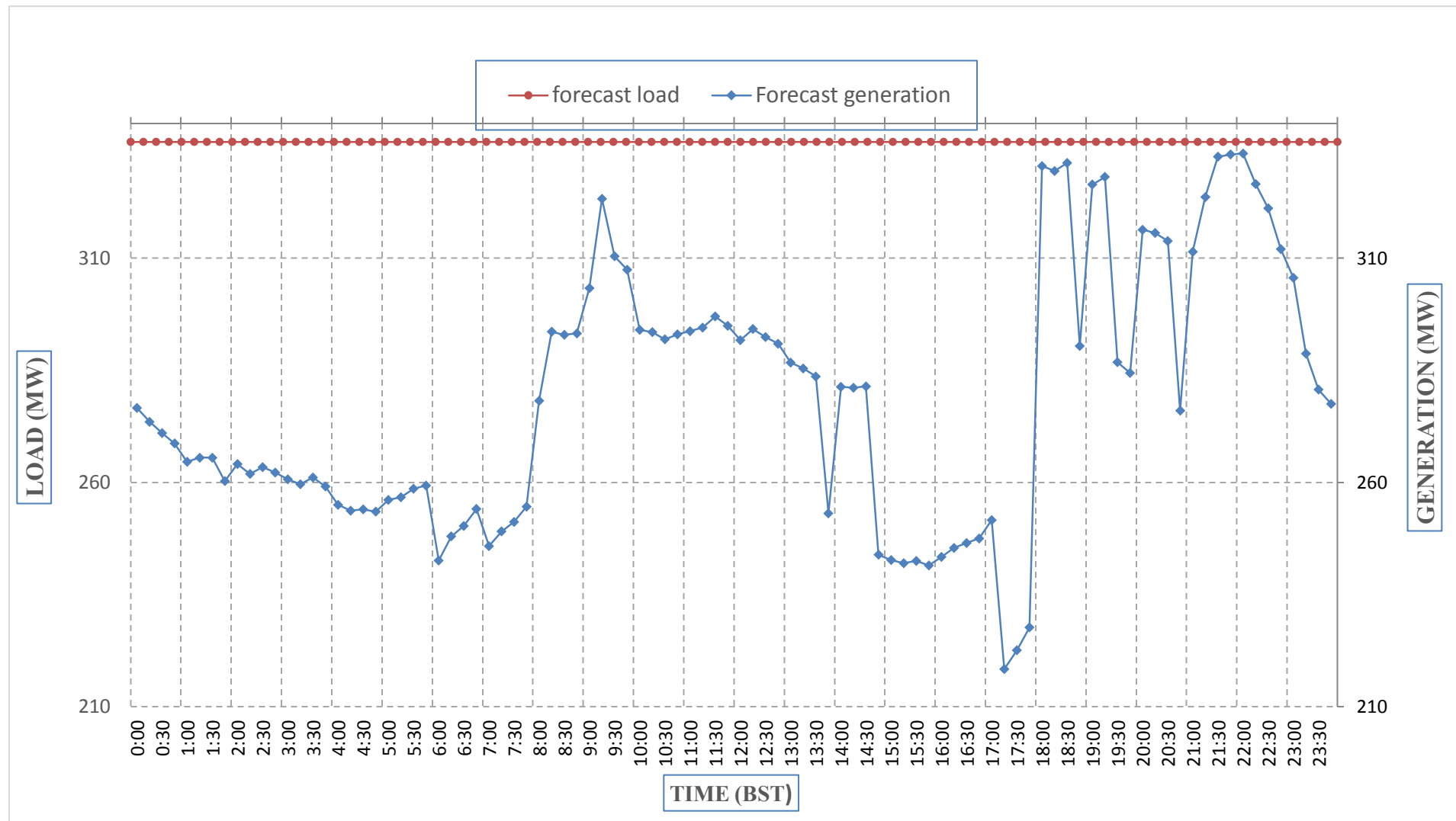
Yours faithfully,
 Tshering Yangzom



Message No.: Enter your message number
From: Shift In-charge, Control Room

Date: 1-Jan-18
Time: 12:09

Scheduled Generation & Load Forecast for Tomorrow (02-Jan-2018).



Yours faithfully,
 Tshering Yangzom

	MW
Scheduled Peak Generation(02-Jan-2018).	333.30
Forecast Peak Load(02-Jan-2018).	335.90



འབྲུག་གྲོག་ལེ་ལས་འཛིན།
Bhutan Power Corporation Ltd.
Bhutan Power System Operator
Thimphu: Bhutan



Message No.: Enter your message number **Date:** 1-Jan-18
From: Shift In-charge, Control Room **Time:** 12:09

To
 Managing Director, BPC. Email: gemtshering@bpc.bt
 Director, O&MD, DGPC. Email: director.umd@drukgreen.com
 General Manager, TD, BPC. Email: ktobgye@bpc.bt
 Advisor, BPC. Email: bharamtamang@bpc.bt

Sub: Scheduled Generation and Actual Generation of Dagachhu (31-Dec-2017).

Hours (BST)	Forecast Generation	Actual Generation	Hours (BST)	Forecast Generation	Actual Generation
0:00	25	24.10986328	12:00	25	24.27978516
0:15	25	24.31591797	12:15	25	24.27197266
0:30	25	24.31591797	12:30	25	24.27197266
0:45	25	24.31591797	12:45	25	24.27197266
1:00	25	24.32373047	13:00	25	24.26171875
1:15	25	24.30859375	13:15	25	24.26953125
1:30	25	24.30859375	13:30	25	24.26953125
1:45	25	24.30859375	13:45	25	24.26953125
2:00	25	24.31591797	14:00	25	24.27392578
2:15	25	24.32275391	14:15	25	24.26464844
2:30	25	24.32275391	14:30	25	24.26464844
2:45	25	24.32275391	14:45	25	0
3:00	25	24.32568359	15:00	25	0
3:15	25	24.31152344	15:15	25	0
3:30	25	24.31152344	15:30	25	0
3:45	25	24.31152344	15:45	25	0
4:00	25	24.09375	16:00	25	0
4:15	25	24.10351563	16:15	25	0
4:30	25	24.10351563	16:30	25	0
4:45	25	24.10351563	16:45	25	0
5:00	25	24.10498047	17:00	25	0
5:15	25	24.10253906	17:15	25	0
5:30	25	24.10253906	17:30	25	0
6:45	25	24.10253906	17:45	25	0
6:00	25	24.09472656	18:00	25	24.25585938
6:15	25	24.09472656	18:15	25	24.23974609
6:30	25	24.09472656	18:30	25	24.2578125
6:45	25	0	18:45	25	24.26367188
7:00	25	24.09765625	19:00	25	24.25878906
7:15	25	24.09375	19:15	25	24.26660156
7:30	25	24.09375	19:30	25	24.27880859
7:45	25	24.09375	19:45	25	24.27490234
8:00	25	24.09375	20:00	25	24.27099609
8:15	25	24.09277344	20:15	25	24.27392578
8:30	25	24.09277344	20:30	25	24.27099609
8:45	25	24.09277344	20:45	25	24.26367188
9:00	25	24.08398438	21:00	25	24.27197266
9:15	25	24.09570313	21:15	25	24.27294922
9:30	25	24.09570313	21:30	25	24.2109375
9:45	25	24.09570313	21:45	25	24.24560547
10:00	25	24.20996094	22:00	25	24.04785156
10:15	25	24.25488281	22:15	25	21.75488281
10:30	25	24.25488281	22:30	25	19.79882813
10:45	25	24.25488281	22:45	25	24.27587891
11:00	25	24.27587891	23:00	25	24.28173828
11:15	25	24.27978516	23:15	25	24.03466797
11:30	25	24.27978516	23:30	25	24.06054688
11:45	25	24.27978516	23:45	25	24.046875

Yours faithfully,
 Tshering Yangzom



འབྲུག་གྲོག་མེ་ལས་འཛིན།

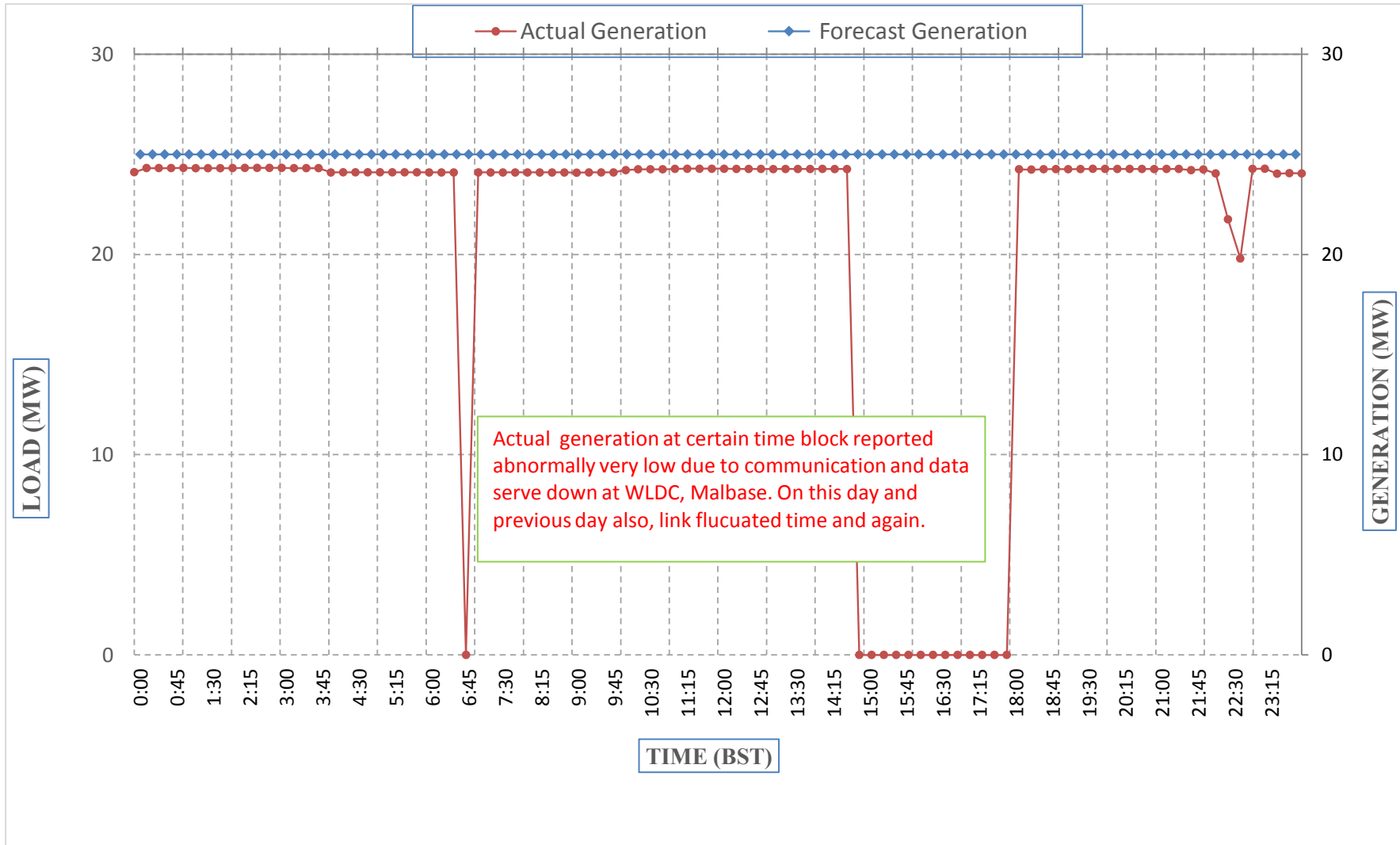
Bhutan Power Corporation Ltd.
Bhutan Power System Operator
Thimphu: Bhutan



Message No.: Enter your message number
From: Shift In-charge, Control Room

Date: 1-Jan-18
Time: 12:09

Scheduled Generation & Actual Generation of Dagachhu(31-Dec-2017).



Yours faithfully,
Tshering Yangzom