



འབྲུག་གླིང་མེ་ལམ་འཛིན།

Bhutan Power Corporation Ltd.
Bhutan Power System Operator
Thimphu: Bhutan



Message No.: Enter your message number
From: Shift In-charge, Control Room

Date: 25-Nov-17
Time: 10:52

To
Managing Director, BPC. Email: gemtshering@bpc.bt
Director, O&MD, DGPC. Email: director.omid@drukgreen.com
General Manager, TD, BPC. Email: ktobgye@bpc.bt
General Manager, DCSD, BPC. Email: sandeeprai@bpc.bt
General Manager, BPSO, BPC. Email: ujjwaldahal@bpc.bt

Sub: **Load Generation Balance Report of Yesterday (24-Nov-2017).**

Hours (BST)	Forecast		Actual		Hours (BST)	Forecast		Actual	
	Generation	Load	Generation	Load		Generation	Load	Generation	Load
0:00	549.2	262.4	540.0	263.1	12:00	549.2	287.4	534.09	284.12
0:15	549.2	262.4	537.5	263.0	12:15	549.2	285.6	532.14	280.71
0:30	549.2	261.6	539.6	256.0	12:30	549.2	287.2	534.30	276.53
0:45	549.2	268.5	539.6	257.0	12:45	549.2	281.4	532.78	276.79
1:00	549.2	274	536.6	259.9	13:00	549.2	279.2	530.89	268.05
1:15	549.2	274.4	539.2	254.3	13:15	549.2	275.7	532.81	270.71
1:30	549.2	274.9	529.5	257.7	13:30	549.2	272.7	531.31	273.24
1:45	549.2	271	528.4	259.9	13:45	549.2	273.9	527.27	268.52
2:00	549.2	278.5	525.4	255.0	14:00	549.2	271.3	523.28	258.81
2:15	549.2	273.4	515.0	260.0	14:15	549.2	274.1	542.89	267.42
2:30	549.2	269.2	517.8	252.9	14:30	549.2	272.2	542.22	266.80
2:45	549.2	258.6	518.7	251.7	14:45	549.2	271.5	544.59	272.79
3:00	549.2	263.7	516.5	252.4	15:00	549.2	272.3	542.48	268.57
3:15	549.2	249.7	519.7	249.9	15:15	549.2	272.9	542.75	278.17
3:30	549.2	249.1	519.2	244.4	15:30	549.2	275.6	542.80	282.77
3:45	549.2	234	518.6	244.6	15:45	549.2	277.9	544.20	296.59
4:00	549.2	218.9	516.6	239.7	16:00	549.2	279.5	544.02	301.80
4:15	549.2	212.6	518.4	246.5	16:15	549.2	281.2	541.89	313.98
4:30	549.2	213.4	518.0	247.2	16:30	549.2	290.9	545.13	335.90
4:45	549.2	213.4	520.2	250.7	16:45	549.2	291.9	544.16	337.09
5:00	549.2	216.2	515.4	250.1	17:00	549.2	301.3	540.19	344.19
5:15	549.2	227.4	517.4	253.1	17:15	549.2	308.6	542.53	337.75
5:30	549.2	237.8	519.2	253.7	17:30	549.2	319.9	543.36	336.24
6:45	549.2	253.4	516.5	260.6	17:45	549.2	334.1	545.30	331.23
6:00	549.2	280.7	523.0	264.8	18:00	549.2	338.3	543.66	327.88
6:15	549.2	296.4	524.8	269.1	18:15	549.2	344.2	542.31	329.55
6:30	549.2	309.1	524.9	288.1	18:30	549.2	341.3	544.08	326.62
6:45	549.2	320.3	528.2	296.0	18:45	549.2	340.6	541.59	326.06
7:00	549.2	334.8	529.1	312.0	19:00	549.2	336.6	544.31	323.95
7:15	549.2	326	530.4	316.1	19:15	549.2	335.4	546.70	318.30
7:30	549.2	325.5	530.5	321.9	19:30	549.2	331.9	546.64	315.73
7:45	549.2	274.5	529.3	320.9	19:45	549.2	325.7	543.41	305.42
8:00	549.2	256.8	530.0	313.4	20:00	549.2	324	543.52	300.09
8:15	549.2	250.6	530.7	311.8	20:15	549.2	322.1	546.42	286.68
8:30	549.2	304.5	530.9	288.9	20:30	549.2	318.5	547.02	282.93
8:45	549.2	299.3	530.6	294.8	20:45	549.2	316.1	544.77	275.29
9:00	549.2	301.2	533.5	299.3	21:00	549.2	309.6	544.42	265.92
9:15	549.2	300.7	533.53	291.94	21:15	549.2	308.4	546.50	267.57
9:30	549.2	297.3	530.16	295.77	21:30	549.2	298.1	543.66	266.58
9:45	549.2	292.8	533.55	294.92	21:45	549.2	293.1	543.61	264.91
10:00	549.2	289.5	531.05	296.65	22:00	549.2	287.9	547.03	266.03
10:15	549.2	287.8	531.92	294.95	22:15	549.2	281.4	546.59	265.98
10:30	549.2	288.9	533.72	294.52	22:30	549.2	279.1	540.69	284.45
10:45	549.2	287.2	531.92	294.59	22:45	549.2	275	540.16	279.75
11:00	549.2	287.4	631.70	299.48	23:00	549.2	273.2	542.16	280.58
11:15	549.2	284.2	532.41	299.51	23:15	549.2	270.2	539.86	278.00
11:30	549.2	288.8	532.47	292.54	23:30	549.2	267.3	538.67	272.88
11:45	549.2	287.6	533.63	293.54	23:45	549.2	265.4	542.67	270.23

Yours faithfully
Jamyangla

Coincidental peak load of Day(Last year):	
287.26	24-Nov-16
Maximum Load till date:	
362.09	14-Nov-17



འབྲུག་གྲོག་མོ་ལས་འཛིན།

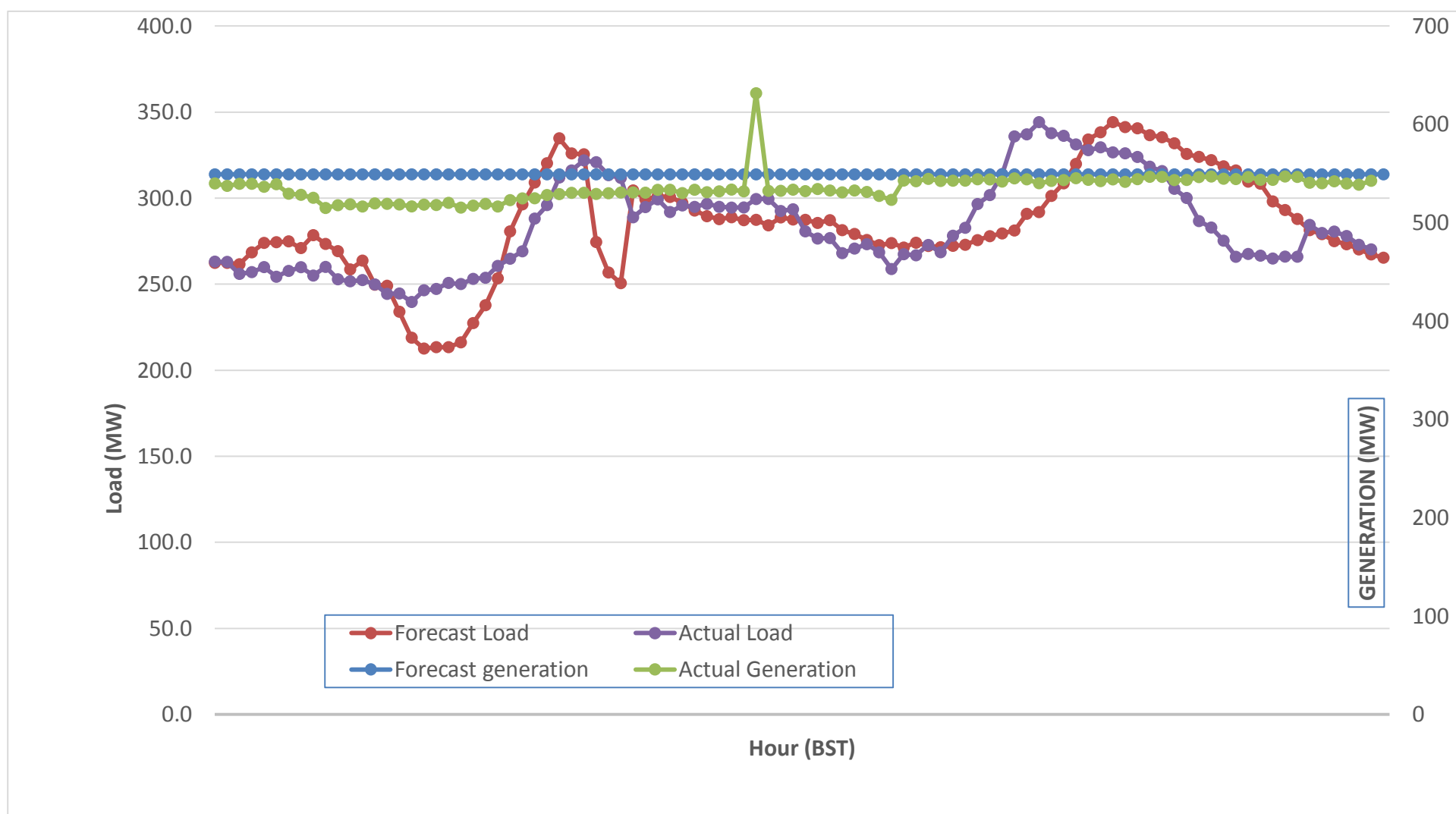
Bhutan Power Corporation Ltd.
 Bhutan Power System Operator
 Thimphu: Bhutan



Message No.: Enter your message number
 From: Shift In-charge, Control Room

Date: 25-Nov-17
 Time: 10:52

Forecast Generation & Load with Actual Generation & Load (24-Nov-2017).



Yours faithfully,
 Jamyangla

	MW	Coincidental peak load of Day(Last year):	
Peak Co-incident Generation(24-Nov-2017).	631.70	287.26	24-Nov-16
Peak Co-incident Load(24-Nov-2017).	344.19		
		Maximum Load till date:	
		362.09	14-Nov-17

Telephone: +975-02335631; Fax: +975-02335632; Email: bhutansystemoperator@bpc.bt; www.bpc.bt



Bhutan Power Corporation Ltd.
Bhutan Power System Operator
Thimphu: Bhutan

ལྷན་ རྒྱལ་གྱི་ལས་འཛིན།



Message No.: Enter your message number
From: Shift In-charge, Control Room

Date: 25-Nov-17
Time: 10:52

To
 Managing Director, BPC. Email: gemtshering@bpc.bt
 Director, O&MD, DGPC. Email: director.omid@drukgreen.com
 General Manager, TD, BPC. Email: thinleygyeltshen@bpc.bt
 General Manager, DCSD, BPC. Email: sandeprai@bpc.bt
 General Manager, BPSO, BPC. Email: ujjwaldahal@bpc.bt

Sub: Load Generation Balance Report of Today (25-Nov-2017).

Hours (BST)	Forecast		Actual	
	Generation	Load	Generation	Load
0:00	549.2	262.4	544.9	256.0
0:15	549.2	262.4	546.5	254.4
0:30	549.2	261.6	544.2	255.5
0:45	549.2	268.5	545.4	256.1
1:00	549.2	274	545.9	257.5
1:15	549.2	274.4	545.1	259.1
1:30	549.2	274.9	544.6	258.5
1:45	549.2	271	545.5	250.3
2:00	549.2	278.5	545.3	246.7
2:15	549.2	273.4	546.4	255.8
2:30	549.2	269.2	546.8	256.1
2:45	549.2	258.6	546.2	241.6
3:00	549.2	263.7	544.8	253.4
3:15	549.2	249.7	544.9	256.9
3:30	549.2	249.1	544.3	255.5
3:45	549.2	234	546.1	253.0
4:00	549.2	218.9	545.6	261.0
4:15	549.2	212.6	546.2	255.6
4:30	549.2	213.4	545.2	258.4
4:45	549.2	213.4	546.0	258.8
5:00	549.2	216.2	542.1	271.9
5:15	549.2	227.4	539.4	271.0
5:30	549.2	237.8	542.7	279.8
5:45	549.2	253.4	542.1	284.0
6:00	549.2	280.7	540.3	300.5
6:15	549.2	296.4	538.7	315.8
6:30	549.2	309.1	538.8	319.8
6:45	549.2	320.3	536.4	318.7
7:00	549.2	334.8	536.1	325.2
7:15	549.2	326	536.7	321.1
7:30	549.2	325.5	536.8	315.9
7:45	549.2	274.5	537.5	315.1
8:00	549.2	256.8	536.8	314.8
8:15	549.2	250.6	536.1	310.5
8:30	549.2	304.5	540.0	308.8
8:45	549.2	299.3	550.0	301.7
9:00	549.2	301.2	549.2	293.5

Coincidental peak load of Day(Last year):	
298.11	25-Nov-17

Maximum Load till date:	
362.09	14-Nov-17

Yours faithfully,
 Jamyangla

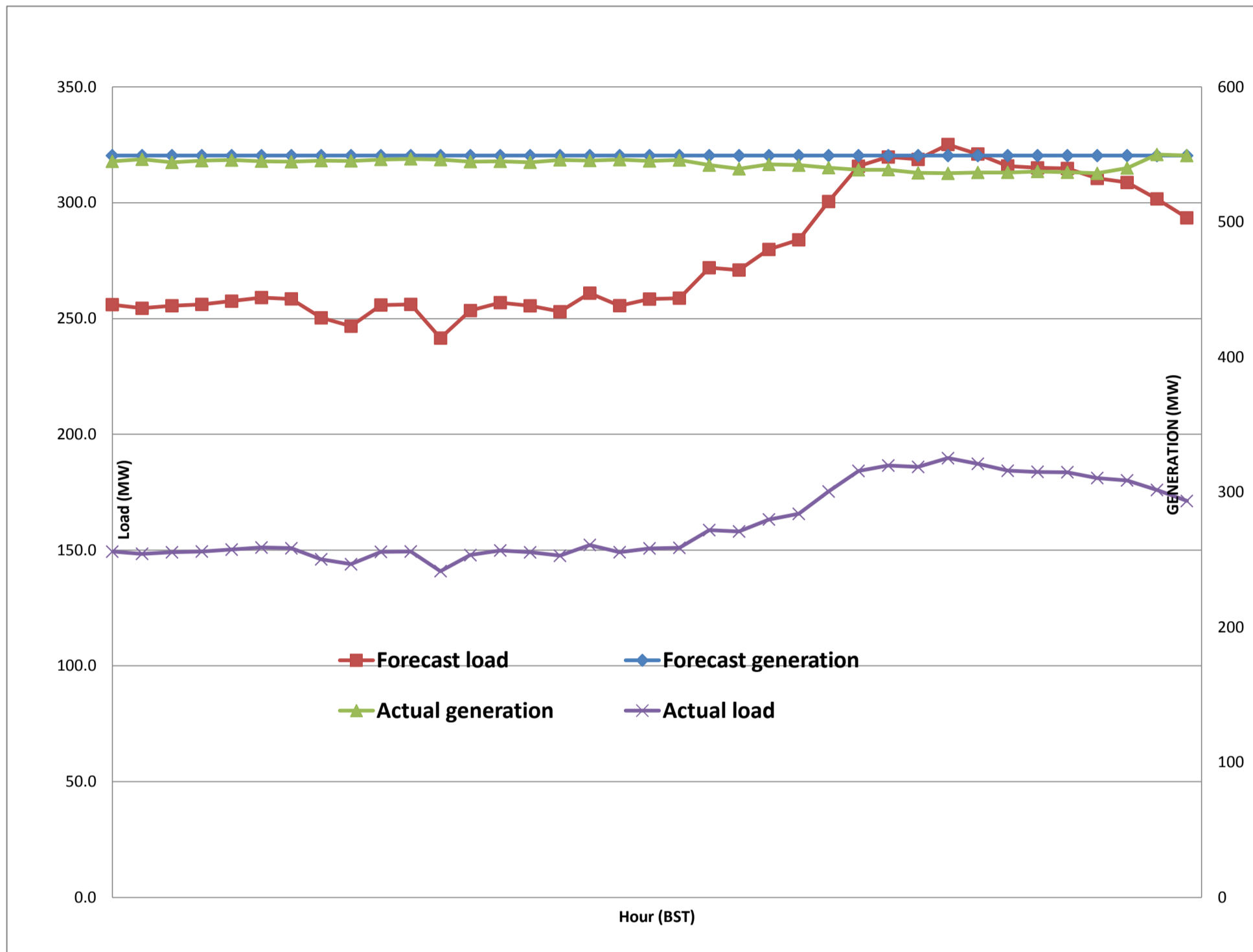
Telephone:



Message No.: Enter your message number
 From: Shift In-charge, Control Room

Date: 25-Nov-17
 Time: 10:52

Forecast Generation & Load with Actual Generation & Load of Today from 00:00hrs to 09:00hrs(25-Nov-2017).



Yours faithfully
 Jamyangla



འབྲུག་གྲོག་མེ་ལས་འཛིན།
Bhutan Power Corporation Ltd.
Bhutan Power System Operator
 Thimphu: Bhutan



Message No.: Enter your message number
From: Shift In-charge, Control Room
Date: 25-Nov-17
Time: 10:52

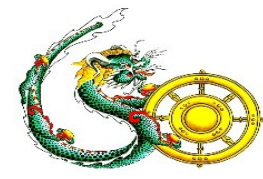
To

Managing Director, BPC. Email: gemtshering@bpc.bt
 Director, O&MD, DGPC. Email: director.umd@drukgreen.com
 General Manager, TD, BPC. Email: ktobgye@bpc.bt
 General Manager, BPSO, BPC. Email: ujjwaldahal@bpc.bt
 Advisor, BPC. Email: bharattamang@bpc.bt

Sub: Load Generation Balance Report of Tomorrow (26-Nov-2017).

Hours (BST)	Forecast		Hours (BST)	Forecast	
	Generation	Load		Generation	Load
0:00	515.1	256	4:48	514	285.1
0:15	515.1	256.3	2:24	514	285.6
0:30	515.1	253.9	0:00	514	286.6
0:45	515.1	257.4	7:12	514	282.3
1:00	515.1	260	16:48	514	278.8
1:15	515.1	259.5	0:00	514	276.6
1:30	515.1	262.3	2:24	514	273.4
1:45	515.1	259.9	4:48	514	272.1
2:00	515.1	264.2	4:48	514	269.2
2:15	515.1	263.5	19:12	514	271.7
2:30	515.1	264.6	21:36	514	271.3
2:45	515.1	264.6	4:48	514	269.4
3:00	515.1	266.6	16:48	514	269.5
3:15	515.1	269	2:24	514	270.2
3:30	515.1	269.5	14:24	514	272
3:45	515.1	265.9	9:36	514	276.4
4:00	515.1	262.6	7:12	514	275.8
4:15	515.1	261.8	19:12	514	279.6
4:30	515.1	266.6	12:00	514	286.4
4:45	515.1	265.7	16:48	514	288.1
5:00	515.1	260.8	7:12	514	298.2
5:15	515.1	260.2	9:36	515.1	305.4
5:30	515.1	237.9	4:48	515.1	320.8
6:45	515.1	227.7	9:36	515.1	332.5
6:00	515.1	229.5	4:48	515.1	338.8
6:15	515.1	237.5	21:36	515.1	341.9
6:30	515.1	245.5	14:24	515.1	338.4
6:45	515.1	251	7:12	515.1	337
7:00	515.1	258.6	21:36	515.1	334.2
7:15	515.1	265.1	7:12	515.1	331.1
7:30	515.1	272.7	19:12	515.1	328
7:45	515.1	301.1	21:36	515.1	322.8
8:00	515.1	313.4	16:48	515.1	323.1
8:15	515.1	320.6	21:36	515.1	321.6
8:30	515.1	312.2	0:00	515.1	317.7
8:45	515.1	298.3	9:36	515.1	314.1
9:00	514	298.5	19:12	515.1	308.9
9:15	514	300.1	2:24	515.1	305
9:30	514	295.2	12:00	515.1	293.7
9:45	514	290.7	16:48	515.1	288.3
10:00	514	289.2	16:48	515.1	281.9
10:15	514	286.4	0:00	515.1	276.8
10:30	514	289.7	7:12	515.1	272.1
10:45	514	285.4	2:24	513.5	267.5
11:00	514	289	16:48	513.5	265.5
11:15	514	286.4	9:36	513.5	264.2
11:30	514	285.9	14:24	513.5	262.6
11:45	514	284.4	4:48	513.5	258

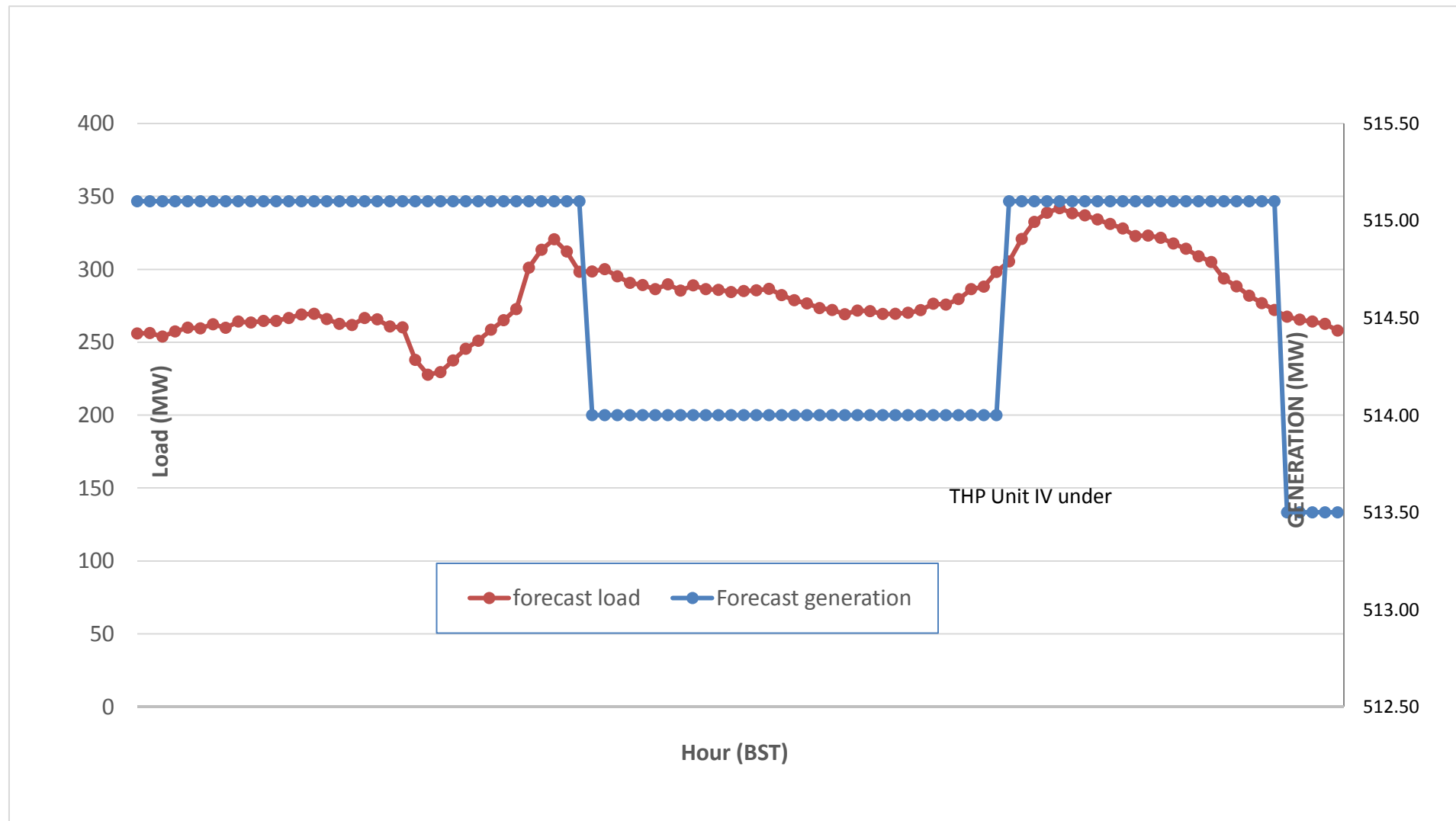
Yours faithfully,
 Jamyangla



Message No.: Enter your message number
 From: Shift In-charge, Control Room

Date: 25-Nov-17
 Time: 10:52

Scheduled Generation & Load Forecast for Tomorrow (26-Nov-2017).



Yours faithfully,
 Jamyangla

	MW
Scheduled Peak Generation(26-Nov-2017).	376.90
Forecast Peak Load(26-Nov-2017).	300.60