



འབྲུག་གླིང་གི་ལམ་འཛིན།

Bhutan Power Corporation Ltd.
Bhutan Power System Operator
Thimphu: Bhutan



Message No.: Enter your message number
From: Shift In-charge, Control Room
Date: 18-Nov-17
Time: 11:12

To
Managing Director, BPC. Email: gemtshering@bpc.bt
Director, O&MD, DGPC. Email: director.omb@drukgreen.com
General Manager, TD, BPC. Email: ktobgye@bpc.bt
General Manager, DCSD, BPC. Email: sandeeprai@bpc.bt
General Manager, BPSO, BPC. Email: ujjwaldahal@bpc.bt

Sub: **Load Generation Balance Report of Yesterday (17-Nov-2017).**

Hours (BST)	Forecast		Actual		Hours (BST)	Forecast		Actual	
	Generation	Load	Generation	Load		Generation	Load	Generation	Load
0:00	574.7	278.7	561.7	252.9	12:00	574.7	300.1	582.7	272.37
0:15	574.7	282.6	565.6	256.5	12:15	574.7	296.9	584.2	271.36
0:30	574.7	293.7	565.4	257.2	12:30	574.7	293.8	583.8	281.33
0:45	574.7	295.4	563.4	260.6	12:45	574.7	288.4	579.5	276.03
1:00	574.7	306.8	565.0	254.9	13:00	574.7	287.3	583.6	272.17
1:15	574.7	301.4	565.5	254.3	13:15	574.7	275.2	585.7	267.23
1:30	574.7	298.8	566.0	249.3	13:30	574.7	271.5	582.6	265.39
1:45	574.7	289.2	565.7	242.6	13:45	574.7	274.1	586.7	258.36
2:00	574.7	283.8	564.9	249.2	14:00	574.7	276	581.8	257.02
2:15	574.7	265.7	566.0	247.4	14:15	574.7	276.6	583.7	259.39
2:30	574.7	245.1	567.9	247.4	14:30	574.7	276.3	592.3	261.14
2:45	574.7	236	567.7	242.2	14:45	574.7	274.4	591.4	262.46
3:00	574.7	226.4	566.2	246.7	15:00	574.7	277.5	594.5	262.52
3:15	574.7	219.6	584.3	247.2	15:15	574.7	278	598.4	262.48
3:30	574.7	211.7	581.4	246.9	15:30	574.7	279.9	594.7	257.48
3:45	574.7	213.6	582.8	248.6	15:45	574.7	281.2	593.0	251.00
4:00	574.7	219.8	582.9	245.0	16:00	574.7	283.5	593.7	259.71
4:15	574.7	228.3	585.5	246.2	16:15	574.7	286.6	594.7	270.71
4:30	574.7	246.7	585.0	239.2	16:30	574.7	295.5	593.8	273.02
4:45	574.7	249.3	587.6	250.6	16:45	574.7	296.7	592.9	279.94
5:00	574.7	266.7	582.3	248.4	17:00	574.7	307.4	595.3	285.83
5:15	574.7	275.3	587.3	258.6	17:15	574.7	316.6	594.5	303.36
5:30	574.7	277.4	583.2	268.0	17:30	574.7	327.9	595.3	309.07
6:45	574.7	283.8	586.9	272.3	17:45	574.7	339.3	594.2	319.98
6:00	585.7	291.4	587.0	267.7	18:00	585.5	347	592.3	340.18
6:15	585.7	308	583.9	291.3	18:15	585.5	348.9	589.1	347.89
6:30	585.7	323.4	585.0	294.6	18:30	585.5	343.8	589.1	341.30
6:45	585.7	328.2	584.6	312.6	18:45	585.5	340.3	585.5	343.18
7:00	585.7	330.1	585.3	320.8	19:00	585.5	334.9	587.8	341.88
7:15	585.7	321.3	586.8	318.9	19:15	585.5	335.4	575.7	337.96
7:30	585.7	315.6	586.4	312.7	19:30	585.5	331.6	575.4	332.52
7:45	585.7	307.4	590.6	314.0	19:45	585.5	324.8	579.9	332.54
8:00	585.7	283.7	594.0	308.7	20:00	585.5	326.5	576.6	330.34
8:15	585.7	261.9	592.7	309.7	20:15	585.5	324.9	577.8	324.54
8:30	585.7	332.1	594.0	306.6	20:30	585.5	321.1	581.3	324.48
8:45	585.7	304	592.8	304.6	20:45	585.5	311.5	580.6	320.79
9:00	585.7	302.1	593.9	302.4	21:00	585.5	304.4	576.2	313.02
9:15	574.7	304.3	591.9	299.7	21:15	574.7	302.7	579.9	312.75
9:30	574.7	300.5	594.0	295.7	21:30	574.7	295.3	581.8	307.07
9:45	574.7	299.4	583.7	291.3	21:45	574.7	292.2	579.6	299.43
10:00	574.7	295.9	582.8	278.7	22:00	574.7	291.1	579.7	289.41
10:15	574.7	295.2	582.8	278.0	22:15	574.7	286	579.4	277.22
10:30	574.7	294.3	581.4	267.4	22:30	574.7	278.8	578.3	268.84
10:45	574.7	292.8	578.3	276.1	22:45	574.7	275.7	578.0	270.38
11:00	574.7	293.9	550.7	276.7	23:00	574.7	271.5	579.8	272.01
11:15	574.7	294.1	582.2	277.6	23:15	574.7	270.2	579.5	262.10
11:30	574.7	297	582.7	281.1	23:30	574.7	270.4	581.6	260.08
11:45	574.7	298.5	583.7	279.9	23:45	574.7	269.5	580.4	264.69

Yours faithfully
Karma Choden

Coincidental peak load of Day(Last year):	
300.92 MW	17-Nov-16
Maximum Load till date:	
362.09	14-Nov-17



འབྲུག་རྒྱལ་ཁོ་ལས་འཛིན།

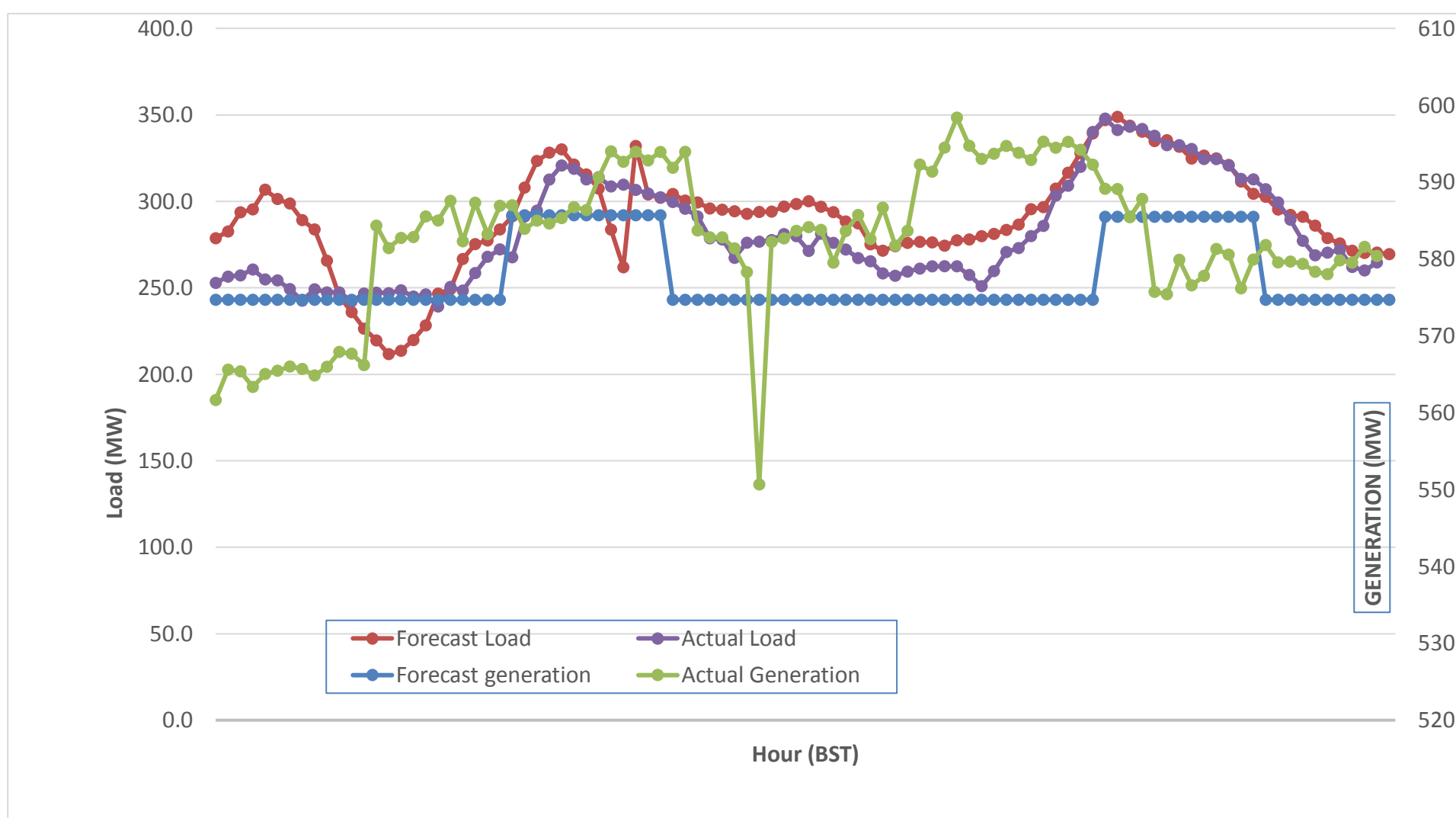
Bhutan Power Corporation Ltd.
 Bhutan Power System Operator
 Thimphu: Bhutan



Message No.: Enter your message number
 From: Shift In-charge, Control Room

Date: 18-Nov-17
 Time: 11:12

Forecast Generation & Load with Actual Generation & Load (17-Nov-2017).



Yours faithfully,
 Karma Choden

	MW	Coincidental peak load of Day(Last year):	
Peak Co-incident Generation(17-Nov-2017).	598.41	300.92 MW	17-Nov-16
Peak Co-incident Load(17-Nov-2017).	347.89		
		Maximum Load till date:	
		362.09	14-Nov-17

Telephone: +975-02335631; Fax: +975-02335632; Email: bhutansystemoperator@bpc.bt; www.bpc.bt



Bhutan Power Corporation Ltd.
Bhutan Power System Operator
Thimphu: Bhutan

ལྷན་སྐྱོད་ལྷན་ཁག་ལྷན་ཁག་།



Message No.: Enter your message number
From: Shift In-charge, Control Room

Date: 18-Nov-17
Time: 11:12

To
 Managing Director, BPC. Email: gemtshering@bpc.bt
 Director, O&MD, DGPC. Email: director.umd@drukgreen.com
 General Manager, TD, BPC. Email: thinleygyeltshen@bpc.bt
 General Manager, DCSD, BPC. Email: sandeprai@bpc.bt
 General Manager, BPSO, BPC. Email: ujjwaldahal@bpc.bt

Sub: Load Generation Balance Report of Today (18-Nov-2017).

Hours (BST)	Forecast		Actual	
	Generation	Load	Generation	Load
0:00	596.9	267.2	574.3	264.03
0:15	596.9	271.4	577.0	263.02
0:30	596.9	275.7	575.0	263.84
0:45	596.9	280.6	580.4	257.73
1:00	596.9	290.4	576.2	256.06
1:15	596.9	289.6	579.5	253.57
1:30	596.9	285.8	576.9	246.82
1:45	596.9	282.7	578.5	254.00
2:00	596.9	283.4	579.6	249.20
2:15	596.9	264.9	576.9	249.86
2:30	596.9	240.9	577.9	246.31
2:45	596.9	235.2	573.5	243.52
3:00	596.9	228.7	576.9	244.49
3:15	596.9	223.5	576.6	246.14
3:30	596.9	220.6	576.6	244.16
3:45	596.9	216.5	577.9	248.71
4:00	596.9	226.2	576.3	253.18
4:15	596.9	227.9	575.1	260.85
4:30	596.9	244.9	575.5	263.73
4:45	596.9	248.8	579.1	263.79
5:00	596.9	263.3	577.9	266.98
5:15	596.9	272.4	577.6	270.59
5:30	596.9	275.6	578.5	273.31
5:45	596.9	281.6	575.9	276.79
6:00	605.5	289.6	578.7	285.20
6:15	605.5	304.8	577.8	296.02
6:30	605.5	320.6	577.3	307.04
6:45	605.5	327	576.3	311.23
7:00	605.5	329.4	575.5	316.15
7:15	605.5	329	587.9	317.48
7:30	605.5	318.7	586.1	316.32
7:45	605.5	282.7	588.5	313.15
8:00	605.5	263.2	585.5	301.27
8:15	605.5	263.4	590.9	296.89
8:30	605.5	322.9	586.6	306.17
8:45	605.5	300.7	588.1	303.83
9:00	605.5	301.7	584.6	306.33

Coincidental peak load of Day(Last year):	
289.49 MW	17-Nov-16

Maximum Load till date:	
362.09	14-Nov-17

Yours faithfully,
 Karma Choden

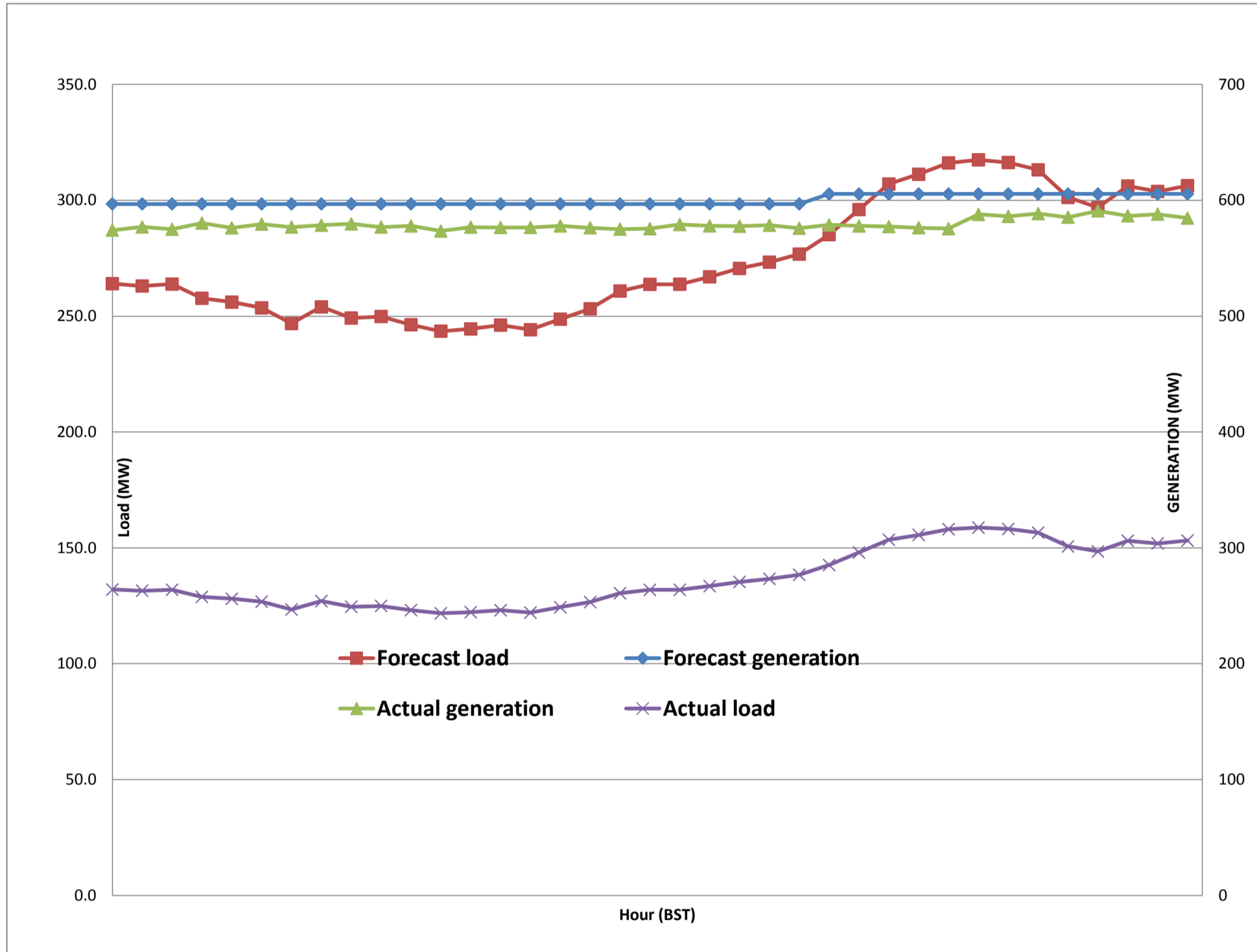
Telephone:



Message No.: Enter your message number
 From: Shift In-charge, Control Room

Date: 18-Nov-17
 Time: 11:12

Forecast Generation & Load with Actual Generation & Load of Today from 00:00hrs to 09:00hrs(18-Nov-2017).



Yours faithfully
 Karma Choden



འབྲུག་གྲོག་ལས་ཁུངས་ལྷན་ཁག།
Bhutan Power Corporation Ltd.
Bhutan Power System Operator
 Thimphu: Bhutan



Message No.: Enter your message number
From: Shift In-charge, Control Room
Date: 18-Nov-17
Time: 11:12

To

Managing Director, BPC. Email: gemtshering@bpc.bt
 Director, O&MD, DGPC. Email: director.umd@drukgreen.com
 General Manager, TD, BPC. Email: ktobgye@bpc.bt
 General Manager, BPSO, BPC. Email: ujjwaldahal@bpc.bt
 Advisor, BPC. Email: bharattamang@bpc.bt

Sub: Load Generation Balance Report of Tomorrow (19-Nov-2017).

Hours (BST)	Forecast		Hours (BST)	Forecast	
	Generation	Load		Generation	Load
0:00	545.10	261.90	4:48	586.4	288.2
0:15	545.10	264.70	2:24	586.4	289.1
0:30	545.10	266.30	0:00	586.4	289.5
0:45	586.40	270.80	7:12	586.4	288.6
1:00	586.40	276.80	16:48	586.4	284.2
1:15	586.40	279.10	0:00	586.4	282.4
1:30	586.40	278.70	2:24	586.4	273.9
1:45	586.40	281.40	4:48	586.4	271.7
2:00	586.40	280.40	4:48	586.4	271.5
2:15	586.40	276.90	19:12	586.4	271.7
2:30	586.40	269.50	21:36	586.4	274.1
2:45	586.40	267.20	4:48	586.4	274.2
3:00	586.40	253.40	16:48	586.4	272.7
3:15	586.40	240.70	2:24	586.4	274
3:30	586.40	222.50	14:24	586.4	274.3
3:45	586.40	213.90	9:36	586.4	272.4
4:00	586.40	209.10	7:12	586.4	273.8
4:15	586.40	206.60	19:12	586.4	277.5
4:30	586.40	212.40	12:00	586.4	281.8
4:45	586.40	212.80	16:48	586.4	288.7
5:00	586.40	215.60	7:12	586.4	290.7
5:15	586.40	221.30	9:36	586.4	303
5:30	586.40	227.10	4:48	586.4	315.3
6:45	586.40	246.40	9:36	586.4	329.2
6:00	586.40	253.70	4:48	586.4	338.8
6:15	597.30	272.70	21:36	597.3	350
6:30	597.30	285.50	14:24	597.3	351
6:45	597.30	287.30	7:12	597.3	346.2
7:00	597.30	290.00	21:36	597.3	343.8
7:15	597.30	273.30	7:12	597.3	338.7
7:30	597.30	268.30	19:12	597.3	338
7:45	597.30	257.60	21:36	597.3	335.3
8:00	597.30	261.30	16:48	597.3	329.7
8:15	597.30	300.60	21:36	597.3	328.6
8:30	597.30	315.00	0:00	597.3	326.5
8:45	597.30	299.90	9:36	597.3	324.6
9:00	597.30	299.30	19:12	597.3	315.8
9:15	586.40	300.70	2:24	597.3	307.7
9:30	586.40	296.90	12:00	597.3	307.7
9:45	586.40	292.10	16:48	597.3	299.5
10:00	586.40	289.20	16:48	597.3	294.5
10:15	586.40	288.30	0:00	597.3	291.2
10:30	586.40	287.20	7:12	586.4	283.7
10:45	586.40	286.40	2:24	586.4	276.9
11:00	586.40	284.70	16:48	586.4	273.1
11:15	586.40	284.00	9:36	586.4	269.9
11:30	586.40	289.20	14:24	586.4	267.1
11:45	596.90	295.20	4:48	586.4	266

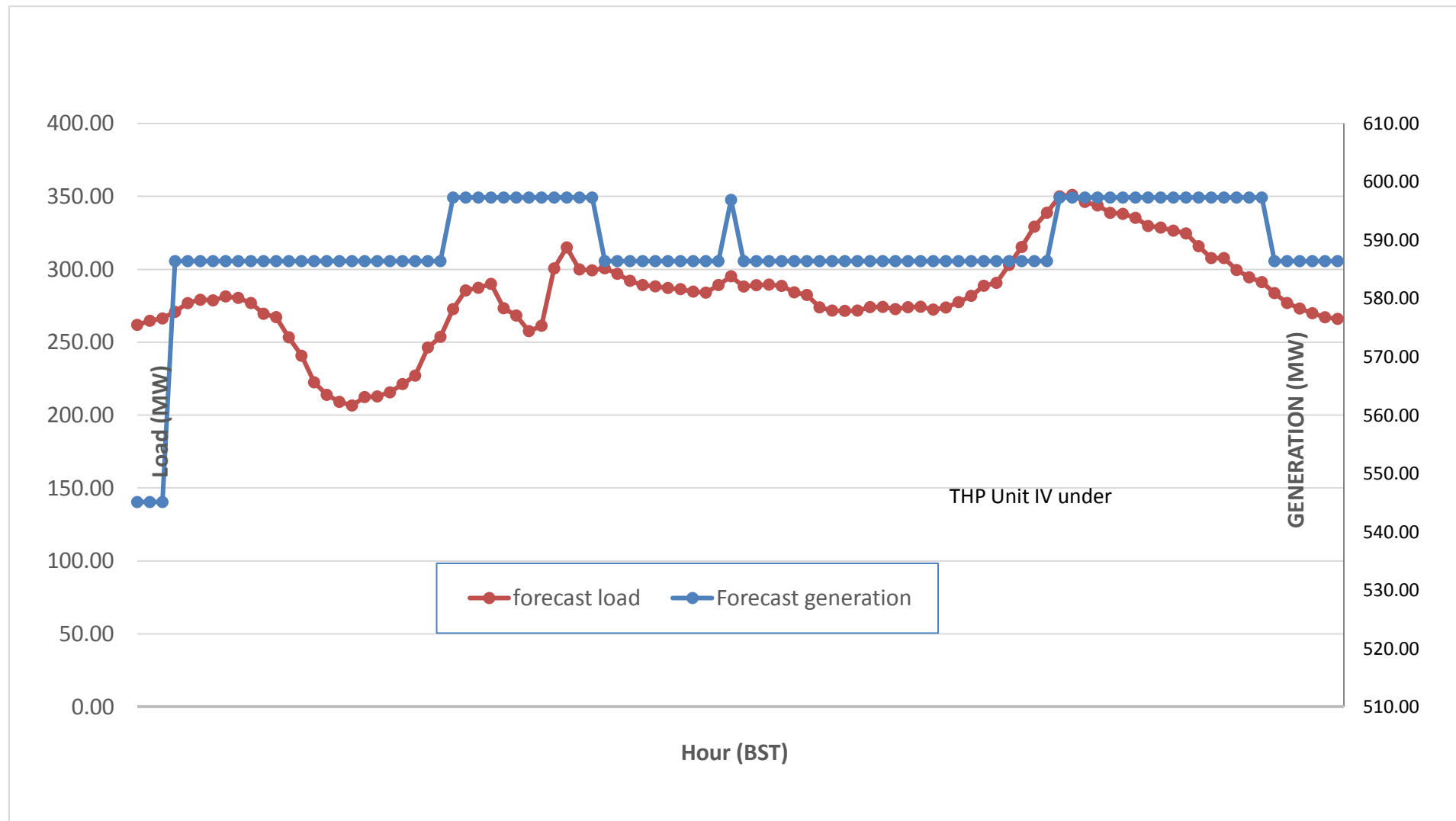
Yours faithfully,
 Karma Choden



Message No.: Enter your message number
 From: Shift In-charge, Control Room

Date: 18-Nov-17
 Time: 11:12

Scheduled Generation & Load Forecast for Tomorrow (19-Nov-2017).



Yours faithfully,
 Karma Choden

	MW
Scheduled Peak Generation(19-Nov-2017).	376.90
Forecast Peak Load(19-Nov-2017).	300.60