



འབྲུག་གློག་ཐོ་ལས་འཛིན།

Bhutan Power Corporation Ltd.
Bhutan Power System Operator
Thimphu: Bhutan



Message No.: Enter your message number
From: Shift In-charge, Control Room

Date: 16-Nov-17
Time: 12:01

To
Managing Director, BPC. Email: gemtshering@bpc.bt
Director, O&MD, DGPC. Email: director.umd@drukgreen.com
General Manager, TD, BPC. Email: ktobgye@bpc.bt
General Manager, DCSD, BPC. Email: sandeeprai@bpc.bt
General Manager, BPSO, BPC. Email: ujjwaldahal@bpc.bt

Sub: Load Generation Balance Report of Yesterday (15-Nov-2017).

Hours (BST)	Forecast		Actual		Hours (BST)	Forecast		Actual	
	Generation	Load	Generation	Load		Generation	Load	Generation	Load
0:00	669.3	261.9	601.1	260.4	12:00	669.3	284.1	585.4	296.55
0:15	669.3	261.1	600.5	256.9	12:15	669.3	281.5	587.0	302.39
0:30	669.3	270.9	598.0	256.1	12:30	669.3	280.7	586.2	295.23
0:45	669.3	274.6	600.8	256.0	12:45	669.3	274.1	584.2	296.91
1:00	669.3	277.9	599.9	251.9	13:00	669.3	274.2	587.7	293.02
1:15	669.3	274.7	596.3	252.2	13:15	669.3	268.4	584.2	280.98
1:30	669.3	276.6	599.8	253.8	13:30	669.3	267.3	587.8	259.01
1:45	669.3	278.5	600.3	258.2	13:45	669.3	265.2	586.2	270.94
2:00	669.3	280.6	602.3	257.0	14:00	669.3	266.1	586.7	270.35
2:15	669.3	284.9	583.4	261.0	14:15	669.3	270	587.1	269.47
2:30	669.3	279.9	583.7	259.2	14:30	669.3	268.5	588.9	269.03
2:45	669.3	281.6	583.1	255.2	14:45	669.3	264.2	586.7	273.58
3:00	669.3	274.3	582.7	256.1	15:00	669.3	266.5	584.9	279.45
3:15	669.3	260.2	580.5	254.5	15:15	669.3	266.8	596.5	280.53
3:30	669.3	235	579.2	257.5	15:30	669.3	267.8	601.0	280.91
3:45	669.3	226.3	582.6	261.8	15:45	669.3	269.2	583.4	285.71
4:00	669.3	213.4	579.3	254.9	16:00	669.3	275	585.2	281.97
4:15	669.3	206	581.5	260.2	16:15	669.3	274.8	582.7	277.46
4:30	669.3	211.1	579.1	266.0	16:30	669.3	286.1	584.6	278.77
4:45	669.3	208.8	583.1	268.9	16:45	669.3	292.2	586.5	287.48
5:00	669.3	209.4	580.7	270.6	17:00	669.3	299.6	583.0	295.14
5:15	669.3	214.7	582.0	271.8	17:15	669.3	309.7	584.3	300.58
5:30	669.3	216.9	580.9	279.1	17:30	669.3	322.1	585.9	306.43
6:45	669.3	233.9	582.5	283.3	17:45	685.3	335.9	584.8	311.46
6:00	685.3	236.3	581.6	291.6	18:00	685.3	341	584.7	328.26
6:15	685.3	259.9	582.3	301.0	18:15	685.3	344.5	584.8	330.52
6:30	685.3	284.6	596.3	310.0	18:30	685.3	345.4	586.2	330.58
6:45	685.3	282.9	595.4	319.4	18:45	685.3	342.5	581.9	305.84
7:00	685.3	278.2	592.6	325.1	19:00	685.3	337.5	595.9	296.65
7:15	685.3	260.6	594.1	313.7	19:15	685.3	338.4	599.3	303.34
7:30	685.3	253.9	594.7	314.7	19:30	685.3	336.3	602.1	300.68
7:45	685.3	244.1	595.9	310.1	19:45	685.3	329.5	597.1	299.39
8:00	685.3	244	595.9	310.2	20:00	685.3	325.3	598.0	299.86
8:15	685.3	273.1	593.5	301.1	20:15	685.3	323.4	615.6	297.50
8:30	685.3	298.8	593.2	310.4	20:30	685.3	321.1	617.9	293.06
8:45	685.3	288.9	595.0	299.5	20:45	685.3	312.4	615.8	291.39
9:00	685.3	289.5	595.9	298.7	21:00	685.3	304.4	616.8	283.70
9:15	685.3	289.3	577.5	309.1	21:15	685.3	305.7	615.4	283.33
9:30	669.3	286	581.3	308.4	21:30	669.3	299.2	614.9	276.13
9:45	669.3	284.7	585.9	308.0	21:45	669.3	297.8	616.5	251.95
10:00	669.3	281.9	582.7	300.2	22:00	669.3	292.4	621.8	264.50
10:15	669.3	277.5	583.1	301.7	22:15	669.3	288	618.1	260.10
10:30	669.3	275.2	588.2	305.8	22:30	669.3	280.9	616.7	257.13
10:45	669.3	278.1	588.0	292.9	22:45	669.3	277.9	600.7	247.10
11:00	669.3	278.6	586.8	294.3	23:00	669.3	272.5	604.8	243.87
11:15	669.3	279.9	586.0	290.4	23:15	669.3	276.7	591.6	242.25
11:30	669.3	282.8	587.2	290.9	23:30	669.3	280.7	591.6	226.89
11:45	669.3	282.1	586.9	296.9	23:45	669.3	277	575.8	237.27

Yours faithfully
Tshering Deki

Coincidental peak load of Day(Last year):	
296.89	15-Nov-16
Maximum Load till date:	
362.09	14-Nov-17



འབྲུག་རྒྱལ་ཁོ་ལས་འཛིན།

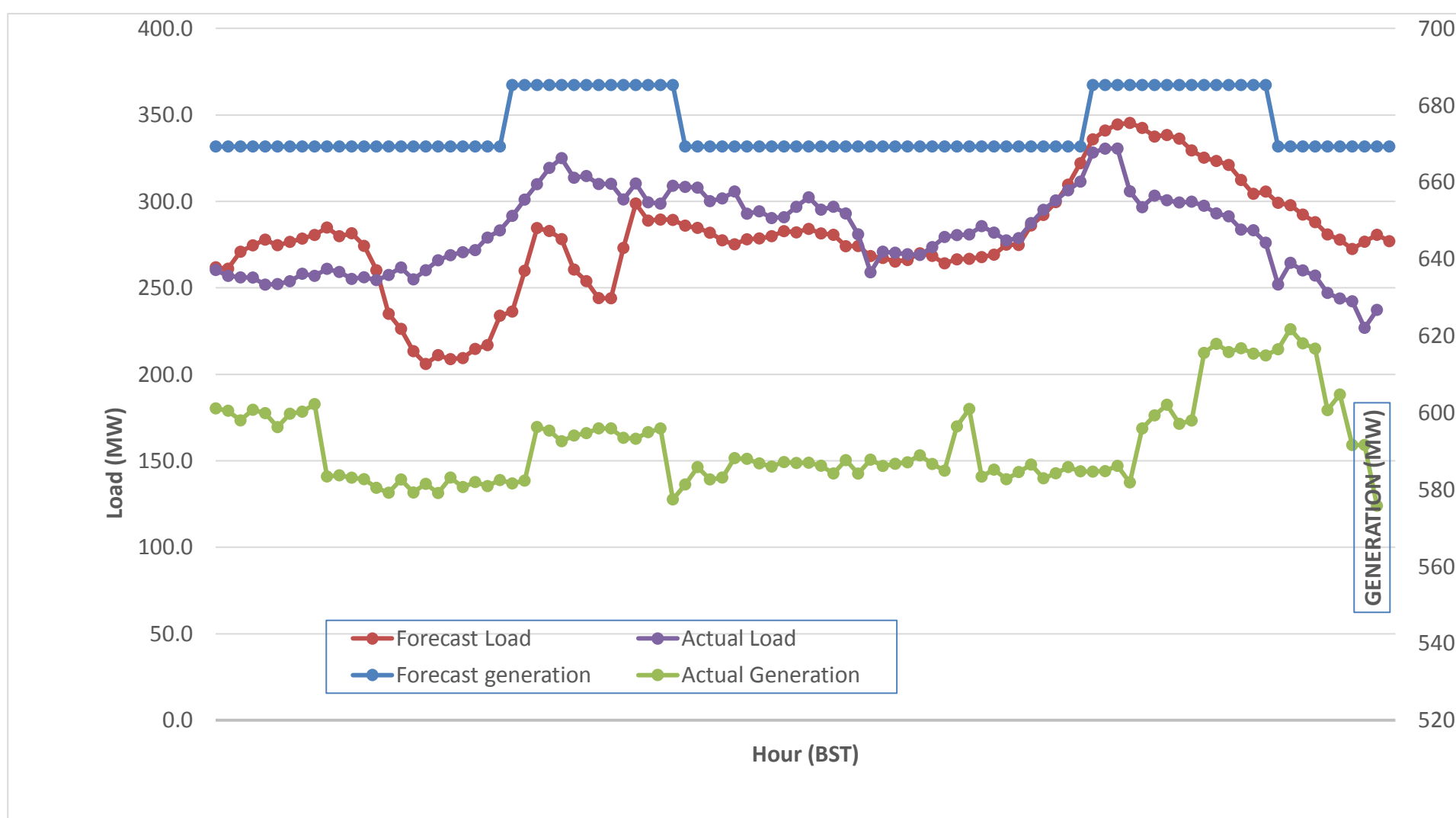
Bhutan Power Corporation Ltd.
 Bhutan Power System Operator
 Thimphu: Bhutan



Message No.: Enter your message number
 From: Shift In-charge, Control Room

Date: 16-Nov-17
 Time: 12:01

Forecast Generation & Load with Actual Generation & Load (15-Nov-2017).



Yours faithfully,
 Tshering Deki

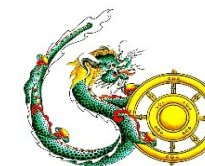
	MW	Coincidental peak load of Day(Last year):	
Peak Co-incident Generation(15-Nov-2017).	621.75	296.89	15-Nov-16
Peak Co-incident Load(15-Nov-2017).	330.58		
		Maximum Load till date:	
		362.09	14-Nov-17

Telephone: +975-02335631; Fax: +975-02335632; Email: bhutansystemoperator@bpc.bt; www.bpc.bt



Bhutan Power Corporation Ltd.
Bhutan Power System Operator
Thimphu: Bhutan

ལྷན་ རྒྱལ་གྱི་ལོ་ལས་འཛིན།



Message No.: Enter your message number
From: Shift In-charge, Control Room

Date: 16-Nov-17
Time: 12:01

To
 Managing Director, BPC. Email: gemtshering@bpc.bt
 Director, O&MD, DGPC. Email: director.omid@drukgreen.com
 General Manager, TD, BPC. Email: thinleygyeltshen@bpc.bt
 General Manager, DCSD, BPC. Email: sandeprai@bpc.bt
 General Manager, BPSO, BPC. Email: ujjwaldahal@bpc.bt

Sub: Load Generation Balance Report of Today (16-Nov-2017).

Hours (BST)	Forecast		Actual	
	Generation	Load	Generation	Load
0:00	588	284.4	565.5	241.26
0:15	588	287	563.9	242.85
0:30	588	302.1	581.7	230.19
0:45	588	297.2	590.9	236.57
1:00	588	308.7	597.9	225.06
1:15	588	304.5	566.6	242.73
1:30	588	299.8	566.1	244.46
1:45	588	295.3	567.7	251.25
2:00	588	295	566.8	252.52
2:15	588	279	564.2	247.11
2:30	588	255.5	564.2	238.04
2:45	588	241.1	563.0	239.29
3:00	588	230.7	563.3	237.17
3:15	588	220.5	564.4	232.26
3:30	588	206.1	568.1	249.76
3:45	588	205.4	565.8	231.87
4:00	588	212.5	566.8	246.09
4:15	588	219.1	565.2	238.41
4:30	588	238.8	567.5	247.42
4:45	588	243.2	564.8	244.14
5:00	588	261.1	563.5	244.15
5:15	588	276.1	586.6	253.36
5:30	588	278	586.8	259.87
5:45	588	284.5	586.2	270.47
6:00	600	293.5	583.8	280.34
6:15	600	309	586.7	295.09
6:30	600	327	595.0	305.26
6:45	600	331.1	595.5	321.68
7:00	600	331.1	594.9	329.38
7:15	600	321	597.4	327.37
7:30	600	314.9	597.1	321.54
7:45	600	304.2	594.3	314.30
8:00	600	276.6	595.9	308.70
8:15	600	253.6	595.9	300.95
8:30	600	338.3	595.9	295.87
8:45	600	303	594.5	284.32
9:00	600	302.9	594.4	290.83

Coincidental peak load of	
296.89	15-Nov-16

362.09	14-Nov-17
--------	-----------

Yours faithfully,
 Tshering Deki

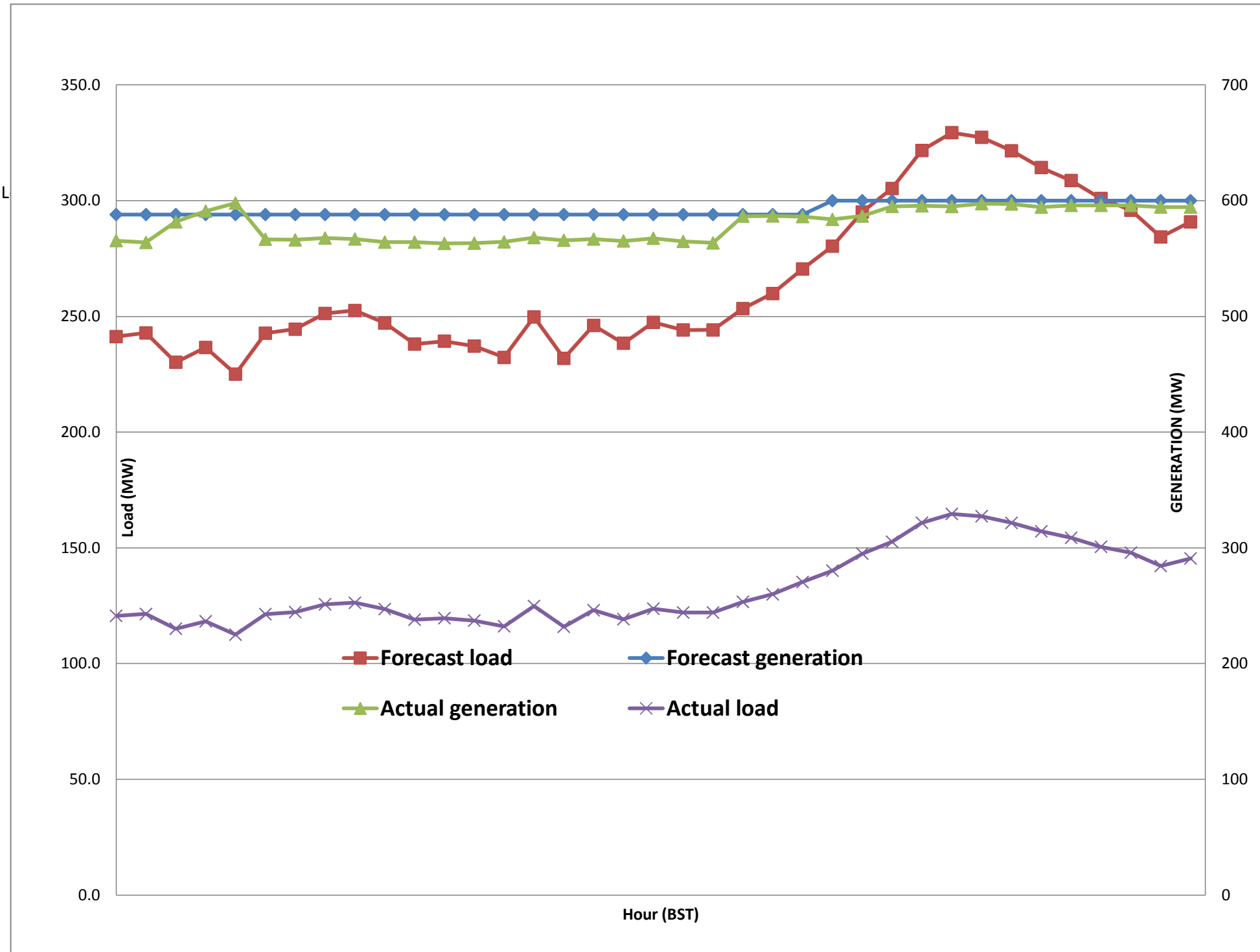
Telephone:



Message No.: Enter your message number
 From: Shift In-charge, Control Room

11/10/2017 10:59 16-Nov-17
 11/10/2017 10:59 12:01

Forecast Generation & Load with Actual Generation & Load of Today from 00:00hrs to 09:00hrs(16-Nov-2017).



Yours faithfully
 Tshering Deki



འབྲུག་གྲོག་ལས་ཁུངས་།
Bhutan Power Corporation Ltd.
Bhutan Power System Operator
 Thimphu: Bhutan



Message No.: Enter your message number
From: Shift In-charge, Control Room
Date: 16-Nov-17
Time: 12:01

To

Managing Director, BPC. Email: gemtshering@bpc.bt
 Director, O&MD, DGPC. Email: director.umd@drukgreen.com
 General Manager, TD, BPC. Email: ktobgye@bpc.bt
 General Manager, BPSO, BPC. Email: ujjwaldahal@bpc.bt
 Advisor, BPC. Email: bharattamang@bpc.bt

Sub: Load Generation Balance Report of Tomorrow (17-Nov-2017).

Hours (BST)	Forecast		Hours (BST)	Forecast	
	Generation	Load		Generation	Load
0:00	574.70	278.70	4:48	574.7	300.1
0:15	574.70	282.60	2:24	574.7	296.9
0:30	574.70	293.70	0:00	574.7	293.8
0:45	574.70	295.40	7:12	574.7	288.4
1:00	574.70	306.80	16:48	574.7	287.3
1:15	574.70	301.40	0:00	574.7	275.2
1:30	574.70	298.80	2:24	574.7	271.5
1:45	574.70	289.20	4:48	574.7	274.1
2:00	574.70	283.80	4:48	574.7	276
2:15	574.70	265.70	19:12	574.7	276.6
2:30	574.70	245.10	21:36	574.7	276.3
2:45	574.70	236.00	4:48	574.7	274.4
3:00	574.70	226.40	16:48	574.7	277.5
3:15	574.70	219.60	2:24	574.7	278
3:30	574.70	211.70	14:24	574.7	279.9
3:45	574.70	213.60	9:36	574.7	281.2
4:00	574.70	219.80	7:12	574.7	283.5
4:15	574.70	228.30	19:12	574.7	286.6
4:30	574.70	246.70	12:00	574.7	295.5
4:45	574.70	249.30	16:48	574.7	296.7
5:00	574.70	266.70	7:12	574.7	307.4
5:15	574.70	275.30	9:36	574.7	316.6
5:30	574.70	277.40	4:48	574.7	327.9
6:45	574.70	283.80	9:36	574.7	339.3
6:00	585.70	291.40	4:48	585.5	347
6:15	585.70	308.00	21:36	585.5	348.9
6:30	585.70	323.40	14:24	585.5	343.8
6:45	585.70	328.20	7:12	585.5	340.3
7:00	585.70	330.10	21:36	585.5	334.9
7:15	585.70	321.30	7:12	585.5	335.4
7:30	585.70	315.60	19:12	585.5	331.6
7:45	585.70	307.40	21:36	585.5	324.8
8:00	585.70	283.70	16:48	585.5	326.5
8:15	585.70	261.90	21:36	585.5	324.9
8:30	585.70	332.10	0:00	585.5	321.1
8:45	585.70	304.00	9:36	585.5	311.5
9:00	585.70	302.10	19:12	585.5	304.4
9:15	574.70	304.30	2:24	574.7	302.7
9:30	574.70	300.50	12:00	574.7	295.3
9:45	574.70	299.40	16:48	574.7	292.2
10:00	574.70	295.90	16:48	574.7	291.1
10:15	574.70	295.20	0:00	574.7	286
10:30	574.70	294.30	7:12	574.7	278.8
10:45	574.70	292.80	2:24	574.7	275.7
11:00	574.70	293.90	16:48	574.7	271.5
11:15	574.70	294.10	9:36	574.7	270.2
11:30	574.70	297.00	14:24	574.7	270.4
11:45	574.70	298.50	4:48	574.7	269.5

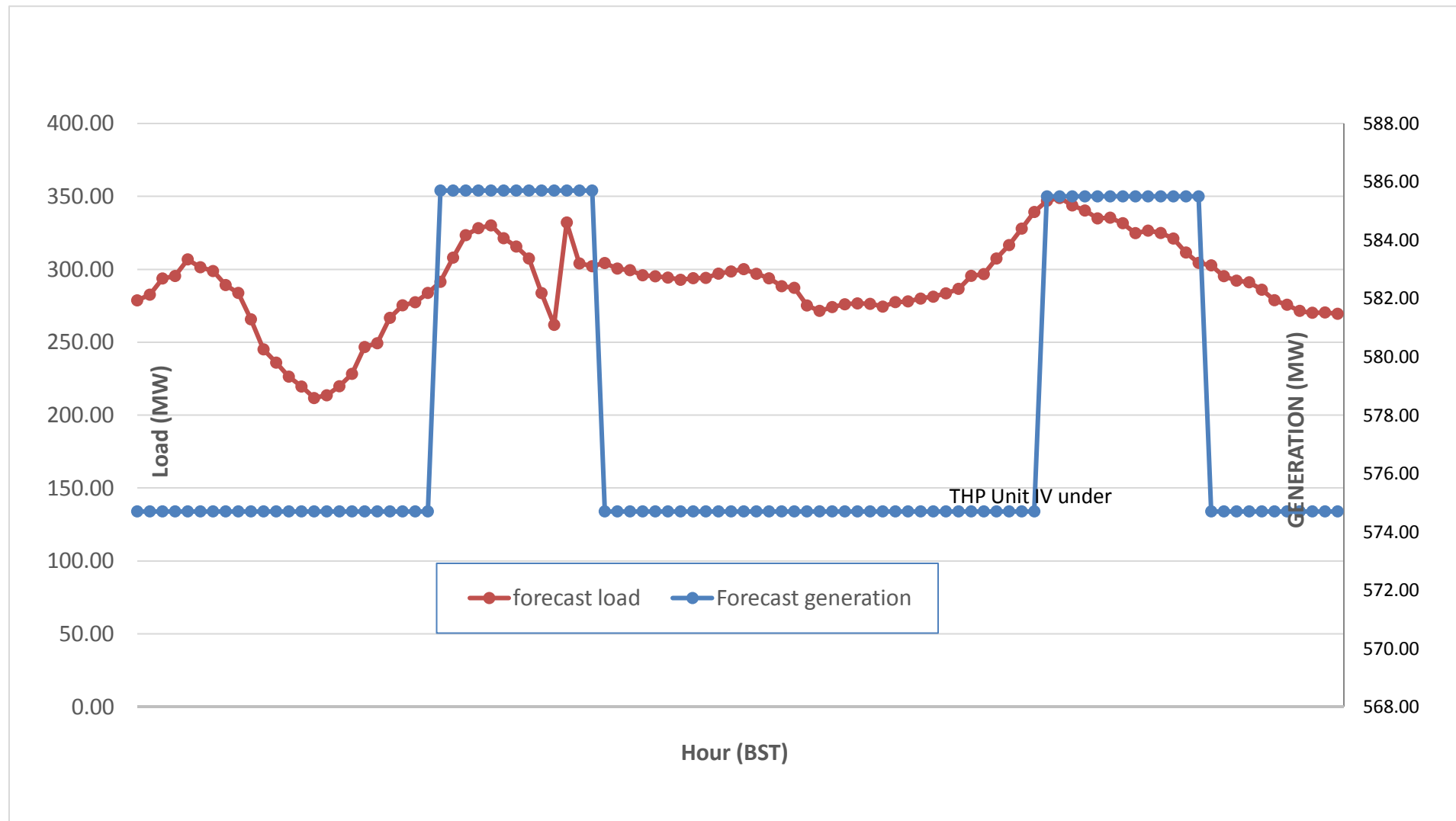
Yours faithfully,
 Tshering Deki



Message No.: Enter your message number
 From: Shift In-charge, Control Room

Date: 16-Nov-17
 Time: 12:01

Scheduled Generation & Load Forecast for Tomorrow (17-Nov-2017).



Yours faithfully,
 Tshering Deki

	MW
Scheduled Peak Generation(17-Nov-2017).	376.90
Forecast Peak Load(17-Nov-2017).	300.60