



འབྲུག་གླིང་མེ་ལས་འཛིན།

Bhutan Power Corporation Ltd.
Bhutan Power System Operator
Thimphu: Bhutan



Message No.: Enter your message number
From: Shift In-charge, Control Room

Date: 15-Nov-17
Time: 10:41

To
Managing Director, BPC. Email: gemtshering@bpc.bt
Director, O&MD, DGPC. Email: director.omb@drukgreen.com
General Manager, TD, BPC. Email: ktobgye@bpc.bt
General Manager, DCSD, BPC. Email: sandeeprai@bpc.bt
General Manager, BPSO, BPC. Email: ujjwaldahal@bpc.bt

Sub: Load Generation Balance Report of Yesterday (14-Nov-2017).

Hours (BST)	Forecast		Actual		Hours (BST)	Forecast		Actual	
	Generation	Load	Generation	Load		Generation	Load	Generation	Load
0:00	622.4	262.2	580.6	298.2	12:00	622.4	284	590.0	334.12
0:15	622.4	261.3	580.1	306.9	12:15	622.4	281.3	587.4	320.22
0:30	622.4	271.4	578.2	310.3	12:30	622.4	280.6	593.2	309.14
0:45	622.4	275.1	578.7	306.4	12:45	622.4	274	589.8	309.91
1:00	622.4	278.7	580.2	306.6	13:00	622.4	274.1	592.4	314.27
1:15	622.4	275.4	575.8	309.5	13:15	622.4	268.3	596.0	312.50
1:30	622.4	277.3	582.2	305.5	13:30	622.4	267.1	609.4	291.21
1:45	622.4	279.2	580.3	309.4	13:45	622.4	265	612.3	296.88
2:00	622.4	281.2	582.3	310.8	14:00	622.4	265.9	608.0	299.33
2:15	622.4	285.6	578.2	313.6	14:15	622.4	269.9	613.0	297.88
2:30	622.4	280.5	580.6	314.6	14:30	622.4	268.3	609.3	305.80
2:45	622.4	282.2	581.2	310.8	14:45	622.4	264.1	613.9	295.52
3:00	622.4	274.7	581.8	316.9	15:00	622.4	266.4	608.8	299.41
3:15	622.4	260.3	583.6	310.7	15:15	622.4	266.4	607.4	297.21
3:30	622.4	234.8	586.7	300.7	15:30	622.4	267.6	609.8	302.27
3:45	622.4	226	588.3	294.5	15:45	622.4	269	613.8	296.47
4:00	622.4	213.1	588.3	311.8	16:00	622.4	274.9	614.8	302.63
4:15	622.4	205.6	584.9	310.0	16:15	622.4	274.4	611.7	309.24
4:30	622.4	210.9	600.3	311.0	16:30	622.4	285.8	610.6	316.73
4:45	622.4	208.7	597.1	312.7	16:45	622.4	292.1	607.0	322.63
5:00	622.4	209.1	601.5	314.2	17:00	622.4	299.4	611.1	327.18
5:15	622.4	214	595.4	313.7	17:15	622.4	309.5	612.3	337.70
5:30	622.4	216.2	599.1	318.0	17:30	622.4	321.9	622.1	350.87
6:45	622.4	233	600.1	310.0	17:45	622.4	335.7	624.9	357.10
6:00	622.4	235.2	603.4	328.5	18:00	622.4	340.6	622.7	365.95
6:15	622.4	258.5	601.3	330.8	18:15	622.4	344.2	624.6	371.39
6:30	622.4	282.8	598.1	341.8	18:30	622.4	345.1	624.8	365.91
6:45	622.4	281.1	598.5	348.6	18:45	622.4	342.3	625.3	360.98
7:00	622.4	276.5	605.8	346.7	19:00	622.4	337.2	623.3	362.49
7:15	622.4	259.1	599.3	343.1	19:15	622.4	338.2	623.4	356.85
7:30	622.4	252.6	602.3	336.4	19:30	622.4	336.5	623.7	348.78
7:45	622.4	243.5	605.0	326.1	19:45	622.4	329.6	620.6	346.96
8:00	622.4	243.7	597.0	330.1	20:00	622.4	325.2	624.1	336.21
8:15	622.4	273.5	602.0	332.9	20:15	622.4	323.4	623.4	337.13
8:30	622.4	299.4	601.0	330.2	20:30	622.4	321.2	624.7	333.91
8:45	622.4	289	599.7	333.0	20:45	622.4	312.5	624.0	316.85
9:00	622.4	289.6	600.6	328.5	21:00	622.4	304.4	619.4	305.50
9:15	622.4	289.3	589.9	330.7	21:15	622.4	305.7	608.4	299.71
9:30	622.4	285.9	594.2	330.0	21:30	622.4	299.2	606.4	281.44
9:45	622.4	284.7	590.3	316.2	21:45	622.4	297.8	604.0	287.96
10:00	622.4	281.7	589.4	315.3	22:00	622.4	292.5	605.7	288.13
10:15	622.4	277.4	586.6	317.2	22:15	622.4	288.1	606.8	277.74
10:30	622.4	275.1	591.2	315.1	22:30	622.4	281	605.0	273.61
10:45	622.4	278.3	590.0	313.0	22:45	622.4	278.1	606.8	268.35
11:00	622.4	278.7	588.2	319.2	23:00	622.4	272.6	603.8	258.66
11:15	622.4	280	591.4	334.2	23:15	622.4	277.3	600.8	261.28
11:30	622.4	282.8	594.1	330.3	23:30	622.4	281.5	599.8	259.13
11:45	622.4	282.2	590.3	330.5	23:45	622.4	277.6	600.7	256.52

Yours faithfully
Tshering Deki

Coincidental peak load of Day(Last year):	
294.83 MW	14-Nov-16
Maximum Load till date:	
362.09	14-Nov-17



འབྲུག་གྲོག་མེ་ལས་འཛིན།

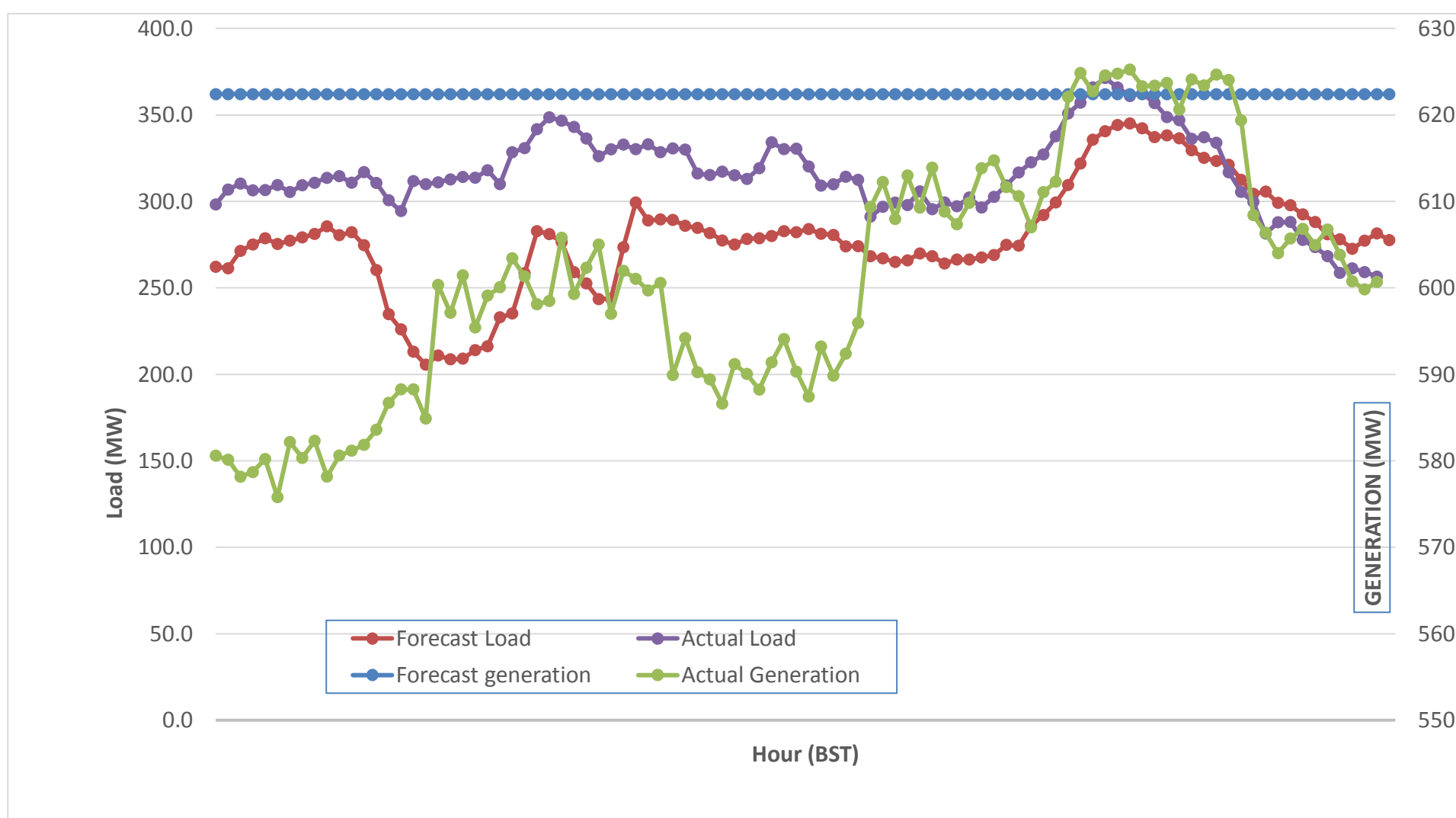
Bhutan Power Corporation Ltd.
 Bhutan Power System Operator
 Thimphu: Bhutan



Message No.: Enter your message number
 From: Shift In-charge, Control Room

Date: 15-Nov-17
 Time: 10:41

Forecast Generation & Load with Actual Generation & Load (14-Nov-2017).



Yours faithfully,
 Tshering Deki

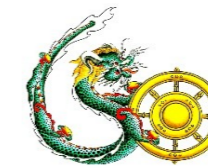
	MW	Coincidental peak load of Day(Last year):	
Peak Co-incident Generation(14-Nov-2017).	625.25	294.83 MW	14-Nov-16
Peak Co-incident Load(14-Nov-2017).	371.39		
		Maximum Load till date:	
		362.09	14-Nov-17

Telephone: +975-02335631; Fax: +975-02335632; Email: bhutansystemoperator@bpc.bt; www.bpc.bt



Bhutan Power Corporation Ltd.
Bhutan Power System Operator
Thimphu: Bhutan

ལྷན་སྐྱོང་གི་ལས་འཛིན།



Message No.: Enter your message number
From: Shift In-charge, Control Room

Date: 15-Nov-17
Time: 10:41

To
 Managing Director, BPC. Email: gemtshering@bpc.bt
 Director, O&MD, DGPC. Email: director.umd@drukgreen.com
 General Manager, TD, BPC. Email: thinleygyeltshen@bpc.bt
 General Manager, DCSD, BPC. Email: sandeprai@bpc.bt
 General Manager, BPSO, BPC. Email: ujjwaldahal@bpc.bt

Sub: Load Generation Balance Report of Today (15-Nov-2017).

Hours (BST)	Forecast		Actual	
	Generation	Load	Generation	Load
0:00	669.3	407.4	601.1	260.35
0:15	669.3	408.2	600.5	256.95
0:30	669.3	398.4	598.0	256.06
0:45	669.3	394.7	600.8	255.99
1:00	669.3	391.4	599.9	251.88
1:15	669.3	394.6	596.3	252.20
1:30	669.3	392.7	599.8	253.83
1:45	669.3	390.8	600.3	258.18
2:00	669.3	388.7	602.3	256.97
2:15	669.3	384.4	583.4	261.03
2:30	669.3	389.4	583.7	259.22
2:45	669.3	387.7	583.1	255.18
3:00	669.3	395	582.7	256.14
3:15	669.3	409.1	580.5	254.50
3:30	669.3	434.3	579.2	257.47
3:45	669.3	443	582.6	261.80
4:00	669.3	455.9	579.3	254.93
4:15	669.3	463.3	581.5	260.21
4:30	669.3	458.2	579.1	265.96
4:45	669.3	460.5	583.1	268.91
5:00	669.3	459.9	580.7	270.63
5:15	669.3	454.6	582.0	271.84
5:30	669.3	452.4	580.9	279.08
5:45	669.3	435.4	582.5	283.25
6:00	685.3	449	581.6	291.64
6:15	685.3	425.4	582.3	301.05
6:30	685.3	400.7	596.3	309.96
6:45	685.3	402.4	595.4	319.40
7:00	685.3	407.1	592.6	325.05
7:15	685.3	424.7	594.1	313.70
7:30	685.3	431.4	594.7	314.70
7:45	685.3	441.2	595.9	310.07
8:00	685.3	441.3	595.9	310.19
8:15	685.3	412.2	593.5	301.15
8:30	685.3	386.5	593.2	310.38
8:45	685.3	396.4	595.0	299.50
9:00	685.3	395.8	595.9	298.72

Coincidental peak load of	
294.83 MW	14-Nov-16

Yours faithfully,
 Tshering Deki

362.09	14-Nov-17
--------	-----------

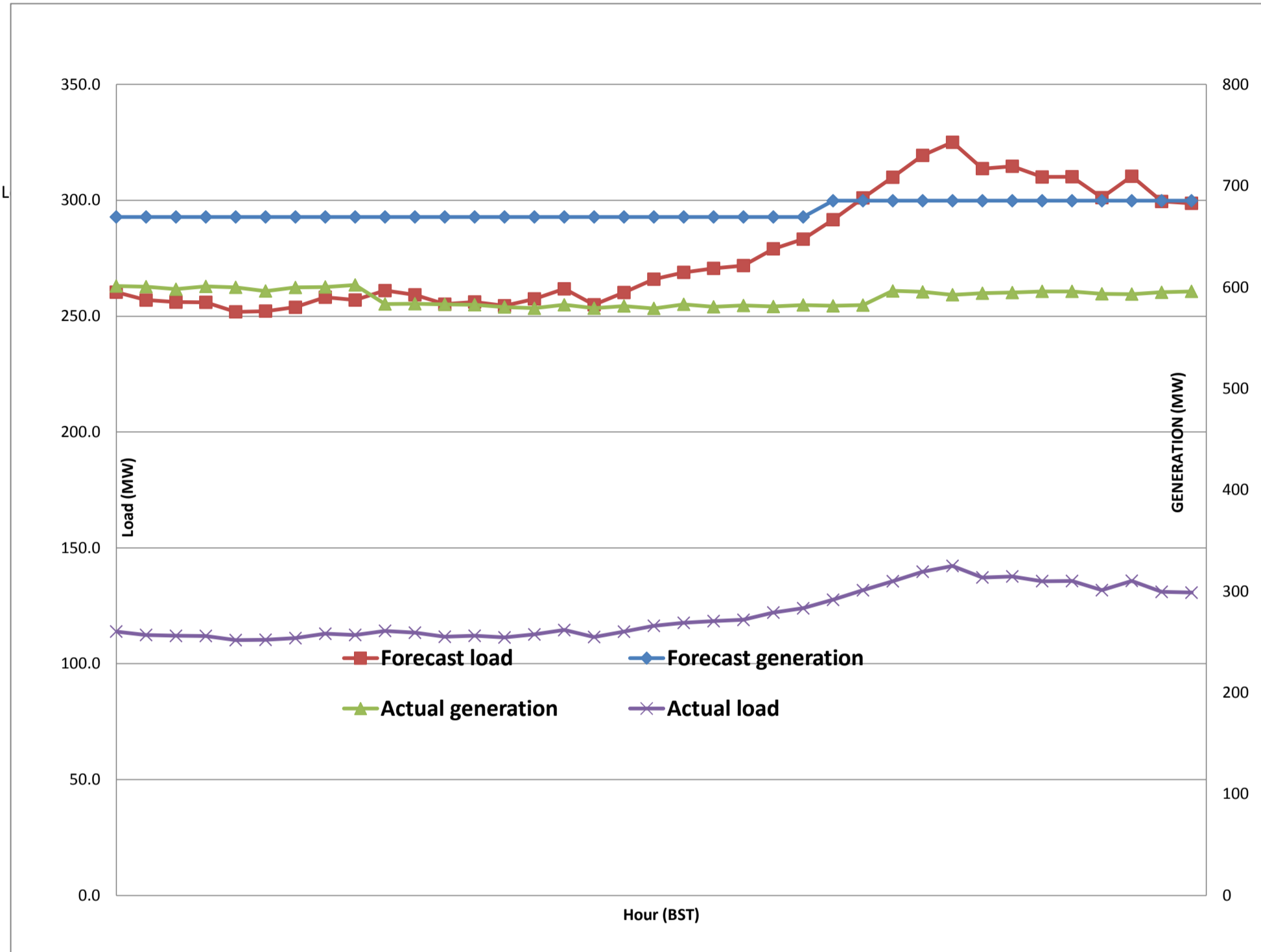
Telephone:



Message No.: Enter your message number
 From: Shift In-charge, Control Room

11/10/2017 10:59 15-Nov-17
 11/10/2017 10:59 10:41

Forecast Generation & Load with Actual Generation & Load of Today from 00:00hrs to 09:00hrs(15-Nov-2017).



Yours faithfully
 Tshering Deki



འབྲུག་གྲོགས་ཚེལ་སྐུ་ལྷན་ཁག།
Bhutan Power Corporation Ltd.
Bhutan Power System Operator
 Thimphu: Bhutan



Message No.: Enter your message number
From: Shift In-charge, Control Room
Date: 15-Nov-17
Time: 10:41

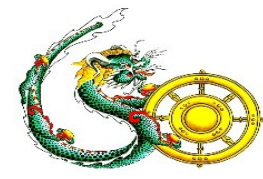
To

Managing Director, BPC. Email: gemtshering@bpc.bt
 Director, O&MD, DGPC. Email: director.umd@drukgreen.com
 General Manager, TD, BPC. Email: ktobgye@bpc.bt
 General Manager, BPSO, BPC. Email: ujjwaldahal@bpc.bt
 Advisor, BPC. Email: bharattamang@bpc.bt

Sub: Load Generation Balance Report of Tomorrow (16-Nov-2017).

Hours (BST)	Forecast		Hours (BST)	Forecast	
	Generation	Load		Generation	Load
0:00	588.00	284.40	4:48	588	299.1
0:15	588.00	287.00	2:24	588	294
0:30	588.00	302.10	0:00	588	291.6
0:45	588.00	297.20	7:12	588	285.2
1:00	588.00	308.70	16:48	588	285
1:15	588.00	304.50	0:00	588	280
1:30	588.00	299.80	2:24	588	275
1:45	588.00	295.30	4:48	588	274.3
2:00	588.00	295.00	4:48	588	276.6
2:15	588.00	279.00	19:12	588	278
2:30	588.00	255.50	21:36	588	277.9
2:45	588.00	241.10	4:48	588	273.8
3:00	588.00	230.70	16:48	588	276.2
3:15	588.00	220.50	2:24	588	276.3
3:30	588.00	206.10	14:24	588	278.2
3:45	588.00	205.40	9:36	588	278.5
4:00	588.00	212.50	7:12	588	285.5
4:15	588.00	219.10	19:12	588	288.3
4:30	588.00	238.80	12:00	588	298.7
4:45	588.00	243.20	16:48	588	298.1
5:00	588.00	261.10	7:12	588	309.7
5:15	588.00	276.10	9:36	588	320.2
5:30	588.00	278.00	4:48	588	333
6:45	588.00	284.50	9:36	588	345
6:00	600.00	293.50	4:48	600	350.4
6:15	600.00	309.00	21:36	600	353.4
6:30	600.00	327.00	14:24	600	349.7
6:45	600.00	331.10	7:12	600	350.4
7:00	600.00	331.10	21:36	600	345.6
7:15	600.00	321.00	7:12	600	344.9
7:30	600.00	314.90	19:12	600	341.6
7:45	600.00	304.20	21:36	600	335.6
8:00	600.00	276.60	16:48	600	335.4
8:15	600.00	253.60	21:36	600	333
8:30	600.00	338.30	0:00	600	330.8
8:45	600.00	303.00	9:36	600	318.5
9:00	600.00	302.90	19:12	600	310.8
9:15	588.00	302.90	2:24	588	308.5
9:30	588.00	297.10	12:00	588	302
9:45	588.00	298.10	16:48	588	303.5
10:00	588.00	293.80	16:48	588	298.9
10:15	588.00	292.20	0:00	588	293.4
10:30	588.00	288.70	7:12	588	286.5
10:45	588.00	291.60	2:24	588	285.4
11:00	588.00	291.90	16:48	588	280.8
11:15	588.00	297.00	9:36	588	279.9
11:30	588.00	296.20	14:24	588	284.2
11:45	588.00	298.00	4:48	588	278.6

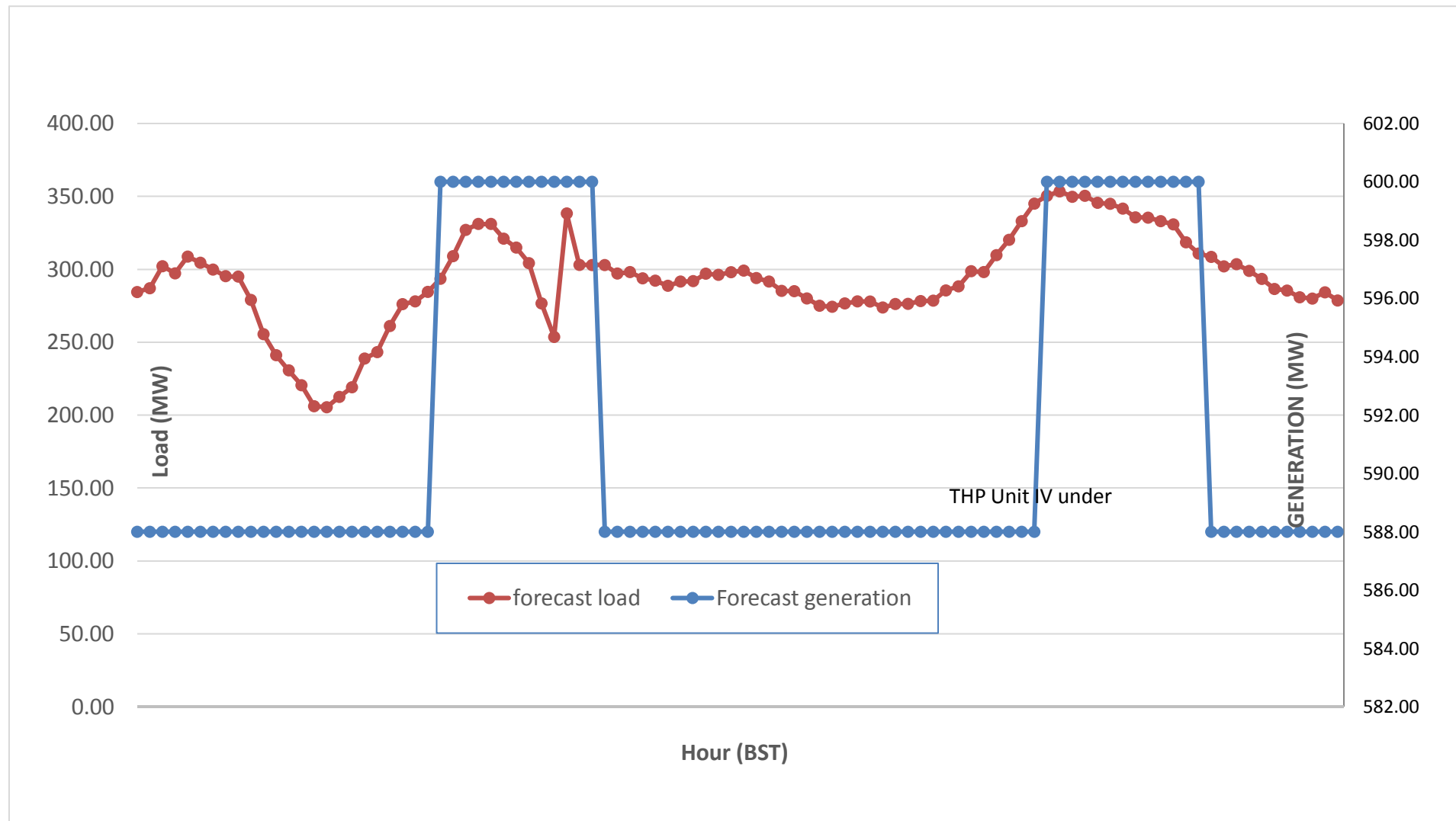
Yours faithfully,
 Tshering Deki



Message No.: Enter your message number
 From: Shift In-charge, Control Room

Date: 15-Nov-17
 Time: 10:41

Scheduled Generation & Load Forecast for Tomorrow (16-Nov-2017).



Yours faithfully,
 Tshering Deki

	MW
Scheduled Peak Generation(16-Nov-2017).	376.90
Forecast Peak Load(16-Nov-2017).	300.60