



འབྲུག་རྒྱལ་ཁོ་ལས་འཛིན།

Bhutan Power Corporation Ltd.
Bhutan Power System Operator
Thimphu: Bhutan



Message No.: Enter your message number
From: Shift In-charge, Control Room

Date: 14-Nov-17
Time: 10:41

To
Managing Director, BPC. Email: gemtshering@bpc.bt
Director, O&MD, DGPC. Email: director.omb@drukgreen.com
General Manager, TD, BPC. Email: ktobgye@bpc.bt
General Manager, DCSD, BPC. Email: sandeeprai@bpc.bt
General Manager, BPSO, BPC. Email: ujjwaldahal@bpc.bt

Sub: **Load Generation Balance Report of Yesterday (13-Nov-2017).**

Hours (BST)	Forecast		Actual		Hours (BST)	Forecast		Actual	
	Generation	Load	Generation	Load		Generation	Load	Generation	Load
0:00	620.2	261.2	617.2	263.0	12:00	620.2	276.6	626.0	352.63
0:15	620.2	260.2	616.1	265.2	12:15	620.2	274.7	623.5	343.60
0:30	620.2	262.3	615.5	271.7	12:30	620.2	273.5	621.0	328.80
0:45	620.2	260.4	617.0	268.2	12:45	620.2	269	621.4	330.90
1:00	620.2	261.5	615.7	268.1	13:00	620.2	268.9	624.3	315.91
1:15	620.2	259	616.4	265.5	13:15	620.2	264.3	622.2	324.43
1:30	620.2	262	618.7	263.3	13:30	620.2	259	624.5	311.14
1:45	620.2	265.9	617.5	264.8	13:45	620.2	257.4	616.8	297.23
2:00	620.2	271.4	615.1	260.9	14:00	620.2	262.7	611.0	288.01
2:15	620.2	278.8	616.4	261.0	14:15	620.2	263.4	612.6	281.38
2:30	620.2	280.4	631.2	261.7	14:30	620.2	262.9	608.6	274.55
2:45	620.2	282.3	627.1	264.8	14:45	620.2	256	610.3	268.20
3:00	620.2	283.4	628.5	261.8	15:00	620.2	259.7	609.2	258.61
3:15	620.2	267.5	627.2	253.6	15:15	620.2	258.7	611.5	263.30
3:30	620.2	243.3	630.0	272.3	15:30	620.2	259.7	609.2	272.52
3:45	620.2	243.6	627.4	285.0	15:45	620.2	260.9	607.3	240.54
4:00	620.2	242.4	630.9	293.4	16:00	620.2	266.1	612.5	258.96
4:15	620.2	240.6	629.3	302.2	16:15	620.2	269.7	614.0	264.05
4:30	620.2	252.8	593.7	298.9	16:30	620.2	279.1	610.0	260.28
4:45	620.2	243.9	595.7	304.0	16:45	620.2	282.8	611.5	259.15
5:00	620.2	234.8	613.8	306.9	17:00	620.2	290.6	612.3	252.88
5:15	620.2	227.1	632.6	304.3	17:15	620.2	300.5	610.7	267.64
5:30	620.2	225.9	633.4	311.5	17:30	620.2	312.7	611.7	272.75
6:45	620.2	225	631.2	311.4	17:45	620.2	326.5	609.3	274.60
6:00	620.2	219.3	629.0	302.5	18:00	620.2	332.1	606.2	273.04
6:15	620.2	232.8	626.6	299.0	18:15	620.2	336.5	613.3	276.19
6:30	620.2	247	625.0	299.0	18:30	620.2	338.6	611.3	279.77
6:45	620.2	252.3	625.1	302.3	18:45	620.2	336	614.1	300.91
7:00	620.2	250.4	626.1	302.1	19:00	620.2	331.6	615.1	323.66
7:15	620.2	246.1	624.7	301.2	19:15	620.2	330.7	612.1	334.91
7:30	620.2	245.8	623.5	297.5	19:30	620.2	330.4	615.6	334.86
7:45	620.2	253.7	618.6	296.1	19:45	620.2	323.7	612.2	322.91
8:00	620.2	275.9	619.2	283.7	20:00	620.2	320.8	607.9	297.13
8:15	620.2	322.7	618.6	270.0	20:15	620.2	320.5	609.6	291.84
8:30	620.2	284.9	613.4	279.9	20:30	620.2	317.1	611.8	290.35
8:45	620.2	284	615.8	282.6	20:45	620.2	308	615.8	296.95
9:00	620.2	281.4	615.3	280.1	21:00	620.2	301	612.2	303.55
9:15	620.2	281.7	614.0	287.2	21:15	620.2	300.3	610.9	298.92
9:30	620.2	280.5	610.7	285.7	21:30	620.2	295.1	613.0	298.49
9:45	620.2	277.9	611.4	289.0	21:45	620.2	294.5	613.5	289.23
10:00	620.2	274.5	613.7	282.0	22:00	620.2	288.8	615.7	291.15
10:15	620.2	269.6	614.4	300.8	22:15	620.2	285.9	625.5	283.41
10:30	620.2	266	612.5	321.2	22:30	620.2	278.8	624.0	291.12
10:45	620.2	268.9	612.7	330.0	22:45	620.2	275.5	625.2	284.52
11:00	620.2	269.4	610.6	355.4	23:00	620.2	270	628.0	276.85
11:15	620.2	270.4	612.9	363.6	23:15	620.2	266.9	622.0	265.02
11:30	620.2	274.9	622.3	361.4	23:30	620.2	266.4	622.0	271.74
11:45	620.2	274	618.7	354.1	23:45	620.2	263.3	628.3	266.80

Yours faithfully
Pema Lhamo

Coincidental peak load of Day(Last year):	
267.10 MW	13-Nov-16
Maximum Load till date:	
349.25	12-Nov-17



འབྲུག་རྒྱལ་ཁོ་ལས་འཛིན།

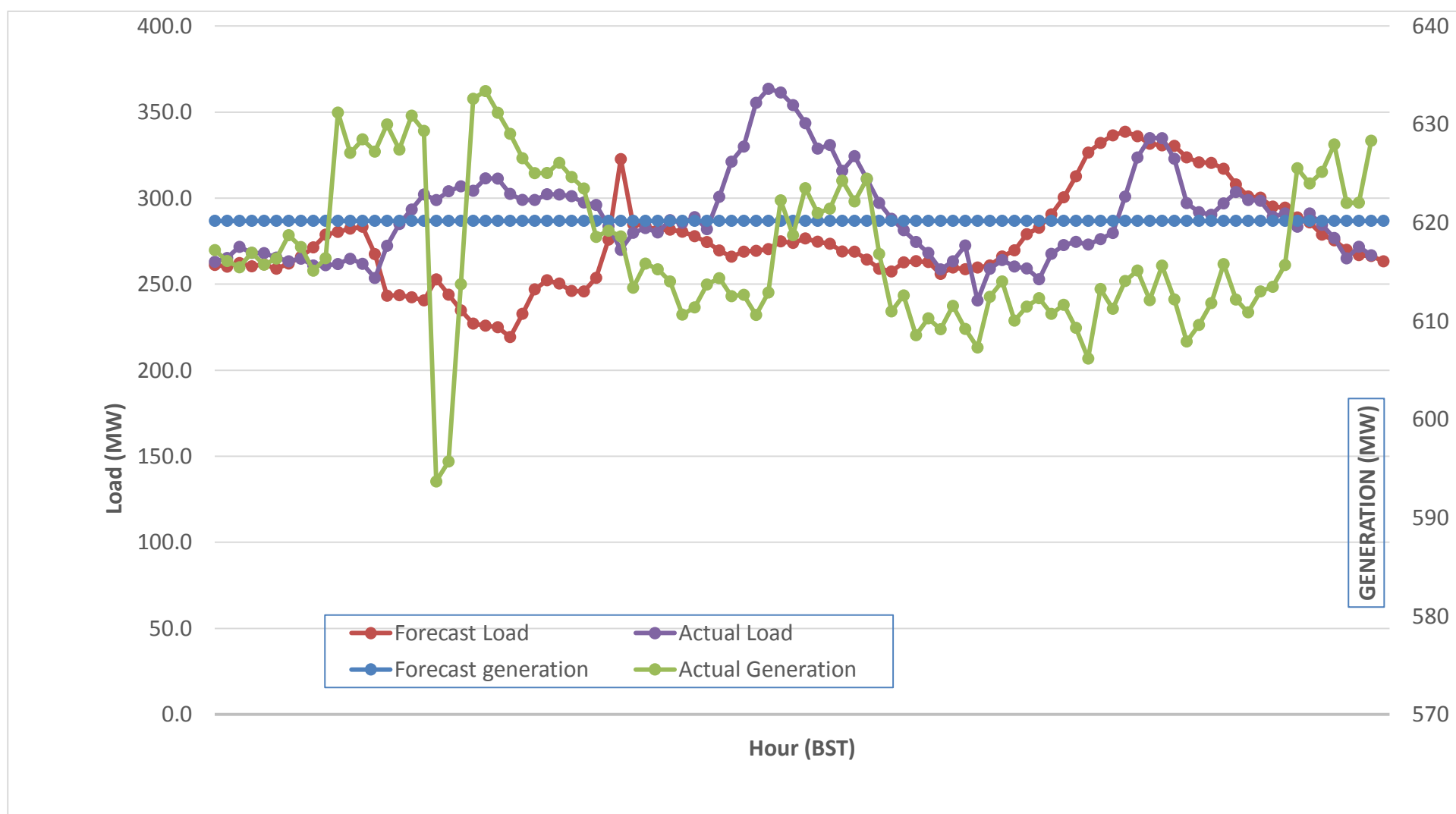
Bhutan Power Corporation Ltd.
 Bhutan Power System Operator
 Thimphu: Bhutan



Message No.: Enter your message number
 From: Shift In-charge, Control Room

Date: 14-Nov-17
 Time: 10:41

Forecast Generation & Load with Actual Generation & Load (13-Nov-2017).



Yours faithfully,
 Pema Lhamo

	MW	Coincidental peak load of Day(Last year):	
Peak Co-incidental Generation(13-Nov-2017).	633.39	267.10 MW	13-Nov-16
Peak Co-incidental Load(13-Nov-2017).	363.59		
		Maximum Load till date:	
		349.25	12-Nov-17

Telephone: +975-02335631; Fax: +975-02335632; Email: bhutansystemoperator@bpc.bt; www.bpc.bt



Bhutan Power Corporation Ltd.
Bhutan Power System Operator
Thimphu: Bhutan

ཕྱག་ལུགས་ལེ་ལས་འཛིན།



Message No.: Enter your message number
From: Shift In-charge, Control Room

Date: 14-Nov-17
Time: 10:41

To
 Managing Director, BPC. Email: gemtshering@bpc.bt
 Director, O&MD, DGPC. Email: director.umd@drukgreen.com
 General Manager, TD, BPC. Email: thinleygyeltshen@bpc.bt
 General Manager, DCSD, BPC. Email: sandeprai@bpc.bt
 General Manager, BPSO, BPC. Email: ujjwaldahal@bpc.bt

Sub: Load Generation Balance Report of Today (14-Nov-2017).

Hours (BST)	Forecast		Actual	
	Generation	Load	Generation	Load
0:00	622.4	262.2	622.4	284.00
0:15	622.4	261.3	622.4	281.30
0:30	622.4	271.4	622.4	280.60
0:45	622.4	275.1	622.4	274.00
1:00	622.4	278.7	622.4	274.10
1:15	622.4	275.4	622.4	268.30
1:30	622.4	277.3	622.4	267.10
1:45	622.4	279.2	622.4	265.00
2:00	622.4	281.2	622.4	265.90
2:15	622.4	285.6	622.4	269.90
2:30	622.4	280.5	622.4	268.30
2:45	622.4	282.2	622.4	264.10
3:00	622.4	274.7	622.4	266.40
3:15	622.4	260.3	622.4	266.40
3:30	622.4	234.8	622.4	267.60
3:45	622.4	226	622.4	269.00
4:00	622.4	213.1	622.4	274.90
4:15	622.4	205.6	622.4	274.40
4:30	622.4	210.9	622.4	285.80
4:45	622.4	208.7	622.4	292.10
5:00	622.4	209.1	622.4	299.40
5:15	622.4	214	622.4	309.50
5:30	622.4	216.2	622.4	321.90
5:45	622.4	233	622.4	335.70
6:00	622.4	235.2	622.4	340.60
6:15	622.4	258.5	622.4	344.20
6:30	622.4	282.8	622.4	345.10
6:45	622.4	281.1	622.4	342.30
7:00	622.4	276.5	622.4	337.20
7:15	622.4	259.1	622.4	338.20
7:30	622.4	252.6	622.4	336.50
7:45	622.4	243.5	622.4	329.60
8:00	622.4	243.7	622.4	325.20
8:15	622.4	273.5	622.4	323.40
8:30	622.4	299.4	622.4	321.20
8:45	622.4	289	622.4	312.50
9:00	622.4	289.6	622.4	304.40

Coincidental peak load of	
294.83 MW	14-Nov-17

Yours faithfully,
 Pema Lhamo

349.25	12-Nov-17
--------	-----------

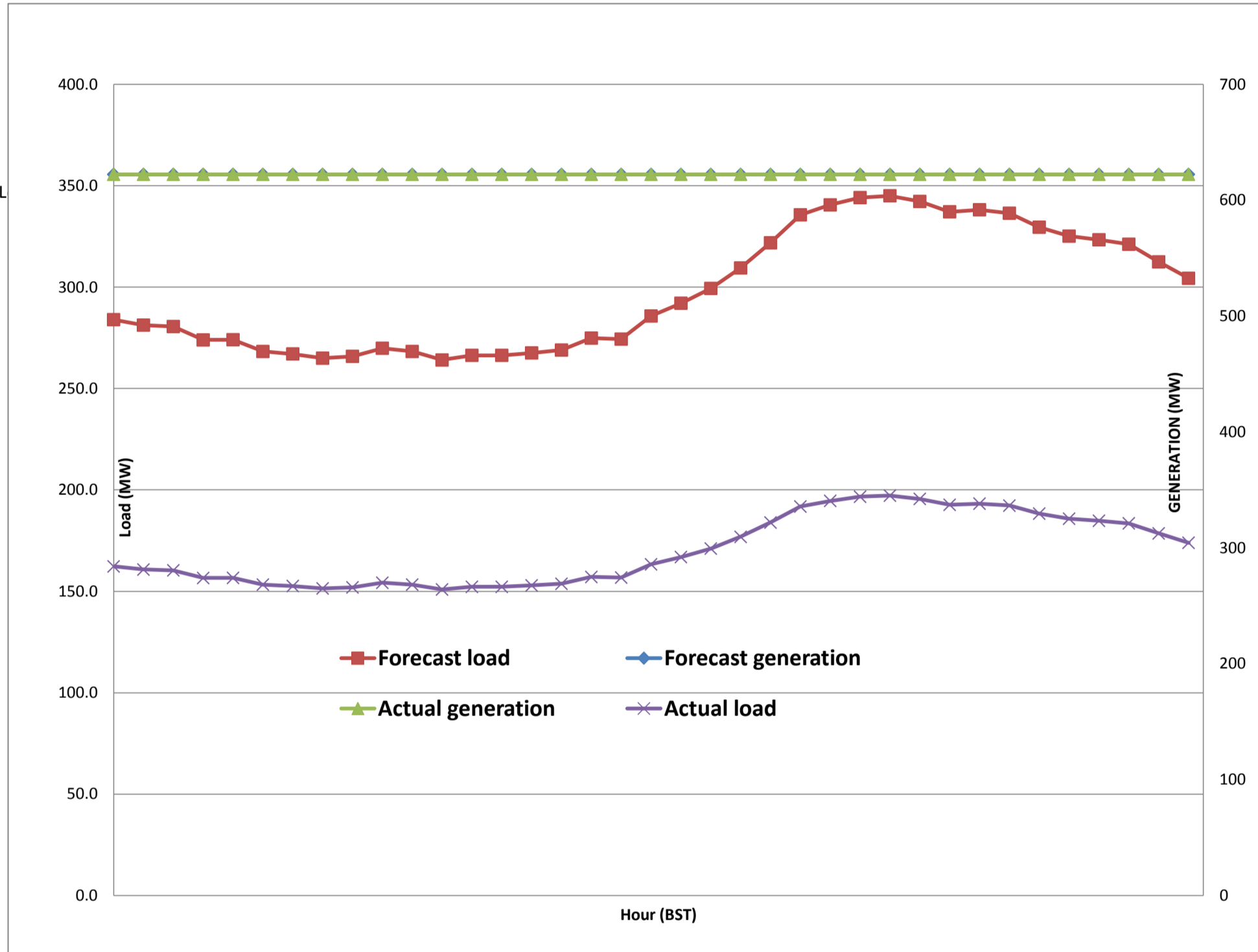
Telephone:



Message No.: Enter your message number
 From: Shift In-charge, Control Room

11/10/2017 10:59 14-Nov-17
 11/10/2017 10:59 10:41

Forecast Generation & Load with Actual Generation & Load of Today from 00:00hrs to 09:00hrs(14-Nov-2017).



Yours faithfully
 Pema Lhamo



འབྲུག་གྲོག་མེ་ལས་འཛུགས།
Bhutan Power Corporation Ltd.
Bhutan Power System Operator
 Thimphu: Bhutan



Message No.: Enter your message number
From: Shift In-charge, Control Room
Date: 14-Nov-17
Time: 10:41

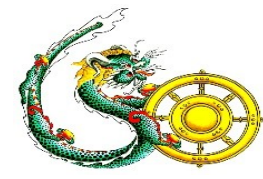
To

Managing Director, BPC. Email: gemtshering@bpc.bt
 Director, O&MD, DGPC. Email: director.umd@drukgreen.com
 General Manager, TD, BPC. Email: ktobgye@bpc.bt
 General Manager, BPSO, BPC. Email: ujjwaldahal@bpc.bt
 Advisor, BPC. Email: bharattamang@bpc.bt

Sub: Load Generation Balance Report of Tomorrow (15-Nov-2017).

Hours (BST)	Forecast		Hours (BST)	Forecast	
	Generation	Load		Generation	Load
0:00	669.30	261.90	4:48	669.3	385.2
0:15	669.30	261.10	2:24	669.3	387.8
0:30	669.30	270.90	0:00	669.3	388.6
0:45	669.30	274.60	7:12	669.3	395.2
1:00	669.30	277.90	16:48	669.3	395.1
1:15	669.30	274.70	0:00	669.3	400.9
1:30	669.30	276.60	2:24	669.3	402
1:45	669.30	278.50	4:48	669.3	404.1
2:00	669.30	280.60	4:48	669.3	403.2
2:15	669.30	284.90	19:12	669.3	399.3
2:30	669.30	279.90	21:36	669.3	400.8
2:45	669.30	281.60	4:48	669.3	405.1
3:00	669.30	274.30	16:48	669.3	402.8
3:15	669.30	260.20	2:24	669.3	402.5
3:30	669.30	235.00	14:24	669.3	401.5
3:45	669.30	226.30	9:36	669.3	400.1
4:00	669.30	213.40	7:12	669.3	394.3
4:15	669.30	206.00	19:12	669.3	394.5
4:30	669.30	211.10	12:00	669.3	383.2
4:45	669.30	208.80	16:48	669.3	377.1
5:00	669.30	209.40	7:12	669.3	369.7
5:15	669.30	214.70	9:36	669.3	359.6
5:30	669.30	216.90	4:48	669.3	347.2
6:45	669.30	233.90	9:36	685.3	349.4
6:00	685.30	236.30	4:48	685.3	344.3
6:15	685.30	259.90	21:36	685.3	340.8
6:30	685.30	284.60	14:24	685.3	339.9
6:45	685.30	282.90	7:12	685.3	342.8
7:00	685.30	278.20	21:36	685.3	347.8
7:15	685.30	260.60	7:12	685.3	346.9
7:30	685.30	253.90	19:12	685.3	349
7:45	685.30	244.10	21:36	685.3	355.8
8:00	685.30	244.00	16:48	685.3	360
8:15	685.30	273.10	21:36	685.3	361.9
8:30	685.30	298.80	0:00	685.3	364.2
8:45	685.30	288.90	9:36	685.3	372.9
9:00	685.30	289.50	19:12	685.3	380.9
9:15	685.30	289.30	2:24	685.3	379.6
9:30	669.30	286.00	12:00	669.3	370.1
9:45	669.30	284.70	16:48	669.3	371.5
10:00	669.30	281.90	16:48	669.3	376.9
10:15	669.30	277.50	0:00	669.3	381.3
10:30	669.30	275.20	7:12	669.3	388.4
10:45	669.30	278.10	2:24	669.3	391.4
11:00	669.30	278.60	16:48	669.3	396.8
11:15	669.30	279.90	9:36	669.3	392.6
11:30	669.30	282.80	14:24	669.3	388.6
11:45	669.30	282.10	4:48	669.3	392.3

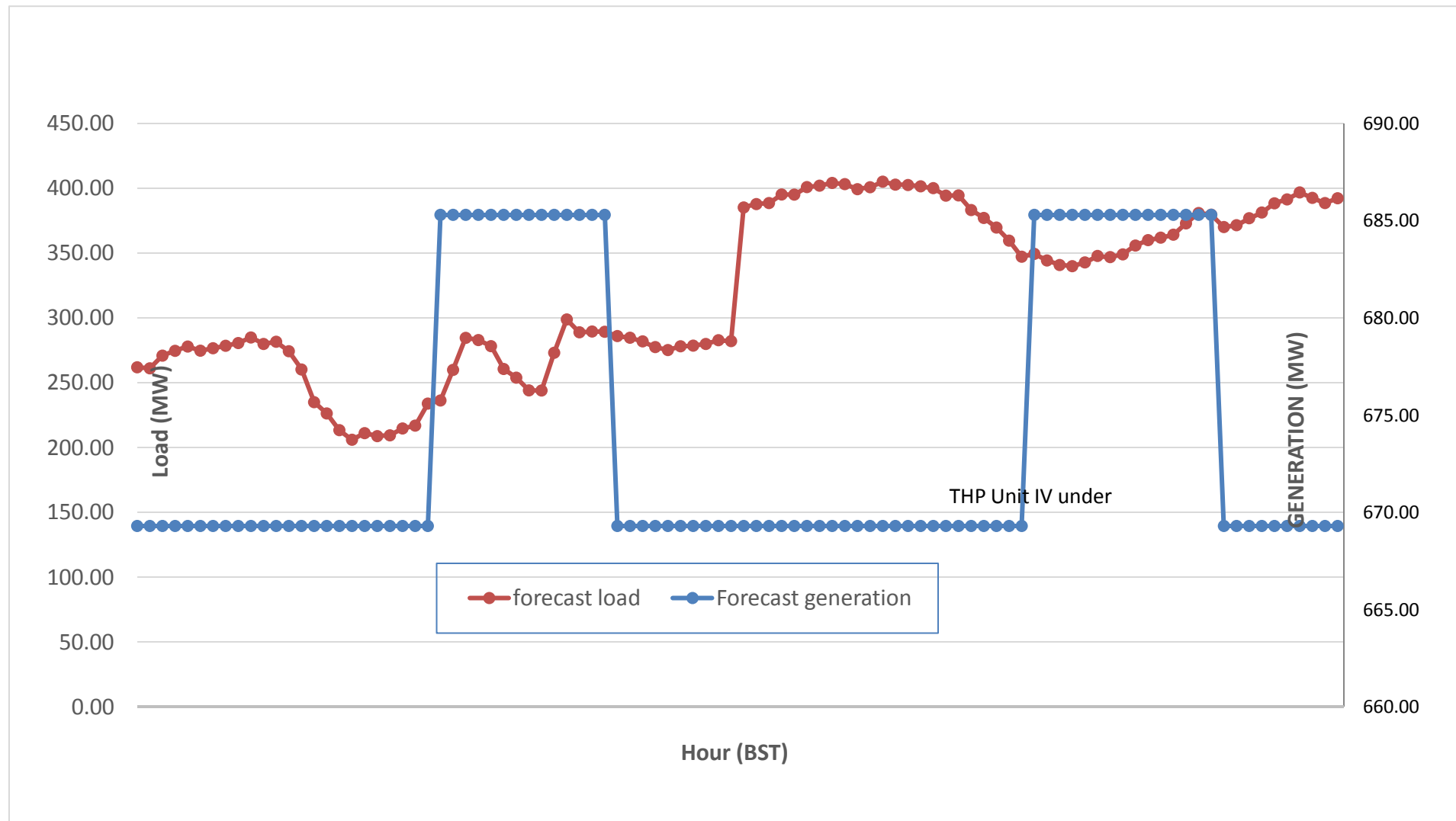
Yours faithfully,
 Pema Lhamo



Message No.: Enter your message number
 From: Shift In-charge, Control Room

Date: 14-Nov-17
 Time: 10:41

Scheduled Generation & Load Forecast for Tomorrow (15-Nov-2017).



Yours faithfully,
 Pema Lhamo

	MW
Scheduled Peak Generation(15-Nov-2017).	376.90
Forecast Peak Load(15-Nov-2017).	300.60