



འབྲུག་གླིང་མེ་ལས་འཛིན།

Bhutan Power Corporation Ltd.
Bhutan Power System Operator
Thimphu: Bhutan



Message No.: Enter your message number
From: Shift In-charge, Control Room

Date: 13-Nov-17
Time: 12:10

To
Managing Director, BPC. Email: gemtshering@bpc.bt
Director, O&MD, DGPC. Email: director.umd@drukgreen.com
General Manager, TD, BPC. Email: ktobgye@bpc.bt
General Manager, DCSD, BPC. Email: sandeeprai@bpc.bt
General Manager, BPSO, BPC. Email: ujjwaldahal@bpc.bt

Sub: Load Generation Balance Report of Yesterday (12-Nov-2017).

Hours (BST)	Forecast		Actual		Hours (BST)	Forecast		Actual	
	Generation	Load	Generation	Load		Generation	Load	Generation	Load
0:00	633.1	256.3	617.2	259.7	12:00	633.1	277.8	623.5	300.09
0:15	633.1	255.6	616.0	263.0	12:15	633.1	276	622.1	297.48
0:30	633.1	259.4	616.1	265.2	12:30	633.1	274.5	618.6	296.07
0:45	633.1	256.2	615.5	269.7	12:45	633.1	269.8	619.2	292.89
1:00	633.1	257.9	616.6	271.7	13:00	633.1	268.9	619.5	283.66
1:15	633.1	256.4	617.0	268.2	13:15	633.1	263.5	618.6	269.96
1:30	633.1	258.6	614.2	267.4	13:30	633.1	263.2	616.9	285.02
1:45	633.1	259.5	615.7	268.1	13:45	633.1	257.8	613.4	279.88
2:00	633.1	265.6	616.4	267.5	14:00	633.1	264.2	615.8	282.56
2:15	633.1	266.8	617.9	265.5	14:15	633.1	265.4	615.4	282.63
2:30	633.1	265.8	618.7	263.3	14:30	633.1	265.4	615.3	280.08
2:45	633.1	269.1	617.5	263.9	14:45	633.1	259.3	614.0	284.44
3:00	633.1	268.8	616.8	264.8	15:00	633.1	265.1	611.9	287.23
3:15	633.1	276.2	615.1	260.9	15:15	633.1	262.8	610.7	285.67
3:30	633.1	272.6	615.9	262.1	15:30	633.1	264.2	612.1	286.66
3:45	633.1	273.8	616.4	261.0	15:45	633.1	266.8	611.4	288.96
4:00	633.1	274.6	631.2	262.9	16:00	633.1	272.2	613.7	289.71
4:15	633.1	274.8	630.5	261.7	16:15	633.1	276.9	612.4	281.98
4:30	633.1	275.9	627.1	264.8	16:30	633.1	284.6	614.4	300.77
4:45	633.1	276.6	628.5	263.6	16:45	633.1	287.7	612.5	318.00
5:00	633.1	275.7	631.6	261.8	17:00	633.1	295.2	612.7	321.20
5:15	633.1	279.1	627.2	253.6	17:15	633.1	301.8	612.7	329.98
5:30	633.1	276.8	628.7	266.6	17:30	633.1	312.3	611.6	340.17
6:45	633.1	265	630.0	272.3	17:45	633.1	324.7	610.6	355.41
6:00	633.1	245	627.4	276.0	18:00	633.1	332	612.9	364.23
6:15	633.1	255.6	628.4	285.0	18:15	633.1	337.1	613.4	363.59
6:30	633.1	261.9	630.9	293.4	18:30	633.1	336.7	622.3	361.41
6:45	633.1	269.6	629.3	298.2	18:45	633.1	334.8	618.7	354.84
7:00	633.1	276.6	633.4	302.2	19:00	633.1	330.6	623.2	354.08
7:15	633.1	273.6	593.7	298.9	19:15	633.1	327.8	626.0	352.63
7:30	633.1	276.1	593.3	299.6	19:30	633.1	327.2	624.8	354.33
7:45	633.1	294.2	595.7	304.0	19:45	633.1	322.1	623.5	343.60
8:00	633.1	308.2	613.8	310.2	20:00	633.1	319.6	621.0	336.39
8:15	633.1	320.1	631.3	306.9	20:15	633.1	319.1	623.3	328.80
8:30	633.1	286.3	632.6	304.3	20:30	633.1	315.2	621.4	330.90
8:45	633.1	283.3	633.4	304.9	20:45	633.1	308.4	624.3	329.32
9:00	633.1	281.7	633.5	311.5	21:00	633.1	301.6	624.8	315.91
9:15	633.1	281.7	631.2	311.4	21:15	633.1	301.4	622.2	324.43
9:30	633.1	280.3	629.1	305.4	21:30	633.1	295.8	623.4	309.16
9:45	633.1	280.6	629.0	302.5	21:45	633.1	293.6	624.5	311.14
10:00	633.1	277.1	626.6	301.4	22:00	633.1	285.7	616.8	307.17
10:15	633.1	274.6	695.4	299.0	22:15	633.1	283.9	613.5	297.23
10:30	633.1	269.5	625.0	299.0	22:30	633.1	277.2	611.0	288.01
10:45	633.1	270.1	625.1	295.2	22:45	633.1	273.1	612.6	284.11
11:00	633.1	273.2	622.7	302.3	23:00	633.1	268.3	608.7	281.38
11:15	633.1	272.1	626.1	302.1	23:15	633.1	266.9	608.6	274.55
11:30	633.1	275.8	624.9	304.8	23:30	633.1	266.3	613.3	269.84
11:45	633.1	275	624.7	301.2	23:45	633.1	264.6	610.3	268.20

Yours faithfully
Pema Lhamo

Coincidental peak load of Day(Last year):	
291.14 MW	12-Nov-16
Maximum Load till date:	
349.25	12-Nov-17



འབྲུག་རྒྱལ་ཁོ་ལས་འཛིན།

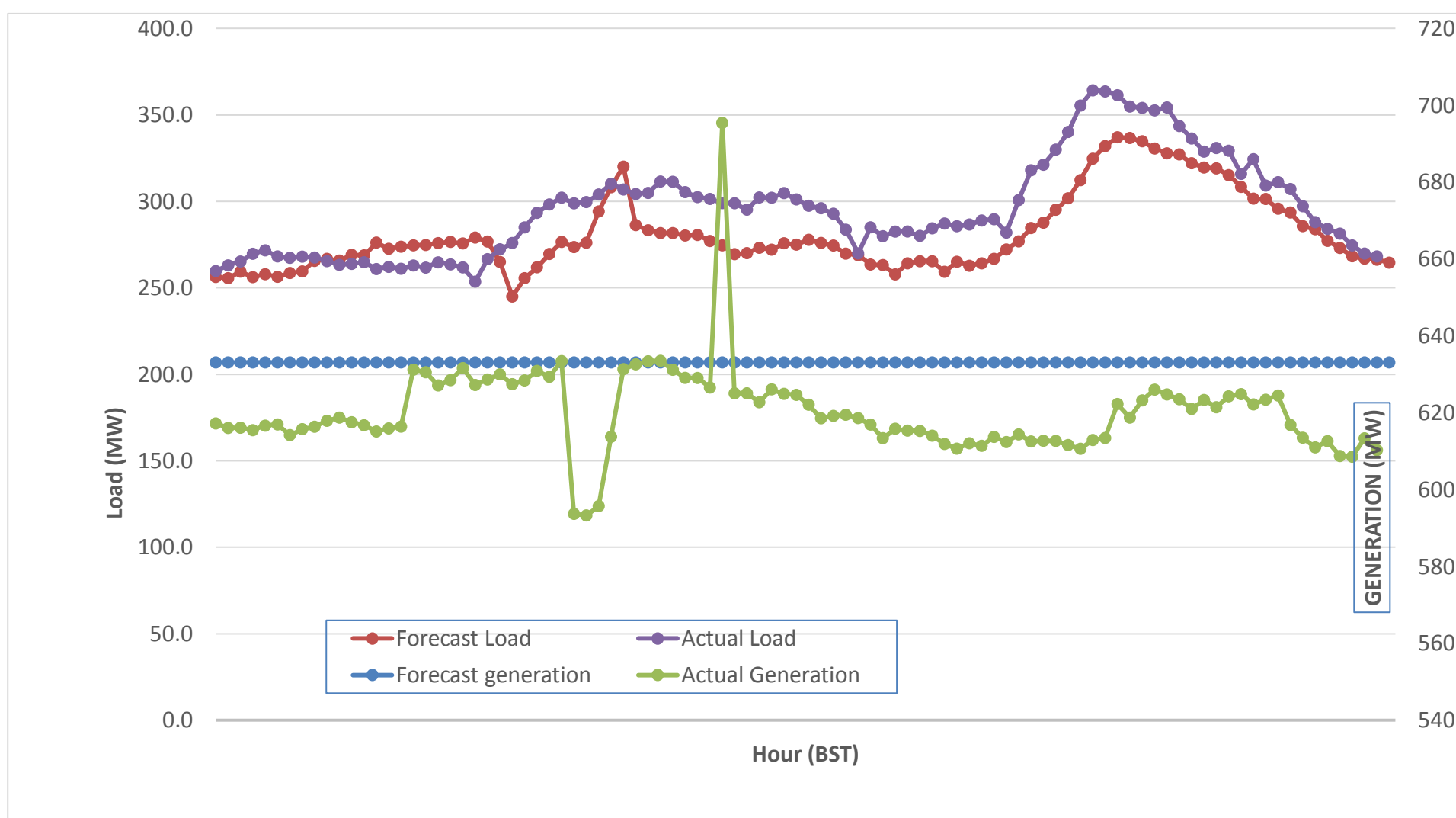
Bhutan Power Corporation Ltd.
 Bhutan Power System Operator
 Thimphu: Bhutan



Message No.: Enter your message number
 From: Shift In-charge, Control Room

Date: 13-Nov-17
 Time: 12:10

Forecast Generation & Load with Actual Generation & Load (12-Nov-2017).



Yours faithfully,
 Pema Lhamo

	MW	Coincidental peak load of Day(Last year):	
Peak Co-incidental Generation(12-Nov-2017).	695.44	291.14 MW	12-Nov-16
Peak Co-incidental Load(12-Nov-2017).	364.23		
		Maximum Load till date:	
		349.25	12-Nov-17

Telephone: +975-02335631; Fax: +975-02335632; Email: bhutansystemoperator@bpc.bt; www.bpc.bt



འབྲུག་གླིང་མི་ལས་འཛིན།

Bhutan Power Corporation Ltd.
Bhutan Power System Operator
Thimphu: Bhutan



Message No.: Enter your message number
From: Shift In-charge, Control Room

Date: 13-Nov-17
Time: 12:10

To
Managing Director, BPC. Email: gemtshering@bpc.bt
Director, O&MD, DGPC. Email: director.omid@drukgreen.com
General Manager, TD, BPC. Email: thinleygyeltshen@bpc.bt
General Manager, DCSD, BPC. Email: sandeprai@bpc.bt
General Manager, BPSO, BPC. Email: ujjwaldahal@bpc.bt

Sub: Load Generation Balance Report of Today (13-Nov-2017).

Hours (BST)	Forecast		Actual	
	Generation	Load	Generation	Load
0:00	620.2	261.2	617.2	259.72
0:15	620.2	260.2	616.0	263.01
0:30	620.2	262.3	616.1	265.23
0:45	620.2	260.4	615.5	269.71
1:00	620.2	261.5	616.6	271.70
1:15	620.2	259	617.0	268.20
1:30	620.2	262	614.2	267.37
1:45	620.2	265.9	615.7	268.06
2:00	620.2	271.4	616.4	267.55
2:15	620.2	278.8	617.9	265.45
2:30	620.2	280.4	618.7	263.30
2:45	620.2	282.3	617.5	263.88
3:00	620.2	283.4	616.8	264.82
3:15	620.2	267.5	615.1	260.88
3:30	620.2	243.3	615.9	262.14
3:45	620.2	243.6	616.4	261.04
4:00	620.2	242.4	631.2	262.95
4:15	620.2	240.6	630.5	261.71
4:30	620.2	252.8	627.1	264.76
4:45	620.2	243.9	628.5	263.58
5:00	620.2	234.8	631.6	261.84
5:15	620.2	227.1	627.2	253.60
5:30	620.2	225.9	628.7	266.62
5:45	620.2	225	630.0	272.32
6:00	620.2	219.3	627.4	275.96
6:15	620.2	232.8	628.4	284.98
6:30	620.2	247	630.9	293.39
6:45	620.2	252.3	629.3	298.24
7:00	620.2	250.4	633.4	302.17
7:15	620.2	246.1	593.7	298.90
7:30	620.2	245.8	593.3	299.63
7:45	620.2	253.7	595.7	304.02
8:00	620.2	275.9	613.8	310.23
8:15	620.2	322.7	631.3	306.88
8:30	620.2	284.9	632.6	304.30
8:45	620.2	284	633.4	304.90
9:00	620.2	281.4	633.5	311.50

Coincidental peak load of Day(Last year):	
267.10 MW	13-Nov-17
288.91 MW	
349.25	12-Nov-17

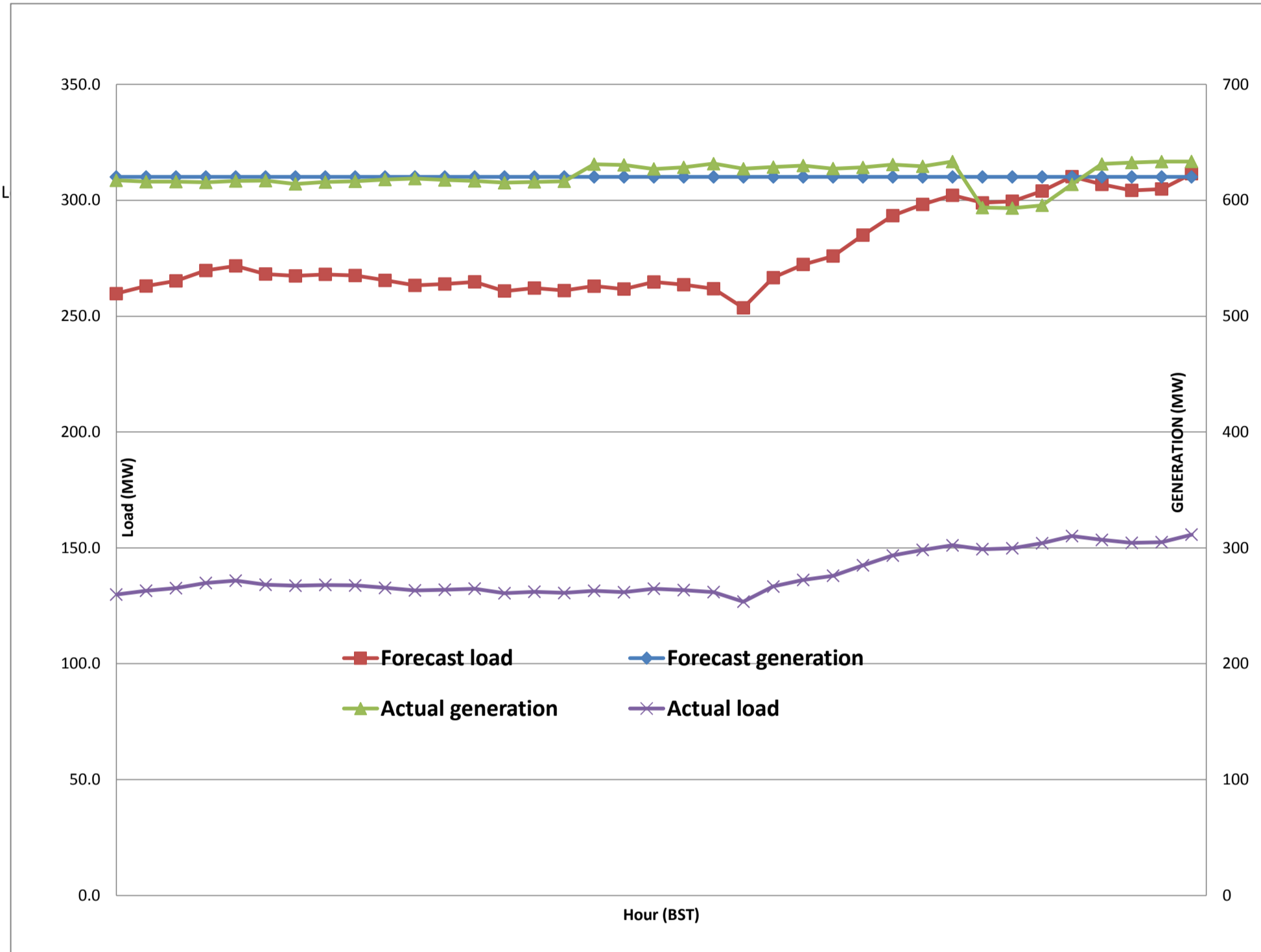
Yours faithfully,
Pema Lhamo



Message No.: Enter your message number
 From: Shift In-charge, Control Room

11/10/2017 10:59 13-Nov-17
 11/10/2017 10:59 12:10

Forecast Generation & Load with Actual Generation & Load of Today from 00:00hrs to 09:00hrs(13-Nov-2017).



Yours faithfully
 Pema Lhamo



འབྲུག་གྲོག་ལས་ལཱ་ལེན།
Bhutan Power Corporation Ltd.
Bhutan Power System Operator
 Thimphu: Bhutan



Message No.: Enter your message number
From: Shift In-charge, Control Room
Date: 13-Nov-17
Time: 12:10

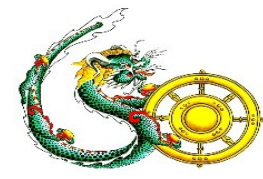
To

Managing Director, BPC. Email: gemtshering@bpc.bt
 Director, O&MD, DGPC. Email: director.umd@drukgreen.com
 General Manager, TD, BPC. Email: ktobgye@bpc.bt
 General Manager, BPSO, BPC. Email: ujjwaldahal@bpc.bt
 Advisor, BPC. Email: bharattamang@bpc.bt

Sub: Load Generation Balance Report of Tomorrow (14-Nov-2017).

Hours (BST)	Forecast		Hours (BST)	Forecast	
	Generation	Load		Generation	Load
0:00	622.4	262.20	4:48	622.4	284
0:15	622.4	261.30	2:24	622.4	281.3
0:30	622.4	271.40	0:00	622.4	280.6
0:45	622.4	275.10	7:12	622.4	274
1:00	622.4	278.70	16:48	622.4	274.1
1:15	622.4	275.40	0:00	622.4	268.3
1:30	622.4	277.30	2:24	622.4	267.1
1:45	622.4	279.20	4:48	622.4	265
2:00	622.4	281.20	4:48	622.4	265.9
2:15	622.4	285.60	19:12	622.4	269.9
2:30	622.4	280.50	21:36	622.4	268.3
2:45	622.4	282.20	4:48	622.4	264.1
3:00	622.4	274.70	16:48	622.4	266.4
3:15	622.4	260.30	2:24	622.4	266.4
3:30	622.4	234.80	14:24	622.4	267.6
3:45	622.4	226.00	9:36	622.4	269
4:00	622.4	213.10	7:12	622.4	274.9
4:15	622.4	205.60	19:12	622.4	274.4
4:30	622.4	210.90	12:00	622.4	285.8
4:45	622.4	208.70	16:48	622.4	292.1
5:00	622.4	209.10	7:12	622.4	299.4
5:15	622.4	214.00	9:36	622.4	309.5
5:30	622.4	216.20	4:48	622.4	321.9
6:45	622.4	233.00	9:36	622.4	335.7
6:00	622.4	235.20	4:48	622.4	340.6
6:15	622.4	258.50	21:36	622.4	344.2
6:30	622.4	282.80	14:24	622.4	345.1
6:45	622.4	281.10	7:12	622.4	342.3
7:00	622.4	276.50	21:36	622.4	337.2
7:15	622.4	259.10	7:12	622.4	338.2
7:30	622.4	252.60	19:12	622.4	336.5
7:45	622.4	243.50	21:36	622.4	329.6
8:00	622.4	243.70	16:48	622.4	325.2
8:15	622.4	273.50	21:36	622.4	323.4
8:30	622.4	299.40	0:00	622.4	321.2
8:45	622.4	289.00	9:36	622.4	312.5
9:00	622.4	289.60	19:12	622.4	304.4
9:15	622.4	289.30	2:24	622.4	305.7
9:30	622.4	285.90	12:00	622.4	299.2
9:45	622.4	284.70	16:48	622.4	297.8
10:00	622.4	281.70	16:48	622.4	292.5
10:15	622.4	277.40	0:00	622.4	288.1
10:30	622.4	275.10	7:12	622.4	281
10:45	622.4	278.30	2:24	622.4	278.1
11:00	622.4	278.70	16:48	622.4	272.6
11:15	622.4	280.00	9:36	622.4	277.3
11:30	622.4	282.80	14:24	622.4	281.5
11:45	622.4	282.20	4:48	622.4	277.6

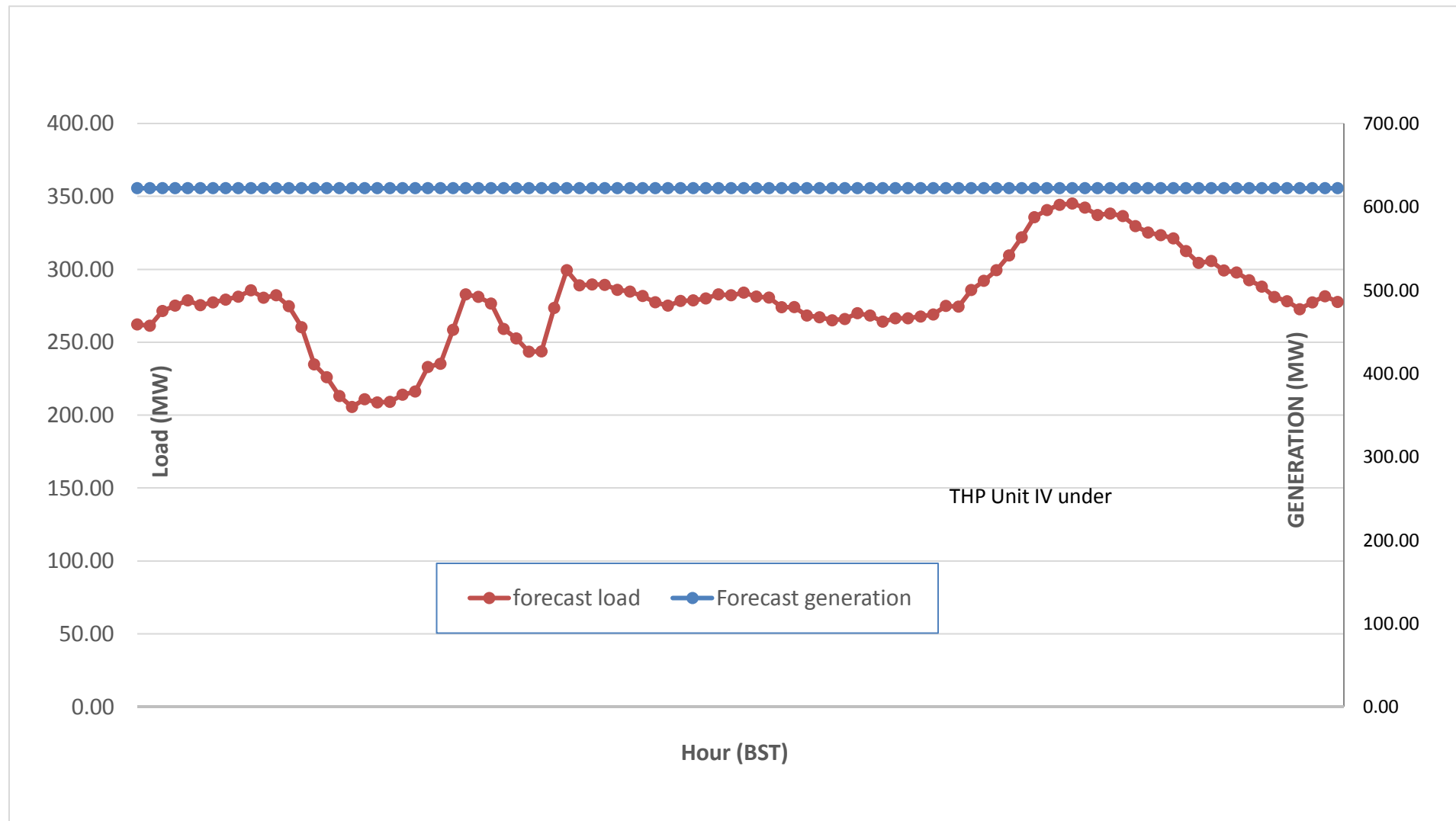
Yours faithfully,
 Pema Lhamo



Message No.: Enter your message number
 From: Shift In-charge, Control Room

Date: 13-Nov-17
 Time: 12:10

Scheduled Generation & Load Forecast for Tomorrow (14-Nov-2017).



Yours faithfully,
 Pema Lhamo

	MW
Scheduled Peak Generation(14-Nov-2017).	376.90
Forecast Peak Load(14-Nov-2017).	300.60