



འབྲུག་གླིང་མེ་ལས་འཛིན།

Bhutan Power Corporation Ltd.  
Bhutan Power System Operator  
Thimphu: Bhutan



Message No.: Enter your message number  
From: Shift In-charge, Control Room

Date: 10-Nov-17  
Time: 10:59

To  
Managing Director, BPC. Email: gemtshering@bpc.bt  
Director, O&MD, DGPC. Email: director.omb@drukgreen.com  
General Manager, TD, BPC. Email: ktobgye@bpc.bt  
General Manager, DCSD, BPC. Email: sandeeprai@bpc.bt  
General Manager, BPSO, BPC. Email: ujjwaldahal@bpc.bt

Sub: **Load Generation Balance Report of Yesterday (09-Nov-2017).**

Hours (BST)	Forecast		Actual		Hours (BST)	Forecast		Actual	
	Generation	Load	Generation	Load		Generation	Load	Generation	Load
0:00	675.3	250.4	674.3	268.9	12:00	678.2	263.2	678.5	286.70
0:15	675.3	249.1	672.7	265.6	12:15	678.2	258.7	681.4	283.73
0:30	678.2	249.7	665.7	267.9	12:30	678.2	259.2	621.8	283.77
0:45	678.2	249.9	663.7	266.2	12:45	678.2	252.7	618.9	267.76
1:00	678.2	247.4	662.6	269.0	13:00	678.2	253.3	618.4	278.23
1:15	678.2	244.4	663.8	267.5	13:15	678.2	252	621.5	272.73
1:30	678.2	246.7	662.4	268.9	13:30	678.2	249.1	624.5	278.22
1:45	678.2	247.1	663.9	263.6	13:45	678.2	243.7	624.3	275.43
2:00	678.2	248.9	666.9	263.8	14:00	678.2	246.5	625.9	275.80
2:15	678.2	247.9	663.5	264.2	14:15	678.2	248.2	617.9	272.72
2:30	678.2	247.4	664.6	260.8	14:30	678.2	250.4	632.5	275.91
2:45	678.2	248.3	665.7	273.1	14:45	678.2	244	634.0	261.52
3:00	678.2	250.8	666.7	267.1	15:00	678.2	246.6	627.9	270.20
3:15	678.2	249.9	666.5	266.6	15:15	678.2	248.3	623.0	274.59
3:30	678.2	248.5	652.5	266.8	15:30	678.2	249.3	626.0	277.88
3:45	678.2	243.6	625.0	267.1	15:45	678.2	251.3	623.8	280.45
4:00	678.2	246.8	625.4	271.2	16:00	678.2	252.5	622.9	284.14
4:15	678.2	252.5	626.5	275.8	16:15	678.2	259.9	621.6	290.84
4:30	678.2	256.3	627.7	279.8	16:30	678.2	268.2	619.6	297.98
4:45	678.2	256.1	625.9	276.6	16:45	678.2	271.7	618.0	299.58
5:00	678.2	262.6	627.0	280.0	17:00	678.2	280.1	617.0	307.29
5:15	678.2	267	628.7	277.7	17:15	678.2	289.5	632.9	312.23
5:30	678.2	270	626.3	281.1	17:30	678.2	300.1	648.6	322.97
6:45	678.2	282	626.3	295.5	17:45	681.2	312	630.9	337.08
6:00	691.2	285	626.6	299.6	18:00	691.2	319	638.6	338.55
6:15	691.2	304.4	625.2	301.2	18:15	691.2	325.5	644.4	341.69
6:30	691.2	319.7	641.3	334.0	18:30	691.2	324.6	646.9	335.81
6:45	691.2	336.5	640.8	334.0	18:45	691.2	322.9	645.6	334.90
7:00	691.2	327.1	642.8	343.8	19:00	691.2	322.3	645.9	337.42
7:15	691.2	316.3	641.2	338.3	19:15	691.2	321.4	644.3	329.98
7:30	691.2	315.5	642.6	337.1	19:30	691.2	317.2	646.3	333.54
7:45	691.2	297.5	651.7	326.5	19:45	691.2	312.2	649.0	324.26
8:00	691.2	288.7	623.2	320.0	20:00	691.2	309.7	645.8	321.92
8:15	691.2	276.7	665.4	310.7	20:15	678.2	307	644.0	321.40
8:30	678.2	271.6	668.4	307.4	20:30	678.2	303	637.2	321.91
8:45	678.2	270.8	653.9	284.4	20:45	678.2	295.8	637.1	313.05
9:00	678.2	268.7	648.8	295.2	21:00	678.2	287.3	664.6	305.97
9:15	678.2	268.1	647.1	287.6	21:15	678.2	290	650.6	300.72
9:30	678.2	264.7	658.4	289.7	21:30	678.2	285.8	633.6	302.37
9:45	678.2	266.4	662.4	289.3	21:45	678.2	280.6	629.5	294.64
10:00	678.2	269	720.7	286.2	22:00	678.2	274.1	638.6	296.06
10:15	678.2	263.8	720.0	294.9	22:15	678.2	269.7	629.6	288.05
10:30	678.2	261.7	708.8	289.6	22:30	678.2	265.5	627.4	279.72
10:45	678.2	261	663.8	283.7	22:45	678.2	265	629.2	278.30
11:00	678.2	262	694.6	284.8	23:00	678.2	262.2	629.0	258.66
11:15	678.2	260.6	679.4	283.6	23:15	678.2	260	640.2	269.99
11:30	678.2	262.1	680.0	283.8	23:30	678.2	256.8	640.6	268.70
11:45	678.2	260.7	678.4	285.8	23:45	678.2	254.8	643.8	266.37

Yours faithfully  
Kinley Wangmo

Coincidental peak load of Day(Last year):	
288.91 MW	9-Nov-16
Maximum Load till date:	
344.02 MW	18-Mar-17



འབྲུག་རྒྱལ་ཁོ་ལས་འཛིན།

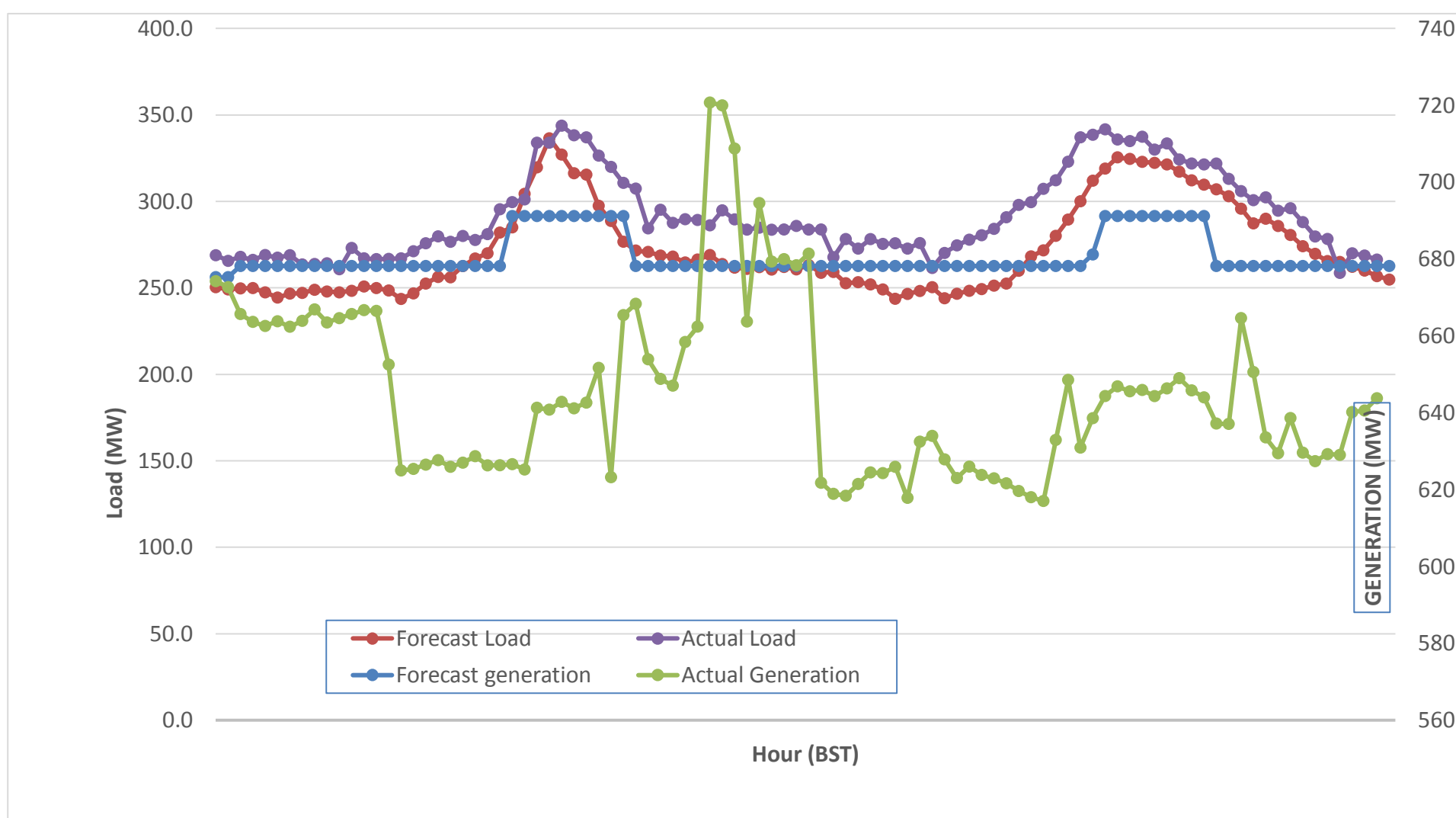
Bhutan Power Corporation Ltd.  
 Bhutan Power System Operator  
 Thimphu: Bhutan



Message No.: Enter your message number  
 From: Shift In-charge, Control Room

Date: 10-Nov-17  
 Time: 10:59

Forecast Generation & Load with Actual Generation & Load (09-Nov-2017).



Yours faithfully,  
 Kinley Wangmo

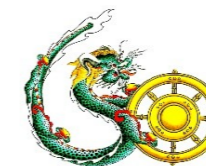
	MW	Coincidental peak load of Day(Last year):	
Peak Co-incident Generation(09-Nov-2017).	720.73	288.91 MW	9-Nov-16
Peak Co-incident Load(09-Nov-2017).	343.81		
		Maximum Load till date:	
		344.02 MW	18-Mar-17

Telephone: +975-02335631; Fax: +975-02335632; Email: bhutansystemoperator@bpc.bt; www.bpc.bt



འབྲུག་གྲོག་མེ་ལས་འཛིན།

Bhutan Power Corporation Ltd.  
Bhutan Power System Operator  
Thimphu: Bhutan



Message No.: Enter your message number  
From: Shift In-charge, Control Room

Date: 10-Nov-17  
Time: 10:59

To  
Managing Director, BPC. Email: gemtshering@bpc.bt  
Director, O&MD, DGPC. Email: director.omid@drukgreen.com  
General Manager, TD, BPC. Email: thinleygyeltshen@bpc.bt  
General Manager, DCSD, BPC. Email: sandeprai@bpc.bt  
General Manager, BPSO, BPC. Email: ujjwaldahal@bpc.bt

Sub: Load Generation Balance Report of Today (10-Nov-2017).

Hours (BST)	Forecast		Actual	
	Generation	Load	Generation	Load
0:00	654.4	251.3	642.4	260.89
0:15	654.4	250.6	641.9	260.02
0:30	654.4	252.7	641.7	264.70
0:45	654.4	252.7	639.2	264.62
1:00	654.4	250.6	643.3	264.70
1:15	654.4	249.3	665.1	259.94
1:30	654.4	249.7	662.0	260.18
1:45	654.4	249.5	654.7	257.16
2:00	654.4	251.3	670.6	263.75
2:15	654.4	250.3	669.8	256.55
2:30	654.4	248.8	671.4	259.02
2:45	654.4	248.3	676.4	260.74
3:00	654.4	252.5	677.7	248.80
3:15	654.4	251.1	676.2	260.16
3:30	654.4	252.1	655.8	259.56
3:45	654.4	247	659.5	261.48
4:00	654.4	250.7	658.6	260.20
4:15	654.4	255.7	660.7	261.17
4:30	654.4	259.3	659.7	264.74
4:45	654.4	261.9	663.3	268.56
5:00	654.4	266.3	662.0	272.20
5:15	654.4	276.6	663.3	272.09
5:30	654.4	284.2	679.3	273.24
5:45	654.4	298.3	679.8	274.03
6:00	661	300.7	679.7	276.06
6:15	661	325.4	678.5	288.80
6:30	661	340.7	678.9	298.15
6:45	661	354.3	678.3	300.27
7:00	661	349.3	678.4	304.67
7:15	661	335.8	678.9	306.27
7:30	661	335.2	675.7	305.36
7:45	661	314.4	675.6	303.09
8:00	661	306.1	677.5	296.71
8:15	661	283.1	635.9	295.94
8:30	661	279.5	636.3	291.09
8:45	661	278.3	635.4	288.45
9:00	654.4	276.2	635.9	282.71

Coincidental peak load of Day(Last year):	
288.71 MW	10-Nov-17
288.91 MW	
344.02 MW	18-Mar-17

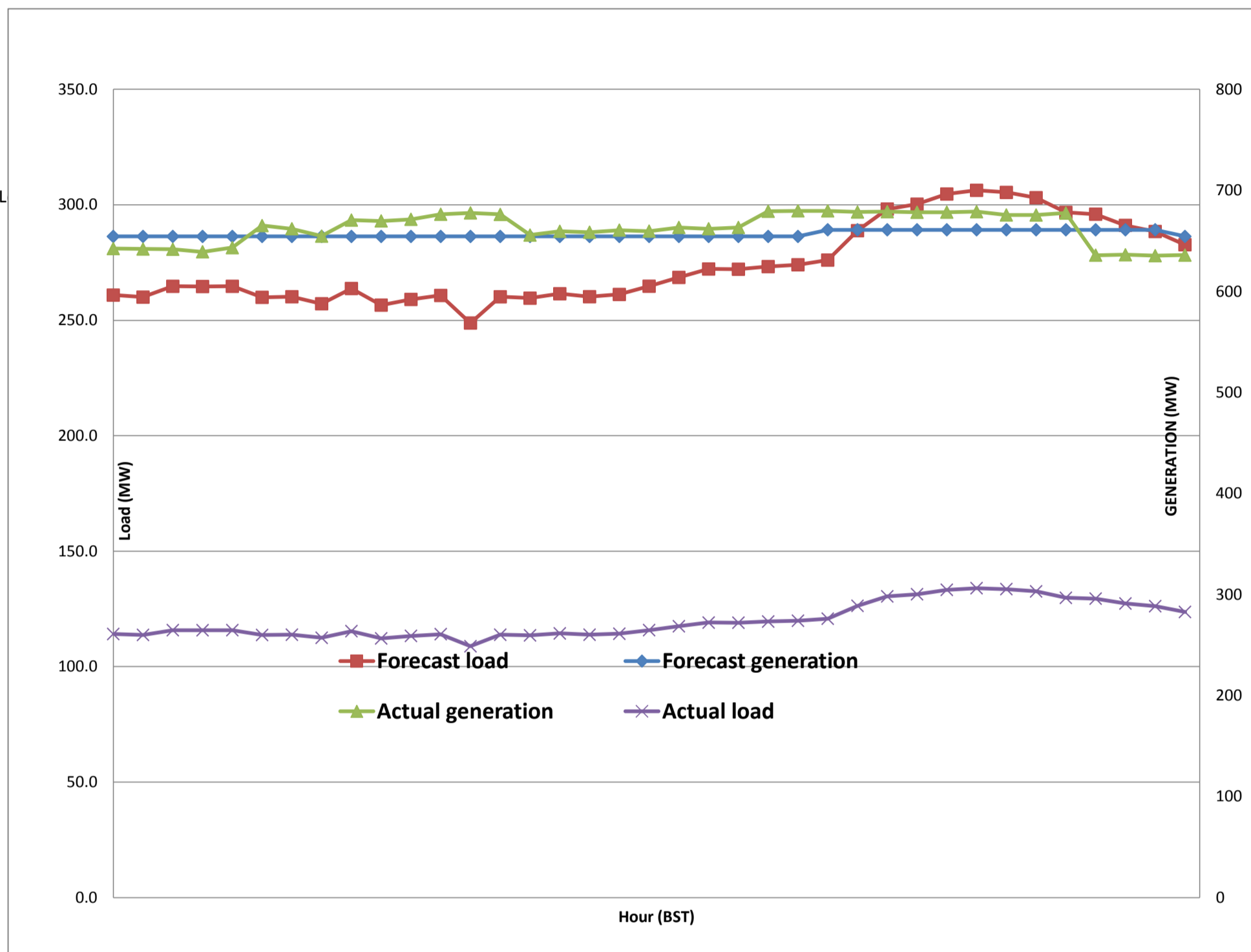
Yours faithfully,  
Kinley Wangmo



Message No.: Enter your message number  
 From: Shift In-charge, Control Room

11/10/2017 10:59 10-Nov-17  
 11/10/2017 10:59 10:59

Forecast Generation & Load with Actual Generation & Load of Today from 00:00hrs to 09:00hrs(10-Nov-2017).



Yours faithfully  
 Kinley Wangmo



འབྲུག་གྲོག་ལས་ཁུངས་ལྷན་ཁག།  
**Bhutan Power Corporation Ltd.**  
**Bhutan Power System Operator**  
 Thimphu: Bhutan



**Message No.:** Enter your message number  
**From:** Shift In-charge, Control Room  
**Date:** 10-Nov-17  
**Time:** 10:59

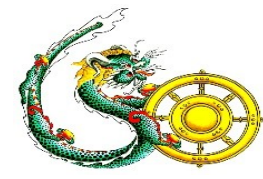
**To**

Managing Director, BPC. Email: gemtshering@bpc.bt  
 Director, O&MD, DGPC. Email: director.umd@drukgreen.com  
 General Manager, TD, BPC. Email: ktobgye@bpc.bt  
 General Manager, BPSO, BPC. Email: ujjwaldahal@bpc.bt  
 Advisor, BPC. Email: bharattamang@bpc.bt

**Sub:** Load Generation Balance Report of Tomorrow (11-Nov-2017).

Hours (BST)	Forecast		Hours (BST)	Forecast	
	Generation	Load		Generation	Load
0:00	625.1	256.50	12:00	625.1	277.6
0:15	625.1	254.70	12:15	625.1	273.7
0:30	625.1	257.60	12:30	625.1	272.2
0:45	625.1	254.90	12:45	625.1	264.7
1:00	625.1	256.50	13:00	625.1	265.9
1:15	625.1	255.00	13:15	625.1	262.7
1:30	625.1	255.90	13:30	625.1	264
1:45	625.1	255.20	13:45	625.1	255.7
2:00	625.1	253.80	14:00	625.1	261.1
2:15	625.1	255.20	14:15	625.1	260.8
2:30	625.1	252.10	14:30	625.1	261.9
2:45	625.1	253.40	14:45	625.1	255.1
3:00	625.1	257.80	15:00	625.1	261
3:15	625.1	263.60	15:15	625.1	257.9
3:30	625.1	262.10	15:30	625.1	262.2
3:45	625.1	266.00	15:45	625.1	264.7
4:00	625.1	271.20	16:00	625.1	269
4:15	625.1	275.00	16:15	625.1	273.6
4:30	625.1	279.40	16:30	625.1	281.2
4:45	625.1	281.80	16:45	625.1	284.9
5:00	625.1	286.70	17:00	625.1	291.7
5:15	625.1	294.30	17:15	625.1	300.5
5:30	625.1	299.40	17:30	625.1	309.9
6:00	625.1	305.10	17:45	625.1	322.8
6:15	632.1	298.60	18:00	632.1	328.7
6:30	632.1	318.10	18:15	632.1	335.2
6:45	632.1	331.40	18:30	632.1	333
7:00	632.1	343.00	18:45	632.1	329.5
7:15	632.1	343.20	19:00	632.1	326.7
7:30	632.1	333.90	19:15	632.1	323.4
7:45	632.1	335.60	19:30	632.1	323.5
8:00	632.1	335.70	19:45	632.1	317
8:15	632.1	325.60	20:00	625.1	314.1
8:30	632.1	308.60	20:15	625.1	312.7
8:45	632.1	285.90	20:30	625.1	307.5
9:00	625.1	280.70	20:45	625.1	302.8
9:15	625.1	281.00	21:00	625.1	295
9:30	625.1	281.00	21:15	625.1	293.7
9:45	625.1	279.30	21:30	625.1	289.9
10:00	625.1	280.20	21:45	625.1	287
10:15	625.1	276.20	22:00	625.1	280.5
10:30	625.1	273.00	22:15	625.1	277.3
10:45	625.1	272.70	22:30	625.1	272.6
11:00	625.1	273.50	22:45	625.1	268.8
11:15	625.1	274.00	23:00	625.1	263.1
11:30	625.1	272.90	23:15	625.1	264.3
11:45	625.1	275.90	23:30	625.1	262.8
		275.20	23:45	625.1	260.3

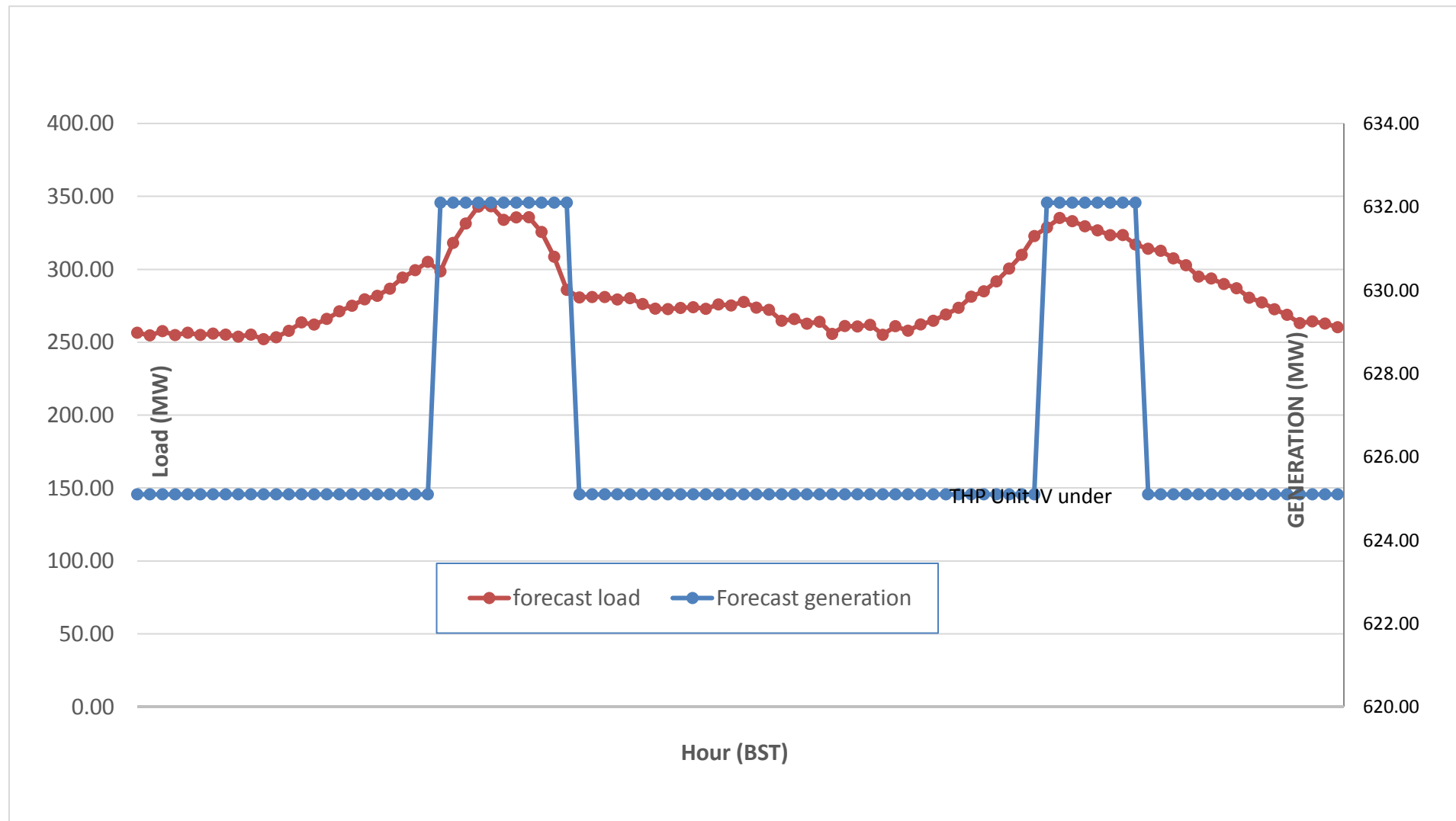
Yours faithfully,  
 Kinley Wangmo



Message No.: Enter your message number  
 From: Shift In-charge, Control Room

Date: 10-Nov-17  
 Time: 10:59

**Scheduled Generation & Load Forecast for Tomorrow (11-Nov-2017).**



Yours faithfully,  
 Kinley Wangmo

	MW
Scheduled Peak Generation(11-Nov-2017).	376.90
Forecast Peak Load(11-Nov-2017).	300.60