



འབྲུག་གློག་ཐོ་ལས་འཛིན།

Bhutan Power Corporation Ltd.  
Bhutan Power System Operator  
Thimphu: Bhutan



Message No.: Enter your message number  
From: Shift In-charge, Control Room

Date: 9-Nov-17  
Time: 11:31

To  
Managing Director, BPC. Email: gemtshering@bpc.bt  
Director, O&MD, DGPC. Email: director.umd@drukgreen.com  
General Manager, TD, BPC. Email: ktobgye@bpc.bt  
General Manager, DCSD, BPC. Email: sandeeprai@bpc.bt  
General Manager, BPSO, BPC. Email: ujjwaldahal@bpc.bt

Sub: **Load Generation Balance Report of Yesterday (08-Nov-2017).**

Hours (BST)	Forecast		Actual		Hours (BST)	Forecast		Actual	
	Generation	Load	Generation	Load		Generation	Load	Generation	Load
0:00	684.2	245.4	670.1	252.1	12:00	684.2	258.6	632.8	302.00
0:15	684.2	243.3	667.1	255.4	12:15	684.2	257.8	673.0	305.27
0:30	684.2	245.4	669.0	256.3	12:30	684.2	257.3	672.4	295.34
0:45	684.2	244.9	668.7	260.7	12:45	684.2	251.2	673.0	281.03
1:00	684.2	244.9	666.2	259.3	13:00	684.2	253.3	673.7	281.53
1:15	684.2	242.1	667.1	264.0	13:15	684.2	250.7	667.6	274.74
1:30	684.2	243.1	667.0	255.2	13:30	684.2	249.6	677.1	277.84
1:45	684.2	246.8	682.5	256.7	13:45	684.2	246.1	675.6	283.79
2:00	684.2	246.4	685.0	257.0	14:00	684.2	249.2	680.2	281.80
2:15	684.2	246.5	667.4	257.6	14:15	684.2	250.3	680.2	276.95
2:30	684.2	246.6	645.3	256.6	14:30	684.2	251.1	678.4	284.28
2:45	684.2	247.7	657.2	249.3	14:45	684.2	242.9	679.0	270.53
3:00	684.2	248.5	665.2	254.4	15:00	684.2	245.6	678.0	282.83
3:15	684.2	247.5	656.4	254.7	15:15	684.2	247.5	678.8	270.30
3:30	684.2	248.9	664.5	262.6	15:30	684.2	251.9	681.0	287.09
3:45	684.2	242.3	667.5	261.4	15:45	684.2	253.9	678.0	286.20
4:00	684.2	247.8	664.6	264.1	16:00	684.2	253.4	678.6	287.49
4:15	684.2	250.7	659.0	269.6	16:15	684.2	257	679.6	287.11
4:30	684.2	255	660.7	267.9	16:30	684.2	263.1	677.4	294.27
4:45	684.2	255.8	656.6	273.2	16:45	684.2	264.9	678.1	299.63
5:00	684.2	263.1	660.6	269.0	17:00	684.2	274.6	680.2	306.16
5:15	684.2	266.8	638.8	279.7	17:15	684.2	286.8	675.3	309.84
5:30	684.2	269.8	640.7	284.7	17:30	684.2	296.2	677.3	316.60
6:45	684.2	284.2	640.2	291.5	17:45	684.2	307.2	677.0	317.68
6:00	689.7	284.7	637.3	283.7	18:00	689.7	313.2	675.4	331.15
6:15	689.7	297.2	646.5	309.8	18:15	689.7	320.2	681.1	348.79
6:30	689.7	315.3	647.5	327.6	18:30	689.7	320.1	680.4	345.85
6:45	689.7	319.4	648.9	324.5	18:45	689.7	316.6	683.6	337.64
7:00	689.7	313.8	649.0	332.7	19:00	689.7	316.7	684.5	325.84
7:15	689.7	311.5	648.9	322.1	19:15	689.7	314.9	682.8	318.47
7:30	689.7	306.6	649.0	319.9	19:30	689.7	310.5	681.0	316.34
7:45	689.7	295.1	648.8	289.3	19:45	689.7	305.7	683.1	316.64
8:00	689.7	289.4	648.6	294.1	20:00	689.7	303.2	681.6	311.00
8:15	689.7	275.1	647.4	303.6	20:15	684.2	301.7	675.8	308.44
8:30	689.7	270.9	648.4	305.3	20:30	684.2	298.4	678.7	306.78
8:45	689.7	269.9	651.9	302.4	20:45	684.2	292.2	675.7	302.35
9:00	689.7	268.2	647.5	298.5	21:00	684.2	283.5	678.4	295.28
9:15	684.2	269.3	649.3	298.7	21:15	684.2	286.5	674.0	291.20
9:30	684.2	265.6	635.1	299.2	21:30	684.2	282.3	676.4	284.59
9:45	684.2	267.1	638.7	305.7	21:45	684.2	277.3	678.4	291.22
10:00	684.2	266.1	639.3	282.2	22:00	684.2	269.2	678.9	275.70
10:15	684.2	260.6	640.0	260.0	22:15	684.2	264.8	677.4	278.92
10:30	684.2	258.1	638.8	276.6	22:30	684.2	262.2	676.7	279.46
10:45	684.2	257	637.0	289.5	22:45	684.2	261.7	678.5	273.68
11:00	684.2	258.3	639.4	292.8	23:00	684.2	259.7	678.6	266.77
11:15	684.2	255.8	634.0	296.4	23:15	684.2	257.7	673.4	269.90
11:30	684.2	257.1	632.6	300.8	23:30	684.2	255.7	672.4	271.20
11:45	684.2	256	631.5	298.8	23:45	684.2	253.4	671.1	271.25

Yours faithfully  
Karma Choden

Coincidental peak load of Day(Last year):	
292.50 MW	8-Nov-16
Maximum Load till date:	
344.02 MW	18-Mar-17



འབྲུག་རྒྱལ་ཁོ་ལས་འཛིན།

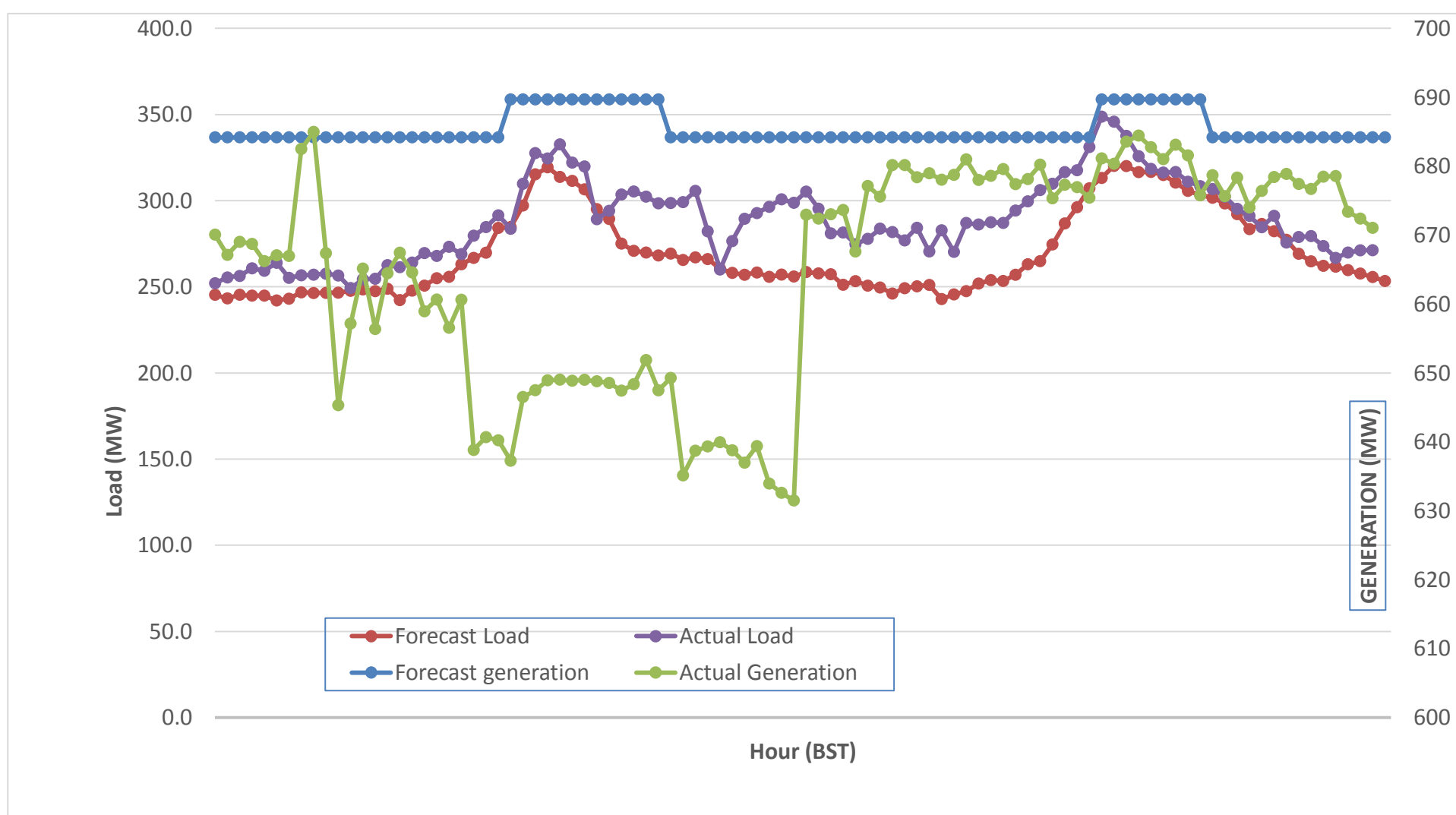
Bhutan Power Corporation Ltd.  
 Bhutan Power System Operator  
 Thimphu: Bhutan



Message No.: Enter your message number  
 From: Shift In-charge, Control Room

Date: 9-Nov-17  
 Time: 11:31

Forecast Generation & Load with Actual Generation & Load (08-Nov-2017).



Yours faithfully,  
 Karma Choden

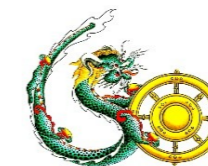
	MW	Coincidental peak load of Day(Last year):	
Peak Co-incident Generation(08-Nov-2017).	684.98	292.50 MW	8-Nov-16
Peak Co-incident Load(08-Nov-2017).	348.79	Maximum Load till date:	
		344.02 MW	18-Mar-17

Telephone: +975-02335631; Fax: +975-02335632; Email: bhutansystemoperator@bpc.bt; www.bpc.bt



འབྲུག་གྲོག་མོ་ལས་འཛིན།

Bhutan Power Corporation Ltd.  
Bhutan Power System Operator  
Thimphu: Bhutan



**Message No.:** Enter your message number  
**From:** Shift In-charge, Control Room

**Date:** 9-Nov-17  
**Time:** 11:31

**To**

Managing Director, BPC. Email: gemtshering@bpc.bt  
Director, O&MD, DGPC. Email: director.omid@drukgreen.com  
General Manager, TD, BPC. Email: thinleygyeltshen@bpc.bt  
General Manager, DCSD, BPC. Email: sandeprai@bpc.bt  
General Manager, BPSO, BPC. Email: ujjwaldahal@bpc.bt

**Sub:**

**Load Generation Balance Report of Today (09-Nov-2017).**

Hours (BST)	Forecast		Actual	
	Generation	Load	Generation	Load
0:00	675.3	250.4	674.3	268.89
0:15	675.3	249.1	672.7	265.63
0:30	678.2	249.7	665.7	267.95
0:45	678.2	249.9	663.7	266.20
1:00	678.2	247.4	662.6	268.99
1:15	678.2	244.4	663.8	267.48
1:30	678.2	246.7	662.4	268.90
1:45	678.2	247.1	663.9	263.56
2:00	678.2	248.9	666.9	263.82
2:15	678.2	247.9	663.5	264.22
2:30	678.2	247.4	664.6	260.78
2:45	678.2	248.3	665.7	273.10
3:00	678.2	250.8	666.7	267.10
3:15	678.2	249.9	666.5	266.64
3:30	678.2	248.5	652.5	266.77
3:45	678.2	243.6	625.0	267.09
4:00	678.2	246.8	625.4	271.20
4:15	678.2	252.5	626.5	275.80
4:30	678.2	256.3	627.7	279.80
4:45	678.2	256.1	625.9	276.65
5:00	678.2	262.6	627.0	280.02
5:15	678.2	267	628.7	277.70
5:30	678.2	270	626.3	281.09
5:45	678.2	282	626.3	295.47
6:00	691.2	285	626.6	299.59
6:15	691.2	304.4	625.2	301.17
6:30	691.2	319.7	641.3	333.95
6:45	691.2	336.5	640.8	333.98
7:00	691.2	327.1	642.8	343.81
7:15	691.2	316.3	641.2	338.26
7:30	691.2	315.5	642.6	337.07
7:45	691.2	297.5	651.7	326.48
8:00	691.2	288.7	623.2	319.98
8:15	691.2	276.7	665.4	310.74
8:30	678.2	271.6	668.4	307.43
8:45	678.2	270.8	653.9	284.42
9:00	678.2	268.7	648.8	295.19

Coincidental peak load of Day(Last year):	
288.71 MW	9-Nov-17

Maximum Load till date:	
344.02 MW	18-Mar-17

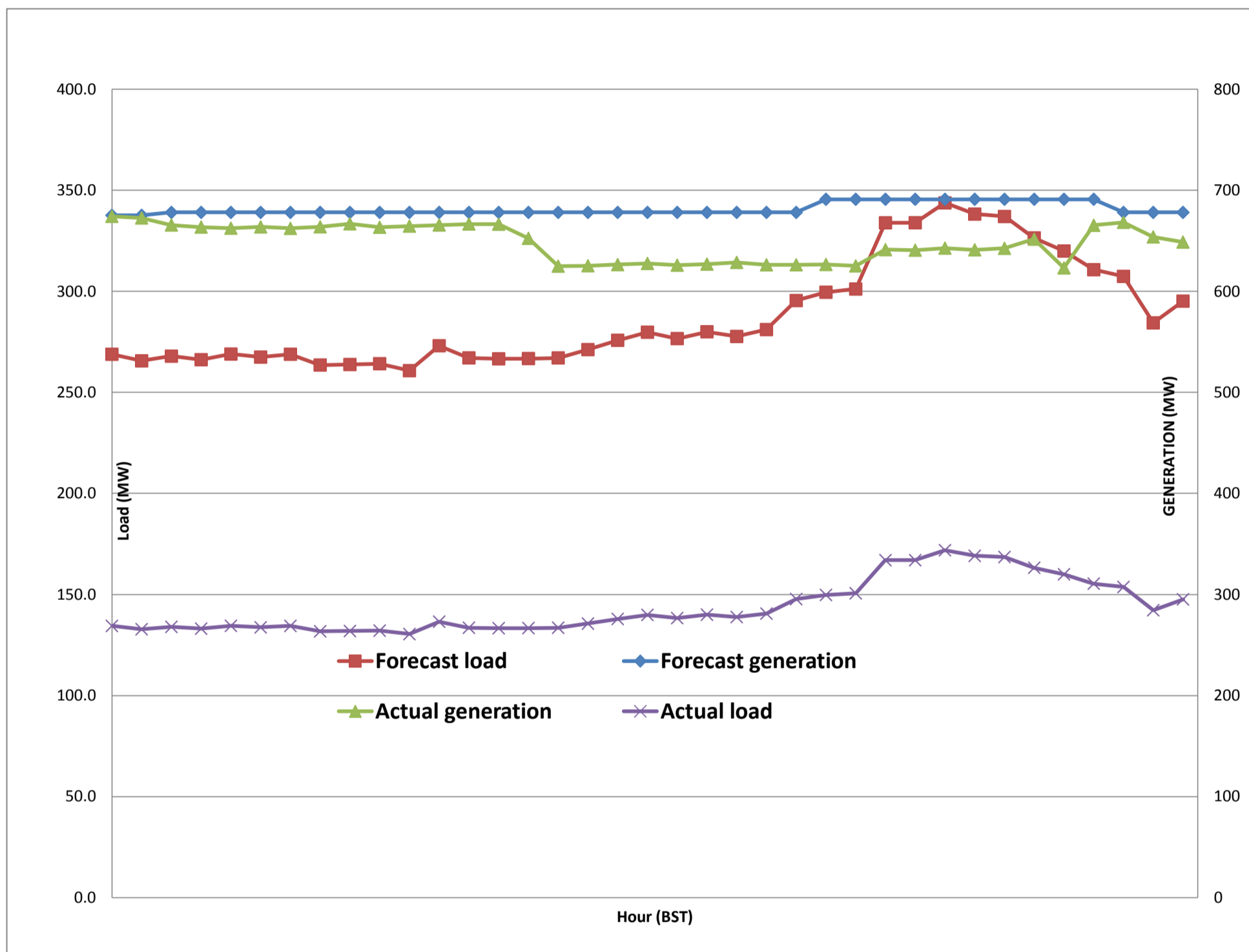
Yours faithfully,  
Karma Choden



Message No.: Enter your message number  
 From: Shift In-charge, Control Room

9-Nov-17  
 11:31

Forecast Generation & Load with Actual Generation & Load of Today from 00:00hrs to 09:00hrs(09-Nov-2017).



Yours faithfully  
 Karma Choden



འབྲུག་གྲོག་ལས་ཁུངས་ལྷན་ཁག།  
**Bhutan Power Corporation Ltd.**  
**Bhutan Power System Operator**  
 Thimphu: Bhutan



**Message No.:** Enter your message number  
**From:** Shift In-charge, Control Room  
**Date:** 9-Nov-17  
**Time:** 11:31

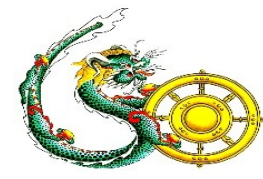
**To**

Managing Director, BPC. Email: gemtshering@bpc.bt  
 Director, O&MD, DGPC. Email: director.umd@drukgreen.com  
 General Manager, TD, BPC. Email: ktobgye@bpc.bt  
 General Manager, BPSO, BPC. Email: ujjwaldahal@bpc.bt  
 Advisor, BPC. Email: bharattamang@bpc.bt

**Sub:** Load Generation Balance Report of Tomorrow (10-Nov-2017).

Hours (BST)	Forecast		Hours (BST)	Forecast	
	Generation	Load		Generation	Load
0:00	654.4	251.30	12:00	654.4	274.2
0:15	654.4	250.60	12:15	654.4	270.1
0:30	654.4	252.70	12:30	654.4	268.5
0:45	654.4	252.70	12:45	654.4	261
1:00	654.4	250.60	13:00	654.4	261.5
1:15	654.4	249.30	13:15	654.4	258.2
1:30	654.4	249.70	13:30	654.4	258.9
1:45	654.4	249.50	13:45	654.4	252.7
2:00	654.4	251.30	14:00	654.4	256.3
2:15	654.4	250.30	14:15	654.4	256.6
2:30	654.4	248.80	14:30	654.4	258.5
2:45	654.4	248.30	14:45	654.4	253
3:00	654.4	252.50	15:00	654.4	255.5
3:15	654.4	251.10	15:15	654.4	253.6
3:30	654.4	252.10	15:30	654.4	256
3:45	654.4	247.00	15:45	654.4	259.1
4:00	654.4	250.70	16:00	654.4	261.6
4:15	654.4	255.70	16:15	654.4	267.3
4:30	654.4	259.30	16:30	654.4	275.7
4:45	654.4	261.90	16:45	654.4	279.1
5:00	654.4	266.30	17:00	654.4	286.5
5:15	654.4	276.60	17:15	654.4	295.9
5:30	654.4	284.20	17:30	654.4	304.6
6:45	654.4	298.30	17:45	654.4	315.3
6:00	661	300.70	18:00	661	323.8
6:15	661	325.40	18:15	661	331.4
6:30	661	340.70	18:30	661	329.5
6:45	661	354.30	18:45	661	326.3
7:00	661	349.30	19:00	661	323.5
7:15	661	335.80	19:15	661	320.8
7:30	661	335.20	19:30	661	318.8
7:45	661	314.40	19:45	661	313.7
8:00	661	306.10	20:00	654.4	310.7
8:15	661	283.10	20:15	654.4	308.3
8:30	661	279.50	20:30	654.4	304.2
8:45	661	278.30	20:45	654.4	298.5
9:00	654.4	276.20	21:00	654.4	289.9
9:15	654.4	276.70	21:15	654.4	290.6
9:30	654.4	273.70	21:30	654.4	286
9:45	654.4	275.70	21:45	654.4	282.5
10:00	654.4	271.80	22:00	654.4	276.1
10:15	654.4	265.40	22:15	654.4	272.4
10:30	654.4	266.50	22:30	654.4	269.2
10:45	654.4	268.70	22:45	654.4	265.7
11:00	654.4	270.20	23:00	654.4	264.5
11:15	654.4	269.40	23:15	654.4	262.2
11:30	654.4	272.50	23:30	654.4	261
11:45	654.4	271.00	23:45	654.4	258.2

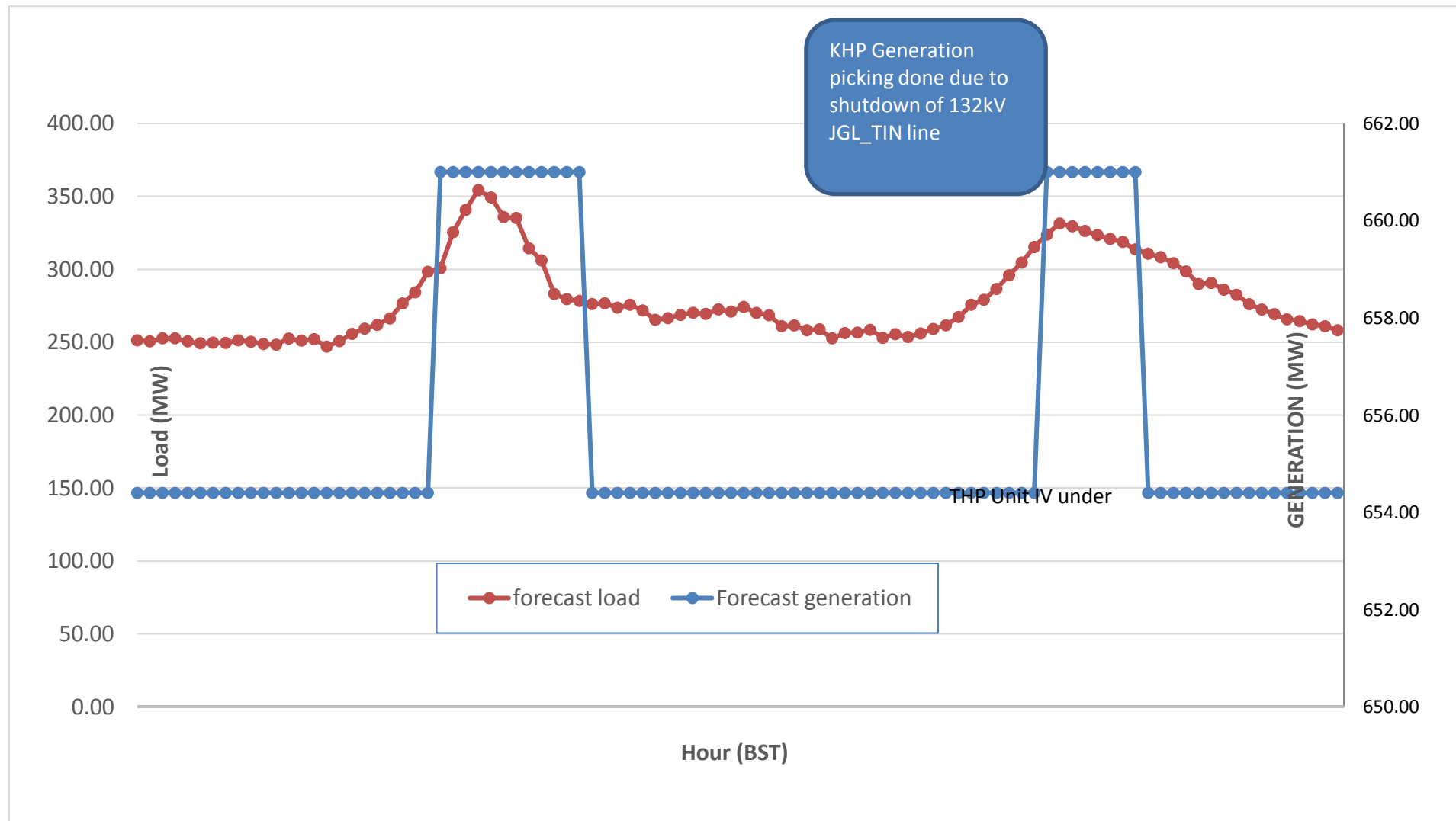
Yours faithfully,  
 Karma Choden



Message No.: Enter your message number  
 From: Shift In-charge, Control Room

Date: 9-Nov-17  
 Time: 11:31

**Scheduled Generation & Load Forecast for Tomorrow (10-Nov-2017).**



Yours faithfully,  
 Karma Choden

	MW
Scheduled Peak Generation(10-Nov-2017).	376.90
Forecast Peak Load(10-Nov-2017).	300.60