



འབྲུག་གློག་ཐོ་ལས་འཛིན།

Bhutan Power Corporation Ltd.  
Bhutan Power System Operator  
Thimphu: Bhutan



Message No.: Enter your message number  
From: Shift In-charge, Control Room

Date: 6-Nov-17  
Time: 11:18

To  
Managing Director, BPC. Email: gemtshering@bpc.bt  
Director, O&MD, DGPC. Email: director.omb@drukgreen.com  
General Manager, TD, BPC. Email: ktobgye@bpc.bt  
General Manager, DCSD, BPC. Email: sandeeprai@bpc.bt  
General Manager, BPSO, BPC. Email: ujjwaldahal@bpc.bt

Sub: **Load Generation Balance Report of Yesterday (05-Nov-2017).**

Hours (BST)	Forecast		Actual		Hours (BST)	Forecast		Actual	
	Generation	Load	Generation	Load		Generation	Load	Generation	Load
0:00	756.9	246.6	712.4	254.6	12:00	756.9	265.6	737.1	264.47
0:15	756.9	243.1	715.9	247.6	12:15	756.9	265.1	735.4	258.13
0:30	756.9	244.5	711.7	255.7	12:30	756.9	265.9	738.5	262.93
0:45	756.9	244.2	714.3	254.6	12:45	756.9	261.6	737.4	248.55
1:00	756.9	248.4	717.1	262.9	13:00	756.9	259.9	738.4	260.06
1:15	756.9	245.6	713.1	260.9	13:15	756.9	260.7	736.4	267.11
1:30	756.9	247.5	712.5	252.7	13:30	756.9	256.3	735.6	266.55
1:45	756.9	247.3	710.6	256.9	13:45	756.9	254.7	717.1	259.08
2:00	756.9	245.4	714.7	257.4	14:00	756.9	257.6	716.3	261.87
2:15	756.9	247.9	714.3	254.1	14:15	756.9	259.3	727.6	260.71
2:30	756.9	244.6	712.9	256.3	14:30	756.9	261.2	727.0	256.17
2:45	756.9	244.9	714.0	259.6	14:45	756.9	258.6	726.2	248.25
3:00	756.9	245.4	710.4	258.2	15:00	756.9	258	728.0	263.27
3:15	756.9	246.6	714.4	256.1	15:15	756.9	263	725.0	262.52
3:30	756.9	245.1	717.9	258.9	15:30	756.9	265.3	726.8	263.52
3:45	756.9	244.2	718.2	258.3	15:45	756.9	261.6	729.9	266.03
4:00	756.9	243.2	719.7	257.0	16:00	756.9	260.3	728.4	268.07
4:15	756.9	247.8	721.0	258.5	16:15	756.9	265.8	730.3	257.19
4:30	756.9	246.7	718.6	261.5	16:30	756.9	268.6	727.5	265.79
4:45	756.9	246.3	720.4	260.4	16:45	756.9	275.4	725.4	269.98
5:00	756.9	250.1	720.0	261.6	17:00	756.9	280.1	728.0	276.43
5:15	756.9	252.7	722.8	264.7	17:15	756.9	290.6	730.4	279.88
5:30	756.9	258.1	720.9	268.1	17:30	756.9	299.6	728.3	317.60
6:45	756.9	260.3	720.1	270.1	17:45	756.9	312	729.7	327.24
6:00	756.9	269.1	725.3	274.4	18:00	756.9	316.6	726.0	336.98
6:15	756.9	281.3	740.3	277.4	18:15	756.9	317.8	726.3	336.92
6:30	756.9	288.7	738.8	274.0	18:30	756.9	318.1	722.3	336.49
6:45	756.9	292.9	743.3	285.2	18:45	756.9	313.7	726.7	337.84
7:00	756.9	293	738.3	292.1	19:00	756.9	313.5	724.4	337.73
7:15	756.9	292	739.8	279.8	19:15	756.9	311.2	726.8	336.13
7:30	756.9	289	737.9	280.8	19:30	756.9	308.1	725.5	332.66
7:45	756.9	281.7	734.1	284.3	19:45	756.9	303	721.5	327.36
8:00	756.9	278.7	736.9	281.7	20:00	756.9	301.4	722.7	319.38
8:15	756.9	278.5	755.0	272.6	20:15	756.9	298.7	718.6	321.68
8:30	756.9	278.1	755.8	272.9	20:30	756.9	295.7	718.3	313.26
8:45	756.9	274.9	754.2	278.2	20:45	756.9	287.8	716.3	313.23
9:00	756.9	275.5	755.6	275.9	21:00	756.9	282.4	715.3	297.81
9:15	756.9	275.6	742.6	275.5	21:15	756.9	280.7	713.8	305.05
9:30	756.9	272.8	737.7	276.9	21:30	756.9	277.6	714.8	300.98
9:45	756.9	275.4	740.4	269.5	21:45	756.9	272.1	709.9	299.93
10:00	756.9	273.9	740.0	262.6	22:00	756.9	268.5	707.0	281.84
10:15	756.9	267.5	734.7	262.9	22:15	756.9	261.9	688.1	274.34
10:30	756.9	265.9	738.2	260.3	22:30	756.9	257.5	687.5	272.83
10:45	756.9	264.9	736.1	248.3	22:45	756.9	252.9	688.3	269.97
11:00	756.9	264.8	737.0	254.4	23:00	756.9	251.3	686.7	261.77
11:15	756.9	264.3	737.2	243.8	23:15	756.9	252	668.1	265.41
11:30	756.9	266.5	735.6	259.1	23:30	756.9	250.2	667.7	265.71
11:45	756.9	266.4	736.8	258.9	23:45	756.9	248.7	666.0	260.42

Yours faithfully  
Pema Lhamo

Coincidental peak load of Day(Last year):	
315.45 MW	5-Nov-16
Maximum Load till date:	
344.02 MW	18-Mar-17



འབྲུག་རྒྱལ་ཁོ་ལས་འཛིན།

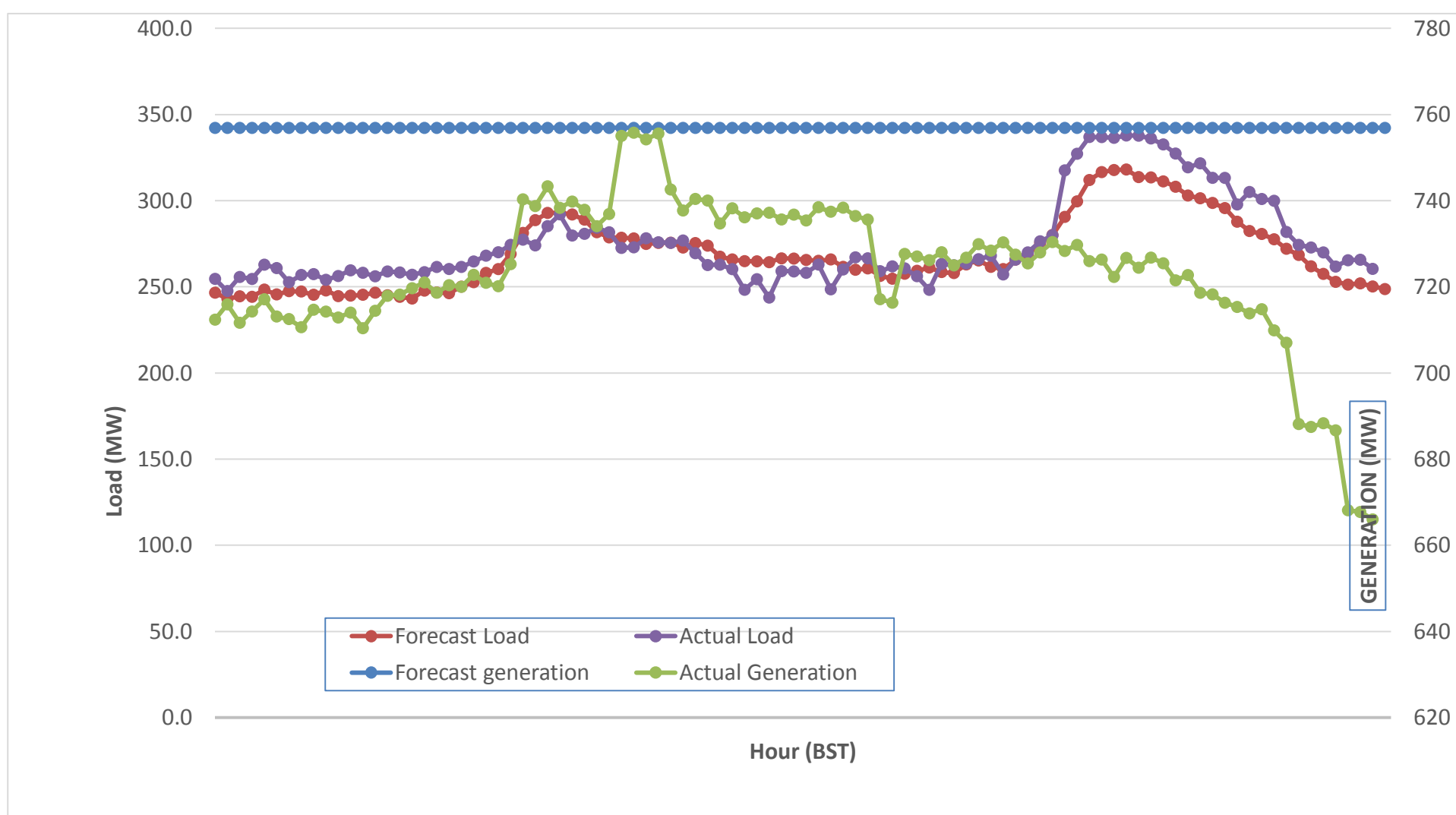
Bhutan Power Corporation Ltd.  
 Bhutan Power System Operator  
 Thimphu: Bhutan



Message No.: Enter your message number  
 From: Shift In-charge, Control Room

Date: 6-Nov-17  
 Time: 11:18

Forecast Generation & Load with Actual Generation & Load (05-Nov-2017).



Yours faithfully,

Peak Co-incident Generation(05-Nov-2017).	MW	Coincidental peak load of Day(Last year):	
	844.72	315.45 MW	5-Nov-16
		Maximum Load till date:	
		344.02 MW	18-Mar-17

Telephone: +975-02335631; Fax: +975-02335632; Email: bhutansystemoperator@bpc.bt; www.bpc.bt



འབྲུག་གྲོག་མོ་ལས་འཛིན།

Bhutan Power Corporation Ltd.  
Bhutan Power System Operator  
Thimphu: Bhutan



Message No.: Enter your message number  
From: Shift In-charge, Control Room

Date: 6-Nov-17  
Time: 11:18

To  
Managing Director, BPC. Email: gemtshering@bpc.bt  
Director, O&MD, DGPC. Email: director.omid@drukgreen.com  
General Manager, TD, BPC. Email: thinleygyeltshen@bpc.bt  
General Manager, DCSD, BPC. Email: sandeprai@bpc.bt  
General Manager, BPSO, BPC. Email: ujjwaldahal@bpc.bt

Sub: Load Generation Balance Report of Today (06-Nov-2017).

Hours (BST)	Forecast		Actual	
	Generation	Load	Generation	Load
0:00	722.1	239.2	667.8	259.64
0:15	722.1	236.2	666.7	259.17
0:30	722.1	237.6	666.0	256.58
0:45	722.1	237.5	665.5	255.40
1:00	722.1	237.6	665.9	248.10
1:15	722.1	233.2	666.7	254.19
1:30	722.1	236.4	665.4	253.80
1:45	722.1	239.4	667.1	255.10
2:00	722.1	239	667.3	257.43
2:15	722.1	239.5	666.8	254.61
2:30	722.1	239.3	667.6	257.04
2:45	722.1	240.5	669.0	257.66
3:00	722.1	243.5	666.8	252.03
3:15	722.1	247.7	667.3	241.41
3:30	722.1	246.2	668.0	253.37
3:45	722.1	243.2	666.9	225.08
4:00	722.1	249.8	666.8	235.41
4:15	722.1	252	666.1	238.79
4:30	722.1	256.1	668.0	251.41
4:45	722.1	255.6	667.0	256.07
5:00	722.1	262.5	667.4	257.20
5:15	722.1	265.8	668.8	263.38
5:30	722.1	270.6	669.8	263.29
6:45	722.1	283.1	678.4	270.03
6:00	722.1	287.7	674.7	280.34
6:15	722.1	297.2	677.5	296.20
6:30	722.1	310.4	682.0	307.13
6:45	722.1	312.7	682.0	315.95
7:00	722.1	314.8	681.6	319.42
7:15	722.1	315.3	694.2	289.94
7:30	722.1	312.5	697.8	288.95
7:45	722.1	298.7	697.3	288.34
8:00	722.1	292.5	697.3	284.53
8:15	722.1	273.4	698.2	282.04
8:30	722.1	269.1	714.4	271.67
8:45	722.1	266.3	716.5	271.60
9:00	722.1	266.1	718.2	268.97

292.95MW	6-Nov-17
----------	----------

Yours faithfully,  
Pema Lhamo

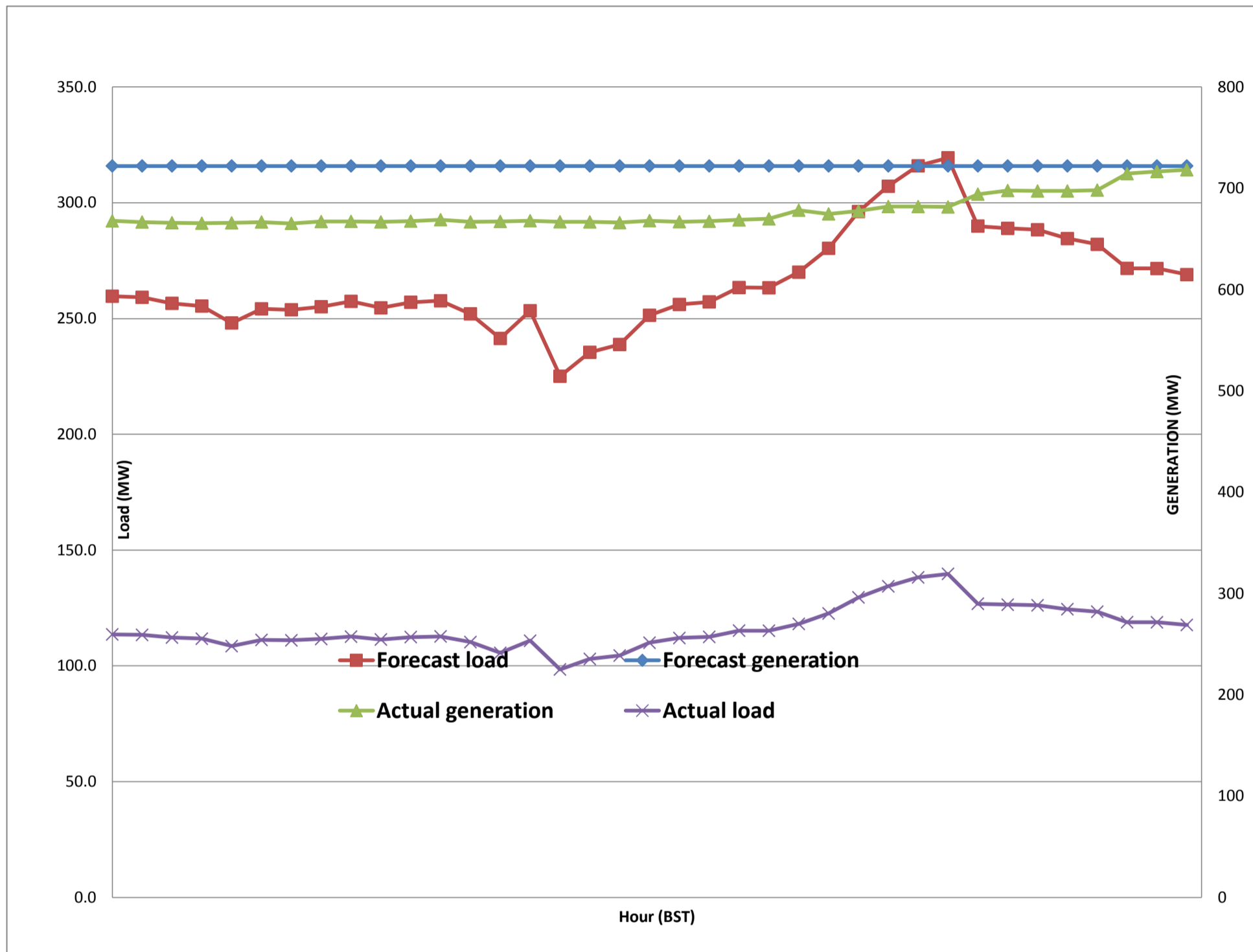
Maximum Load till date:	
344.02 MW	18-Mar-17



Message No.: Enter your message number  
 From: Shift In-charge, Control Room

6-Nov-17  
 11:18

Forecast Generation & Load with Actual Generation & Load of Today from 00:00hrs to 09:00hrs(06-Nov-2017).





འབྲུག་གྲོགས་ཚེལ་སྐུ་ལྷན་ཁག་།  
**Bhutan Power Corporation Ltd.**  
**Bhutan Power System Operator**  
 Thimphu: Bhutan



**Message No.:** Enter your message number  
**From:** Shift In-charge, Control Room  
**Date:** 6-Nov-17  
**Time:** 11:18

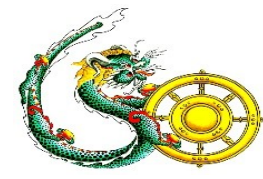
**To**

Managing Director, BPC. Email: gemtshering@bpc.bt  
 Director, O&MD, DGPC. Email: director.umd@drukgreen.com  
 General Manager, TD, BPC. Email: ktobgye@bpc.bt  
 General Manager, BPSO, BPC. Email: ujjwaldahal@bpc.bt  
 Advisor, BPC. Email: bharattamang@bpc.bt

**Sub:** Load Generation Balance Report of Tomorrow (07-Nov-2017).

Hours (BST)	Forecast		Hours (BST)	Forecast	
					Load
0:00	712.5	242.10	12:00	722.2	258.1
0:15	712.5	238.20	12:15	722.2	256.3
0:30	712.5	242.50	12:30	722.2	257.1
0:45	712.5	241.90	12:45	722.2	248.7
1:00	712.5	242.40	13:00	722.2	252.6
1:15	712.5	239.90	13:15	722.2	249.7
1:30	712.5	241.30	13:30	722.2	246.8
1:45	712.5	243.60	13:45	722.2	243.3
2:00	712.5	242.90	14:00	722.2	245.7
2:15	712.5	243.00	14:15	722.2	247.5
2:30	712.5	243.40	14:30	722.2	247.9
2:45	712.5	244.70	14:45	722.2	245
3:00	712.5	246.40	15:00	722.2	249.9
3:15	712.5	249.60	15:15	712.5	248.8
3:30	712.5	249.40	15:30	712.5	253.5
3:45	712.5	247.10	15:45	712.5	253.6
4:00	712.5	250.80	16:00	712.5	254.2
4:15	712.5	253.00	16:15	712.5	255
4:30	712.5	257.00	16:30	712.5	261.1
4:45	712.5	256.40	16:45	712.5	263.3
5:00	712.5	264.60	17:00	712.5	272.6
5:15	712.5	267.10	17:15	712.5	285.4
5:30	712.5	269.90	17:30	712.5	295
6:45	712.5	287.60	17:45	712.5	306.4
6:00	712.5	285.20	18:00	712.5	310.5
6:15	722.2	296.30	18:15	722.2	317.9
6:30	722.2	312.20	18:30	722.2	317.2
6:45	722.2	315.70	18:45	722.2	314.5
7:00	722.2	318.00	19:00	722.2	315.6
7:15	722.2	313.70	19:15	722.2	311.7
7:30	722.2	308.20	19:30	722.2	307.9
7:45	722.2	296.70	19:45	722.2	303.5
8:00	722.2	290.90	20:00	722.2	300.8
8:15	722.2	273.90	20:15	712.5	299.1
8:30	722.2	271.00	20:30	712.5	295.3
8:45	722.2	269.40	20:45	712.5	289.7
9:00	722.2	269.00	21:00	712.5	280.9
9:15	722.2	269.20	21:15	712.5	283.5
9:30	722.2	266.00	21:30	712.5	279.9
9:45	722.2	267.30	21:45	712.5	276.2
10:00	722.2	266.40	22:00	712.5	267.6
10:15	722.2	262.00	22:15	712.5	263.8
10:30	722.2	257.60	22:30	712.5	261.1
10:45	722.2	254.80	22:45	712.5	256.8
11:00	722.2	255.30	23:00	712.5	254.5
11:15	722.2	252.90	23:15	712.5	253.7
11:30	722.2	255.40	23:30	712.5	251.7
11:45	722.2	255.30	23:45	712.5	248.3

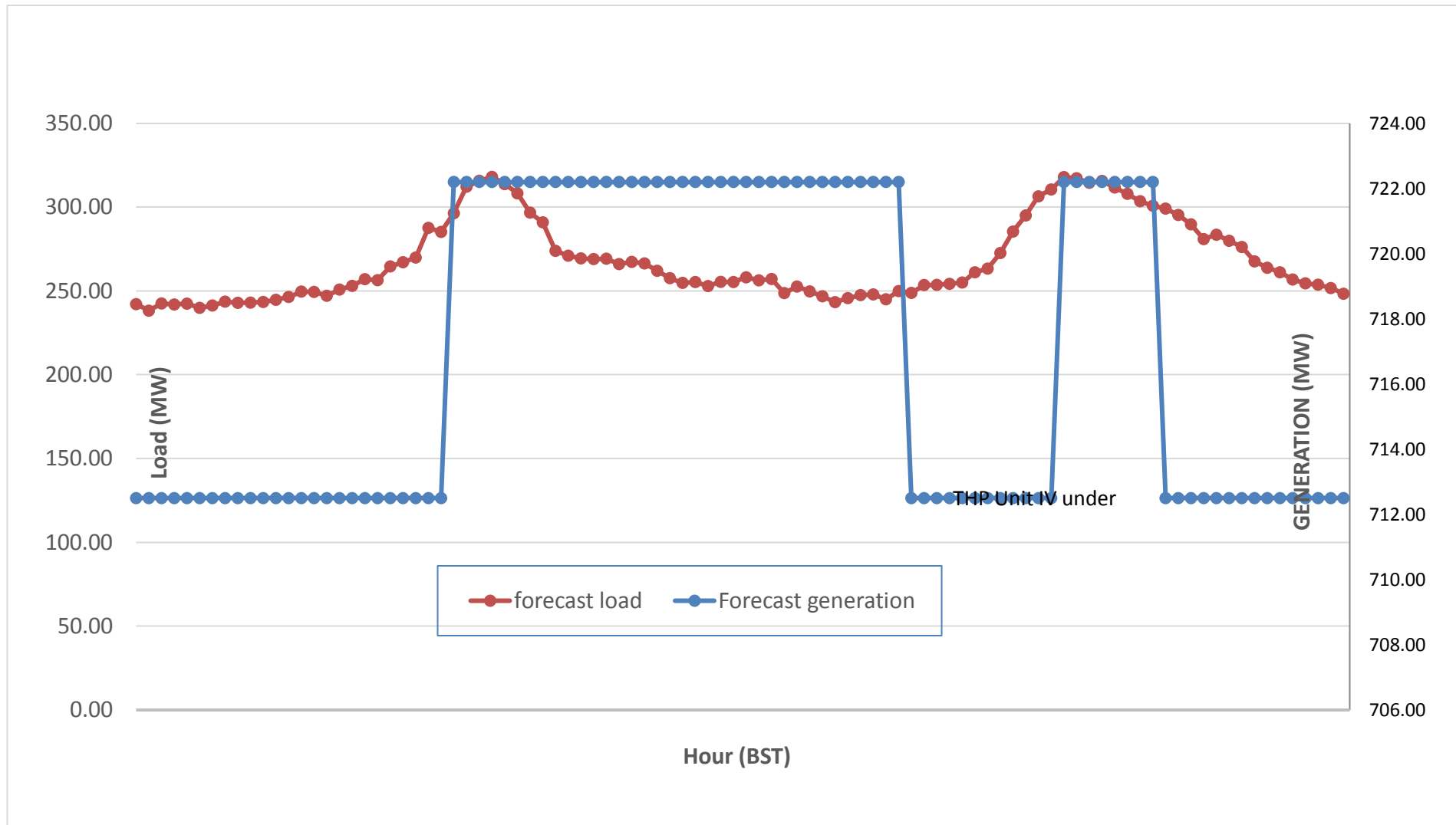
Yours faithfully,  
 Pema Lhamo



Message No.: Enter your message number  
 From: Shift In-charge, Control Room

Date: 6-Nov-17  
 Time: 11:18

**Scheduled Generation & Load Forecast for Tomorrow (07-Nov-2017).**



Yours faithfully,  
 Pema Lhamo

