



འབྲུག་གླིང་མེ་ལམ་འཛིན།

Bhutan Power Corporation Ltd.  
Bhutan Power System Operator  
Thimphu: Bhutan



Message No.: Enter your message number  
From: Shift In-charge, Control Room

Date: 5-Nov-17  
Time: 10:42

To  
Managing Director, BPC. Email: gemtshering@bpc.bt  
Director, O&MD, DGPC. Email: director.umd@drukgreen.com  
General Manager, TD, BPC. Email: ktobgye@bpc.bt  
General Manager, DCSD, BPC. Email: sandeeprai@bpc.bt  
General Manager, BPSO, BPC. Email: ujjwaldahal@bpc.bt

Sub: **Load Generation Balance Report of Yesterday (04-Nov-2017).**

Hours (BST)	Forecast		Actual		Hours (BST)	Forecast		Actual	
	Generation	Load	Generation	Load		Generation	Load	Generation	Load
0:00	751.6	246.9	699.2	230.8	12:00	751.6	264.8	733.6	252.32
0:15	751.6	241.9	698.7	231.7	12:15	751.6	264	731.6	251.77
0:30	751.6	243.5	700.7	231.3	12:30	751.6	264.9	734.5	250.46
0:45	751.6	243.9	702.1	235.5	12:45	751.6	260.3	731.5	246.04
1:00	751.6	248.7	699.2	230.6	13:00	751.6	258.9	734.4	245.32
1:15	751.6	245.5	702.6	218.7	13:15	751.6	260	732.0	223.38
1:30	751.6	247.9	703.5	222.8	13:30	751.6	256.1	731.5	216.80
1:45	751.6	247.4	704.7	224.6	13:45	751.6	254.4	730.3	217.04
2:00	751.6	245.8	705.4	230.4	14:00	751.6	257.3	730.3	211.48
2:15	751.6	248.1	711.3	228.7	14:15	751.6	259.2	732.6	215.20
2:30	751.6	244.8	711.9	236.6	14:30	751.6	260.6	731.4	220.40
2:45	751.6	245.2	708.5	238.5	14:45	751.6	258.7	723.3	220.31
3:00	751.6	245.5	710.9	237.7	15:00	751.6	257.9	719.9	220.32
3:15	751.6	246.6	712.1	240.4	15:15	751.6	262.7	719.6	219.00
3:30	751.6	244.9	713.0	242.0	15:30	751.6	264.6	718.3	223.82
3:45	751.6	244.7	708.1	226.4	15:45	751.6	260.6	716.3	216.82
4:00	751.6	243.4	714.5	236.0	16:00	751.6	259.8	720.1	226.44
4:15	751.6	248.1	714.1	236.2	16:15	751.6	265.6	711.3	231.28
4:30	751.6	246.7	728.8	239.6	16:30	751.6	268.9	707.2	236.08
4:45	751.6	246.2	733.6	236.4	16:45	751.6	275.4	706.6	240.93
5:00	751.6	250.5	733.9	240.2	17:00	751.6	279.7	705.2	253.96
5:15	751.6	252.6	731.7	244.8	17:15	751.6	290.4	706.7	262.41
5:30	751.6	258.1	731.3	246.7	17:30	751.6	299	707.5	266.33
6:45	751.6	260.5	729.1	253.1	17:45	751.6	311.6	706.5	281.09
6:00	751.6	269.7	734.2	255.9	18:00	751.6	316.6	706.9	277.20
6:15	751.6	282.1	730.7	265.1	18:15	751.6	317.3	706.0	309.95
6:30	751.6	290.6	730.5	276.3	18:30	751.6	317.5	708.8	313.05
6:45	751.6	294.2	731.1	277.3	18:45	751.6	313.4	707.0	307.72
7:00	751.6	293.6	730.5	283.7	19:00	751.6	313.4	707.8	312.73
7:15	751.6	293	734.2	281.7	19:15	751.6	311	709.5	308.27
7:30	751.6	289.9	733.0	278.5	19:30	751.6	308.2	707.0	295.87
7:45	751.6	282.3	735.2	281.9	19:45	751.6	302.1	706.5	289.55
8:00	751.6	278.8	729.5	271.7	20:00	751.6	300.9	707.8	294.36
8:15	751.6	277.8	732.1	270.6	20:15	751.6	297.3	707.9	293.15
8:30	751.6	277.4	731.0	262.5	20:30	751.6	294.6	706.4	293.11
8:45	751.6	274.3	730.5	259.7	20:45	751.6	287.1	705.6	284.97
9:00	751.6	274.8	732.8	268.5	21:00	751.6	281.6	703.8	281.87
9:15	751.6	274.9	734.9	265.4	21:15	751.6	280.1	707.2	278.70
9:30	751.6	272	733.9	261.1	21:30	751.6	276.6	706.2	281.48
9:45	751.6	274.7	730.9	254.1	21:45	751.6	271.1	705.7	279.63
10:00	751.6	273.4	729.8	255.7	22:00	751.6	267.6	708.2	272.60
10:15	751.6	267.1	731.6	254.7	22:15	751.6	261.1	714.2	274.28
10:30	751.6	265	732.8	235.9	22:30	751.6	256.7	711.5	269.29
10:45	751.6	263.8	731.5	251.2	22:45	751.6	251.9	712.5	266.58
11:00	751.6	264.4	727.2	247.6	23:00	751.6	250.3	715.3	261.99
11:15	751.6	263.4	733.8	245.9	23:15	751.6	251.2	716.2	260.12
11:30	751.6	265.7	727.2	242.7	23:30	751.6	249.5	716.3	258.11
11:45	751.6	265.7	731.7	251.9	23:45	751.6	247.8	711.2	255.73

Yours faithfully  
Pema Lhamo

Coincidental peak load of Day(Last year):	
295.45 MW	5-Nov-16
Maximum Load till date:	
344.02 MW	18-Mar-17



འབྲུག་རྒྱལ་ཁོ་ལས་འཛིན།

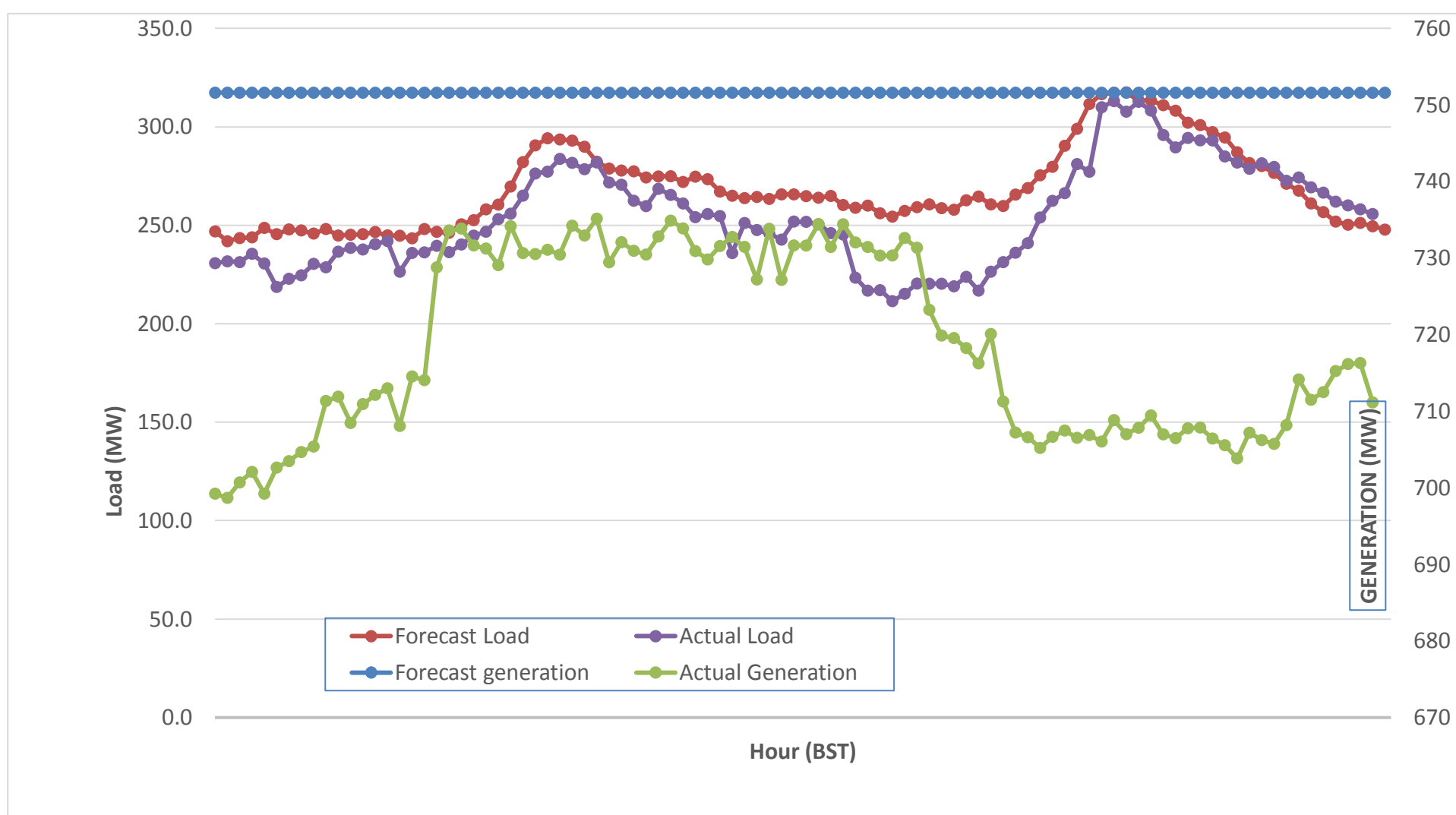
Bhutan Power Corporation Ltd.  
 Bhutan Power System Operator  
 Thimphu: Bhutan



Message No.: Enter your message number  
 From: Shift In-charge, Control Room

Date: 5-Nov-17  
 Time: 10:42

Forecast Generation & Load with Actual Generation & Load (04-Nov-2017).



Yours faithfully,

Peak Co-incident Generation(04-Nov-2017).	MW	Coincidental peak load of Day(Last year):	
	844.72	295.45 MW	5-Nov-16
		Maximum Load till date:	
		344.02 MW	18-Mar-17

Telephone: +975-02335631; Fax: +975-02335632; Email: bhutansystemoperator@bpc.bt; www.bpc.bt



འབྲུག་གྲོག་མོ་ལས་འཛིན།

Bhutan Power Corporation Ltd.  
Bhutan Power System Operator  
Thimphu: Bhutan



Message No.: Enter your message number  
From: Shift In-charge, Control Room

Date: 5-Nov-17  
Time: 10:42

To  
Managing Director, BPC. Email: gemtshering@bpc.bt  
Director, O&MD, DGPC. Email: director.umd@drukgreen.com  
General Manager, TD, BPC. Email: thinleygyeltshen@bpc.bt  
General Manager, DCSD, BPC. Email: sandeprai@bpc.bt  
General Manager, BPSO, BPC. Email: ujjwaldahal@bpc.bt

Sub: Load Generation Balance Report of Today (05-Nov-2017).

Hours (BST)	Forecast		Actual	
	Generation	Load	Generation	Load
0:00	756.9	246.6	712.4	254.62
0:15	756.9	243.1	715.9	247.56
0:30	756.9	244.5	711.7	255.71
0:45	756.9	244.2	714.3	254.57
1:00	756.9	248.4	717.1	262.85
1:15	756.9	245.6	713.1	260.88
1:30	756.9	247.5	712.5	252.70
1:45	756.9	247.3	710.6	256.89
2:00	756.9	245.4	714.7	257.38
2:15	756.9	247.9	714.3	254.07
2:30	756.9	244.6	712.9	256.27
2:45	756.9	244.9	714.0	259.58
3:00	756.9	245.4	710.4	258.16
3:15	756.9	246.6	714.4	256.12
3:30	756.9	245.1	717.9	258.90
3:45	756.9	244.2	718.2	258.34
4:00	756.9	243.2	719.7	257.00
4:15	756.9	247.8	721.0	258.51
4:30	756.9	246.7	718.6	261.53
4:45	756.9	246.3	720.4	260.35
5:00	756.9	250.1	720.0	261.55
5:15	756.9	252.7	722.8	264.72
5:30	756.9	258.1	720.9	268.09
6:45	756.9	260.3	720.1	270.06
6:00	756.9	269.1	725.3	274.36
6:15	756.9	281.3	740.3	277.38
6:30	756.9	288.7	738.8	274.05
6:45	756.9	292.9	743.3	285.21
7:00	756.9	293	738.3	292.07
7:15	756.9	292	739.8	279.78
7:30	756.9	289	737.9	280.77
7:45	756.9	281.7	734.1	284.30
8:00	756.9	278.7	736.9	281.66
8:15	756.9	278.5	755.0	272.59
8:30	756.9	278.1	755.8	272.94
8:45	756.9	274.9	754.2	278.16
9:00	756.9	275.5	755.6	275.86

315.44MW	5-Nov-17
Maximum Load till date:	
344.02 MW	18-Mar-17

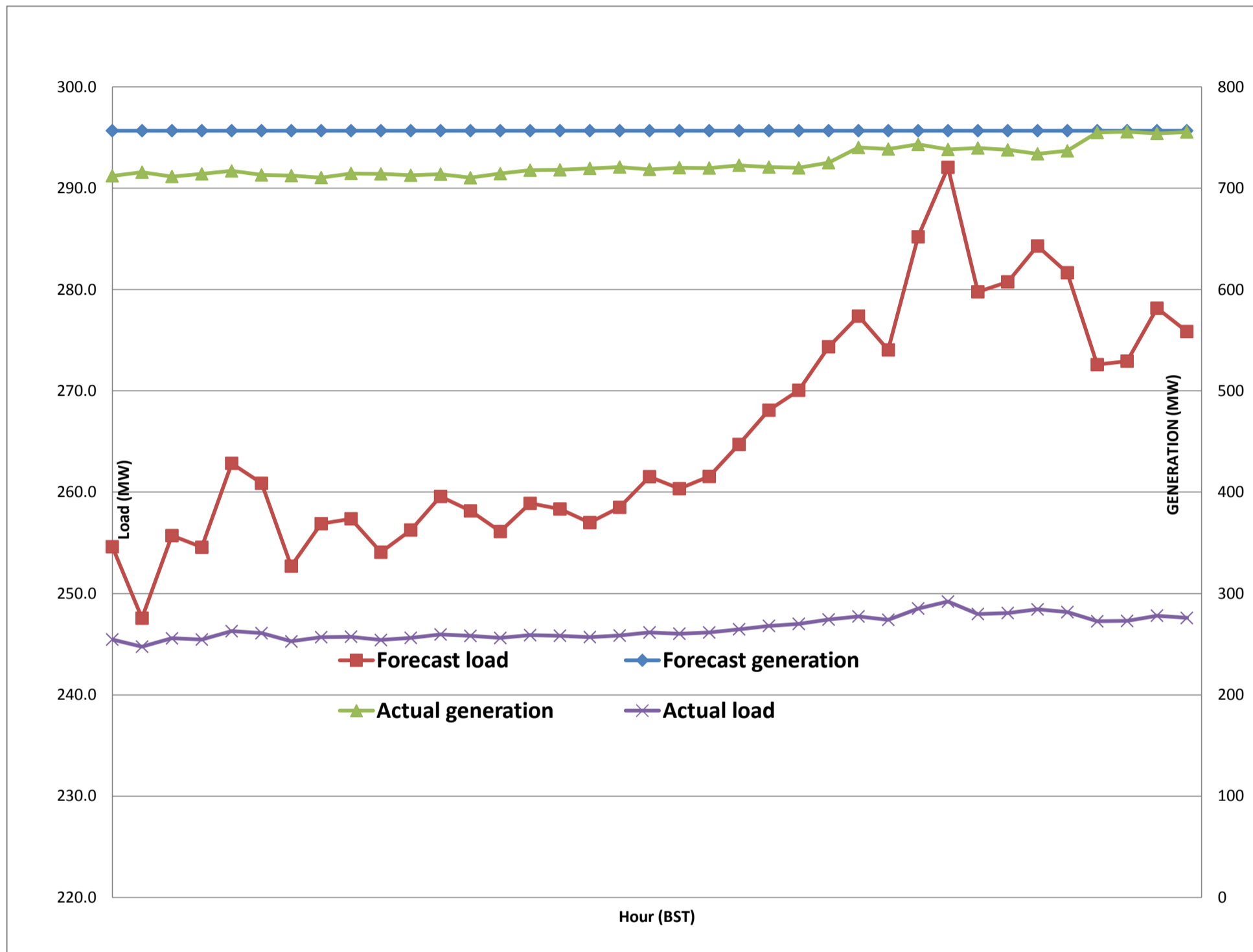
Yours faithfully,  
Pema Lhamo



Message No.: Enter your message number  
 From: Shift In-charge, Control Room

5-Nov-17  
 10:42

Forecast Generation & Load with Actual Generation & Load of Today from 00:00hrs to 09:00hrs(05-Nov-2017).





འབྲུག་གྲོག་ལས་ཁུངས་ལྷན་ཁག།  
**Bhutan Power Corporation Ltd.**  
**Bhutan Power System Operator**  
 Thimphu: Bhutan



**Message No.:** Enter your message number  
**From:** Shift In-charge, Control Room  
**Date:** 5-Nov-17  
**Time:** 10:42

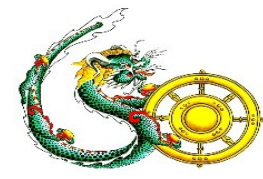
**To**

Managing Director, BPC. Email: gemtshering@bpc.bt  
 Director, O&MD, DGPC. Email: director.umd@drukgreen.com  
 General Manager, TD, BPC. Email: ktobgye@bpc.bt  
 General Manager, BPSO, BPC. Email: ujjwaldahal@bpc.bt  
 Advisor, BPC. Email: bharattamang@bpc.bt

**Sub:** Load Generation Balance Report of Tomorrow (06-Nov-2017).

Hours (BST)	Forecast		Hours (BST)	Forecast	
					Load
0:00	722.1	239.20	12:00	722.1	255.4
0:15	722.1	236.20	12:15	722.1	254.5
0:30	722.1	237.60	12:30	722.1	255
0:45	722.1	237.50	12:45	722.1	246.4
1:00	722.1	237.60	13:00	722.1	247.6
1:15	722.1	233.20	13:15	722.1	242.7
1:30	722.1	236.40	13:30	722.1	239.5
1:45	722.1	239.40	13:45	722.1	238.1
2:00	722.1	239.00	14:00	722.1	239.3
2:15	722.1	239.50	14:15	722.1	242.4
2:30	722.1	239.30	14:30	722.1	243.5
2:45	722.1	240.50	14:45	722.1	242.5
3:00	722.1	243.50	15:00	722.1	244.7
3:15	722.1	247.70	15:15	722.1	244.6
3:30	722.1	246.20	15:30	722.1	247.9
3:45	722.1	243.20	15:45	722.1	249.5
4:00	722.1	249.80	16:00	722.1	248.9
4:15	722.1	252.00	16:15	722.1	254.2
4:30	722.1	256.10	16:30	722.1	258.2
4:45	722.1	255.60	16:45	722.1	261.7
5:00	722.1	262.50	17:00	722.1	269.6
5:15	722.1	265.80	17:15	722.1	278.2
5:30	722.1	270.60	17:30	722.1	286.3
6:45	722.1	283.10	17:45	722.1	298
6:00	722.1	287.70	18:00	722.1	300.8
6:15	722.1	297.20	18:15	722.1	309.2
6:30	722.1	310.40	18:30	722.1	309.4
6:45	722.1	312.70	18:45	722.1	304.8
7:00	722.1	314.80	19:00	722.1	308.6
7:15	722.1	315.30	19:15	722.1	304.4
7:30	722.1	312.50	19:30	722.1	300.1
7:45	722.1	298.70	19:45	722.1	295.8
8:00	722.1	292.50	20:00	722.1	295.6
8:15	722.1	273.40	20:15	722.1	292.8
8:30	722.1	269.10	20:30	722.1	289
8:45	722.1	266.30	20:45	722.1	282.1
9:00	722.1	266.10	21:00	722.1	275.9
9:15	722.1	265.40	21:15	722.1	276.7
9:30	722.1	263.00	21:30	722.1	273.1
9:45	722.1	265.40	21:45	722.1	269.4
10:00	722.1	265.60	22:00	722.1	263.8
10:15	722.1	260.60	22:15	722.1	261.2
10:30	722.1	256.60	22:30	722.1	256.4
10:45	722.1	255.30	22:45	722.1	251.9
11:00	722.1	254.20	23:00	722.1	250.4
11:15	722.1	252.70	23:15	722.1	249.9
11:30	722.1	251.90	23:30	722.1	247.3
11:45	722.1	253.60	23:45	722.1	244.5

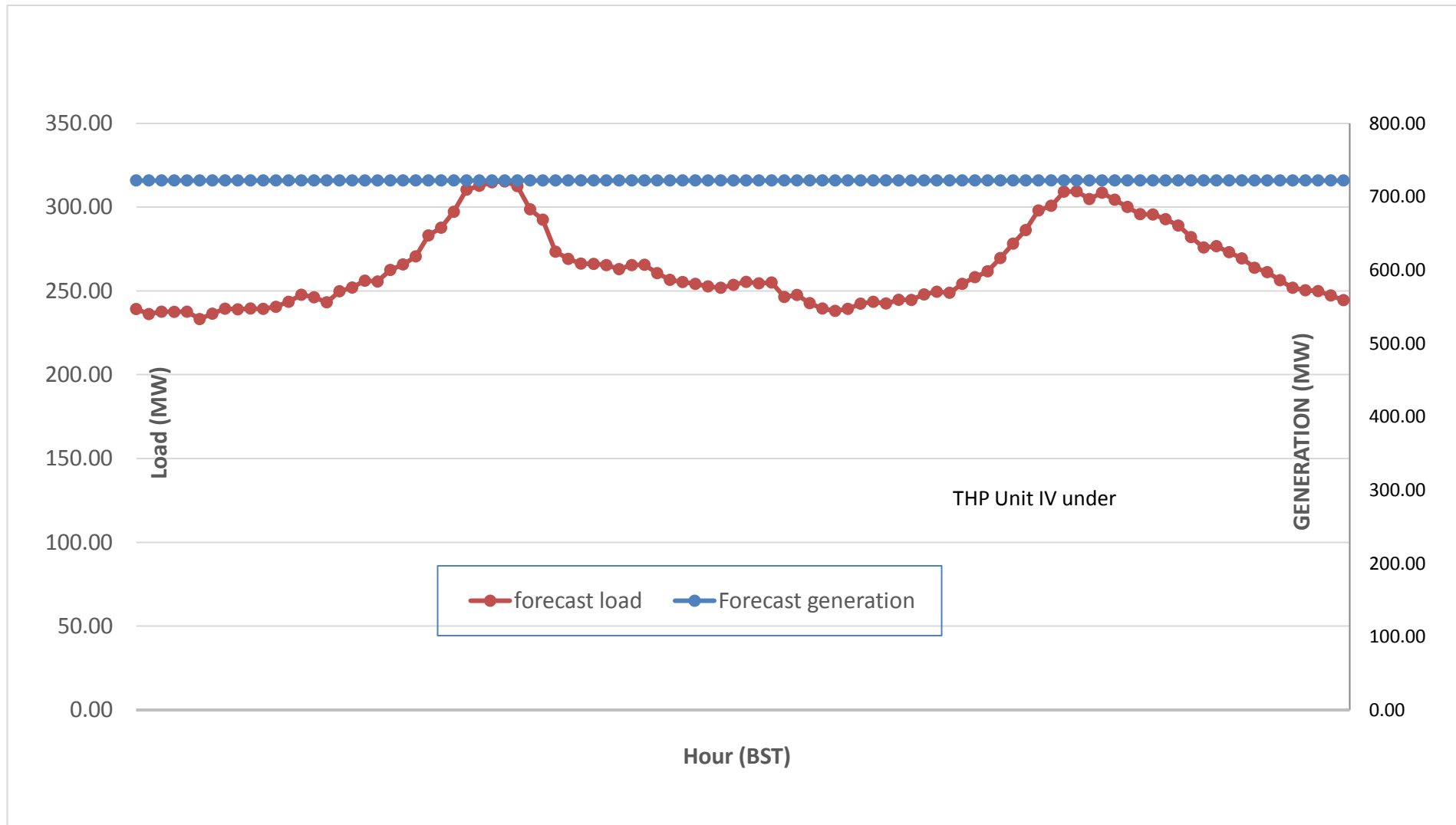
Yours faithfully,  
 Pema Lhamo



Message No.: Enter your message number  
 From: Shift In-charge, Control Room

Date: 5-Nov-17  
 Time: 10:42

**Scheduled Generation & Load Forecast for Tomorrow (06-Nov-2017).**



Yours faithfully,  
 Pema Lhamo

[Signature Box]