



འབྲུག་གླིང་གི་ལམ་འཛིན།

Bhutan Power Corporation Ltd.
Bhutan Power System Operator
Thimphu: Bhutan



Message No.: Enter your message number
From: Shift In-charge, Control Room

Date: 3-Nov-17
Time: 11:34

To
Managing Director, BPC. Email: gemtshering@bpc.bt
Director, O&MD, DGPC. Email: director.umd@drukgreen.com
General Manager, TD, BPC. Email: ktobgye@bpc.bt
General Manager, DCSD, BPC. Email: sandeeprai@bpc.bt
General Manager, BPSO, BPC. Email: ujjwaldahal@bpc.bt

Sub: Load Generation Balance Report of Yesterday (02-Nov-2017).

Hours (BST)	Forecast		Actual		Hours (BST)	Forecast		Actual	
	Generation	Load	Generation	Load		Generation	Load	Generation	Load
0:00	770.6	255.8	717.7	239.7	12:00	770.6	275.1	771.8	234.17
0:15	770.6	249.6	715.8	237.8	12:15	770.6	273.4	768.4	237.77
0:30	770.6	252.5	719.1	237.4	12:30	770.6	273.1	772.4	237.05
0:45	770.6	253.8	717.0	237.4	12:45	770.6	267.4	770.2	216.25
1:00	770.6	257.7	719.9	240.6	13:00	770.6	267.4	772.2	211.02
1:15	770.6	255.3	698.9	231.6	13:15	770.6	267.7	774.2	233.13
1:30	770.6	256.2	698.1	237.0	13:30	770.6	268.6	768.3	230.53
1:45	770.6	255.4	697.8	240.7	13:45	770.6	267.3	773.4	228.35
2:00	770.6	254.8	703.0	242.6	14:00	770.6	269.3	770.1	230.14
2:15	770.6	256.2	701.9	242.7	14:15	770.6	269.6	769.9	229.03
2:30	770.6	251.5	695.9	239.6	14:30	770.6	270.8	768.2	233.86
2:45	770.6	252.7	710.8	240.0	14:45	770.6	268.5	767.5	234.73
3:00	770.6	253.8	709.9	242.6	15:00	770.6	268	770.2	238.26
3:15	770.6	254.3	730.0	231.2	15:15	770.6	271.2	769.3	229.83
3:30	770.6	253.4	735.1	230.8	15:30	770.6	274.5	769.6	239.28
3:45	770.6	252.8	736.1	229.2	15:45	770.6	272.3	769.8	238.86
4:00	770.6	251.9	734.1	228.1	16:00	770.6	270.7	771.5	237.89
4:15	770.6	256.7	732.5	232.7	16:15	770.6	274.4	770.2	238.28
4:30	770.6	254.7	734.9	232.6	16:30	770.6	279.3	771.7	243.16
4:45	770.6	256.2	733.1	234.5	16:45	770.6	284.7	770.1	252.12
5:00	770.6	259.4	734.4	235.0	17:00	770.6	288.6	770.1	254.67
5:15	770.6	262.4	722.2	241.8	17:15	770.6	299.4	766.3	258.84
5:30	770.6	266.6	714.5	245.8	17:30	770.6	306	754.0	267.07
6:45	770.6	268.1	713.4	250.6	17:45	770.6	321.1	763.9	281.73
6:00	770.6	278.4	718.9	250.7	18:00	770.6	325.8	758.9	271.49
6:15	771.7	288.4	711.8	257.6	18:15	771.7	326	740.1	273.89
6:30	771.7	296.9	714.3	268.8	18:30	771.7	326.4	717.6	285.73
6:45	771.7	300.4	712.2	276.8	18:45	771.7	323	726.6	289.09
7:00	771.7	302	715.6	274.3	19:00	771.7	321	724.3	287.54
7:15	771.7	300.1	717.4	276.5	19:15	771.7	319.7	718.7	292.65
7:30	771.7	298.5	715.1	277.0	19:30	771.7	316.2	721.9	285.70
7:45	771.7	291.8	711.9	265.7	19:45	771.7	308	715.7	287.37
8:00	771.7	286.1	715.9	272.3	20:00	771.7	306.3	716.8	281.74
8:15	771.7	286.1	737.1	268.3	20:15	771.7	303	719.9	285.98
8:30	771.7	285.5	737.0	263.8	20:30	771.7	302.1	717.0	284.04
8:45	771.7	284.4	735.5	253.4	20:45	771.7	295.3	717.2	276.82
9:00	771.7	283.4	734.9	244.6	21:00	771.7	289.6	720.1	254.77
9:15	771.7	283.1	733.8	244.2	21:15	771.7	285.6	718.0	266.51
9:30	771.7	279.7	733.4	250.7	21:30	771.7	281.6	716.7	264.04
9:45	771.7	283	727.2	247.4	21:45	771.7	275.8	718.4	263.23
10:00	771.7	284.1	727.8	249.4	22:00	771.7	271.4	722.9	258.74
10:15	770.6	277.1	736.1	252.8	22:15	771.7	265.8	719.4	254.20
10:30	770.6	274.4	768.1	251.3	22:30	771.7	262.2	718.0	251.98
10:45	770.6	273.6	767.5	252.8	22:45	771.7	256	719.8	250.20
11:00	770.6	273.4	772.3	248.6	23:00	771.7	256.1	718.2	245.75
11:15	770.6	271.2	771.8	233.3	23:15	771.7	255	698.9	244.23
11:30	770.6	273	766.8	217.9	23:30	771.7	255	697.6	241.72
11:45	770.6	274.8	769.1	226.3	23:45	771.7	251.5	699.9	231.70

Yours faithfully
Jangchuk Selden

Coincidental peak load of Day(Last year):	
306.14 MW	3-Nov-16
Maximum Load till date:	
344.02 MW	18-Mar-17



འབྲུག་རྒྱལ་ཁོ་ལས་འཛིན།

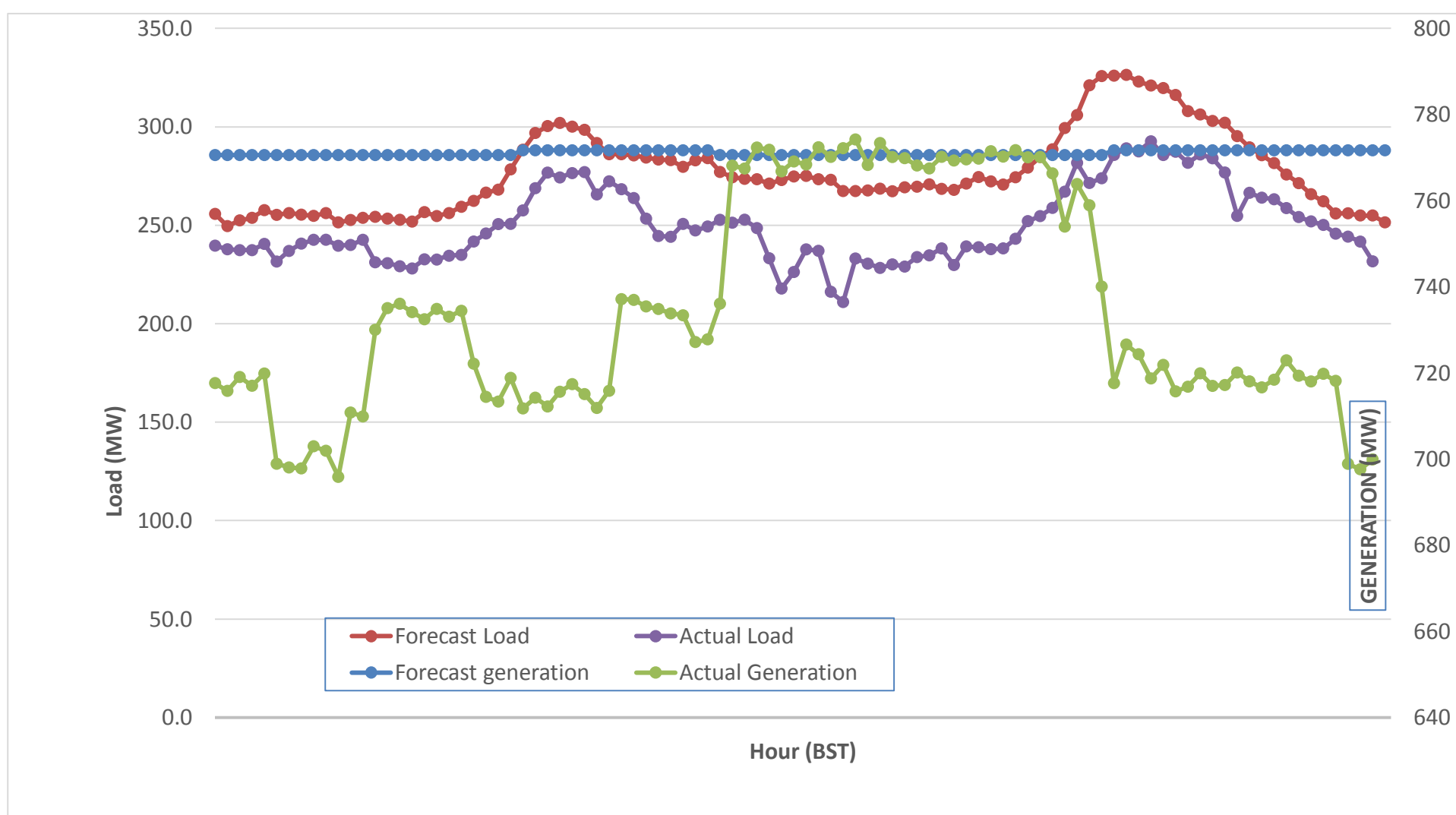
Bhutan Power Corporation Ltd.
Bhutan Power System Operator
Thimphu: Bhutan



Message No.: Enter your message number
From: Shift In-charge, Control Room

Date: 3-Nov-17
Time: 11:34

Forecast Generation & Load with Actual Generation & Load (02-Nov-2017).



Yours faithfully,

Peak Co-incident Generation(02-Nov-2017).	MW	Coincidental peak load of Day(Last year):	
	844.72	306.14 MW	3-Nov-16
		Maximum Load till date:	
		344.02 MW	18-Mar-17

Telephone: +975-02335631; Fax: +975-02335632; Email: bhutansystemoperator@bpc.bt; www.bpc.bt



འབྲུག་གྲོག་མོ་ལས་འཛིན།

Bhutan Power Corporation Ltd.
Bhutan Power System Operator
Thimphu: Bhutan



Message No.: Enter your message number
From: Shift In-charge, Control Room

Date: 3-Nov-17
Time: 11:34

To
Managing Director, BPC. Email: gemtshering@bpc.bt
Director, O&MD, DGPC. Email: director.omid@drukgreen.com
General Manager, TD, BPC. Email: thinleygyeltshen@bpc.bt
General Manager, DCSD, BPC. Email: sandeprai@bpc.bt
General Manager, BPSO, BPC. Email: ujjwaldahal@bpc.bt

Sub: Load Generation Balance Report of Today (03-Nov-2017).

Hours (BST)	Forecast		Actual	
	Generation	Load	Generation	Load
0:00	751.6	246.9	699.2	230.76
0:15	751.6	241.9	698.7	231.68
0:30	751.6	243.5	700.7	231.29
0:45	751.6	243.9	702.1	235.52
1:00	751.6	248.7	699.2	230.62
1:15	751.6	245.5	702.6	218.69
1:30	751.6	247.9	703.5	222.84
1:45	751.6	247.4	704.7	224.59
2:00	751.6	245.8	705.4	230.42
2:15	751.6	248.1	711.3	228.66
2:30	751.6	244.8	711.9	236.58
2:45	751.6	245.2	708.5	238.52
3:00	751.6	245.5	710.9	237.71
3:15	751.6	246.6	712.1	240.43
3:30	751.6	244.9	713.0	242.01
3:45	751.6	244.7	708.1	226.41
4:00	751.6	243.4	714.5	235.98
4:15	751.6	248.1	714.1	236.25
4:30	751.6	246.7	728.8	239.58
4:45	751.6	246.2	733.6	236.36
5:00	751.6	250.5	733.9	240.25
5:15	751.6	252.6	731.7	244.76
5:30	751.6	258.1	731.3	246.74
6:45	751.6	260.5	729.1	253.13
6:00	751.6	269.7	734.2	255.89
6:15	751.6	282.1	730.7	265.05
6:30	751.6	290.6	730.5	276.29
6:45	751.6	294.2	731.1	277.25
7:00	751.6	293.6	730.5	283.72
7:15	751.6	293	734.2	281.71
7:30	751.6	289.9	733.0	278.49
7:45	751.6	282.3	735.2	281.91
8:00	751.6	278.8	729.5	271.72
8:15	751.6	277.8	732.1	270.59
8:30	751.6	277.4	731.0	262.47
8:45	751.6	274.3	730.5	259.73
9:00	751.6	274.8	732.8	268.52

283.91MW	3-Nov-17
Maximum Load till date:	
344.02 MW	18-Mar-17

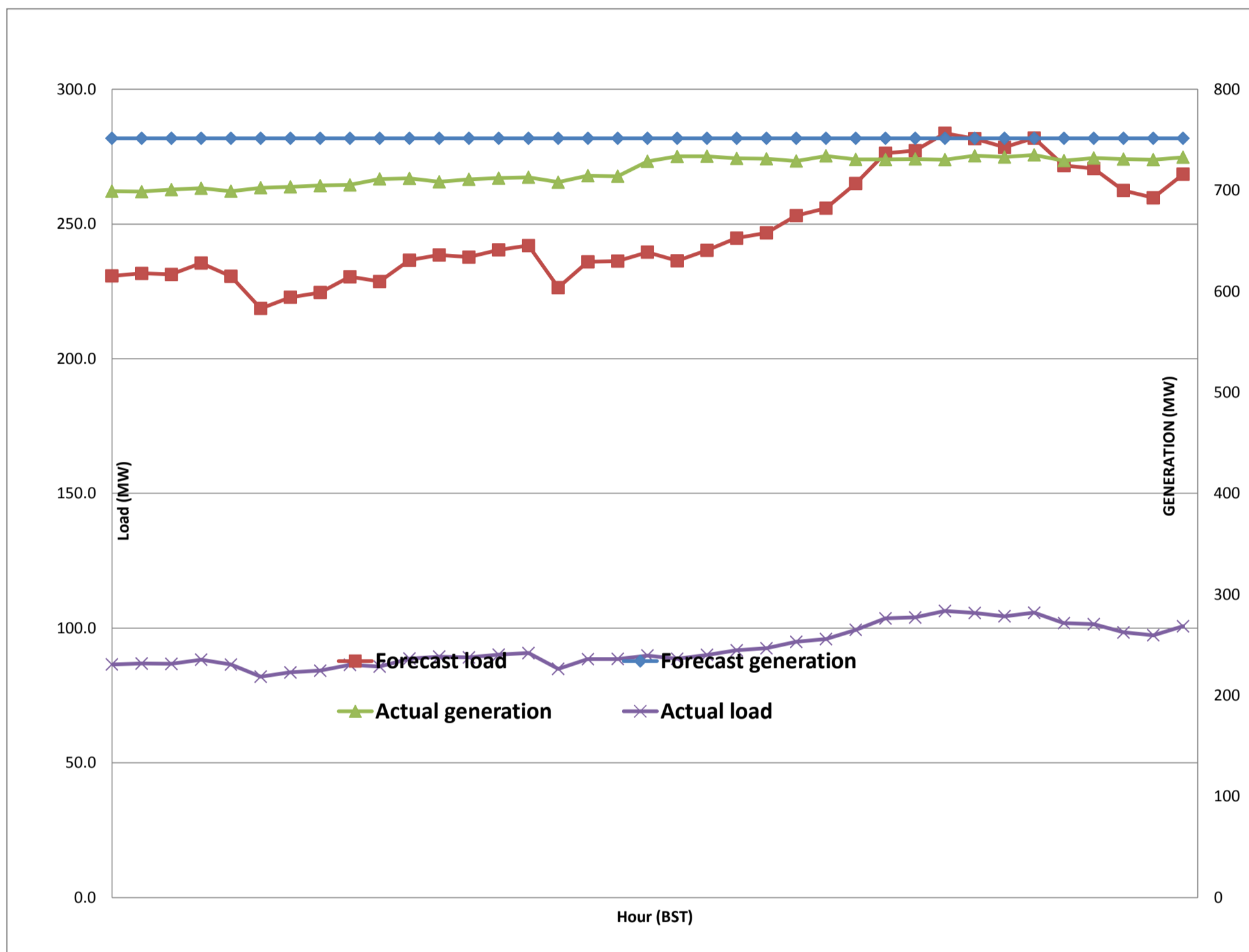
Yours faithfully,
Jangchuk Selden



Message No.: Enter your message number
 From: Shift In-charge, Control Room

3-Nov-17
 11:34

Forecast Generation & Load with Actual Generation & Load of Today from 00:00hrs to 09:00hrs(03-Nov-2017).





འབྲུག་གྲོག་ལས་ཁུངས་ལྷན་ཁག།
Bhutan Power Corporation Ltd.
Bhutan Power System Operator
 Thimphu: Bhutan



Message No.: Enter your message number
From: Shift In-charge, Control Room
Date: 3-Nov-17
Time: 11:34

To

Managing Director, BPC. Email: gemtshering@bpc.bt
 Director, O&MD, DGPC. Email: director.umd@drukgreen.com
 General Manager, TD, BPC. Email: ktobgye@bpc.bt
 General Manager, BPSO, BPC. Email: ujjwaldahal@bpc.bt
 Advisor, BPC. Email: bharattamang@bpc.bt

Sub: Load Generation Balance Report of Tomorrow (04-Nov-2017).

Hours (BST)	Forecast		Hours (BST)	Forecast	
					Load
0:00	756.9	246.60	12:00	756.9	265.6
0:15	756.9	243.10	12:15	756.9	265.1
0:30	756.9	244.50	12:30	756.9	265.9
0:45	756.9	244.20	12:45	756.9	261.6
1:00	756.9	248.40	13:00	756.9	259.9
1:15	756.9	245.60	13:15	756.9	260.7
1:30	756.9	247.50	13:30	756.9	256.3
1:45	756.9	247.30	13:45	756.9	254.7
2:00	756.9	245.40	14:00	756.9	257.6
2:15	756.9	247.90	14:15	756.9	259.3
2:30	756.9	244.60	14:30	756.9	261.2
2:45	756.9	244.90	14:45	756.9	258.6
3:00	756.9	245.40	15:00	756.9	258
3:15	756.9	246.60	15:15	756.9	263
3:30	756.9	245.10	15:30	756.9	265.3
3:45	756.9	244.20	15:45	756.9	261.6
4:00	756.9	243.20	16:00	756.9	260.3
4:15	756.9	247.80	16:15	756.9	265.8
4:30	756.9	246.70	16:30	756.9	268.6
4:45	756.9	246.30	16:45	756.9	275.4
5:00	756.9	250.10	17:00	756.9	280.1
5:15	756.9	252.70	17:15	756.9	290.6
5:30	756.9	258.10	17:30	756.9	299.6
6:45	756.9	260.30	17:45	756.9	312
6:00	756.9	269.10	18:00	756.9	316.6
6:15	756.9	281.30	18:15	756.9	317.8
6:30	756.9	288.70	18:30	756.9	318.1
6:45	756.9	292.90	18:45	756.9	313.7
7:00	756.9	293.00	19:00	756.9	313.5
7:15	756.9	292.00	19:15	756.9	311.2
7:30	756.9	289.00	19:30	756.9	308.1
7:45	756.9	281.70	19:45	756.9	303
8:00	756.9	278.70	20:00	756.9	301.4
8:15	756.9	278.50	20:15	756.9	298.7
8:30	756.9	278.10	20:30	756.9	295.7
8:45	756.9	274.90	20:45	756.9	287.8
9:00	756.9	275.50	21:00	756.9	282.4
9:15	756.9	275.60	21:15	756.9	280.7
9:30	756.9	272.80	21:30	756.9	277.6
9:45	756.9	275.40	21:45	756.9	272.1
10:00	756.9	273.90	22:00	756.9	268.5
10:15	756.9	267.50	22:15	756.9	261.9
10:30	756.9	265.90	22:30	756.9	257.5
10:45	756.9	264.90	22:45	756.9	252.9
11:00	756.9	264.80	23:00	756.9	251.3
11:15	756.9	264.30	23:15	756.9	252
11:30	756.9	266.50	23:30	756.9	250.2
11:45	756.9	266.40	23:45	756.9	248.7

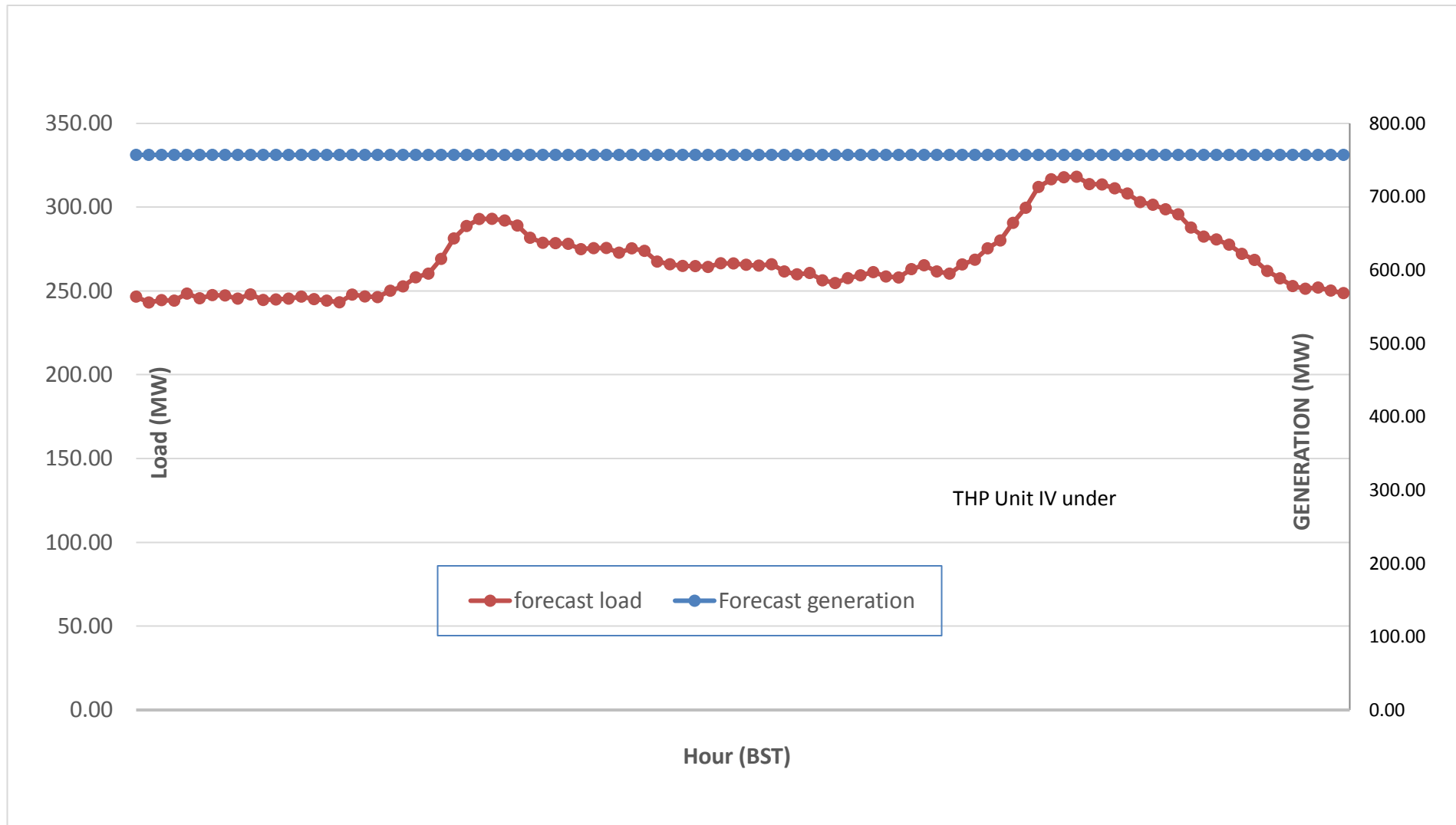
Yours faithfully,
 Jangchuk Selden



Message No.: Enter your message number
 From: Shift In-charge, Control Room

Date: 3-Nov-17
 Time: 11:34

Scheduled Generation & Load Forecast for Tomorrow (04-Nov-2017).



Yours faithfully,
 Jangchuk Selden

[Signature Box]