



ཕྱག་ལུགས་ལོ་ལམ་འཛིན།

Bhutan Power Corporation Ltd.  
Bhutan Power System Operator  
Thimphu: Bhutan



Message No.: Enter your message number  
From: Shift In-charge, Control Room

Date: 3-Nov-17  
Time: 11:34

To  
Managing Director, BPC. Email: gemtshering@bpc.bt  
Director, O&MD, DGPC. Email: director.omd@drukgreen.com  
General Manager, TD, BPC. Email: ktobgye@bpc.bt  
General Manager, DCSD, BPC. Email: sandeeprai@bpc.bt  
General Manager, BPSO, BPC. Email: ujjwaldahal@bpc.bt

Sub: Load Generation Balance Report of Yesterday (02-Nov-2017).

Hours (BST)	Forecast		Actual		Hours (BST)	Forecast		Actual	
	Generation	Load	Generation	Load		Generation	Load	Generation	Load
0:00	754.9	258.3	731.3	216.4	12:00	768.1	272.3	784.5	234.56
0:15	754.9	251	730.0	217.0	12:15	768.1	270.9	783.1	231.92
0:30	754.9	253.8	732.1	212.5	12:30	768.1	271.4	785.8	239.23
0:45	757.7	255.7	731.7	215.7	12:45	768.1	269.2	782.8	239.23
1:00	757.7	260.1	730.7	218.4	13:00	768.1	269	785.4	236.58
1:15	764.1	257.6	730.4	213.3	13:15	768.1	269.1	784.8	240.82
1:30	764.1	259.5	730.2	219.9	13:30	768.1	268.5	787.5	221.25
1:45	764.1	259.3	732.0	221.5	13:45	768.1	267	785.6	212.28
2:00	764.1	257.5	733.0	219.5	14:00	768.1	269.7	785.7	225.63
2:15	770.5	259.5	739.4	223.0	14:15	768.1	270.5	782.9	227.87
2:30	770.5	255.4	742.0	222.7	14:30	768.1	269.2	782.7	235.61
2:45	770.5	255.9	740.9	219.7	14:45	768.1	270.4	785.5	230.66
3:00	770.5	257.3	743.5	220.6	15:00	768.1	268.5	786.6	231.25
3:15	770.5	257.4	739.2	223.0	15:15	768.1	269.2	769.6	239.82
3:30	770.5	255.4	738.6	211.2	15:30	768.1	273.1	771.2	239.87
3:45	770.5	255.4	741.5	223.8	15:45	768.1	271.2	767.4	239.68
4:00	770.5	253.3	740.4	218.1	16:00	768.1	272.3	766.5	232.43
4:15	770.5	259.7	745.1	225.7	16:15	768.1	277.6	767.8	246.32
4:30	770.5	256.9	746.5	220.0	16:30	768.1	279.9	764.4	245.03
4:45	770.5	259.6	744.9	213.3	16:45	768.1	285.5	766.0	250.78
5:00	770.5	262.3	745.0	223.6	17:00	768.1	288.7	763.0	257.25
5:15	770.5	267	747.8	219.9	17:15	768.1	299.3	761.5	267.66
5:30	770.5	270.9	745.4	232.8	17:30	768.1	308.3	760.7	282.12
6:45	770.5	275.6	747.6	239.9	17:45	768.1	324.2	763.4	283.60
6:00	775.3	285.3	747.2	244.2	18:00	776.3	330.5	759.6	291.76
6:15	775.3	296	749.3	250.1	18:15	776.3	328.9	760.6	290.75
6:30	775.3	306.9	749.8	279.0	18:30	776.3	329.8	765.9	291.42
6:45	775.3	311.8	750.0	284.4	18:45	776.3	326.6	750.9	288.08
7:00	775.3	310.1	750.8	276.0	19:00	776.3	323.7	757.2	291.23
7:15	775.3	307	748.0	279.2	19:15	776.3	322.2	766.9	289.69
7:30	775.3	303.8	751.4	275.5	19:30	776.3	319	764.0	290.03
7:45	775.3	297.2	748.7	258.7	19:45	776.3	311.8	759.9	287.13
8:00	775.3	290.2	746.0	255.5	20:00	776.3	307.4	760.1	287.88
8:15	775.3	289.4	766.4	253.7	20:15	776.3	302.3	755.8	283.13
8:30	775.3	288.9	778.4	252.2	20:30	776.3	299.9	754.0	278.69
8:45	775.3	287.2	777.0	240.3	20:45	776.3	296.1	751.7	268.43
9:00	775.3	285.1	774.8	242.2	21:00	768.3	293.6	749.3	257.39
9:15	775.3	284.2	778.6	249.2	21:15	768.3	290.3	720.3	269.12
9:30	775.3	284.4	780.9	251.8	21:30	768.3	286.4	717.6	264.40
9:45	775.3	284.9	774.2	252.5	21:45	768.3	280.6	718.1	256.23
10:00	768.1	285.8	778.9	248.0	22:00	768.3	276.4	716.4	258.74
10:15	768.1	277.8	774.8	231.8	22:15	768.3	270.8	716.6	254.74
10:30	768.1	272.6	775.9	234.5	22:30	768.3	269.9	718.5	246.39
10:45	768.1	274.1	775.0	235.0	22:45	768.3	263.2	717.9	245.26
11:00	768.1	271.5	779.5	235.5	23:00	768.3	263.1	718.0	243.98
11:15	768.1	270.9	775.7	236.3	23:15	768.3	259.2	717.0	242.19
11:30	768.1	271.2	779.1	235.1	23:30	768.3	259.1	720.8	239.37
11:45	768.1	271.9	776.6	237.7	23:45	768.3	256.4	717.3	243.93

Yours faithfully  
Jangchuk Selden

Coincidental peak load of Day(Last year):	
299.30 MW	2-Nov-16
Maximum Load till date:	
344.02 MW	18-Mar-17



འབྲུག་གྲོག་ཚེ་ལས་འཛིན།

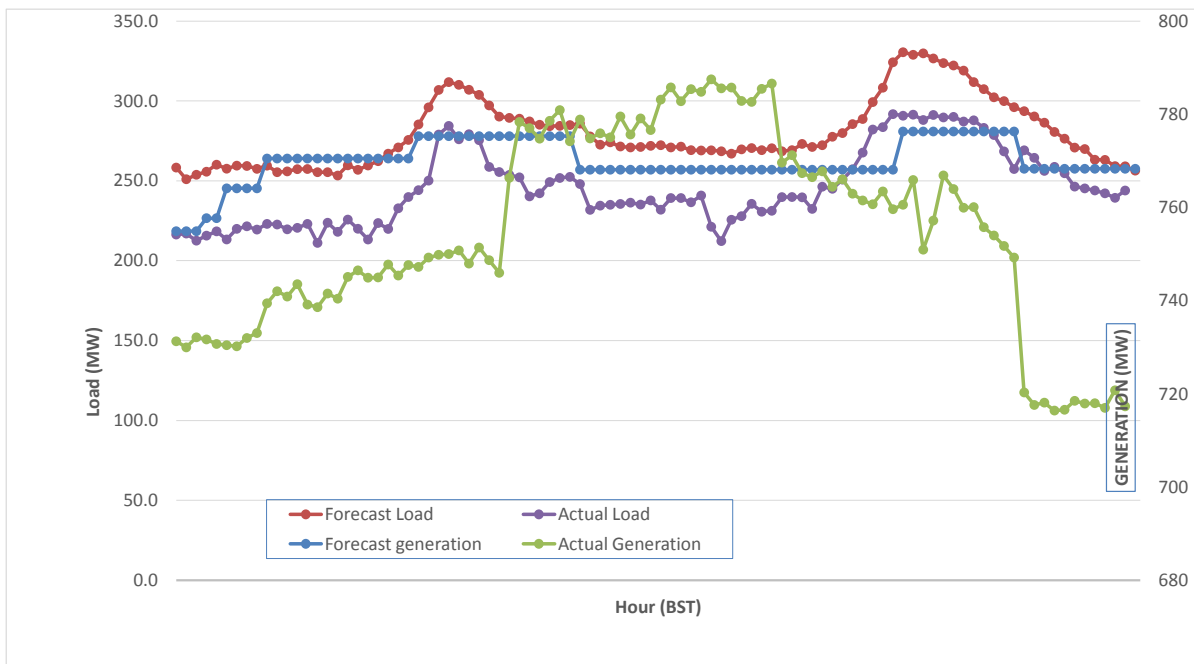
Bhutan Power Corporation Ltd.  
 Bhutan Power System Operator  
 Thimphu: Bhutan



Message No.: Enter your message number  
 From: Shift In-charge, Control Room

Date: 3-Nov-17  
 Time: 11:34

Forecast Generation & Load with Actual Generation & Load (02-Nov-2017).



Yours faithfully,

Peak Co-incident Generation(02-Nov-2017).

MW  
 844.72

Coincidental peak load of Day(Last year):

299.30 MW	2-Nov-16
Maximum Load till date:	
344.02 MW	18-Mar-17

Telephone: +975-02335631; Fax: +975-02335632; Email: bhutansystemoperator@bpc.bt; www.bpc.bt



འབྲུག་གློག་ལེ་ལས་ཁུངས།  
**Bhutan Power Corporation Ltd.**  
**Bhutan Power System Operator**  
**Thimphu: Bhutan**



**Message No.:** Enter your message number  
**From:** Shift In-charge, Control Room

**Date:** 3-Nov-17  
**Time:** 11:34

**To**  
 Managing Director, BPC. Email: gemtshering@bpc.bt  
 Director, O&MD, DGPC. Email: director.omid@drukgreen.com  
 General Manager, TD, BPC. Email: thinleygyeltshen@bpc.bt  
 General Manager, DCSD, BPC. Email: sandeeprai@bpc.bt  
 General Manager, BPSO, BPC. Email: ujwaldahal@bpc.bt

**Sub:** Load Generation Balance Report of Today (03-Nov-2017).

Hours (BST)	Forecast		Actual	
	Generation	Load	Generation	Load
0:00	770.6	255.8	717.6	239.65
0:15	770.6	249.6	715.8	237.83
0:30	770.6	252.5	719.1	237.37
0:45	770.6	253.8	717.0	237.37
1:00	770.6	257.7	719.9	240.55
1:15	770.6	255.3	698.9	231.59
1:30	770.6	256.2	698.1	236.97
1:45	770.6	255.4	697.8	240.70
2:00	770.6	254.8	703.0	242.63
2:15	770.6	256.2	701.9	242.66
2:30	770.6	251.5	695.9	239.62
2:45	770.6	252.7	710.8	240.01
3:00	770.6	253.8	709.9	242.63
3:15	770.6	254.3	730.0	231.22
3:30	770.6	253.4	735.1	230.76
3:45	770.6	252.8	736.1	229.19
4:00	770.6	251.9	734.1	228.07
4:15	770.6	256.7	732.5	232.72
4:30	770.6	254.7	734.9	232.59
4:45	770.6	256.2	733.1	234.53
5:00	770.6	259.4	734.4	234.97
5:15	770.6	262.4	722.2	241.76
5:30	770.6	266.6	714.5	245.85
6:45	770.6	268.1	713.4	250.62
6:00	770.6	278.4	718.9	250.72
6:15	771.7	288.4	711.8	257.56
6:30	771.7	296.9	714.3	268.84
6:45	771.7	300.4	712.2	276.77
7:00	771.7	302	715.6	274.30
7:15	771.7	300.1	717.4	276.50
7:30	771.7	298.5	715.1	277.02
7:45	771.7	291.8	711.9	265.67
8:00	771.7	286.1	715.9	272.34
8:15	771.7	286.1	737.1	268.33
8:30	771.7	285.5	737.0	263.83
8:45	771.7	284.4	735.5	253.39
9:00	771.7	283.4	734.9	244.57

283.91MW	3-Nov-17
----------	----------

Yours faithfully,  
 Jangchuk Selden

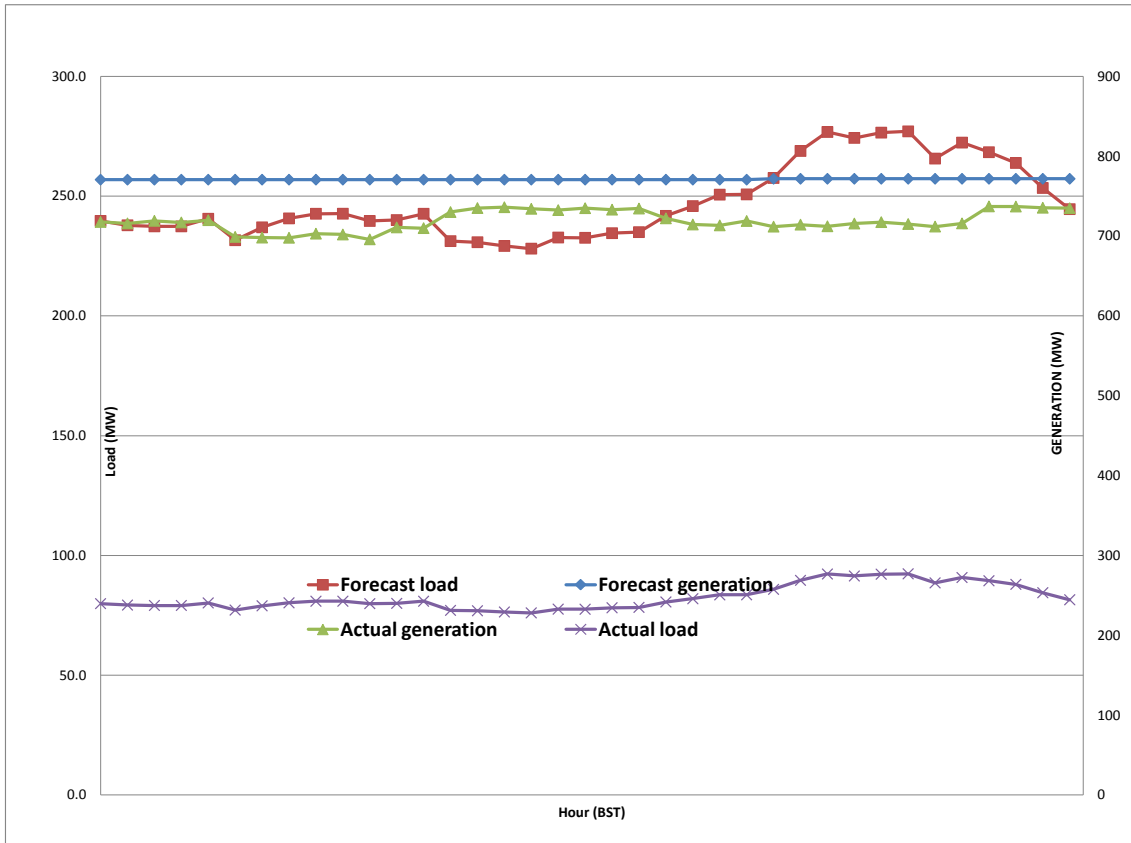
Maximum Load till date:	
344.02 MW	18-Mar-17



Message No.: Enter your message number  
 From: Shift In-charge, Control Room

3-Nov-17  
 11:34

Forecast Generation & Load with Actual Generation & Load of Today from 00:00hrs to 09:00hrs(03-Nov-2017).





འབྲུག་གྲོག་ལེ་ལས་འཛིན།  
Bhutan Power Corporation Ltd.  
Bhutan Power System Operator  
Thimphu: Bhutan



**Message No.:** Enter your message number  
**From:** Shift In-charge, Control Room  
**Date:** 3-Nov-17  
**Time:** 11:34

**To**

Managing Director, BPC. Email: gemtsheing@bpc.bt  
Director, O&MD, DGPC. Email: director.umd@drukgreen.com  
General Manager, TD, BPC. Email: ktobgye@bpc.bt  
General Manager, BPSO, BPC. Email: ujjwaldahal@bpc.bt  
Advisor, BPC. Email: bharattamang@bpc.bt

**Sub:** Load Generation Balance Report of Tomorrow (04-Nov-2017).

Hours (BST)	Forecast		Hours (BST)	Forecast	
					Load
0:00	751.6	246.90	12:00	751.6	264.8
0:15	751.6	241.90	12:15	751.6	264
0:30	751.6	243.50	12:30	751.6	264.9
0:45	751.6	243.90	12:45	751.6	260.3
1:00	751.6	248.70	13:00	751.6	258.9
1:15	751.6	245.50	13:15	751.6	260
1:30	751.6	247.90	13:30	751.6	256.1
1:45	751.6	247.40	13:45	751.6	254.4
2:00	751.6	245.80	14:00	751.6	257.3
2:15	751.6	248.10	14:15	751.6	259.2
2:30	751.6	244.80	14:30	751.6	260.6
2:45	751.6	245.20	14:45	751.6	258.7
3:00	751.6	245.50	15:00	751.6	257.9
3:15	751.6	246.60	15:15	751.6	262.7
3:30	751.6	244.90	15:30	751.6	264.6
3:45	751.6	244.70	15:45	751.6	260.6
4:00	751.6	243.40	16:00	751.6	259.8
4:15	751.6	248.10	16:15	751.6	265.6
4:30	751.6	246.70	16:30	751.6	268.9
4:45	751.6	246.20	16:45	751.6	275.4
5:00	751.6	250.50	17:00	751.6	279.7
5:15	751.6	252.60	17:15	751.6	290.4
5:30	751.6	258.10	17:30	751.6	299
6:45	751.6	260.50	17:45	751.6	311.6
6:00	751.6	269.70	18:00	751.6	316.6
6:15	751.6	282.10	18:15	751.6	317.3
6:30	751.6	290.60	18:30	751.6	317.5
6:45	751.6	294.20	18:45	751.6	313.4
7:00	751.6	293.60	19:00	751.6	313.4
7:15	751.6	293.00	19:15	751.6	311
7:30	751.6	289.90	19:30	751.6	308.2
7:45	751.6	282.30	19:45	751.6	302.1
8:00	751.6	278.80	20:00	751.6	300.9
8:15	751.6	277.80	20:15	751.6	297.3
8:30	751.6	277.40	20:30	751.6	294.6
8:45	751.6	274.30	20:45	751.6	287.1
9:00	751.6	274.80	21:00	751.6	281.6
9:15	751.6	274.90	21:15	751.6	280.1
9:30	751.6	272.00	21:30	751.6	276.6
9:45	751.6	274.70	21:45	751.6	271.1
10:00	751.6	273.40	22:00	751.6	267.6
10:15	751.6	267.10	22:15	751.6	261.1
10:30	751.6	265.00	22:30	751.6	256.7
10:45	751.6	263.80	22:45	751.6	251.9
11:00	751.6	264.40	23:00	751.6	250.3
11:15	751.6	263.40	23:15	751.6	251.2
11:30	751.6	265.70	23:30	751.6	249.5
11:45	751.6	265.70	23:45	751.6	247.8

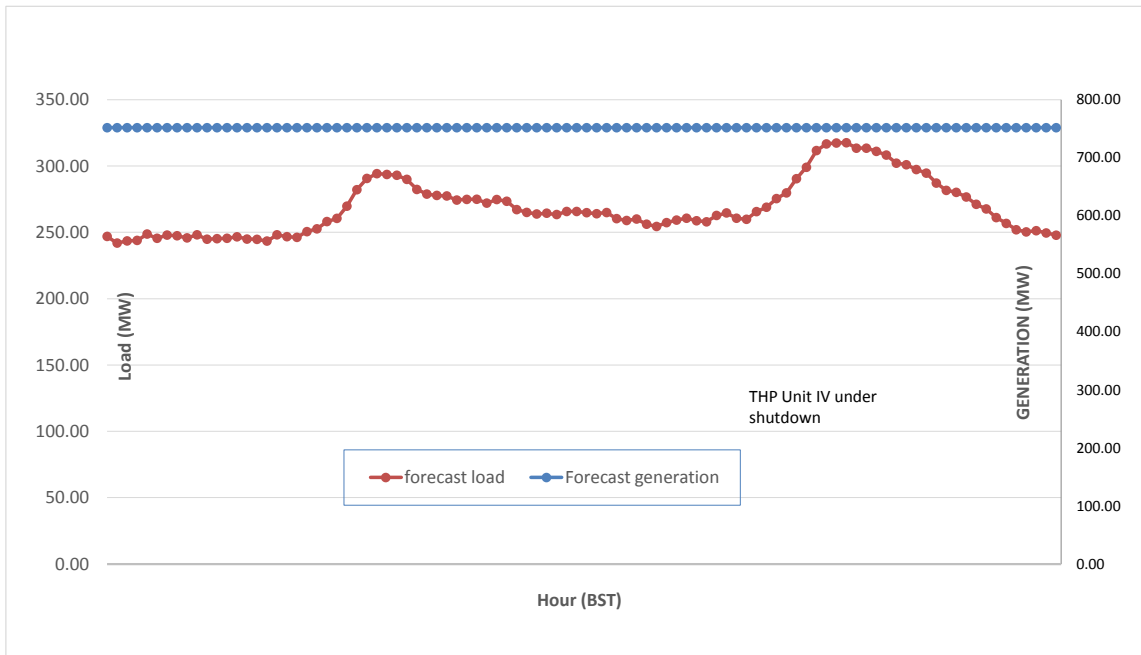
Yours faithfully,  
Jangchuk Selden



Message No.: Enter your message number  
 From: Shift In-charge, Control Room

Date: 3-Nov-17  
 Time: 11:34

**Scheduled Generation & Load Forecast for Tomorrow (04-Nov-2017).**



Yours faithfully,  
 Jangchuk Selden

