



འབྲུག་གླིང་གི་ལམ་འཛིན།

Bhutan Power Corporation Ltd.  
Bhutan Power System Operator  
Thimphu: Bhutan



Message No.: Enter your message number  
From: Shift In-charge, Control Room

Date: 2-Nov-17  
Time: 10:56

To  
Managing Director, BPC. Email: gemtshering@bpc.bt  
Director, O&MD, DGPC. Email: director.umd@drukgreen.com  
General Manager, TD, BPC. Email: ktobgye@bpc.bt  
General Manager, DCSD, BPC. Email: sandeeprai@bpc.bt  
General Manager, BPSO, BPC. Email: ujjwaldahal@bpc.bt

Sub: **Load Generation Balance Report of Yesterday (01-Nov-2017).**

Hours (BST)	Forecast		Actual		Hours (BST)	Forecast		Actual	
	Generation	Load	Generation	Load		Generation	Load	Generation	Load
0:00	791.1	259.4	785.0	245.8	12:00	791.1	272.5	796.1	282.83
0:15	791.1	256.4	783.6	241.1	12:15	791.1	272.7	798.2	279.02
0:30	791.1	257.9	784.1	248.2	12:30	791.1	273.6	800.9	279.05
0:45	791.1	258.7	783.1	245.6	12:45	791.1	272.3	725.7	257.48
1:00	791.1	259.1	782.3	251.8	13:00	791.1	272.3	722.5	230.64
1:15	791.1	257.3	783.3	250.3	13:15	791.1	272.4	788.5	256.61
1:30	791.1	258.1	781.0	249.8	13:30	791.1	270.3	783.5	266.59
1:45	791.1	259.1	783.6	246.7	13:45	791.1	269	779.6	265.77
2:00	791.1	256.2	782.0	247.5	14:00	791.1	271.9	783.1	266.70
2:15	791.1	259.1	781.6	247.4	14:15	791.1	273.6	780.7	263.96
2:30	791.1	254.9	780.1	244.1	14:30	791.1	273.5	781.1	274.33
2:45	791.1	254.8	781.6	245.5	14:45	791.1	273.4	781.0	272.80
3:00	791.1	257.7	781.3	249.9	15:00	791.1	270.9	780.1	265.82
3:15	791.1	257	779.8	247.8	15:15	791.1	273.4	781.6	275.98
3:30	791.1	256.8	780.8	245.9	15:30	791.1	277.6	779.4	275.84
3:45	791.1	253.7	779.6	243.9	15:45	791.1	276.3	778.8	273.16
4:00	791.1	252.3	782.1	245.9	16:00	791.1	278	780.3	267.94
4:15	791.1	259.5	781.9	249.7	16:15	791.1	282.3	776.3	264.90
4:30	791.1	258	780.0	249.3	16:30	791.1	284.2	776.2	268.84
4:45	791.1	259.6	780.2	246.4	16:45	791.1	291.6	774.8	279.45
5:00	791.1	261.7	785.6	247.7	17:00	791.1	295.2	777.4	284.78
5:15	791.1	267.6	790.2	251.2	17:15	791.1	304.5	775.4	294.39
5:30	791.1	271.5	790.0	253.1	17:30	791.1	316.9	775.5	290.53
6:45	791.1	276.1	791.2	246.1	17:45	791.1	330	774.0	311.16
6:00	791.1	285.1	787.5	256.8	18:00	791.1	335.9	772.3	305.58
6:15	791.1	294.2	791.8	268.0	18:15	791.1	335.6	764.7	312.87
6:30	791.1	304.4	791.8	261.9	18:30	791.1	336.2	765.2	314.30
6:45	791.1	309.4	791.0	265.6	18:45	791.1	333.1	760.0	309.99
7:00	791.1	308.7	791.5	274.1	19:00	791.1	327.6	764.3	310.44
7:15	791.1	305.3	793.8	280.3	19:15	791.1	326.2	735.7	306.59
7:30	791.1	301.7	791.0	282.6	19:30	791.1	322.7	735.4	307.16
7:45	791.1	295.4	790.4	270.7	19:45	791.1	317.4	735.0	298.87
8:00	791.1	289.1	790.4	272.3	20:00	791.1	312.2	732.4	303.00
8:15	791.1	290	790.3	277.3	20:15	791.1	308.9	735.7	303.97
8:30	791.1	290.5	790.3	271.5	20:30	791.1	306.5	732.6	310.70
8:45	791.1	287.2	788.6	274.3	20:45	791.1	299.7	730.7	300.52
9:00	791.1	288	786.7	277.3	21:00	791.1	297.6	730.7	283.95
9:15	791.1	286.8	790.8	277.2	21:15	791.1	294.5	728.1	273.54
9:30	791.1	287.9	789.5	263.5	21:30	791.1	290.3	732.2	269.89
9:45	791.1	288.7	787.8	275.0	21:45	791.1	283.3	725.1	263.59
10:00	791.1	289	789.1	275.4	22:00	791.1	278.7	734.0	255.62
10:15	791.1	278.3	798.1	274.1	22:15	791.1	272.3	731.3	253.18
10:30	791.1	272.7	800.1	275.4	22:30	791.1	272.4	727.5	241.89
10:45	791.1	274.3	796.7	270.4	22:45	791.1	265.5	728.4	235.70
11:00	791.1	271.9	797.7	272.9	23:00	791.1	267.5	732.5	235.52
11:15	791.1	272.1	799.7	269.6	23:15	791.1	261.8	728.6	242.77
11:30	791.1	274.6	795.6	280.4	23:30	791.1	263.1	732.1	242.55
11:45	791.1	274.6	799.9	283.0	23:45	791.1	260.4	735.2	239.92

Yours faithfully Kinley Wangmo

Coincidental peak load of Day(Last year):	
297.58 MW	1-Nov-16
Maximum Load till date:	
344.02 MW	18-Mar-17



འབྲུག་རྒྱལ་ཁོ་ལས་འཛིན།

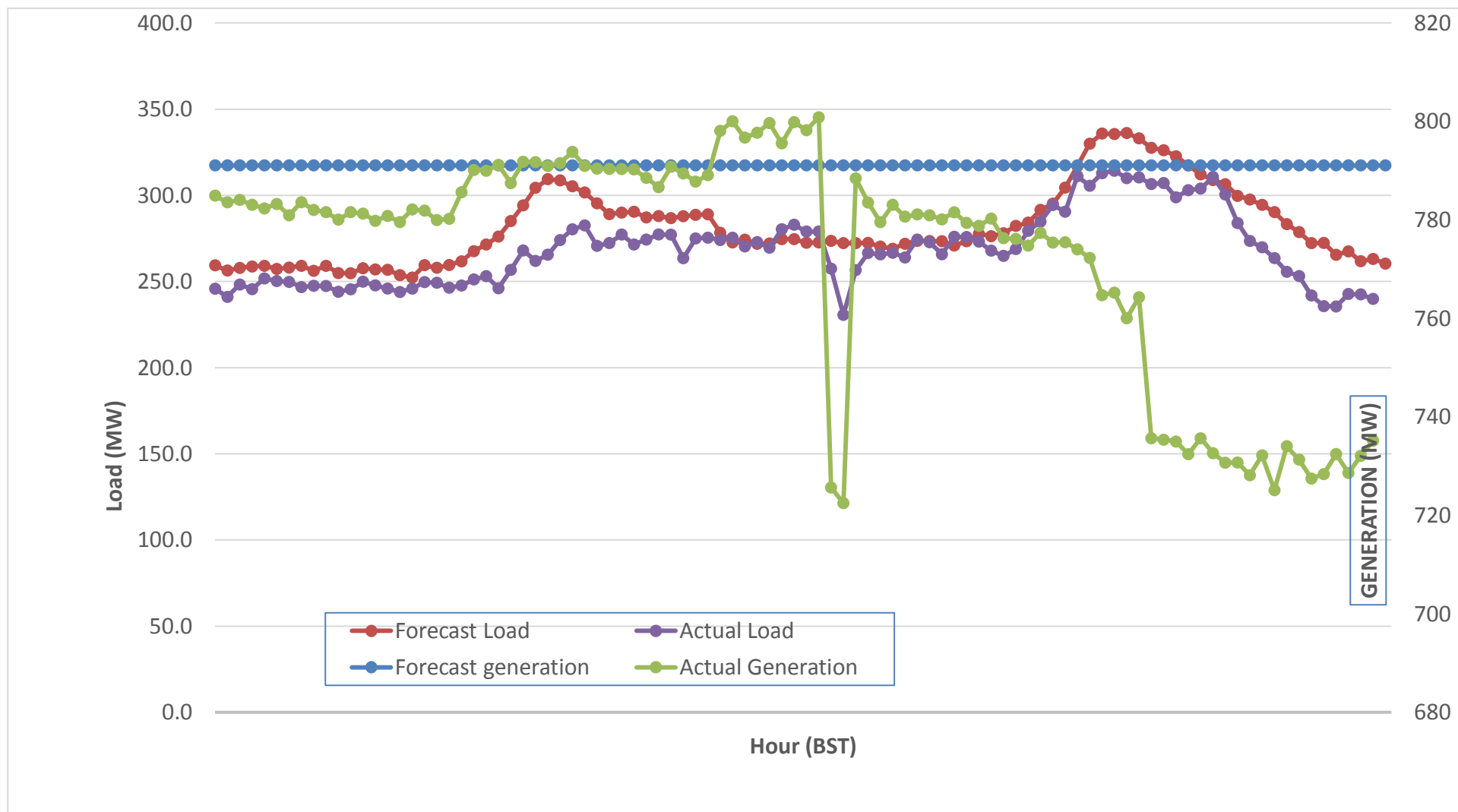
Bhutan Power Corporation Ltd.  
 Bhutan Power System Operator  
 Thimphu: Bhutan



Message No.: Enter your message number  
 From: Shift In-charge, Control Room

Date: 2-Nov-17  
 Time: 10:56

Forecast Generation & Load with Actual Generation & Load (01-Nov-2017).



Yours faithfully, Kinley Wangmo

Peak Co-incident Generation(01-Nov-2017).

MW  
844.72

Coincidental peak load of Day(Last year):

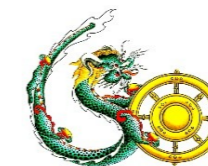
297.58 MW	1-Nov-16
Maximum Load till date:	
344.02 MW	18-Mar-17

Telephone: +975-02335631; Fax: +975-02335632; Email: bhutansystemoperator@bpc.bt; www.bpc.bt



འབྲུག་གྲོག་མེ་ལས་འཛིན།

Bhutan Power Corporation Ltd.  
Bhutan Power System Operator  
Thimphu: Bhutan



**Message No.:** Enter your message number  
**From:** Shift In-charge, Control Room

**Date:** 2-Nov-17  
**Time:** 10:56

**To**  
Managing Director, BPC. Email: gemtshering@bpc.bt  
Director, O&MD, DGPC. Email: director.omid@drukgreen.com  
General Manager, TD, BPC. Email: thinleygyeltshen@bpc.bt  
General Manager, DCSD, BPC. Email: sandeprai@bpc.bt  
General Manager, BPSO, BPC. Email: ujjwaldahal@bpc.bt

**Sub:** Load Generation Balance Report of Today (02-Nov-2017).

Hours (BST)	Forecast		Actual	
	Generation	Load	Generation	Load
0:00	754.9	258.3	731.3	216.38
0:15	754.9	251	730.0	217.00
0:30	754.9	253.8	732.1	212.55
0:45	757.7	255.7	731.7	215.68
1:00	757.7	260.1	730.7	218.38
1:15	764.1	257.6	730.4	213.31
1:30	764.1	259.5	730.2	219.95
1:45	764.1	259.3	732.0	221.54
2:00	764.1	257.5	733.0	219.49
2:15	770.5	259.5	739.4	223.04
2:30	770.5	255.4	742.0	222.65
2:45	770.5	255.9	740.9	219.65
3:00	770.5	257.3	743.5	220.56
3:15	770.5	257.4	739.2	223.04
3:30	770.5	255.4	738.6	211.16
3:45	770.5	255.4	741.5	223.77
4:00	770.5	253.3	740.4	218.08
4:15	770.5	259.7	745.1	225.73
4:30	770.5	256.9	746.5	220.00
4:45	770.5	259.6	744.9	213.27
5:00	770.5	262.3	745.0	223.59
5:15	770.5	267	747.8	219.88
5:30	770.5	270.9	745.4	232.82
6:45	770.5	275.6	747.6	239.87
6:00	775.3	285.3	747.2	244.15
6:15	775.3	296	749.3	250.13
6:30	775.3	306.9	749.8	278.97
6:45	775.3	311.8	750.0	284.37
7:00	775.3	310.1	750.8	276.01
7:15	775.3	307	748.0	279.17
7:30	775.3	303.8	751.4	275.45
7:45	775.3	297.2	748.7	258.72
8:00	775.3	290.2	746.0	255.50
8:15	775.3	289.4	766.4	253.70
8:30	775.3	288.9	778.4	252.19
8:45	775.3	287.2	777.0	240.26
9:00	775.3	285.1	774.8	242.20

297.58	2-Nov-17
--------	----------

Yours faithfully, Kinley Wangmo

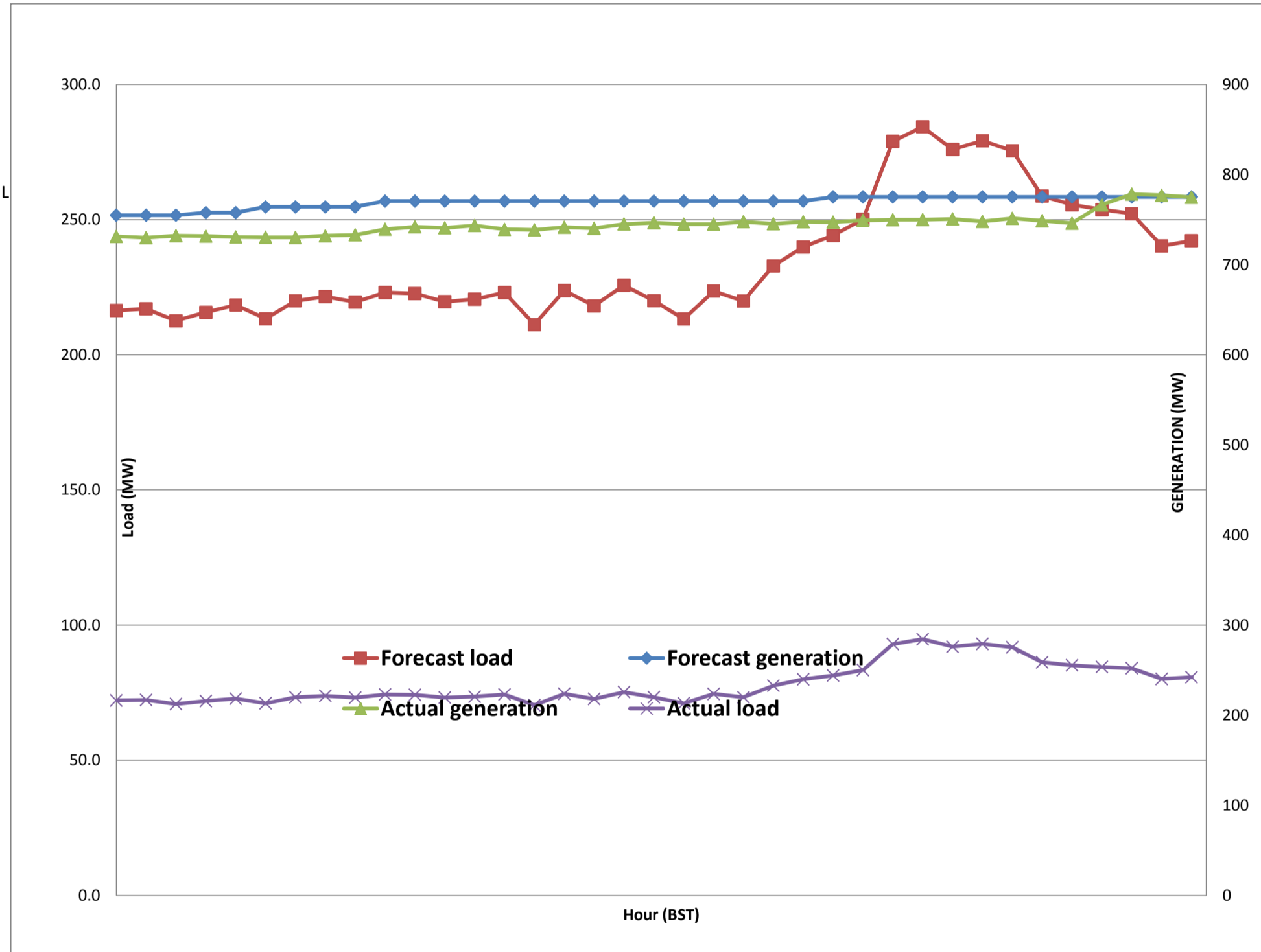
<b>Maximum Load till date:</b>	
344.02 MW	18-Mar-17



Message No.: Enter your message number  
 From: Shift In-charge, Control Room

11/2/2017 10:59 2-Nov-17  
 10:56

Forecast Generation & Load with Actual Generation & Load of Today from 00:00hrs to 09:00hrs(02-Nov-2017).





འབྲུག་གྲོག་མེ་ལས་འཛུགས།  
**Bhutan Power Corporation Ltd.**  
**Bhutan Power System Operator**  
 Thimphu: Bhutan



**Message No.:** Enter your message number  
**From:** Shift In-charge, Control Room  
**Date:** 2-Nov-17  
**Time:** 10:56

**To**

Managing Director, BPC. Email: gemtshering@bpc.bt  
 Director, O&MD, DGPC. Email: director.umd@drukgreen.com  
 General Manager, TD, BPC. Email: ktobgye@bpc.bt  
 General Manager, BPSO, BPC. Email: ujjwaldahal@bpc.bt  
 Advisor, BPC. Email: bharattamang@bpc.bt

**Sub:** Load Generation Balance Report of Tomorrow (03-Nov-2017).

Hours (BST)	Forecast		Hours (BST)	Forecast	
					Load
0:00	770.6	255.80	12:00	770.6	275.1
0:15	770.6	249.60	12:15	770.6	273.4
0:30	770.6	252.50	12:30	770.6	273.1
0:45	770.6	253.80	12:45	770.6	267.4
1:00	770.6	257.70	13:00	770.6	267.4
1:15	770.6	255.30	13:15	770.6	267.7
1:30	770.6	256.20	13:30	770.6	268.6
1:45	770.6	255.40	13:45	770.6	267.3
2:00	770.6	254.80	14:00	770.6	269.3
2:15	770.6	256.20	14:15	770.6	269.6
2:30	770.6	251.50	14:30	770.6	270.8
2:45	770.6	252.70	14:45	770.6	268.5
3:00	770.6	253.80	15:00	770.6	268
3:15	770.6	254.30	15:15	770.6	271.2
3:30	770.6	253.40	15:30	770.6	274.5
3:45	770.6	252.80	15:45	770.6	272.3
4:00	770.6	251.90	16:00	770.6	270.7
4:15	770.6	256.70	16:15	770.6	274.4
4:30	770.6	254.70	16:30	770.6	279.3
4:45	770.6	256.20	16:45	770.6	284.7
5:00	770.6	259.40	17:00	770.6	288.6
5:15	770.6	262.40	17:15	770.6	299.4
5:30	770.6	266.60	17:30	770.6	306
6:45	770.6	268.10	17:45	770.6	321.1
6:00	770.6	278.40	18:00	770.6	325.8
6:15	771.7	288.40	18:15	771.7	326
6:30	771.7	296.90	18:30	771.7	326.4
6:45	771.7	300.40	18:45	771.7	323
7:00	771.7	302.00	19:00	771.7	321
7:15	771.7	300.10	19:15	771.7	319.7
7:30	771.7	298.50	19:30	771.7	316.2
7:45	771.7	291.80	19:45	771.7	308
8:00	771.7	286.10	20:00	771.7	306.3
8:15	771.7	286.10	20:15	771.7	303
8:30	771.7	285.50	20:30	771.7	302.1
8:45	771.7	284.40	20:45	771.7	295.3
9:00	771.7	283.40	21:00	771.7	289.6
9:15	771.7	283.10	21:15	771.7	285.6
9:30	771.7	279.70	21:30	771.7	281.6
9:45	771.7	283.00	21:45	771.7	275.8
10:00	771.7	284.10	22:00	771.7	271.4
10:15	770.6	277.10	22:15	771.7	265.8
10:30	770.6	274.40	22:30	771.7	262.2
10:45	770.6	273.60	22:45	771.7	256
11:00	770.6	273.40	23:00	771.7	256.1
11:15	770.6	271.20	23:15	771.7	255
11:30	770.6	273.00	23:30	771.7	255
11:45	770.6	274.80	23:45	771.7	251.5

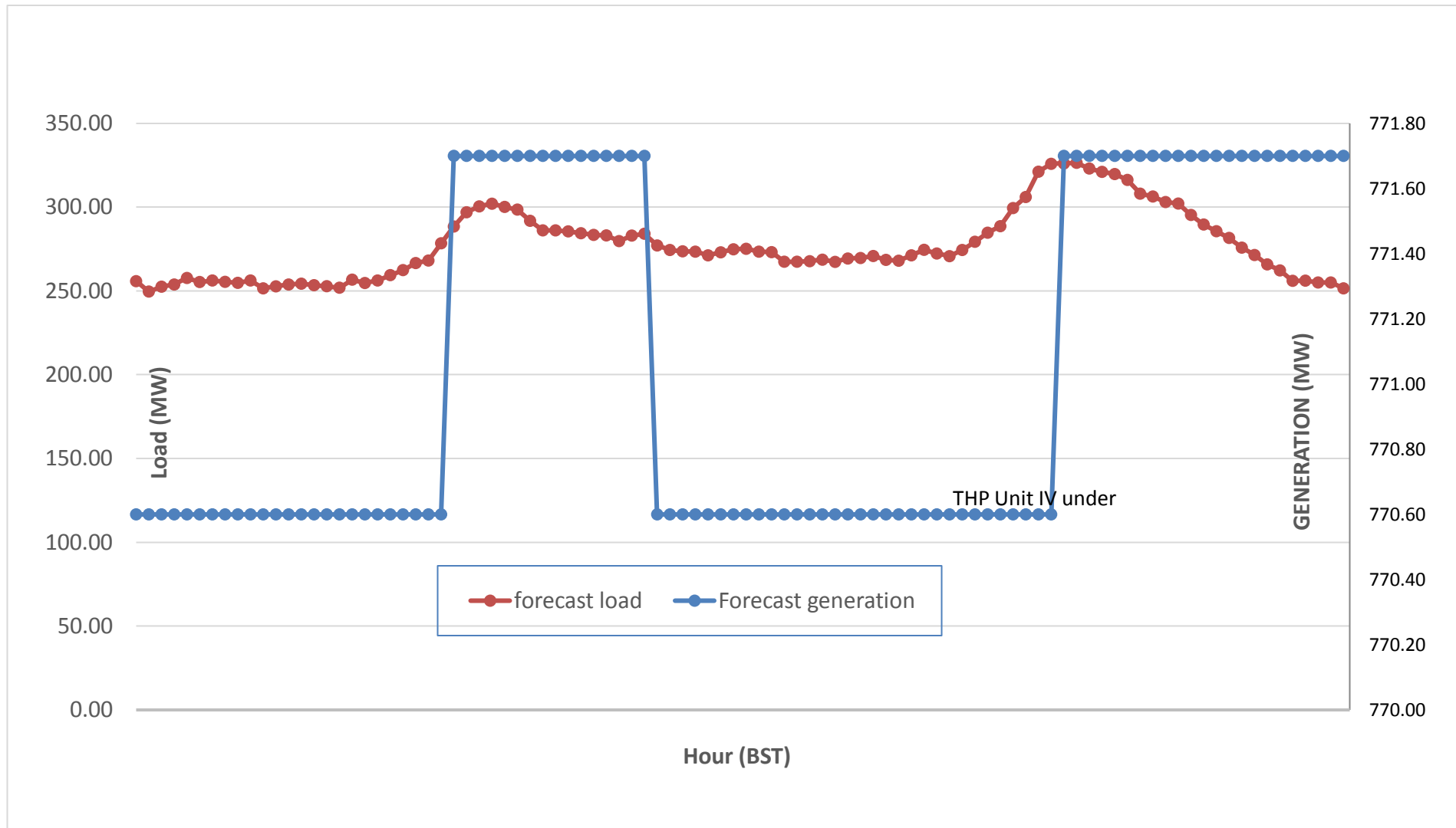
Yours faithfully,  
 Kinley Wangmo



Message No.: Enter your message number  
 From: Shift In-charge, Control Room

Date: 2-Nov-17  
 Time: 10:56

**Scheduled Generation & Load Forecast for Tomorrow (03-Nov-2017).**



Yours faithfully,  
 Kinley Wangmo

