



འབྲུག་གློག་ཐོ་ལས་འཛིན།

Bhutan Power Corporation Ltd.
Bhutan Power System Operator
Thimphu: Bhutan



Message No.: Enter your message number
From: Shift In-charge, Control Room

Date: 28-Oct-17
Time: 10:01

To
Managing Director, BPC. Email: gemtshering@bpc.bt
Director, O&MD, DGPC. Email: director.omb@drukgreen.com
General Manager, TD, BPC. Email: ktobgye@bpc.bt
General Manager, DCSD, BPC. Email: sandeeprai@bpc.bt
General Manager, BPSO, BPC. Email: ujjwaldahal@bpc.bt

Sub: Load Generation Balance Report of Yesterday (27-Oct-2017).

Hours (BST)	Forecast		Actual		Hours (BST)	Forecast		Actual	
	Generation	Load	Generation	Load		Generation	Load	Generation	Load
0:00	895	251.2	843.3	274.3	12:00	895	266.7	839.2	259.99
0:15	895	248	844.5	267.2	12:15	895	271	873.9	270.27
0:30	895	249.7	840.5	267.9	12:30	895	270.2	837.7	280.53
0:45	895	245	846.3	267.3	12:45	895	264.3	838.7	278.25
1:00	895	247.3	845.0	266.5	13:00	895	261.5	832.9	287.66
1:15	895	245	839.4	267.5	13:15	895	262.4	824.9	279.61
1:30	895	245.9	843.9	272.8	13:30	895	262.7	821.1	277.09
1:45	895	246.2	850.6	266.5	13:45	895	260.9	823.9	259.35
2:00	895	244.6	850.1	265.0	14:00	895	260.3	823.8	280.73
2:15	895	247.3	847.3	261.5	14:15	895	260.6	829.3	280.29
2:30	895	246	831.1	255.3	14:30	895	257.3	812.5	288.63
2:45	895	246.4	827.0	254.2	14:45	895	259.7	813.2	281.66
3:00	895	248.2	827.7	252.3	15:00	895	258.6	810.9	284.33
3:15	895	244.9	830.1	247.5	15:15	895	261.6	811.2	289.06
3:30	895	247.7	829.2	248.7	15:30	895	261.5	810.0	285.10
3:45	895	242.5	828.0	252.2	15:45	895	258.1	811.3	287.34
4:00	895	241.5	830.4	251.0	16:00	895	262.2	809.0	291.48
4:15	895	246.9	830.6	250.3	16:15	895	264.5	810.5	292.98
4:30	895	246	837.5	251.1	16:30	895	268.2	810.2	295.27
4:45	895	248	833.2	258.3	16:45	895	271.8	810.9	298.36
5:00	895	249.1	825.3	259.2	17:00	895	277.5	814.6	301.03
5:15	895	253.6	831.7	265.7	17:15	895	284.8	806.1	305.27
5:30	895	258.2	828.8	261.8	17:30	895	296.8	808.6	318.42
6:45	895	264.5	835.0	261.5	17:45	895	309.2	809.3	333.44
6:00	895	271.2	833.2	277.9	18:00	895	314.5	805.3	344.08
6:15	895	282.4	834.0	293.1	18:15	895	322	809.1	345.63
6:30	895	287.3	828.9	298.0	18:30	895	318.8	805.8	348.42
6:45	895	294.1	833.1	303.9	18:45	895	316.5	807.2	342.72
7:00	895	293	844.2	299.6	19:00	895	313.6	820.8	340.34
7:15	895	289.5	826.9	296.5	19:15	895	307.2	808.2	338.41
7:30	895	287.1	824.5	294.6	19:30	895	306	807.3	333.96
7:45	895	279.6	825.2	287.8	19:45	895	298.8	809.1	329.28
8:00	895	274.8	823.5	282.4	20:00	895	293.3	811.4	325.54
8:15	895	276	822.8	279.3	20:15	895	288.4	809.6	322.35
8:30	895	276.4	820.9	281.2	20:30	895	289.1	810.2	318.84
8:45	895	275.2	823.8	280.7	20:45	895	283.2	812.7	305.73
9:00	895	271	821.8	284.0	21:00	895	279.3	810.5	309.25
9:15	895	275	821.9	286.7	21:15	895	276.2	810.0	303.09
9:30	895	275.6	827.9	287.8	21:30	895	270.6	815.2	292.88
9:45	895	275	812.9	284.8	21:45	895	269	815.1	290.66
10:00	895	269.7	825.4	289.6	22:00	895	267.2	816.7	282.02
10:15	895	265.5	819.5	280.8	22:15	895	261.4	821.1	278.53
10:30	895	266.5	822.2	290.0	22:30	895	258.5	822.1	270.75
10:45	895	267.4	820.7	294.2	22:45	895	255.6	823.7	275.69
11:00	895	267.2	825.9	285.1	23:00	895	253.7	823.1	270.58
11:15	895	268.4	838.9	289.4	23:15	895	252.4	826.5	267.40
11:30	895	269.2	842.6	288.9	23:30	895	250.5	821.9	267.32
11:45	895	268	843.6	272.2	23:45	895	248.7	822.7	265.07

Yours faithfully
Karma Choden

Coincidental peak load of Day(Last year):	
281.68 MW	27-Oct-16
Maximum Load till date:	
344.02 MW	18-Mar-17



འབྲུག་རྒྱལ་ཁོ་ལས་འཛིན།

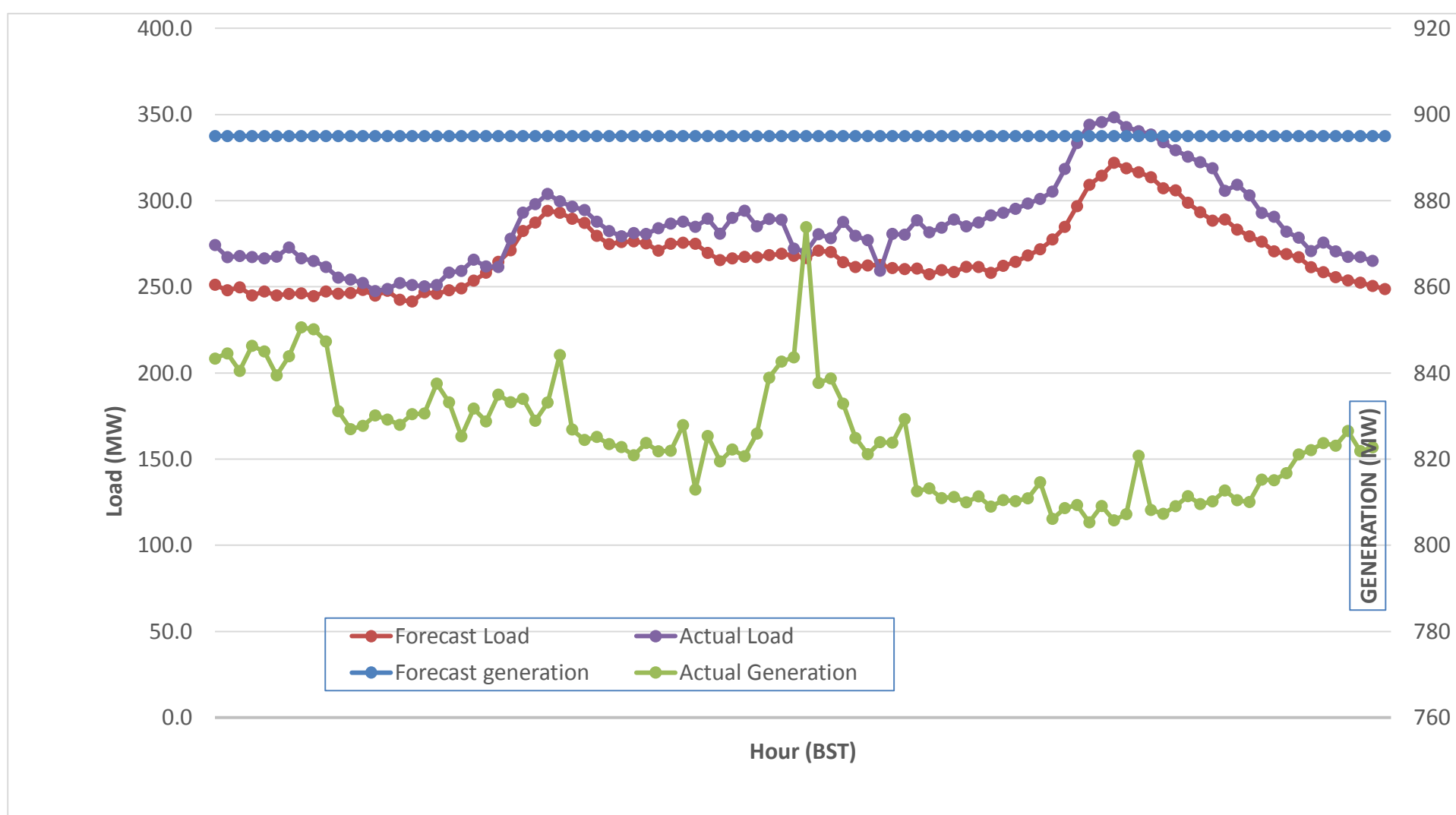
Bhutan Power Corporation Ltd.
 Bhutan Power System Operator
 Thimphu: Bhutan



Message No.: Enter your message number
 From: Shift In-charge, Control Room

Date: 28-Oct-17
 Time: 10:01

Forecast Generation & Load with Actual Generation & Load (27-Oct-2017).



Yours faithfully,
 Karma Choden

	MW	Coincidental peak load of Day(Last year):	
Peak Co-incidental Generation(27-Oct-2017).	873.86	281.68 MW	27-Oct-16
Peak Co-incidental Load(27-Oct-2017).	348.42		
		Maximum Load till date:	
		344.02 MW	18-Mar-17

Telephone: +975-02335631; Fax: +975-02335632; Email: bhutansystemoperator@bpc.bt; www.bpc.bt



འབྲུག་གྲོག་མེ་ལས་འཛིན།

Bhutan Power Corporation Ltd.
Bhutan Power System Operator
Thimphu: Bhutan



Message No.: Enter your message number
From: Shift In-charge, Control Room

Date: 28-Oct-17
Time: 10:01

To
Managing Director, BPC. Email: gemtshering@bpc.bt
Director, O&MD, DGPC. Email: director.omid@drukgreen.com
General Manager, TD, BPC. Email: thinleygyeltshen@bpc.bt
General Manager, DCSD, BPC. Email: sandeprai@bpc.bt
General Manager, BPSO, BPC. Email: ujjwaldahal@bpc.bt

Sub: Load Generation Balance Report of Today (28-Oct-2017).

Hours (BST)	Forecast		Actual	
	Generation	Load	Generation	Load
0:00	861.2	250	819.0	263.20
0:15	861.2	247.6	817.1	262.02
0:30	861.2	249.9	816.0	262.45
0:45	861.2	245.8	818.2	264.91
1:00	861.2	247.6	817.8	267.72
1:15	861.2	247.2	816.6	263.08
1:30	861.2	247.4	815.6	256.58
1:45	861.2	247.4	816.4	262.42
2:00	861.2	246.1	816.0	260.90
2:15	861.2	247.6	815.1	263.86
2:30	861.2	246.1	817.8	264.61
2:45	861.2	247.2	818.4	265.73
3:00	861.2	248.9	817.5	267.24
3:15	861.2	246.9	817.9	267.03
3:30	861.2	246.1	816.2	269.34
3:45	861.2	244	814.7	267.81
4:00	861.2	244.5	815.5	267.01
4:15	861.2	249.6	816.4	262.94
4:30	861.2	249	815.3	267.80
4:45	861.2	250.4	815.9	262.40
5:00	861.2	251.6	816.1	264.54
5:15	861.2	256	815.0	277.25
5:30	861.2	260.8	817.7	285.05
5:45	861.2	267.5	815.2	279.48
6:00	861.2	275.3	814.6	288.80
6:15	861.2	286.3	814.4	297.10
6:30	861.2	293.3	814.3	307.73
6:45	861.2	300.3	815.3	307.55
7:00	861.2	299.3	812.7	306.65
7:15	861.2	294.9	813.9	309.02
7:30	861.2	292.3	815.4	301.56
7:45	861.2	284.2	814.7	299.05
8:00	861.2	281	814.1	294.66
8:15	861.2	282.1	813.4	294.29
8:30	861.2	281.3	814.1	296.88
8:45	861.2	280.5	815.4	296.88
9:00	864.3	278.1	815.4	297.15

Coincidental peak load of Day(Last year):	
271.13 MW	28-Oct-17

Maximum Load till date:	
344.02 MW	18-Mar-17

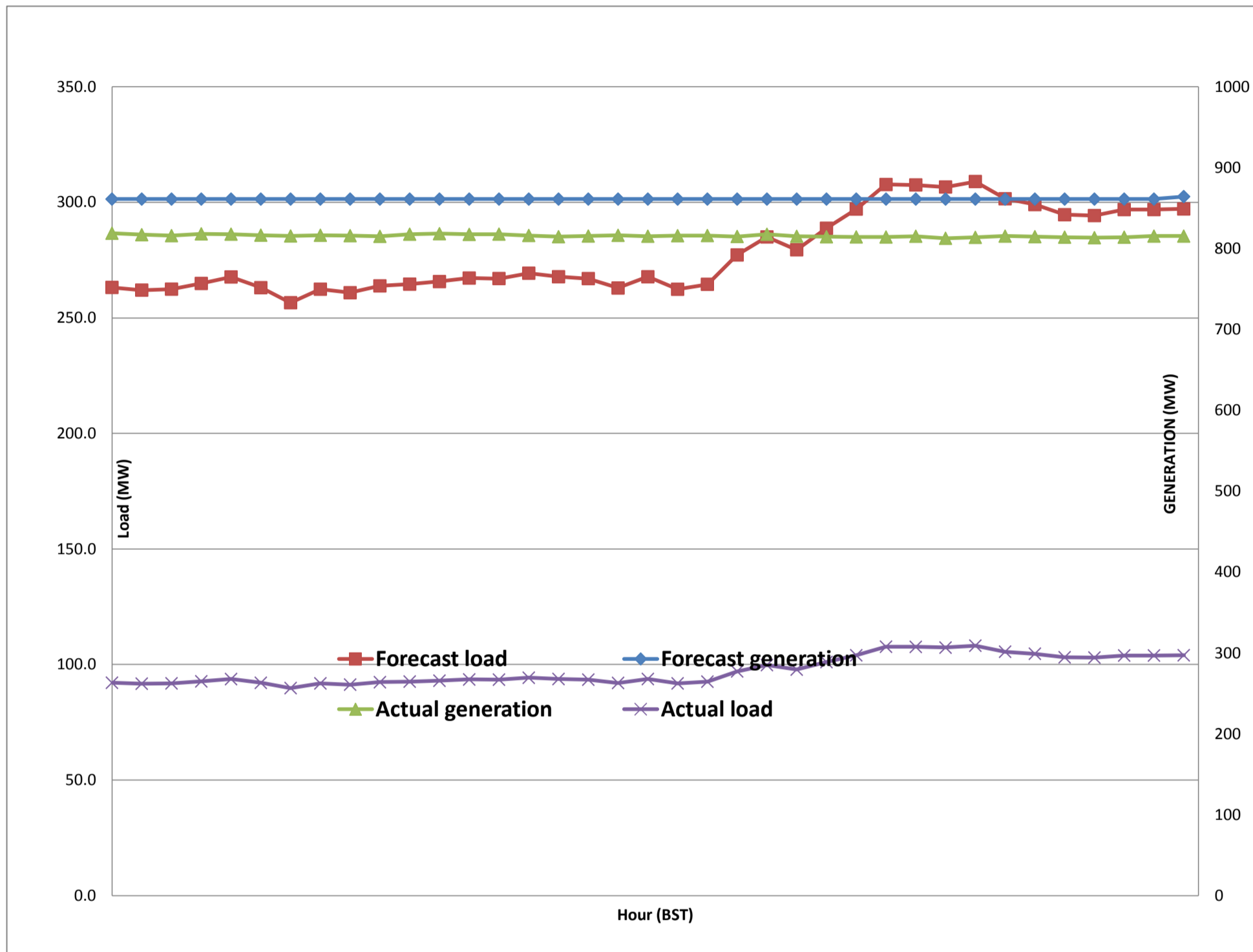
Yours faithfully,
Karma Choden



Message No.: Enter your message number
 From: Shift In-charge, Control Room

28-Oct-17
 10:01

Forecast Generation & Load with Actual Generation & Load of Today from 00:00hrs to 09:00hrs(28-Oct-2017).



Yours faithfully
 Karma Choden



འབྲུག་གྲོགས་ཚེ་ལས་འཛིན།
Bhutan Power Corporation Ltd.
Bhutan Power System Operator
 Thimphu: Bhutan



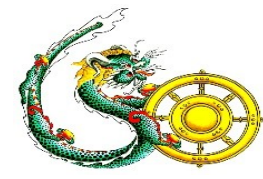
Message No.: Enter your message number **Date:** 28-Oct-17
From: Shift In-charge, Control Room **Time:** 10:01

To
 Managing Director, BPC. Email: gemtshering@bpc.bt
 Director, O&MD, DGPC. Email: director.umd@drukgreen.com
 General Manager, TD, BPC. Email: ktobgye@bpc.bt
 General Manager, BPSO, BPC. Email: ujjwaldahal@bpc.bt
 Advisor, BPC. Email: bharattamang@bpc.bt

Sub: Load Generation Balance Report of Tomorrow (29-Oct-2017).

Hours (BST)	Forecast		Hours (BST)	Forecast	
	Generation	Load		Generation	Load
0:00	808.8	256.00	12:00	808.8	274.7
0:15	808.8	253.60	12:15	808.8	278.9
0:30	808.8	255.00	12:30	808.8	278.9
0:45	808.8	251.90	12:45	808.8	275
1:00	808.8	253.40	13:00	808.8	273.3
1:15	808.8	252.90	13:15	808.8	273.5
1:30	808.8	253.00	13:30	808.8	271.3
1:45	808.8	252.80	13:45	808.8	266
2:00	808.8	251.10	14:00	808.8	271.1
2:15	808.8	251.50	14:15	808.8	271.4
2:30	808.8	248.10	14:30	808.8	269.6
2:45	808.8	249.30	14:45	808.8	270.5
3:00	808.8	250.20	15:00	808.8	270.2
3:15	808.8	248.00	15:15	808.8	274.2
3:30	808.8	247.20	15:30	808.8	275.3
3:45	808.8	246.50	15:45	808.8	271.2
4:00	808.8	245.60	16:00	808.8	268.9
4:15	808.8	250.30	16:15	808.8	271.4
4:30	808.8	251.50	16:30	808.8	275
4:45	808.8	253.20	16:45	808.8	280.4
5:00	808.8	254.70	17:00	808.8	282.7
5:15	808.8	259.20	17:15	808.8	292.1
5:30	808.8	261.20	17:30	808.8	304.7
6:45	808.8	266.80	17:45	808.8	316.6
6:00	808.8	276.30	18:00	808.8	324.6
6:15	808.8	287.50	18:15	808.8	330.3
6:30	808.8	295.50	18:30	808.8	329.4
6:45	808.8	301.10	18:45	808.8	325.2
7:00	808.8	301.50	19:00	808.8	322.6
7:15	808.8	295.50	19:15	808.8	318.9
7:30	808.8	292.90	19:30	808.8	314.9
7:45	808.8	286.20	19:45	808.8	312.3
8:00	808.8	282.60	20:00	808.8	305.7
8:15	808.8	284.10	20:15	808.8	302.1
8:30	808.8	282.30	20:30	808.8	301.7
8:45	808.8	282.70	20:45	808.8	295.3
9:00	808.8	280.30	21:00	808.8	292.2
9:15	808.8	282.70	21:15	808.8	288.5
9:30	808.8	284.10	21:30	808.8	283.4
9:45	808.8	283.50	21:45	808.8	278.6
10:00	808.8	281.30	22:00	808.8	277.3
10:15	808.8	277.40	22:15	808.8	271.3
10:30	808.8	278.20	22:30	808.8	270.8
10:45	808.8	280.30	22:45	808.8	262.8
11:00	808.8	279.60	23:00	808.8	261.7
11:15	808.8	281.10	23:15	808.8	257.8
11:30	808.8	282.10	23:30	808.8	261.6
11:45	808.8	277.30	23:45	774.8	259.3

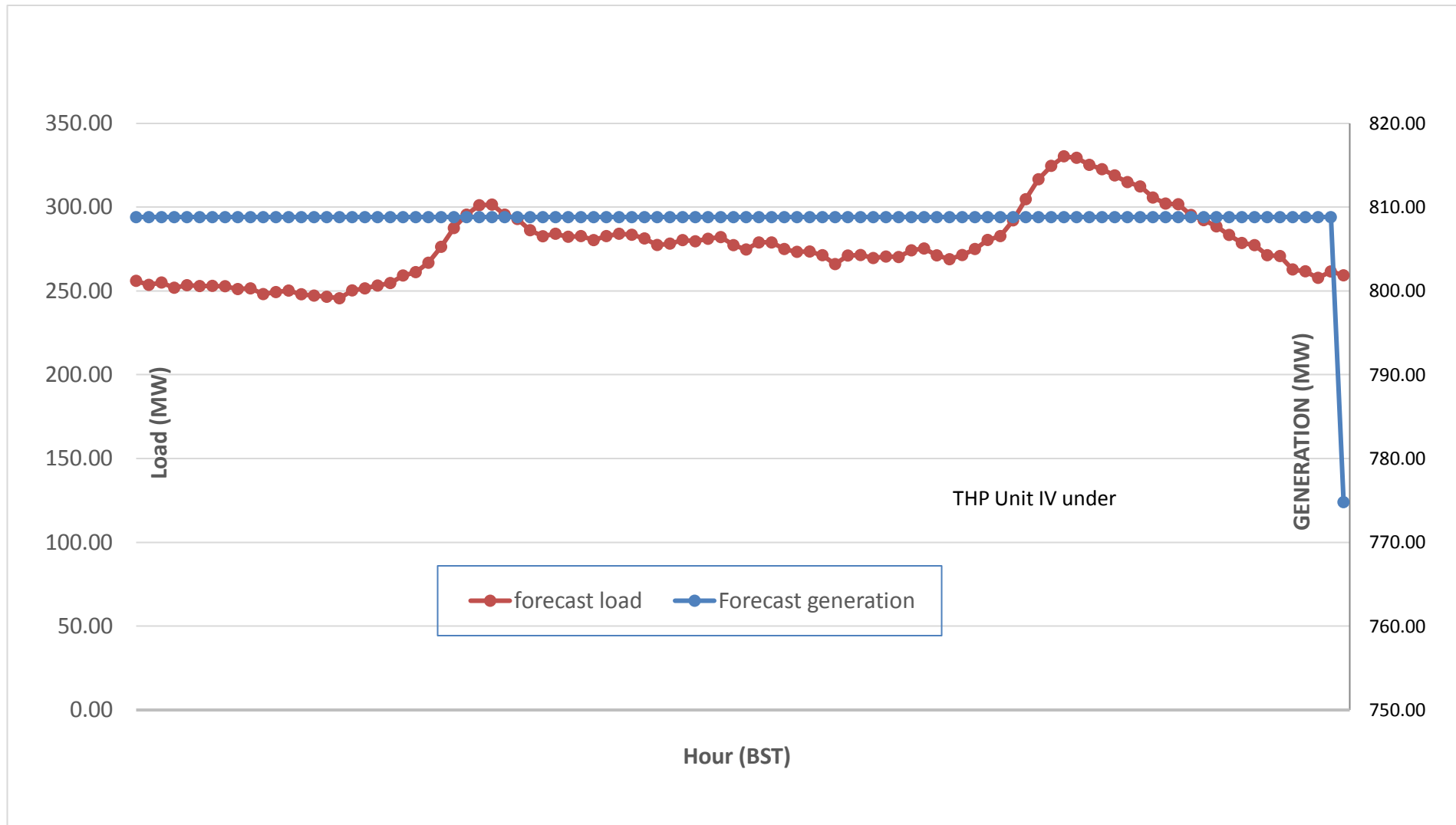
Yours faithfully,
 Karma Choden



Message No.: Enter your message number
 From: Shift In-charge, Control Room

Date: 28-Oct-17
 Time: 10:01

Scheduled Generation & Load Forecast for Tomorrow (29-Oct-2017).



Yours faithfully,
 Karma Choden

	MW
Scheduled Peak Generation(29-Oct-2017).	376.90
Forecast Peak Load(29-Oct-2017).	300.60