



འབྲུག་གླིང་མེ་ལམ་འཛིན།

Bhutan Power Corporation Ltd.
Bhutan Power System Operator
Thimphu: Bhutan



Message No.: Enter your message number
From: Shift In-charge, Control Room

Date: 25-Oct-17
Time: 12:28

To
Managing Director, BPC. Email: gemtshering@bpc.bt
Director, O&MD, DGPC. Email: director.omid@drukgreen.com
General Manager, TD, BPC. Email: ktobgye@bpc.bt
General Manager, DCSD, BPC. Email: sandeeprai@bpc.bt
General Manager, BPSO, BPC. Email: ujjwaldahal@bpc.bt

Sub: Load Generation Balance Report of Yesterday (24-Oct-2017).

Hours (BST)	Forecast		Actual		Hours (BST)	Forecast		Actual	
	Generation	Load	Generation	Load		Generation	Load	Generation	Load
0:00	947.6	255.9	923.7	240.4	12:00	947.6	275.6	891.0	250.89
0:15	947.6	257.4	842.6	242.5	12:15	947.6	276.1	895.1	269.07
0:30	947.6	255.9	892.1	241.8	12:30	947.6	276	895.8	272.15
0:45	947.6	249.9	918.3	240.7	12:45	947.6	275.3	898.0	257.70
1:00	947.6	253.1	920.4	237.5	13:00	947.6	271.3	893.8	263.30
1:15	947.6	251.9	921.4	240.4	13:15	947.6	269.9	898.7	264.99
1:30	947.6	252.3	919.3	238.1	13:30	947.6	267.2	895.4	272.96
1:45	947.6	249.6	919.9	247.8	13:45	947.6	264.1	894.2	273.00
2:00	947.6	249.9	920.3	244.2	14:00	947.6	264	898.9	273.47
2:15	947.6	253.9	921.9	247.3	14:15	947.6	265.6	881.4	274.60
2:30	947.6	250.6	912.1	249.6	14:30	947.6	265.7	882.0	279.59
2:45	947.6	250.9	912.5	247.9	14:45	947.6	267.2	972.3	277.80
3:00	947.6	252.7	909.8	248.0	15:00	947.6	264.7	879.5	277.52
3:15	947.6	251.2	914.7	250.0	15:15	947.6	267.3	890.1	279.93
3:30	947.6	253.2	916.9	252.2	15:30	947.6	269.3	880.5	276.02
3:45	947.6	251.7	910.6	249.2	15:45	947.6	268.2	880.5	262.93
4:00	947.6	250.6	915.6	243.3	16:00	947.6	266.7	874.5	265.84
4:15	947.6	254	912.9	260.7	16:15	947.6	268.5	881.4	274.05
4:30	947.6	253.6	911.5	246.0	16:30	947.6	268.1	886.1	284.20
4:45	947.6	255.4	914.8	243.5	16:45	947.6	271.1	883.0	278.84
5:00	947.6	256.1	913.4	239.8	17:00	947.6	276.1	883.8	284.69
5:15	947.6	260	911.7	244.3	17:15	947.6	285.4	907.0	292.67
5:30	947.6	262.9	912.0	257.5	17:30	947.6	296.9	899.9	303.02
6:45	947.6	269.5	910.7	267.4	17:45	947.6	309.3	904.7	310.24
6:00	947.6	275.4	912.0	272.5	18:00	947.6	318.1	904.6	307.64
6:15	947.6	284.5	932.9	286.8	18:15	947.6	321.9	904.7	323.30
6:30	947.6	286.9	933.2	303.7	18:30	947.6	322.4	903.4	326.83
6:45	947.6	292.6	933.3	306.2	18:45	947.6	319	901.3	319.98
7:00	947.6	293.9	937.2	301.2	19:00	947.6	314.8	901.9	321.52
7:15	947.6	291	933.3	293.9	19:15	947.6	309.9	899.7	321.30
7:30	947.6	286.5	934.4	290.0	19:30	947.6	310.1	905.0	316.38
7:45	947.6	279.1	931.1	281.3	19:45	947.6	302.8	900.7	305.66
8:00	947.6	283.1	930.8	266.0	20:00	947.6	298.6	903.7	293.89
8:15	947.6	284.3	930.4	261.8	20:15	947.6	300.9	889.2	274.05
8:30	947.6	281.6	931.6	265.3	20:30	947.6	298.8	905.2	272.40
8:45	947.6	280.2	935.4	266.1	20:45	947.6	293	901.8	281.90
9:00	947.6	276.3	932.3	265.5	21:00	947.6	290.8	897.7	272.71
9:15	947.6	276.1	931.3	271.7	21:15	947.6	289.4	898.0	268.59
9:30	947.6	278.1	930.9	271.5	21:30	947.6	281.5	902.1	266.97
9:45	947.6	273.3	882.8	270.5	21:45	947.6	279.8	900.8	272.55
10:00	947.6	271.1	887.9	266.3	22:00	947.6	276.4	899.0	270.77
10:15	947.6	268.4	888.6	245.4	22:15	947.6	269	902.8	267.05
10:30	947.6	271.1	891.1	247.3	22:30	947.6	265.9	900.1	257.33
10:45	947.6	272.5	987.3	247.8	22:45	947.6	262.4	898.8	255.46
11:00	947.6	274.7	886.7	241.9	23:00	947.6	261	886.8	252.61
11:15	947.6	277	889.4	235.0	23:15	947.6	259.5	887.5	255.82
11:30	947.6	276.2	886.8	246.2	23:30	947.6	258.5	886.4	253.23
11:45	947.6	273.7	886.7	251.3	23:45	947.6	255.8	887.7	251.05

Yours faithfully
Karma Yangden

Coincidental peak load of Day(Last year):	
279.84MW	24-Oct-16
Maximum Load till date:	
344.02 MW	18-Mar-17



འབྲུག་རྒྱལ་ཁོ་ལས་འཛིན།

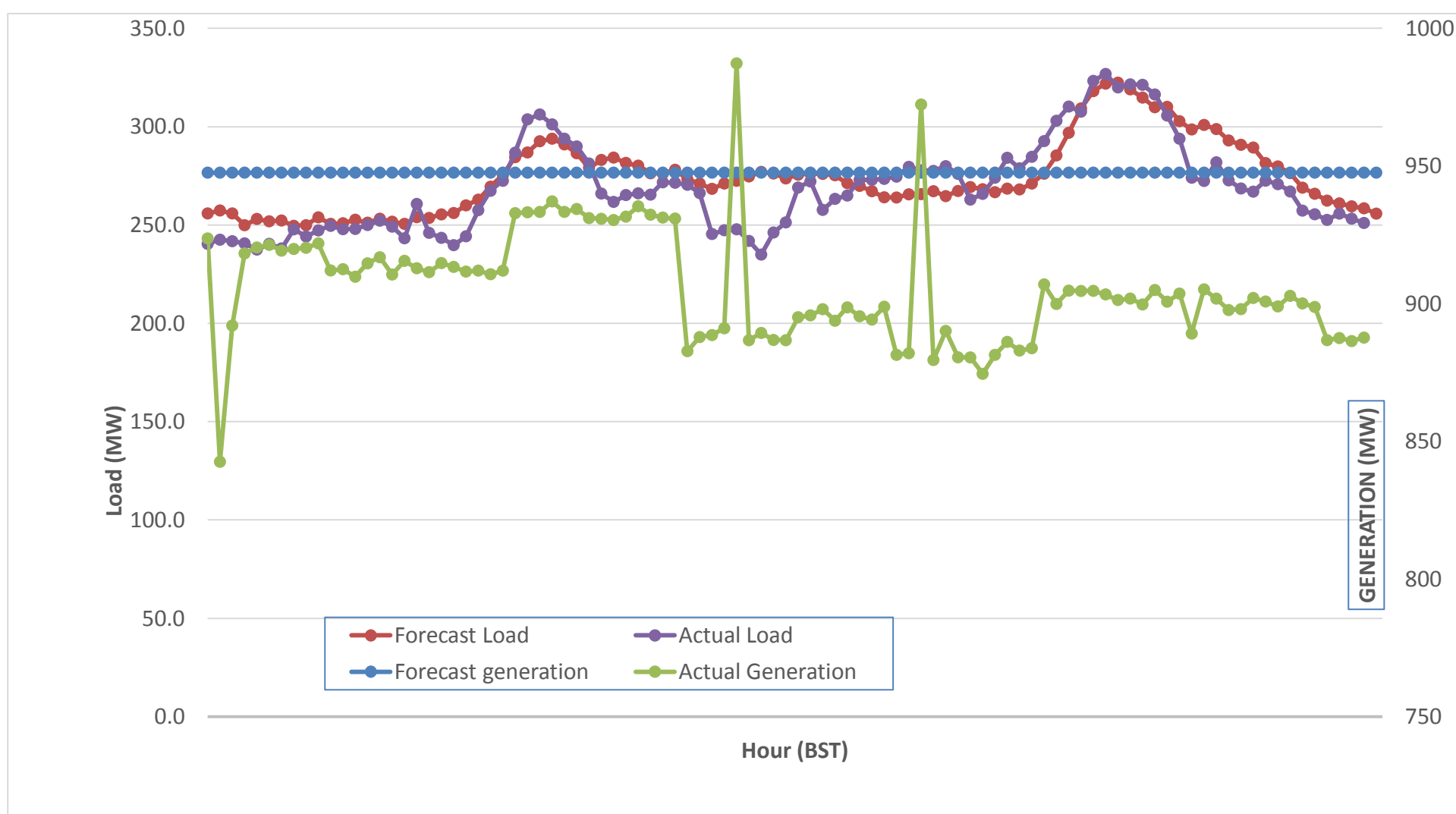
Bhutan Power Corporation Ltd.
 Bhutan Power System Operator
 Thimphu: Bhutan



Message No.: Enter your message number
 From: Shift In-charge, Control Room

Date: 23-Oct-17
 Time: 12:42

Forecast Generation & Load with Actual Generation & Load (22-Oct-2017).



Yours faithfully,
 Karma Yangden

	MW	Coincidental peak load of Day(Last year):	
Peak Co-incident Generation(22-Oct-2017).	987.28	279.84MW	24-Oct-16
Peak Co-incident Load(22-Oct-2017).	326.83		
		Maximum Load till date:	
		344.02 MW	18-Mar-17

Telephone: +975-02335631; Fax: +975-02335632; Email: bhutansystemoperator@bpc.bt; www.bpc.bt



འབྲུག་གློག་མེ་ལས་འཛིན།

Bhutan Power Corporation Ltd.
Bhutan Power System Operator
Thimphu: Bhutan



Message No.: Enter your message number
From: Shift In-charge, Control Room

Date: 25-Oct-17
Time: 12:28

To
Managing Director, BPC. Email: gemtshering@bpc.bt
Director, O&MD, DGPC. Email: director.omid@drukgreen.com
General Manager, TD, BPC. Email: thinleygyeltshen@bpc.bt
General Manager, DCSD, BPC. Email: sandeprai@bpc.bt
General Manager, BPSO, BPC. Email: ujjwaldahal@bpc.bt

Sub: Load Generation Balance Report of Today (25-Oct-2017).

Hours (BST)	Forecast		Actual	
	Generation	Load	Generation	Load
0:00	888	255.5	881.8	254.07
0:15	888	257.2	882.4	241.64
0:30	888	256.9	881.3	238.66
0:45	888	251.2	883.0	243.65
1:00	888	254.3	887.4	239.75
1:15	888	251.6	887.0	239.91
1:30	893.9	253.2	885.3	239.54
1:45	893.9	250.7	887.4	239.64
2:00	895.7	250.7	881.7	235.65
2:15	895.7	253.3	884.2	235.32
2:30	895.7	250.8	888.4	235.79
2:45	895.7	250.7	883.4	238.18
3:00	895.7	251.8	881.0	240.13
3:15	895.7	248.8	879.1	238.31
3:30	895.7	252.3	872.1	234.63
3:45	895.7	251.8	875.6	228.11
4:00	895.7	251	889.1	221.23
4:15	895.7	254.7	893.4	225.49
4:30	895.7	254.7	890.4	235.07
4:45	895.7	257	889.8	232.35
5:00	895.7	255.7	889.2	240.12
5:15	895.7	260.4	890.6	244.19
5:30	895.7	265.2	887.5	246.61
5:45	895.7	268.6	889.1	256.54
6:00	895.7	274.7	890.5	261.89
6:15	895.7	285.1	889.4	275.97
6:30	895.7	287.7	889.4	280.34
6:45	895.7	292.1	888.1	294.97
7:00	895.7	293.2	889.7	288.06
7:15	895.7	292.6	890.5	284.55
7:30	895.7	288.6	887.6	281.98
7:45	895.7	281	886.5	283.96
8:00	895.7	283.3	890.2	260.86
8:15	895.7	283	888.8	271.48
8:30	895.7	280.4	893.2	274.45
8:45	895.7	278.5	875.5	269.09
9:00	895.7	271.7	873.8	272.34

Coincidental peak load of Day(Last year):	
248.27 MW	25-Oct-17

Maximum Load till date:	
344.02 MW	18-Mar-17

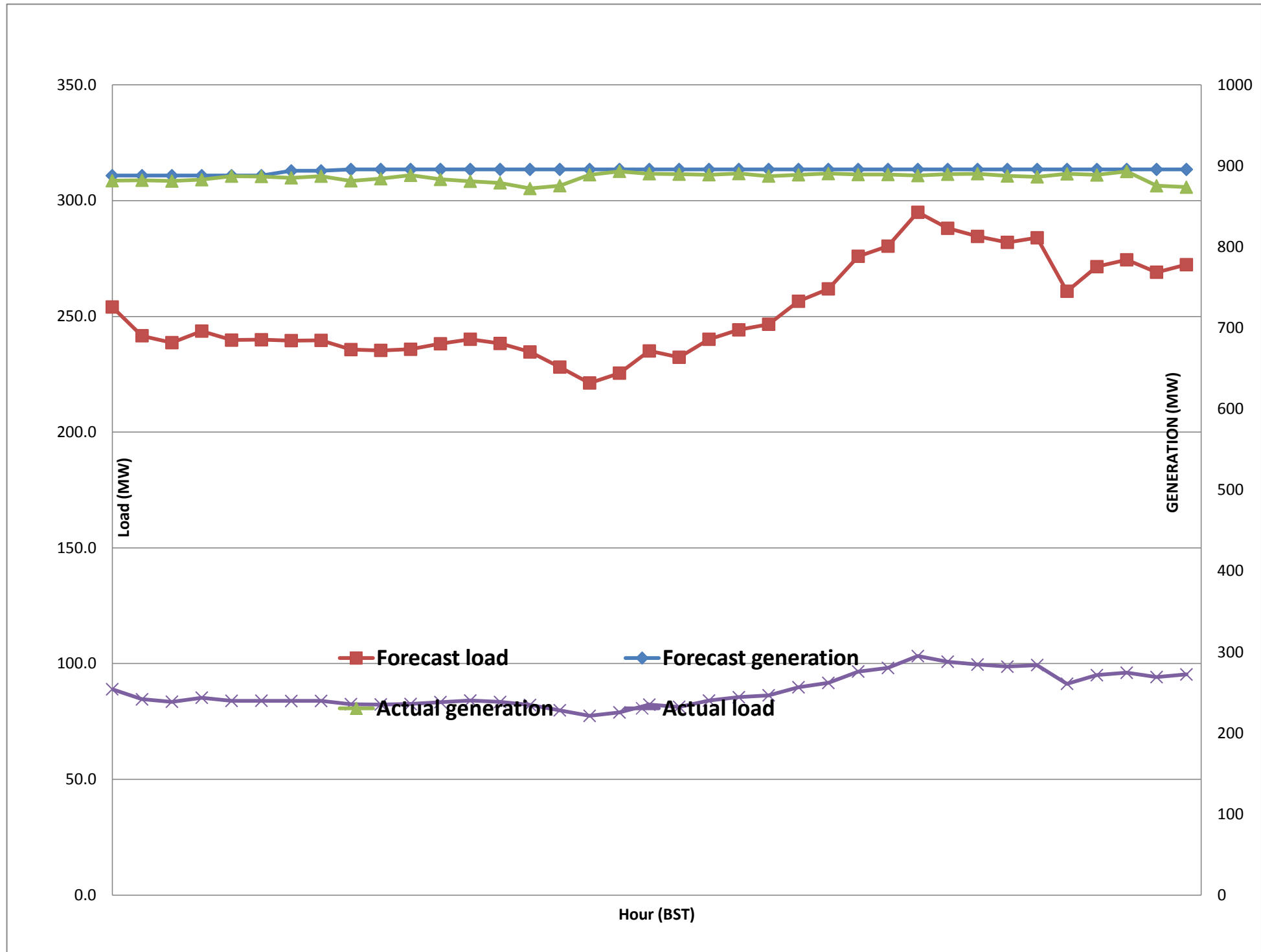
Yours faithfully,
Karma Yangden



Message No.: Enter your message number
 From: Shift In-charge, Control Room

25-Oct-17
 12:28

Forecast Generation & Load with Actual Generation & Load of Today from 00:00hrs to 09:00hrs(25-Oct-2017).



Yours faithfully
 Karma Yangden



འབྲུག་གྲོག་ལས་ཁུངས་ལྷན་ཁག།
Bhutan Power Corporation Ltd.
Bhutan Power System Operator
 Thimphu: Bhutan



Message No.: Enter your message number
From: Shift In-charge, Control Room
Date: 25-Oct-17
Time: 12:28

To

Managing Director, BPC. Email: gemtshering@bpc.bt
 Director, O&MD, DGPC. Email: director.umd@drukgreen.com
 General Manager, TD, BPC. Email: ktobgye@bpc.bt
 General Manager, BPSO, BPC. Email: ujjwaldahal@bpc.bt
 Advisor, BPC. Email: bharattamang@bpc.bt

Sub: Load Generation Balance Report of Tomorrow (26-Oct-2017).

Hours (BST)	Forecast		Hours (BST)	Forecast	
	Generation	Load		Generation	Load
0:00	891.8	252.10	12:00	891.8	262.6
0:15	891.8	251.20	12:15	891.8	268.7
0:30	891.8	252.60	12:30	891.8	269.2
0:45	891.8	247.90	12:45	891.8	264.2
1:00	891.8	250.80	13:00	891.8	265
1:15	891.8	248.00	13:15	891.8	264.8
1:30	891.8	249.80	13:30	891.8	263.6
1:45	891.8	249.60	13:45	891.8	262.6
2:00	891.8	249.30	14:00	891.8	260.8
2:15	891.8	252.00	14:15	891.8	261.9
2:30	891.8	250.60	14:30	891.8	262.1
2:45	891.8	251.00	14:45	891.8	265.5
3:00	891.8	252.10	15:00	891.8	264.3
3:15	891.8	248.20	15:15	891.8	267.2
3:30	891.8	252.20	15:30	891.8	269.1
3:45	891.8	251.70	15:45	891.8	265.4
4:00	891.8	249.70	16:00	891.8	268.3
4:15	891.8	255.00	16:15	891.8	270.9
4:30	891.8	251.70	16:30	891.8	271.9
4:45	891.8	253.30	16:45	891.8	274.6
5:00	891.8	252.90	17:00	891.8	280.9
5:15	891.8	258.00	17:15	891.8	288
5:30	891.8	262.90	17:30	891.8	300.4
6:45	891.8	268.40	17:45	891.8	311.8
6:00	891.8	274.90	18:00	891.8	317.6
6:15	891.8	286.40	18:15	891.8	324.9
6:30	891.8	291.20	18:30	891.8	322.5
6:45	891.8	295.90	18:45	891.8	319.7
7:00	891.8	294.50	19:00	891.8	315.9
7:15	891.8	293.30	19:15	891.8	308.2
7:30	891.8	289.00	19:30	891.8	308
7:45	891.8	280.20	19:45	891.8	299.8
8:00	891.8	279.60	20:00	891.8	294.1
8:15	891.8	278.90	20:15	891.8	289.3
8:30	891.8	276.90	20:30	891.8	292.4
8:45	891.8	276.10	20:45	891.8	287.6
9:00	891.8	270.60	21:00	891.8	283.7
9:15	891.8	274.40	21:15	891.8	281.1
9:30	891.8	275.80	21:30	891.8	274.9
9:45	891.8	273.60	21:45	891.8	273
10:00	891.8	269.00	22:00	891.8	271.6
10:15	891.8	263.50	22:15	891.8	265
10:30	891.8	265.30	22:30	891.8	261
10:45	891.8	265.00	22:45	891.8	257.4
11:00	891.8	265.00	23:00	891.8	256.9
11:15	891.8	266.00	23:15	891.8	255.1
11:30	891.8	267.10	23:30	891.8	253.9
11:45	891.8	265.50	23:45	891.8	252

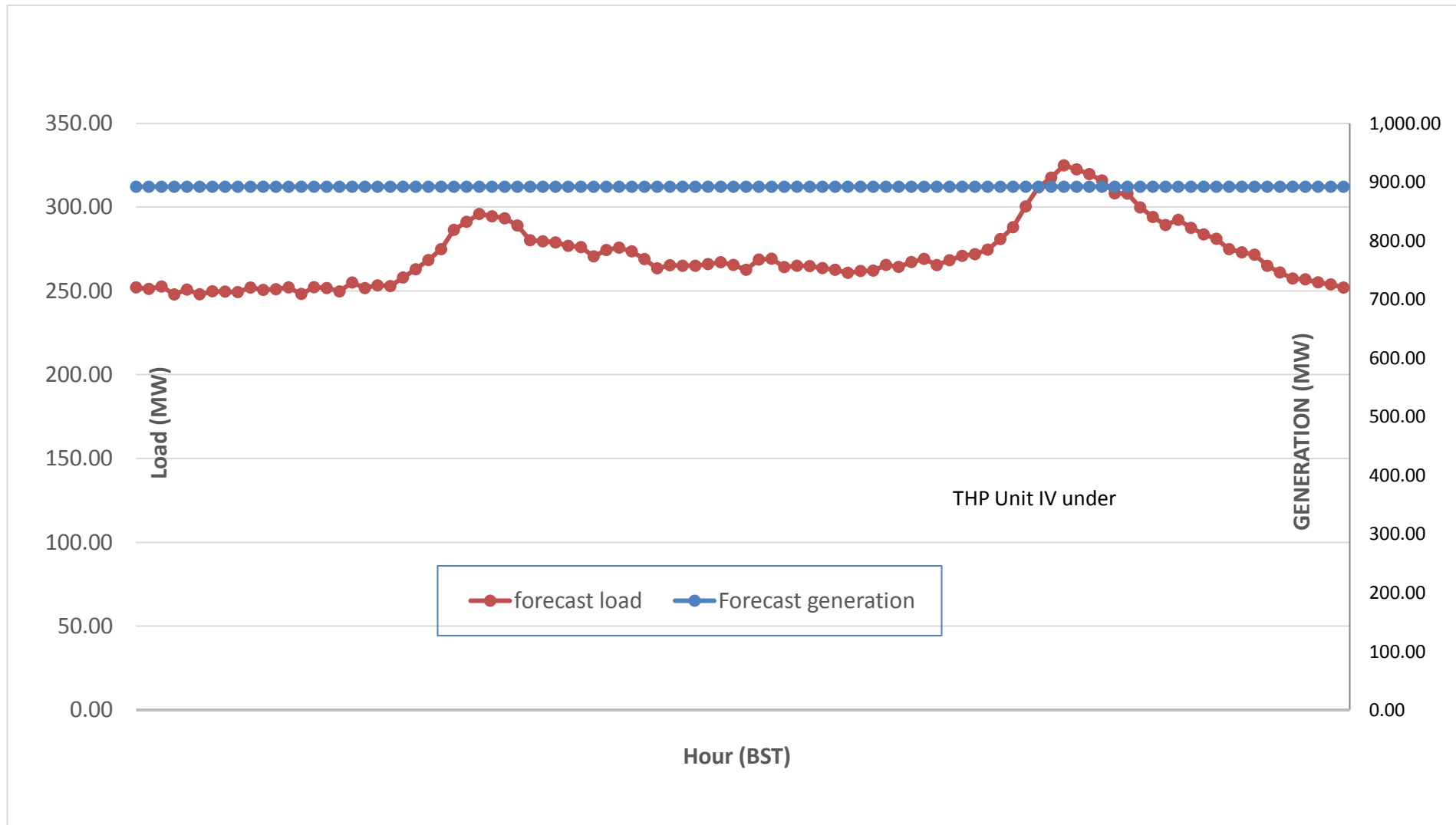
Yours faithfully,
 Karma Yangden



Message No.: Enter your message number
 From: Shift In-charge, Control Room

Date: 25-Oct-17
 Time: 12:28

Scheduled Generation & Load Forecast for Tomorrow (26-Oct-2017).



Yours faithfully,
 Karma Yangden

	MW
Scheduled Peak Generation(26-Oct-2017).	376.90
Forecast Peak Load(26-Oct-2017).	300.60