



འབྲུག་གྲོག་མེ་ལས་འཛིན།

Bhutan Power Corporation Ltd.
Bhutan Power System Operator
Thimphu: Bhutan



Message No.: Enter your message number
From: Shift In-charge, Control Room

Date: 22-Oct-17
Time: 10:19

To
Managing Director, BPC. Email: gemtshering@bpc.bt
Director, O&MD, DGPC. Email: director.umd@drukgreen.com
General Manager, TD, BPC. Email: ktobgye@bpc.bt
General Manager, DCSD, BPC. Email: sandeeprai@bpc.bt
General Manager, BPSO, BPC. Email: ujjwaldahal@bpc.bt

Sub: Load Generation Balance Report of Yesterday (21-Oct-2017).

Hours (BST)	Forecast		Actual		Hours (BST)	Forecast		Actual	
	Generation	Load	Generation	Load		Generation	Load	Generation	Load
0:00	971.4	253.8	959.1	240.9	12:00	971.4	281.3	1123.8	276.84
0:15	971.4	255.4	958.4	243.5	12:15	971.4	283	1126.3	274.19
0:30	971.4	254.8	1005.3	239.4	12:30	971.4	280.6	1125.8	281.22
0:45	971.4	252.7	1005.3	236.4	12:45	971.4	277.5	1125.4	282.21
1:00	971.4	253.5	1005.3	238.0	13:00	971.4	272.7	1126.8	276.84
1:15	971.4	253.4	996.3	230.4	13:15	971.4	269.7	1100.2	269.76
1:30	971.4	255.1	998.7	235.8	13:30	971.4	268	1098.0	271.70
1:45	971.4	255.2	1026.9	236.8	13:45	971.4	266.3	1096.2	269.66
2:00	971.4	254.3	1026.6	245.7	14:00	971.4	264	1096.8	270.66
2:15	971.4	256.7	1028.0	250.7	14:15	971.4	267.7	1099.8	273.96
2:30	971.4	252.9	1026.3	250.2	14:30	971.4	269.8	1100.3	270.76
2:45	971.4	253.9	1026.0	253.3	14:45	971.4	269.4	1098.4	270.94
3:00	971.4	252.7	1025.4	258.1	15:00	971.4	268.1	1100.6	267.39
3:15	971.4	251.8	1027.9	257.2	15:15	971.4	270.7	1087.0	270.56
3:30	971.4	252.4	1028.5	250.1	15:30	971.4	268.9	1089.0	271.33
3:45	971.4	252.7	1029.4	238.8	15:45	971.4	266.3	1085.2	259.97
4:00	971.4	252.9	1028.3	242.1	16:00	971.4	267.6	1086.2	269.93
4:15	971.4	254	1015.9	251.9	16:15	971.4	269.8	1086.1	267.39
4:30	971.4	254.4	1006.6	253.9	16:30	971.4	271.6	1087.6	271.40
4:45	971.4	255.7	1010.7	253.3	16:45	971.4	272.6	1088.8	273.93
5:00	971.4	256.7	1010.9	256.6	17:00	971.4	279.4	1087.3	279.92
5:15	971.4	259.5	1011.2	258.0	17:15	971.4	283.5	1085.5	290.45
5:30	971.4	264.6	1012.0	261.9	17:30	971.4	291.7	1083.8	295.70
6:45	971.4	268.6	1010.2	268.2	17:45	971.4	303.3	1081.7	311.21
6:00	971.4	274.6	1013.4	271.7	18:00	971.4	313	1099.1	316.26
6:15	971.4	288.4	964.4	276.9	18:15	971.4	320.8	1095.2	317.52
6:30	971.4	290.2	966.5	278.9	18:30	971.4	321.6	1097.0	322.11
6:45	971.4	294.1	964.5	296.6	18:45	971.4	316.7	1099.4	318.75
7:00	971.4	292.7	967.6	298.2	19:00	971.4	316.4	1099.3	316.47
7:15	971.4	290.7	989.5	304.5	19:15	971.4	308.4	1084.7	312.15
7:30	971.4	286.2	1048.4	302.8	19:30	971.4	307.2	1081.3	318.95
7:45	971.4	281.3	1059.3	296.1	19:45	971.4	298	1081.0	305.95
8:00	971.4	278.3	1054.8	298.3	20:00	971.4	294.4	1076.1	309.20
8:15	971.4	278	1072.9	284.9	20:15	971.4	296.9	1080.3	305.44
8:30	971.4	276	1077.2	272.4	20:30	971.4	297.2	1076.1	299.73
8:45	971.4	274.3	1074.1	285.7	20:45	971.4	293	1073.3	302.09
9:00	971.4	275.8	1076.6	281.0	21:00	971.4	290.5	1073.5	301.50
9:15	971.4	272.5	1092.8	282.4	21:15	971.4	289.8	1075.9	291.23
9:30	971.4	273.9	1117.8	280.4	21:30	971.4	287.1	1076.8	269.19
9:45	971.4	272.4	1122.4	275.9	21:45	971.4	280	1073.5	283.41
10:00	971.4	273.7	1121.7	283.4	22:00	971.4	276.8	1073.1	279.14
10:15	971.4	269.7	1120.0	280.6	22:15	971.4	269.9	1034.9	281.20
10:30	971.4	273.6	1124.6	280.9	22:30	971.4	268.6	1034.3	278.80
10:45	971.4	273.8	1121.7	282.1	22:45	971.4	264.6	1028.2	274.40
11:00	971.4	276.7	1122.0	286.6	23:00	971.4	262	1028.1	273.76
11:15	971.4	279.4	1123.9	282.0	23:15	971.4	260.6	1030.1	273.91
11:30	971.4	280.2	1122.6	276.3	23:30	971.4	259.7	1032.4	274.72
11:45	971.4	282.4	1124.1	273.6	23:45	971.4	258.4	1031.3	271.80

Yours faithfully-Jangchuk Selden

Coincidental peak load of Day(Last year):	
248.27	21-Oct-16
Maximum Load till date:	
344.02 MW	18-Mar-17



འབྲུག་རྒྱལ་ཁོ་ལས་འཛིན།

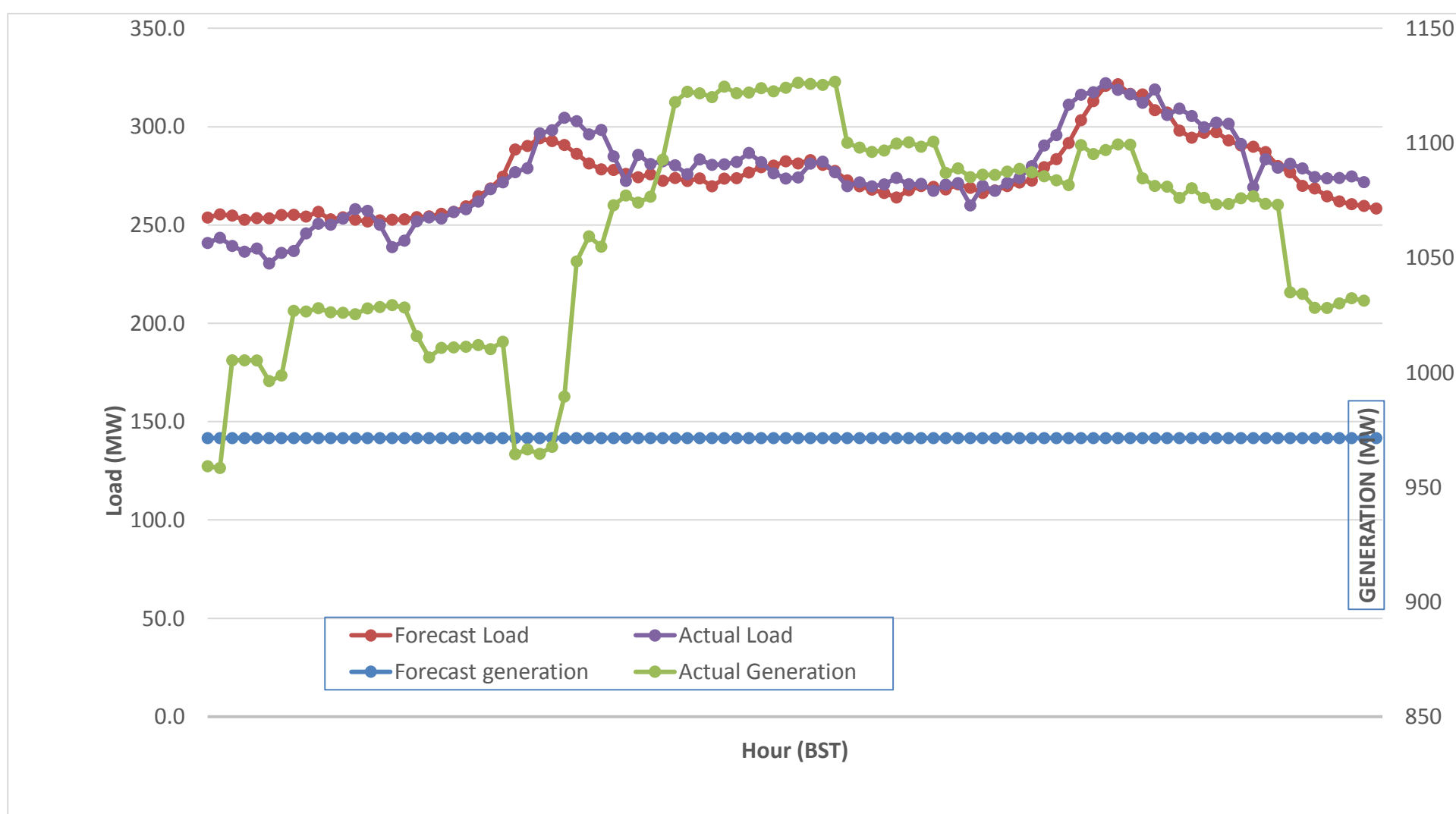
Bhutan Power Corporation Ltd.
 Bhutan Power System Operator
 Thimphu: Bhutan



Message No.: Enter your message number
 From: Shift In-charge, Control Room

Date: 22-Oct-17
 Time: 10:19

Forecast Generation & Load with Actual Generation & Load (21-Oct-2017).



Yours faithfully,
 0

	MW
Peak Co-incident Generation(21-Oct-2017).	1126.75
Peak Co-incident Load(21-Oct-2017).	322.11

Coincidental peak load of Day(Last year):	
248.27	21-Oct-16
Maximum Load till date:	
344.02 MW	18-Mar-17

Telephone: +975-02335631; Fax: +975-02335632; Email: bhutansystemoperator@bpc.bt; www.bpc.bt



ལྷན་སྐྱོང་གི་ལས་འཛིན།

Bhutan Power Corporation Ltd.
Bhutan Power System Operator
Thimphu: Bhutan



Message No.: Enter your message number
From: Shift In-charge, Control Room

Date: 22-Oct-17
Time: 10:19

To
Managing Director, BPC. Email: gemtshering@bpc.bt
Director, O&MD, DGPC. Email: director.omid@drukgreen.com
General Manager, TD, BPC. Email: thinleygyeltshen@bpc.bt
General Manager, DCSD, BPC. Email: sandeprai@bpc.bt
General Manager, BPSO, BPC. Email: ujjwaldahal@bpc.bt

Sub: **Load Generation Balance Report of Today (22-Oct-2017).**

Hours (BST)	Forecast		Actual	
	Generation	Load	Generation	Load
0:00	1045.3	258.2	1029.9	265.45
0:15	1045.3	257.1	1029.8	263.84
0:30	1045.3	256.2	1033.0	267.56
0:45	1045.3	256.9	1013.5	248.42
1:00	1045.3	256.8	992.8	253.79
1:15	1045.3	255.9	996.8	250.18
1:30	1045.3	256.4	994.8	252.25
1:45	1045.3	255.6	996.5	235.44
2:00	1045.3	255.9	995.2	238.19
2:15	1045.3	258.5	997.1	241.53
2:30	1045.3	252.8	996.7	245.34
2:45	1045.3	253.9	991.1	244.72
3:00	1045.3	254.6	990.9	244.90
3:15	1045.3	254.2	993.4	244.71
3:30	1045.3	253.7	994.3	247.12
3:45	1045.3	254	994.0	245.89
4:00	1045.3	253.5	1008.1	250.54
4:15	1045.3	254.7	1007.7	254.90
4:30	1045.3	254.5	1004.7	255.96
4:45	1045.3	257	1020.9	256.79
5:00	1045.3	258.5	1026.1	249.29
5:15	1045.3	261.5	1025.9	254.70
5:30	1045.3	265.2	1022.3	252.04
5:45	1045.3	270.9	1021.5	262.13
6:00	1045.3	276.4	1022.5	270.30
6:15	1045.3	286.6	1006.3	272.41
6:30	1045.3	288.9	1005.3	272.88
6:45	1045.3	292.4	1002.9	283.79
7:00	1045.3	292.8	1005.4	284.82
7:15	1045.3	288.5	1006.3	284.13
7:30	1045.3	283.6	1005.3	287.89
7:45	1045.3	278.4	1006.3	284.59
8:00	1045.3	276.1	1004.5	286.75
8:15	1045.3	277	1006.2	294.59
8:30	1045.3	275.2	1006.5	293.81
8:45	1045.3	272.8	1003.5	285.83
9:00	1045.3	274.2	1006.2	281.88

Coincidental peak load of Day(Last year):	
248.27 MW	22-Oct-17

Maximum Load till date:	
344.02 MW	18-Mar-17

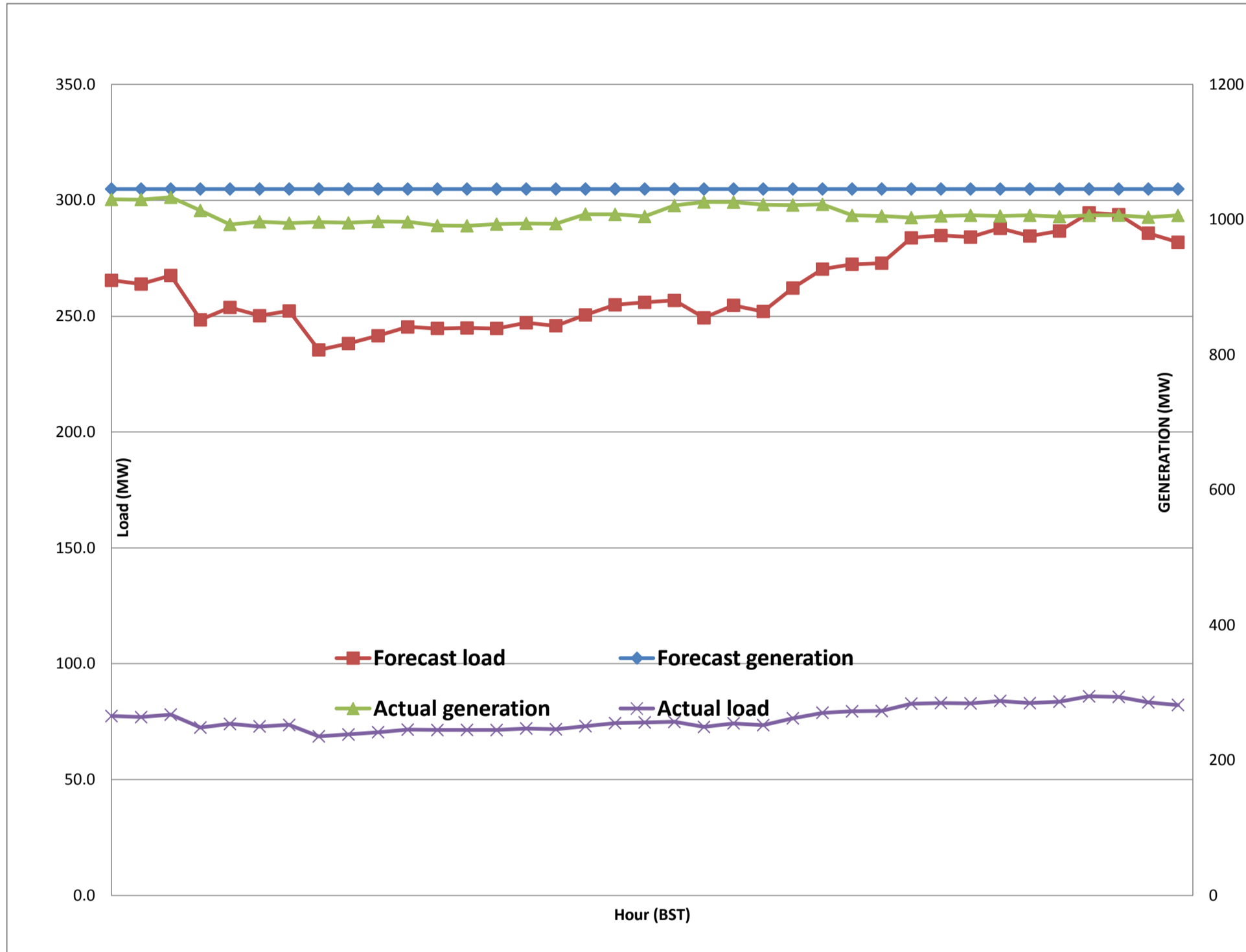
Yours faithfully,
0



Message No.: Enter your message number
 From: Shift In-charge, Control Room

Date: 22-Oct-17
 Time: 10:19

Forecast Generation & Load with Actual Generation & Load of Today from 00:00hrs to 09:00hrs(22-Oct-2017).





འབྲུག་གྲོག་ལས་ཁུངས་ལྷན་ཁག།
Bhutan Power Corporation Ltd.
Bhutan Power System Operator
 Thimphu: Bhutan



Message No.: Enter your message number **Date:** 22-Oct-17
From: Shift In-charge, Control Room **Time:** 10:19

To
 Managing Director, BPC. Email: gemtshering@bpc.bt
 Director, O&MD, DGPC. Email: director.umd@drukgreen.com
 General Manager, TD, BPC. Email: ktobgye@bpc.bt
 General Manager, BPSO, BPC. Email: ujjwaldahal@bpc.bt
 Advisor, BPC. Email: bharattamang@bpc.bt

Sub: Load Generation Balance Report of Tomorrow (23-Oct-2017).

Hours (BST)	Forecast		Hours (BST)	Forecast	
	Generation	Load		Generation	Load
0:00	1041	257.30	12:00	1041	278.3
0:15	1041	256.30	12:15	1041	280.1
0:30	1041	255.20	12:30	1041	278.4
0:45	1041	255.80	12:45	1041	276.6
1:00	1041	256.70	13:00	1041	271.6
1:15	1041	255.30	13:15	1041	269.5
1:30	1041	255.80	13:30	1041	267.3
1:45	1041	255.00	13:45	1041	262.4
2:00	1041	255.90	14:00	1041	261.5
2:15	1041	258.50	14:15	1041	262.8
2:30	1041	252.60	14:30	1041	265
2:45	1041	253.80	14:45	1041	264.6
3:00	1041	254.20	15:00	1041	262.7
3:15	1041	253.70	15:15	1041	266.1
3:30	1041	253.10	15:30	1041	266.8
3:45	1041	253.90	15:45	1041	263.8
4:00	1041	252.90	16:00	1041	265
4:15	1041	254.40	16:15	1041	269.9
4:30	1041	253.20	16:30	1041	267.7
4:45	1041	256.70	16:45	1041	268.7
5:00	1041	258.20	17:00	1041	278.1
5:15	1041	261.30	17:15	1041	286.2
5:30	1041	265.60	17:30	1041	295.2
6:45	1041	271.40	17:45	1041	306.3
6:00	1041	276.80	18:00	1041	315.3
6:15	1041	287.60	18:15	1041	320
6:30	1041	289.80	18:30	1041	319.8
6:45	1041	293.50	18:45	1041	316
7:00	1041	293.70	19:00	1041	313.1
7:15	1041	289.50	19:15	1041	306.2
7:30	1041	283.90	19:30	1041	306.6
7:45	1041	278.10	19:45	1041	298.2
8:00	1041	276.20	20:00	1041	294.6
8:15	1041	277.00	20:15	1041	299.2
8:30	1041	275.00	20:30	1041	297.4
8:45	1041	272.20	20:45	1041	294.2
9:00	1041	274.30	21:00	1041	291.3
9:15	1041	271.50	21:15	1041	290
9:30	1041	271.90	21:30	1041	286.5
9:45	1041	271.00	21:45	1041	280.5
10:00	1041	268.50	22:00	1041	275.4
10:15	1041	265.70	22:15	1041	266.3
10:30	1041	269.70	22:30	1041	262.4
10:45	1041	270.20	22:45	1041	259.6
11:00	1041	273.50	23:00	1041	256.4
11:15	1041	274.60	23:15	1018.4	254.9
11:30	1041	277.40	23:30	1018.4	255
11:45	1041	278.30	23:45	1018.4	253.9

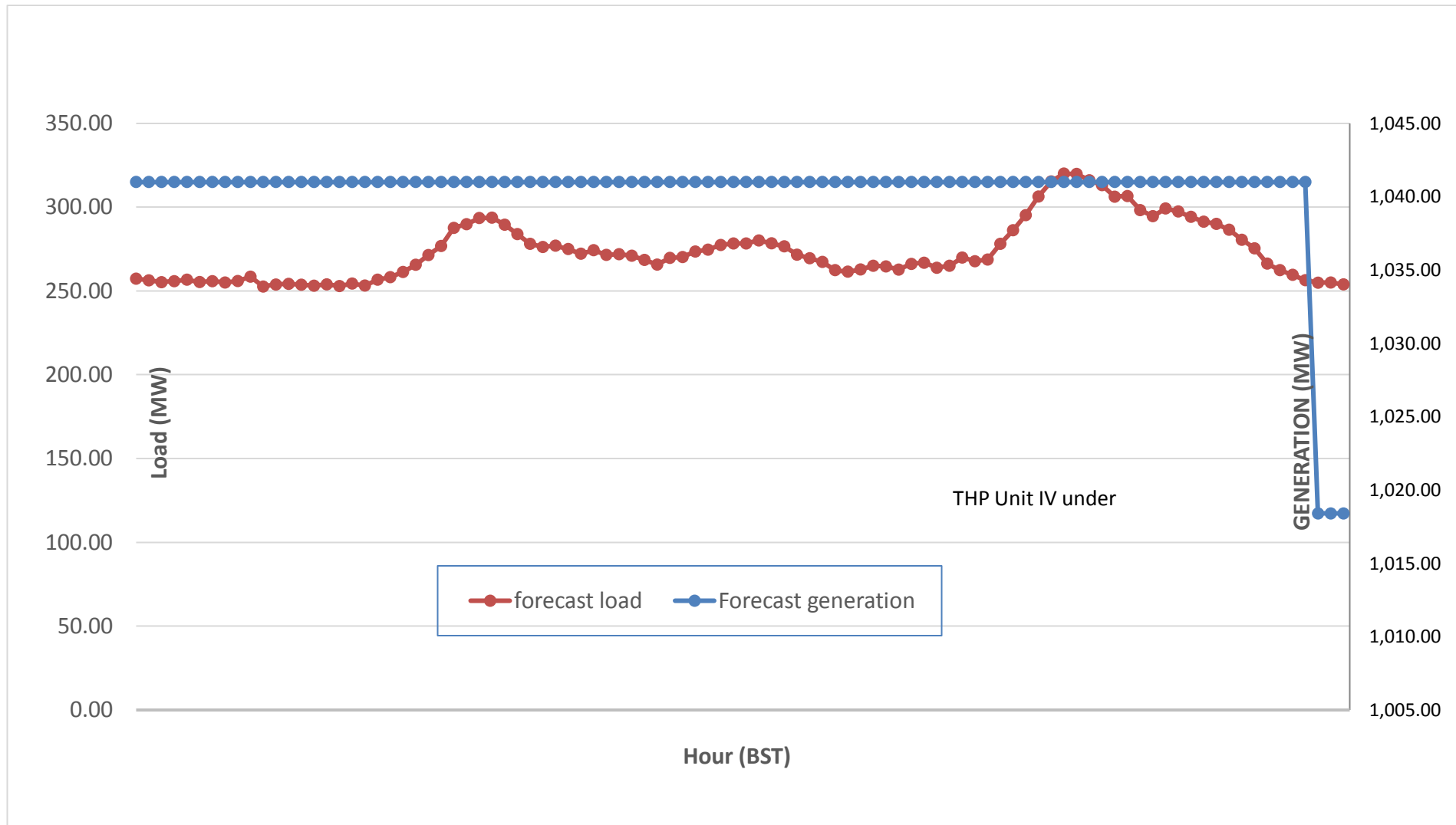
Yours faithfully,
 0



Message No.: Enter your message number
 From: Shift In-charge, Control Room

Date: 22-Oct-17
 Time: 10:19

Scheduled Generation & Load Forecast for Tomorrow (23-Oct-2017).



Yours faithfully,
 0

	MW
Scheduled Peak Generation(23-Oct-2017).	376.90
Forecast Peak Load(23-Oct-2017).	300.60