



ཕྱག་ལུགས་ལེ་ལས་འཛིན།

Bhutan Power Corporation Ltd.  
Bhutan Power System Operator  
Thimphu: Bhutan



Message No.: Enter your message number  
From: Shift In-charge, Control Room

Date: 21-Oct-17  
Time: 10:23

To  
Managing Director, BPC. Email: gemtshering@bpc.bt  
Director, O&MD, DGPC. Email: director.omb@drukgreen.com  
General Manager, TD, BPC. Email: ktobgye@bpc.bt  
General Manager, DCSD, BPC. Email: sandeeprai@bpc.bt  
General Manager, BPSO, BPC. Email: ujjwaldahal@bpc.bt

Sub: Load Generation Balance Report of Yesterday (20-Oct-2017).

Hours (BST)	Forecast		Actual		Hours (BST)	Forecast		Actual	
	Generation	Load	Generation	Load		Generation	Load	Generation	Load
0:00	1019.2	252.5	948.5	270.7	12:00	1019.2	252.5	930.8	265.80
0:15	1019.2	254.4	961.7	258.2	12:15	1019.2	254.4	903.2	269.55
0:30	1019.2	254.7	963.8	262.0	12:30	1019.2	254.7	902.4	266.78
0:45	1019.2	252.4	962.6	264.8	12:45	1019.2	252.4	906.5	272.95
1:00	1019.2	250.8	962.0	267.5	13:00	1019.2	250.8	905.5	269.46
1:15	1019.2	251.5	960.3	261.1	13:15	1019.2	251.5	905.7	269.83
1:30	1019.2	252.2	961.3	259.6	13:30	1019.2	252.2	902.1	260.59
1:45	1019.2	254.1	1057.3	256.7	13:45	1019.2	254.1	908.0	256.41
2:00	1019.2	251.9	1074.3	260.2	14:00	1019.2	251.9	922.3	254.61
2:15	1019.2	255.7	1076.8	263.5	14:15	1019.2	255.7	923.0	249.18
2:30	1019.2	252.4	1075.5	250.5	14:30	1019.2	252.4	923.0	253.74
2:45	1019.2	253.8	1076.9	255.3	14:45	1019.2	253.8	919.4	256.37
3:00	1019.2	254.3	1076.8	258.9	15:00	1019.2	254.3	918.3	250.17
3:15	1019.2	252.5	1016.3	261.1	15:15	1019.2	252.5	921.6	251.56
3:30	1019.2	252.9	1004.2	258.8	15:30	1019.2	252.9	890.2	259.05
3:45	1019.2	255.6	1002.4	256.2	15:45	1019.2	255.6	892.3	263.59
4:00	1019.2	254	1004.5	260.1	16:00	1019.2	254	893.0	259.73
4:15	1019.2	255	969.6	259.5	16:15	1019.2	255	891.2	270.90
4:30	1019.2	253.7	966.2	257.3	16:30	1019.2	253.7	892.4	251.45
4:45	1019.2	256.2	965.7	258.6	16:45	1019.2	256.2	889.1	250.60
5:00	1019.2	257.2	967.3	265.4	17:00	1019.2	257.2	890.7	270.55
5:15	1019.2	261.1	950.8	267.7	17:15	1019.2	261.1	888.5	285.15
5:30	1019.2	266.8	951.2	270.8	17:30	1019.2	266.8	890.9	299.07
6:45	1019.2	271	951.2	277.6	17:45	1019.2	271	1053.9	309.47
6:00	1019.2	277	947.2	282.8	18:00	1019.2	277	1057.6	320.60
6:15	1019.2	291.7	956.9	284.2	18:15	1019.2	291.7	1035.8	317.78
6:30	1019.2	295.4	947.9	297.2	18:30	1019.2	295.4	888.2	313.70
6:45	1019.2	298.8	955.1	292.2	18:45	1019.2	298.8	890.0	311.58
7:00	1019.2	296.6	951.2	294.7	19:00	1019.2	296.6	751.6	309.41
7:15	1019.2	294.3	953.2	290.5	19:15	1019.2	294.3	751.6	301.39
7:30	1019.2	286.9	951.5	274.2	19:30	1019.2	286.9	784.6	303.92
7:45	1019.2	281	948.6	271.5	19:45	1019.2	281	871.6	301.70
8:00	1019.2	277.2	952.7	269.7	20:00	1019.2	277.2	853.3	295.26
8:15	1019.2	277.7	951.3	274.7	20:15	1019.2	277.7	852.8	301.62
8:30	1019.2	275.5	953.8	273.3	20:30	1019.2	275.5	852.1	294.38
8:45	1019.2	273.2	954.5	269.2	20:45	1019.2	273.2	851.5	294.51
9:00	1019.2	274.6	951.6	268.6	21:00	1019.2	274.6	851.4	292.45
9:15	1019.2	270.2	953.9	267.7	21:15	1019.2	270.2	852.2	291.65
9:30	1019.2	272.4	952.0	264.9	21:30	1019.2	272.4	856.4	283.78
9:45	1019.2	270.4	951.1	264.4	21:45	1019.2	270.4	856.4	278.50
10:00	1019.2	272.6	953.3	252.4	22:00	1019.2	272.6	858.7	271.48
10:15	1019.2	268.8	954.7	257.9	22:15	1019.2	268.8	918.9	258.29
10:30	1019.2	272.9	944.4	253.7	22:30	1019.2	272.9	914.8	245.64
10:45	1019.2	273.5	934.5	256.4	22:45	1019.2	273.5	914.5	240.48
11:00	1019.2	274.4	933.8	265.4	23:00	1019.2	274.4	938.4	241.22
11:15	1019.2	275.6	933.5	263.8	23:15	1019.2	275.6	942.6	239.09
11:30	1019.2	276.6	932.7	270.3	23:30	1019.2	276.6	953.7	239.61
11:45	1019.2	279.7	930.6	257.4	23:45	1019.2	279.7	960.1	238.92

Yours faithfully,  
Pema Lhamo

Coincidental peak load of Day(Last year):	
267.64 MW	20-Oct-16
Maximum Load till date:	
344.02 MW	18-Mar-17



འབྲུག་གློག་ལེ་ལས་འཛིན།

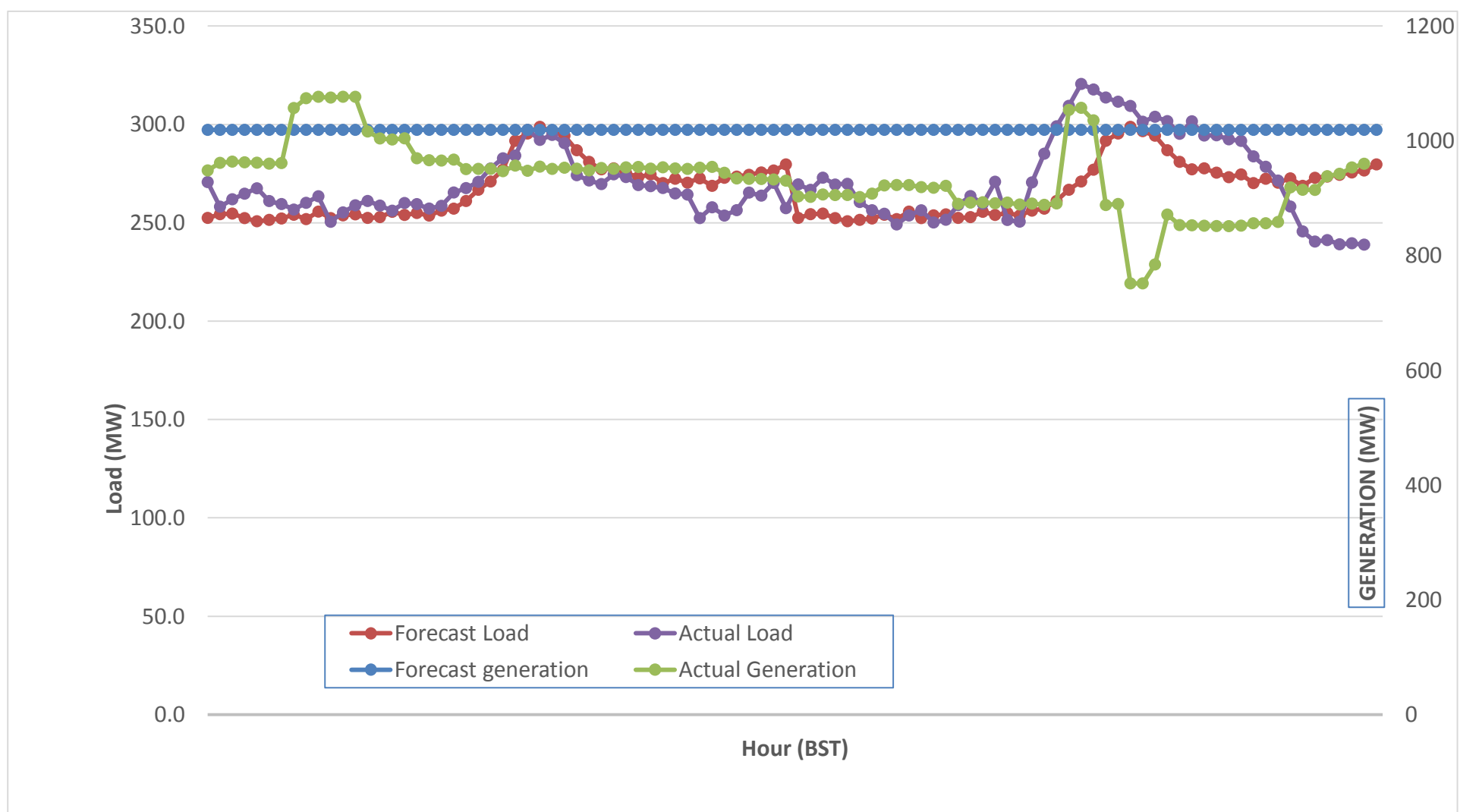
Bhutan Power Corporation Ltd.  
 Bhutan Power System Operator  
 Thimphu: Bhutan



Message No.: Enter your message number  
 From: Shift In-charge, Control Room

Date: 21-Oct-17  
 Time: 10:23

Forecast Generation & Load with Actual Generation & Load (20-Oct-2017).



Yours faithfully,  
 Pema Lhamo

	MW	Coincidental peak load of Day(Last year):	
Peak Co-incident Generation(20-Oct-2017).	1076.88	267.64 MW	20-Oct-16
Peak Co-incident Load(20-Oct-2017).	320.60	Maximum Load till date:	
		344.02 MW	18-Mar-17

Telephone: +975-02335631; Fax: +975-02335632; Email: bhutansystemoperator@bpc.bt; www.bpc.bt



འབྲུག་གློག་མེ་ལས་འཛིན།

Bhutan Power Corporation Ltd.  
Bhutan Power System Operator  
Thimphu: Bhutan



**Message No.:** Enter your message number  
**From:** Shift In-charge, Control Room

**Date:** 21-Oct-17  
**Time:** 10:23

**To**  
Managing Director, BPC. Email: gemtshering@bpc.bt  
Director, O&MD, DGPC. Email: director.omid@drukgreen.com  
General Manager, TD, BPC. Email: thinleygyeltshen@bpc.bt  
General Manager, DCSD, BPC. Email: sandeprai@bpc.bt  
General Manager, BPSO, BPC. Email: ujjwaldahal@bpc.bt

**Sub:** Load Generation Balance Report of Today (21-Oct-2017).

Hours (BST)	Forecast		Actual	
	Generation	Load	Generation	Load
0:00	971.4	253.8	959.1	240.86
0:15	971.4	255.4	958.4	243.50
0:30	971.4	254.8	1005.3	239.36
0:45	971.4	252.7	1005.3	236.44
1:00	971.4	253.5	1005.3	238.04
1:15	971.4	253.4	996.3	230.43
1:30	971.4	255.1	998.7	235.84
1:45	971.4	255.2	1026.9	236.78
2:00	971.4	254.3	1026.6	245.74
2:15	971.4	256.7	1028.0	250.66
2:30	971.4	252.9	1026.3	250.17
2:45	971.4	253.9	1026.0	253.29
3:00	971.4	252.7	1025.4	258.05
3:15	971.4	251.8	1027.9	257.22
3:30	971.4	252.4	1028.5	250.12
3:45	971.4	252.7	1029.4	238.76
4:00	971.4	252.9	1028.3	242.06
4:15	971.4	254	1015.9	251.93
4:30	971.4	254.4	1006.6	253.86
4:45	971.4	255.7	1010.7	253.28
5:00	971.4	256.7	1010.9	256.62
5:15	971.4	259.5	1011.2	258.02
5:30	971.4	264.6	1012.0	261.91
5:45	971.4	268.6	1010.2	268.24
6:00	971.4	274.6	1013.4	271.70
6:15	971.4	288.4	964.4	276.86
6:30	971.4	290.2	966.5	278.89
6:45	971.4	294.1	964.5	296.60
7:00	971.4	292.7	967.6	298.20
7:15	971.4	290.7	989.5	304.53
7:30	971.4	286.2	1048.4	302.80
7:45	971.4	281.3	1059.3	296.08
8:00	971.4	278.3	1054.8	298.34
8:15	971.4	278	1072.9	284.91
8:30	971.4	276	1077.2	272.43
8:45	971.4	274.3	1074.1	285.69
9:00	971.4	275.8	1076.6	281.03

Coincidental peak load of Day(Last year):	
248.27 MW	21-Oct-17

Maximum Load till date:	
344.02 MW	18-Mar-17

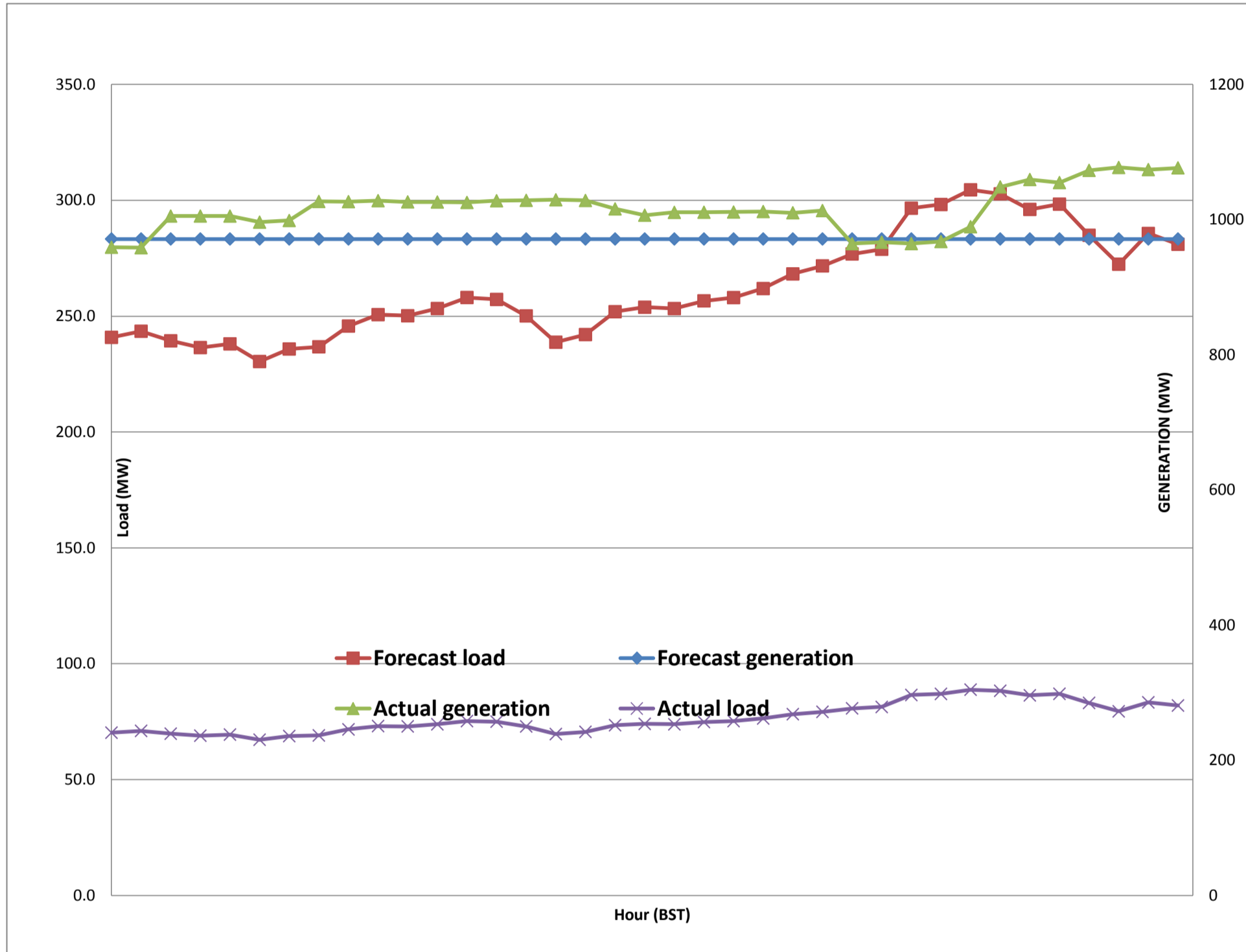
Yours faithfully,  
Pema Lhamo



Message No.: Enter your message number  
 From: Shift In-charge, Control Room

Date: 21-Oct-17  
 Time: 10:23

Forecast Generation & Load with Actual Generation & Load of Today from 00:00hrs to 09:00hrs(21-Oct-2017).





འབྲུག་གྲོག་ལས་ཁུངས་ལྷན་ཁག།  
**Bhutan Power Corporation Ltd.**  
**Bhutan Power System Operator**  
 Thimphu: Bhutan



**Message No.:** Enter your message number **Date:** 21-Oct-17  
**From:** Shift In-charge, Control Room **Time:** 10:23

**To**  
 Managing Director, BPC. Email: gemtshering@bpc.bt  
 Director, O&MD, DGPC. Email: director.umd@drukgreen.com  
 General Manager, TD, BPC. Email: ktobgye@bpc.bt  
 General Manager, BPSO, BPC. Email: ujjwaldahal@bpc.bt  
 Advisor, BPC. Email: bharattamang@bpc.bt

**Sub:** Load Generation Balance Report of Tomorrow (22-Oct-2017).

Hours (BST)	Forecast		Hours (BST)	Forecast	
	Generation	Load		Generation	Load
0:00	1045.3	258.20	12:00	1045.3	278.8
0:15	1045.3	257.10	12:15	1045.3	280.5
0:30	1045.3	256.20	12:30	1045.3	278.5
0:45	1045.3	256.90	12:45	1045.3	276.8
1:00	1045.3	256.80	13:00	1045.3	272.2
1:15	1045.3	255.90	13:15	1045.3	270.3
1:30	1045.3	256.40	13:30	1045.3	268
1:45	1045.3	255.60	13:45	1045.3	263.6
2:00	1045.3	255.90	14:00	1045.3	262.8
2:15	1045.3	258.50	14:15	1045.3	263.9
2:30	1045.3	252.80	14:30	1045.3	266.1
2:45	1045.3	253.90	14:45	1045.3	265.9
3:00	1045.3	254.60	15:00	1045.3	263.4
3:15	1045.3	254.20	15:15	1045.3	266.7
3:30	1045.3	253.70	15:30	1045.3	267.2
3:45	1045.3	254.00	15:45	1045.3	264.7
4:00	1045.3	253.50	16:00	1045.3	264.5
4:15	1045.3	254.70	16:15	1045.3	270.2
4:30	1045.3	254.50	16:30	1045.3	267.4
4:45	1045.3	257.00	16:45	1045.3	267.8
5:00	1045.3	258.50	17:00	1045.3	277.2
5:15	1045.3	261.50	17:15	1045.3	285
5:30	1045.3	265.20	17:30	1045.3	294.1
6:45	1045.3	270.90	17:45	1045.3	305
6:00	1045.3	276.40	18:00	1045.3	314.1
6:15	1045.3	286.60	18:15	1045.3	319.8
6:30	1045.3	288.90	18:30	1045.3	319.8
6:45	1045.3	292.40	18:45	1045.3	316.1
7:00	1045.3	292.80	19:00	1045.3	312.9
7:15	1045.3	288.50	19:15	1045.3	306.4
7:30	1045.3	283.60	19:30	1045.3	306.8
7:45	1045.3	278.40	19:45	1045.3	298.7
8:00	1045.3	276.10	20:00	1045.3	294.8
8:15	1045.3	277.00	20:15	1045.3	298.3
8:30	1045.3	275.20	20:30	1045.3	297.3
8:45	1045.3	272.80	20:45	1045.3	294.2
9:00	1045.3	274.20	21:00	1045.3	291
9:15	1045.3	271.10	21:15	1045.3	289.7
9:30	1045.3	271.70	21:30	1057.5	286.6
9:45	1045.3	270.40	21:45	1057.5	281.3
10:00	1045.3	268.70	22:00	1057.5	275.7
10:15	1045.3	265.60	22:15	1057.5	267.1
10:30	1045.3	269.90	22:30	1072.7	262.7
10:45	1045.3	270.70	22:45	1072.7	260
11:00	1045.3	274.60	23:00	1072.7	256.3
11:15	1045.3	276.10	23:15	1072.7	254.7
11:30	1045.3	278.50	23:30	1072.7	255.5
11:45	1045.3	278.90	23:45	1072.7	254.1

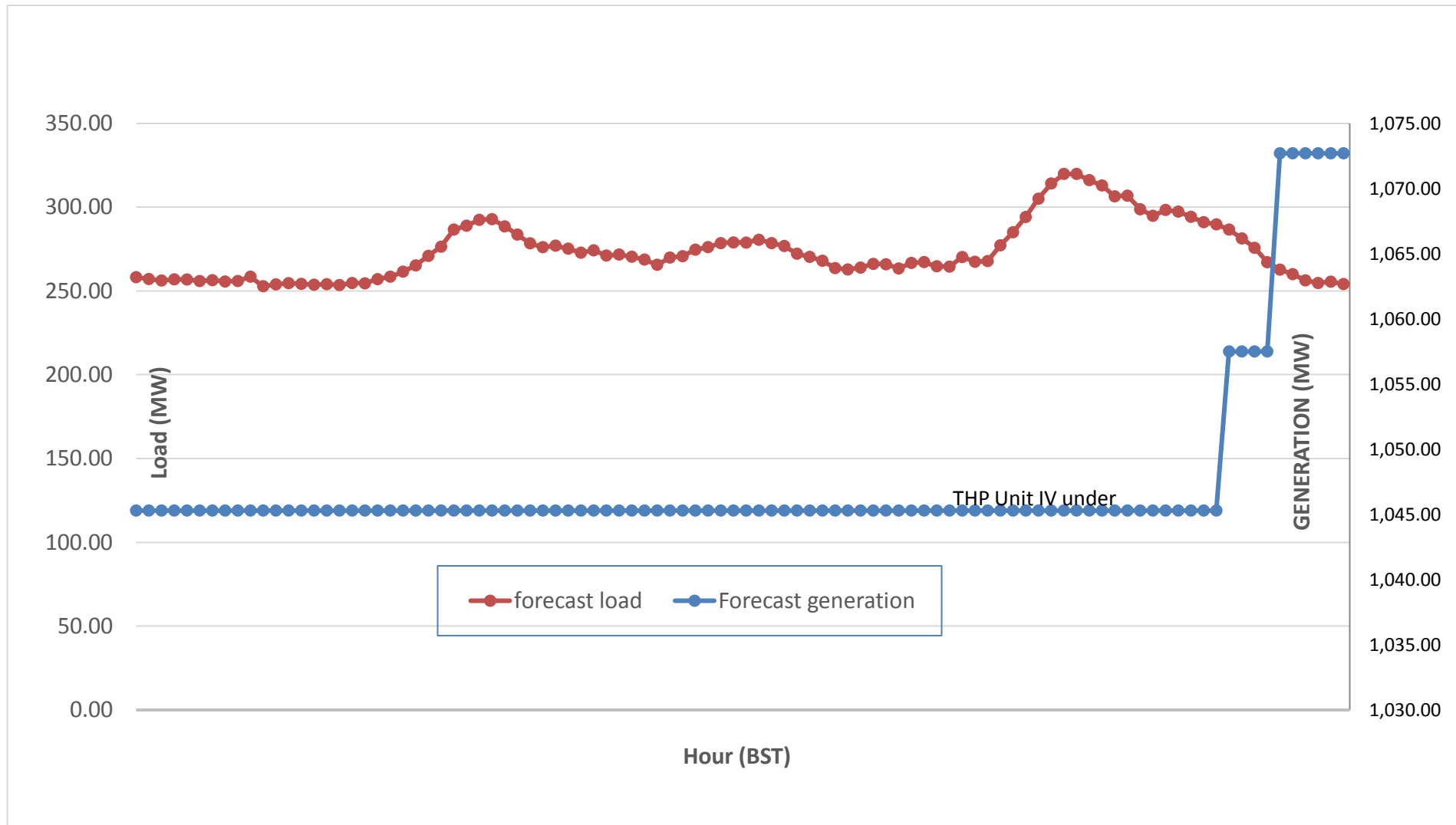
Yours faithfully,  
 Pema Lhamo



Message No.: Enter your message number  
 From: Shift In-charge, Control Room

Date: 21-Oct-17  
 Time: 10:23

**Scheduled Generation & Load Forecast for Tomorrow (22-Oct-2017).**



Yours faithfully,  
 Pema Lhamo

	MW
Scheduled Peak Generation(22-Oct-2017).	376.90
Forecast Peak Load(22-Oct-2017).	300.60