



འབྲུག་གླིང་མེ་ལམ་འཛིན།

Bhutan Power Corporation Ltd.
Bhutan Power System Operator
Thimphu: Bhutan



Message No.: Enter your message number
From: Shift In-charge, Control Room

Date: 20-Oct-17
Time: 11:10

To
Managing Director, BPC. Email: gemtshering@bpc.bt
Director, O&MD, DGPC. Email: director.umd@drukgreen.com
General Manager, TD, BPC. Email: ktobgye@bpc.bt
General Manager, DCSD, BPC. Email: sandeeprai@bpc.bt
General Manager, BPSO, BPC. Email: ujjwaldahal@bpc.bt

Sub: Load Generation Balance Report of Yesterday (19-Oct-2017).

Hours (BST)	Forecast		Actual		Hours (BST)	Forecast		Actual	
	Generation	Load	Generation	Load		Generation	Load	Generation	Load
0:00	1126.1	249.6	1013.8	258.2	12:00	1126.1	274.3	1020.5	289.77
0:15	1126.1	250.7	1014.2	260.3	12:15	1126.1	275.5	1021.5	291.78
0:30	1126.1	250.4	1029.6	265.3	12:30	1126.1	273.3	1023.0	289.18
0:45	1126.1	249.6	1026.9	261.8	12:45	1126.1	269.7	1024.0	290.16
1:00	1126.1	242.8	1030.2	257.8	13:00	1126.1	270.7	1024.5	279.78
1:15	1126.1	244.9	1028.6	268.9	13:15	1126.1	268.5	1021.9	274.27
1:30	1126.1	245.5	1030.9	267.2	13:30	1126.1	267.2	1021.8	272.85
1:45	1126.1	248.4	1030.3	266.2	13:45	1126.1	265.3	1023.5	273.80
2:00	1126.1	245.4	1030.4	266.3	14:00	1126.1	263.9	1021.3	282.32
2:15	1126.1	247.7	1031.2	270.5	14:15	1126.1	267.4	1022.3	284.68
2:30	1126.1	244.5	884.7	267.9	14:30	1126.1	268.9	1020.4	283.90
2:45	1126.1	246.6	883.3	262.6	14:45	1126.1	262.3	1023.1	285.68
3:00	1126.1	246.9	878.6	263.9	15:00	1126.1	265.5	1019.8	286.52
3:15	1126.1	245.4	918.8	258.1	15:15	1126.1	262.9	1024.4	282.57
3:30	1126.1	247.2	1079.6	258.8	15:30	1126.1	264.9	1025.2	284.59
3:45	1126.1	248.5	1079.5	266.4	15:45	1126.1	261.9	1024.6	275.74
4:00	1126.1	247.3	1079.6	261.8	16:00	1126.1	261.4	1024.6	275.29
4:15	1126.1	246.4	1080.1	263.7	16:15	1126.1	269.2	1017.2	277.09
4:30	1126.1	245.2	1080.9	264.8	16:30	1126.1	270.9	1016.3	272.18
4:45	1126.1	247.2	1079.9	266.1	16:45	1126.1	269	1016.3	277.90
5:00	1126.1	248.4	1078.5	271.9	17:00	1126.1	272.8	1010.7	284.54
5:15	1126.1	253.2	1078.3	274.8	17:15	1126.1	280.5	1012.6	285.98
5:30	1126.1	257.5	1078.0	274.5	17:30	1126.1	289.3	1009.1	298.71
6:45	1126.1	261.7	1079.4	276.5	17:45	1126.1	295.6	1012.2	303.04
6:00	1126.1	265.4	1078.3	287.1	18:00	1126.1	306.7	1008.5	311.30
6:15	1126.1	278	1078.3	304.8	18:15	1126.1	317	1010.2	315.49
6:30	1126.1	280.2	1079.3	317.5	18:30	1126.1	317.9	1009.3	318.63
6:45	1126.1	282.1	1077.3	319.7	18:45	1126.1	312.6	1010.5	315.39
7:00	1126.1	282.7	1078.0	321.1	19:00	1126.1	312.9	1013.8	319.38
7:15	1126.1	279.9	1077.5	316.4	19:15	1126.1	307.4	1011.3	303.34
7:30	1126.1	271.9	1080.3	306.4	19:30	1126.1	303.5	1007.3	309.40
7:45	1126.1	269.3	1078.4	297.6	19:45	1126.1	298	1012.2	310.61
8:00	1126.1	267.5	1078.8	293.7	20:00	1126.1	293.3	1056.5	303.58
8:15	1126.1	268.8	1082.3	298.3	20:15	1126.1	294	1195.1	301.02
8:30	1126.1	265.2	1061.5	291.1	20:30	1126.1	292.3	1010.5	301.98
8:45	1126.1	266.3	1060.7	279.0	20:45	1126.1	288.2	1010.0	297.07
9:00	1126.1	265.8	1062.9	280.2	21:00	1126.1	284.7	1009.7	300.57
9:15	1126.1	263.1	1021.3	277.2	21:15	1126.1	284.5	1006.5	292.45
9:30	1126.1	263.9	1021.8	292.2	21:30	1126.1	279.7	1010.1	292.38
9:45	1126.1	259.5	1021.9	292.3	21:45	1126.1	276.3	982.2	295.90
10:00	1126.1	265.3	1020.9	287.7	22:00	1126.1	272.8	979.3	279.37
10:15	1126.1	262.2	1023.2	288.9	22:15	1126.1	267.2	977.9	271.10
10:30	1126.1	265.9	1021.6	292.9	22:30	1126.1	264.5	979.1	272.05
10:45	1126.1	266.7	1021.1	288.7	22:45	1126.1	263.9	978.8	268.37
11:00	1126.1	270	1108.3	287.0	23:00	1126.1	258.3	981.6	260.27
11:15	1126.1	269.9	1023.5	284.4	23:15	1126.1	255.6	983.9	257.39
11:30	1126.1	268.8	1023.5	292.5	23:30	1126.1	253.7	983.6	261.34
11:45	1126.1	271.9	1021.1	293.4	23:45	1126.1	253	977.8	252.91

Yours faithfully,
Pema Lhamo

Coincidental peak load of Day(Last year):	
267.64	19-Oct-16
Maximum Load till date:	
344.02 MW	18-Mar-17



འབྲུག་རྒྱལ་ཁོ་ལས་འཛིན།

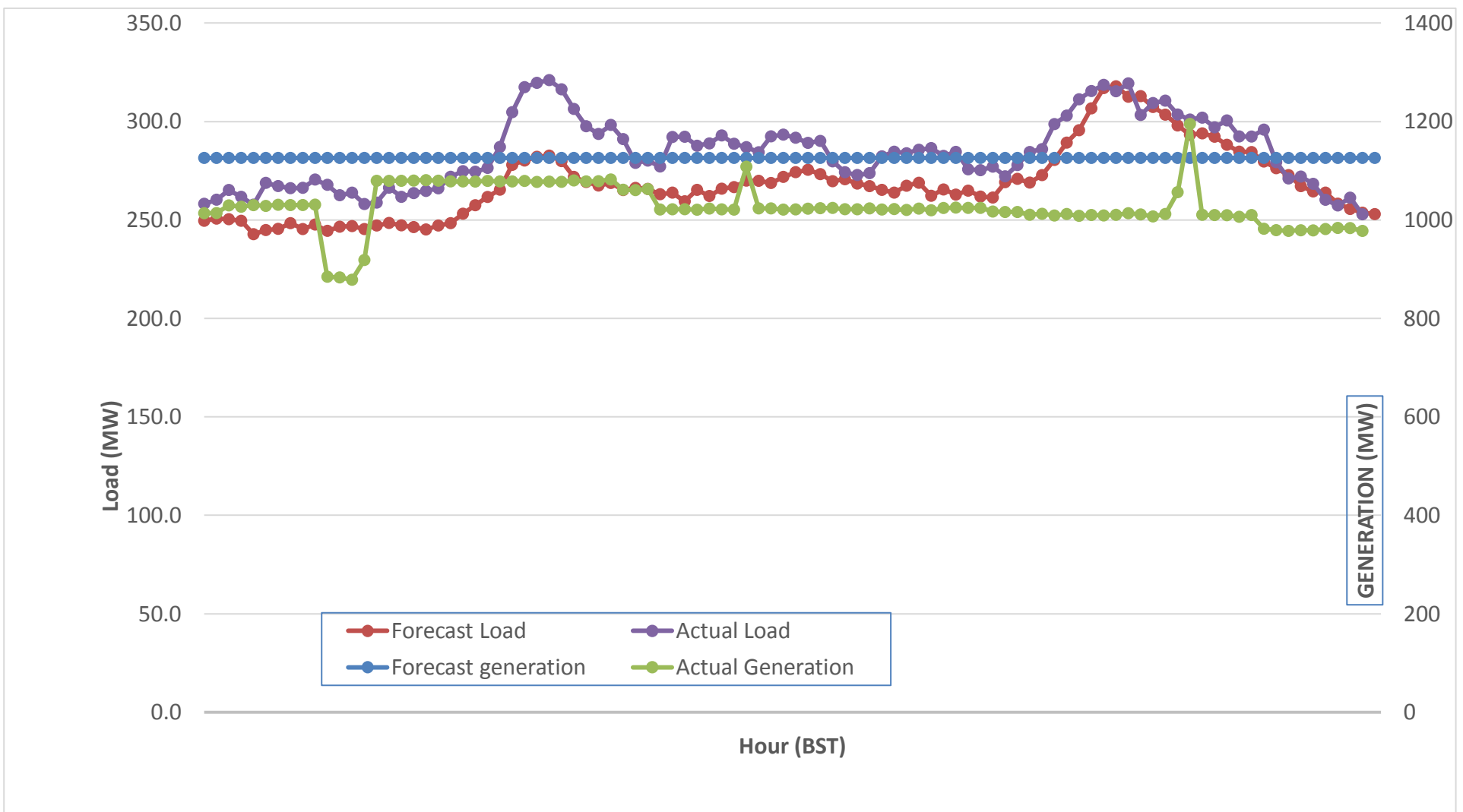
Bhutan Power Corporation Ltd.
 Bhutan Power System Operator
 Thimphu: Bhutan



Message No.: Enter your message number
 From: Shift In-charge, Control Room

Date: 20-Oct-17
 Time: 11:10

Forecast Generation & Load with Actual Generation & Load (19-Oct-2017).



Yours faithfully,
 Pema Lhamo

	MW
Peak Co-incident Generation(19-Oct-2017).	1195.13
Peak Co-incident Load(19-Oct-2017).	321.05

Coincidental peak load of Day(Last year):	
267.64	19-Oct-16
Maximum Load till date:	
344.02 MW	18-Mar-17

Telephone: +975-02335631; Fax: +975-02335632; Email: bhutansystemoperator@bpc.bt; www.bpc.bt



འབྲུག་གྲོག་མེ་ལས་འཛིན།

Bhutan Power Corporation Ltd.
Bhutan Power System Operator
Thimphu: Bhutan



Message No.: Enter your message number
From: Shift In-charge, Control Room

Date: 20-Oct-17
Time: 11:10

To

Managing Director, BPC. Email: gemtshering@bpc.bt
Director, O&MD, DGPC. Email: director.omid@drukgreen.com
General Manager, TD, BPC. Email: thinleygyeltshen@bpc.bt
General Manager, DCSD, BPC. Email: sandeprai@bpc.bt
General Manager, BPSO, BPC. Email: ujjwaldahal@bpc.bt

Sub:

Load Generation Balance Report of Today (20-Oct-2017).

Hours (BST)	Forecast		Actual	
	Generation	Load	Generation	Load
0:00	1019.2	252.5	948.5	270.72
0:15	1019.2	254.4	961.7	258.23
0:30	1019.2	254.7	963.8	261.98
0:45	1019.2	252.4	962.6	264.80
1:00	1019.2	250.8	962.0	267.55
1:15	1019.2	251.5	960.3	261.07
1:30	1019.2	252.2	961.3	259.55
1:45	1019.2	254.1	1057.3	256.73
2:00	1019.2	251.9	1074.3	260.17
2:15	1019.2	255.7	1076.8	263.50
2:30	1019.2	252.4	1075.5	250.53
2:45	1019.2	253.8	1076.9	255.30
3:00	1019.2	254.3	1076.8	258.91
3:15	1019.2	252.5	1016.3	261.10
3:30	1019.2	252.9	1004.2	258.77
3:45	1019.2	255.6	1002.4	256.16
4:00	1019.2	254	1004.5	260.08
4:15	1019.2	255	969.6	259.51
4:30	1019.2	253.7	966.2	257.26
4:45	1019.2	256.2	965.7	258.63
5:00	1019.2	257.2	967.3	265.42
5:15	1019.2	261.1	950.8	267.66
5:30	1019.2	266.8	951.2	270.83
5:45	1019.2	271	951.2	277.62
6:00	1019.2	277	947.2	282.80
6:15	1019.2	291.7	956.9	284.18
6:30	1019.2	295.4	947.9	297.20
6:45	1019.2	298.8	955.1	292.16
7:00	1019.2	296.6	951.2	294.69
7:15	1019.2	294.3	953.2	290.52
7:30	1019.2	286.9	951.5	274.22
7:45	1019.2	281	948.6	271.53
8:00	1019.2	277.2	952.7	269.70
8:15	1019.2	277.7	951.3	274.66
8:30	1019.2	275.5	953.8	273.28
8:45	1019.2	273.2	954.5	269.20
9:00	1019.2	274.6	951.6	268.64

Coincidental peak load of Day(Last year):	
255.75	20-Oct-17
Maximum Load till date:	
344.02 MW	18-Mar-17

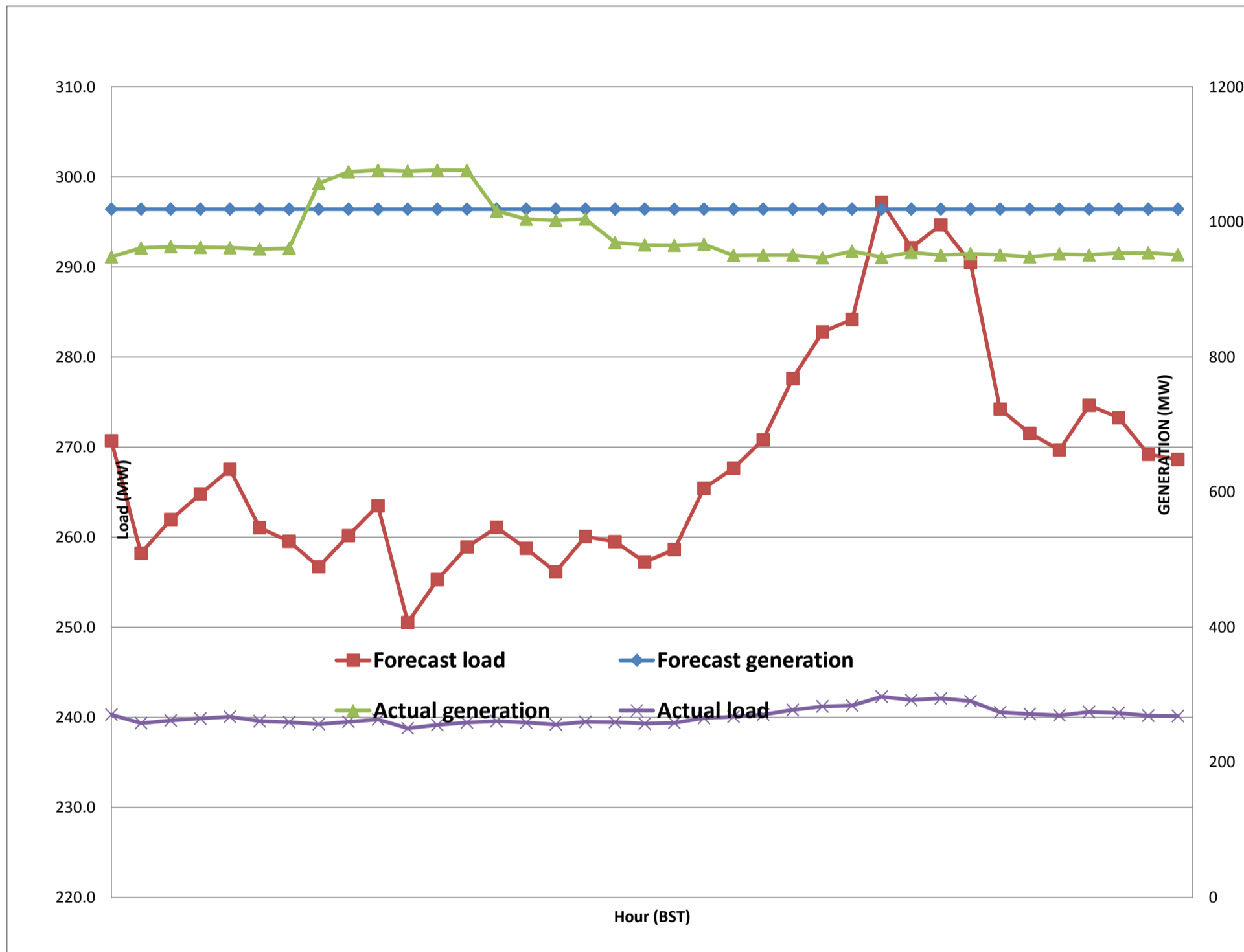
Yours faithfully,
Pema Lhamo



Message No.: Enter your message number
 From: Shift In-charge, Control Room

Date: 20-Oct-17
 Time: 11:10

Forecast Generation & Load with Actual Generation & Load of Today from 00:00hrs to 09:00hrs(20-Oct-2017).





འབྲུག་གྲོག་ལས་ལེ་སྐོར་ལྷན་ཁག་།
Bhutan Power Corporation Ltd.
Bhutan Power System Operator
 Thimphu: Bhutan



Message No.: Enter your message number **Date:** 20-Oct-17
From: Shift In-charge, Control Room **Time:** 11:10

To
 Managing Director, BPC. Email: gemtshering@bpc.bt
 Director, O&MD, DGPC. Email: director.umd@drukgreen.com
 General Manager, TD, BPC. Email: ktobgye@bpc.bt
 General Manager, BPSO, BPC. Email: ujjwaldahal@bpc.bt
 Advisor, BPC. Email: bharattamang@bpc.bt

Sub: Load Generation Balance Report of Tomorrow (21-Oct-2017).

Hours (BST)	Forecast		Hours (BST)	Forecast	
	Generation	Load		Generation	Load
0:00	971.4	253.80	12:00	971.4	281.3
0:15	971.4	255.40	12:15	971.4	283
0:30	971.4	254.80	12:30	971.4	280.6
0:45	971.4	252.70	12:45	971.4	277.5
1:00	971.4	253.50	13:00	971.4	272.7
1:15	971.4	253.40	13:15	971.4	269.7
1:30	971.4	255.10	13:30	971.4	268
1:45	971.4	255.20	13:45	971.4	266.3
2:00	971.4	254.30	14:00	971.4	264
2:15	971.4	256.70	14:15	971.4	267.7
2:30	971.4	252.90	14:30	971.4	269.8
2:45	971.4	253.90	14:45	971.4	269.4
3:00	971.4	252.70	15:00	971.4	268.1
3:15	971.4	251.80	15:15	971.4	270.7
3:30	971.4	252.40	15:30	971.4	268.9
3:45	971.4	252.70	15:45	971.4	266.3
4:00	971.4	252.90	16:00	971.4	267.6
4:15	971.4	254.00	16:15	971.4	269.8
4:30	971.4	254.40	16:30	971.4	271.6
4:45	971.4	255.70	16:45	971.4	272.6
5:00	971.4	256.70	17:00	971.4	279.4
5:15	971.4	259.50	17:15	971.4	283.5
5:30	971.4	264.60	17:30	971.4	291.7
6:45	971.4	268.60	17:45	971.4	303.3
6:00	971.4	274.60	18:00	971.4	313
6:15	971.4	288.40	18:15	971.4	320.8
6:30	971.4	290.20	18:30	971.4	321.6
6:45	971.4	294.10	18:45	971.4	316.7
7:00	971.4	292.70	19:00	971.4	316.4
7:15	971.4	290.70	19:15	971.4	308.4
7:30	971.4	286.20	19:30	971.4	307.2
7:45	971.4	281.30	19:45	971.4	298
8:00	971.4	278.30	20:00	971.4	294.4
8:15	971.4	278.00	20:15	971.4	296.9
8:30	971.4	276.00	20:30	971.4	297.2
8:45	971.4	274.30	20:45	971.4	293
9:00	971.4	275.80	21:00	971.4	290.5
9:15	971.4	272.50	21:15	971.4	289.8
9:30	971.4	273.90	21:30	971.4	287.1
9:45	971.4	272.40	21:45	971.4	280
10:00	971.4	273.70	22:00	971.4	276.8
10:15	971.4	269.70	22:15	971.4	269.9
10:30	971.4	273.60	22:30	971.4	268.6
10:45	971.4	273.80	22:45	971.4	264.6
11:00	971.4	276.70	23:00	971.4	262
11:15	971.4	279.40	23:15	971.4	260.6
11:30	971.4	280.20	23:30	971.4	259.7
11:45	971.4	282.40	23:45	971.4	258.4

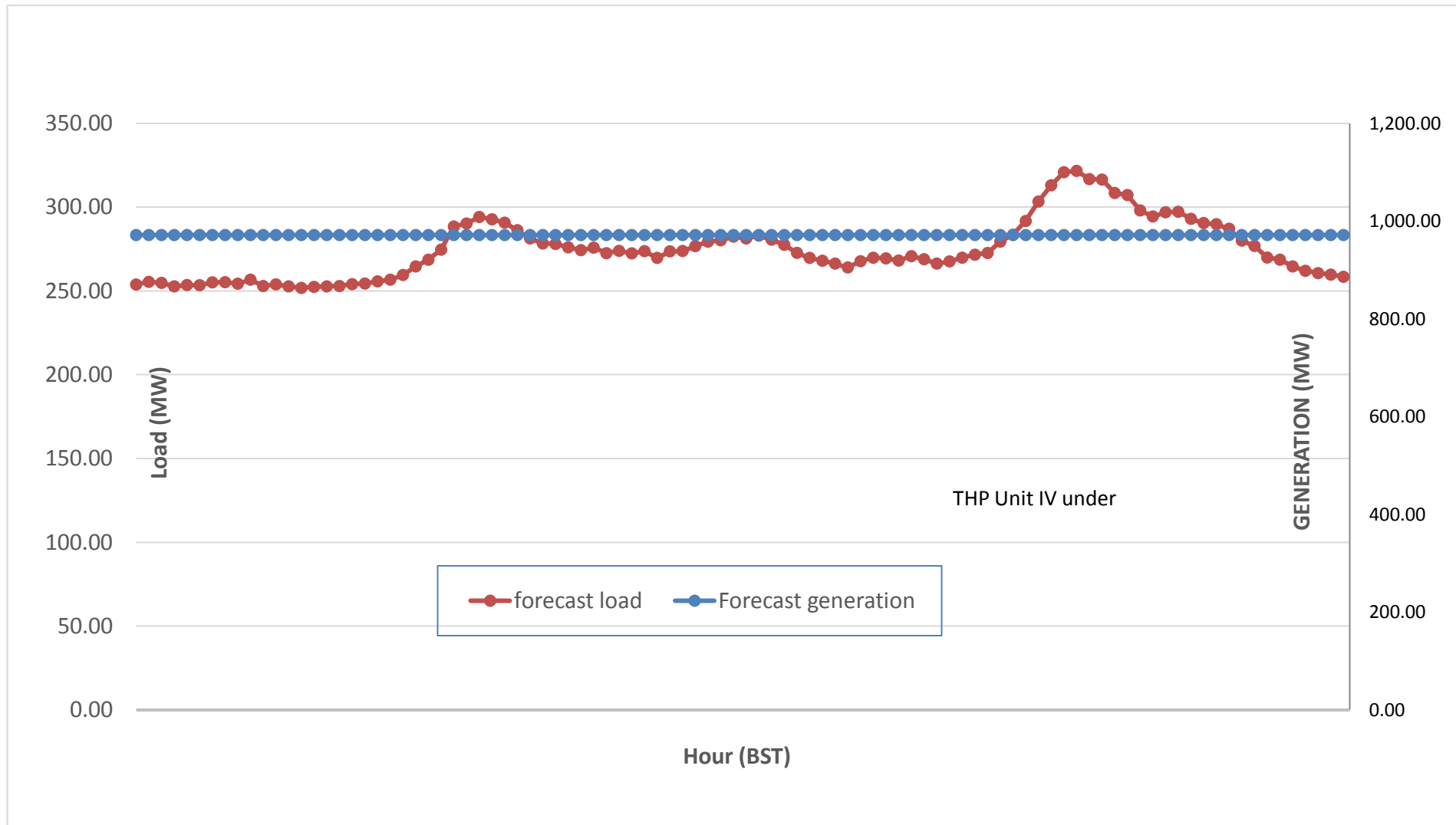
Yours faithfully,
 Pema Lhamo



Message No.: Enter your message number
 From: Shift In-charge, Control Room

Date: 20-Oct-17
 Time: 11:10

Scheduled Generation & Load Forecast for Tomorrow (21-Oct-2017).



Yours faithfully,
 Pema Lhamo

	MW
Scheduled Peak Generation(21-Oct-2017).	376.90
Forecast Peak Load(21-Oct-2017).	300.60