



འབྲུག་གླིང་གི་ལམ་འཛིན།

Bhutan Power Corporation Ltd.  
Bhutan Power System Operator  
Thimphu: Bhutan



Message No.: Enter your message number  
From: Shift In-charge, Control Room

Date: 16-Oct-17  
Time: 10:19

To  
Managing Director, BPC. Email: gemtshering@bpc.bt  
Director, O&MD, DGPC. Email: director.omb@drukgreen.com  
General Manager, TD, BPC. Email: ktobgye@bpc.bt  
General Manager, DCSD, BPC. Email: sandeeprai@bpc.bt  
General Manager, BPSO, BPC. Email: ujjwaldahal@bpc.bt

Sub: Load Generation Balance Report of Yesterday (15-Oct-2017).

Hours (BST)	Forecast		Actual		Hours (BST)	Forecast		Actual	
	Generation	Load	Generation	Load		Generation	Load	Generation	Load
0:00	1261.6	245	1312.9	260.9	12:00	1261.6	266.5	1206.5	270.43
0:15	1261.6	245.8	1305.0	261.5	12:15	1261.6	268.6	1205.4	271.41
0:30	1261.6	245.8	1305.2	257.8	12:30	1261.6	265.1	1205.1	275.20
0:45	1261.6	245.2	1306.8	260.4	12:45	1261.6	260.7	1205.8	274.03
1:00	1261.6	241.1	1309.0	258.2	13:00	1261.6	262	1206.8	273.77
1:15	1261.6	244.7	1308.8	254.8	13:15	1261.6	260.4	1206.5	275.30
1:30	1261.6	245	1308.8	257.9	13:30	1261.6	259.9	1205.5	270.05
1:45	1261.6	245.2	1276.3	258.9	13:45	1261.6	257.4	1203.3	266.02
2:00	1261.6	242.8	1280.2	255.3	14:00	1261.6	256.7	1202.8	262.99
2:15	1261.6	243.1	1275.8	258.3	14:15	1261.6	260.6	1199.4	266.59
2:30	1261.6	241.8	1274.8	255.4	14:30	1261.6	259	1197.4	267.52
2:45	1261.6	243.6	1274.7	256.6	14:45	1261.6	259.7	1203.1	267.70
3:00	1261.6	241.7	1270.1	259.0	15:00	1261.6	262.4	1203.1	263.36
3:15	1261.6	241.3	1269.2	257.6	15:15	1261.6	265	1204.9	260.57
3:30	1261.6	241.5	1223.8	258.5	15:30	1261.6	265.4	1200.1	266.65
3:45	1261.6	243	1223.2	256.2	15:45	1261.6	259.6	1203.3	254.59
4:00	1261.6	243.8	1224.3	247.7	16:00	1261.6	261.8	1202.7	252.30
4:15	1261.6	245.8	1222.0	248.4	16:15	1261.6	265.8	1203.9	266.51
4:30	1261.6	246	1219.6	241.6	16:30	1261.6	269.3	1193.6	260.42
4:45	1261.6	249.4	1221.4	248.0	16:45	1261.6	267	1194.3	266.41
5:00	1261.6	249.9	1226.8	246.1	17:00	1261.6	270.9	1198.0	262.19
5:15	1261.6	252.7	1205.4	248.9	17:15	1261.6	276.8	1172.2	271.16
5:30	1261.6	256.3	1205.3	250.4	17:30	1261.6	278.9	1174.6	284.85
6:45	1261.6	262.3	1204.5	255.4	17:45	1261.6	283.3	1177.1	291.30
6:00	1261.6	271.8	1204.8	262.6	18:00	1261.6	290.3	1176.7	298.96
6:15	1261.6	283.2	1204.8	262.0	18:15	1261.6	301.4	1170.8	306.96
6:30	1261.6	284.1	1206.4	272.3	18:30	1261.6	307.1	1169.9	311.47
6:45	1261.6	287.7	1204.4	271.2	18:45	1261.6	305.3	1169.3	303.38
7:00	1261.6	287.2	1201.1	272.3	19:00	1261.6	304.7	1170.6	306.28
7:15	1261.6	281.9	1211.1	274.6	19:15	1261.6	299.5	1168.0	305.13
7:30	1261.6	274.4	1206.2	271.3	19:30	1261.6	298.8	1166.1	299.80
7:45	1261.6	270.3	1204.9	271.2	19:45	1261.6	292.8	1168.2	291.95
8:00	1261.6	267.8	1204.2	263.8	20:00	1261.6	286.8	1172.5	290.89
8:15	1261.6	266.2	1202.3	265.0	20:15	1261.6	288	1166.7	289.25
8:30	1261.6	266.6	1203.8	267.7	20:30	1261.6	285.6	1165.1	289.73
8:45	1261.6	264.8	1206.8	269.1	20:45	1261.6	281.9	1166.1	281.47
9:00	1261.6	262.6	1202.5	270.6	21:00	1261.6	277.7	1168.9	286.77
9:15	1261.6	258.7	1205.7	266.6	21:15	1261.6	277.7	1129.9	283.35
9:30	1261.6	258.4	1206.1	265.5	21:30	1261.6	275.7	1126.0	276.87
9:45	1261.6	257.4	1206.9	267.0	21:45	1261.6	270.3	1130.2	280.24
10:00	1261.6	263.6	1205.9	268.3	22:00	1261.6	267	1130.8	278.76
10:15	1261.6	262	1202.3	265.6	22:15	1261.6	261.8	1132.3	272.48
10:30	1261.6	262.9	1204.7	266.7	22:30	1261.6	260.7	1129.4	268.83
10:45	1261.6	262.9	1206.6	272.9	22:45	1261.6	257.7	1133.4	266.45
11:00	1261.6	266.1	1207.5	275.5	23:00	1261.6	253.7	1127.6	257.30
11:15	1261.6	268.4	1205.1	273.4	23:15	1261.6	250.9	1129.7	241.08
11:30	1261.6	269.5	1203.4	267.6	23:30	1261.6	250.1	1131.7	251.80
11:45	1261.6	266.8	1205.3	273.5	23:45	1261.6	248.2	1131.7	257.48

Yours faithfully,  
Kinley Wangmo

Coincidental peak load of Day(Last year):	
264.05	15-Oct-16
Maximum Load till date:	
344.02 MW	18-Mar-17



འབྲུག་རྒྱལ་ཁོ་ལས་འཛིན།

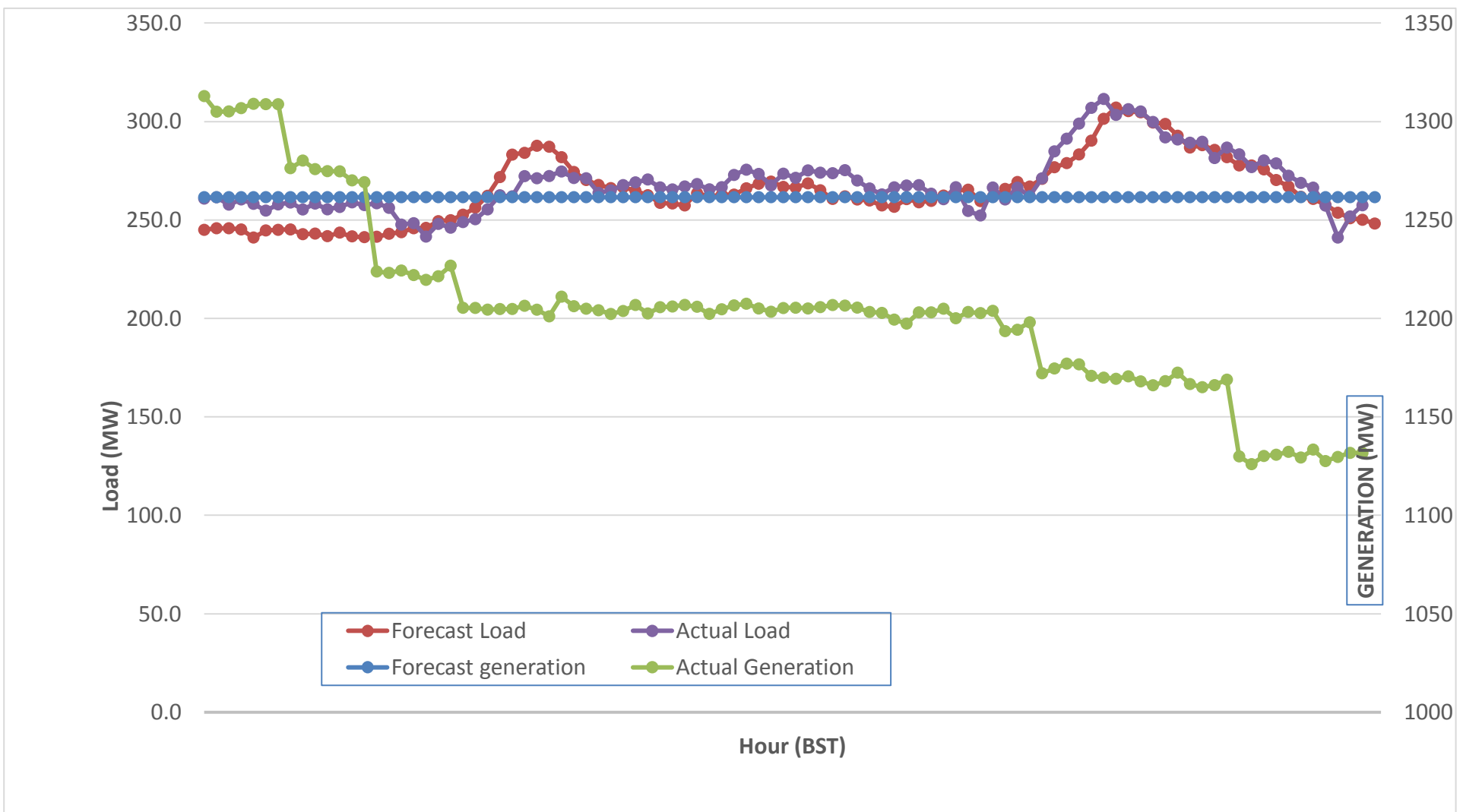
Bhutan Power Corporation Ltd.  
 Bhutan Power System Operator  
 Thimphu: Bhutan



Message No.: Enter your message number  
 From: Shift In-charge, Control Room

Date: 16-Oct-17  
 Time: 10:19

Forecast Generation & Load with Actual Generation & Load (15-Oct-2017).



Yours faithfully,  
 Kinley Wangmo

	MW
Peak Co-incident Generation(15-Oct-2017).	1312.94
Peak Co-incident Load(15-Oct-2017).	311.47

Coincidental peak load of Day(Last year):	
264.05	15-Oct-16
Maximum Load till date:	
344.02 MW	18-Mar-17

Telephone: +975-02335631; Fax: +975-02335632; Email: bhutansystemoperator@bpc.bt; www.bpc.bt



འབྲུག་གློག་ལེ་ལས་འཛིན།

Bhutan Power Corporation Ltd.  
Bhutan Power System Operator  
Thimphu: Bhutan



**Message No.:** Enter your message number  
**From:** Shift In-charge, Control Room

**Date:** 16-Oct-17  
**Time:** 10:19

**To**

Managing Director, BPC. Email: gemtshering@bpc.bt  
Director, O&MD, DGPC. Email: director.omid@drukgreen.com  
General Manager, TD, BPC. Email: thinleygyeltshen@bpc.bt  
General Manager, DCSD, BPC. Email: sandeprai@bpc.bt  
General Manager, BPSO, BPC. Email: ujjwaldahal@bpc.bt

**Sub:**

**Load Generation Balance Report of Today (16-Oct-2017).**

Hours (BST)	Forecast		Actual	
	Generation	Load	Generation	Load
0:00	1215.3	247.1	1131.5	251.43
0:15	1215.3	246.7	1128.7	247.06
0:30	1215.3	246.3	1132.3	250.86
0:45	1215.3	245.1	1129.7	251.64
1:00	1215.3	241.5	1132.8	242.94
1:15	1215.3	242	1132.0	243.55
1:30	1215.3	243.2	1130.0	238.16
1:45	1215.3	245	1134.5	242.95
2:00	1215.3	240.7	1134.7	246.24
2:15	1215.3	242.1	1130.9	249.97
2:30	1215.3	239.6	1136.0	245.96
2:45	1215.3	242.4	1134.0	247.82
3:00	1215.3	242.1	1133.9	247.19
3:15	1215.3	241.8	1128.0	243.42
3:30	1215.3	242	1130.7	247.75
3:45	1215.3	242.5	1125.8	256.46
4:00	1215.3	243.5	1130.8	254.03
4:15	1215.3	241.4	1127.5	254.17
4:30	1215.3	242.3	1132.3	250.38
4:45	1215.3	246.6	1127.4	247.20
5:00	1215.3	248.5	1127.7	249.09
5:15	1215.3	252.3	1129.9	254.62
5:30	1215.3	256.1	1127.2	260.84
5:45	1215.3	261.1	1129.4	265.98
6:00	1215.3	269.9	1130.4	259.54
6:15	1215.3	281.4	1128.3	267.72
6:30	1215.3	282.9	1132.6	272.23
6:45	1215.3	283.2	1130.8	283.48
7:00	1215.3	284.9	1129.0	286.59
7:15	1215.3	280.3	1136.9	281.38
7:30	1215.3	273	1134.9	269.55
7:45	1215.3	270.3	1133.0	259.54
8:00	1215.3	268.4	1136.8	271.51
8:15	1215.3	267	1133.0	271.61
8:30	1215.3	267.9	1135.3	268.87
8:45	1215.3	264.8	1205.3	256.66
9:00	1215.3	263.1	1206.4	266.97

<b>Coincidental peak load of Day(Last year):</b>	
246.13	16-Oct-17
<b>Maximum Load till date:</b>	
344.02 MW	18-Mar-17

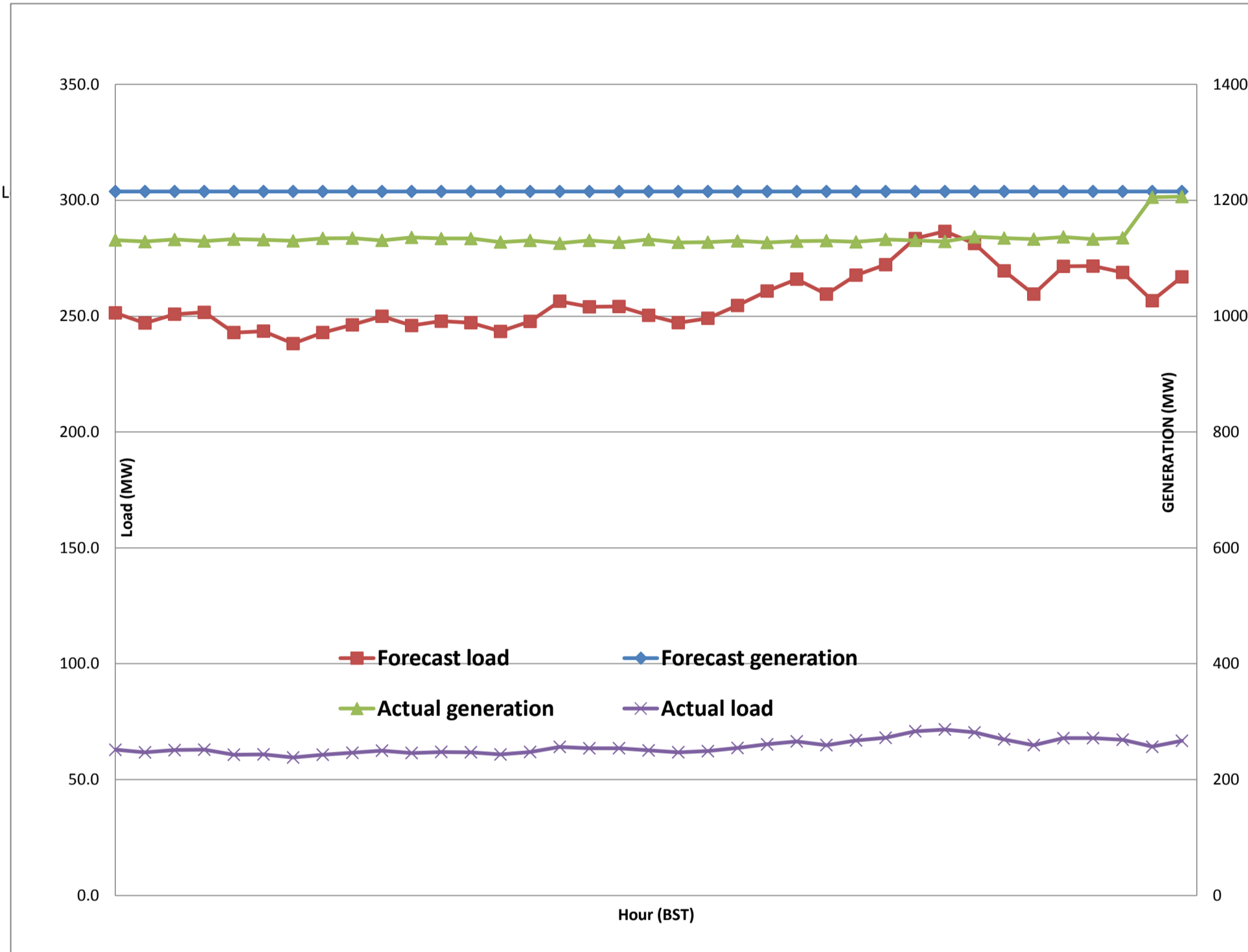
Yours faithfully,  
Kinley Wangmo



Message No.: Enter your message number  
 From: Shift In-charge, Control Room

10/1/2017 12:50 16-Oct-17  
 10/1/2017 12:50 10:19

Forecast Generation & Load with Actual Generation & Load of Today from 00:00hrs to 09:00hrs(16-Oct-2017).





འབྲུག་གྲོག་ལས་ཁུངས་ལྷན་ཁག།  
**Bhutan Power Corporation Ltd.**  
**Bhutan Power System Operator**  
 Thimphu: Bhutan



**Message No.:** Enter your message number  
**From:** Shift In-charge, Control Room  
**Date:** 16-Oct-17  
**Time:** 10:19  
**To:** Managing Director, BPC. Email: gemtshering@bpc.bt  
 Director, O&MD, DGPC. Email: director.umd@drukgreen.com  
 General Manager, TD, BPC. Email: ktobgye@bpc.bt  
 General Manager, BPSO, BPC. Email: ujjwaldahal@bpc.bt  
 Advisor, BPC. Email: bharattamang@bpc.bt  
**Sub:** Load Generation Balance Report of Tomorrow (17-Oct-2017).

###  
 ###

Hours (BST)	Forecast		Hours (BST)	Forecast	
	Generation	Load		Generation	Load
0:00	1165	249.80	12:00	1165	271.7
0:15	1165	250.90	12:15	1165	273
0:30	1165	249.40	12:30	1165	269.3
0:45	1165	248.30	12:45	1165	267.1
1:00	1165	244.10	13:00	1165	267.4
1:15	1165	245.20	13:15	1165	266.3
1:30	1165	247.00	13:30	1165	265.8
1:45	1165	248.00	13:45	1165	263.4
2:00	1165	244.50	14:00	1165	262.6
2:15	1165	246.40	14:15	1165	265.6
2:30	1165	243.50	14:30	1165	266.5
2:45	1165	246.50	14:45	1165	264.4
3:00	1165	246.60	15:00	1165	266.8
3:15	1165	245.40	15:15	1165	264.4
3:30	1165	246.40	15:30	1165	266.7
3:45	1165	245.70	15:45	1165	263.3
4:00	1165	245.70	16:00	1165	260.6
4:15	1165	243.70	16:15	1165	270
4:30	1165	243.90	16:30	1165	271
4:45	1165	246.20	16:45	1165	267.8
5:00	1165	248.00	17:00	1165	270.7
5:15	1165	252.30	17:15	1165	276.7
5:30	1165	255.90	17:30	1165	283.9
6:45	1165	260.30	17:45	1165	289.2
6:00	1165	267.60	18:00	1165	299.9
6:15	1165	278.80	18:15	1165	310.3
6:30	1165	280.70	18:30	1165	312
6:45	1165	281.80	18:45	1165	307.8
7:00	1165	281.70	19:00	1165	308.3
7:15	1165	278.20	19:15	1165	302
7:30	1165	273.10	19:30	1165	300.5
7:45	1165	270.10	19:45	1165	294.1
8:00	1165	267.50	20:00	1165	290.1
8:15	1165	267.20	20:15	1165	291.2
8:30	1165	267.40	20:30	1165	289.4
8:45	1165	266.60	20:45	1165	284.8
9:00	1165	264.90	21:00	1165	281.4
9:15	1165	263.10	21:15	1165	282.5
9:30	1165	261.80	21:30	1165	280.9
9:45	1165	257.80	21:45	1165	276.2
10:00	1165	264.50	22:00	1165	272.5
10:15	1165	262.10	22:15	1165	268.1
10:30	1165	265.20	22:30	1165	262.7
10:45	1165	268.10	22:45	1165	261.2
11:00	1165	271.00	23:00	1165	256
11:15	1165	271.30	23:15	1165	252.6
11:30	1165	270.80	23:30	1165	252.6
11:45	1165	269.50	23:45	1165	252.2

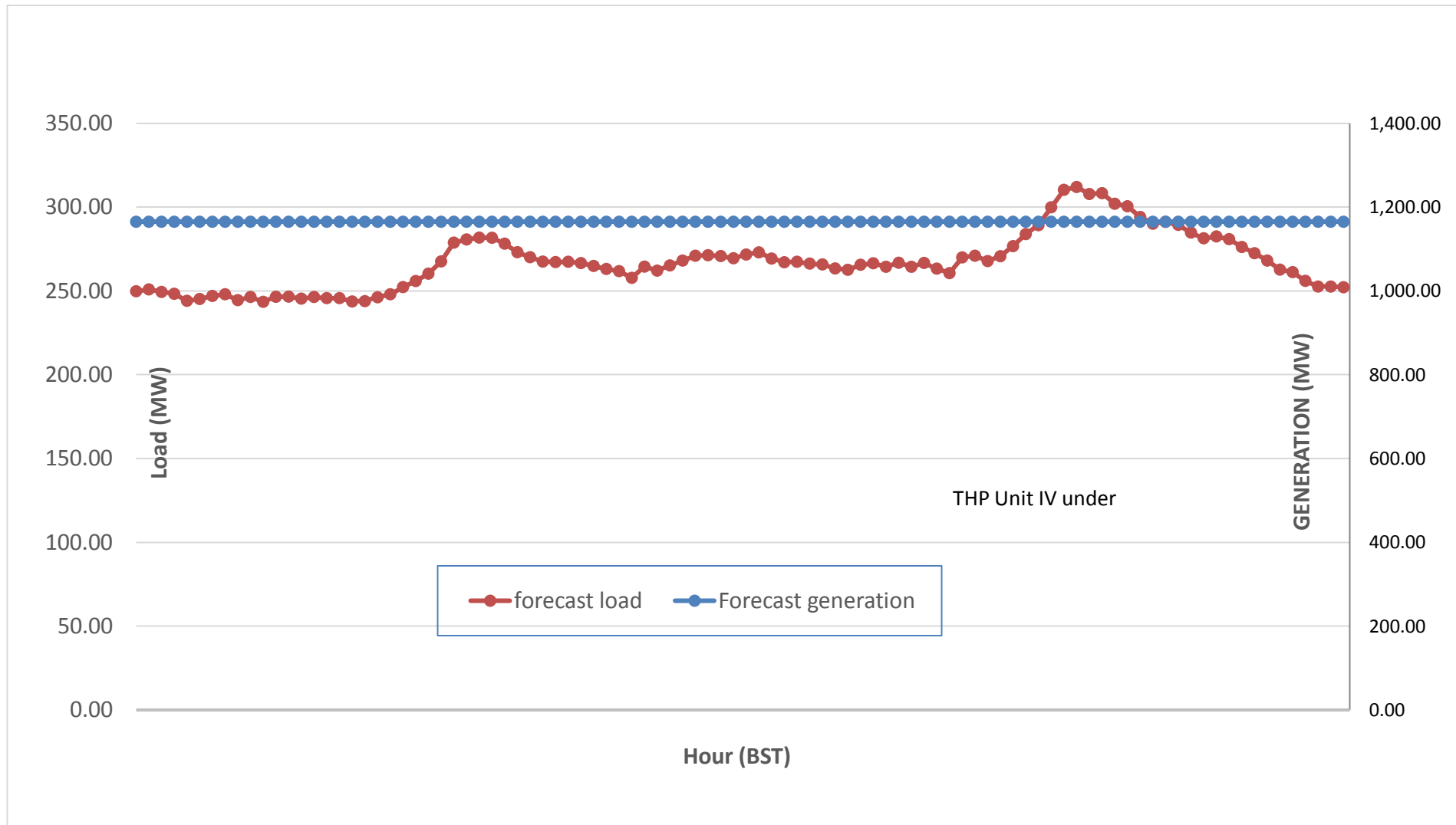
Yours faithfully,  
 Kinley Wangmo



Message No.: Enter your message number  
 From: Shift In-charge, Control Room

Date: 16-Oct-17  
 Time: 10:19

**Scheduled Generation & Load Forecast for Tomorrow (17-Oct-2017).**



Yours faithfully,  
 Kinley Wangmo

	MW
Scheduled Peak Generation(17-Oct-2017).	376.90
Forecast Peak Load(17-Oct-2017).	300.60