



ཕྱག་ལུག་གི་ལས་འཛིན།

Bhutan Power Corporation Ltd.
Bhutan Power System Operator
Thimphu: Bhutan



Message No.: Enter your message number
From: Shift In-charge, Control Room

Date: 14-Oct-17
Time: 11:49

To
Managing Director, BPC. Email: gemtshering@bpc.bt
Director, O&MD, DGPC. Email: director.omb@drukgreen.com
General Manager, TD, BPC. Email: ktobgye@bpc.bt
General Manager, DCSD, BPC. Email: sandeeprai@bpc.bt
General Manager, BPSO, BPC. Email: ujjwaldahal@bpc.bt

Sub: Load Generation Balance Report of Yesterday (13-Oct-2017).

Hours (BST)	Forecast		Actual		Hours (BST)	Forecast		Actual	
	Generation	Load	Generation	Load		Generation	Load	Generation	Load
0:00	1367.4	252.4	1246.7	222.4	12:00	1367.4	269	1265.5	271.19
0:15	1367.4	252.1	1248.1	222.1	12:15	1367.4	272.9	1296.1	272.48
0:30	1367.4	252.5	1237.1	221.1	12:30	1367.4	268.3	1294.6	260.83
0:45	1367.4	250.6	1216.8	215.6	12:45	1367.4	262.6	1292.3	259.69
1:00	1367.4	249.7	1226.6	216.3	13:00	1367.4	263.3	1291.2	269.04
1:15	1367.4	253.7	1223.6	218.1	13:15	1367.4	261.5	1290.4	271.20
1:30	1367.4	253.9	1224.6	210.9	13:30	1367.4	260.3	1310.7	269.25
1:45	1367.4	256.1	1214.3	218.2	13:45	1367.4	260.7	1308.3	264.86
2:00	1367.4	254	1213.8	214.4	14:00	1367.4	259.2	1312.5	259.70
2:15	1367.4	256.3	1216.8	215.5	14:15	1367.4	262.3	1314.0	263.25
2:30	1367.4	254.2	1217.6	212.3	14:30	1367.4	264.8	1307.9	261.97
2:45	1367.4	257.2	1216.4	210.6	14:45	1367.4	263.1	1310.8	268.36
3:00	1367.4	256.9	1216.3	214.3	15:00	1367.4	265.1	1313.4	271.10
3:15	1367.4	253.2	1218.0	213.8	15:15	1367.4	266.6	1305.2	270.09
3:30	1367.4	252.2	1222.3	216.4	15:30	1367.4	266.9	1308.6	273.41
3:45	1367.4	252.9	1218.3	217.7	15:45	1367.4	266.3	1309.7	262.65
4:00	1367.4	254.8	1219.6	218.2	16:00	1367.4	270.2	1307.3	263.80
4:15	1367.4	254.2	1222.8	227.3	16:15	1367.4	268.6	1310.2	277.40
4:30	1367.4	251.8	1223.0	228.0	16:30	1367.4	271	1306.6	279.90
4:45	1367.4	257.6	1225.6	232.3	16:45	1367.4	270.1	1304.1	277.05
5:00	1367.4	258.7	1226.1	232.0	17:00	1367.4	277.7	1308.9	269.34
5:15	1367.4	264	1240.1	232.6	17:15	1367.4	279.8	1310.3	281.88
5:30	1367.4	267.3	1234.5	234.4	17:30	1367.4	278.1	1308.2	295.91
6:45	1367.4	274.1	1234.0	237.2	17:45	1367.4	294.2	1307.3	296.32
6:00	1367.4	282.9	1238.4	247.1	18:00	1367.4	294.7	1306.8	300.20
6:15	1367.4	295.1	1236.5	261.9	18:15	1367.4	306.5	1308.8	311.03
6:30	1367.4	297.2	1239.6	273.6	18:30	1367.4	312.9	1306.2	317.98
6:45	1367.4	300.1	1236.8	271.2	18:45	1367.4	314.3	1309.3	311.16
7:00	1367.4	296.1	1242.2	265.4	19:00	1367.4	314.7	1313.3	310.12
7:15	1367.4	291.7	1238.3	272.7	19:15	1367.4	311.6	1309.9	301.60
7:30	1367.4	286.4	1232.5	264.5	19:30	1367.4	309.9	1306.3	294.99
7:45	1367.4	280.8	1233.2	256.9	19:45	1367.4	305.9	1311.7	286.13
8:00	1367.4	279.2	1237.4	250.4	20:00	1367.4	300.3	1306.8	279.60
8:15	1367.4	276.5	1232.4	246.6	20:15	1367.4	298.7	1304.6	291.75
8:30	1367.4	276.3	1234.6	252.0	20:30	1367.4	296.5	1306.9	286.97
8:45	1367.4	274.5	1233.5	252.1	20:45	1367.4	290	1306.0	282.38
9:00	1367.4	271.4	1231.5	251.8	21:00	1367.4	284.4	1308.3	285.24
9:15	1367.4	265.5	1228.8	250.8	21:15	1367.4	285	1305.7	283.73
9:30	1367.4	266.9	1238.7	249.7	21:30	1367.4	282.1	1309.2	284.80
9:45	1367.4	264.8	1242.9	246.7	21:45	1367.4	279.1	1307.3	280.74
10:00	1367.4	265.6	1244.9	247.4	22:00	1367.4	274.1	1307.0	275.04
10:15	1367.4	263.9	1262.7	270.4	22:15	1367.4	268.3	1300.1	270.45
10:30	1367.4	266	1268.8	268.6	22:30	1367.4	268.8	1289.7	267.71
10:45	1367.4	265.4	1268.8	268.2	22:45	1367.4	267	1290.6	256.53
11:00	1367.4	268.8	1265.0	269.7	23:00	1367.4	264.5	1290.2	258.78
11:15	1367.4	270.9	1267.4	265.1	23:15	1367.4	262.6	1289.4	254.02
11:30	1367.4	274	1262.3	270.6	23:30	1367.4	260.2	1284.8	246.41
11:45	1367.4	271.4	1262.6	274.4	23:45	1367.4	256.9	1288.3	255.28

Yours faithfully,
Jangchuk Selden

Coincidental peak load of Day(Last year):	
246.13	13-Oct-16
Maximum Load till date:	
344.02 MW	18-Mar-17



འབྲུག་རྒྱལ་ཁོ་ལས་འཛིན།

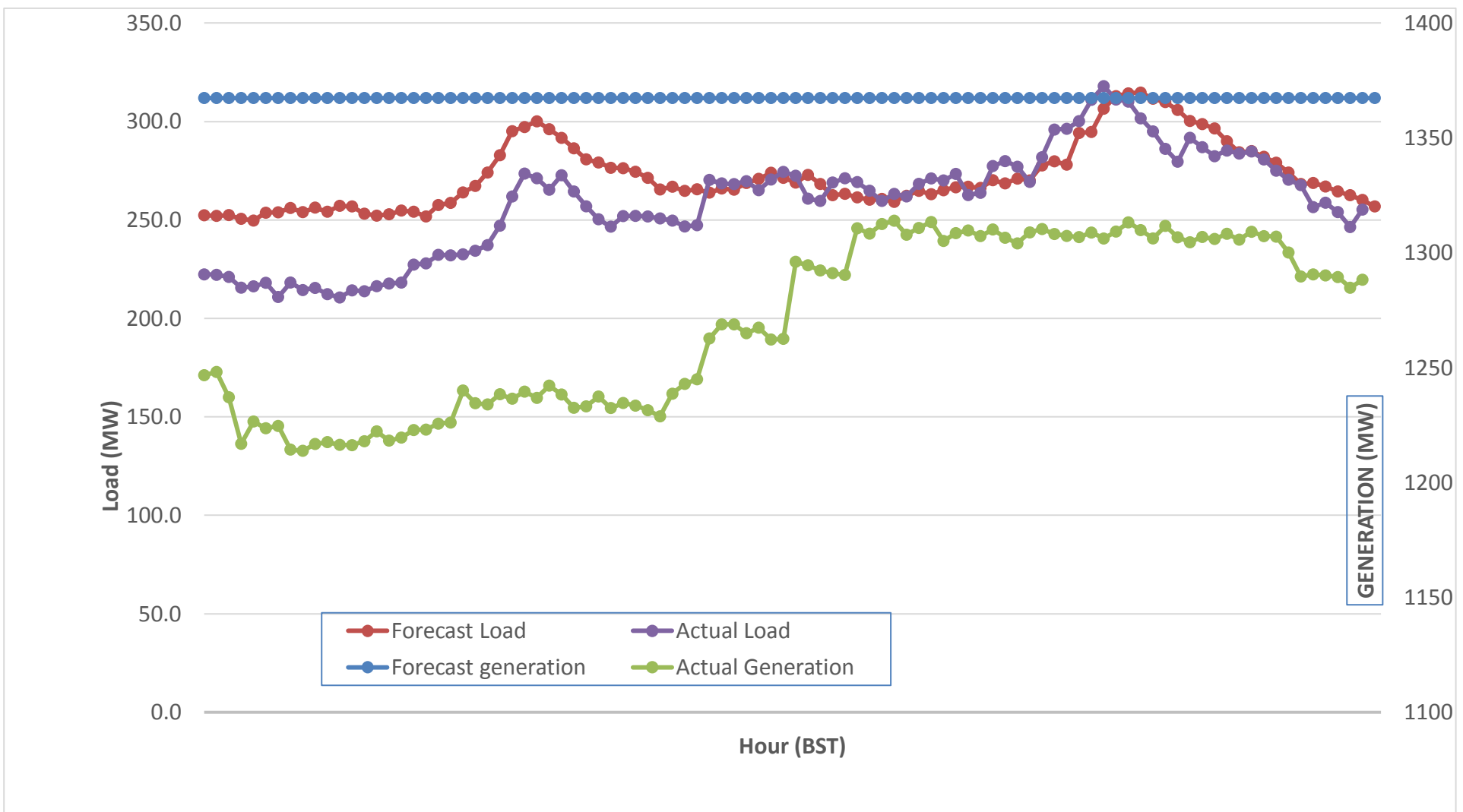
Bhutan Power Corporation Ltd.
 Bhutan Power System Operator
 Thimphu: Bhutan



Message No.: Enter your message number
 From: Shift In-charge, Control Room

Date: 14-Oct-17
 Time: 11:49

Forecast Generation & Load with Actual Generation & Load (13-Oct-2017).



Yours faithfully,
 Jangchuk Selden

	MW
Peak Co-incident Generation(13-Oct-2017).	1313.97
Peak Co-incident Load(13-Oct-2017).	317.98

Coincidental peak load of Day(Last year):	
246.13	13-Oct-16
Maximum Load till date:	
344.02 MW	18-Mar-17

Telephone: +975-02335631; Fax: +975-02335632; Email: bhutansystemoperator@bpc.bt; www.bpc.bt



འབྲུག་གྲོག་མེ་ལས་འཛིན།

Bhutan Power Corporation Ltd.
Bhutan Power System Operator
Thimphu: Bhutan



Message No.: Enter your message number
From: Shift In-charge, Control Room

Date: 14-Oct-17
Time: 11:49

To
Managing Director, BPC. Email: gemtshering@bpc.bt
Director, O&MD, DGPC. Email: director.omid@drukgreen.com
General Manager, TD, BPC. Email: thinleygyeltshen@bpc.bt
General Manager, DCSD, BPC. Email: sandeprai@bpc.bt
General Manager, BPSO, BPC. Email: ujjwaldahal@bpc.bt

Sub: Load Generation Balance Report of Today (14-Oct-2017).

Hours (BST)	Forecast		Actual	
	Generation	Load	Generation	Load
0:00	1311.8	251.9	1290.9	255.86
0:15	1311.8	252.5	1284.2	251.34
0:30	1311.8	253.4	1287.3	249.08
0:45	1311.8	251.9	1285.3	245.58
1:00	1311.8	249.3	1283.2	245.59
1:15	1311.8	253.1	1256.8	243.18
1:30	1311.8	252.3	1248.1	243.23
1:45	1311.8	253.5	1243.7	242.24
2:00	1311.8	251.6	1247.2	242.29
2:15	1311.8	251.6	1249.2	243.16
2:30	1311.8	250.5	1215.8	239.04
2:45	1311.8	253.4	1215.0	242.30
3:00	1311.8	251	1221.3	245.92
3:15	1311.8	248	1215.7	245.21
3:30	1311.8	249	1218.8	241.90
3:45	1311.8	249.9	1219.6	241.29
4:00	1311.8	251.6	1216.5	241.67
4:15	1311.8	251.9	1221.7	241.41
4:30	1311.8	251.1	1227.6	233.03
4:45	1311.8	255.5	1221.3	237.46
5:00	1311.8	255.9	1225.3	245.88
5:15	1311.8	259.9	1230.1	243.97
5:30	1311.8	263.7	1227.4	248.84
5:45	1311.8	269.5	1225.2	252.83
6:00	1311.8	278.1	1225.8	258.99
6:15	1311.8	290.2	1231.4	267.44
6:30	1311.8	289.6	1228.2	268.99
6:45	1311.8	295	1229.3	269.71
7:00	1311.8	292.9	1229.5	267.54
7:15	1311.8	286.9	1226.8	269.27
7:30	1311.8	281.5	1231.1	269.49
7:45	1311.8	276.6	1230.5	269.51
8:00	1311.8	274.3	1225.9	275.21
8:15	1311.8	272.5	1234.7	266.20
8:30	1311.8	271.5	1226.9	264.02
8:45	1311.8	270.8	1197.3	261.91
9:00	1311.8	266	1163.4	263.63

Coincidental peak load of Day(Last year):	
246.13	14-Oct-17

Maximum Load till date:	
344.02 MW	18-Mar-17

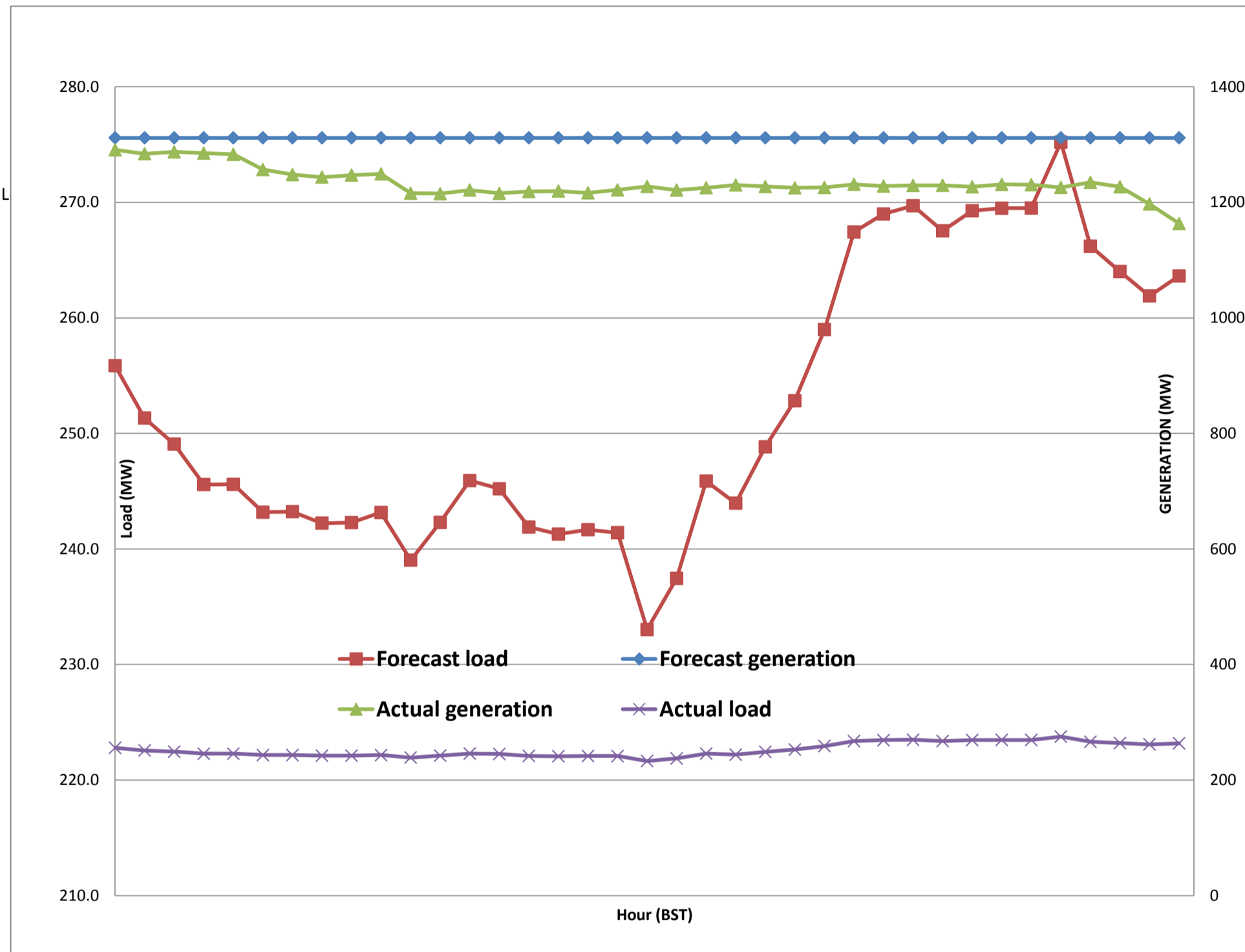
Yours faithfully,
Jangchuk Selden



Message No.: Enter your message number
 From: Shift In-charge, Control Room

10/1/2017 12:50 14-Oct-17
 10/1/2017 12:50 11:49

Forecast Generation & Load with Actual Generation & Load of Today from 00:00hrs to 09:00hrs(14-Oct-2017).





འབྲུག་གྲོག་ལས་ཁུངས་ལྷན་ཁག།
Bhutan Power Corporation Ltd.
Bhutan Power System Operator
 Thimphu: Bhutan



Message No.: Enter your message number
From: Shift In-charge, Control Room
Date: 14-Oct-17
Time: 11:49
To: Managing Director, BPC. Email: gemtshering@bpc.bt
 Director, O&MD, DGPC. Email: director.umd@drukgreen.com
 General Manager, TD, BPC. Email: ktobgye@bpc.bt
 General Manager, BPSO, BPC. Email: ujjwaldahal@bpc.bt
 Advisor, BPC. Email: bharattamang@bpc.bt
Sub: Load Generation Balance Report of Tomorrow (15-Oct-2017).

 ###

Hours (BST)	Forecast		Hours (BST)	Forecast	
	Generation	Load		Generation	Load
0:00	1261.6	245.00	12:00	1261.6	266.5
0:15	1261.6	245.80	12:15	1261.6	268.6
0:30	1261.6	245.80	12:30	1261.6	265.1
0:45	1261.6	245.20	12:45	1261.6	260.7
1:00	1261.6	241.10	13:00	1261.6	262
1:15	1261.6	244.70	13:15	1261.6	260.4
1:30	1261.6	245.00	13:30	1261.6	259.9
1:45	1261.6	245.20	13:45	1261.6	257.4
2:00	1261.6	242.80	14:00	1261.6	256.7
2:15	1261.6	243.10	14:15	1261.6	260.6
2:30	1261.6	241.80	14:30	1261.6	259
2:45	1261.6	243.60	14:45	1261.6	259.7
3:00	1261.6	241.70	15:00	1261.6	262.4
3:15	1261.6	241.30	15:15	1261.6	265
3:30	1261.6	241.50	15:30	1261.6	265.4
3:45	1261.6	243.00	15:45	1261.6	259.6
4:00	1261.6	243.80	16:00	1261.6	261.8
4:15	1261.6	245.80	16:15	1261.6	265.8
4:30	1261.6	246.00	16:30	1261.6	269.3
4:45	1261.6	249.40	16:45	1261.6	267
5:00	1261.6	249.90	17:00	1261.6	270.9
5:15	1261.6	252.70	17:15	1261.6	276.8
5:30	1261.6	256.30	17:30	1261.6	278.9
6:45	1261.6	262.30	17:45	1261.6	283.3
6:00	1261.6	271.80	18:00	1261.6	290.3
6:15	1261.6	283.20	18:15	1261.6	301.4
6:30	1261.6	284.10	18:30	1261.6	307.1
6:45	1261.6	287.70	18:45	1261.6	305.3
7:00	1261.6	287.20	19:00	1261.6	304.7
7:15	1261.6	281.90	19:15	1261.6	299.5
7:30	1261.6	274.40	19:30	1261.6	298.8
7:45	1261.6	270.30	19:45	1261.6	292.8
8:00	1261.6	267.80	20:00	1261.6	286.8
8:15	1261.6	266.20	20:15	1261.6	288
8:30	1261.6	266.60	20:30	1261.6	285.6
8:45	1261.6	264.80	20:45	1261.6	281.9
9:00	1261.6	262.60	21:00	1261.6	277.7
9:15	1261.6	258.70	21:15	1261.6	277.7
9:30	1261.6	258.40	21:30	1261.6	275.7
9:45	1261.6	257.40	21:45	1261.6	270.3
10:00	1261.6	263.60	22:00	1261.6	267
10:15	1261.6	262.00	22:15	1261.6	261.8
10:30	1261.6	262.90	22:30	1261.6	260.7
10:45	1261.6	262.90	22:45	1261.6	257.7
11:00	1261.6	266.10	23:00	1261.6	253.7
11:15	1261.6	268.40	23:15	1261.6	250.9
11:30	1261.6	269.50	23:30	1261.6	250.1
11:45	1261.6	266.80	23:45	1261.6	248.2

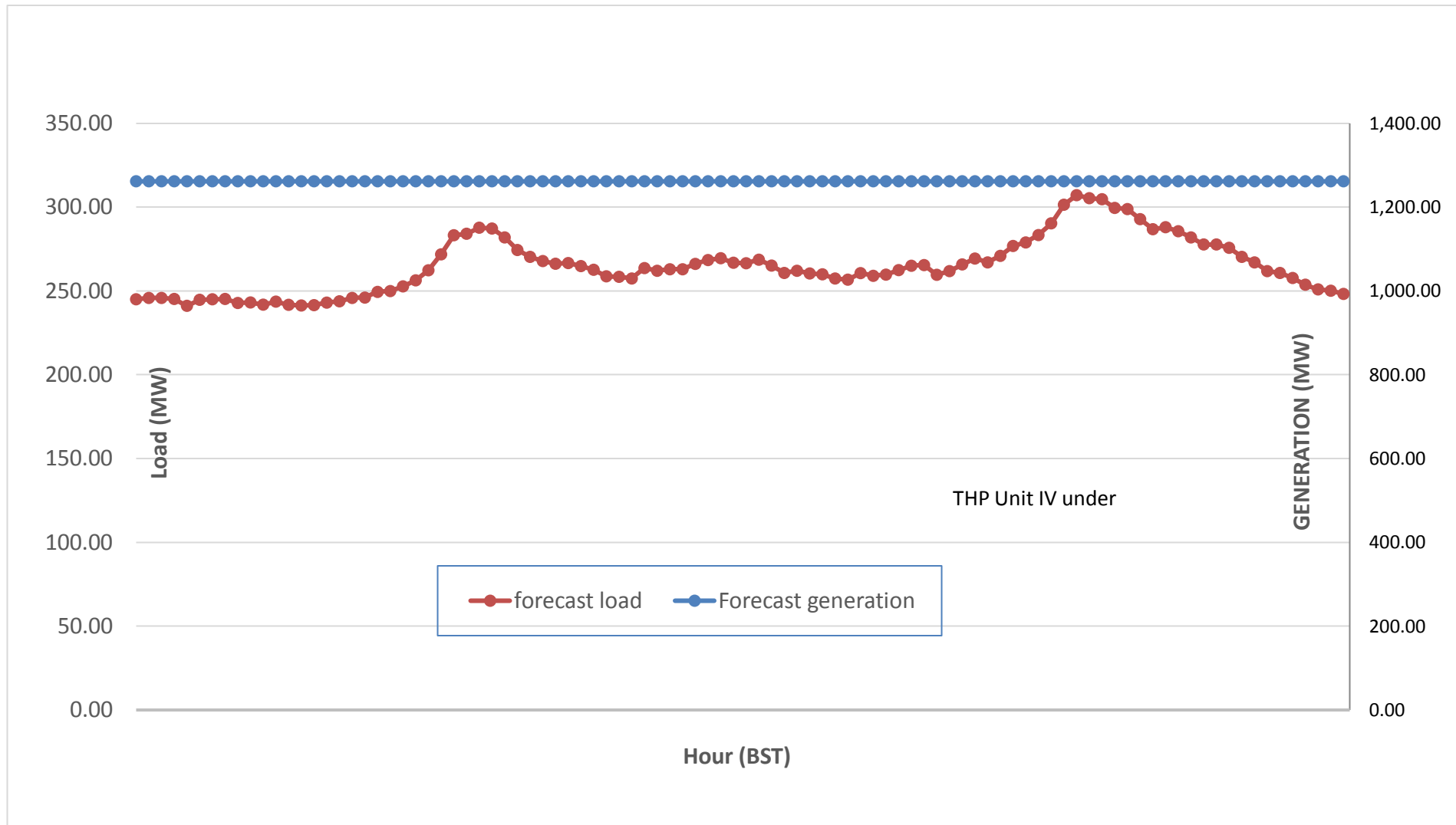
Yours faithfully,
 Jangchuk Selden



Message No.: Enter your message number
 From: Shift In-charge, Control Room

Date: 14-Oct-17
 Time: 11:49

Scheduled Generation & Load Forecast for Tomorrow (15-Oct-2017).



Yours faithfully,
 Jangchuk Selden

	MW
Scheduled Peak Generation(15-Oct-2017).	376.90
Forecast Peak Load(15-Oct-2017).	300.60