



འབྲུག་གྲོག་མེ་ལས་འཛིན།

Bhutan Power Corporation Ltd.
Bhutan Power System Operator
Thimphu: Bhutan



Message No.: Enter your message number
From: Shift In-charge, Control Room

Date: 13-Oct-17
Time: 10:16

To
Managing Director, BPC. Email: gemtshering@bpc.bt
Director, O&MD, DGPC. Email: director.umd@drukgreen.com
General Manager, TD, BPC. Email: ktobgye@bpc.bt
General Manager, DCSD, BPC. Email: sandeeprai@bpc.bt
General Manager, BPSO, BPC. Email: ujjwaldahal@bpc.bt

Sub: Load Generation Balance Report of Yesterday (12-Oct-2017).

Hours (BST)	Forecast		Actual		Hours (BST)	Forecast		Actual	
	Generation	Load	Generation	Load		Generation	Load	Generation	Load
0:00	1474.3	249.2	1366.8	248.4	12:00	1474.3	272.4	1288.2	247.63
0:15	1474.3	248.5	1368.0	251.0	12:15	1474.3	277.7	1288.9	252.74
0:30	1474.3	247	1365.8	250.4	12:30	1474.3	271.9	1289.0	259.99
0:45	1474.3	247.7	1367.0	251.7	12:45	1474.3	266.7	1288.3	246.27
1:00	1474.3	248.2	1364.4	246.1	13:00	1474.3	266.6	1287.6	248.86
1:15	1474.3	250.4	1364.8	249.3	13:15	1474.3	264.9	1284.3	244.88
1:30	1474.3	252.1	1366.6	246.9	13:30	1474.3	264.1	1289.2	248.65
1:45	1474.3	252.9	1365.5	238.8	13:45	1474.3	263.5	1283.5	249.07
2:00	1474.3	250.5	1367.6	241.4	14:00	1474.3	263	1287.0	244.73
2:15	1474.3	253.4	1368.1	236.9	14:15	1474.3	266.1	1248.2	243.52
2:30	1474.3	250.6	1369.4	233.8	14:30	1474.3	269.4	1286.3	244.44
2:45	1474.3	253.8	1366.5	232.1	14:45	1474.3	265.9	1290.0	246.38
3:00	1474.3	254.8	1370.2	231.0	15:00	1474.3	270.1	1292.7	248.90
3:15	1474.3	250.8	1366.2	235.8	15:15	1474.3	270.8	1291.5	250.64
3:30	1474.3	249.8	1365.9	238.4	15:30	1474.3	270.5	1293.4	251.22
3:45	1474.3	250.4	1365.0	235.3	15:45	1474.3	271.4	1292.3	244.82
4:00	1474.3	253.5	1368.8	236.9	16:00	1474.3	273	1294.2	244.16
4:15	1474.3	252.4	1374.7	240.2	16:15	1474.3	272.1	1297.9	247.08
4:30	1474.3	249.6	1369.9	242.3	16:30	1474.3	275.4	1297.1	250.87
4:45	1474.3	255.1	1366.6	245.9	16:45	1474.3	274.3	1387.4	247.41
5:00	1474.3	256.6	1363.5	246.8	17:00	1474.3	280.9	1386.0	255.35
5:15	1474.3	261.2	1325.5	244.3	17:15	1474.3	281.8	1387.9	265.39
5:30	1474.3	263.8	1327.8	250.1	17:30	1474.3	277	1293.9	269.59
6:45	1474.3	271.6	1326.6	253.2	17:45	1474.3	295.6	1296.4	282.96
6:00	1474.3	280.3	1329.8	261.0	18:00	1474.3	296.2	1227.3	273.27
6:15	1474.3	291.1	1308.6	276.2	18:15	1474.3	308.7	1273.2	287.79
6:30	1474.3	293.6	1308.2	276.3	18:30	1474.3	315.6	1273.2	283.67
6:45	1474.3	297.8	1306.3	279.0	18:45	1474.3	316.5	1272.4	275.87
7:00	1474.3	293.5	1308.3	280.3	19:00	1474.3	317.3	1271.1	273.26
7:15	1474.3	289.7	1288.9	275.8	19:15	1474.3	313.1	1270.9	268.52
7:30	1474.3	286	1290.6	267.1	19:30	1474.3	311.4	1272.7	264.01
7:45	1474.3	277.8	1288.2	262.4	19:45	1474.3	307.8	1272.8	261.05
8:00	1474.3	276.4	1286.1	258.1	20:00	1474.3	302.9	1269.7	261.40
8:15	1474.3	274.2	1287.6	258.8	20:15	1474.3	300.7	1272.5	247.32
8:30	1474.3	274.5	1287.3	257.9	20:30	1474.3	297.8	1269.8	256.77
8:45	1474.3	275.5	1290.0	259.7	20:45	1474.3	292.1	1266.4	257.55
9:00	1474.3	271.6	1289.0	247.4	21:00	1474.3	287.2	1264.6	246.02
9:15	1474.3	269.3	1288.6	249.1	21:15	1474.3	288.1	1288.9	247.50
9:30	1474.3	269.4	1285.9	249.1	21:30	1474.3	283.1	1276.1	248.30
9:45	1474.3	268.2	1288.6	247.4	21:45	1474.3	280.6	1273.3	236.42
10:00	1474.3	267.5	1287.8	249.0	22:00	1474.3	276.8	1270.3	238.41
10:15	1474.3	268.9	1285.5	252.1	22:15	1474.3	269.6	1271.3	235.28
10:30	1474.3	269.2	1289.9	253.0	22:30	1474.3	270.7	1260.0	228.75
10:45	1474.3	268	1291.0	256.8	22:45	1474.3	268.9	1250.6	223.66
11:00	1474.3	271.1	1287.6	253.5	23:00	1474.3	266	1252.8	217.91
11:15	1474.3	274.4	1287.2	254.8	23:15	1474.3	264.5	1217.3	214.43
11:30	1474.3	277.7	1287.3	258.8	23:30	1418.5	262.5	1216.0	216.23
11:45	1474.3	274.9	1286.9	254.5	23:45	1418.5	257.3	1232.3	215.20

Yours faithfully,

Sign:Pema lhamo

Coincidental peak load of Day(Last year):	
251.32	12-Oct-16
Maximum Load till date:	
344.02 MW	18-Mar-17



འབྲུག་རྒྱལ་ཁོ་ལས་འཛིན།

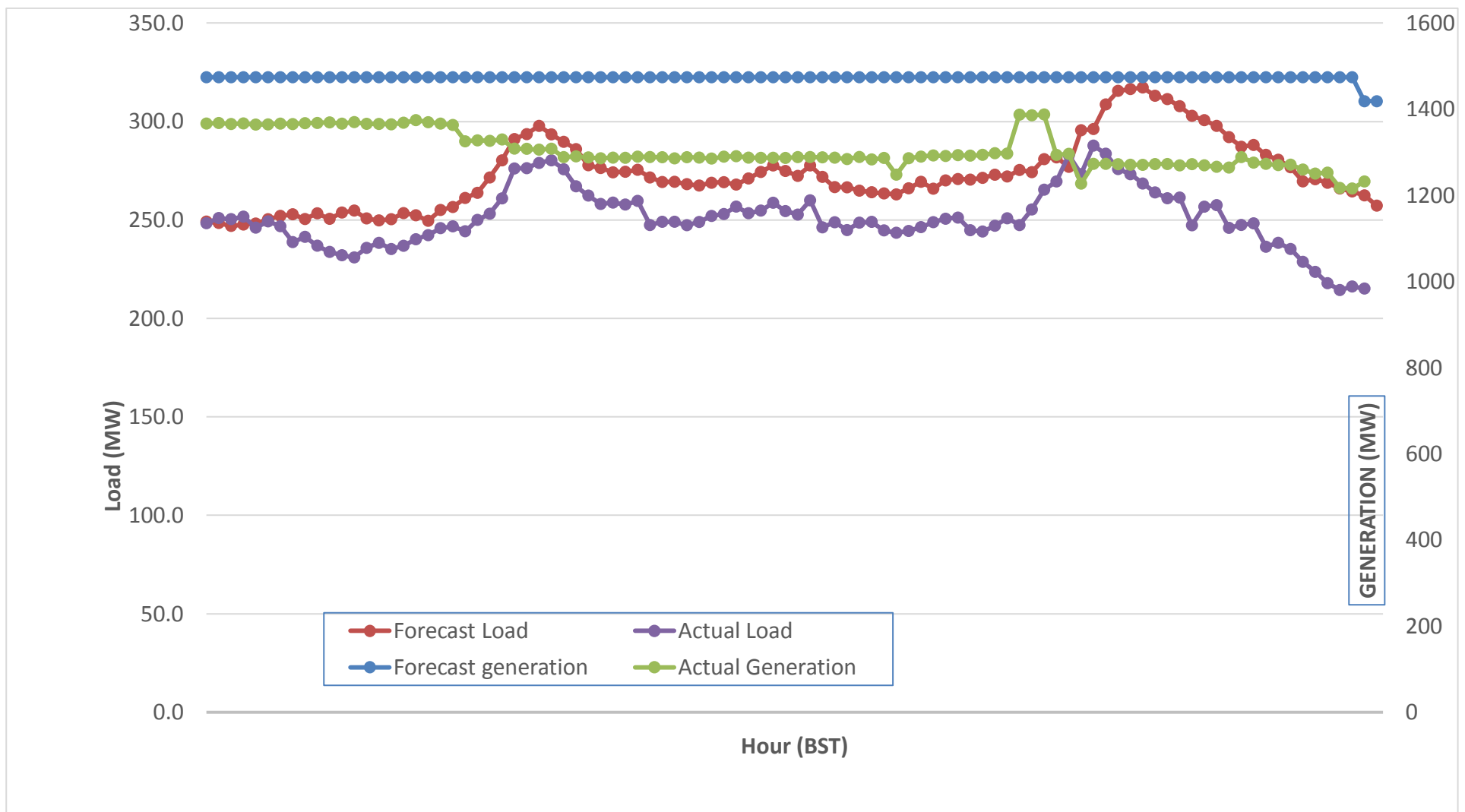
Bhutan Power Corporation Ltd.
 Bhutan Power System Operator
 Thimphu: Bhutan



Message No.: Enter your message number
 From: Shift In-charge, Control Room

Date: 13-Oct-17
 Time: 10:16

Forecast Generation & Load with Actual Generation & Load (12-Oct-2017).



Yours faithfully,
 Sign:Pema lhamo

	MW
Peak Co-incident Generation(12-Oct-2017).	1387.88
Peak Co-incident Load(12-Oct-2017).	287.79

Coincidental peak load of Day(Last year):	
251.32	12-Oct-16
Maximum Load till date:	
344.02 MW	18-Mar-17

Telephone: +975-02335631; Fax: +975-02335632; Email: bhutansystemoperator@bpc.bt; www.bpc.bt



འབྲུག་གྲོག་མོ་ལས་འཛིན།

Bhutan Power Corporation Ltd.
Bhutan Power System Operator
Thimphu: Bhutan



Message No.: Enter your message number
From: Shift In-charge, Control Room

Date: 13-Oct-17
Time: 10:16

To
Managing Director, BPC. Email: gemtshering@bpc.bt
Director, O&MD, DGPC. Email: director.omb@drukgreen.com
General Manager, TD, BPC. Email: thinleygyeltshen@bpc.bt
General Manager, DCSD, BPC. Email: sandeprai@bpc.bt
General Manager, BPSO, BPC. Email: ujjwaldahal@bpc.bt

Sub: Load Generation Balance Report of Today (13-Oct-2017).

Hours (BST)	Forecast		Actual	
	Generation	Load	Generation	Load
0:00	1367.4	252.4	1246.7	222.36
0:15	1367.4	252.1	1248.1	222.14
0:30	1367.4	252.5	1237.1	221.07
0:45	1367.4	250.6	1216.8	215.63
1:00	1367.4	249.7	1226.6	216.31
1:15	1367.4	253.7	1223.6	218.11
1:30	1367.4	253.9	1224.6	210.90
1:45	1367.4	256.1	1214.3	218.23
2:00	1367.4	254	1213.8	214.41
2:15	1367.4	256.3	1216.8	215.50
2:30	1367.4	254.2	1217.6	212.33
2:45	1367.4	257.2	1216.4	210.64
3:00	1367.4	256.9	1216.3	214.26
3:15	1367.4	253.2	1218.0	213.81
3:30	1367.4	252.2	1222.3	216.38
3:45	1367.4	252.9	1218.3	217.71
4:00	1367.4	254.8	1219.6	218.21
4:15	1367.4	254.2	1222.8	227.33
4:30	1367.4	251.8	1223.0	227.96
4:45	1367.4	257.6	1225.6	232.29
5:00	1367.4	258.7	1226.1	232.03
5:15	1367.4	264	1240.1	232.57
5:30	1367.4	267.3	1234.5	234.38
5:45	1367.4	274.1	1234.0	237.23
6:00	1367.4	282.9	1238.4	247.10
6:15	1367.4	295.1	1236.5	261.95
6:30	1367.4	297.2	1239.6	273.57
6:45	1367.4	300.1	1236.8	271.20
7:00	1367.4	296.1	1242.2	265.36
7:15	1367.4	291.7	1238.3	272.73
7:30	1367.4	286.4	1232.5	264.48
7:45	1367.4	280.8	1233.2	256.95
8:00	1367.4	279.2	1237.4	250.38
8:15	1367.4	276.5	1232.4	246.62
8:30	1367.4	276.3	1234.6	251.99
8:45	1367.4	274.5	1233.5	252.09
9:00	1367.4	271.4	1231.5	251.80

Coincidental peak load of Day(Last year):	
246.13	13-Oct-17

Maximum Load till date:	
344.02 MW	18-Mar-17

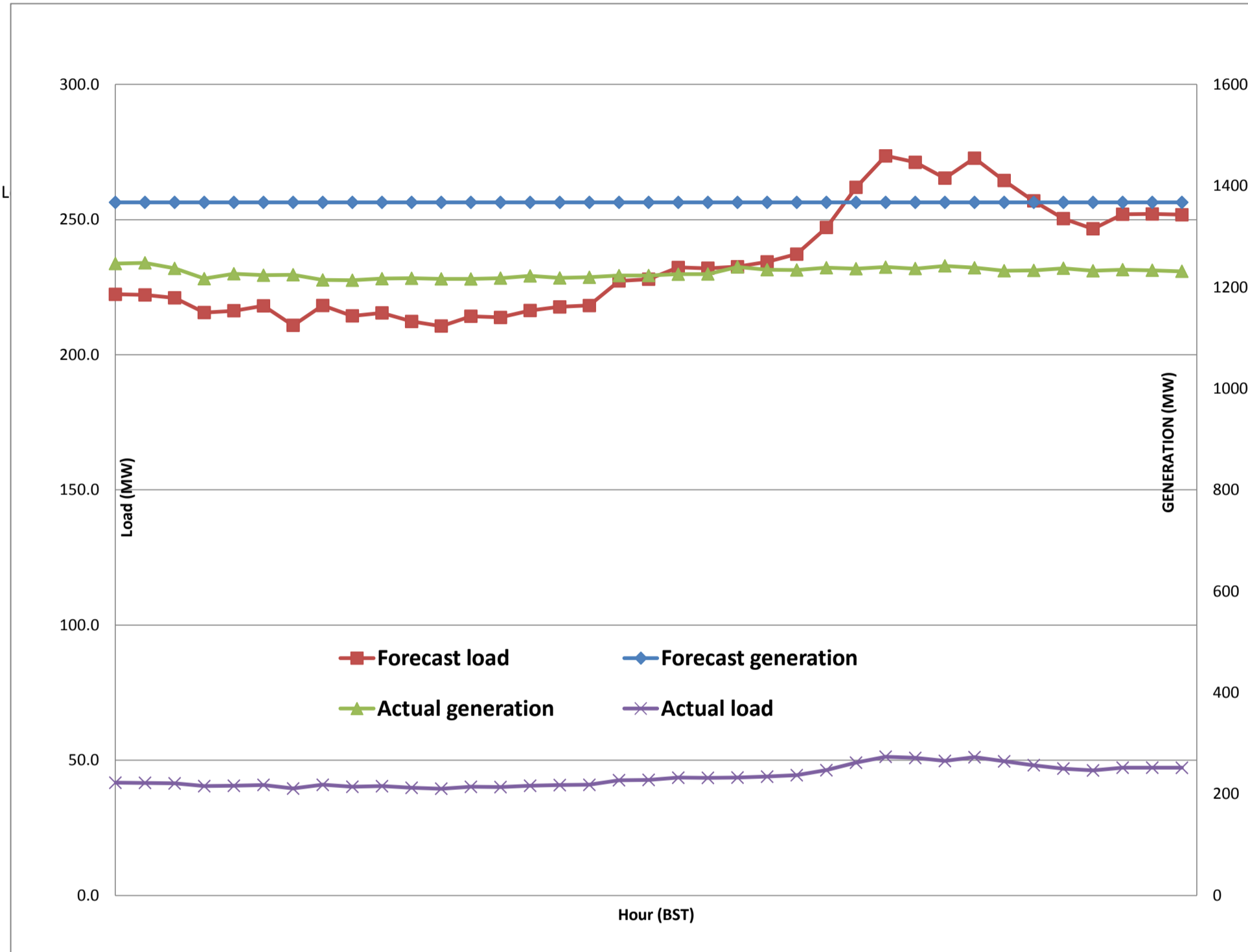
Yours faithfully,
Sign:Pema lhamo



Message No.: Enter your message number
 From: Shift In-charge, Control Room

10/1/2017 12:50 13-Oct-17
 10/1/2017 12:50 10:16

Forecast Generation & Load with Actual Generation & Load of Today from 00:00hrs to 09:00hrs(13-Oct-2017).





འབྲུག་གྲོག་ལས་ཁུངས་ལྷན་ཁག།
Bhutan Power Corporation Ltd.
Bhutan Power System Operator
 Thimphu: Bhutan



Message No.: Enter your message number
From: Shift In-charge, Control Room
Date: 13-Oct-17
Time: 10:16
To: Managing Director, BPC. Email: gemtshering@bpc.bt
 Director, O&MD, DGPC. Email: director.umd@drukgreen.com
 General Manager, TD, BPC. Email: ktobgye@bpc.bt
 General Manager, BPSO, BPC. Email: ujjwaldahal@bpc.bt
 Advisor, BPC. Email: bharattamang@bpc.bt
Sub: Load Generation Balance Report of Tomorrow (14-Oct-2017).

 ###

Hours (BST)	Forecast		Hours (BST)	Forecast	
	Generation	Load		Generation	Load
0:00	1311.8	251.90	12:00	1311.8	263.3
0:15	1311.8	252.50	12:15	1311.8	267.9
0:30	1311.8	253.40	12:30	1311.8	265.5
0:45	1311.8	251.90	12:45	1311.8	260.1
1:00	1311.8	249.30	13:00	1311.8	259.7
1:15	1311.8	253.10	13:15	1311.8	258.6
1:30	1311.8	252.30	13:30	1311.8	258
1:45	1311.8	253.50	13:45	1311.8	257.7
2:00	1311.8	251.60	14:00	1311.8	255.2
2:15	1311.8	251.60	14:15	1311.8	258
2:30	1311.8	250.50	14:30	1311.8	258.4
2:45	1311.8	253.40	14:45	1311.8	258.5
3:00	1311.8	251.00	15:00	1311.8	260.5
3:15	1311.8	248.00	15:15	1311.8	263.2
3:30	1311.8	249.00	15:30	1311.8	263.1
3:45	1311.8	249.90	15:45	1311.8	260.5
4:00	1311.8	251.60	16:00	1311.8	262.1
4:15	1311.8	251.90	16:15	1311.8	263.5
4:30	1311.8	251.10	16:30	1311.8	266
4:45	1311.8	255.50	16:45	1311.8	264.9
5:00	1311.8	255.90	17:00	1311.8	272.1
5:15	1311.8	259.90	17:15	1311.8	275.9
5:30	1311.8	263.70	17:30	1311.8	276.2
6:00	1311.8	269.50	17:45	1311.8	283
6:15	1311.8	278.10	18:00	1311.8	288.8
6:30	1311.8	290.20	18:15	1311.8	300
6:45	1311.8	289.60	18:30	1311.8	304.8
7:00	1311.8	295.00	18:45	1311.8	304.8
7:15	1311.8	292.90	19:00	1311.8	303.7
7:30	1311.8	286.90	19:15	1311.8	300.1
7:45	1311.8	281.50	19:30	1311.8	299.9
8:00	1311.8	276.60	19:45	1311.8	294.4
8:15	1311.8	274.30	20:00	1311.8	290.3
8:30	1311.8	272.50	20:15	1311.8	287.5
8:45	1311.8	271.50	20:30	1311.8	287.1
9:00	1311.8	270.80	20:45	1311.8	282
9:15	1311.8	266.00	21:00	1311.8	274.8
9:30	1311.8	261.60	21:15	1311.8	275.6
9:45	1311.8	262.10	21:30	1311.8	273.1
10:00	1311.8	260.20	21:45	1311.8	268.9
10:15	1311.8	262.30	22:00	1311.8	264.3
10:30	1311.8	260.20	22:15	1311.8	259.1
10:45	1311.8	262.80	22:30	1311.8	259.6
11:00	1311.8	262.90	22:45	1311.8	256.9
11:15	1311.8	266.00	23:00	1311.8	253.2
11:30	1311.8	268.00	23:15	1311.8	249.8
11:45	1311.8	270.00	23:30	1311.8	250.9
		266.00	23:45	1311.8	246.9

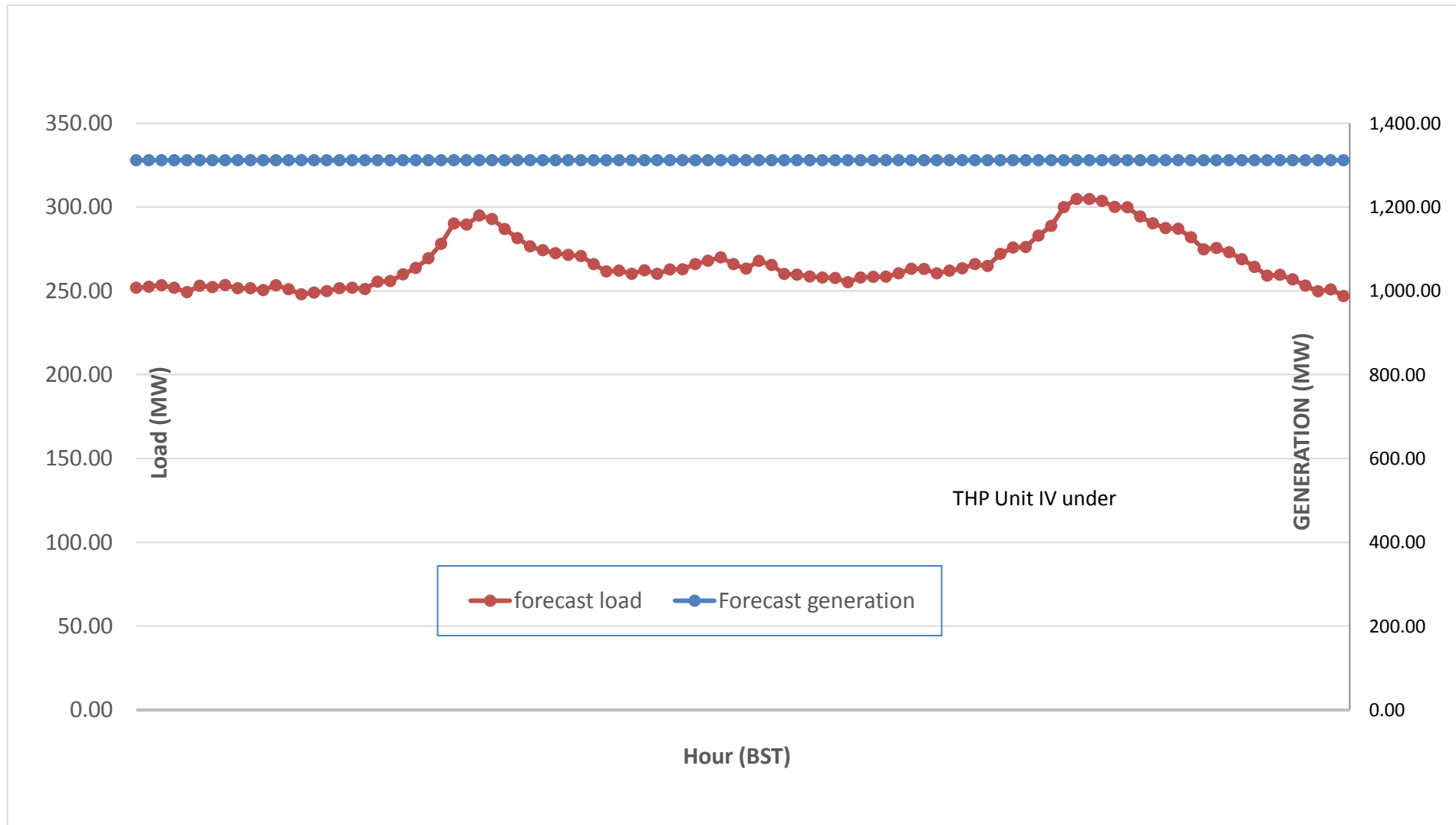
Yours faithfully,
 Sign:Pema lhamo



Message No.: Enter your message number
 From: Shift In-charge, Control Room

Date: 13-Oct-17
 Time: 10:16

Scheduled Generation & Load Forecast for Tomorrow (14-Oct-2017).



Yours faithfully,

Sign:Pema Iharr

	MW
Scheduled Peak Generation(14-Oct-2017).	376.90
Forecast Peak Load(14-Oct-2017).	300.60