



ཕྱག་ལུག་གི་ལས་འཛིན།

Bhutan Power Corporation Ltd.
Bhutan Power System Operator
Thimphu: Bhutan



Message No.: Enter your message number
From: Shift In-charge, Control Room

Date: 10-Oct-17
Time: 10:54

To
Managing Director, BPC. Email: gemtshering@bpc.bt
Director, O&MD, DGPC. Email: director.umd@drukgreen.com
General Manager, TD, BPC. Email: ktobgye@bpc.bt
General Manager, DCSD, BPC. Email: sandeeprai@bpc.bt
General Manager, BPSO, BPC. Email: ujjwaldahal@bpc.bt

Sub: Load Generation Balance Report of Yesterday (09-Oct-2017).

Hours (BST)	Forecast		Actual		Hours (BST)	Forecast		Actual	
	Generation	Load	Generation	Load		Generation	Load	Generation	Load
0:00	1261.5	251.7	1280.7	256.4	12:00	1261.5	266.5	1220.0	277.19
0:15	1261.5	248.1	1280.2	249.2	12:15	1261.5	264.9	1217.4	285.12
0:30	1261.5	249.4	1280.4	250.3	12:30	1261.5	262.7	1202.7	280.20
0:45	1261.5	245.9	1282.7	249.9	12:45	1261.5	260.4	1202.8	274.73
1:00	1261.5	245.1	1284.8	247.0	13:00	1261.5	261.2	1198.3	252.30
1:15	1261.5	247.5	1280.9	249.9	13:15	1261.5	259.7	1201.9	259.14
1:30	1261.5	245.1	1281.3	255.6	13:30	1261.5	258.3	1205.2	260.10
1:45	1261.5	247.5	1280.3	261.6	13:45	1261.5	257.6	1200.0	259.97
2:00	1261.5	246.1	1277.3	262.7	14:00	1261.5	254.6	1200.8	267.78
2:15	1261.5	247.8	1272.2	264.6	14:15	1261.5	257.2	1202.1	270.02
2:30	1261.5	247.9	1274.9	258.9	14:30	1261.5	256.7	1190.3	275.27
2:45	1261.5	250.2	1273.2	266.4	14:45	1261.5	259.2	1187.3	274.22
3:00	1261.5	248.7	1272.9	267.7	15:00	1261.5	259.2	1188.2	273.79
3:15	1261.5	246.6	1275.7	265.9	15:15	1261.5	259.6	1190.3	274.27
3:30	1261.5	248	1273.0	257.1	15:30	1261.5	257.3	1187.3	274.94
3:45	1261.5	248.2	1276.1	264.3	15:45	1261.5	256.5	1188.7	272.30
4:00	1261.5	248.4	1270.8	254.9	16:00	1261.5	256.6	1191.1	274.20
4:15	1261.5	250.6	1268.8	257.6	16:15	1261.5	255.5	1187.3	281.59
4:30	1261.5	249.7	1271.8	242.1	16:30	1261.5	259.2	1189.0	277.45
4:45	1261.5	250.9	1241.5	254.7	16:45	1261.5	256.6	1189.5	276.52
5:00	1261.5	250.6	1239.5	266.5	17:00	1261.5	258.3	1191.2	287.81
5:15	1261.5	256.4	1240.6	270.0	17:15	1261.5	256.2	1184.4	292.61
5:30	1261.5	258.9	1243.6	275.0	17:30	1261.5	237.1	1184.7	294.65
6:45	1261.5	268.2	1239.3	285.5	17:45	1261.5	262.8	1188.0	310.34
6:00	1261.5	275.6	1242.1	290.8	18:00	1261.5	255.2	1185.9	321.83
6:15	1261.5	282.5	1241.0	300.4	18:15	1261.5	273.5	1185.8	332.88
6:30	1261.5	285.9	1236.5	313.9	18:30	1261.5	287.3	1182.4	333.02
6:45	1261.5	289.6	1236.3	314.7	18:45	1261.5	293.9	1182.7	330.20
7:00	1261.5	288.9	1238.4	305.2	19:00	1261.5	299.9	1182.2	320.78
7:15	1261.5	287.7	1235.3	289.6	19:15	1261.5	299.3	1182.3	312.09
7:30	1261.5	282.3	1236.3	285.7	19:30	1261.5	298.6	1182.0	312.62
7:45	1261.5	275.8	1235.6	272.0	19:45	1261.5	297.4	1180.5	307.89
8:00	1261.5	273.4	1237.5	275.6	20:00	1261.5	293.5	1176.1	305.38
8:15	1261.5	273.4	1237.3	273.5	20:15	1261.5	291.7	1174.4	302.07
8:30	1261.5	273.3	1236.6	272.8	20:30	1261.5	289.7	1173.3	297.40
8:45	1261.5	271.4	1235.0	270.3	20:45	1261.5	286.9	1167.2	293.63
9:00	1261.5	266.1	1224.8	268.7	21:00	1261.5	283	1164.3	282.84
9:15	1261.5	266.5	1220.3	259.9	21:15	1261.5	281.4	1166.9	280.59
9:30	1261.5	265	1218.4	263.9	21:30	1261.5	279.3	1167.9	279.45
9:45	1261.5	263.1	1218.2	266.1	21:45	1261.5	277.2	1165.6	274.62
10:00	1261.5	264.7	1221.3	261.2	22:00	1261.5	272.4	1159.7	271.57
10:15	1261.5	263.3	1219.5	264.0	22:15	1261.5	266.4	1141.7	262.29
10:30	1261.5	261.8	1216.4	257.4	22:30	1261.5	263.5	1144.2	269.06
10:45	1261.5	259.8	1222.2	258.0	22:45	1261.5	261	1145.2	266.10
11:00	1261.5	262.4	1219.7	271.3	23:00	1261.5	258.3	1144.2	261.74
11:15	1261.5	264.3	1219.5	279.8	23:15	1261.5	255.7	1143.9	264.43
11:30	1261.5	265.8	1220.0	284.3	23:30	1211.1	256.1	1141.3	264.23
11:45	1261.5	263.5	1216.3	283.7	23:45	1211.1	248.3	1142.0	260.81

Yours faithfully,

Sign: Phub Zam

Coincidental peak load of Day(Last year):	
251.76	9-Oct-16
Maximum Load till date:	
344.02 MW	18-Mar-17



འབྲུག་རྒྱལ་ཁོ་ལས་འཛིན།

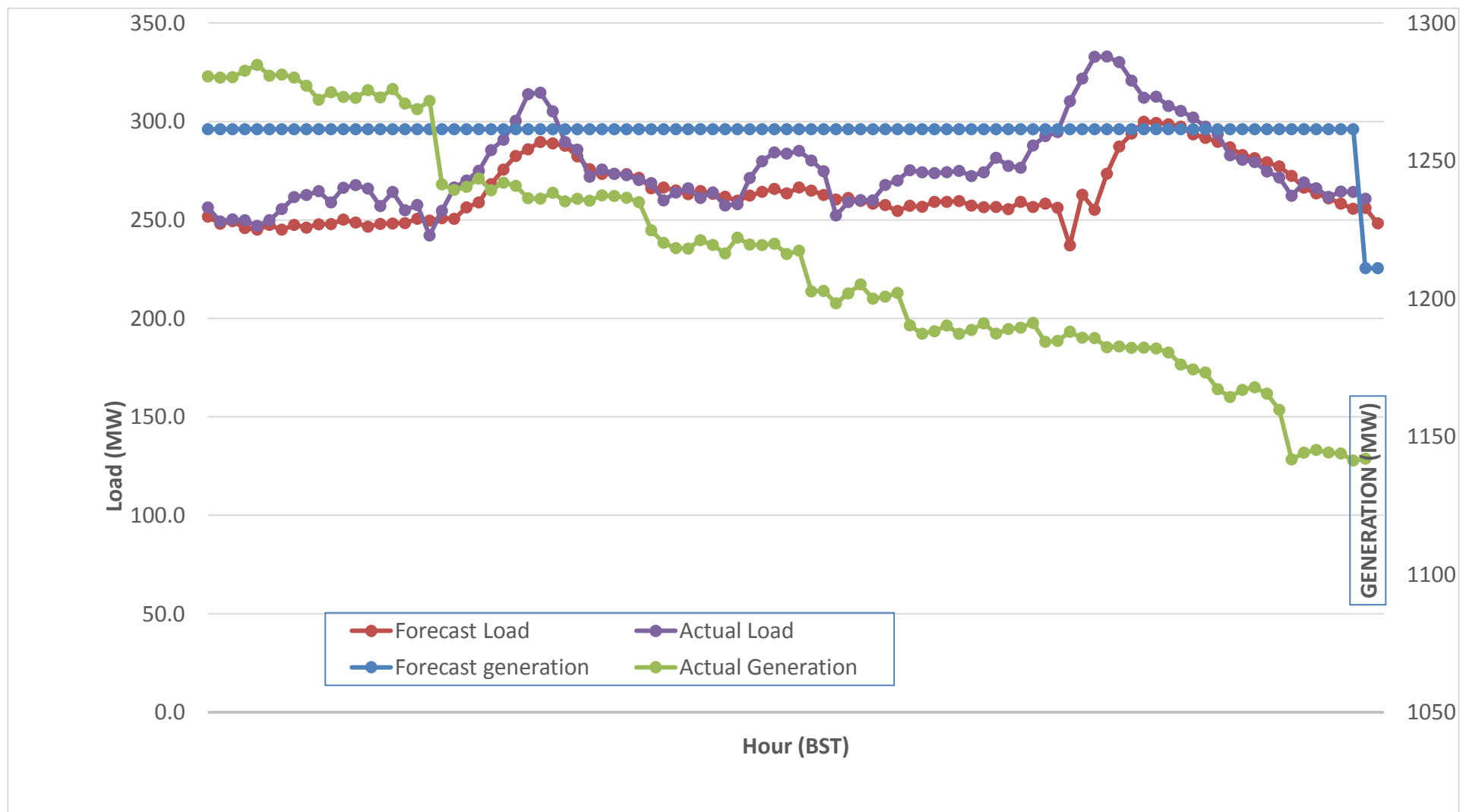
Bhutan Power Corporation Ltd.
 Bhutan Power System Operator
 Thimphu: Bhutan



Message No.: Enter your message number
 From: Shift In-charge, Control Room

Date: 10-Oct-17
 Time: 10:54

Forecast Generation & Load with Actual Generation & Load (09-Oct-2017).



Yours faithfully,

Sign: Phub Zam

	MW	Coincidental peak load of Day(Last year):	
Peak Co-incident Generation(09-Oct-2017).	1284.84	251.76	9-Oct-16
Peak Co-incident Load(09-Oct-2017).	333.02	Maximum Load till date:	
		344.02 MW	18-Mar-17

Telephone: +975-02335631; Fax: +975-02335632; Email: bhutansystemoperator@bpc.bt; www.bpc.bt



འབྲུག་གློག་ལེ་ལས་འཛིན།

Bhutan Power Corporation Ltd.
Bhutan Power System Operator
Thimphu: Bhutan



Message No.: Enter your message number
From: Shift In-charge, Control Room

Date: 10-Oct-17
Time: 10:54

To

Managing Director, BPC. Email: gemtshering@bpc.bt
Director, O&MD, DGPC. Email: director.omid@drukgreen.com
General Manager, TD, BPC. Email: thinleygyeltshen@bpc.bt
General Manager, DCSD, BPC. Email: sandeprai@bpc.bt
General Manager, BPSO, BPC. Email: ujjwaldahal@bpc.bt

Sub:

Load Generation Balance Report of Today (10-Oct-2017).

Hours (BST)	Forecast		Actual	
	Generation	Load	Generation	Load
0:00	1278.6	246.6	1143.3	246.29
0:15	1278.6	244.6	1141.3	245.29
0:30	1278.6	244.9	1141.7	245.42
0:45	1278.6	243.8	1137.8	250.08
1:00	1278.6	243	1143.7	253.54
1:15	1278.6	243.7	1141.4	256.73
1:30	1278.6	243.1	1142.8	249.51
1:45	1278.6	245.1	1141.9	262.31
2:00	1278.6	243.7	1144.0	255.61
2:15	1278.6	244.2	1142.5	260.11
2:30	1278.6	241	1140.0	256.66
2:45	1278.6	245.1	1141.9	258.95
3:00	1278.6	244.2	1140.0	262.70
3:15	1278.6	242.6	1143.5	252.91
3:30	1278.6	244.8	1143.4	255.04
3:45	1278.6	244.9	1139.4	243.77
4:00	1278.6	246.5	1141.8	257.15
4:15	1278.6	247.3	1144.5	256.72
4:30	1278.6	247	1139.6	254.62
4:45	1278.6	247.8	1143.7	261.56
5:00	1278.6	247.9	1143.7	261.77
5:15	1278.6	251.9	1139.3	264.40
5:30	1278.6	252.3	1142.8	269.66
5:45	1278.6	261.9	1145.6	271.75
6:00	1278.6	269.7	1140.6	285.70
6:15	1278.6	277	1142.8	298.59
6:30	1278.6	281.5	1106.1	291.71
6:45	1278.6	283.9	1102.8	307.34
7:00	1278.6	282.5	1101.0	301.29
7:15	1278.6	283.2	1101.3	294.55
7:30	1278.6	279.3	1099.1	295.02
7:45	1278.6	273.1	1099.3	294.64
8:00	1278.6	269.9	1105.9	287.66
8:15	1278.6	270.5	1105.2	281.36
8:30	1278.6	270.4	1101.0	266.38
8:45	1278.6	269.7	1104.5	281.70
9:00	1278.6	264.8	1104.9	284.02

Coincidental peak load of Day(Last year):	
241.63	10-Oct-17
Maximum Load till date:	
344.02 MW	18-Mar-17

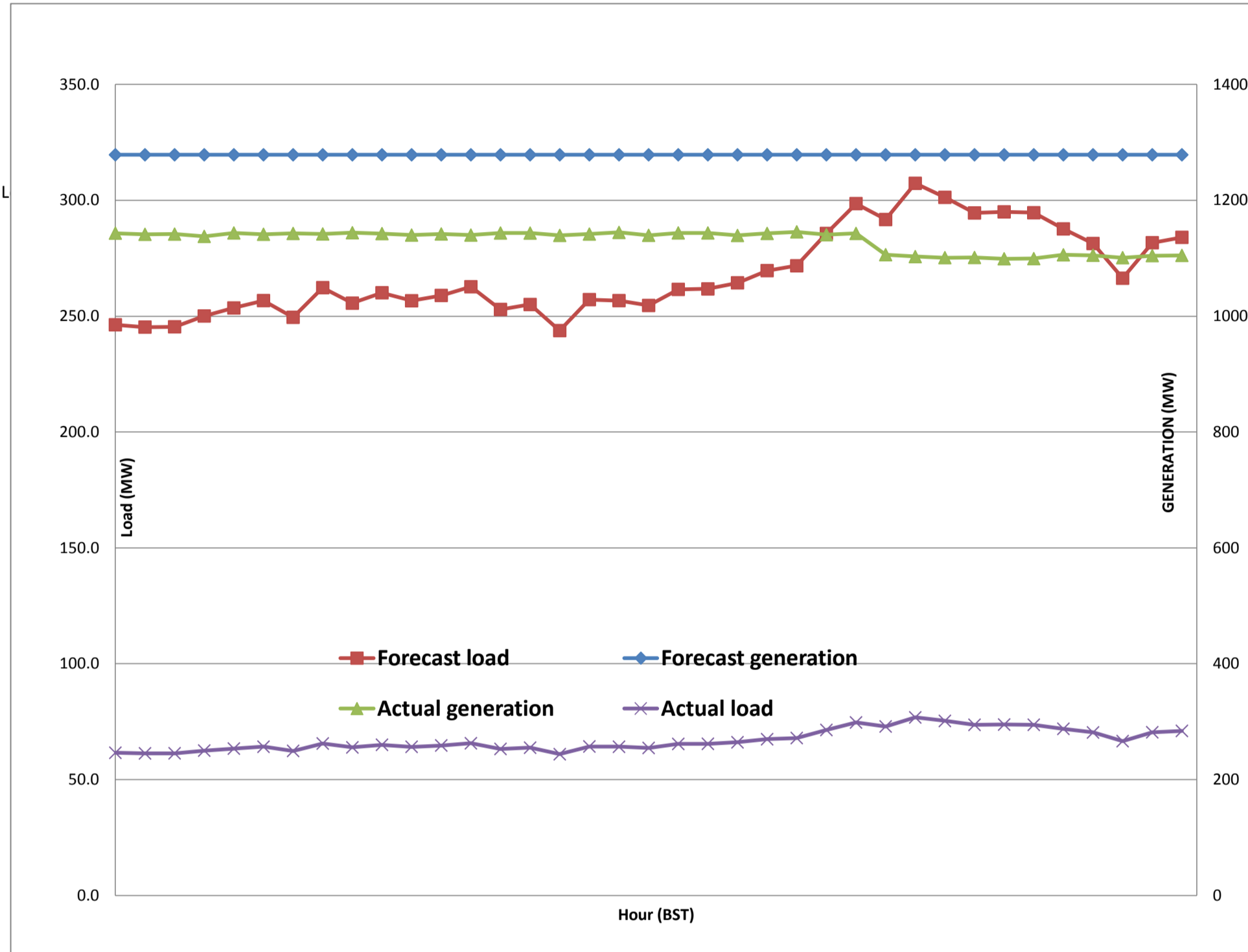
Yours faithfully,
Sign:Phub Zam



Message No.: Enter your message number
 From: Shift In-charge, Control Room

10/1/2017 12:50 10-Oct-17
 10/1/2017 12:50 10:54

Forecast Generation & Load with Actual Generation & Load of Today from 00:00hrs to 09:00hrs(10-Oct-2017).





འབྲུག་གྲོགས་ཚེལ་སྐུ་ལྷན་ཁག།
Bhutan Power Corporation Ltd.
Bhutan Power System Operator
 Thimphu: Bhutan



Message No.: Enter your message number
From: Shift In-charge, Control Room
Date: 10-Oct-17
Time: 10:54

To:
 Managing Director, BPC. Email: gemtshering@bpc.bt
 Director, O&MD, DGPC. Email: director.umd@drukgreen.com
 General Manager, TD, BPC. Email: ktobgye@bpc.bt
 General Manager, BPSO, BPC. Email: ujjwaldahal@bpc.bt
 Advisor, BPC. Email: bharattamang@bpc.bt

Sub: Load Generation Balance Report of Tomorrow (11-Oct-2017).

 ###

Hours (BST)	Forecast		Hours (BST)	Forecast	
	Generation	Load		Generation	Load
0:00	1182.4	249.40	12:00	1182.4	271.2
0:15	1182.4	247.70	12:15	1182.4	272.5
0:30	1182.4	245.80	12:30	1182.4	269.7
0:45	1182.4	244.60	12:45	1182.4	265.8
1:00	1182.4	245.40	13:00	1182.4	264
1:15	1182.4	246.50	13:15	1182.4	262.3
1:30	1182.4	248.20	13:30	1182.4	261.9
1:45	1182.4	249.70	13:45	1182.4	260.5
2:00	1182.4	248.40	14:00	1182.4	261
2:15	1182.4	250.30	14:15	1182.4	264.4
2:30	1182.4	246.80	14:30	1182.4	263.9
2:45	1182.4	250.10	14:45	1182.4	265.3
3:00	1182.4	250.50	15:00	1182.4	266.6
3:15	1182.4	249.50	15:15	1182.4	268.1
3:30	1182.4	250.30	15:30	1182.4	266.6
3:45	1182.4	250.40	15:45	1182.4	266.6
4:00	1182.4	250.70	16:00	1182.4	267.2
4:15	1182.4	249.90	16:15	1182.4	266.9
4:30	1182.4	246.30	16:30	1182.4	271.4
4:45	1182.4	251.90	16:45	1182.4	266.7
5:00	1182.4	253.80	17:00	1182.4	273.9
5:15	1182.4	257.40	17:15	1182.4	274.7
5:30	1182.4	259.20	17:30	1182.4	265
6:45	1182.4	268.60	17:45	1182.4	286.9
6:00	1182.4	276.20	18:00	1182.4	285.2
6:15	1182.4	285.60	18:15	1182.4	300.1
6:30	1182.4	290.50	18:30	1182.4	308.4
6:45	1182.4	292.00	18:45	1182.4	309.8
7:00	1182.4	288.00	19:00	1182.4	312.4
7:15	1182.4	285.00	19:15	1182.4	309.4
7:30	1182.4	281.20	19:30	1182.4	307.7
7:45	1182.4	272.20	19:45	1182.4	304.6
8:00	1182.4	271.60	20:00	1182.4	300.7
8:15	1182.4	271.60	20:15	1182.4	297.7
8:30	1182.4	272.20	20:30	1182.4	294.1
8:45	1182.4	270.90	20:45	1182.4	290.5
9:00	1182.4	266.80	21:00	1182.4	285
9:15	1182.4	265.40	21:15	1182.4	285
9:30	1182.4	266.20	21:30	1182.4	281.9
9:45	1182.4	264.00	21:45	1182.4	278.8
10:00	1182.4	264.60	22:00	1182.4	275.4
10:15	1182.4	263.20	22:15	1182.4	268
10:30	1182.4	263.10	22:30	1182.4	267.8
10:45	1182.4	261.10	22:45	1182.4	267.4
11:00	1182.4	265.40	23:00	1182.4	264.4
11:15	1182.4	269.10	23:15	1182.4	262.7
11:30	1182.4	271.90	23:30	1182.4	260.5
11:45	1182.4	268.90	23:45	1182.4	253.9

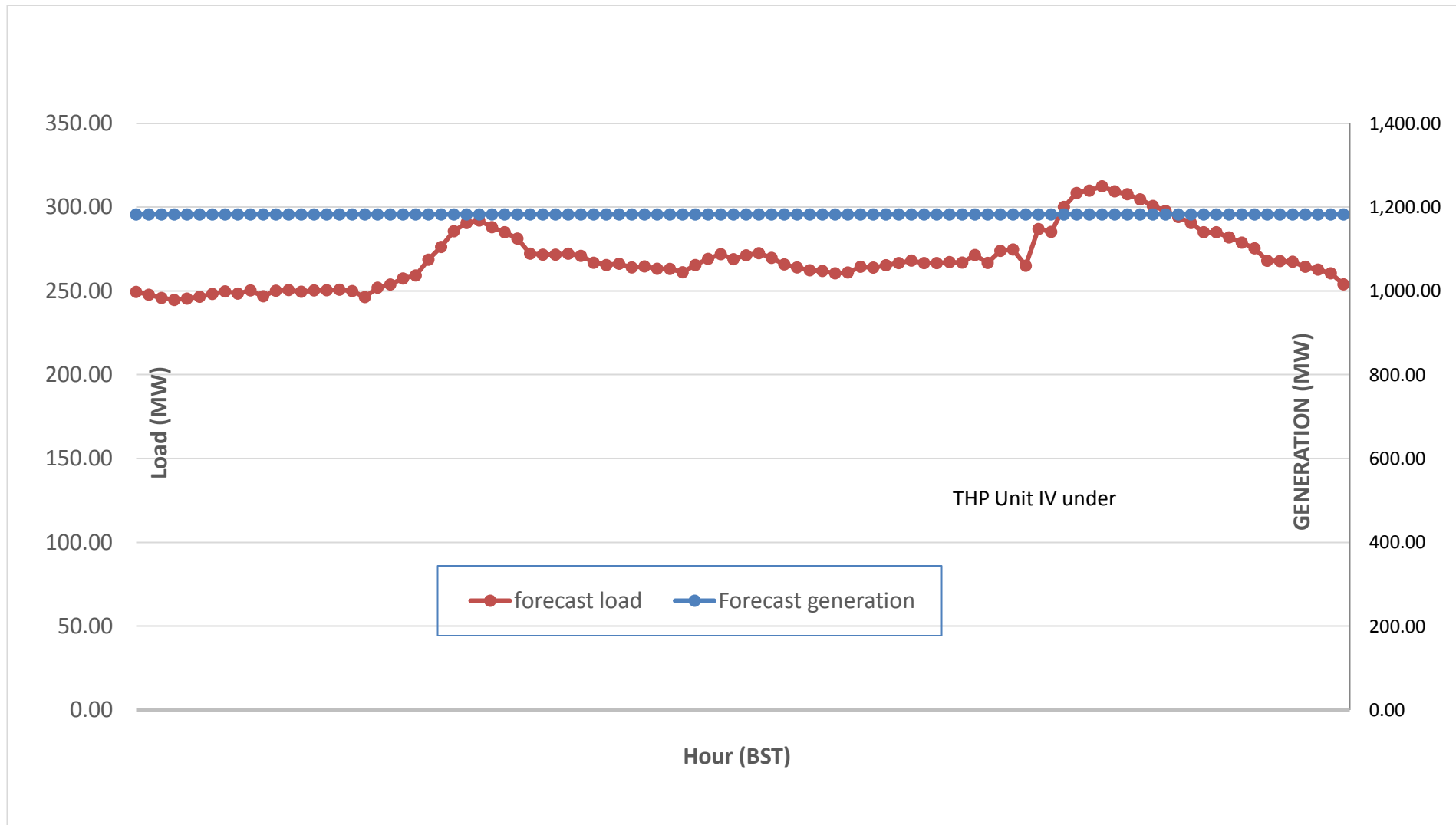
Yours faithfully,
 Sign:Phub Zam



Message No.: Enter your message number
 From: Shift In-charge, Control Room

Date: 10-Oct-17
 Time: 10:54

Scheduled Generation & Load Forecast for Tomorrow (11-Oct-2017).



Yours faithfully,

Sign: Phub Zam

	MW
Scheduled Peak Generation(11-Oct-2017).	376.90
Forecast Peak Load(11-Oct-2017).	300.60