



ཕྱག་ལུགས་ལེ་ལས་འཛིན།

Bhutan Power Corporation Ltd.
Bhutan Power System Operator
Thimphu: Bhutan



Message No.: Enter your message number
From: Shift In-charge, Control Room

Date: 9-Oct-17
Time: 10:48

To
Managing Director, BPC. Email: gemtshering@bpc.bt
Director, O&MD, DGPC. Email: director.omb@drukgreen.com
General Manager, TD, BPC. Email: ktobgye@bpc.bt
General Manager, DCSD, BPC. Email: sandeeprai@bpc.bt
General Manager, BPSO, BPC. Email: ujjwaldahal@bpc.bt

Sub: Load Generation Balance Report of Yesterday (08-Oct-2017).

Hours (BST)	Forecast		Actual		Hours (BST)	Forecast		Actual	
	Generation	Load	Generation	Load		Generation	Load	Generation	Load
0:00	1292.9	254.5	1242.0	234.0	12:00	1292.9	261.5	1228.5	272.55
0:15	1292.9	251.1	1205.6	230.8	12:15	1292.9	259.9	1238.5	269.44
0:30	1292.9	250.5	1207.0	233.8	12:30	1292.9	260.4	1237.8	272.98
0:45	1292.9	246.3	1202.2	232.8	12:45	1292.9	257.7	1238.3	266.86
1:00	1292.9	246.1	1201.4	236.2	13:00	1292.9	257	1240.0	268.75
1:15	1292.9	247.8	1201.5	230.1	13:15	1292.9	257.2	1268.9	260.88
1:30	1292.9	246.5	1199.6	234.9	13:30	1292.9	254	1271.1	273.27
1:45	1292.9	248.1	1200.2	235.3	13:45	1292.9	256.3	1269.9	262.28
2:00	1292.9	246.1	1199.8	233.3	14:00	1292.9	253.6	1268.3	268.93
2:15	1292.9	248.6	1197.8	230.2	14:15	1292.9	255.4	1271.4	269.05
2:30	1292.9	248.3	1197.0	214.5	14:30	1292.9	254.1	1287.3	269.47
2:45	1292.9	251.1	1196.3	225.8	14:45	1292.9	259	1293.2	270.89
3:00	1292.9	251.2	1197.8	225.3	15:00	1292.9	259.5	1294.8	272.18
3:15	1292.9	249.7	1200.6	231.0	15:15	1292.9	261.4	1293.7	274.96
3:30	1292.9	250.3	1197.3	231.9	15:30	1292.9	259.1	1295.8	274.32
3:45	1292.9	248.6	1195.6	231.7	15:45	1292.9	259.9	1295.9	276.23
4:00	1292.9	249.8	1195.9	237.0	16:00	1292.9	259.8	1296.8	271.29
4:15	1292.9	250.6	1194.6	238.5	16:15	1292.9	262.4	1294.0	274.66
4:30	1292.9	252.2	1194.7	235.7	16:30	1292.9	264.9	1297.1	272.96
4:45	1292.9	253.2	1194.3	238.2	16:45	1292.9	260.9	1298.3	286.73
5:00	1292.9	252.5	1194.7	236.5	17:00	1292.9	262.3	1300.3	289.06
5:15	1292.9	256.3	1194.4	235.7	17:15	1292.9	258.7	1300.8	295.34
5:30	1292.9	261.5	1190.9	229.5	17:30	1292.9	234.9	1298.9	299.55
6:45	1292.9	266.6	1191.2	242.7	17:45	1292.9	260.1	1304.0	312.24
6:00	1292.9	275	1189.4	248.2	18:00	1292.9	281.1	1300.6	312.38
6:15	1292.9	282.9	1190.8	259.5	18:15	1292.9	296	1303.6	313.08
6:30	1292.9	284.3	1190.4	262.1	18:30	1292.9	305.5	1306.3	328.59
6:45	1292.9	289.8	1190.1	259.9	18:45	1292.9	305.6	1305.8	326.13
7:00	1292.9	286.4	1189.7	263.0	19:00	1292.9	302.7	1308.6	323.62
7:15	1292.9	286	1186.0	260.1	19:15	1292.9	305.4	1298.6	321.92
7:30	1292.9	280	1181.4	265.3	19:30	1292.9	300.8	1301.3	320.63
7:45	1292.9	273.7	1181.5	263.1	19:45	1292.9	299	1299.9	315.66
8:00	1292.9	270.5	1182.6	255.0	20:00	1292.9	294.2	1297.9	311.52
8:15	1292.9	270.4	1209.2	262.7	20:15	1292.9	293.1	1298.3	302.55
8:30	1292.9	271.7	1217.3	264.5	20:30	1292.9	289.3	1296.8	300.64
8:45	1292.9	267.9	1217.9	257.4	20:45	1292.9	287.6	1388.4	296.24
9:00	1292.9	263.4	1218.8	258.1	21:00	1292.9	281.6	1392.6	292.07
9:15	1292.9	261.6	1221.7	258.9	21:15	1292.9	280.1	1338.2	291.90
9:30	1292.9	262.7	1221.4	266.3	21:30	1292.9	278.4	1335.9	287.04
9:45	1292.9	260.2	1219.6	256.5	21:45	1292.9	276.4	1340.3	280.86
10:00	1292.9	263.7	1217.8	259.2	22:00	1292.9	269.9	1341.1	280.62
10:15	1292.9	262.1	1221.3	256.3	22:15	1292.9	264.9	1343.5	272.47
10:30	1292.9	262	1222.3	260.2	22:30	1292.9	264.3	1341.8	270.13
10:45	1292.9	258.9	1221.8	255.3	22:45	1292.9	260.9	1345.8	275.86
11:00	1292.9	259.1	1221.7	255.2	23:00	1292.9	258.7	1345.5	269.53
11:15	1292.9	261.8	1225.6	256.4	23:15	1292.9	256.3	1345.4	271.48
11:30	1292.9	262	1227.1	266.9	23:30	1292.9	257.3	1283.0	262.62
11:45	1292.9	261.4	1227.8	268.9	23:45	1292.9	251.3	1281.7	261.95

Yours faithfully,
Sign: Kinley Wangmo

Coincidental peak load of Day(Last year):	
259.02 MW	8-Oct-16
Maximum Load till date:	
344.02 MW	18-Mar-17



འབྲུག་རྒྱལ་ཁོ་ལས་འཛིན།

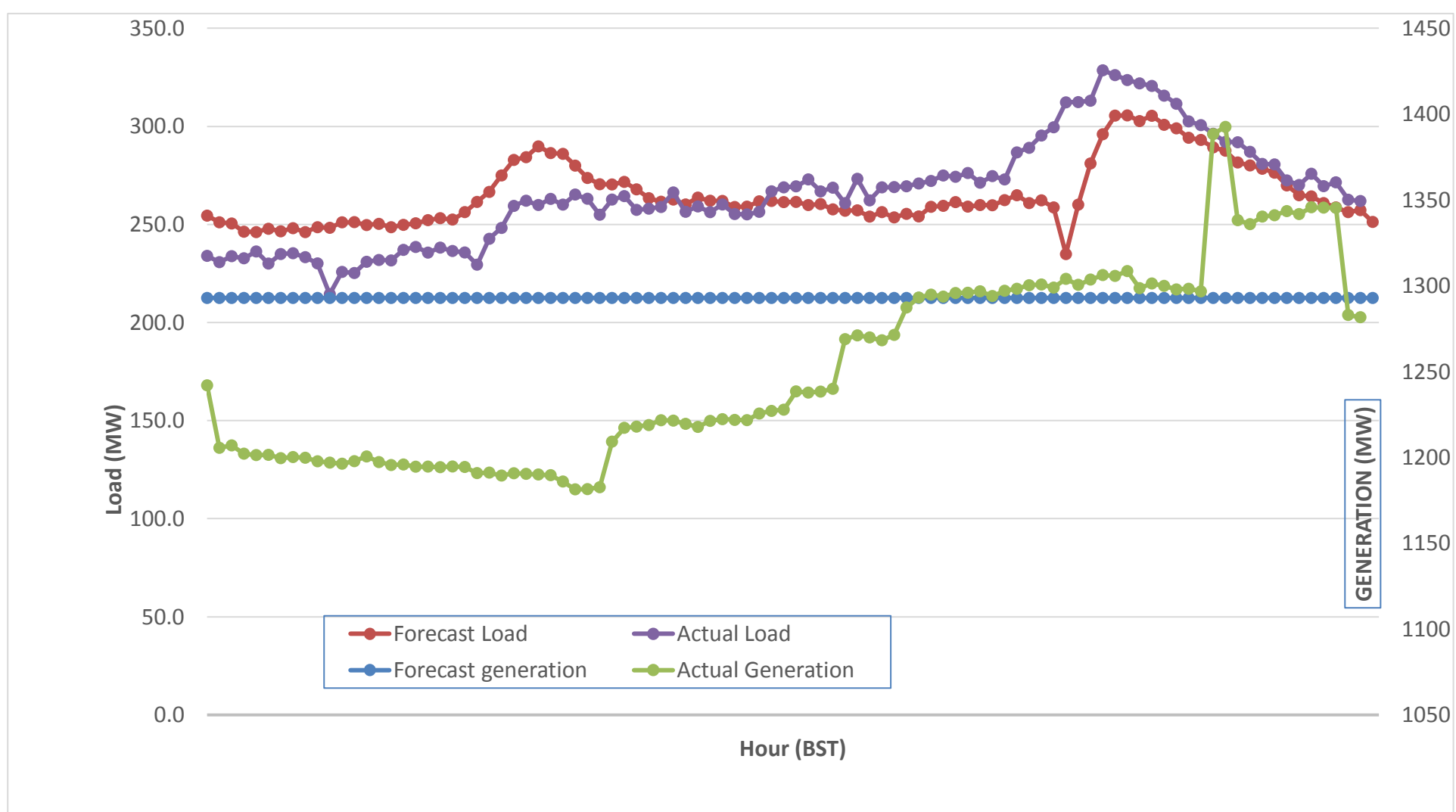
Bhutan Power Corporation Ltd.
 Bhutan Power System Operator
 Thimphu: Bhutan



Message No.: Enter your message number
 From: Shift In-charge, Control Room

Date: 9-Oct-17
 Time: 10:48

Forecast Generation & Load with Actual Generation & Load (08-Oct-2017).



Yours faithfully,
 Sign: Kinley Wangr

	MW
Peak Co-incident Generation(08-Oct-2017).	1392.56
Peak Co-incident Load(08-Oct-2017).	328.59

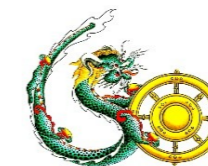
Coincidental peak load of Day(Last year):	
259.02 MW	8-Oct-16
Maximum Load till date:	
344.02 MW	18-Mar-17

Telephone: +975-02335631; Fax: +975-02335632; Email: bhutansystemoperator@bpc.bt; www.bpc.bt



འབྲུག་གླིང་མི་ལམ་འཛིན།

Bhutan Power Corporation Ltd.
Bhutan Power System Operator
Thimphu: Bhutan



Message No.: Enter your message number
From: Shift In-charge, Control Room

Date: 9-Oct-17
Time: 10:48

To

Managing Director, BPC. Email: gemtshering@bpc.bt
Director, O&MD, DGPC. Email: director.omid@drukgreen.com
General Manager, TD, BPC. Email: thinleygyeltshen@bpc.bt
General Manager, DCSD, BPC. Email: sandeprai@bpc.bt
General Manager, BPSO, BPC. Email: ujjwaldahal@bpc.bt

Sub:

Load Generation Balance Report of Today (09-Oct-2017).

Hours (BST)	Forecast		Actual	
	Generation	Load	Generation	Load
0:00	1261.5	251.7	1280.7	256.37
0:15	1261.5	248.1	1280.2	249.24
0:30	1261.5	249.4	1280.4	250.32
0:45	1261.5	245.9	1282.7	249.86
1:00	1261.5	245.1	1284.8	246.96
1:15	1261.5	247.5	1280.9	249.91
1:30	1261.5	245.1	1281.3	255.55
1:45	1261.5	247.5	1280.3	261.63
2:00	1261.5	246.1	1277.3	262.69
2:15	1261.5	247.8	1272.2	264.65
2:30	1261.5	247.9	1274.9	258.93
2:45	1261.5	250.2	1273.2	266.35
3:00	1261.5	248.7	1272.9	267.72
3:15	1261.5	246.6	1275.7	265.94
3:30	1261.5	248	1273.0	257.09
3:45	1261.5	248.2	1276.1	264.26
4:00	1261.5	248.4	1270.8	254.94
4:15	1261.5	250.6	1268.8	257.63
4:30	1261.5	249.7	1271.8	242.14
4:45	1261.5	250.9	1241.5	254.66
5:00	1261.5	250.6	1239.5	266.51
5:15	1261.5	256.4	1240.6	270.04
5:30	1261.5	258.9	1243.6	275.00
5:45	1261.5	268.2	1239.3	285.48
6:00	1261.5	275.6	1242.1	290.76
6:15	1261.5	282.5	1241.0	300.40
6:30	1261.5	285.9	1236.5	313.89
6:45	1261.5	289.6	1236.3	314.66
7:00	1261.5	288.9	1238.4	305.19
7:15	1261.5	287.7	1235.3	289.61
7:30	1261.5	282.3	1236.3	285.73
7:45	1261.5	275.8	1235.6	271.96
8:00	1261.5	273.4	1237.5	275.63
8:15	1261.5	273.4	1237.3	273.48
8:30	1261.5	273.3	1236.6	272.77
8:45	1261.5	271.4	1235.0	270.30
9:00	1261.5	266.1	1224.8	268.72

Coincidental peak load of Day(Last year):	
244.31	9-Oct-17
Maximum Load till date:	
344.02 MW	18-Mar-17

Yours faithfully,

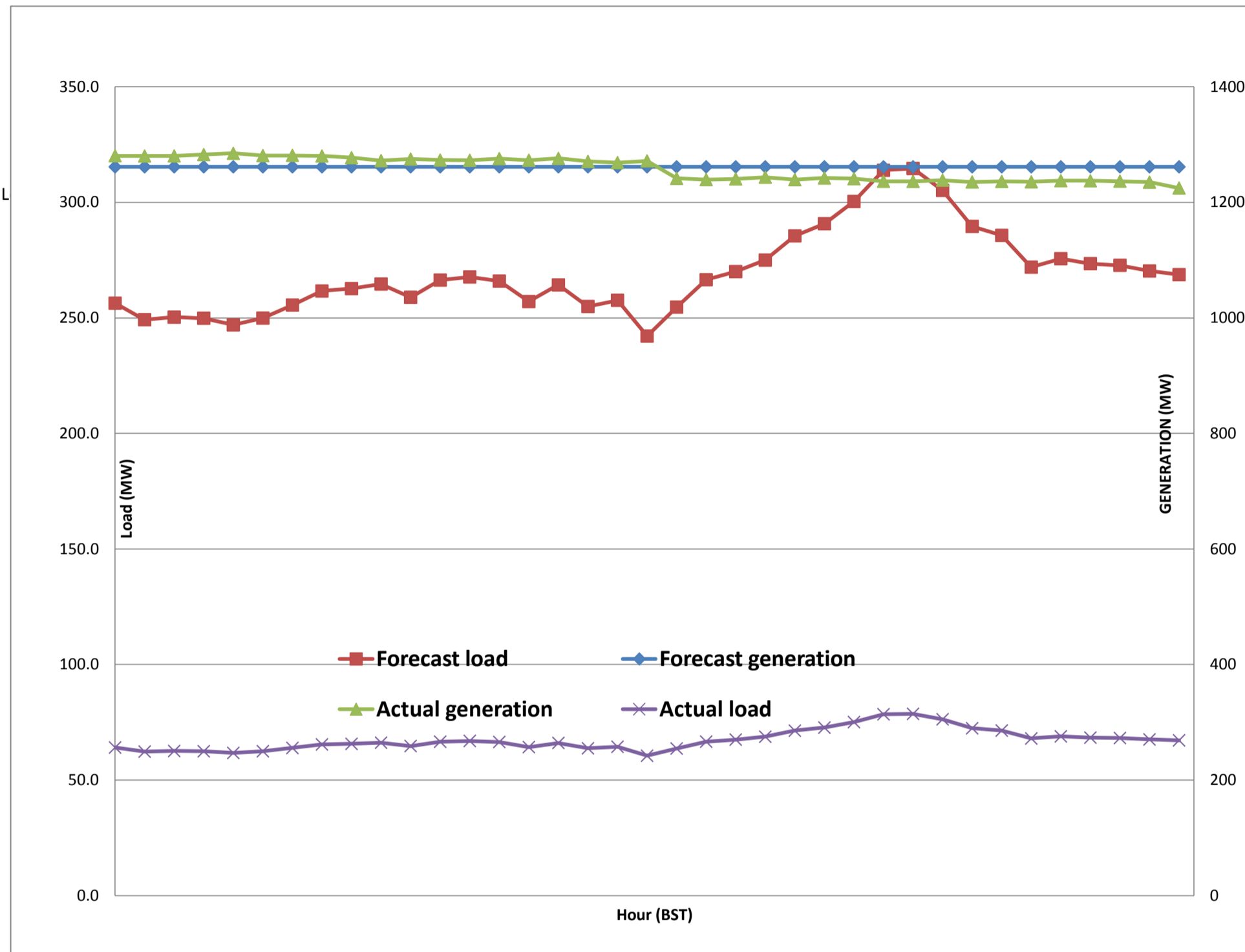
Sign:Kinley Wangmo



Message No.: Enter your message number
 From: Shift In-charge, Control Room

10/1/2017 12:50 9-Oct-17
 10/1/2017 12:50 10:48

Forecast Generation & Load with Actual Generation & Load of Today from 00:00hrs to 09:00hrs(09-Oct-2017).





འབྲུག་གྲོགས་ལས་ཁུངས་།
Bhutan Power Corporation Ltd.
Bhutan Power System Operator
 Thimphu: Bhutan



Message No.: Enter your message number
From: Shift In-charge, Control Room
Date: 9-Oct-17
Time: 10:48
To: Managing Director, BPC. Email: gemtshering@bpc.bt
 Director, O&MD, DGPC. Email: director.umd@drukgreen.com
 General Manager, TD, BPC. Email: ktobgye@bpc.bt
 General Manager, BPSO, BPC. Email: ujjwaldahal@bpc.bt
 Advisor, BPC. Email: bharattamang@bpc.bt
Sub: Load Generation Balance Report of Tomorrow (10-Oct-2017).

 ###

Hours (BST)	Forecast		Hours (BST)	Forecast	
	Generation	Load		Generation	Load
0:00	1278.6	246.60	12:00	1278.6	267.6
0:15	1278.6	244.60	12:15	1278.6	267.3
0:30	1278.6	244.90	12:30	1278.6	266.1
0:45	1278.6	243.80	12:45	1278.6	263.1
1:00	1278.6	243.00	13:00	1278.6	264.2
1:15	1278.6	243.70	13:15	1278.6	260.7
1:30	1278.6	243.10	13:30	1278.6	261
1:45	1278.6	245.10	13:45	1278.6	258.4
2:00	1278.6	243.70	14:00	1278.6	257.6
2:15	1278.6	244.20	14:15	1278.6	260.6
2:30	1278.6	241.00	14:30	1278.6	259.4
2:45	1278.6	245.10	14:45	1278.6	261.5
3:00	1278.6	244.20	15:00	1278.6	262.6
3:15	1278.6	242.60	15:15	1278.6	264.3
3:30	1278.6	244.80	15:30	1278.6	261.7
3:45	1278.6	244.90	15:45	1278.6	262.2
4:00	1278.6	246.50	16:00	1278.6	261.5
4:15	1278.6	247.30	16:15	1278.6	260.3
4:30	1278.6	247.00	16:30	1278.6	265.4
4:45	1278.6	247.80	16:45	1278.6	262.3
5:00	1278.6	247.90	17:00	1278.6	267.4
5:15	1278.6	251.90	17:15	1278.6	267.7
5:30	1278.6	252.30	17:30	1278.6	254
6:45	1278.6	261.90	17:45	1278.6	277.1
6:00	1278.6	269.70	18:00	1278.6	271.6
6:15	1278.6	277.00	18:15	1278.6	287.3
6:30	1278.6	281.50	18:30	1278.6	300.1
6:45	1278.6	283.90	18:45	1278.6	302.6
7:00	1278.6	282.50	19:00	1278.6	307.3
7:15	1278.6	283.20	19:15	1278.6	304.5
7:30	1278.6	279.30	19:30	1278.6	304.3
7:45	1278.6	273.10	19:45	1278.6	302.9
8:00	1278.6	269.90	20:00	1278.6	297.9
8:15	1278.6	270.50	20:15	1278.6	294.7
8:30	1278.6	270.40	20:30	1278.6	292.5
8:45	1278.6	269.70	20:45	1278.6	289.9
9:00	1278.6	264.80	21:00	1278.6	286.3
9:15	1278.6	265.30	21:15	1278.6	284.5
9:30	1278.6	265.20	21:30	1278.6	281.6
9:45	1278.6	262.20	21:45	1278.6	278.8
10:00	1278.6	264.00	22:00	1278.6	275
10:15	1278.6	262.30	22:15	1278.6	268.8
10:30	1278.6	262.20	22:30	1278.6	265.8
10:45	1278.6	260.10	22:45	1278.6	265.3
11:00	1278.6	261.70	23:00	1278.6	262.2
11:15	1278.6	264.10	23:15	1278.6	259.7
11:30	1278.6	267.30	23:30	1278.6	258.6
11:45	1278.6	263.90	23:45	1278.6	252

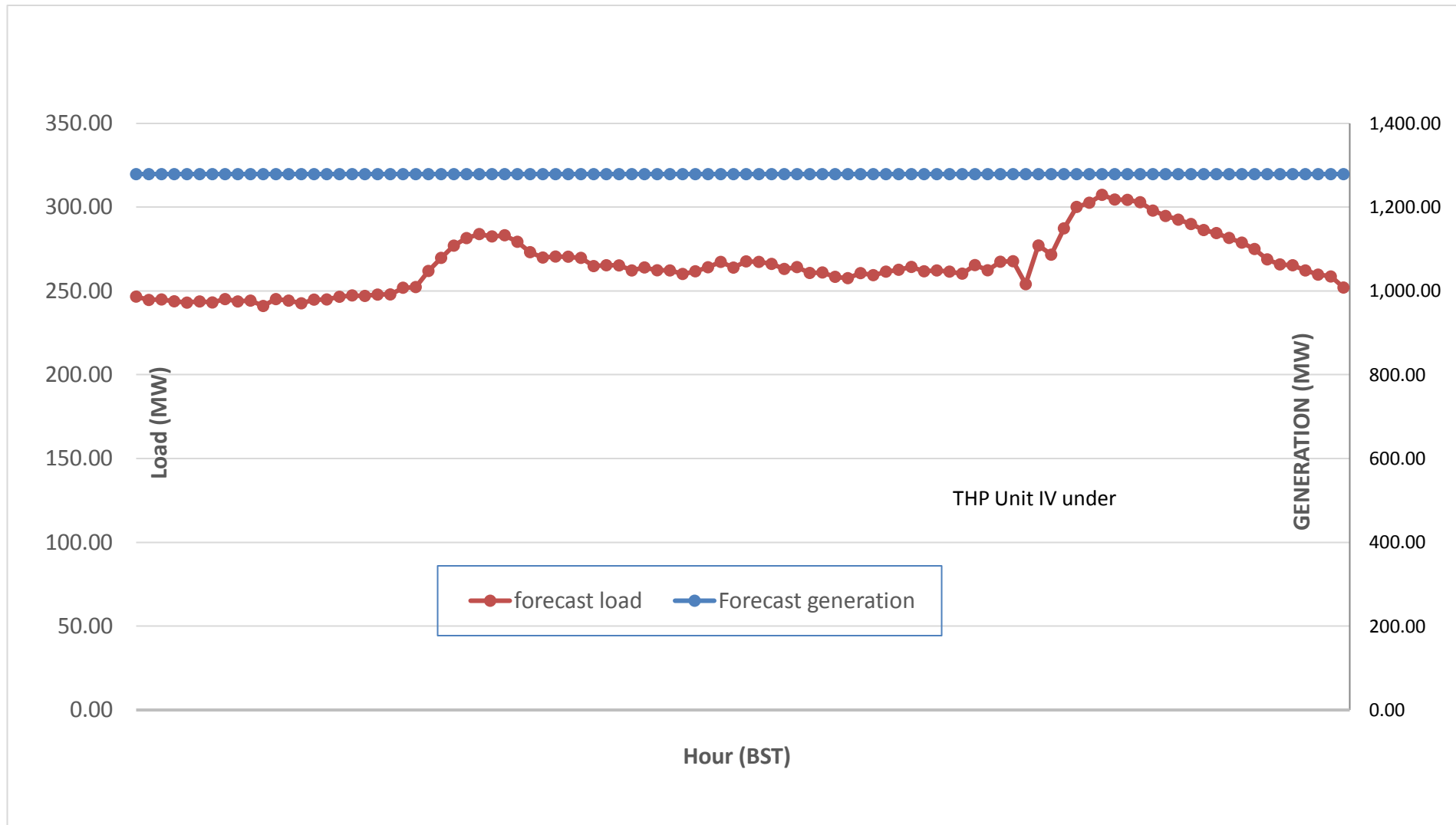
Yours faithfully,
 Sign: Kinley Wangmo



Message No.: Enter your message number
 From: Shift In-charge, Control Room

Date: 9-Oct-17
 Time: 10:48

Scheduled Generation & Load Forecast for Tomorrow (10-Oct-2017).



Yours faithfully,
 Sign: Kinley War

	MW
Scheduled Peak Generation(10-Oct-2017).	376.90
Forecast Peak Load(10-Oct-2017).	300.60