



འབྲུག་གྲོག་མེ་ལས་འཛིན།

Bhutan Power Corporation Ltd.
Bhutan Power System Operator
Thimphu: Bhutan



Message No.: Enter your message number
From: Shift In-charge, Control Room

Date: 5-Oct-17
Time: 10:53

To
Managing Director, BPC. Email: gemtshering@bpc.bt
Director, O&MD, DGPC. Email: director.umd@drukgreen.com
General Manager, TD, BPC. Email: ktobgye@bpc.bt
General Manager, DCSD, BPC. Email: sandeeprai@bpc.bt
General Manager, BPSO, BPC. Email: ujjwaldahal@bpc.bt

Sub: Load Generation Balance Report of Yesterday (04-Oct-2017).

Hours (BST)	Forecast		Actual		Hours (BST)	Forecast		Actual	
	Generation	Load	Generation	Load		Generation	Load	Generation	Load
0:00	1508.9	250.9	1412.0	247.4	12:00	1475.9	266.2	1371.9	243.83
0:15	1508.9	245.9	1403.4	248.3	12:15	1508.9	262.9	1365.0	253.02
0:30	1508.9	243.1	1401.9	246.1	12:30	1508.9	264.5	1363.1	250.58
0:45	1508.9	243.9	1408.9	244.3	12:45	1508.9	260.9	1364.7	248.83
1:00	1508.9	243.9	1413.1	240.7	13:00	1508.9	256.2	1362.4	243.57
1:15	1508.9	248.3	1408.8	242.7	13:15	1508.9	255.5	1436.1	244.81
1:30	1508.9	248.4	1405.6	239.4	13:30	1508.9	254.6	1434.7	239.71
1:45	1508.9	245.7	1411.5	241.2	13:45	1508.9	258	1449.9	235.99
2:00	1508.9	248.6	1406.9	235.6	14:00	1508.9	252.9	1447.8	236.29
2:15	1508.9	248.9	1409.1	235.2	14:15	1508.9	256	1451.8	237.41
2:30	1508.9	247.1	1402.5	242.7	14:30	1508.9	254.2	1447.3	237.58
2:45	1508.9	250	1401.1	245.4	14:45	1508.9	256.3	1443.9	236.91
3:00	1508.9	248.8	1409.2	245.6	15:00	1508.9	257.3	1451.6	241.55
3:15	1508.9	250.9	1407.0	245.7	15:15	1508.9	259.1	1450.7	236.89
3:30	1508.9	249.6	1403.5	240.2	15:30	1508.9	259.3	1453.2	234.68
3:45	1508.9	247	1407.6	243.1	15:45	1508.9	262.1	1454.5	244.26
4:00	1508.9	249.3	1401.9	243.2	16:00	1508.9	263.5	1447.9	238.64
4:15	1508.9	248.7	1407.5	245.0	16:15	1508.9	266.2	1454.9	239.45
4:30	1508.9	248.1	1405.1	246.0	16:30	1508.9	270	1453.9	244.00
4:45	1508.9	249.7	1411.7	249.4	16:45	1508.9	269.4	1457.4	248.34
5:00	1508.9	252.7	1403.4	247.2	17:00	1508.9	272.7	1452.2	253.65
5:15	1508.9	251.1	1389.4	249.4	17:15	1508.9	276.6	1451.6	250.60
5:30	1508.9	251.2	1386.5	257.4	17:30	1508.9	279.1	1450.1	247.94
6:45	1508.9	256.1	1388.8	266.5	17:45	1508.9	285.2	1452.6	273.87
6:00	1508.9	267.2	1380.8	274.2	18:00	1508.9	292.7	1452.1	281.38
6:15	1508.9	272.3	1386.8	285.4	18:15	1508.9	301.8	1455.2	286.69
6:30	1508.9	276	1382.7	291.3	18:30	1508.9	302.7	1452.3	304.45
6:45	1508.9	281.5	1391.0	292.2	18:45	1508.9	302.9	1450.3	305.70
7:00	1508.9	280.1	1379.5	277.5	19:00	1508.9	299	1451.5	309.73
7:15	1508.9	278.7	1387.0	287.3	19:15	1508.9	296	1348.9	315.52
7:30	1508.9	275.4	1380.2	282.7	19:30	1508.9	293.8	1354.2	309.79
7:45	1508.9	274.4	1388.2	278.0	19:45	1508.9	290.9	1351.3	304.22
8:00	1508.9	270.4	1379.9	268.2	20:00	1508.9	284.5	1349.0	303.78
8:15	1508.9	270.4	1377.7	270.9	20:15	1508.9	283.9	1350.1	296.10
8:30	1508.9	267.1	1380.2	266.3	20:30	1508.9	275.7	1380.7	297.95
8:45	1508.9	265.1	1382.4	269.1	20:45	1508.9	275.6	1380.3	293.52
9:00	1508.9	265.1	1383.5	256.2	21:00	1508.9	268.9	1379.9	284.48
9:15	1508.9	259.8	1382.9	255.1	21:15	1508.9	269.3	1382.7	282.60
9:30	1508.9	265.9	1381.9	259.7	21:30	1508.9	268.7	1380.3	285.34
9:45	1508.9	259.8	1387.1	255.4	21:45	1508.9	268.4	1381.8	275.52
10:00	1475.9	266.3	1385.2	264.4	22:00	1508.9	262.9	1380.9	272.35
10:15	1475.9	263.3	1347.2	258.1	22:15	1508.9	260.5	1383.3	260.63
10:30	1475.9	261.1	1348.4	251.6	22:30	1508.9	260.6	1381.1	262.17
10:45	1475.9	258.6	1345.1	250.3	22:45	1508.9	257.5	1379.6	257.03
11:00	1475.9	259.6	1344.3	253.2	23:00	1508.9	256.3	1381.8	257.41
11:15	1475.9	262.6	1348.7	251.7	23:15	1508.9	252.2	1379.3	257.21
11:30	1475.9	265.2	1345.6	254.0	23:30	1508.9	253.7	1377.6	256.83
11:45	1475.9	265.6	1351.0	258.3	23:45	1508.9	250.3	1379.5	252.28

Yours faithfully,

Sign:
Pema Lhamo

Coincidental peak load of Day(Last year):	
251.71	4-Oct-16
Maximum Load till date:	
344.02 MW	18-Mar-17



འབྲུག་རྒྱལ་ཁོ་ལས་འཛིན།

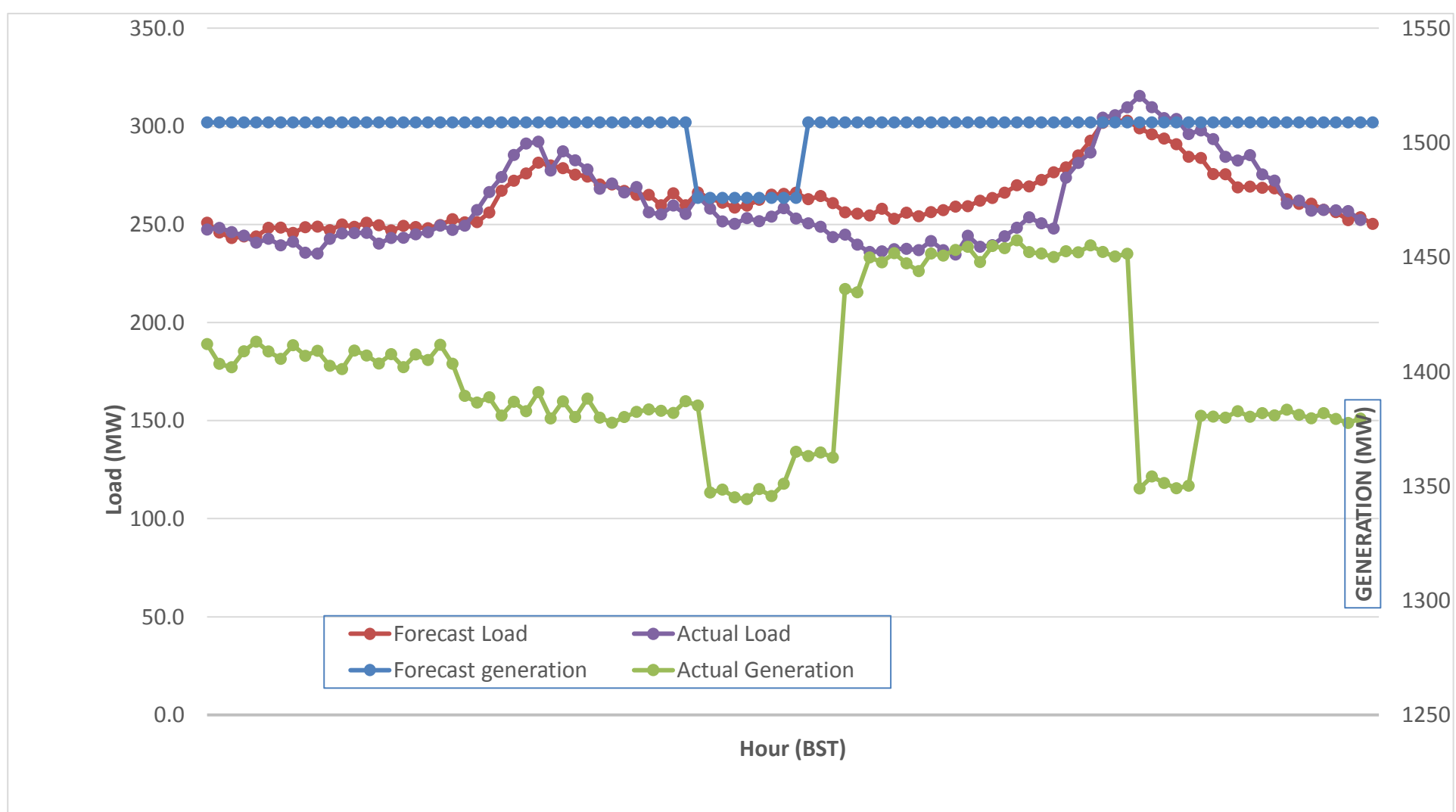
Bhutan Power Corporation Ltd.
 Bhutan Power System Operator
 Thimphu: Bhutan



Message No.: Enter your message number
 From: Shift In-charge, Control Room

Date: 5-Oct-17
 Time: 10:53

Forecast Generation & Load with Actual Generation & Load (04-Oct-2017).



Yours faithfully,

Sign:
Pema Lhamo

	MW
Peak Co-incident Generation(04-Oct-2017).	1457.38
Peak Co-incident Load(04-Oct-2017).	315.52

Coincidental peak load of Day(Last year):	
249.78	4-Oct-16
Maximum Load till date:	
344.02 MW	18-Mar-17

Telephone: +975-02335631; Fax: +975-02335632; Email: bhutansystemoperator@bpc.bt; www.bpc.bt



འབྲུག་གྲོག་མེ་ལས་འཛིན།

Bhutan Power Corporation Ltd.
Bhutan Power System Operator
Thimphu: Bhutan



Message No.: Enter your message number
From: Shift In-charge, Control Room

Date: 5-Oct-17
Time: 10:53

To

Managing Director, BPC. Email: gemtshering@bpc.bt
Director, O&MD, DGPC. Email: director.omid@drukgreen.com
General Manager, TD, BPC. Email: thinleygyeltshen@bpc.bt
General Manager, DCSD, BPC. Email: sandeprai@bpc.bt
General Manager, BPSO, BPC. Email: ujjwaldahal@bpc.bt

Sub:

Load Generation Balance Report of Today (05-Oct-2017).

Hours (BST)	Forecast		Actual	
	Generation	Load	Generation	Load
0:00	1381.1	225	1382.5	249.23
0:15	1381.1	225	1381.0	247.16
0:30	1381.1	224.5	1378.8	248.45
0:45	1381.1	224.3	1376.0	247.93
1:00	1381.1	224.7	1378.8	253.65
1:15	1381.1	231.5	1379.3	253.88
1:30	1381.1	230.9	1378.8	246.77
1:45	1381.1	232.3	1381.1	252.48
2:00	1381.1	232.3	1376.3	252.01
2:15	1381.1	229.8	1373.2	240.21
2:30	1381.1	231.4	1377.0	248.05
2:45	1381.1	231	1376.1	247.63
3:00	1381.1	231.5	1376.2	247.08
3:15	1381.1	229.9	1374.1	247.66
3:30	1381.1	223.4	1374.7	241.59
3:45	1381.1	221.9	1373.0	241.57
4:00	1381.1	223.3	1373.4	244.59
4:15	1381.1	221.8	1371.9	247.82
4:30	1381.1	223.1	1371.8	249.49
4:45	1381.1	222	1372.4	253.32
5:00	1381.1	223	1374.1	258.76
5:15	1381.1	223	1371.5	255.12
5:30	1381.1	224.1	1372.4	263.96
5:45	1381.1	225.7	1369.1	274.78
6:00	1381.1	226.3	1369.3	276.25
6:15	1381.1	231.3	1373.3	284.96
6:30	1381.1	230.8	1372.3	290.47
6:45	1381.1	234.6	1370.4	292.01
7:00	1381.1	234.4	1372.0	289.02
7:15	1381.1	233.8	1368.1	289.55
7:30	1381.1	233.1	1370.3	280.89
7:45	1381.1	233	1342.7	272.25
8:00	1381.1	233.1	1347.3	273.03
8:15	1381.1	233.1	1352.1	270.99
8:30	1381.1	233.5	1343.1	268.65
8:45	1381.1	233.1	1347.5	326.09
9:00	1381.1	233	1293.6	259.67

Coincidental peak load of Day(Last year):	
265.13	5-Oct-17
Maximum Load till date:	
344.02 MW	18-Mar-17

Yours faithfully,

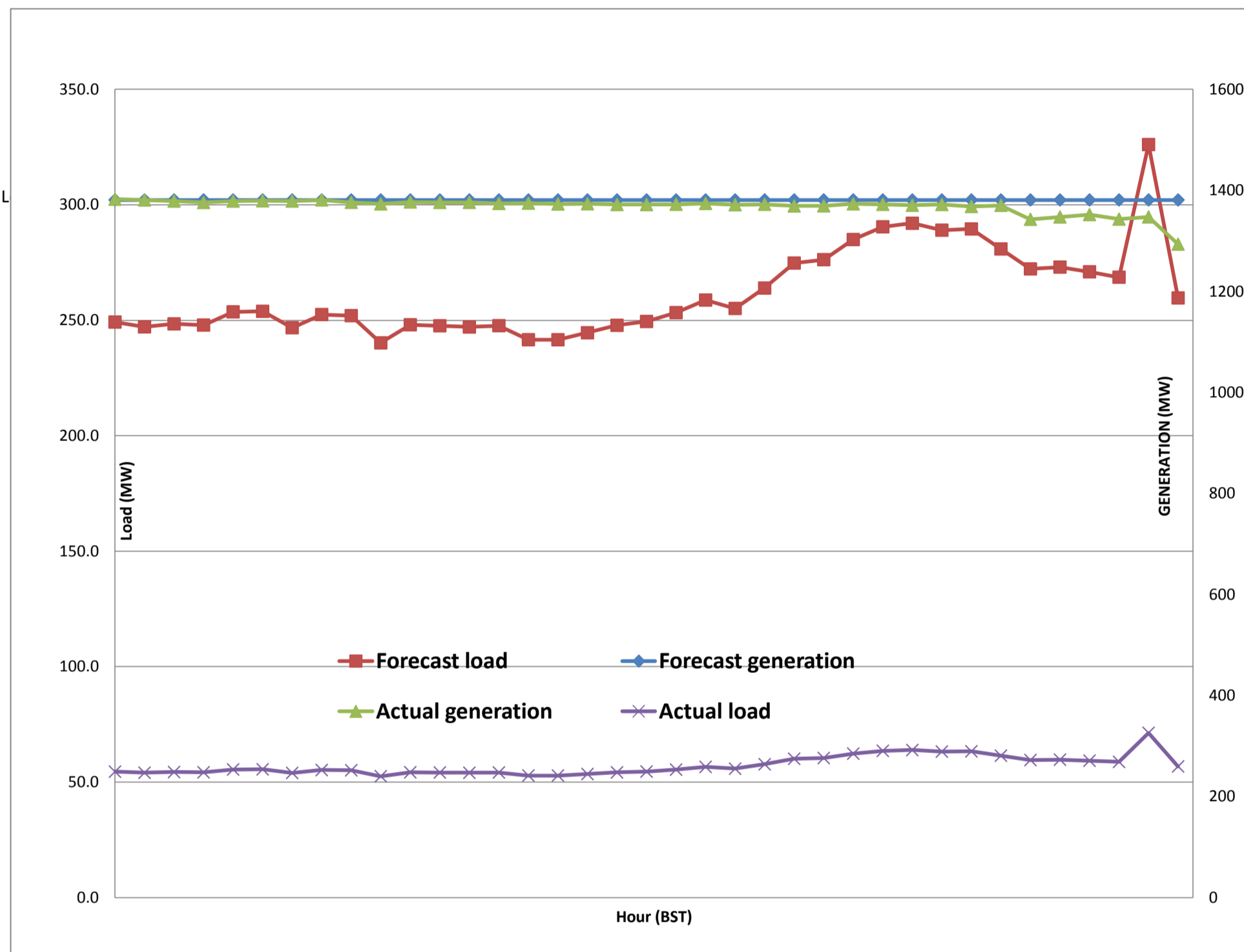
Sign:
Pema Lhamo



Message No.: Enter your message number
 From: Shift In-charge, Control Room

10/1/2017 12:50 5-Oct-17
 10/1/2017 12:50 10:53

Forecast Generation & Load with Actual Generation & Load of Today from 00:00hrs to 09:00hrs(05-Oct-2017).





འབྲུག་གྲོག་ལས་ཁུངས་ལྷན་ཁག།
Bhutan Power Corporation Ltd.
Bhutan Power System Operator
 Thimphu: Bhutan



Message No.: Enter your message number
From: Shift In-charge, Control Room
Date: 5-Oct-17
Time: 10:53
To: Managing Director, BPC. Email: gemtshering@bpc.bt
 Director, O&MD, DGPC. Email: director.umd@drukgreen.com
 General Manager, TD, BPC. Email: ktobgye@bpc.bt
 General Manager, BPSO, BPC. Email: ujjwaldahal@bpc.bt
 Advisor, BPC. Email: bharattamang@bpc.bt
Sub: Load Generation Balance Report of Tomorrow (06-Oct-2017).

 ###

Hours (BST)	Forecast		Hours (BST)	Forecast	
	Generation	Load		Generation	Load
0:00	1319.4	250.70	12:00	1319.4	257.4
0:15	1319.4	247.20	12:15	1319.4	258
0:30	1319.4	245.50	12:30	1319.4	257.4
0:45	1319.4	244.20	12:45	1319.4	253.6
1:00	1319.4	244.20	13:00	1319.4	253
1:15	1319.4	245.90	13:15	1319.4	252.7
1:30	1319.4	244.50	13:30	1319.4	252.7
1:45	1319.4	245.40	13:45	1319.4	253.4
2:00	1319.4	245.80	14:00	1319.4	250.3
2:15	1319.4	245.80	14:15	1319.4	252.4
2:30	1319.4	244.30	14:30	1319.4	253.3
2:45	1319.4	249.10	14:45	1319.4	254
3:00	1319.4	248.40	15:00	1319.4	255.3
3:15	1319.4	248.70	15:15	1319.4	256.4
3:30	1319.4	247.50	15:30	1319.4	253.6
3:45	1319.4	244.20	15:45	1319.4	253.8
4:00	1319.4	247.40	16:00	1319.4	255.4
4:15	1319.4	245.70	16:15	1319.4	254.5
4:30	1319.4	246.60	16:30	1319.4	257.6
4:45	1319.4	247.40	16:45	1319.4	259.8
5:00	1319.4	250.40	17:00	1319.4	263.3
5:15	1319.4	252.70	17:15	1319.4	266.4
5:30	1319.4	254.60	17:30	1319.4	274.5
6:45	1319.4	260.40	17:45	1319.4	283.9
6:00	1319.4	269.90	18:00	1319.4	293.9
6:15	1319.4	277.20	18:15	1319.4	301.5
6:30	1319.4	282.30	18:30	1319.4	306.5
6:45	1319.4	284.10	18:45	1319.4	306.7
7:00	1319.4	281.50	19:00	1319.4	302.9
7:15	1319.4	280.80	19:15	1319.4	302.3
7:30	1319.4	278.10	19:30	1319.4	299.6
7:45	1319.4	272.50	19:45	1319.4	293.7
8:00	1319.4	269.40	20:00	1319.4	290.4
8:15	1319.4	269.80	20:15	1319.4	289.9
8:30	1319.4	268.40	20:30	1319.4	283.3
8:45	1319.4	268.00	20:45	1319.4	281.3
9:00	1319.4	262.40	21:00	1319.4	275.1
9:15	1319.4	262.40	21:15	1319.4	273.2
9:30	1319.4	266.10	21:30	1319.4	274
9:45	1319.4	259.30	21:45	1319.4	271.7
10:00	1319.4	265.20	22:00	1319.4	266
10:15	1319.4	259.80	22:15	1319.4	261.3
10:30	1319.4	256.50	22:30	1319.4	259.9
10:45	1319.4	253.40	22:45	1319.4	255.5
11:00	1319.4	255.50	23:00	1319.4	256.2
11:15	1319.4	257.20	23:15	1319.4	252.5
11:30	1319.4	258.60	23:30	1319.4	254.1
11:45	1319.4	256.10	23:45	1319.4	250.1

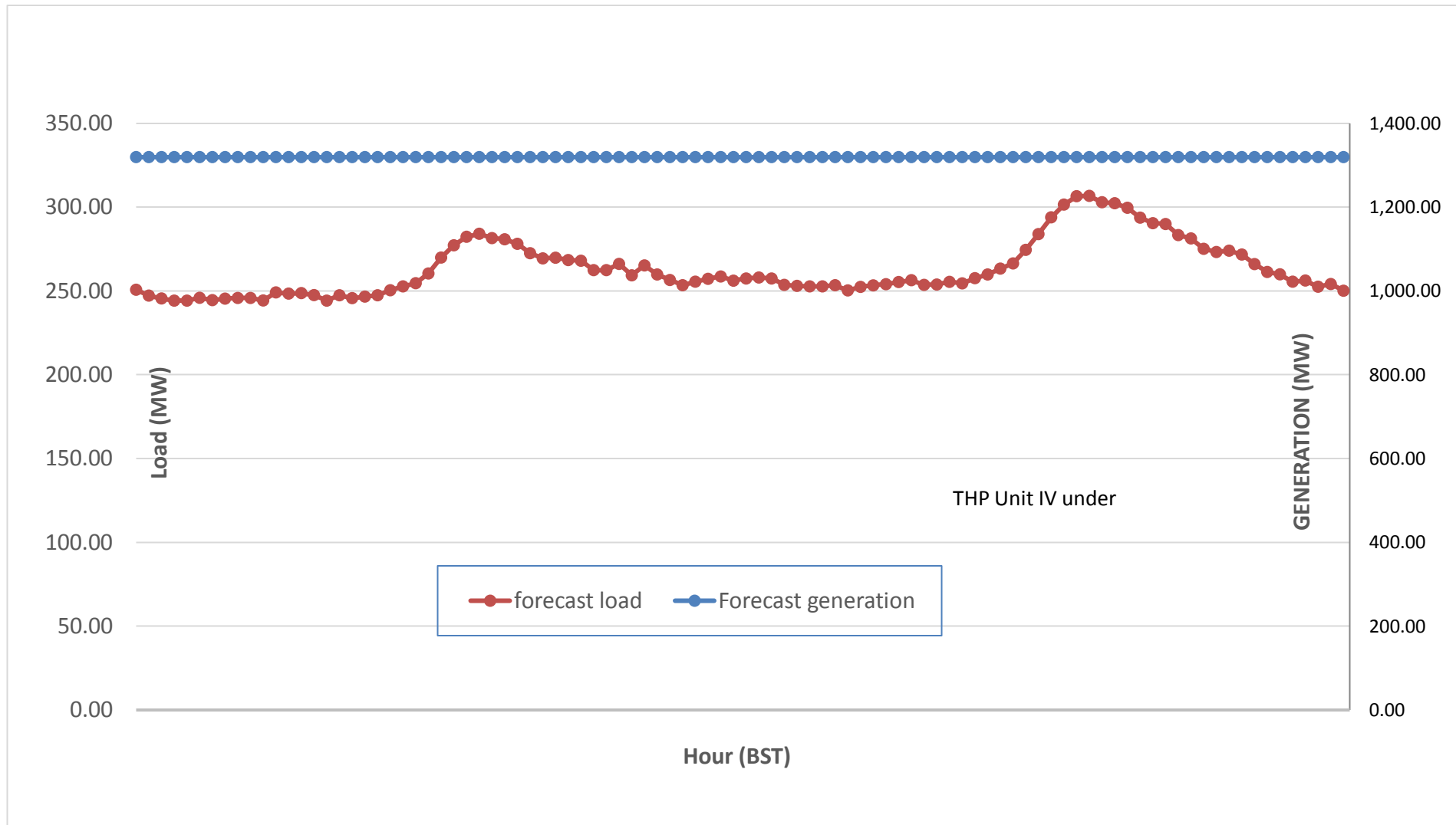
Yours faithfully,
 Sign:
 Pema Lhamo



Message No.: Enter your message number
 From: Shift In-charge, Control Room

Date: 5-Oct-17
 Time: 10:53

Scheduled Generation & Load Forecast for Tomorrow (06-Oct-2017).



Yours faithfully,

Sign:
Pema Lhamo

	MW
Scheduled Peak Generation(06-Oct-2017).	376.90
Forecast Peak Load(06-Oct-2017).	300.60