



ཕྱག་ལུག་སྐོག་མེ་ལས་འཛིན།

Bhutan Power Corporation Ltd.
Bhutan Power System Operator
Thimphu: Bhutan



Message No.: Enter your message number
From: Shift In-charge, Control Room

Date: 4-Oct-17
Time: 10:32

To
Managing Director, BPC. Email: gemtshering@bpc.bt
Director, O&MD, DGPC. Email: director.umd@drukgreen.com
General Manager, TD, BPC. Email: ktobgye@bpc.bt
General Manager, DCSD, BPC. Email: sandeeprai@bpc.bt
General Manager, BPSO, BPC. Email: ujjwaldahal@bpc.bt

Sub: Load Generation Balance Report of Yesterday (03-Oct-2017).

Hours (BST)	Forecast		Actual		Hours (BST)	Forecast		Actual	
	Generation	Load	Generation	Load		Generation	Load	Generation	Load
0:00	1462.7	254.3	1503.9	249.9	12:00	1462.7	260.3	1515.3	241.85
0:15	1462.7	247.4	1503.8	248.5	12:15	1462.7	257.7	1490.8	245.33
0:30	1462.7	247.2	1510.5	247.8	12:30	1462.7	260	1486.5	246.20
0:45	1462.7	248	1514.7	249.3	12:45	1462.7	257.2	1490.7	236.19
1:00	1462.7	247.4	1511.6	241.7	13:00	1462.7	250.2	1491.0	245.44
1:15	1462.7	252.2	1525.8	243.5	13:15	1462.7	251.4	1491.6	246.96
1:30	1462.7	252.2	1524.5	242.4	13:30	1462.7	248.1	1481.4	248.30
1:45	1462.7	251	1522.4	246.6	13:45	1462.7	251.4	1489.3	254.68
2:00	1462.7	252.4	1530.3	247.5	14:00	1462.7	246.7	1484.9	256.30
2:15	1462.7	251.7	1528.8	248.3	14:15	1462.7	250.5	1459.6	253.93
2:30	1462.7	250	1524.8	235.2	14:30	1462.7	247.7	1462.3	258.78
2:45	1462.7	253.2	1522.0	244.4	14:45	1462.7	250.7	1470.4	264.66
3:00	1462.7	252.5	1517.4	245.6	15:00	1462.7	251.4	1461.1	260.10
3:15	1462.7	252.2	1528.7	239.3	15:15	1462.7	255.8	1450.0	260.95
3:30	1462.7	250.9	1527.3	242.4	15:30	1462.7	254.4	1444.8	262.83
3:45	1462.7	247.7	1523.9	240.7	15:45	1462.7	256.8	1437.3	242.07
4:00	1462.7	249.9	1528.1	246.0	16:00	1462.7	258.4	1448.2	237.18
4:15	1462.7	248.9	1523.8	237.4	16:15	1462.7	260.7	1272.3	232.47
4:30	1462.7	251	1522.2	240.2	16:30	1462.7	264.5	1445.9	239.01
4:45	1462.7	252.7	1522.5	245.4	16:45	1462.7	265	1441.3	234.41
5:00	1462.7	255	1526.5	239.9	17:00	1462.7	267.4	1451.0	237.65
5:15	1462.7	253.3	1525.2	254.9	17:15	1462.7	272.3	1442.7	250.53
5:30	1462.7	252.3	1519.6	254.8	17:30	1462.7	278	1442.1	268.59
6:45	1462.7	255.2	1521.9	261.5	17:45	1462.7	283.4	1447.3	281.07
6:00	1462.7	266.4	1526.6	271.5	18:00	1462.7	289.4	1438.6	293.48
6:15	1462.7	273.2	1523.1	277.0	18:15	1462.7	298.4	1442.8	311.11
6:30	1462.7	272.9	1526.7	281.2	18:30	1462.7	300.4	1447.0	314.29
6:45	1462.7	280.5	1523.2	275.3	18:45	1462.7	300.7	1440.6	310.82
7:00	1462.7	278.6	1527.6	280.3	19:00	1462.7	297.8	1439.2	299.80
7:15	1462.7	276.1	1529.1	278.9	19:15	1462.7	294.6	1440.9	296.81
7:30	1462.7	271.4	1527.9	272.6	19:30	1462.7	292.5	1442.0	297.38
7:45	1462.7	272.9	1518.5	266.4	19:45	1462.7	290.8	1403.4	288.20
8:00	1462.7	269.7	1524.6	259.4	20:00	1462.7	285.6	1413.7	285.13
8:15	1462.7	270	1527.5	264.0	20:15	1462.7	285.1	1406.5	285.73
8:30	1462.7	265.2	1528.1	262.0	20:30	1462.7	275.7	1412.4	287.80
8:45	1462.7	262.1	1522.4	270.4	20:45	1462.7	276.5	1404.1	285.00
9:00	1462.7	263.7	1525.2	266.1	21:00	1462.7	268.8	1406.8	276.87
9:15	1462.7	254.3	1529.9	272.0	21:15	1462.7	269.8	1400.3	270.09
9:30	1462.7	262.6	1528.1	267.1	21:30	1462.7	269.8	1414.2	272.28
9:45	1462.7	256.3	1522.8	262.5	21:45	1462.7	268.7	1416.3	270.52
10:00	1462.7	263.7	1532.0	265.4	22:00	1462.7	263.6	1406.8	269.41
10:15	1462.7	260.9	1527.8	237.0	22:15	1462.7	262	1411.4	262.17
10:30	1462.7	257.9	1523.2	240.9	22:30	1462.7	261.8	1407.3	252.22
10:45	1462.7	253.7	1531.3	240.3	22:45	1462.7	258.6	1411.3	250.16
11:00	1462.7	257.4	1529.0	236.6	23:00	1462.7	256.1	1404.8	247.54
11:15	1462.7	261.4	1524.6	239.6	23:15	1462.7	251.6	1410.9	251.61
11:30	1462.7	260.2	1521.3	236.5	23:30	1462.7	253.8	1404.7	245.50
11:45	1462.7	261.9	1519.3	237.4	23:45	1462.7	250.6	1408.0	250.37

Yours faithfully,

Sign:
Pema Lhamo

Coincidental peak load of Day(Last year):	
251.71	3-Oct-16
Maximum Load till date:	
344.02 MW	18-Mar-17



འབྲུག་གློག་ལེ་ལས་འཛིན།

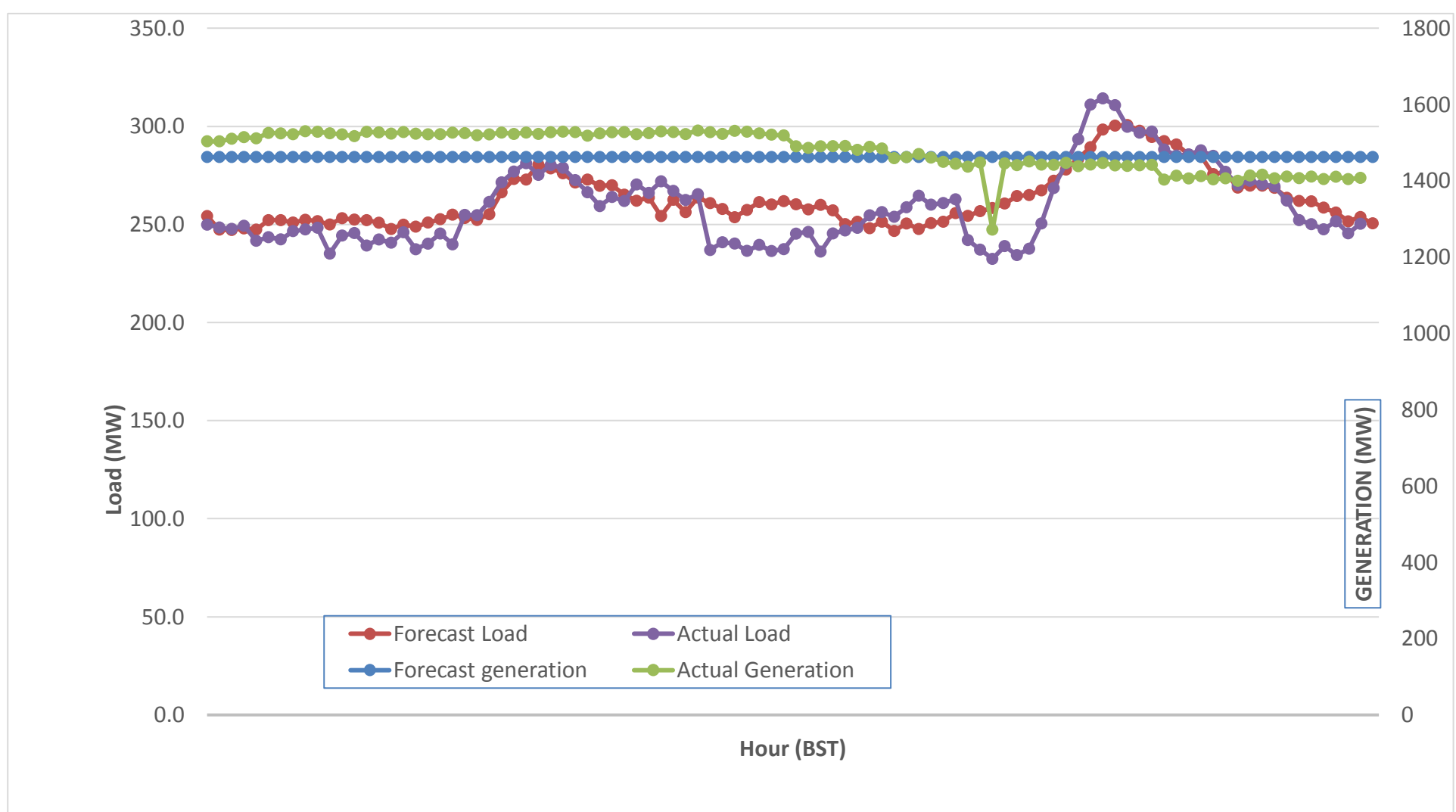
Bhutan Power Corporation Ltd.
 Bhutan Power System Operator
 Thimphu: Bhutan



Message No.: Enter your message number
 From: Shift In-charge, Control Room

Date: 4-Oct-17
 Time: 10:32

Forecast Generation & Load with Actual Generation & Load (03-Oct-2017).



Yours faithfully,

Sign:
Pema Lhamo

	MW
Peak Co-incident Generation(03-Oct-2017).	1532.00
Peak Co-incident Load(03-Oct-2017).	314.29

Coincidental peak load of Day(Last year):	
251.71	3-Oct-16
Maximum Load till date:	
344.02 MW	18-Mar-17

Telephone: +975-02335631; Fax: +975-02335632; Email: bhutansystemoperator@bpc.bt; www.bpc.bt



ལྷན་སྐྱོད་ལྷན་ཁག་ལྷན་ཁག་།

Bhutan Power Corporation Ltd.
Bhutan Power System Operator
Thimphu: Bhutan



Message No.: Enter your message number
From: Shift In-charge, Control Room

Date: 4-Oct-17
Time: 10:32

To

Managing Director, BPC. Email: gemtshering@bpc.bt
Director, O&MD, DGPC. Email: director.omb@drukgreen.com
General Manager, TD, BPC. Email: thinleygyeltshen@bpc.bt
General Manager, DCSD, BPC. Email: sandeprai@bpc.bt
General Manager, BPSO, BPC. Email: ujjwaldahal@bpc.bt

Sub:

Load Generation Balance Report of Today (04-Oct-2017).

Hours (BST)	Forecast		Actual	
	Generation	Load	Generation	Load
0:00	1508.9	250.9	1412.0	247.41
0:15	1508.9	245.9	1403.4	248.25
0:30	1508.9	243.1	1401.9	246.11
0:45	1508.9	243.9	1408.9	244.31
1:00	1508.9	243.9	1413.1	240.73
1:15	1508.9	248.3	1408.8	242.70
1:30	1508.9	248.4	1405.6	239.37
1:45	1508.9	245.7	1411.5	241.20
2:00	1508.9	248.6	1406.9	235.60
2:15	1508.9	248.9	1409.1	235.16
2:30	1508.9	247.1	1402.5	242.68
2:45	1508.9	250	1401.1	245.44
3:00	1508.9	248.8	1409.2	245.61
3:15	1508.9	250.9	1407.0	245.72
3:30	1508.9	249.6	1403.5	240.25
3:45	1508.9	247	1407.6	243.12
4:00	1508.9	249.3	1401.9	243.22
4:15	1508.9	248.7	1407.5	244.98
4:30	1508.9	248.1	1405.1	246.04
4:45	1508.9	249.7	1411.7	249.38
5:00	1508.9	252.7	1403.4	247.23
5:15	1508.9	251.1	1389.4	249.39
5:30	1508.9	251.2	1386.5	257.37
5:45	1508.9	256.1	1388.8	266.52
6:00	1508.9	267.2	1380.8	274.19
6:15	1508.9	272.3	1386.8	285.43
6:30	1508.9	276	1382.7	291.25
6:45	1508.9	281.5	1391.0	292.21
7:00	1508.9	280.1	1379.5	277.49
7:15	1508.9	278.7	1387.0	287.30
7:30	1508.9	275.4	1380.2	282.70
7:45	1508.9	274.4	1388.2	278.04
8:00	1508.9	270.4	1379.9	268.22
8:15	1508.9	270.4	1377.7	270.88
8:30	1508.9	267.1	1380.2	266.33
8:45	1508.9	265.1	1382.4	269.09
9:00	1508.9	265.1	1383.5	256.20

Coincidental peak load of Day(Last year):	
249.78	4-Oct-17
Maximum Load till date:	
344.02 MW	18-Mar-17

Yours faithfully,

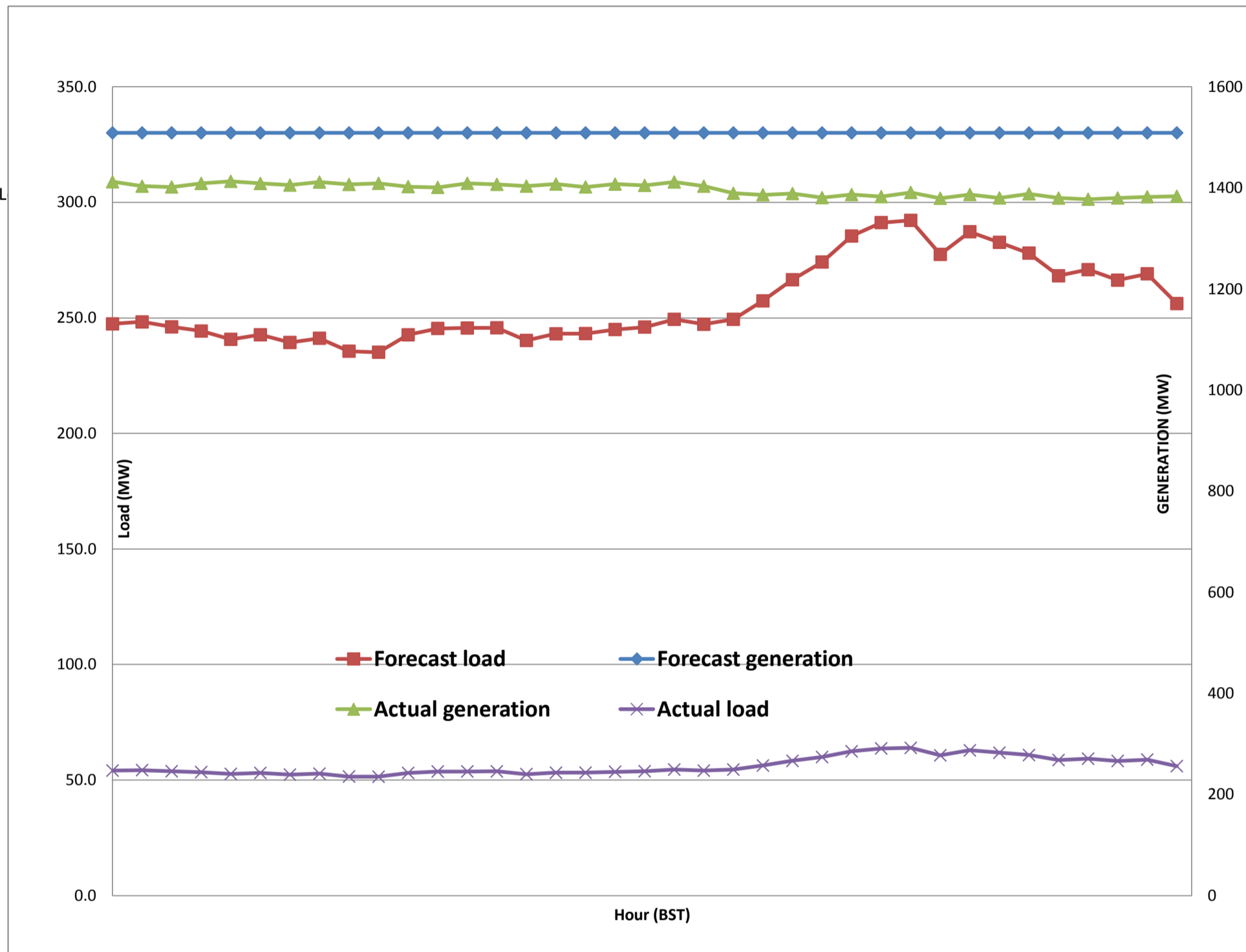
Sign:
Pema Lhamo



Message No.: Enter your message number
 From: Shift In-charge, Control Room

10/1/2017 12:50 4-Oct-17
 10/1/2017 12:50 10:32

Forecast Generation & Load with Actual Generation & Load of Today from 00:00hrs to 09:00hrs(04-Oct-2017).





འབྲུག་གྲོག་ལས་ཁུངས་ལཱ་རྒྱུ་ལེ་སྐོར་ལྷན་ཁག་།
Bhutan Power Corporation Ltd.
Bhutan Power System Operator
 Thimphu: Bhutan



Message No.: Enter your message number
From: Shift In-charge, Control Room
Date: 4-Oct-17
Time: 10:32
To: Managing Director, BPC. Email: gemtshering@bpc.bt
 Director, O&MD, DGPC. Email: director.umd@drukgreen.com
 General Manager, TD, BPC. Email: ktobgye@bpc.bt
 General Manager, BPSO, BPC. Email: ujjwaldahal@bpc.bt
 Advisor, BPC. Email: bharattamang@bpc.bt
Sub: Load Generation Balance Report of Tomorrow (05-Oct-2017).

 ###

Hours (BST)	Forecast		Hours (BST)	Forecast	
	Generation	Load		Generation	Load
0:00	1376	251.20	12:00	1376	261.4
0:15	1376	247.00	12:15	1376	259.3
0:30	1376	245.20	12:30	1376	260.5
0:45	1376	244.30	12:45	1376	255.3
1:00	1376	244.00	13:00	1376	255.6
1:15	1376	246.10	13:15	1376	255.1
1:30	1376	247.80	13:30	1376	255.1
1:45	1376	246.50	13:45	1376	257.5
2:00	1376	248.90	14:00	1376	254
2:15	1376	248.20	14:15	1376	256.6
2:30	1376	245.00	14:30	1376	256.7
2:45	1376	249.70	14:45	1376	258.9
3:00	1376	248.40	15:00	1376	258.9
3:15	1376	249.40	15:15	1376	260.6
3:30	1376	248.60	15:30	1376	259
3:45	1376	245.20	15:45	1376	257.8
4:00	1376	247.80	16:00	1376	259.3
4:15	1376	245.50	16:15	1376	258.6
4:30	1376	245.90	16:30	1376	261.9
4:45	1376	248.00	16:45	1376	262.2
5:00	1376	250.10	17:00	1376	265.8
5:15	1376	252.50	17:15	1376	273.3
5:30	1376	253.30	17:30	1376	278.3
6:45	1376	257.40	17:45	1376	285.4
6:00	1376	267.20	18:00	1376	295.3
6:15	1376	274.80	18:15	1376	305.2
6:30	1376	277.90	18:30	1376	305.4
6:45	1376	282.00	18:45	1376	305.3
7:00	1376	280.30	19:00	1376	301.7
7:15	1376	279.20	19:15	1376	297.5
7:30	1376	275.30	19:30	1376	295.6
7:45	1376	272.00	19:45	1376	289.7
8:00	1376	268.70	20:00	1376	285.8
8:15	1376	269.50	20:15	1376	285
8:30	1376	266.90	20:30	1376	278.1
8:45	1376	266.70	20:45	1376	277.7
9:00	1376	266.40	21:00	1376	271.4
9:15	1376	263.20	21:15	1376	269.3
9:30	1376	267.70	21:30	1376	270.8
9:45	1376	261.00	21:45	1376	269.8
10:00	1376	265.40	22:00	1376	264.9
10:15	1376	259.90	22:15	1376	260.9
10:30	1376	256.30	22:30	1376	259.4
10:45	1376	254.30	22:45	1376	255.5
11:00	1376	255.30	23:00	1376	255.5
11:15	1376	257.90	23:15	1376	250.2
11:30	1376	258.90	23:30	1376	252.7
11:45	1376	257.10	23:45	1376	250.2

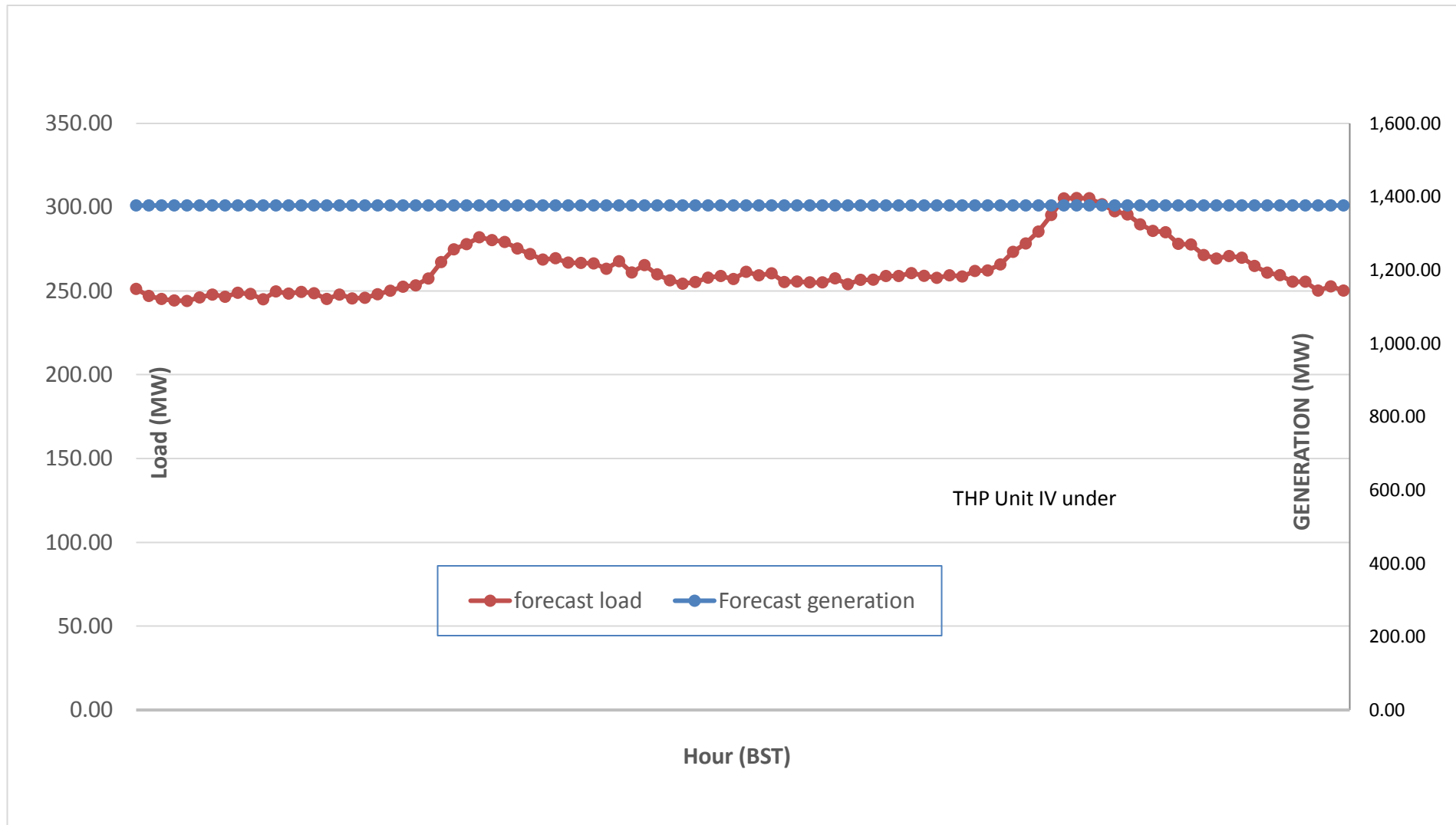
Yours faithfully,
 Sign:
 Pema Lhamo



Message No.: Enter your message number
 From: Shift In-charge, Control Room

Date: 4-Oct-17
 Time: 10:32

Scheduled Generation & Load Forecast for Tomorrow (05-Oct-2017).



Yours faithfully,

Sign:
Pema Lhamo

	MW
Scheduled Peak Generation(05-Oct-2017).	376.90
Forecast Peak Load(05-Oct-2017).	300.60