



འབྲུག་གླིང་མེ་ལམ་འཛིན།

Bhutan Power Corporation Ltd.
Bhutan Power System Operator
Thimphu: Bhutan



Message No.: Enter your message number
From: Shift In-charge, Control Room

Date: 1-Oct-17
Time: 12:50

To
Managing Director, BPC. Email: gemtshering@bpc.bt
Director, O&MD, DGPC. Email: director.umd@drukgreen.com
General Manager, TD, BPC. Email: ktobgye@bpc.bt
General Manager, DCSD, BPC. Email: sandeeprai@bpc.bt
General Manager, BPSO, BPC. Email: ujjwaldahal@bpc.bt

Sub: Load Generation Balance Report of Yesterday (30-Sep-2017).

Hours (BST)	Forecast		Actual		Hours (BST)	Forecast		Actual	
	Generation	Load	Generation	Load		Generation	Load	Generation	Load
0:00	1354.4	232.7	1455.7	267.46	12:00	1354.4	246.4	1732.5	260.51
0:15	1354.4	233	1402.5	240.73	12:15	1354.4	243.8	1732.0	282.17
0:30	1354.4	232	1347.5	259.02	12:30	1354.4	238.8	1728.1	282.88
0:45	1354.4	233.4	1343.6	256.20	12:45	1354.4	236.5	1730.0	278.73
1:00	1354.4	232.8	1349.1	263.95	13:00	1354.4	234.2	1641.2	273.47
1:15	1354.4	237.9	1348.2	266.39	13:15	1354.4	234	1482.1	271.03
1:30	1354.4	238.7	1346.2	266.66	13:30	1354.4	235.5	1484.2	271.52
1:45	1354.4	239.1	1350.8	261.86	13:45	1354.4	234.8	1488.6	263.79
2:00	1354.4	239	1350.2	262.72	14:00	1354.4	232.3	1478.2	266.17
2:15	1354.4	235.8	1351.4	265.48	14:15	1354.4	232.4	1484.5	266.48
2:30	1354.4	236.6	1350.9	252.60	14:30	1354.4	234	1544.9	264.55
2:45	1354.4	237.4	1352.1	258.25	14:45	1354.4	234.6	1534.7	263.30
3:00	1354.4	237.9	1348.9	260.20	15:00	1354.4	235.9	1541.8	257.13
3:15	1354.4	235.7	1351.3	263.19	15:15	1354.4	237.6	1547.4	258.83
3:30	1354.4	231.9	1343.5	262.73	15:30	1354.4	241	1532.6	258.16
3:45	1354.4	230.3	1347.6	263.44	15:45	1354.4	242.6	1542.6	257.13
4:00	1354.4	230.9	1352.5	257.95	16:00	1354.4	245.4	1543.0	255.34
4:15	1354.4	228	1348.4	266.23	16:15	1354.4	245.9	1535.0	255.74
4:30	1354.4	230.3	1350.7	260.26	16:30	1354.4	248.7	1612.4	267.05
4:45	1354.4	231.3	1349.8	267.08	16:45	1354.4	250.7	1631.5	269.70
5:00	1354.4	232	1354.4	266.45	17:00	1354.4	251.5	1631.2	270.59
5:15	1354.4	233.3	1378.3	266.31	17:15	1354.4	253.6	1639.8	280.10
5:30	1354.4	234.8	1379.9	265.76	17:30	1354.4	256.8	1711.5	288.90
6:45	1354.4	237.3	1383.2	272.78	17:45	1354.4	257.3	1710.3	298.89
6:00	1354.4	241.6	1385.8	273.86	18:00	1354.4	261.3	1711.6	303.30
6:15	1354.4	248.6	1423.9	278.89	18:15	1354.4	266.1	1714.3	309.30
6:30	1354.4	248.1	1426.8	285.41	18:30	1354.4	269	1712.2	318.33
6:45	1354.4	251.5	1429.8	289.73	18:45	1354.4	271.2	1714.2	309.48
7:00	1354.4	250.4	1432.3	283.48	19:00	1354.4	269.5	1711.2	312.06
7:15	1354.4	248.4	1433.8	291.02	19:15	1354.4	266.9	1709.8	309.02
7:30	1354.4	246	1432.7	292.10	19:30	1354.4	265.5	1710.8	303.95
7:45	1354.4	244.9	1433.9	279.02	19:45	1354.4	262.4	1709.5	302.75
8:00	1354.4	243.6	1434.3	293.09	20:00	1354.4	261.5	1707.1	298.50
8:15	1354.4	242.8	1434.5	284.38	20:15	1354.4	260	1709.8	289.82
8:30	1354.4	243.1	1505.0	288.35	20:30	1354.4	250.5	1717.0	290.59
8:45	1354.4	240.3	1511.3	286.96	20:45	1354.4	254.2	1710.3	284.72
9:00	1354.4	242.5	1516.4	284.19	21:00	1354.4	244.9	1712.7	282.67
9:15	1354.4	244.4	1514.3	284.09	21:15	1354.4	245.3	1715.0	286.63
9:30	1354.4	244.5	1514.7	282.42	21:30	1354.4	251.5	1712.9	285.20
9:45	1354.4	242.7	1509.9	279.97	21:45	1354.4	248.4	1709.7	280.24
10:00	1354.4	243.8	1509.5	270.88	22:00	1354.4	242.3	1710.8	274.67
10:15	1354.4	242.6	1531.3	278.46	22:15	1354.4	240.6	1689.5	274.75
10:30	1354.4	243.1	1544.3	263.42	22:30	1354.4	244.9	1696.3	271.30
10:45	1354.4	241.7	1532.2	265.30	22:45	1354.4	239.4	1661.6	267.46
11:00	1354.4	240.9	1605.7	277.07	23:00	1351.4	242.9	1665.8	260.64
11:15	1354.4	242.4	1649.6	282.32	23:15	1351.4	236.7	1656.5	258.79
11:30	1354.4	248.7	1723.5	280.78	23:30	1351.4	240.8	1660.3	263.84
11:45	1354.4	242.8	1720.1	280.41	23:45	1351.4	237.8	1662.9	260.19

Yours faithfully,

Sign:
Karma Yangden

Coincidental peak load of Day(Last year):	
286.98 MW	30-Sep-16
Maximum Load till date:	
344.02 MW	18-Mar-17



འབྲུག་རྒྱལ་ཁོ་ལས་འཛིན།

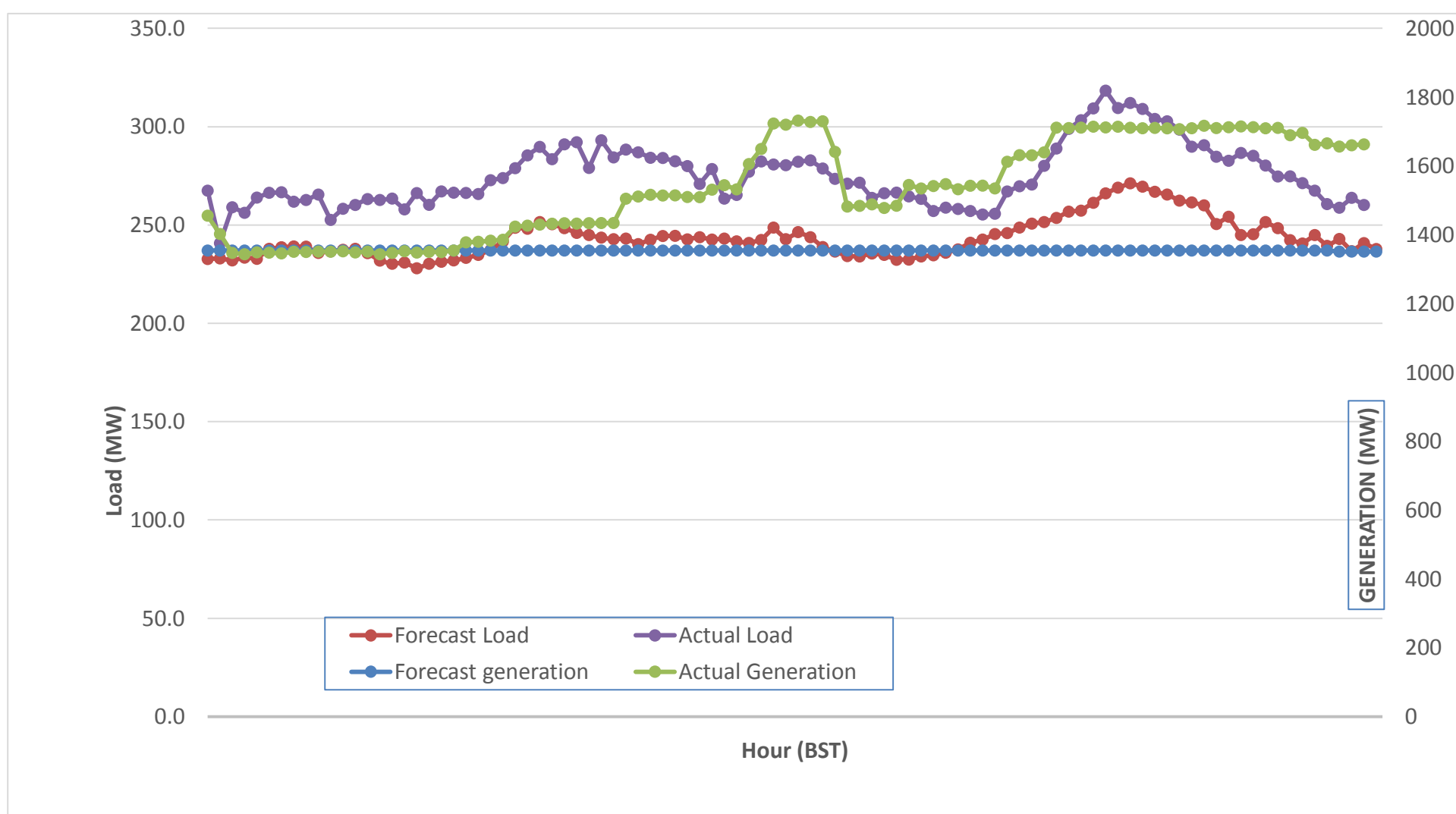
Bhutan Power Corporation Ltd.
 Bhutan Power System Operator
 Thimphu: Bhutan



Message No.: Enter your message number
 From: Shift In-charge, Control Room

Date: 1-Oct-17
 Time: 12:50

Forecast Generation & Load with Actual Generation & Load (30-Sep-2017).



Yours faithfully,

Sign:
Karma Yangden

	MW
Peak Co-incident Generation(30-Sep-2017).	1732.50
Peak Co-incident Load(30-Sep-2017).	318.33

Coincidental peak load of Day(Last year):	
286.98 MW	30-Sep-16
Maximum Load till date:	
344.02 MW	18-Mar-17

Telephone: +975-02335631; Fax: +975-02335632; Email: bhutansystemoperator@bpc.bt; www.bpc.bt



ལྷན་སྐྱོད་ལྷན་ཁག་ལྷན་ཁག་།
Bhutan Power Corporation Ltd.
Bhutan Power System Operator
Thimphu: Bhutan



Message No.: Enter your message number
From: Shift In-charge, Control Room

Date: 1-Oct-17
Time: 12:50

To
 Managing Director, BPC. Email: gemtshering@bpc.bt
 Director, O&MD, DGPC. Email: director.omid@drukgreen.com
 General Manager, TD, BPC. Email: thinleygyeltshen@bpc.bt
 General Manager, DCSD, BPC. Email: sandeprai@bpc.bt
 General Manager, BPSO, BPC. Email: ujjwaldahal@bpc.bt

Sub: Load Generation Balance Report of Today (01-Oct-2017).

Hours (BST)	Forecast		Actual	
	Generation	Load	Generation	Load
0:00	1572.8	238.5	1664.6	267.22
0:15	1572.8	237.6	1658.3	262.41
0:30	1572.8	236.5	1660.0	251.03
0:45	1572.8	237.6	1664.0	251.38
1:00	1572.8	236.3	1670.6	248.94
1:15	1572.8	243.2	1668.4	254.97
1:30	1572.8	244.8	1672.6	251.82
1:45	1572.8	241.7	1669.8	253.64
2:00	1572.8	244.3	1669.5	253.50
2:15	1572.8	241.6	1670.7	258.84
2:30	1572.8	242.2	1673.2	259.98
2:45	1572.8	244.1	1664.8	260.19
3:00	1572.8	244	1669.7	254.45
3:15	1572.8	242.8	1669.9	252.86
3:30	1572.8	239.6	1667.7	252.14
3:45	1572.8	237.2	1665.2	250.50
4:00	1572.8	238.2	1665.1	257.18
4:15	1572.8	236.2	1618.4	258.16
4:30	1572.8	238.9	1620.7	257.47
4:45	1572.8	240.2	1623.7	261.11
5:00	1572.8	242.4	1622.8	264.45
5:15	1572.8	243.2	1616.0	261.68
5:30	1572.8	243.2	1604.5	253.50
5:45	1572.8	247.2	1576.7	259.34
6:00	1572.8	254.7	1579.3	273.92
6:15	1572.8	262.7	1583.3	276.55
6:30	1572.8	263.7	1580.8	286.95
6:45	1572.8	266.6	1583.0	290.82
7:00	1572.8	265.4	1581.8	290.82
7:15	1572.8	261	1562.7	287.84
7:30	1572.8	259.4	1561.4	292.88
7:45	1572.8	256.7	1562.7	290.09
8:00	1572.8	255.8	1563.0	293.15
8:15	1572.8	252.6	1555.6	285.80
8:30	1572.8	252.8	1553.5	283.88
8:45	1572.8	242.1	1551.4	276.12
9:00	1572.8	247.9	1553.1	276.64

Coincidental peak load of Day(Last year):	
257.67 MW	1-Oct-17

Maximum Load till date:	
344.02 MW	18-Mar-17

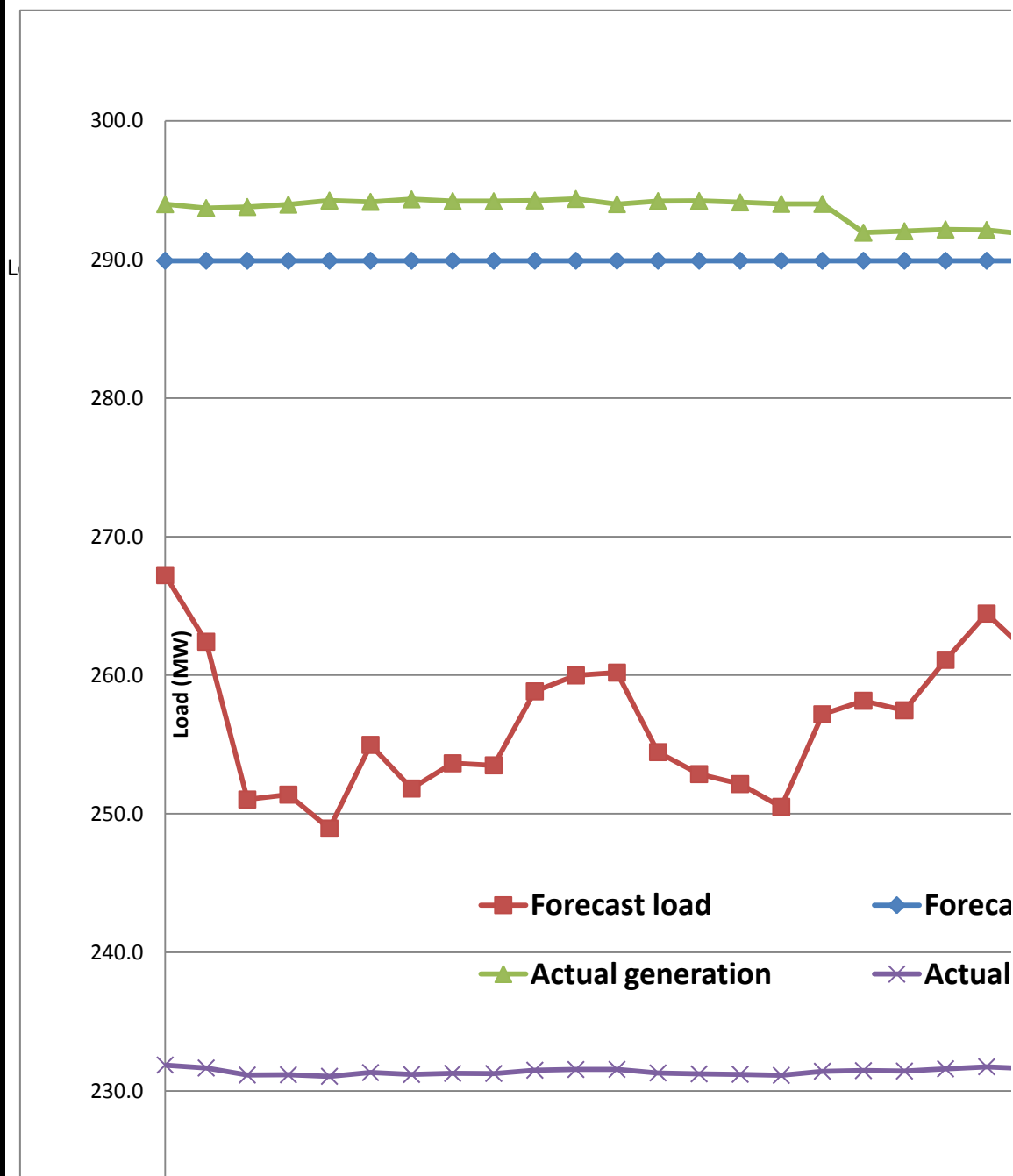
Yours faithfully,

Sign:
 Karma Yangden



Message No.: Enter your message number
From: Shift In-charge, Control Room

Forecast Generation & Load with Actual Generation & Load of To



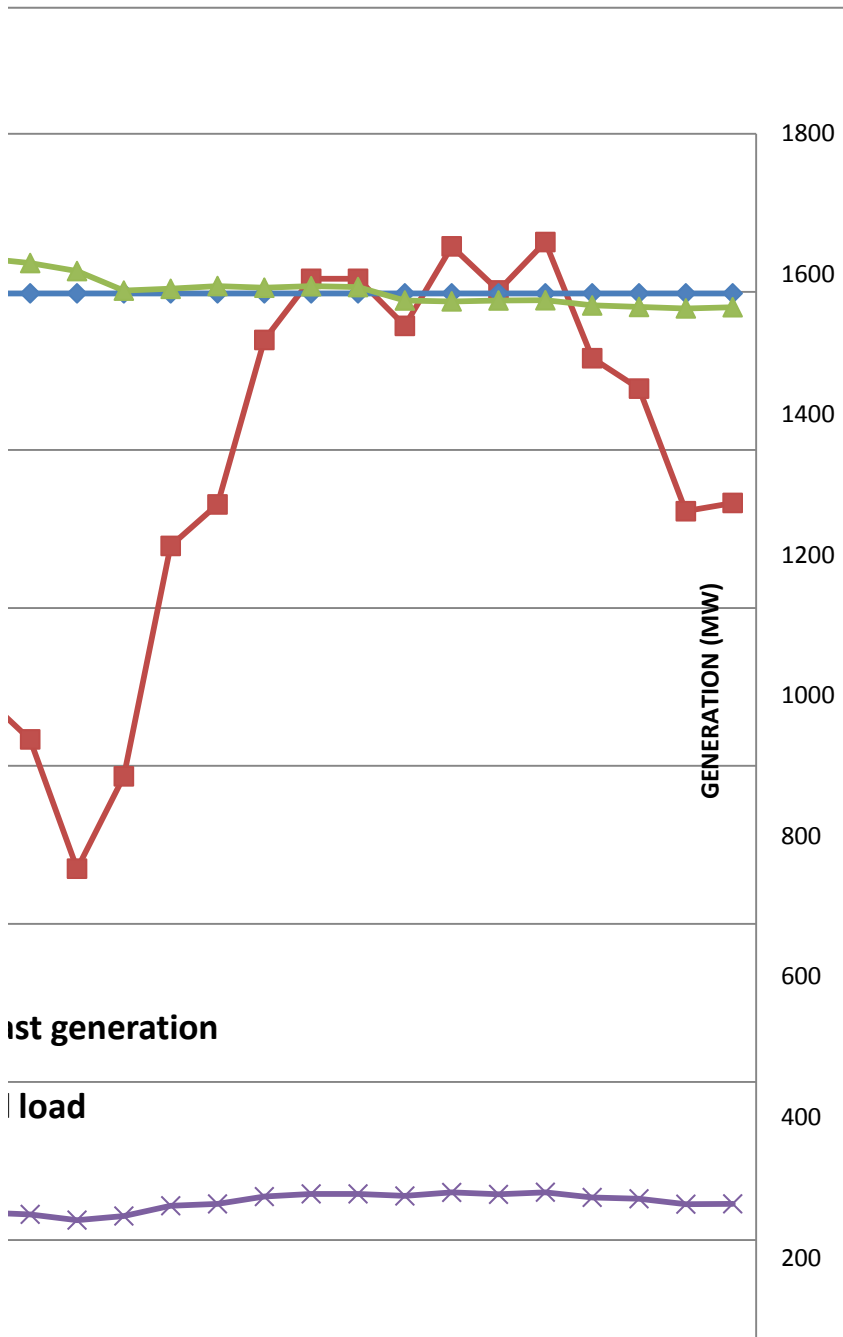
220.0

Hour (BST)



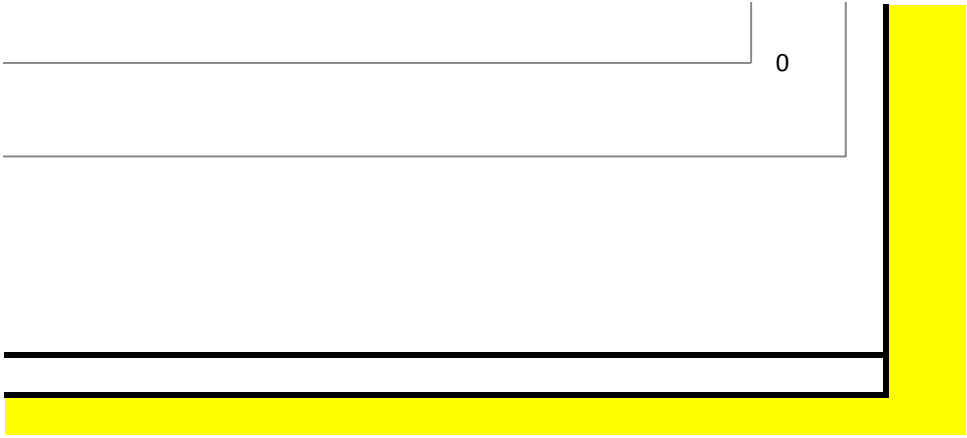
10/1/2017 12:50 1-Oct-17
10/1/2017 12:50 12:50

day from 00:00hrs to 09:00hrs(01-Oct-2017).



ist generation

load





འབྲུག་གྲོག་ལས་ཁུངས་ལྷན་ཁག།
Bhutan Power Corporation Ltd.
Bhutan Power System Operator
 Thimphu: Bhutan



Message No.: Enter your message number
From: Shift In-charge, Control Room
Date: 1-Oct-17
Time: 12:50
To: Managing Director, BPC. Email: gemtshering@bpc.bt
 Director, O&MD, DGPC. Email: director.umd@drukgreen.com
 General Manager, TD, BPC. Email: ktobgye@bpc.bt
 General Manager, BPSO, BPC. Email: ujjwaldahal@bpc.bt
 Advisor, BPC. Email: bharattamang@bpc.bt
Sub: Load Generation Balance Report of Tomorrow (02-Oct-2017).

 ###

Hours (BST)	Forecast		Hours (BST)	Forecast	
	Generation	Load		Generation	Load
0:00	1567.7	248.80	12:00	1573.9	260.9
0:15	1571.3	242.70	12:15	1573.9	257
0:30	1571.3	245.40	12:30	1573.9	261
0:45	1571.3	246.20	12:45	1573.9	257.2
1:00	1571.3	246.40	13:00	1573.9	247.4
1:15	1571.3	251.70	13:15	1572.4	252.4
1:30	1571.3	252.40	13:30	1572.4	244.5
1:45	1571.3	249.80	13:45	1569.5	250.2
2:00	1571.3	251.70	14:00	1571.7	244
2:15	1571.3	250.10	14:15	1571.7	248.7
2:30	1571.3	246.90	14:30	1575.6	246.7
2:45	1571.3	251.30	14:45	1575.6	252
3:00	1571.3	251.80	15:00	1578.8	250.6
3:15	1571.3	251.50	15:15	1578.8	254.7
3:30	1571.3	249.10	15:30	1578.8	255.4
3:45	1573.9	246.30	15:45	1578.8	255.2
4:00	1573.9	247.10	16:00	1578.8	257.2
4:15	1573.9	247.10	16:15	1578.8	259.2
4:30	1573.9	248.30	16:30	1578.8	264.9
4:45	1573.9	249.60	16:45	1578.8	264.6
5:00	1573.9	252.00	17:00	1578.8	267.2
5:15	1573.9	249.30	17:15	1578.8	271.4
5:30	1573.9	252.40	17:30	1578.8	277.4
6:45	1573.9	253.90	17:45	1578.8	284.2
6:00	1573.9	264.60	18:00	1578.8	287.5
6:15	1573.9	272.50	18:15	1578.8	294.8
6:30	1573.9	270.20	18:30	1578.8	298
6:45	1573.9	277.60	18:45	1578.8	297.6
7:00	1573.9	275.90	19:00	1578.8	295.1
7:15	1573.9	274.10	19:15	1578.8	291.4
7:30	1573.9	267.70	19:30	1578.8	289.4
7:45	1573.9	268.30	19:45	1578.8	286.3
8:00	1573.9	264.00	20:00	1578.8	280.4
8:15	1573.9	267.40	20:15	1578.8	281.7
8:30	1573.9	259.90	20:30	1578.8	274.9
8:45	1573.9	257.60	20:45	1578.8	276.3
9:00	1573.9	260.40	21:00	1578.8	269.8
9:15	1573.9	249.90	21:15	1578.8	270.7
9:30	1573.9	264.10	21:30	1578.8	271.8
9:45	1573.9	257.00	21:45	1578.8	268.9
10:00	1573.9	265.10	22:00	1578.8	262.5
10:15	1573.9	263.60	22:15	1578.8	261.7
10:30	1573.9	260.00	22:30	1578.8	263.4
10:45	1573.9	255.20	22:45	1578.8	258.7
11:00	1573.9	261.60	23:00	1578.8	257.1
11:15	1573.9	264.10	23:15	1578.8	252.2
11:30	1573.9	262.30	23:30	1577.2	254.2
11:45	1573.9	264.20	23:45	1577.2	253.3

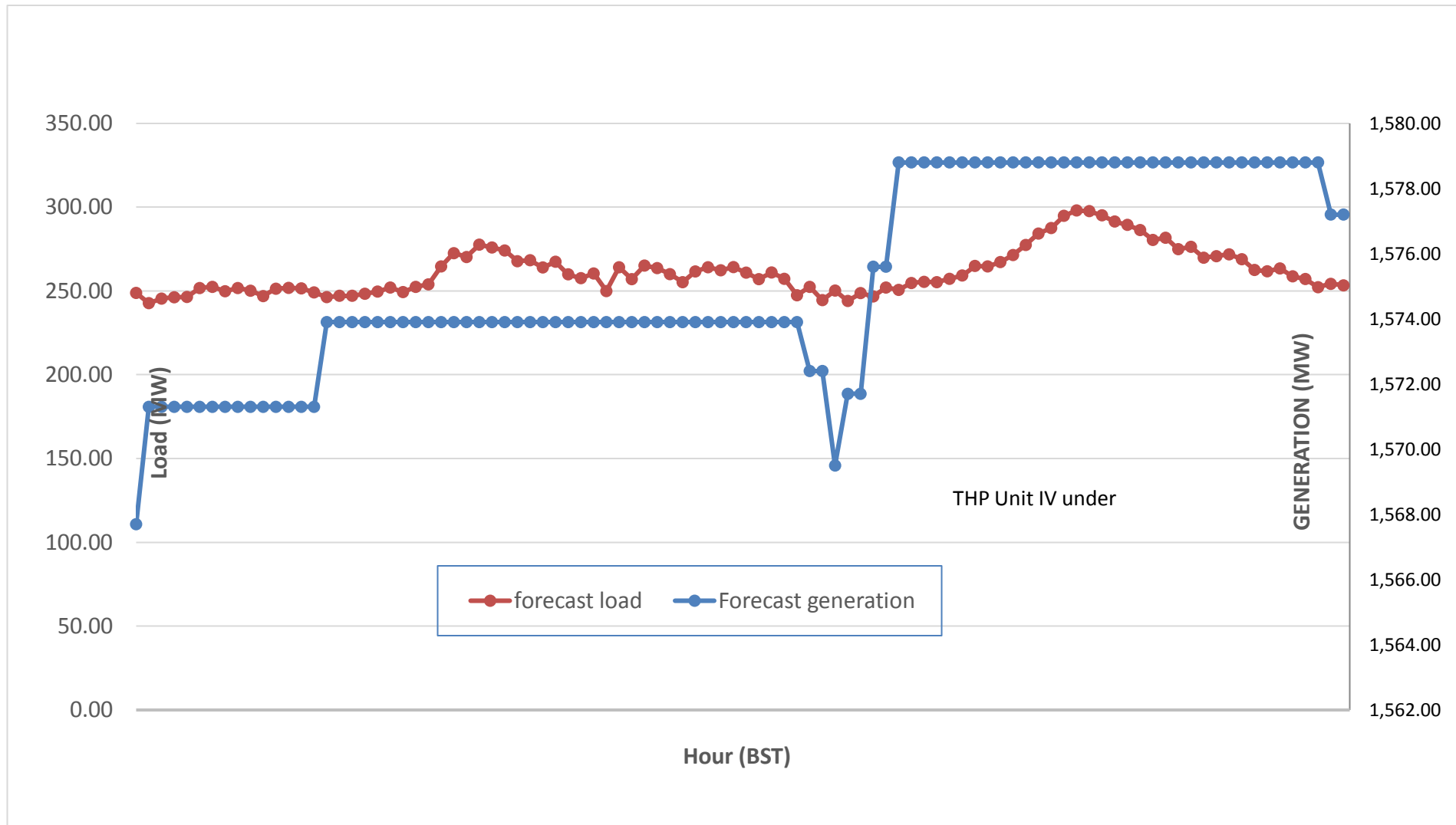
Yours faithfully,
 Sign:
 Karma Yangden



Message No.: Enter your message number
 From: Shift In-charge, Control Room

Date: 1-Oct-17
 Time: 12:50

Scheduled Generation & Load Forecast for Tomorrow (02-Oct-2017).



Yours faithfully,

Sign:
Karma Yangden

	MW
Scheduled Peak Generation(02-Oct-2017).	376.90
Forecast Peak Load(02-Oct-2017).	300.60