



འབྲུག་གླིང་མེ་ལམ་འཛིན།

Bhutan Power Corporation Ltd.  
Bhutan Power System Operator  
Thimphu: Bhutan



Message No.: Enter your message number  
From: Shift In-charge, Control Room

Date: 30-Sep-17  
Time: 10:43

To  
Managing Director, BPC. Email: gemtshering@bpc.bt  
Director, O&MD, DGPC. Email: director.umd@drukgreen.com  
General Manager, TD, BPC. Email: ktobgye@bpc.bt  
General Manager, DCSD, BPC. Email: sandeeprai@bpc.bt  
General Manager, BPSO, BPC. Email: ujjwaldahal@bpc.bt

Sub: **Load Generation Balance Report of Yesterday (29-Sep-2017).**

Hours (BST)	Forecast		Actual		Hours (BST)	Forecast		Actual	
	Generation	Load	Generation	Load		Generation	Load	Generation	Load
0:00	1381.1	225	1360.1	254.71	12:00	1381.1	237.7	1415.9	263.88
0:15	1381.1	225	1364.1	252.20	12:15	1381.1	233.5	1421.1	267.09
0:30	1381.1	224.5	1361.3	255.26	12:30	1381.1	227.3	1416.4	272.36
0:45	1381.1	224.3	1365.0	255.61	12:45	1381.1	227.7	1418.9	270.92
1:00	1381.1	224.7	1362.4	254.99	13:00	1381.1	225.6	1419.8	267.98
1:15	1381.1	231.5	1384.3	254.31	13:15	1381.1	225.1	1419.3	262.11
1:30	1381.1	230.9	1413.4	259.02	13:30	1381.1	226	1419.6	245.33
1:45	1381.1	232.3	1410.5	258.09	13:45	1381.1	226.1	1419.4	253.68
2:00	1381.1	232.3	1409.5	258.10	14:00	1381.1	225.5	1417.7	259.21
2:15	1381.1	229.8	1412.1	263.99	14:15	1381.1	224.3	1419.9	251.75
2:30	1381.1	231.4	1414.0	260.16	14:30	1381.1	224.6	1417.8	267.43
2:45	1381.1	231	1416.4	262.85	14:45	1381.1	224.9	1419.3	269.09
3:00	1381.1	231.5	1413.3	261.42	15:00	1381.1	226.5	1417.5	275.31
3:15	1381.1	229.9	1412.8	262.51	15:15	1381.1	229.9	1418.2	276.08
3:30	1381.1	223.4	1415.5	264.75	15:30	1381.1	232.2	1371.1	280.58
3:45	1381.1	221.9	1416.5	258.18	15:45	1381.1	235.1	1366.6	265.67
4:00	1381.1	223.3	1414.1	257.79	16:00	1381.1	238.3	1377.0	270.48
4:15	1381.1	221.8	1415.4	260.56	16:15	1381.1	237.7	1371.8	271.62
4:30	1381.1	223.1	1415.3	263.59	16:30	1381.1	239.9	1375.3	286.57
4:45	1381.1	222	1411.3	266.97	16:45	1381.1	240.7	1373.2	280.22
5:00	1381.1	223	1417.7	270.28	17:00	1381.1	242	1376.5	277.42
5:15	1381.1	223	1418.3	274.15	17:15	1381.1	244.5	1373.5	281.16
5:30	1381.1	224.1	1415.5	272.04	17:30	1381.1	247	1377.9	295.47
6:45	1381.1	225.7	1411.9	277.91	17:45	1381.1	247.2	1380.3	304.48
6:00	1381.1	226.3	1415.6	289.97	18:00	1381.1	247.6	1379.3	307.77
6:15	1381.1	231.3	1412.8	302.38	18:15	1381.1	248.2	1380.2	318.64
6:30	1381.1	230.8	1412.5	307.40	18:30	1381.1	249.7	1373.9	321.06
6:45	1381.1	234.6	1416.4	309.50	18:45	1381.1	251.2	1379.5	313.76
7:00	1381.1	234.4	1415.8	308.19	19:00	1381.1	250.5	1382.1	313.34
7:15	1381.1	233.8	1416.3	300.33	19:15	1381.1	250.1	1383.9	309.72
7:30	1381.1	233.1	1416.5	292.62	19:30	1381.1	248.9	1382.8	305.11
7:45	1381.1	233	1413.2	288.74	19:45	1381.1	247.7	1380.1	303.54
8:00	1381.1	233.1	1413.0	283.05	20:00	1381.1	246.9	1382.6	304.05
8:15	1381.1	233.1	1415.1	287.90	20:15	1381.1	244.8	1382.0	302.32
8:30	1381.1	233.5	1416.0	282.35	20:30	1381.1	234.3	1380.0	301.16
8:45	1381.1	233.1	1417.0	266.80	20:45	1381.1	239.9	1379.6	295.84
9:00	1381.1	233	1416.3	261.06	21:00	1381.1	230	1379.2	301.30
9:15	1381.1	233.9	1413.9	264.04	21:15	1381.1	231.7	1377.7	293.38
9:30	1381.1	233.3	1417.0	274.45	21:30	1381.1	240.4	1381.6	289.07
9:45	1381.1	232.5	1413.5	281.98	21:45	1381.1	238.8	1378.8	289.58
10:00	1381.1	232.6	1421.1	283.02	22:00	1381.1	231	1381.0	289.67
10:15	1381.1	232.1	1416.6	279.96	22:15	1381.1	230.1	1379.7	287.47
10:30	1381.1	232.1	1419.1	273.44	22:30	1381.1	237.8	1378.6	283.91
10:45	1381.1	232.3	1412.3	277.54	22:45	1381.1	229.5	1378.0	282.45
11:00	1381.1	232.4	1418.2	269.69	23:00	1381.1	234.9	1377.7	279.73
11:15	1381.1	232.9	1419.6	272.52	23:15	1381.1	229.2	1374.3	272.79
11:30	1381.1	239.8	1416.9	273.70	23:30	1381.1	233.4	1370.6	265.04
11:45	1381.1	234	1418.8	283.24	23:45	1381.1	232	1454.8	268.66

Yours faithfully,

Sign:  
Kinley Wangmo

Coincidental peak load of Day(Last year):	
286.98 MW	29-Sep-16
Maximum Load till date:	
344.02 MW	18-Mar-17



འབྲུག་རྒྱལ་ཁོ་ལས་འཛིན།

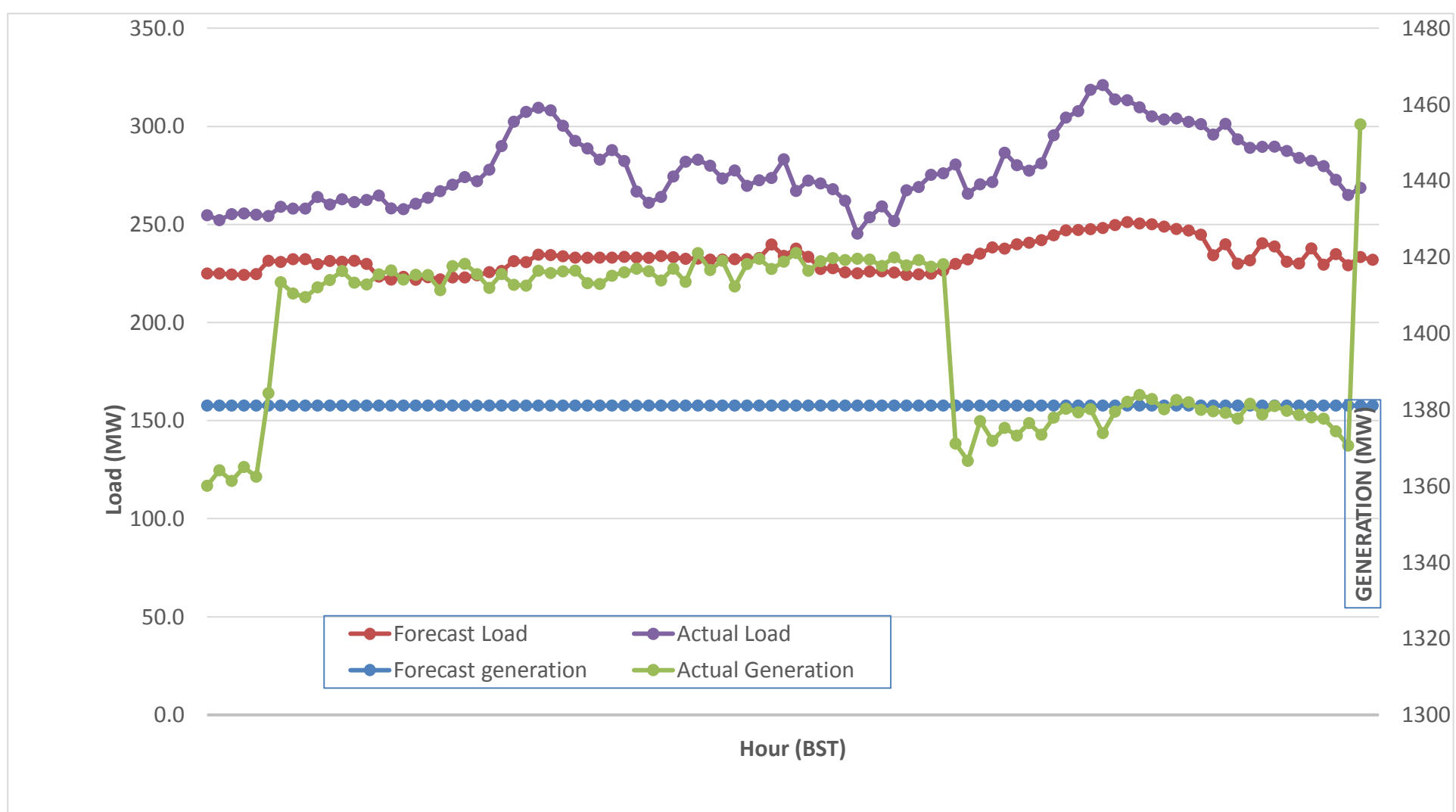
Bhutan Power Corporation Ltd.  
 Bhutan Power System Operator  
 Thimphu: Bhutan



Message No.: Enter your message number  
 From: Shift In-charge, Control Room

Date: 30-Sep-17  
 Time: 10:43

**Forecast Generation & Load with Actual Generation & Load (29-Sep-2017).**



Yours faithfully,

Sign:  
**Kinley Wangmo**

	<b>MW</b>
Peak Co-incident Generation(29-Sep-2017).	1454.81
Peak Co-incident Load(29-Sep-2017).	321.06

<b>Coincidental peak load of Day(Last year):</b>	
286.98 MW	29-Sep-16
<b>Maximum Load till date:</b>	
344.02 MW	18-Mar-17

Telephone: +975-02335631; Fax: +975-02335632; Email: bhutansystemoperator@bpc.bt; www.bpc.bt



འབྲུག་གློག་ལེ་ལས་འཛིན།

Bhutan Power Corporation Ltd.  
Bhutan Power System Operator  
Thimphu: Bhutan



Message No.: Enter your message number  
From: Shift In-charge, Control Room

Date: 30-Sep-17  
Time: 10:43

To  
Managing Director, BPC. Email: gemtshering@bpc.bt  
Director, O&MD, DGPC. Email: director.omid@drukgreen.com  
General Manager, TD, BPC. Email: thinleygyeltshen@bpc.bt  
General Manager, DCSD, BPC. Email: sandeprai@bpc.bt  
General Manager, BPSO, BPC. Email: ujjwaldahal@bpc.bt

Sub: Load Generation Balance Report of Today (30-Sep-2017).

Hours (BST)	Forecast		Actual	
	Generation	Load	Generation	Load
0:00	1354.4	232.7	1455.7	267.46
0:15	1354.4	233	1402.5	240.73
0:30	1354.4	232	1347.5	259.02
0:45	1354.4	233.4	1343.6	256.20
1:00	1354.4	232.8	1349.1	263.95
1:15	1354.4	237.9	1348.2	266.39
1:30	1354.4	238.7	1346.2	266.66
1:45	1354.4	239.1	1350.8	261.86
2:00	1354.4	239	1350.2	262.72
2:15	1354.4	235.8	1351.4	265.48
2:30	1354.4	236.6	1350.9	252.60
2:45	1354.4	237.4	1352.1	258.25
3:00	1354.4	237.9	1348.9	260.20
3:15	1354.4	235.7	1351.3	263.19
3:30	1354.4	231.9	1343.5	262.73
3:45	1354.4	230.3	1347.6	263.44
4:00	1354.4	230.9	1352.5	257.95
4:15	1354.4	228	1348.4	266.23
4:30	1354.4	230.3	1350.7	260.26
4:45	1354.4	231.3	1349.8	267.08
5:00	1354.4	232	1354.4	266.45
5:15	1354.4	233.3	1378.3	266.31
5:30	1354.4	234.8	1379.9	265.76
5:45	1354.4	237.3	1383.2	272.78
6:00	1354.4	241.6	1385.8	273.86
6:15	1354.4	248.6	1423.9	278.89
6:30	1354.4	248.1	1426.8	285.41
6:45	1354.4	251.5	1429.8	289.73
7:00	1354.4	250.4	1432.3	283.48
7:15	1354.4	248.4	1433.8	291.02
7:30	1354.4	246	1432.7	292.10
7:45	1354.4	244.9	1433.9	279.02
8:00	1354.4	243.6	1434.3	293.09
8:15	1354.4	242.8	1434.5	284.38
8:30	1354.4	243.1	1505.0	288.35
8:45	1354.4	240.3	1511.3	286.96
9:00	1354.4	242.5	1516.4	284.19

Coincidental peak load of Day(Last year):	
289.99 MW	30-Sep-17
258.23 MW	
344.02 MW	18-Mar-17

Yours faithfully,

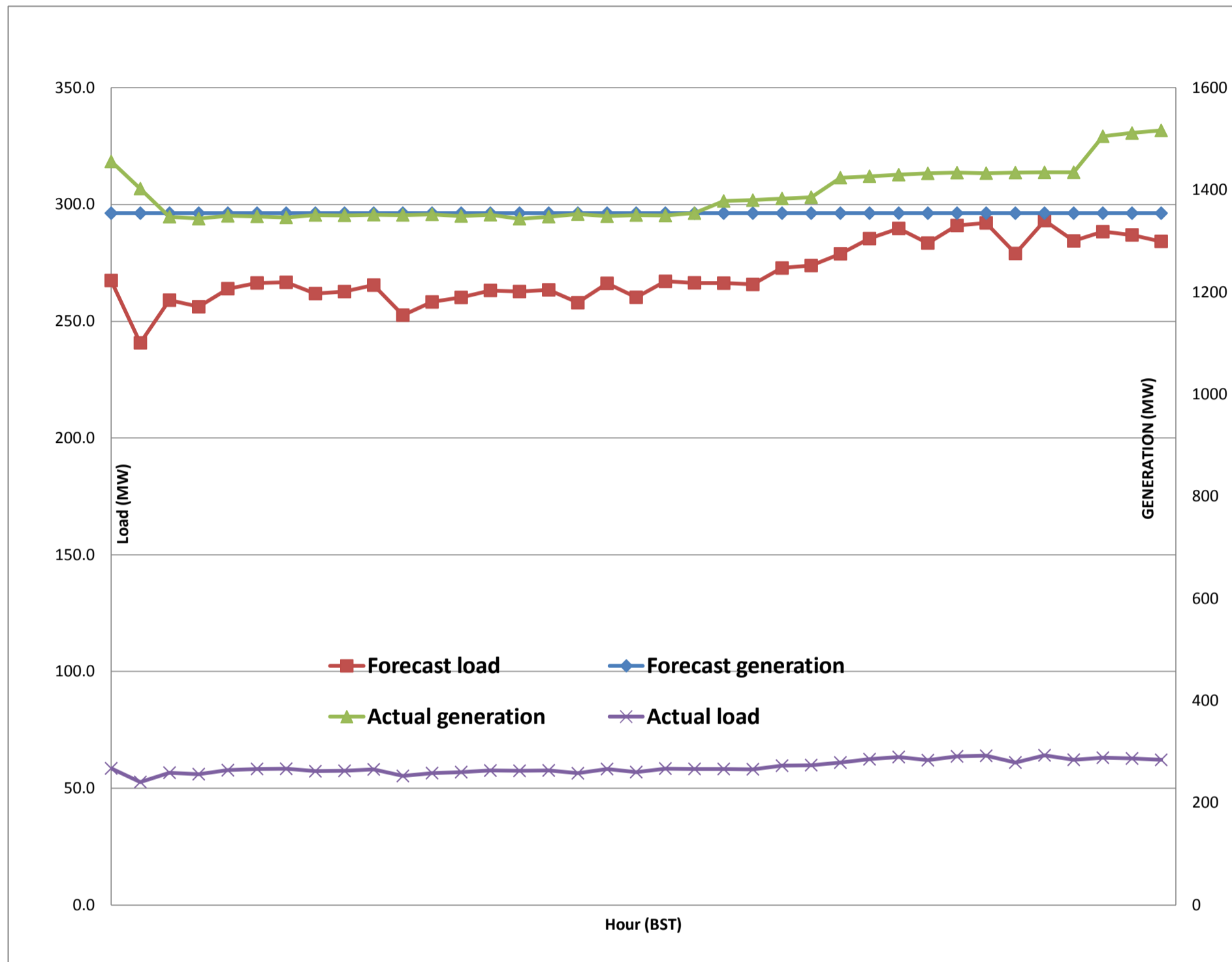
Sign:  
Kinley Wangmo



Message No.: Enter your message number  
 From: Shift In-charge, Control Room

Date: 30-Sep-17  
 Time: 10:43

Forecast Generation & Load with Actual Generation & Load of Today from 00:00hrs to 09:00hrs(30-Sep-2017).





འབྲུག་གྲོག་ལེ་ལས་འཛིན།  
**Bhutan Power Corporation Ltd.**  
**Bhutan Power System Operator**  
 Thimphu: Bhutan



**Message No.:** Enter your message number **Date:** 30-Sep-17  
**From:** Shift In-charge, Control Room **Time:** 10:43

**To**  
 Managing Director, BPC. Email: gemtshering@bpc.bt  
 Director, O&MD, DGPC. Email: director.umd@drukgreen.com  
 General Manager, TD, BPC. Email: ktobgye@bpc.bt  
 General Manager, BPSO, BPC. Email: ujjwaldahal@bpc.bt  
 Advisor, BPC. Email: bharattamang@bpc.bt

**Sub:** Load Generation Balance Report of Tomorrow (01-Oct-2017).

Hours (BST)	Forecast		Hours (BST)	Forecast	
	Generation	Load		Generation	Load
0:00	1572.8	238.50	12:00	1572.8	252.6
0:15	1572.8	237.60	12:15	1572.8	250.7
0:30	1572.8	236.50	12:30	1572.8	248.7
0:45	1572.8	237.60	12:45	1572.8	244.7
1:00	1572.8	236.30	13:00	1572.8	241.4
1:15	1572.8	243.20	13:15	1572.8	241.2
1:30	1572.8	244.80	13:30	1572.8	238.4
1:45	1572.8	241.70	13:45	1572.8	239
2:00	1572.8	244.30	14:00	1572.8	238.3
2:15	1572.8	241.60	14:15	1572.8	238.2
2:30	1572.8	242.20	14:30	1572.8	241.4
2:45	1572.8	244.10	14:45	1572.8	243.2
3:00	1572.8	244.00	15:00	1572.8	245.1
3:15	1572.8	242.80	15:15	1572.8	247.6
3:30	1572.8	239.60	15:30	1572.8	248.4
3:45	1572.8	237.20	15:45	1572.8	249.3
4:00	1572.8	238.20	16:00	1572.8	251.3
4:15	1572.8	236.20	16:15	1572.8	253.4
4:30	1572.8	238.90	16:30	1572.8	258.2
4:45	1572.8	240.20	16:45	1572.8	256.8
5:00	1572.8	242.40	17:00	1572.8	259.1
5:15	1572.8	243.20	17:15	1572.8	261.7
5:30	1572.8	243.20	17:30	1572.8	267.1
6:45	1572.8	247.20	17:45	1572.8	270
6:00	1572.8	254.70	18:00	1572.8	274.3
6:15	1572.8	262.70	18:15	1572.8	280.4
6:30	1572.8	263.70	18:30	1572.8	283.1
6:45	1572.8	266.60	18:45	1572.8	284.9
7:00	1572.8	265.40	19:00	1572.8	282.3
7:15	1572.8	261.00	19:15	1572.8	279.4
7:30	1572.8	259.40	19:30	1572.8	277.2
7:45	1572.8	256.70	19:45	1572.8	274.5
8:00	1572.8	255.80	20:00	1572.8	272.9
8:15	1572.8	252.60	20:15	1572.8	271.3
8:30	1572.8	252.80	20:30	1572.8	263.9
8:45	1572.8	242.10	20:45	1572.8	266.1
9:00	1572.8	247.90	21:00	1572.8	258.6
9:15	1572.8	244.50	21:15	1572.8	258.2
9:30	1572.8	252.60	21:30	1572.8	261.9
9:45	1572.8	252.60	21:45	1572.8	259.6
10:00	1572.8	252.40	22:00	1572.8	254
10:15	1572.8	252.40	22:15	1572.8	252.1
10:30	1572.8	251.50	22:30	1572.8	255.4
10:45	1572.8	251.30	22:45	1572.8	250.4
11:00	1572.8	250.40	23:00	1572.8	251.6
11:15	1572.8	250.70	23:15	1572.8	245.8
11:30	1572.8	256.90	23:30	1572.8	246.9
11:45	1572.8	253.20	23:45	1572.7	245.3

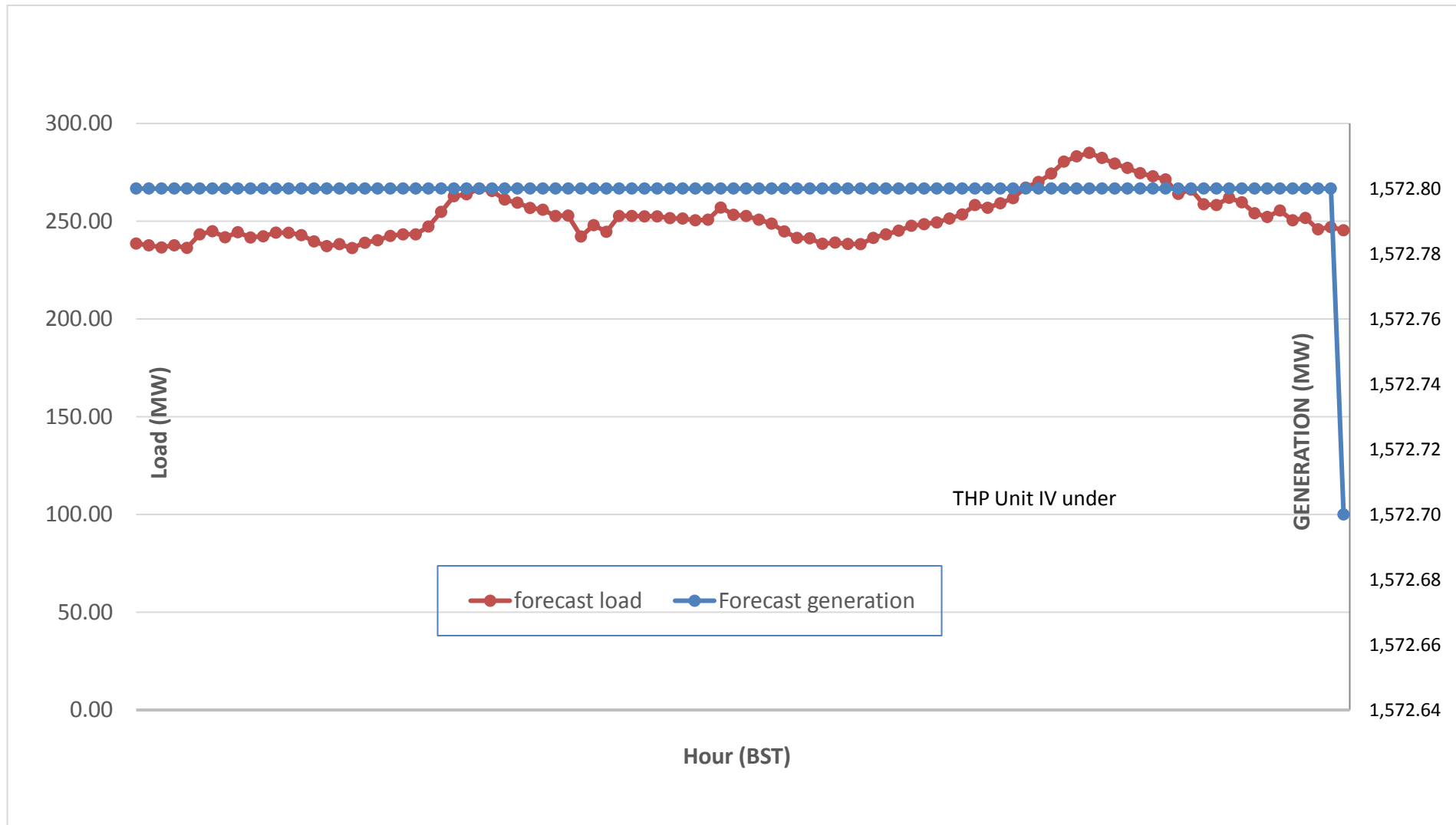
Yours faithfully,  
 Sign:  
 Kinley Wangmo



Message No.: Enter your message number  
 From: Shift In-charge, Control Room

Date: 30-Sep-17  
 Time: 10:43

**Scheduled Generation & Load Forecast for Tomorrow (01-Oct-2017).**



Yours faithfully,

Sign:  
**Kinley Wangmo**

	MW
Scheduled Peak Generation(01-Oct-2017).	376.90
Forecast Peak Load(01-Oct-2017).	300.60