



འབྲུག་གླིང་གི་ལམ་འཛིན།

Bhutan Power Corporation Ltd.
Bhutan Power System Operator
Thimphu: Bhutan



Message No.: Enter your message number
From: Shift In-charge, Control Room

Date: 31-Aug-17
Time: 10:47

To
Managing Director, BPC. Email: gemtshering@bpc.bt
Director, O&MD, DGPC. Email: director.omb@drukgreen.com
General Manager, TD, BPC. Email: ktobgye@bpc.bt
General Manager, DCSD, BPC. Email: sandeeprai@bpc.bt
General Manager, BPSO, BPC. Email: ujjwaldahal@bpc.bt

Sub: Load Generation Balance Report of Yesterday (30-Aug-2017).

Hours (BST)	Forecast		Actual		Hours (BST)	Forecast		Actual	
	Generation	Load	Generation	Load		Generation	Load	Generation	Load
0:00	1733.8	250.6	1729.3	255.64	12:00	1733.8	253.8	1733.7	265.52
0:15	1733.8	247.7	1736.2	244.80	12:15	1733.8	256.1	1733.3	258.94
0:30	1733.8	244.2	1672.2	217.22	12:30	1733.8	255.3	1732.4	264.94
0:45	1733.8	246.3	1669.7	224.20	12:45	1733.8	254.2	1737.1	258.80
1:00	1733.8	243.6	1673.8	202.68	13:00	1733.8	251	1735.5	256.02
1:15	1733.8	245.3	1701.3	244.44	13:15	1733.8	254.4	1732.9	256.72
1:30	1733.8	243	1702.7	244.18	13:30	1733.8	253.6	1737.8	259.80
1:45	1733.8	243.7	1720.0	246.11	13:45	1733.8	252	1737.3	256.14
2:00	1733.8	242.5	1727.8	242.10	14:00	1733.8	254	1738.1	250.25
2:15	1733.8	240.4	1736.9	241.98	14:15	1733.8	253.1	1733.6	258.09
2:30	1733.8	243.8	1738.9	240.92	14:30	1733.8	251.5	1735.8	256.31
2:45	1733.8	244.4	1735.3	241.21	14:45	1733.8	251	1735.7	250.70
3:00	1733.8	238.1	1737.3	239.32	15:00	1733.8	250.5	1736.5	253.76
3:15	1733.8	241.8	1740.2	238.82	15:15	1733.8	251.1	1736.9	257.44
3:30	1733.8	238.7	1735.4	244.91	15:30	1733.8	251	1735.4	263.32
3:45	1733.8	243.6	1736.8	241.33	15:45	1733.8	252.7	1732.6	254.43
4:00	1733.8	246.9	1733.3	249.59	16:00	1733.8	253	1734.2	258.52
4:15	1733.8	246.9	1729.5	251.55	16:15	1733.8	256.7	1735.5	260.19
4:30	1733.8	248.6	1730.9	248.63	16:30	1733.8	258.7	1735.6	258.81
4:45	1733.8	252.5	1733.5	251.52	16:45	1733.8	258.2	1736.0	267.81
5:00	1733.8	257.2	1735.6	253.36	17:00	1733.8	265.8	1737.2	252.68
5:15	1733.8	254.6	1736.0	249.82	17:15	1733.8	264.1	1736.3	255.12
5:30	1733.8	265.8	1731.3	257.92	17:30	1733.8	272.7	1736.5	259.34
6:45	1733.8	268.8	1730.8	270.50	17:45	1733.8	271.3	1736.9	262.53
6:00	1733.8	274.4	1736.1	276.92	18:00	1733.8	275.8	1736.2	267.81
6:15	1733.8	279.3	1733.0	287.33	18:15	1733.8	284.3	1735.0	274.01
6:30	1733.8	282.4	1734.2	294.63	18:30	1733.8	287.3	1736.9	280.89
6:45	1733.8	280.9	1737.2	292.50	18:45	1733.8	296.5	1734.0	300.47
7:00	1733.8	278	1735.1	284.86	19:00	1733.8	305.6	1734.9	304.49
7:15	1733.8	275.4	1734.3	277.52	19:15	1733.8	304.3	1737.3	310.20
7:30	1733.8	271.7	1733.8	274.44	19:30	1733.8	295.6	1735.1	302.84
7:45	1733.8	266.4	1732.0	273.80	19:45	1733.8	289.9	1735.6	290.24
8:00	1733.8	263	1737.0	265.72	20:00	1733.8	292.1	1734.0	283.18
8:15	1733.8	262.7	1736.0	269.15	20:15	1733.8	283.5	1733.9	282.08
8:30	1733.8	265	1732.3	273.09	20:30	1733.8	282.5	1735.2	283.26
8:45	1733.8	262.1	1730.6	274.52	20:45	1733.8	276	1730.8	286.96
9:00	1733.8	264.5	1734.8	269.99	21:00	1733.8	275.1	1735.0	278.80
9:15	1733.8	265.1	1734.6	261.58	21:15	1733.8	275.1	1732.7	276.06
9:30	1733.8	264.9	1738.3	273.43	21:30	1733.8	270.1	1733.5	273.22
9:45	1733.8	263.4	1737.2	271.41	21:45	1733.8	267.7	1737.4	270.48
10:00	1733.8	259.5	1731.9	262.44	22:00	1733.8	266.3	1737.4	262.13
10:15	1733.8	254.5	1738.7	264.51	22:15	1733.8	262.4	1733.5	267.34
10:30	1733.8	254.3	1736.2	258.44	22:30	1733.8	256.8	1734.5	265.83
10:45	1733.8	251.6	1734.4	263.61	22:45	1733.8	255.6	1734.1	264.59
11:00	1733.8	250.8	1737.5	260.77	23:00	1733.8	255.9	1737.6	262.81
11:15	1733.8	251.4	1736.8	264.36	23:15	1733.8	255.4	1735.9	260.87
11:30	1733.8	251	1737.3	255.86	23:30	1733.8	252.9	1734.5	261.12
11:45	1733.8	251.8	1734.1	259.06	23:45	1732.8	254.8	1736.3	265.61

Yours faithfully,

Sign:
Karma Choden

Coincidental peak load of Day(Last year):	
291.92 MW	30-Aug-16
Maximum Load till date:	
344.02 MW	18-Mar-17



འབྲུག་རྒྱལ་ཁོ་ལས་འཛིན།

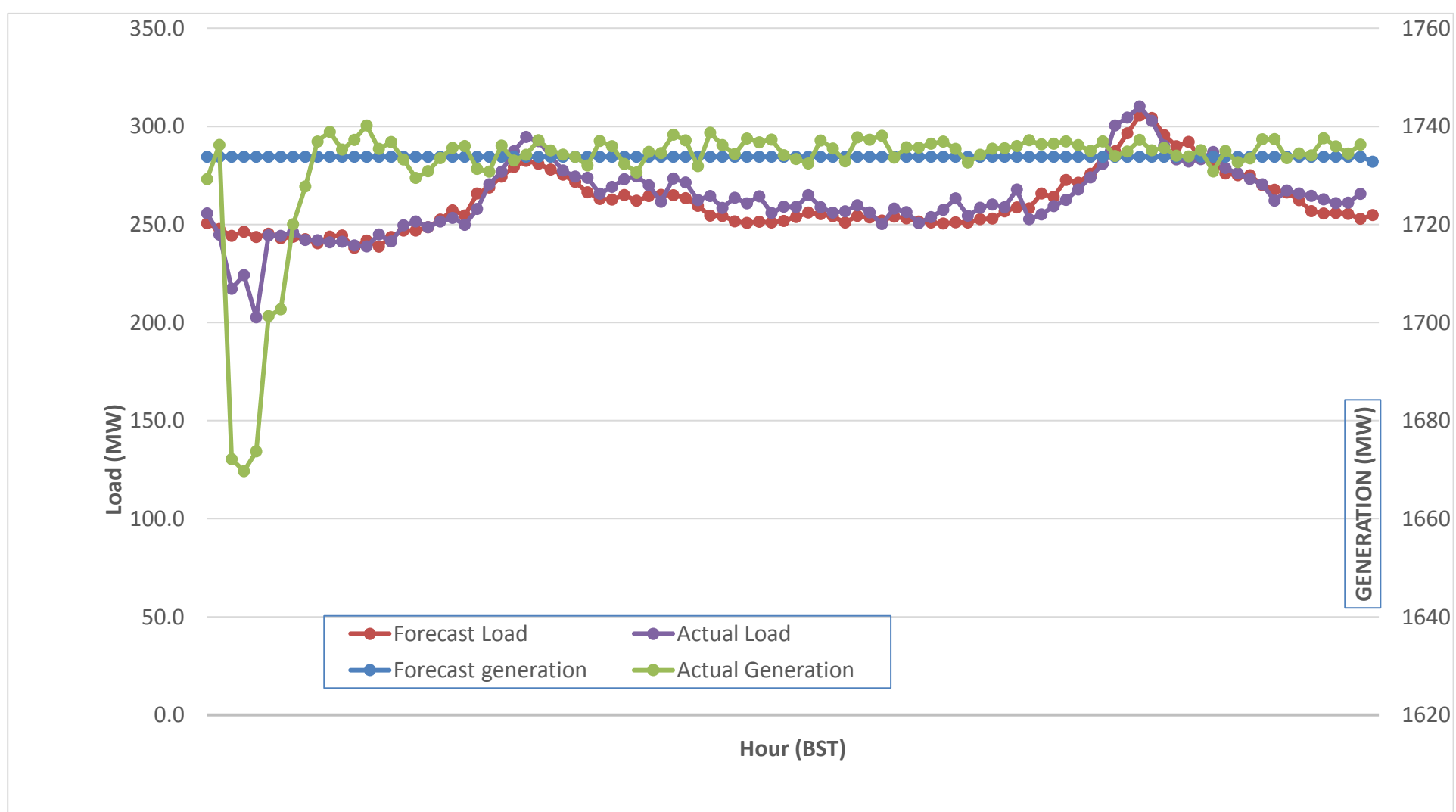
Bhutan Power Corporation Ltd.
 Bhutan Power System Operator
 Thimphu: Bhutan



Message No.: Enter your message number
 From: Shift In-charge, Control Room

Date: 31-Aug-17
 Time: 10:47

Forecast Generation & Load with Actual Generation & Load (30-Aug-2017).



Yours faithfully,

Sign:

Karma Choden

	MW
Peak Co-incident Generation(30-Aug-2017).	1740.19
Peak Co-incident Load(30-Aug-2017).	310.20

Coincidental peak load of Day(Last year):	
291.92 MW	30-Aug-16
Maximum Load till date:	
344.02 MW	18-Mar-17

Telephone: +975-02335631; Fax: +975-02335632; Email: bhutansystemoperator@bpc.bt; www.bpc.bt



འབྲུག་གློག་ལེ་ལས་འཛིན།

Bhutan Power Corporation Ltd.
Bhutan Power System Operator
Thimphu: Bhutan



Message No.: Enter your message number
From: Shift In-charge, Control Room

Date: 31-Aug-17
Time: 10:47

To

Managing Director, BPC. Email: gemtshering@bpc.bt
Director, O&MD, DGPC. Email: director.omb@drukgreen.com
General Manager, TD, BPC. Email: thinleygyeltshen@bpc.bt
General Manager, DCSD, BPC. Email: sandeprai@bpc.bt
General Manager, BPSO, BPC. Email: ujjwaldahal@bpc.bt

Sub:

Load Generation Balance Report of Today (31-Aug-2017).

Hours (BST)	Forecast		Actual	
	Generation	Load	Generation	Load
0:00	1735.2	253.5	1736.4	257.95
0:15	1735.2	252.2	1723.6	264.48
0:30	1735.2	247.6	1735.2	261.46
0:45	1735.2	250.4	1737.2	259.52
1:00	1735.2	246.3	1736.3	256.41
1:15	1735.2	247.4	1736.3	241.63
1:30	1735.2	247.3	1739.9	232.20
1:45	1735.2	247.3	1731.6	228.15
2:00	1735.2	246.5	1736.6	245.29
2:15	1735.2	246.7	1733.4	247.30
2:30	1735.2	248.5	1734.3	257.64
2:45	1735.2	248.1	1736.0	255.56
3:00	1735.2	243.6	1737.0	248.75
3:15	1735.2	245.1	1737.5	254.94
3:30	1735.2	244.5	1738.5	256.83
3:45	1735.2	246.6	1735.8	255.69
4:00	1735.2	248.5	1737.9	255.90
4:15	1735.2	247.1	1735.2	253.92
4:30	1735.2	249.4	1737.8	258.43
4:45	1735.2	252.5	1731.3	262.23
5:00	1735.2	255.4	1735.9	255.94
5:15	1735.2	256.9	1733.6	254.61
5:30	1735.2	264.5	1734.3	264.69
5:45	1735.2	269	1737.8	276.08
6:00	1735.2	277.3	1737.5	291.89
6:15	1735.2	281.8	1733.4	298.67
6:30	1735.2	282	1736.4	305.70
6:45	1735.2	283.3	1737.2	303.72
7:00	1735.2	279.4	1734.3	294.13
7:15	1735.2	275.5	1734.4	286.70
7:30	1735.2	273.3	1738.7	277.55
7:45	1735.2	270.1	1735.1	276.01
8:00	1735.2	267.9	1732.3	269.41
8:15	1735.2	268	1731.5	266.81
8:30	1735.2	269.6	1735.4	264.39
8:45	1735.2	267.4	1733.3	268.36
9:00	1735.2	266.9	1737.0	262.38

Coincidental peak load of Day(Last year):	
272.99 MW	31-Aug-17
258.23 MW	
344.02 MW	18-Mar-17

Yours faithfully,

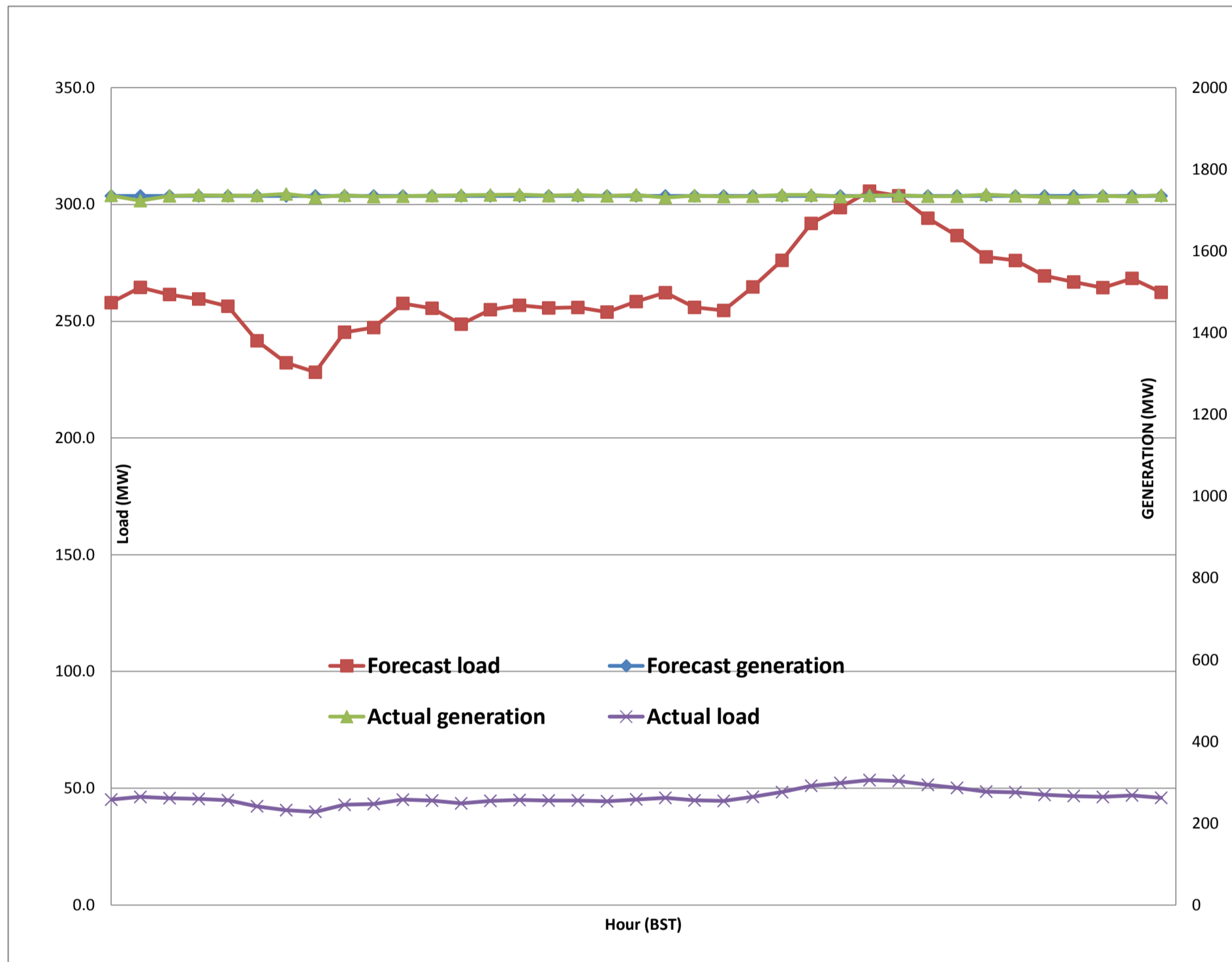
Sign:
Karma Choden



Message No.: Enter your message number
 From: Shift In-charge, Control Room

Date: 31-Aug-17
 Time: 10:47

Forecast Generation & Load with Actual Generation & Load of Today from 00:00hrs to 09:00hrs(31-Aug-2017).





འབྲུག་གྲོག་ལས་ཁུངས་ལཱ་རྒྱུ་རྒྱུ་།
Bhutan Power Corporation Ltd.
Bhutan Power System Operator
 Thimphu: Bhutan



Message No.: Enter your message number **Date:** 31-Aug-17
From: Shift In-charge, Control Room **Time:** 10:47

To
 Managing Director, BPC. Email: gemtshering@bpc.bt
 Director, O&MD, DGPC. Email: director.umd@drukgreen.com
 General Manager, TD, BPC. Email: ktobgye@bpc.bt
 General Manager, BPSO, BPC. Email: ujjwaldahal@bpc.bt
 Advisor, BPC. Email: bharattamang@bpc.bt

Sub: Load Generation Balance Report of Tomorrow (01-Sep-2017).

Hours (BST)	Forecast		Hours (BST)	Forecast	
	Generation	Load		Generation	Load
0:00	1738.3	255.20	12:00	1741.3	246.9
0:15	1738.3	249.00	12:15	1741.3	248.3
0:30	1738.3	238.30	12:30	1741.3	248.8
0:45	1741.3	245.20	12:45	1741.3	244.4
1:00	1741.3	241.90	13:00	1741.3	242.5
1:15	1741.3	245.80	13:15	1741.3	245
1:30	1741.3	245.40	13:30	1741.3	245.1
1:45	1741.3	245.50	13:45	1741.3	242.6
2:00	1741.3	245.80	14:00	1741.3	244
2:15	1741.3	246.30	14:15	1741.3	243.5
2:30	1741.3	246.50	14:30	1741.3	242.8
2:45	1741.3	246.20	14:45	1741.3	243.8
3:00	1741.3	242.60	15:00	1741.3	244.9
3:15	1741.3	244.70	15:15	1741.3	246.7
3:30	1741.3	244.70	15:30	1741.3	246.7
3:45	1741.3	246.30	15:45	1741.3	248
4:00	1741.3	248.50	16:00	1741.3	251.3
4:15	1741.3	248.50	16:15	1741.3	253.4
4:30	1741.3	248.90	16:30	1741.3	256.2
4:45	1741.3	252.80	16:45	1741.3	257.9
5:00	1741.3	253.60	17:00	1741.3	259.6
5:15	1741.3	256.60	17:15	1741.3	259.9
5:30	1741.3	264.50	17:30	1741.3	265.4
6:45	1741.3	268.90	17:45	1741.3	266.3
6:00	1741.3	277.70	18:00	1741.3	270.9
6:15	1741.3	283.80	18:15	1741.3	276.7
6:30	1741.3	284.30	18:30	1741.3	283
6:45	1741.3	285.40	18:45	1741.3	295
7:00	1741.3	280.90	19:00	1741.3	305.4
7:15	1741.3	277.00	19:15	1741.3	305.9
7:30	1741.3	274.70	19:30	1741.3	301
7:45	1741.3	272.00	19:45	1741.3	292.6
8:00	1741.3	268.50	20:00	1741.3	289.1
8:15	1741.3	268.60	20:15	1741.3	284.9
8:30	1741.3	271.10	20:30	1741.3	285.3
8:45	1741.3	268.90	20:45	1741.3	278.9
9:00	1741.3	266.90	21:00	1741.3	277.7
9:15	1741.3	267.20	21:15	1741.3	275.6
9:30	1741.3	267.50	21:30	1741.3	272.7
9:45	1741.3	263.80	21:45	1741.3	269.1
10:00	1741.3	258.60	22:00	1741.3	266.6
10:15	1741.3	253.30	22:15	1741.3	266.2
10:30	1741.3	250.20	22:30	1741.3	261.5
10:45	1741.3	246.80	22:45	1741.3	258.9
11:00	1741.3	246.30	23:00	1741.3	258.6
11:15	1741.3	247.10	23:15	1741.3	259.8
11:30	1741.3	246.30	23:30	1741.3	257.6
11:45	1741.3	247.60	23:45	1741.3	259.9

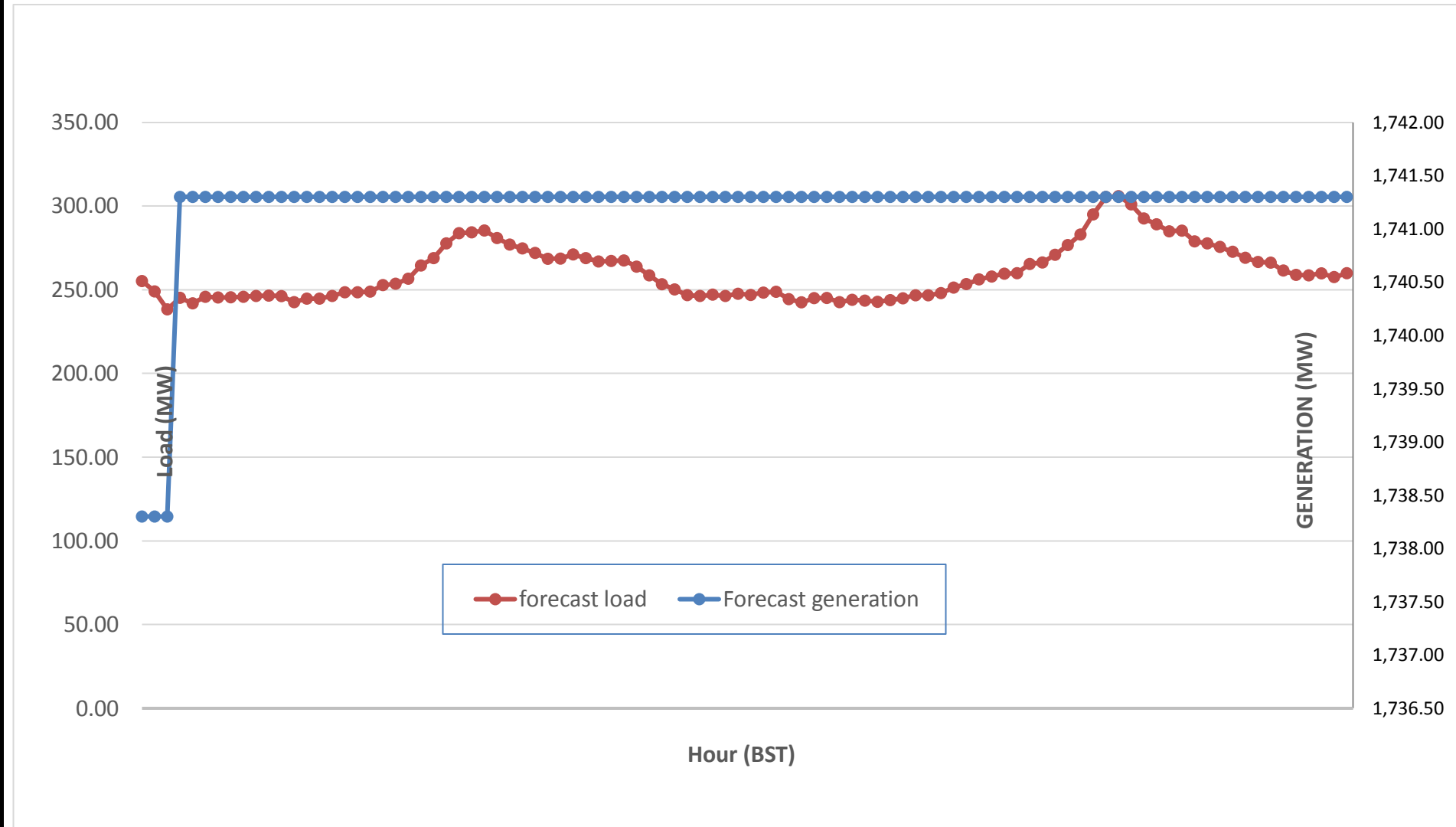
Yours faithfully,
 Sign:
 Karma Choden



Message No.: Enter your message number
 From: Shift In-charge, Control Room

Date: 31-Aug-17
 Time: 10:47

Scheduled Generation & Load Forecast for Tomorrow (01-Sep-2017).



Yours faithfully,

Sign:
Karma Choden

	MW
Scheduled Peak Generation(01-Sep-2017).	376.90
Forecast Peak Load(01-Sep-2017).	300.60