



འབྲུག་གྲོག་མེ་ལས་འཛིན།

Bhutan Power Corporation Ltd.  
 Bhutan Power System Operator  
 Thimphu: Bhutan



Message No.: Enter your message number  
 From: Shift In-charge, Control Room

Date: 30-Aug-17  
 Time: 9:59

To  
 Managing Director, BPC. Email: gemtshering@bpc.bt  
 Director, O&MD, DGPC. Email: director.omb@drukgreen.com  
 General Manager, TD, BPC. Email: ktobgye@bpc.bt  
 General Manager, DCSD, BPC. Email: sandeeprai@bpc.bt  
 General Manager, BPSO, BPC. Email: ujjwaldahal@bpc.bt

Sub: Load Generation Balance Report of Yesterday (29-Aug-2017).

Hours (BST)	Forecast		Actual		Hours (BST)	Forecast		Actual	
	Generation	Load	Generation	Load		Generation	Load	Generation	Load
0:00	1744	249.8	1738.8	264.68	12:00	1744	253.4	1735.4	187.25
0:15	1744	246.8	1732.7	266.66	12:15	1744	255.7	1736.5	187.43
0:30	1743.4	243.4	1736.0	262.24	12:30	1744	255	1732.1	183.85
0:45	1744	245.6	1736.4	262.32	12:45	1744	253.7	1733.2	179.71
1:00	1742.8	242.8	1734.9	266.06	13:00	1744	250.5	1735.3	177.46
1:15	1744	244.7	1735.8	259.77	13:15	1744	253.9	1732.3	179.79
1:30	1742.5	242.5	1738.2	257.55	13:30	1744	253.3	1732.1	183.88
1:45	1743.2	243.2	1736.1	255.72	13:45	1744	251.8	1735.4	183.14
2:00	1741.9	241.9	1735.5	260.02	14:00	1744	253.7	1731.9	176.11
2:15	1739.9	239.9	1735.2	255.63	14:15	1744	253	1734.9	183.15
2:30	1743.4	243.4	1735.3	256.48	14:30	1744	251.2	1732.3	189.38
2:45	1743.9	243.9	1736.7	261.45	14:45	1744	250.6	1736.5	190.54
3:00	1737.4	237.4	1735.3	258.38	15:00	1744	250.3	1734.6	186.47
3:15	1741.2	241.2	1735.5	259.63	15:15	1744	250.7	1737.2	195.20
3:30	1738.1	238.1	1737.3	257.48	15:30	1744	250.7	1733.0	202.87
3:45	1743	243	1734.8	250.80	15:45	1744	252.4	1734.1	207.43
4:00	1744	246.3	1736.3	248.76	16:00	1744	252.7	1733.5	209.80
4:15	1744	246.3	1733.1	248.98	16:15	1744	256.1	1734.7	205.94
4:30	1744	248.2	1735.0	251.04	16:30	1744	258.2	1731.9	225.69
4:45	1744	252.1	1736.6	253.43	16:45	1744	257.7	1733.3	230.84
5:00	1744	257	1735.8	249.85	17:00	1744	265.2	1732.7	225.32
5:15	1744	254.2	1736.4	257.59	17:15	1744	263.7	1735.8	226.94
5:30	1744	265.6	1733.8	265.31	17:30	1744	272.3	1735.1	236.38
6:45	1744	268	1734.3	270.27	17:45	1744	270.7	1736.8	233.37
6:00	1744	273.9	1733.1	287.63	18:00	1744	275.5	1735.6	242.18
6:15	1744	278.4	1735.5	296.35	18:15	1744	283.7	1735.3	239.27
6:30	1744	281.7	1733.8	279.45	18:30	1744	286.6	1733.4	252.79
6:45	1744	280.2	1734.8	289.95	18:45	1744	295.7	1736.8	271.42
7:00	1744	277.6	1736.9	288.17	19:00	1744	304.6	1731.7	293.02
7:15	1744	274.9	1736.6	271.27	19:15	1744	303.3	1733.8	287.59
7:30	1744	271.4	1734.0	271.38	19:30	1744	294.3	1733.3	291.55
7:45	1744	266	1736.4	271.26	19:45	1744	288.8	1735.0	287.85
8:00	1744	262.7	1735.8	270.16	20:00	1744	291	1735.9	278.23
8:15	1744	262.7	1736.5	274.14	20:15	1744	282.3	1735.3	289.32
8:30	1744	264.9	1734.7	272.03	20:30	1744	281.2	1738.3	295.76
8:45	1744	262	1548.4	269.11	20:45	1744	274.6	1737.4	273.93
9:00	1744	264.4	1548.8	266.45	21:00	1744	273.7	1738.5	273.37
9:15	1744	265.1	1547.7	267.62	21:15	1744	273.8	1737.4	267.20
9:30	1744	264.8	1733.3	262.05	21:30	1744	268.9	1736.4	255.39
9:45	1744	263.3	1732.3	257.07	21:45	1744	266.6	1735.7	262.16
10:00	1744	259.3	1736.5	227.50	22:00	1744	265.1	1739.1	260.52
10:15	1744	254.3	1735.1	227.00	22:15	1744	261.3	1736.3	264.17
10:30	1744	254.4	1734.8	196.05	22:30	1744	255.9	1736.4	264.08
10:45	1744	251.3	1733.3	193.30	22:45	1744	254.8	1736.5	261.98
11:00	1744	250.5	1735.0	192.44	23:00	1744	255	1733.2	256.24
11:15	1744	251.1	1734.3	183.19	23:15	1744	254.5	1737.4	261.03
11:30	1744	250.7	1734.1	184.76	23:30	1744	251.9	1738.8	259.27
11:45	1744	251.4	1736.9	194.78	23:45	1744	253.9	1736.6	257.51

Yours faithfully,

Sign:  
 Kinley Wangmo

Coincidental peak load of Day(Last year):	
282.34 MW	29-Aug-16
Maximum Load till date:	
344.02 MW	18-Mar-17



འབྲུག་རྒྱལ་ཁོ་ལས་འཛིན།

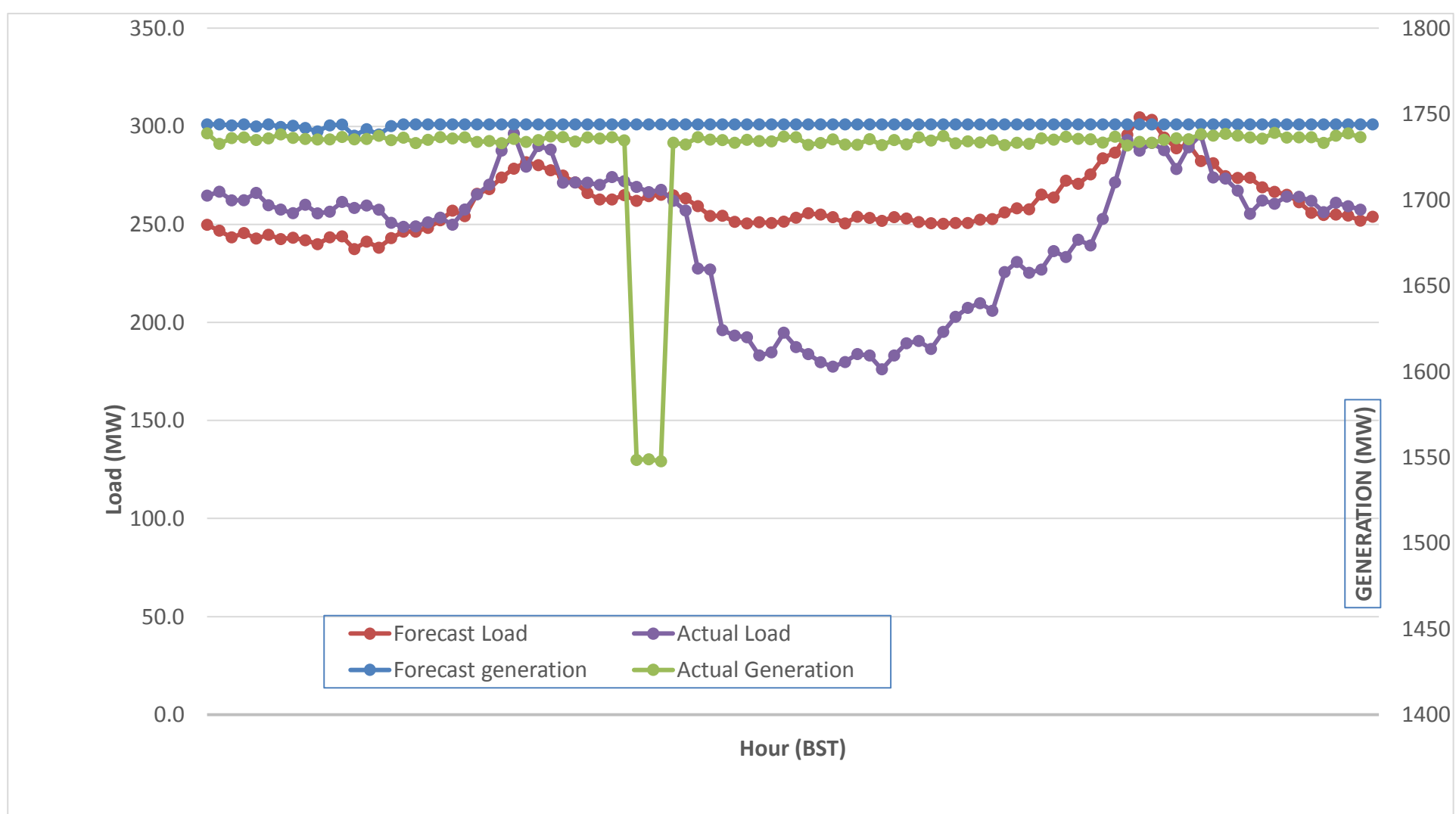
Bhutan Power Corporation Ltd.  
 Bhutan Power System Operator  
 Thimphu: Bhutan



Message No.: Enter your message number  
 From: Shift In-charge, Control Room

Date: 30-Aug-17  
 Time: 9:59

Forecast Generation & Load with Actual Generation & Load (29-Aug-2017).



Yours faithfully,

Sign:  
**Kinley Wangmo**

	MW
Peak Co-incident Generation(29-Aug-2017).	1739.06
Peak Co-incident Load(29-Aug-2017).	296.35

Coincidental peak load of Day(Last year):	
282.34 MW	29-Aug-16
Maximum Load till date:	
344.02 MW	18-Mar-17

Telephone: +975-02335631; Fax: +975-02335632; Email: bhutansystemoperator@bpc.bt; www.bpc.bt



འབྲུག་གྲོག་མེ་ལས་འཛིན།

Bhutan Power Corporation Ltd.  
Bhutan Power System Operator  
Thimphu: Bhutan



Message Enter your message number  
From: Shift In-charge, Control Room

Date: 30-Aug-17  
Time: 9:59

To  
Managing Director, BPC. Email: gemtsShering@bpc.bt  
Director, O&MD, DGPC. Email: director.umd@drukgreen.com  
General Manager, TD, BPC. Email: thinleygyeltshen@bpc.bt  
General Manager, DCSD, BPC. Email: sandeeprai@bpc.bt  
General Manager, BPSO, BPC. Email: ujjwaldahal@bpc.bt

Sub: Load Generation Balance Report of Today (28-Aug-2017).

Hours (BST)	Forecast		Actual	
	Generation	Load	Generation	Load
0:00	1733.8	250.6	1729.3	255.64
0:15	1733.8	247.7	1736.2	244.80
0:30	1733.8	244.2	1672.2	217.22
0:45	1733.8	246.3	1669.7	224.20
1:00	1733.8	243.6	1673.8	202.68
1:15	1733.8	245.3	1701.3	244.44
1:30	1733.8	243	1702.7	244.18
1:45	1733.8	243.7	1720.0	246.11
2:00	1733.8	242.5	1727.8	242.10
2:15	1733.8	240.4	1736.9	241.98
2:30	1733.8	243.8	1738.9	240.92
2:45	1733.8	244.4	1735.3	241.21
3:00	1733.8	238.1	1737.3	239.32
3:15	1733.8	241.8	1740.2	238.82
3:30	1733.8	238.7	1735.4	244.91
3:45	1733.8	243.6	1736.8	241.33
4:00	1733.8	246.9	1733.3	249.59
4:15	1733.8	246.9	1729.5	251.55
4:30	1733.8	248.6	1730.9	248.63
4:45	1733.8	252.5	1733.5	251.52
5:00	1733.8	257.2	1735.6	253.36
5:15	1733.8	254.6	1736.0	249.82
5:30	1733.8	265.8	1731.3	257.92
5:45	1733.8	268.8	1730.8	270.50
6:00	1733.8	274.4	1736.1	276.92
6:15	1733.8	279.3	1733.0	287.33
6:30	1733.8	282.4	1734.2	294.63
6:45	1733.8	280.9	1737.2	292.50
7:00	1733.8	278	1735.1	284.86
7:15	1733.8	275.4	1734.3	277.52
7:30	1733.8	271.7	1733.8	274.44
7:45	1733.8	266.4	1732.0	273.80
8:00	1733.8	263	1737.0	265.72
8:15	1733.8	262.7	1736.0	269.15
8:30	1733.8	265	1732.3	273.09
8:45	1733.8	262.1	1730.6	274.52
9:00	1733.8	264.5	1734.8	269.99

Coincidental peak load of Day(Last year):	
278.74	30-Aug-17

Maximum Load till date:	
344.02 MW	18-Mar-17

Yours faithfully,

Sign:  
Kinley Wangmo

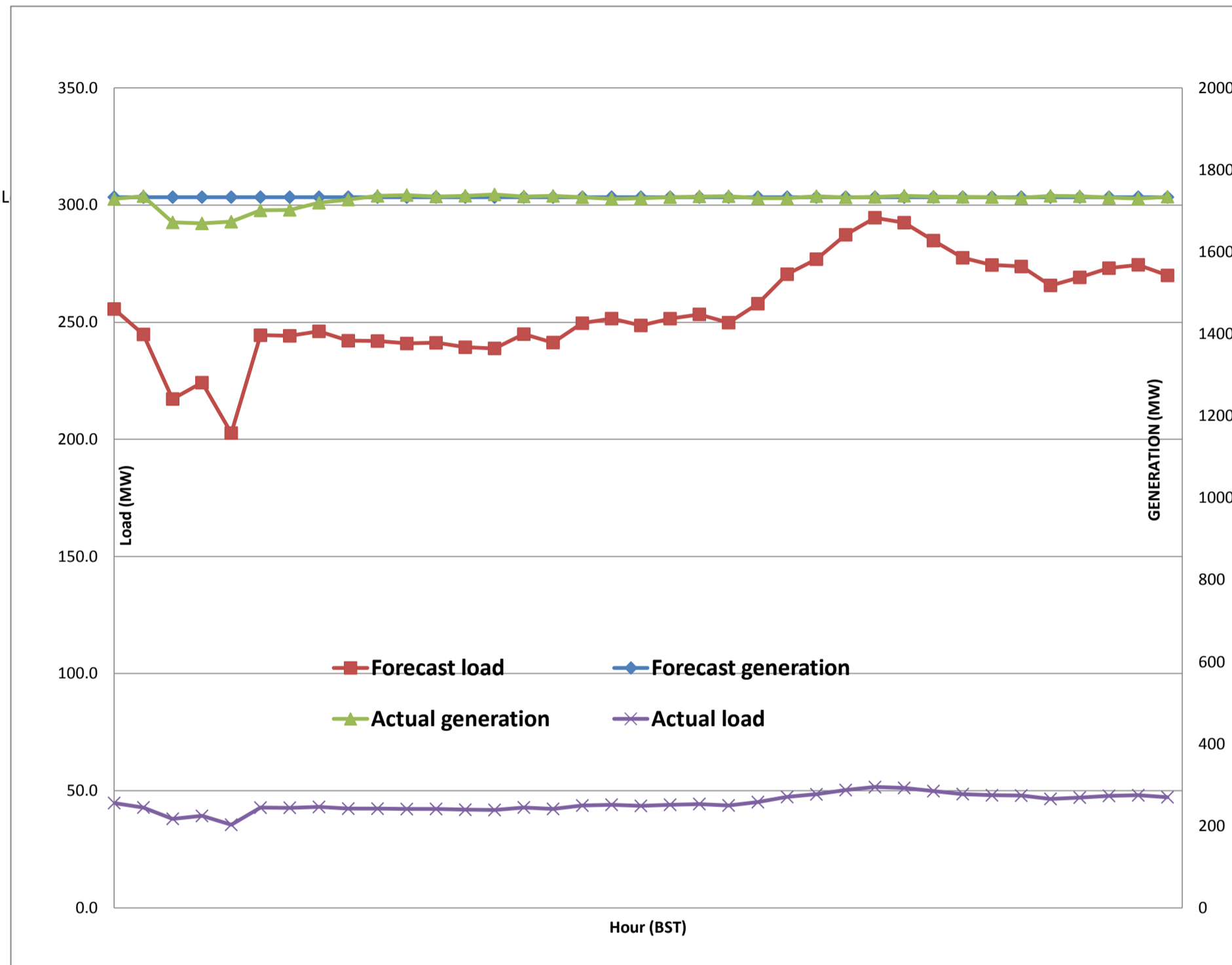
Telephone: +975-02335631; Fax: +975-02335632; Email: bhutansystemoperator@bpc.bt; www.bpc.bt



Message No.: Enter your message number  
 From: Shift In-charge, Control Room

8/30/2017 9:59 30-Aug-17  
 8/30/2017 9:59 9:59

Forecast Generation & Load with Actual Generation & Load of Today from 00:00hrs to 09:00hrs(30-Aug-2017).





**Message No.:** Enter your message number **Date:** 30-Aug-17  
**From:** Shift In-charge, Control Room **Time:** 9:59

###  
 ###

**To**  
 Managing Director, BPC. Email: gemtshering@bpc.bt  
 Director, O&MD, DGPC. Email: director.umd@drukgreen.com  
 General Manager, TD, BPC. Email: ktobgye@bpc.bt  
 General Manager, BPSO, BPC. Email: ujjwaldahal@bpc.bt  
 Advisor, BPC. Email: bharattamang@bpc.bt

**Sub:** Load Generation Balance Report of Tomorrow (31-Aug-2017).

Hours (BST)	Forecast		Hours (BST)	Forecast	
	Generation	Load		Generation	Load
0:00	1735.2	253.50	12:00	1735.2	242.2
0:15	1735.2	252.20	12:15	1735.2	244.3
0:30	1735.2	247.60	12:30	1735.2	243.9
0:45	1735.2	250.40	12:45	1735.2	240.6
1:00	1735.2	246.30	13:00	1735.2	239.7
1:15	1735.2	247.40	13:15	1735.2	240.5
1:30	1735.2	247.30	13:30	1735.2	241.2
1:45	1735.2	247.30	13:45	1735.2	239
2:00	1735.2	246.50	14:00	1735.2	241.6
2:15	1735.2	246.70	14:15	1735.2	239.2
2:30	1735.2	248.50	14:30	1735.2	240.6
2:45	1735.2	248.10	14:45	1735.2	241.6
3:00	1735.2	243.60	15:00	1735.2	241.8
3:15	1735.2	245.10	15:15	1735.2	241.6
3:30	1735.2	244.50	15:30	1735.2	243.4
3:45	1735.2	246.60	15:45	1735.2	245.5
4:00	1735.2	248.50	16:00	1735.2	247.4
4:15	1735.2	247.10	16:15	1735.2	250.5
4:30	1735.2	249.40	16:30	1735.2	253.8
4:45	1735.2	252.50	16:45	1735.2	254.8
5:00	1735.2	255.40	17:00	1735.2	259.3
5:15	1735.2	256.90	17:15	1735.2	260.1
5:30	1735.2	264.50	17:30	1735.2	266.2
6:45	1735.2	269.00	17:45	1735.2	265.8
6:00	1735.2	277.30	18:00	1735.2	270.9
6:15	1735.2	281.80	18:15	1735.2	276.5
6:30	1735.2	282.00	18:30	1735.2	282.9
6:45	1735.2	283.30	18:45	1735.2	294.2
7:00	1735.2	279.40	19:00	1735.2	304.4
7:15	1735.2	275.50	19:15	1735.2	303.6
7:30	1735.2	273.30	19:30	1735.2	298.4
7:45	1735.2	270.10	19:45	1735.2	292.3
8:00	1735.2	267.90	20:00	1735.2	291.8
8:15	1735.2	268.00	20:15	1735.2	287
8:30	1735.2	269.60	20:30	1735.2	286.6
8:45	1735.2	267.40	20:45	1735.2	279
9:00	1735.2	266.90	21:00	1735.2	277.9
9:15	1735.2	266.80	21:15	1735.2	278
9:30	1735.2	264.60	21:30	1735.2	271.9
9:45	1735.2	261.80	21:45	1735.2	270.6
10:00	1735.2	255.50	22:00	1735.2	267.5
10:15	1735.2	250.50	22:15	1735.2	265.2
10:30	1735.2	245.90	22:30	1735.2	261.4
10:45	1735.2	242.00	22:45	1735.2	259.6
11:00	1735.2	243.20	23:00	1735.2	257.4
11:15	1735.2	241.00	23:15	1735.2	258.6
11:30	1735.2	242.60	23:30	1735.2	256.4
11:45	1735.2	243.20	23:45	1734.8	258

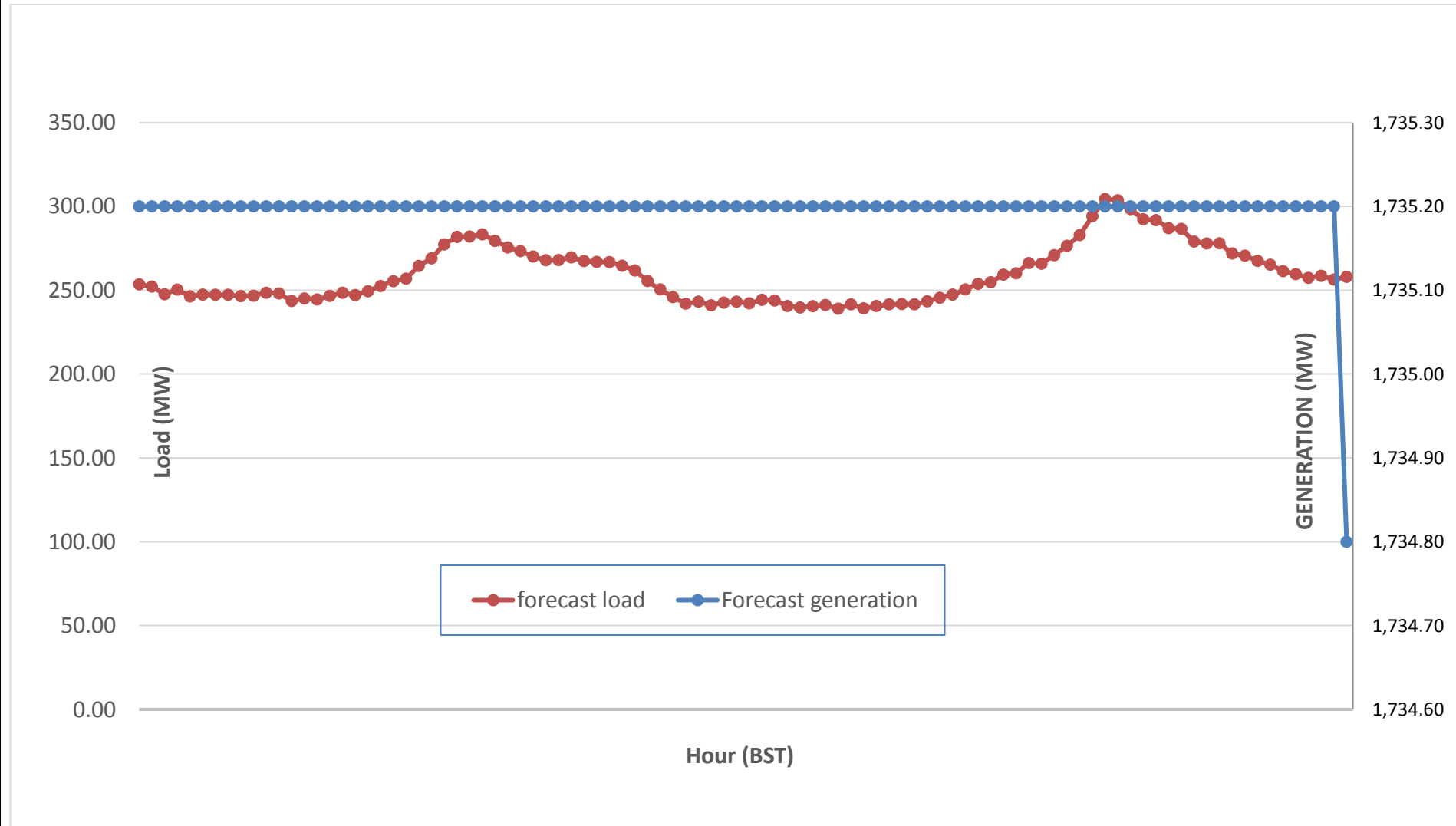
Yours faithfully,  
 Sign:  
 Kinley Wangmo



Message No.: Enter your message number  
 From: Shift In-charge, Control Room

Date: 30-Aug-17  
 Time: 9:59

**Scheduled Generation & Load Forecast for Tomorrow (31-Aug-2017).**



Yours faithfully,

Sign:  
**Kinley Wangmo**

	MW
Scheduled Peak Generation(31-Aug-2017).	376.90
Forecast Peak Load(31-Aug-2017).	300.60