



འབྲུག་གླིང་མེ་ལམ་འཛིན།

Bhutan Power Corporation Ltd.
Bhutan Power System Operator
Thimphu: Bhutan



Message No.: Enter your message number
From: Shift In-charge, Control Room

Date: 27-Aug-17
Time: 10:44

To
Managing Director, BPC. Email: gemtshering@bpc.bt
Director, O&MD, DGPC. Email: director.umd@drukgreen.com
General Manager, TD, BPC. Email: ktobgye@bpc.bt
General Manager, DCSD, BPC. Email: sandeeprai@bpc.bt
General Manager, BPSO, BPC. Email: ujjwaldahal@bpc.bt

Sub: Load Generation Balance Report of Yesterday (26-Aug-2017).

Hours (BST)	Forecast		Actual		Hours (BST)	Forecast		Actual	
	Generation	Load	Generation	Load		Generation	Load	Generation	Load
0:00	1731.5	257	1671.1	238.83	12:00	1731.5	257	1669.1	243.61
0:15	1731.5	253	1673.2	236.67	12:15	1731.5	256.8	1670.3	237.16
0:30	1731.5	247.7	1667.5	243.67	12:30	1731.5	254.8	1668.4	234.66
0:45	1731.5	251.1	1670.9	241.95	12:45	1731.5	252.1	1673.3	237.57
1:00	1731.5	249.7	1673.3	241.90	13:00	1731.5	247.9	1671.0	233.92
1:15	1731.5	248.2	1674.1	241.77	13:15	1731.5	253.5	1669.4	241.36
1:30	1731.5	247.1	1673.7	243.15	13:30	1731.5	244.5	1670.2	247.59
1:45	1731.5	246.5	1671.1	243.87	13:45	1731.5	246.3	1673.7	248.11
2:00	1731.5	249.4	1669.4	226.43	14:00	1731.5	248.6	1675.2	248.03
2:15	1731.5	249.1	1610.4	203.76	14:15	1731.5	246.8	1671.8	244.86
2:30	1731.5	251	1634.5	218.45	14:30	1731.5	250	1672.0	248.46
2:45	1731.5	250.9	1641.3	231.45	14:45	1731.5	248.5	1673.7	245.37
3:00	1731.5	251.7	1268.6	194.28	15:00	1731.5	247.5	1670.2	245.96
3:15	1731.5	250.4	1294.4	205.21	15:15	1731.5	249.8	1672.7	247.39
3:30	1731.5	248.9	1451.3	212.08	15:30	1731.5	246.9	1668.6	250.41
3:45	1731.5	250	1454.9	228.15	15:45	1731.5	250	1670.4	250.66
4:00	1731.5	249	1436.8	241.38	16:00	1731.5	252.6	1670.8	248.07
4:15	1731.5	250.6	1485.7	242.73	16:15	1731.5	260.2	1671.3	250.05
4:30	1731.5	249.8	1488.7	245.69	16:30	1731.5	259.1	1670.8	251.20
4:45	1731.5	253.7	1676.6	245.07	16:45	1731.5	271.7	1675.6	242.72
5:00	1731.5	256.6	1671.8	242.11	17:00	1731.5	274.8	1671.9	248.00
5:15	1731.5	261.5	1671.7	245.72	17:15	1731.5	264	1673.0	256.72
5:30	1731.5	266	1671.1	250.81	17:30	1731.5	275.6	1673.2	256.97
6:45	1731.5	273.8	1671.6	262.74	17:45	1731.5	271.1	1672.4	270.84
6:00	1731.5	279.6	1672.2	264.77	18:00	1731.5	272.1	1671.6	272.27
6:15	1731.5	286.4	1672.9	275.17	18:15	1731.5	279.2	1672.8	280.95
6:30	1731.5	288.3	1669.1	277.01	18:30	1731.5	278.2	1675.8	281.45
6:45	1731.5	284.6	1676.2	273.64	18:45	1731.5	288.7	1487.4	288.03
7:00	1731.5	281.4	1673.5	277.96	19:00	1731.5	305.2	1487.0	292.37
7:15	1731.5	278.6	1672.5	274.13	19:15	1731.5	299.3	1654.0	295.24
7:30	1731.5	272.5	1672.2	258.18	19:30	1731.5	294.8	1672.6	295.33
7:45	1731.5	269.5	1673.6	266.84	19:45	1731.5	294.3	1673.8	304.89
8:00	1731.5	265.6	1669.5	264.27	20:00	1731.5	294.9	1656.3	270.02
8:15	1731.5	263	1673.5	262.63	20:15	1731.5	283.8	1650.5	272.63
8:30	1731.5	265.1	1672.0	266.30	20:30	1731.5	279.8	1653.2	271.69
8:45	1731.5	263.3	1673.5	265.11	20:45	1731.5	277.8	1660.0	265.90
9:00	1731.5	265.9	1675.7	266.21	21:00	1731.5	277.6	1657.3	268.62
9:15	1731.5	266.9	1489.8	264.14	21:15	1731.5	274.8	1656.3	272.14
9:30	1731.5	264.5	1669.5	264.53	21:30	1731.5	269.9	1656.1	277.99
9:45	1731.5	260.4	1667.5	260.98	21:45	1731.5	265.6	1654.7	275.88
10:00	1731.5	262	1669.7	256.41	22:00	1731.5	262.4	1659.4	267.75
10:15	1731.5	248.9	1672.4	249.19	22:15	1731.5	258.4	1671.9	265.84
10:30	1731.5	248.6	1672.3	247.88	22:30	1731.5	257.9	1678.0	255.40
10:45	1731.5	251.2	1674.4	240.75	22:45	1731.5	254.3	1675.9	250.48
11:00	1731.5	253.8	1672.8	242.55	23:00	1731.5	253.1	1673.0	253.98
11:15	1731.5	252.8	1671.1	247.03	23:15	1731.5	254.4	1677.5	261.50
11:30	1731.5	253.5	1668.5	252.09	23:30	1731.5	250.8	1656.3	260.92
11:45	1731.5	255.3	1670.1	256.80	23:45	1731.5	253.3	1674.7	263.56

Yours faithfully,

Sign:
Tshering Yangzom

Coincidental peak load of Day(Last year):	
281.23	26-Aug-16
Maximum Load till date:	
344.02 MW	18-Mar-17



འབྲུག་རྒྱལ་ཁོ་ལས་འཛིན།

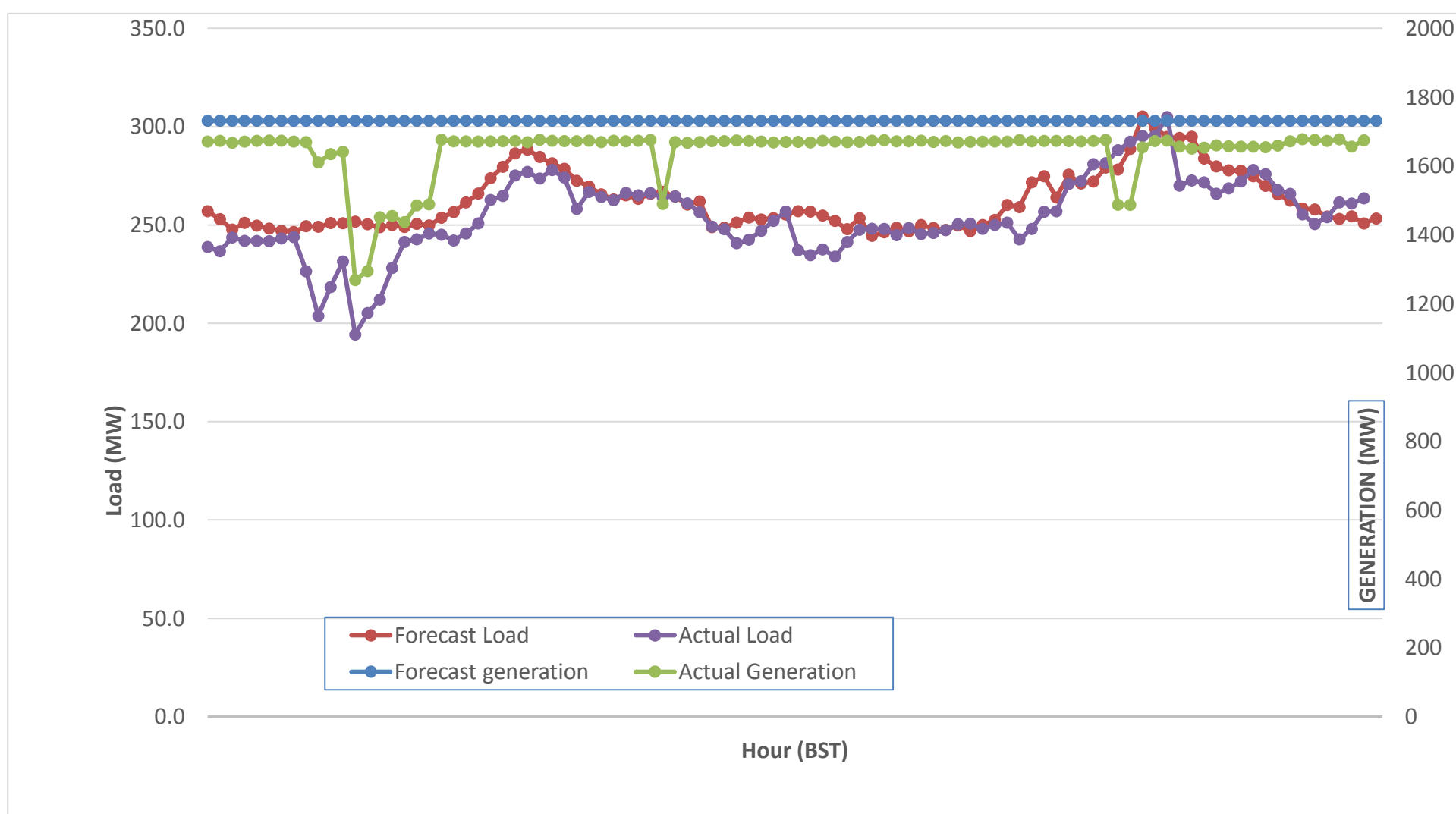
Bhutan Power Corporation Ltd.
 Bhutan Power System Operator
 Thimphu: Bhutan



Message No.: Enter your message number
 From: Shift In-charge, Control Room

Date: 27-Aug-17
 Time: 10:46

Forecast Generation & Load with Actual Generation & Load (26-Aug-2017).



Yours faithfully,

Sign:
Tshering Yangzom

	MW	Coincidental peak load of Day(Last year):	
Peak Co-incident Generation(26-Aug-2017).	1677.97	281.23	26-Aug-16
Peak Co-incident Load(26-Aug-2017).	304.89	Maximum Load till date:	
		344.02 MW	18-Mar-17

Telephone: +975-02335631; Fax: +975-02335632; Email: bhutansystemoperator@bpc.bt; www.bpc.bt



འབྲུག་གྲོག་མེ་ལས་འཛིན།
Bhutan Power Corporation Ltd.
Bhutan Power System Operator
Thimphu: Bhutan



Message Enter your message number
From: Shift In-charge, Control Room

Date: 27-Aug-17
Time: 10:47

To
 Managing Director, BPC. Email: gemtsShering@bpc.bt
 Director, O&MD, DGPC. Email: director.umd@drukgreen.com
 General Manager, TD, BPC. Email: thinleygyeltshen@bpc.bt
 General Manager, DCSD, BPC. Email: sandeeprai@bpc.bt
 General Manager, BPSO, BPC. Email: ujjwaldahal@bpc.bt

Sub: Load Generation Balance Report of Today (27-Aug-2017).

Hours (BST)	Forecast		Actual	
	Generation	Load	Generation	Load
0:00	1731.5	257	1674.3	253.84
0:15	1731.5	253	1670.8	256.98
0:30	1731.5	247.7	1672.1	253.28
0:45	1731.5	251.1	1675.3	251.73
1:00	1731.5	249.7	1668.5	246.61
1:15	1731.5	248.2	1670.8	246.13
1:30	1731.5	247.1	1671.5	248.65
1:45	1731.5	246.5	1669.2	252.63
2:00	1731.5	249.4	1672.5	254.91
2:15	1731.5	249.1	1674.7	254.91
2:30	1731.5	251	1670.6	257.95
2:45	1731.5	250.9	1668.9	261.15
3:00	1731.5	251.7	1667.8	256.76
3:15	1731.5	250.4	1674.9	261.08
3:30	1731.5	248.9	1675.0	255.03
3:45	1731.5	250	1670.2	258.40
4:00	1731.5	249	1670.9	250.91
4:15	1731.5	250.6	1673.4	258.88
4:30	1731.5	249.8	1669.9	261.63
4:45	1731.5	253.7	1674.4	265.70
5:00	1731.5	256.6	1675.5	267.23
5:15	1731.5	261.5	1684.2	259.33
5:30	1731.5	266	1687.6	267.42
5:45	1731.5	273.8	1707.7	273.19
6:00	1731.5	279.6	1726.7	259.69
6:15	1731.5	286.4	1733.2	272.63
6:30	1731.5	288.3	1736.6	278.34
6:45	1731.5	284.6	1728.1	279.50
7:00	1731.5	281.4	1731.9	276.83
7:15	1731.5	278.6	1736.4	279.77
7:30	1731.5	272.5	1734.8	285.50
7:45	1731.5	269.5	1738.0	285.16
8:00	1731.5	265.6	1737.4	281.02
8:15	1731.5	263	1733.6	280.13
8:30	1731.5	265.1	1735.8	285.34
8:45	1731.5	263.3	1736.0	272.65
9:00	1731.5	265.9	1733.4	283.74

Coincidental peak load of Day(Last year):	
278.74	27-Aug-17

Maximum Load till date:	
344.02 MW	18-Mar-17

Yours faithfully,

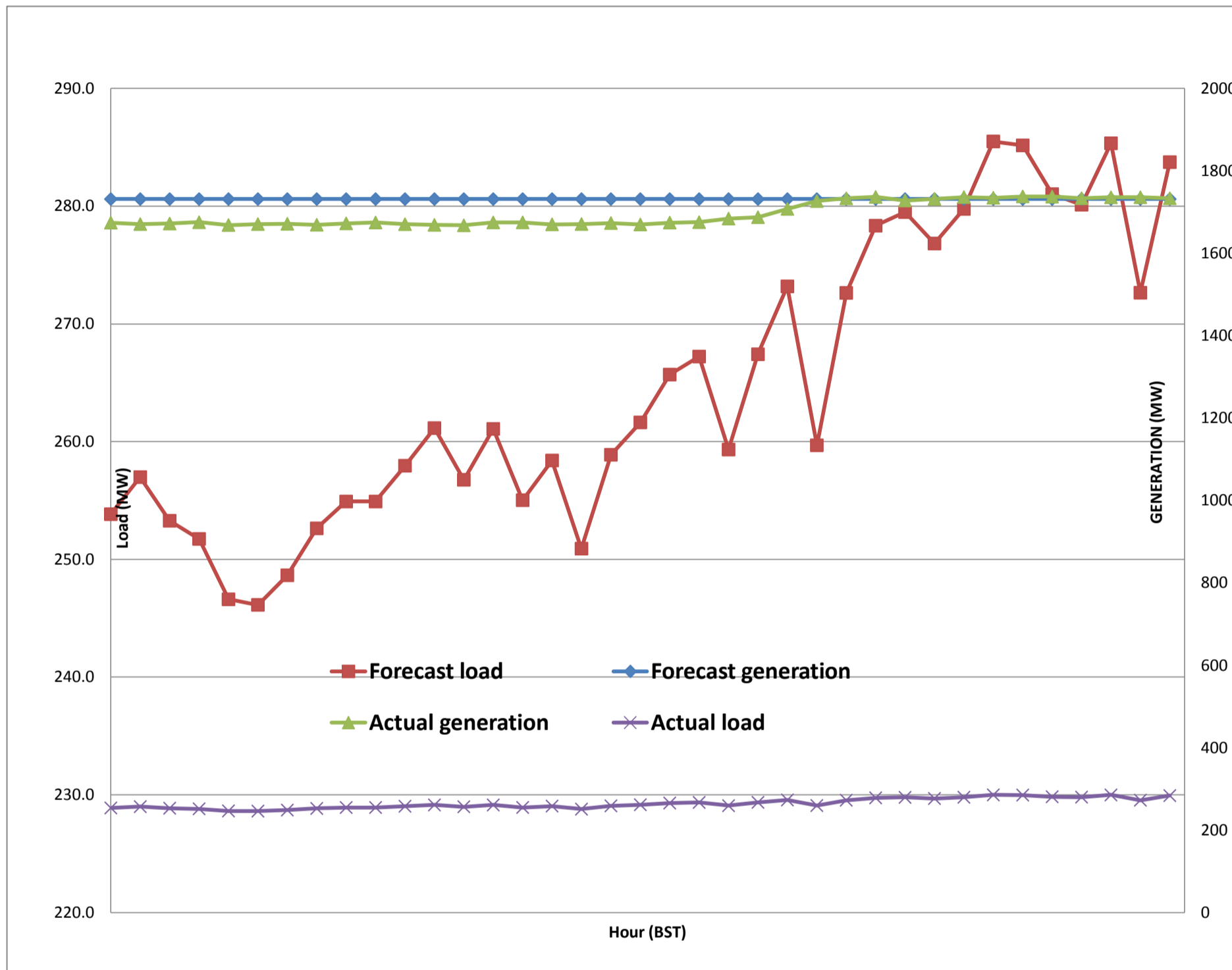
Sign:
 Tshering Yangzom



Message No.: Enter your message number
 From: Shift In-charge, Control Room

27-Aug-17
 10:47

Forecast Generation & Load with Actual Generation & Load of Today from 00:00hrs to 09:00hrs(27-Aug-2017).





Message No.: Enter your message number **Date:** 27-Aug-17
From: Shift In-charge, Control Room **Time:** 10:44

To
 Managing Director, BPC. Email: gemtshering@bpc.bt
 Director, O&MD, DGPC. Email: director.omb@drukgreen.com
 General Manager, TD, BPC. Email: ktobgye@bpc.bt
 General Manager, BPSO, BPC. Email: ujjiwaldahal@bpc.bt
 Advisor, BPC. Email: bharattamang@bpc.bt

Sub: Load Generation Balance Report of Tomorrow (28-Aug-2017).

Hours (BST)	Forecast		Hours (BST)	Forecast	
	Generation	Load		Generation	Load
0:00	1743.7	245.40	12:00	1743.7	250.2
0:15	1743.7	242.00	12:15	1743.7	251
0:30	1743.7	239.90	12:30	1743.7	249.2
0:45	1743.7	241.30	12:45	1743.7	248.1
1:00	1743.7	240.10	13:00	1743.7	244.9
1:15	1743.7	240.60	13:15	1743.7	249.2
1:30	1743.7	238.90	13:30	1743.7	245.5
1:45	1743.7	238.80	13:45	1743.7	246.1
2:00	1743.7	237.50	14:00	1743.7	249.8
2:15	1743.7	234.40	14:15	1743.7	248.2
2:30	1743.7	238.00	14:30	1743.7	248.8
2:45	1743.7	239.20	14:45	1743.7	247.8
3:00	1743.7	230.40	15:00	1743.7	248.4
3:15	1743.7	233.60	15:15	1743.7	247.5
3:30	1743.7	231.10	15:30	1743.7	248.4
3:45	1743.7	237.20	15:45	1743.7	249.9
4:00	1743.7	242.70	16:00	1743.7	250.5
4:15	1743.7	243.00	16:15	1743.7	253.6
4:30	1743.7	243.00	16:30	1743.7	256
4:45	1743.7	246.90	16:45	1743.7	253.6
5:00	1743.7	253.00	17:00	1743.7	263.1
5:15	1743.7	250.70	17:15	1743.7	259.5
5:30	1743.7	263.50	17:30	1743.7	269
6:45	1743.7	265.40	17:45	1743.7	270.3
6:00	1743.7	275.00	18:00	1743.7	271.3
6:15	1743.7	280.70	18:15	1743.7	280
6:30	1743.7	283.00	18:30	1743.7	278.7
6:45	1743.7	280.00	18:45	1743.7	287.8
7:00	1743.7	276.70	19:00	1743.7	299.5
7:15	1743.7	274.20	19:15	1743.7	295.2
7:30	1743.7	266.00	19:30	1743.7	286.7
7:45	1743.7	261.20	19:45	1743.7	280.7
8:00	1743.7	257.40	20:00	1743.7	286.7
8:15	1743.7	256.20	20:15	1743.7	276.4
8:30	1743.7	258.90	20:30	1743.7	275.3
8:45	1743.7	257.20	20:45	1743.7	269.8
9:00	1743.7	258.50	21:00	1743.7	271
9:15	1743.7	261.10	21:15	1743.7	269.5
9:30	1743.7	259.80	21:30	1743.7	265.1
9:45	1743.7	257.20	21:45	1743.7	260.6
10:00	1743.7	253.30	22:00	1743.7	260
10:15	1743.7	247.80	22:15	1743.7	256.2
10:30	1743.7	247.60	22:30	1743.7	248.3
10:45	1743.7	247.50	22:45	1743.7	248.4
11:00	1743.7	247.50	23:00	1743.7	248.3
11:15	1743.7	249.20	23:15	1743.7	249.2
11:30	1743.7	250.10	23:30	1743.7	247.4
11:45	1743.7	251.10	23:45	1743.7	249.7

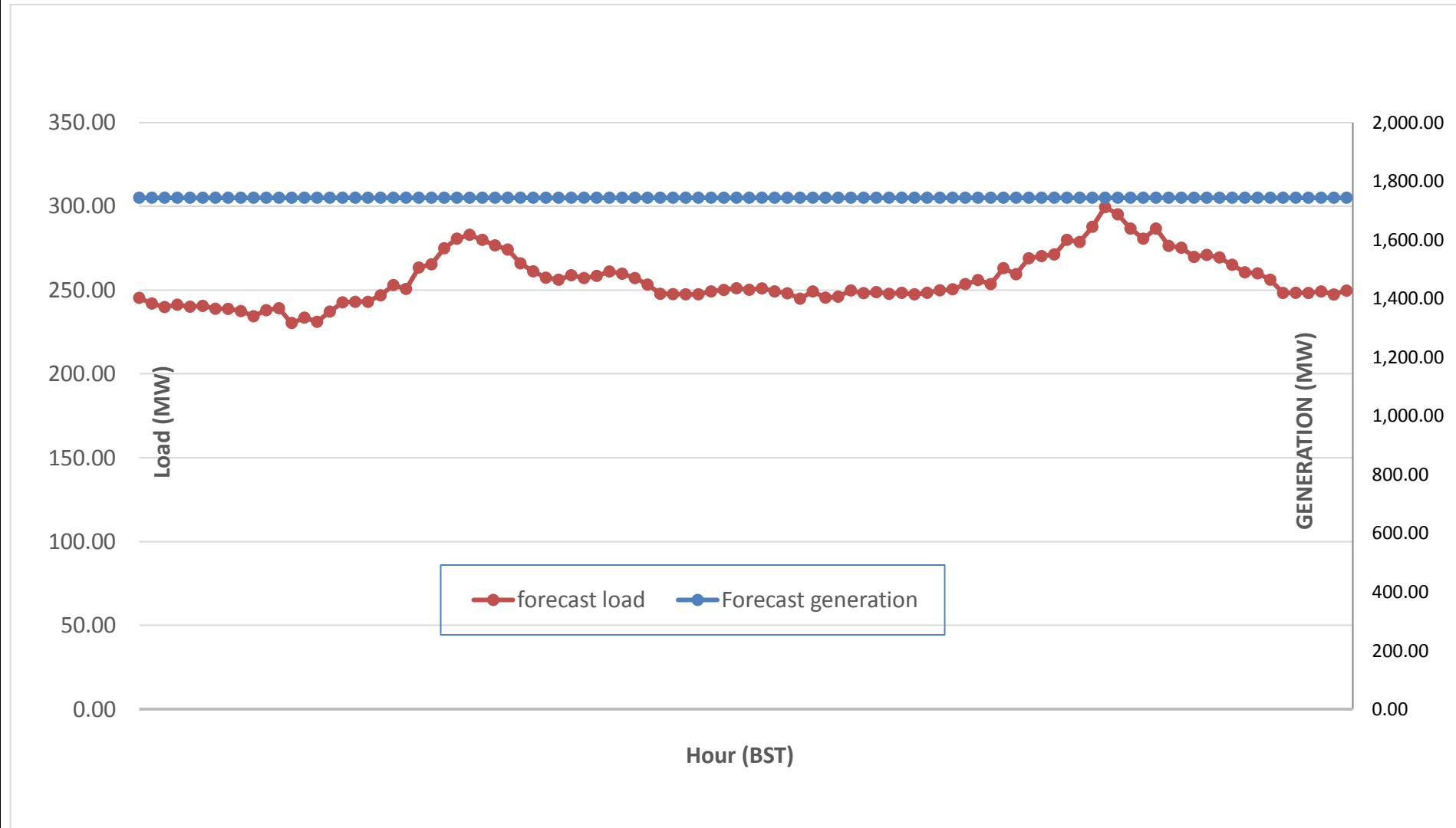
Yours faithfully,
 Sign:
 Tshering Yangzom



Message No.: Enter your message number
 From: Shift In-charge, Control Room

Date: 25-Aug-17
 Time: 10:13

Scheduled Generation & Load Forecast for Tomorrow (26-Aug-2017).



Yours faithfully,

Sign:
Tshering Yangzom

	MW
Scheduled Peak Generation(26-Aug-2017).	376.90
Forecast Peak Load(26-Aug-2017).	300.60