



ཕྱག་ལུགས་ལེ་ལས་འཛིན།

Bhutan Power Corporation Ltd.  
Bhutan Power System Operator  
Thimphu: Bhutan



Message No.: Enter your message number  
From: Shift In-charge, Control Room

Date: 25-Aug-17  
Time: 10:11

To  
Managing Director, BPC. Email: gemtshering@bpc.bt  
Director, O&MD, DGPC. Email: director.umd@drukgreen.com  
General Manager, TD, BPC. Email: ktobgye@bpc.bt  
General Manager, DCSD, BPC. Email: sandeeprai@bpc.bt  
General Manager, BPSO, BPC. Email: ujjwaldahal@bpc.bt

Sub: **Load Generation Balance Report of Yesterday (24-Aug-2017).**

Hours (BST)	Forecast		Actual		Hours (BST)	Forecast		Actual	
	Generation	Load	Generation	Load		Generation	Load	Generation	Load
0:00	1741.1	253.7	1730.3	256.04	12:00	1741.2	259	1730.8	262.41
0:15	1741.1	250.8	1733.0	253.79	12:15	1741.2	260	1733.0	264.58
0:30	1741.1	246.6	1735.3	247.60	12:30	1741.2	256.2	1733.4	261.82
0:45	1741.1	248.1	1733.1	247.08	12:45	1741.2	254.3	1736.4	258.00
1:00	1741.1	245.5	1731.6	248.83	13:00	1741.2	252.2	1732.4	255.18
1:15	1741.1	242	1732.8	249.46	13:15	1741.2	256.6	1735.3	257.13
1:30	1741.1	241.1	1735.0	245.95	13:30	1741.2	253.8	1732.3	251.88
1:45	1741.2	241.3	1733.8	251.86	13:45	1741.2	251.6	1736.3	255.18
2:00	1741.2	244.6	1735.2	253.14	14:00	1741.2	252.1	1736.4	257.71
2:15	1741.2	244.5	1732.4	252.26	14:15	1741.2	249.2	1734.2	253.13
2:30	1741.2	245.3	1731.4	257.96	14:30	1741.2	250.4	1734.8	256.57
2:45	1741.2	245.5	1736.0	257.73	14:45	1741.2	249.7	1733.1	255.63
3:00	1741.2	246.6	1730.2	257.89	15:00	1741.2	249.5	1734.2	251.65
3:15	1741.2	246.7	1732.8	255.25	15:15	1741.2	251.7	1734.8	253.78
3:30	1741.2	243.5	1731.8	253.60	15:30	1741.2	250.3	1732.8	245.26
3:45	1741.2	243.9	1733.6	254.25	15:45	1741.2	250.2	1730.5	248.32
4:00	1741.2	245.5	1731.4	247.01	16:00	1741.2	252.5	1733.9	255.20
4:15	1741.2	247.9	1730.4	249.84	16:15	1741.2	255.4	1576.4	249.13
4:30	1741.2	246.5	1733.3	243.37	16:30	1741.2	260.2	1571.1	252.01
4:45	1741.2	249	1735.7	251.13	16:45	1741.2	260.9	1608.8	244.20
5:00	1741.2	252.9	1731.4	250.77	17:00	1741.2	263.2	1610.3	281.31
5:15	1741.2	256.7	1734.7	262.72	17:15	1741.2	262.9	1545.8	242.56
5:30	1741.2	261.9	1733.0	267.73	17:30	1741.2	265.7	1574.6	247.38
6:45	1741.2	269.9	1734.7	270.52	17:45	1741.2	268.6	1591.7	258.56
6:00	1741.2	276.3	1732.2	278.79	18:00	1741.2	272.2	1610.8	267.45
6:15	1741.2	284.1	1730.5	287.36	18:15	1741.2	275.8	1673.3	277.57
6:30	1741.2	284.9	1732.5	288.27	18:30	1741.2	282.8	1606.8	266.45
6:45	1741.2	284.5	1733.7	289.00	18:45	1741.2	291	1655.3	282.20
7:00	1741.2	279.4	1734.7	286.19	19:00	1741.2	299.1	1671.8	290.06
7:15	1741.2	276.3	1732.6	274.52	19:15	1741.2	301.5	1671.3	288.26
7:30	1741.2	272.5	1732.9	272.28	19:30	1741.2	298.7	1673.8	283.98
7:45	1741.2	267.3	1732.1	263.50	19:45	1741.2	296.1	1670.1	279.65
8:00	1741.2	264.5	1734.8	262.68	20:00	1741.2	292.5	1672.4	268.69
8:15	1741.2	261.6	1734.6	263.09	20:15	1741.2	285.6	1673.4	272.93
8:30	1741.2	263.6	1735.7	264.48	20:30	1741.2	285	1674.5	263.68
8:45	1741.2	264.7	1735.5	248.63	20:45	1741.2	283.7	1674.0	263.57
9:00	1741.2	265.9	1737.2	265.16	21:00	1741.2	283.4	1671.9	259.59
9:15	1741.2	266.2	1734.8	260.75	21:15	1741.2	279.8	1670.0	258.16
9:30	1741.2	265.3	1732.3	249.77	21:30	1741.2	277.6	1670.2	244.86
9:45	1741.2	260.6	1730.5	260.34	21:45	1741.2	273.3	1670.7	248.35
10:00	1741.2	264.7	1734.7	261.23	22:00	1741.2	271.2	1674.2	237.13
10:15	1741.2	256.2	1734.8	255.72	22:15	1741.2	269	1674.2	230.26
10:30	1741.2	254.5	1737.4	249.23	22:30	1741.2	261.2	1671.4	238.05
10:45	1741.2	256.1	1734.6	254.82	22:45	1741.2	258.7	1673.5	237.48
11:00	1741.2	256.8	1733.7	259.24	23:00	1741.2	256.9	1672.3	236.92
11:15	1741.2	255.5	1733.7	252.51	23:15	1741.2	257.8	1671.0	238.52
11:30	1741.2	257.2	1732.8	261.84	23:30	1741.2	254.8	1675.0	230.63
11:45	1741.2	257.9	1736.0	260.08	23:45	1741.2	255.2	1672.8	237.88

Yours faithfully,

Sign:  
Phub Zam

Coincidental peak load of Day(Last year):	
212.05	24-Aug-16
Maximum Load till date:	
344.02 MW	18-Mar-17



འབྲུག་རྒྱལ་ཁོ་ལས་འཛིན།

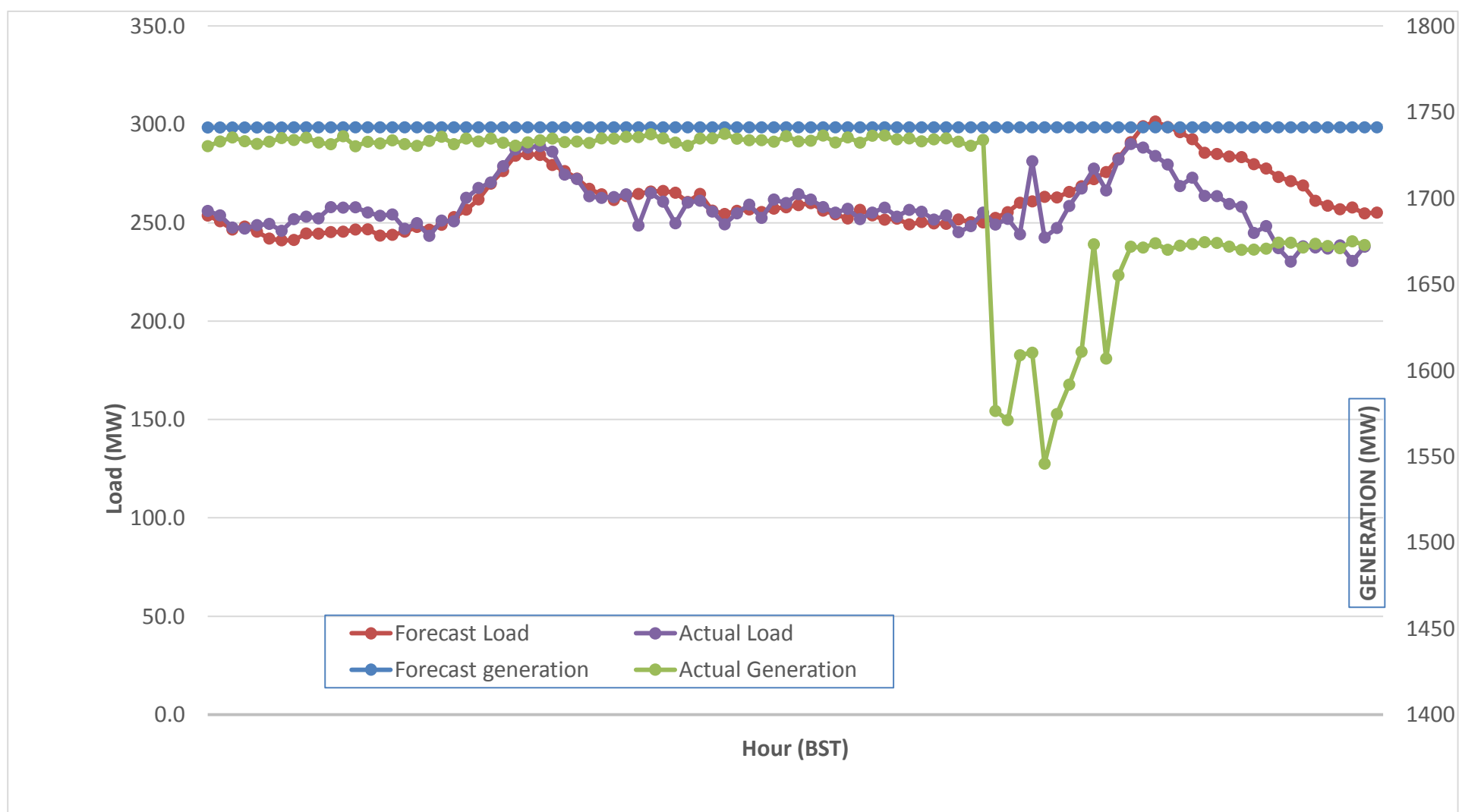
Bhutan Power Corporation Ltd.  
 Bhutan Power System Operator  
 Thimphu: Bhutan



Message No.: Enter your message number  
 From: Shift In-charge, Control Room

Date: 25-Aug-17  
 Time: 10:14

Forecast Generation & Load with Actual Generation & Load (24-Aug-2017).



Yours faithfully,

Sign:  
**Phub Zam**

	MW	Coincidental peak load of Day(Last year):	
Peak Co-incident Generation(24-Aug-2017).	1737.41	212.05	24-Aug-16
Peak Co-incident Load(24-Aug-2017).	290.06	Maximum Load till date:	
		344.02 MW	18-Mar-17

Telephone: +975-02335631; Fax: +975-02335632; Email: bhutansystemoperator@bpc.bt; www.bpc.bt



འབྲུག་གྲོག་མེ་ལས་འཛིན།  
**Bhutan Power Corporation Ltd.**  
**Bhutan Power System Operator**  
**Thimphu: Bhutan**



**Message** Enter your message number  
**From:** Shift In-charge, Control Room

**Date:** 25-Aug-17  
**Time:** 10:12

**To**  
 Managing Director, BPC. Email: gemtsshering@bpc.bt  
 Director, O&MD, DGPC. Email: director.umd@drukgreen.com  
 General Manager, TD, BPC. Email: thinleygyeltshen@bpc.bt  
 General Manager, DCSD, BPC. Email: sandeeprai@bpc.bt  
 General Manager, BPSO, BPC. Email: ujjwaldahal@bpc.bt

**Sub:** Load Generation Balance Report of Today (22-Aug-2017).

Hours (BST)	Forecast		Actual	
	Generation	Load	Generation	Load
0:00	1741.7	255	1673.0	235.34
0:15	1741.7	251.7	1673.7	228.25
0:30	1741.7	247.3	1673.2	228.58
0:45	1741.7	250.3	1670.2	223.30
1:00	1741.7	247.6	1674.3	226.17
1:15	1741.7	245	1670.3	226.74
1:30	1741.7	245.1	1670.1	219.43
1:45	1741.7	242.9	1669.9	220.61
2:00	1741.7	246	1673.5	224.05
2:15	1741.7	245.4	1669.2	224.70
2:30	1741.7	246.3	1673.4	228.34
2:45	1741.7	247.4	1676.1	223.22
3:00	1741.7	248.2	1671.6	224.92
3:15	1741.7	247.4	1671.2	225.04
3:30	1741.7	245.3	1668.7	215.27
3:45	1741.7	246.1	1673.5	224.06
4:00	1741.7	248.6	1673.4	226.35
4:15	1741.7	250.5	1674.4	228.80
4:30	1741.7	249.7	1672.2	226.39
4:45	1741.7	251.5	1676.1	231.14
5:00	1741.7	255.3	1674.3	221.50
5:15	1741.7	258.9	1672.9	232.95
5:30	1741.7	264.5	1670.1	239.16
5:45	1741.7	272.5	1673.3	249.31
6:00	1741.7	279.1	1671.3	261.69
6:15	1741.7	287.3	1671.9	268.16
6:30	1741.7	288.3	1672.0	278.30
6:45	1741.7	285.2	1669.8	268.24
7:00	1741.7	280.8	1673.1	260.23
7:15	1741.7	278.9	1669.1	260.10
7:30	1741.7	273.3	1675.3	255.43
7:45	1741.7	269.2	1671.2	236.05
8:00	1741.7	265.7	1673.3	227.35
8:15	1741.7	263.4	1669.9	226.02
8:30	1741.7	265.2	1673.8	231.41
8:45	1741.7	265.8	1673.5	233.34
9:00	1741.7	266.4	1675.3	237.30

Coincidental peak load of Day(Last year):	
226.08	25-Aug-17

Maximum Load till date:	
344.02 MW	18-Mar-17

Yours faithfully,

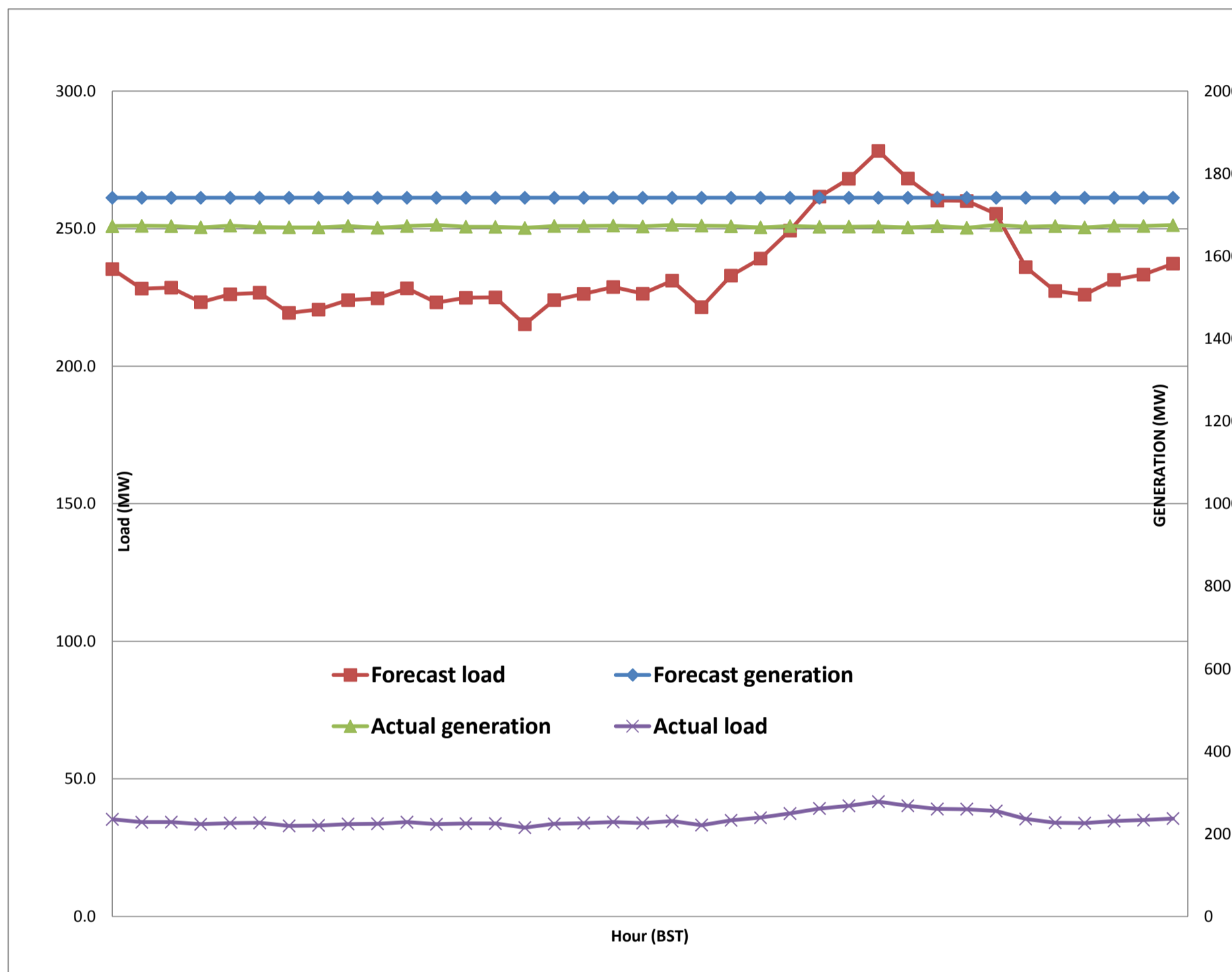
Sign:  
 Phub Zam



Message No.: Enter your message number  
 From: Shift In-charge, Control Room

25-Aug-17  
 10:12

Forecast Generation & Load with Actual Generation & Load of Today from 00:00hrs to 09:00hrs(25-Aug-2017).





**Message No.:** Enter your message number  
**From:** Shift In-charge, Control Room  
**Date:** 25-Aug-17  
**Time:** 10:11

###  
 ###

**To**  
 Managing Director, BPC. Email: gemtshering@bpc.bt  
 Director, O&MD, DGPC. Email: director.umd@drukgreen.com  
 General Manager, TD, BPC. Email: ktobgye@bpc.bt  
 General Manager, BPSO, BPC. Email: ujwaldahal@bpc.bt  
 Advisor, BPC. Email: bharattamang@bpc.bt

**Sub:** Load Generation Balance Report of Tomorrow (26-Aug-2017).

Hours (BST)	Forecast		Hours (BST)	Forecast	
	Generation	Load		Generation	Load
0:00	1731.5	257.00	12:00	1731.5	257
0:15	1731.5	253.00	12:15	1731.5	256.8
0:30	1731.5	247.70	12:30	1731.5	254.8
0:45	1731.5	251.10	12:45	1731.5	252.1
1:00	1731.5	249.70	13:00	1731.5	247.9
1:15	1731.5	248.20	13:15	1731.5	253.5
1:30	1731.5	247.10	13:30	1731.5	244.5
1:45	1731.5	246.50	13:45	1731.5	246.3
2:00	1731.5	249.40	14:00	1731.5	248.6
2:15	1731.5	249.10	14:15	1731.5	246.8
2:30	1731.5	251.00	14:30	1731.5	250
2:45	1731.5	250.90	14:45	1731.5	248.5
3:00	1731.5	251.70	15:00	1731.5	247.5
3:15	1731.5	250.40	15:15	1731.5	249.8
3:30	1731.5	248.90	15:30	1731.5	246.9
3:45	1731.5	250.00	15:45	1731.5	250
4:00	1731.5	249.00	16:00	1731.5	252.6
4:15	1731.5	250.60	16:15	1731.5	260.2
4:30	1731.5	249.80	16:30	1731.5	259.1
4:45	1731.5	253.70	16:45	1731.5	271.7
5:00	1731.5	256.60	17:00	1731.5	274.8
5:15	1731.5	261.50	17:15	1731.5	264
5:30	1731.5	266.00	17:30	1731.5	275.6
6:45	1731.5	273.80	17:45	1731.5	271.1
6:00	1731.5	279.60	18:00	1731.5	272.1
6:15	1731.5	286.40	18:15	1731.5	279.2
6:30	1731.5	288.30	18:30	1731.5	278.2
6:45	1731.5	284.60	18:45	1731.5	288.7
7:00	1731.5	281.40	19:00	1731.5	305.2
7:15	1731.5	278.60	19:15	1731.5	299.3
7:30	1731.5	272.50	19:30	1731.5	294.8
7:45	1731.5	269.50	19:45	1731.5	294.3
8:00	1731.5	265.60	20:00	1731.5	294.9
8:15	1731.5	263.00	20:15	1731.5	283.8
8:30	1731.5	265.10	20:30	1731.5	279.8
8:45	1731.5	263.30	20:45	1731.5	277.8
9:00	1731.5	265.90	21:00	1731.5	277.6
9:15	1731.5	266.90	21:15	1731.5	274.8
9:30	1731.5	264.50	21:30	1731.5	269.9
9:45	1731.5	260.40	21:45	1731.5	265.6
10:00	1731.5	262.00	22:00	1731.5	262.4
10:15	1731.5	248.90	22:15	1731.5	258.4
10:30	1731.5	248.60	22:30	1731.5	257.9
10:45	1731.5	251.20	22:45	1731.5	254.3
11:00	1731.5	253.80	23:00	1731.5	253.1
11:15	1731.5	252.80	23:15	1731.5	254.4
11:30	1731.5	253.50	23:30	1731.5	250.8
11:45	1731.5	255.30	23:45	1731.5	253.3

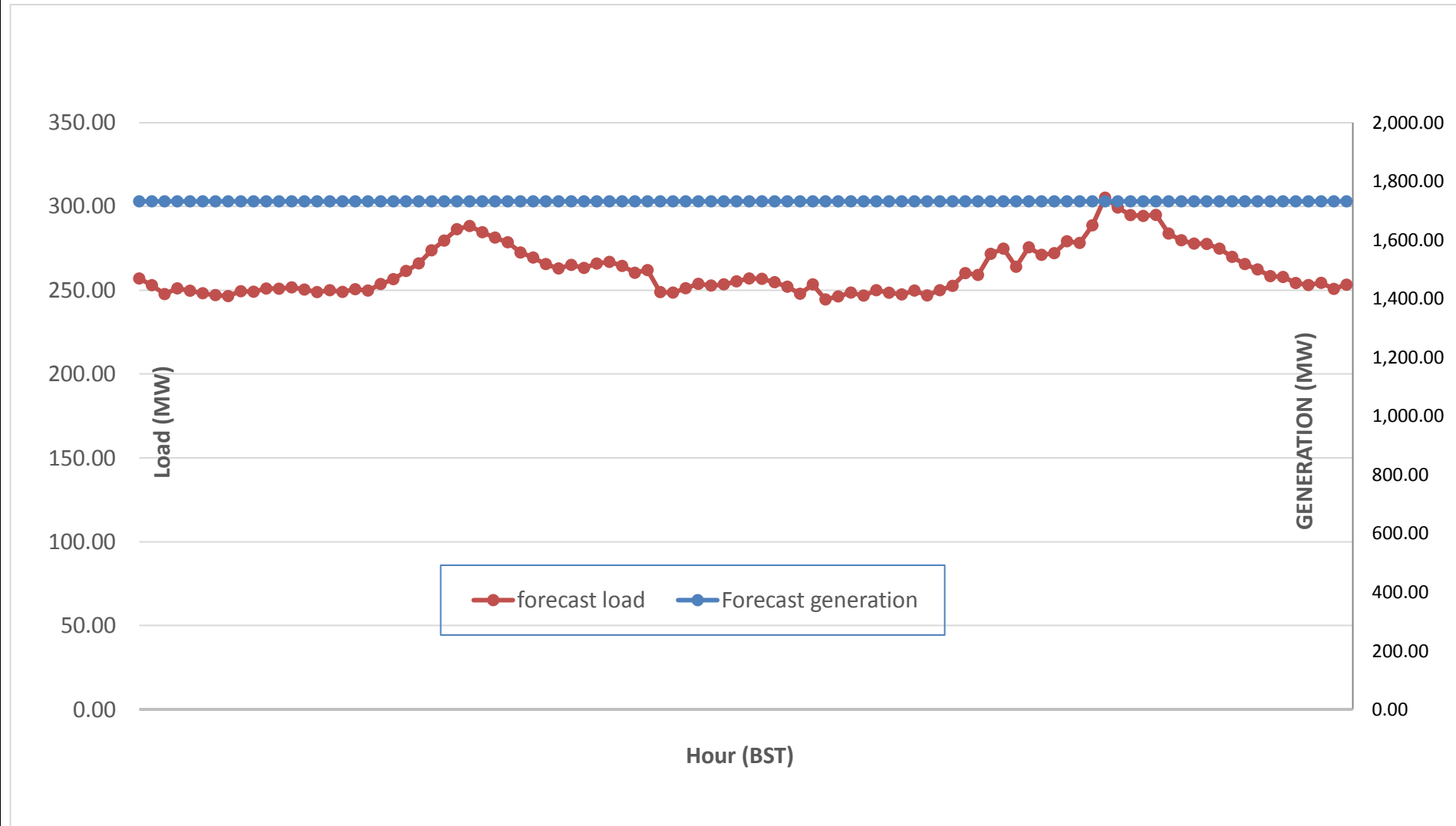
Yours faithfully,  
 Sign:  
 Phub Zam



Message No.: Enter your message number  
 From: Shift In-charge, Control Room

Date: 25-Aug-17  
 Time: 10:13

**Scheduled Generation & Load Forecast for Tomorrow (26-Aug-2017).**



Yours faithfully,

Sign:  
**Phub Zam**

	MW
Scheduled Peak Generation(26-Aug-2017).	376.90
Forecast Peak Load(26-Aug-2017).	300.60