



འབྲུག་གླིང་གི་ལམ་འཛིན།

Bhutan Power Corporation Ltd.
Bhutan Power System Operator
Thimphu: Bhutan



Message No.: Enter your message number
From: Shift In-charge, Control Room

Date: 23-Aug-17
Time: 10:13

To
Managing Director, BPC. Email: gemtshering@bpc.bt
Director, O&MD, DGPC. Email: director.omb@drukgreen.com
General Manager, TD, BPC. Email: ktobgye@bpc.bt
General Manager, DCSD, BPC. Email: sandeeprai@bpc.bt
General Manager, BPSO, BPC. Email: ujjwaldahal@bpc.bt

Sub: Load Generation Balance Report of Yesterday (22-Aug-2017).

Hours (BST)	Forecast		Actual		Hours (BST)	Forecast		Actual	
	Generation	Load	Generation	Load		Generation	Load	Generation	Load
0:00	1731.5	259.8	1734.3	242.09	12:00	1731.5	255.2	1736.7	266.74
0:15	1731.5	258.4	1736.3	242.95	12:15	1731.5	255.1	1738.4	267.69
0:30	1731.5	253.3	1737.3	240.64	12:30	1731.5	251.7	1740.6	265.02
0:45	1731.5	256.4	1735.6	235.10	12:45	1731.5	251.9	1734.0	253.46
1:00	1731.5	253.3	1734.1	233.73	13:00	1731.5	250.5	1735.3	247.72
1:15	1731.5	250.7	1731.6	234.53	13:15	1731.5	255.4	1736.9	254.52
1:30	1731.5	249.9	1736.9	236.76	13:30	1731.5	250.5	1733.1	258.88
1:45	1731.5	249.4	1731.1	225.87	13:45	1731.5	248.5	1732.4	254.34
2:00	1731.5	252	1732.6	232.91	14:00	1731.5	246.9	1738.7	255.61
2:15	1731.5	250.7	1732.7	232.74	14:15	1731.5	246.7	1737.3	257.07
2:30	1731.5	253.3	1737.3	240.13	14:30	1731.5	246.5	1734.5	255.40
2:45	1731.5	251.3	1733.8	235.14	14:45	1731.5	248.9	1737.3	249.72
3:00	1731.5	253	1736.0	233.68	15:00	1731.5	247.1	1736.3	251.95
3:15	1731.5	251.7	1731.5	238.24	15:15	1731.5	252.9	1732.6	254.95
3:30	1731.5	249.6	1738.9	237.25	15:30	1731.5	249.9	1734.8	256.53
3:45	1731.5	247.1	1735.8	243.89	15:45	1731.5	251.1	1737.3	252.87
4:00	1731.5	246.8	1738.2	245.43	16:00	1731.5	252	1736.7	260.63
4:15	1731.5	248.1	1736.2	251.32	16:15	1731.5	253.2	1737.7	267.11
4:30	1731.5	247.9	1733.2	255.27	16:30	1731.5	255.4	1733.8	270.00
4:45	1731.5	250.4	1733.3	255.39	16:45	1731.5	257.9	1737.7	265.20
5:00	1731.5	254.2	1735.8	246.87	17:00	1731.5	258.9	1737.2	268.40
5:15	1731.5	257.3	1733.9	254.76	17:15	1731.5	260.1	1734.5	274.01
5:30	1731.5	261	1737.8	259.11	17:30	1731.5	262.4	1736.3	278.10
6:45	1731.5	269.9	1733.4	270.33	17:45	1731.5	267.1	1736.3	274.90
6:00	1731.5	272.7	1735.3	281.88	18:00	1731.5	269	1735.8	281.15
6:15	1731.5	280.3	1732.4	289.85	18:15	1731.5	276.6	1733.8	286.86
6:30	1731.5	280.7	1734.4	291.63	18:30	1731.5	282.4	1738.7	291.88
6:45	1731.5	282	1733.3	288.35	18:45	1731.5	288.9	1736.1	299.11
7:00	1731.5	280.6	1736.3	273.14	19:00	1731.5	296.6	1734.8	308.80
7:15	1731.5	276.1	1735.1	277.29	19:15	1731.5	300.4	1736.7	311.96
7:30	1731.5	271.1	1735.9	276.20	19:30	1731.5	299.5	1736.3	307.91
7:45	1731.5	267.4	1733.1	276.69	19:45	1731.5	296.6	1732.0	298.85
8:00	1731.5	264.5	1736.9	264.59	20:00	1731.5	294	1735.5	292.05
8:15	1731.5	264.2	1733.2	261.31	20:15	1731.5	291	1735.0	279.31
8:30	1731.5	263.8	1736.0	260.85	20:30	1731.5	289.3	1731.7	271.98
8:45	1731.5	264.9	1739.1	262.26	20:45	1731.5	289.1	1735.0	284.47
9:00	1731.5	266.2	1738.6	268.16	21:00	1731.5	284.5	1731.3	286.21
9:15	1731.5	266	1736.4	268.52	21:15	1731.5	280	1731.1	281.40
9:30	1731.5	264.8	1738.8	269.34	21:30	1731.5	278.1	1732.0	281.59
9:45	1731.5	258.7	1737.2	266.21	21:45	1731.5	275	1730.8	275.58
10:00	1731.5	263.5	1734.6	266.77	22:00	1731.5	274	1735.5	274.73
10:15	1731.5	255.9	1738.5	254.04	22:15	1731.5	269.6	1735.5	274.59
10:30	1731.5	252.5	1738.4	253.96	22:30	1731.5	266	1731.2	262.42
10:45	1731.5	253.3	1737.5	252.97	22:45	1731.5	263.2	1738.3	254.97
11:00	1731.5	256.9	1739.5	256.55	23:00	1731.5	259	1732.9	259.34
11:15	1731.5	256.2	1733.2	250.88	23:15	1731.5	259.7	1733.6	257.91
11:30	1731.5	256.2	1734.4	249.63	23:30	1731.5	255.5	1736.3	263.81
11:45	1731.5	255	1736.2	260.15	23:45	1731.5	255.6	1735.9	260.53

Yours faithfully,

Sign:
Karma Choden

Coincidental peak load of Day(Last year):	
284.44 MW	22-Aug-16
Maximum Load till date:	
344.02 MW	18-Mar-17



འབྲུག་རྒྱལ་ཁོ་ལས་འཛིན།

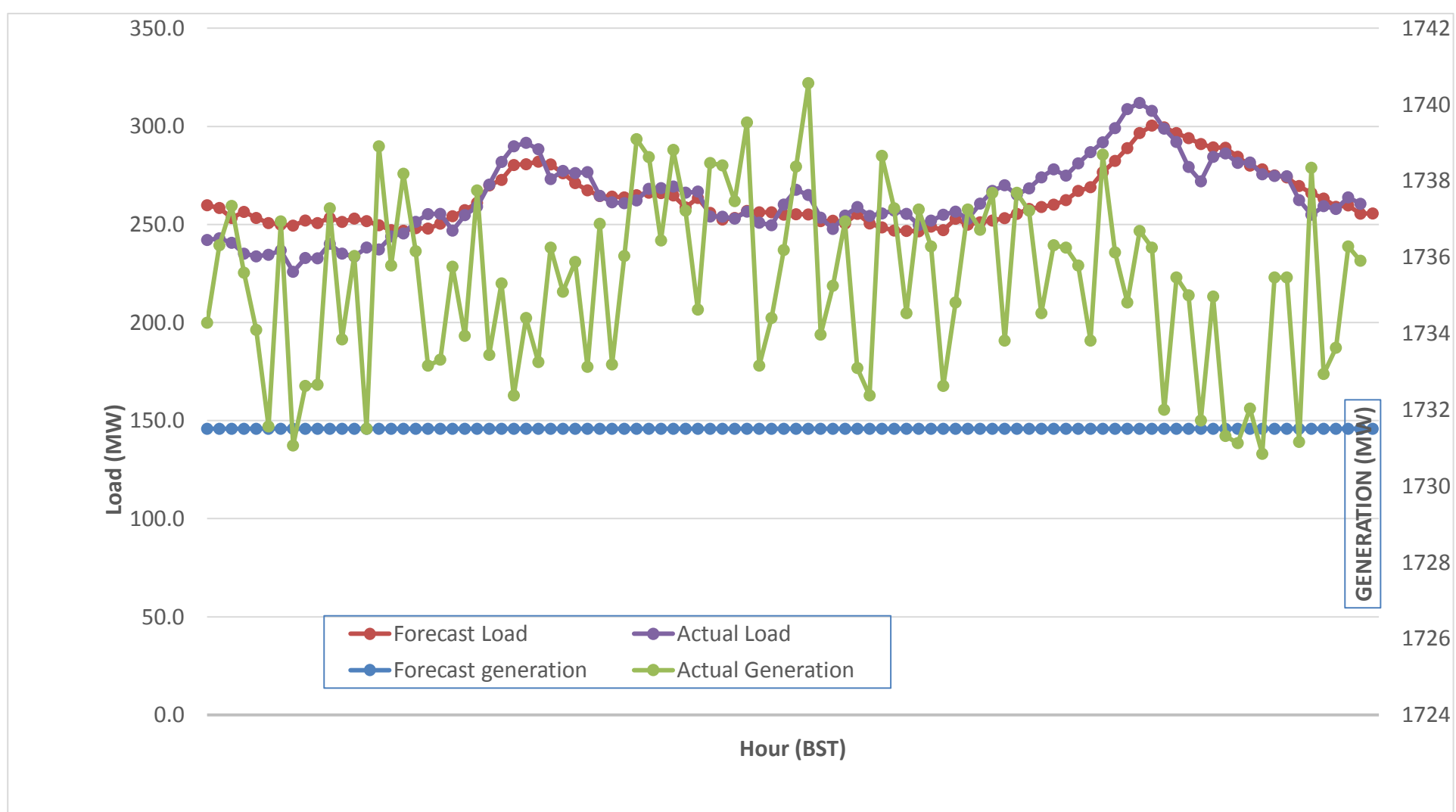
Bhutan Power Corporation Ltd.
 Bhutan Power System Operator
 Thimphu: Bhutan



Message No.: Enter your message number
 From: Shift In-charge, Control Room

Date: 23-Aug-17
 Time: 10:13

Forecast Generation & Load with Actual Generation & Load (22-Aug-2017).



Yours faithfully,

Sign:

Karma Choden

	MW
Peak Co-incident Generation(22-Aug-2017).	1740.56
Peak Co-incident Load(22-Aug-2017).	311.96

Coincidental peak load of Day(Last year):	
284.44 MW	22-Aug-16
Maximum Load till date:	
344.02 MW	18-Mar-17

Telephone: +975-02335631; Fax: +975-02335632; Email: bhutansystemoperator@bpc.bt; www.bpc.bt



འབྲུག་གྲོག་མེ་ལས་འཛིན།

Bhutan Power Corporation Ltd.
Bhutan Power System Operator
Thimphu: Bhutan



Message Enter your message number
From: Shift In-charge, Control Room

Date: 23-Aug-17
Time: 10:13

To
Managing Director, BPC. Email: gemtsshering@bpc.bt
Director, O&MD, DGPC. Email: director.umd@drukgreen.com
General Manager, TD, BPC. Email: thinleygyeltshen@bpc.bt
General Manager, DCSD, BPC. Email: sandeeprai@bpc.bt
General Manager, BPSO, BPC. Email: ujjwaldahal@bpc.bt

Sub: Load Generation Balance Report of Today (22-Aug-2017).

Hours (BST)	Forecast		Actual	
	Generation	Load	Generation	Load
0:00	1741.1	256.6	1736.2	257.95
0:15	1741.1	254.7	1735.4	254.66
0:30	1741.1	250.8	1734.8	246.28
0:45	1741.1	253.1	1737.9	251.86
1:00	1741.1	249.2	1733.0	253.70
1:15	1741.1	246.5	1733.9	252.23
1:30	1741.1	245.3	1733.5	258.26
1:45	1741.1	245.3	1732.8	247.34
2:00	1741.1	247.7	1734.0	246.16
2:15	1741.1	247.1	1735.6	246.75
2:30	1741.1	247.5	1734.8	248.50
2:45	1741.1	247.6	1732.4	251.97
3:00	1741.1	250	1734.4	253.18
3:15	1741.1	248.7	1734.3	251.17
3:30	1741.1	245.1	1736.5	247.08
3:45	1741.1	244.2	1734.8	255.07
4:00	1741.1	245.2	1735.9	255.48
4:15	1741.1	246.5	1736.4	258.05
4:30	1741.1	246.7	1735.7	259.05
4:45	1741.1	249.1	1737.0	259.84
5:00	1741.1	252.9	1733.9	259.80
5:15	1741.1	256.3	1733.8	263.14
5:30	1741.1	260.4	1732.5	272.05
5:45	1741.1	269.2	1732.1	276.62
6:00	1741.1	273.8	1735.8	287.84
6:15	1741.1	281.2	1730.1	294.23
6:30	1741.1	281.9	1660.1	271.91
6:45	1741.1	283.1	1644.6	286.21
7:00	1741.1	280.2	1644.7	288.05
7:15	1741.1	274.8	1640.8	280.41
7:30	1741.1	271.2	1644.8	276.17
7:45	1741.1	265.3	1643.1	275.42
8:00	1741.1	264.4	1643.4	269.15
8:15	1741.1	262.7	1644.3	271.09
8:30	1741.1	263.6	1644.8	267.72
8:45	1741.1	264.4	1679.9	269.24
9:00	1741.1	264.8	1731.4	265.06

Coincidental peak load of Day(Last year):	
280.93 MW	23-Aug-17

Maximum Load till date:	
344.02 MW	18-Mar-17

Yours faithfully,

Sign:
Karma Choden

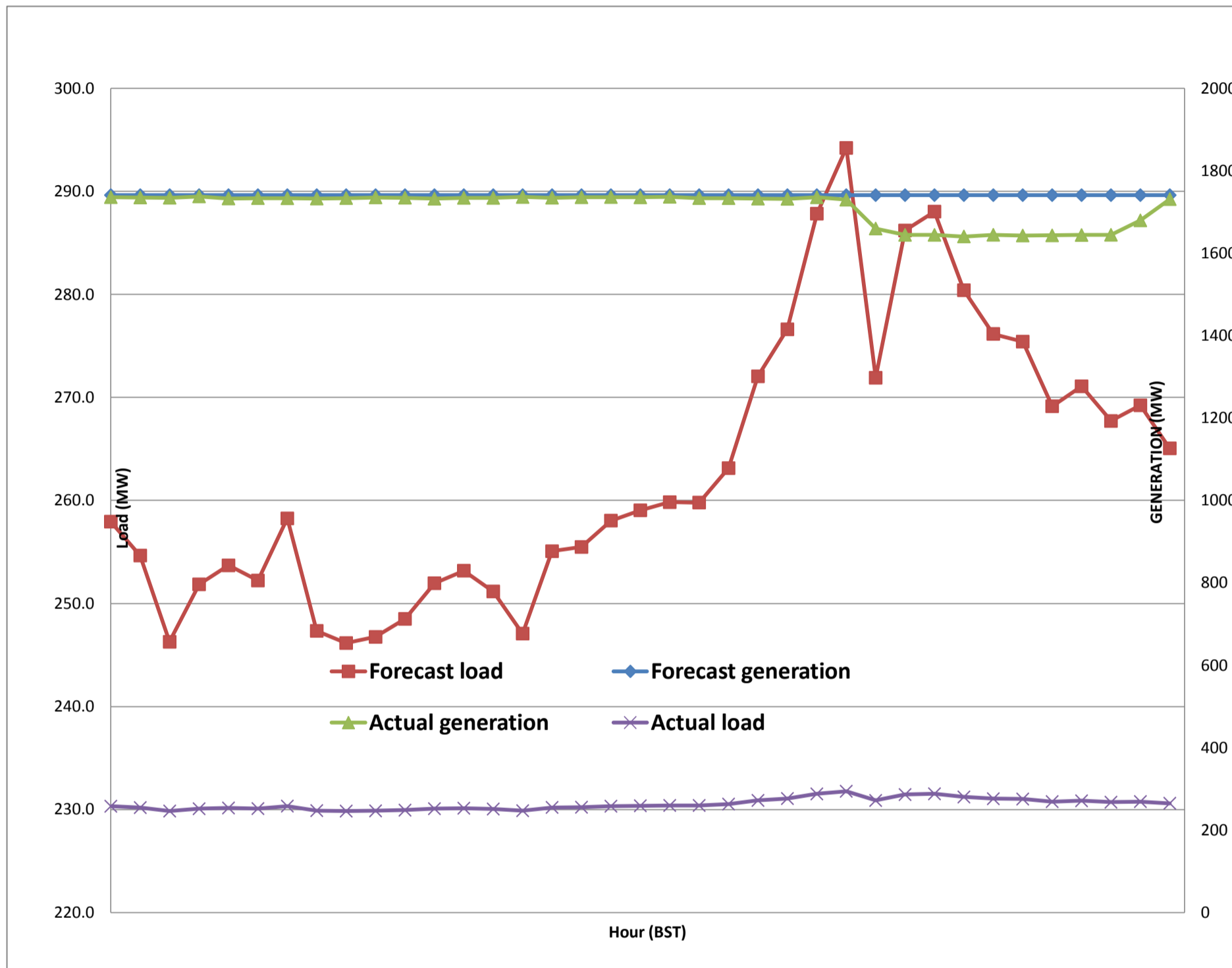
Telephone: +975-02335631; Fax: +975-02335632; Email: bhutansystemoperator@bpc.bt; www.bpc.bt



Message No.: Enter your message number
 From: Shift In-charge, Control Room

Date: 23-Aug-17
 Time: 10:13

Forecast Generation & Load with Actual Generation & Load of Today from 00:00hrs to 09:00hrs(23-Aug-2017).





Message No.: Enter your message number **Date:** 23-Aug-17
From: Shift In-charge, Control Room **Time:** 11:06

To
 Managing Director, BPC. Email: gemtshering@bpc.bt
 Director, O&MD, DGPC. Email: director.umd@drukgreen.com
 General Manager, TD, BPC. Email: ktobgye@bpc.bt
 General Manager, BPSO, BPC. Email: ujjiwaldahal@bpc.bt
 Advisor, BPC. Email: bharattamang@bpc.bt

Sub: Load Generation Balance Report of Tomorrow (24-Aug-2017).

Hours (BST)	Forecast		Hours (BST)	Forecast	
	Generation	Load		Generation	Load
0:00	1741.1	253.70	12:00	1741.2	259
0:15	1741.1	250.80	12:15	1741.2	260
0:30	1741.1	246.60	12:30	1741.2	256.2
0:45	1741.1	248.10	12:45	1741.2	254.3
1:00	1741.1	245.50	13:00	1741.2	252.2
1:15	1741.1	242.00	13:15	1741.2	256.6
1:30	1741.1	241.10	13:30	1741.2	253.8
1:45	1741.2	241.30	13:45	1741.2	251.6
2:00	1741.2	244.60	14:00	1741.2	252.1
2:15	1741.2	244.50	14:15	1741.2	249.2
2:30	1741.2	245.30	14:30	1741.2	250.4
2:45	1741.2	245.50	14:45	1741.2	249.7
3:00	1741.2	246.60	15:00	1741.2	249.5
3:15	1741.2	246.70	15:15	1741.2	251.7
3:30	1741.2	243.50	15:30	1741.2	250.3
3:45	1741.2	243.90	15:45	1741.2	250.2
4:00	1741.2	245.50	16:00	1741.2	252.5
4:15	1741.2	247.90	16:15	1741.2	255.4
4:30	1741.2	246.50	16:30	1741.2	260.2
4:45	1741.2	249.00	16:45	1741.2	260.9
5:00	1741.2	252.90	17:00	1741.2	263.2
5:15	1741.2	256.70	17:15	1741.2	262.9
5:30	1741.2	261.90	17:30	1741.2	265.7
6:45	1741.2	269.90	17:45	1741.2	268.6
6:00	1741.2	276.30	18:00	1741.2	272.2
6:15	1741.2	284.10	18:15	1741.2	275.8
6:30	1741.2	284.90	18:30	1741.2	282.8
6:45	1741.2	284.50	18:45	1741.2	291
7:00	1741.2	279.40	19:00	1741.2	299.1
7:15	1741.2	276.30	19:15	1741.2	301.5
7:30	1741.2	272.50	19:30	1741.2	298.7
7:45	1741.2	267.30	19:45	1741.2	296.1
8:00	1741.2	264.50	20:00	1741.2	292.5
8:15	1741.2	261.60	20:15	1741.2	285.6
8:30	1741.2	263.60	20:30	1741.2	285
8:45	1741.2	264.70	20:45	1741.2	283.7
9:00	1741.2	265.90	21:00	1741.2	283.4
9:15	1741.2	266.20	21:15	1741.2	279.8
9:30	1741.2	265.30	21:30	1741.2	277.6
9:45	1741.2	260.60	21:45	1741.2	273.3
10:00	1741.2	264.70	22:00	1741.2	271.2
10:15	1741.2	256.20	22:15	1741.2	269
10:30	1741.2	254.50	22:30	1741.2	261.2
10:45	1741.2	256.10	22:45	1741.2	258.7
11:00	1741.2	256.80	23:00	1741.2	256.9
11:15	1741.2	255.50	23:15	1741.2	257.8
11:30	1741.2	257.20	23:30	1741.2	254.8
11:45	1741.2	257.90	23:45	1741.2	255.2

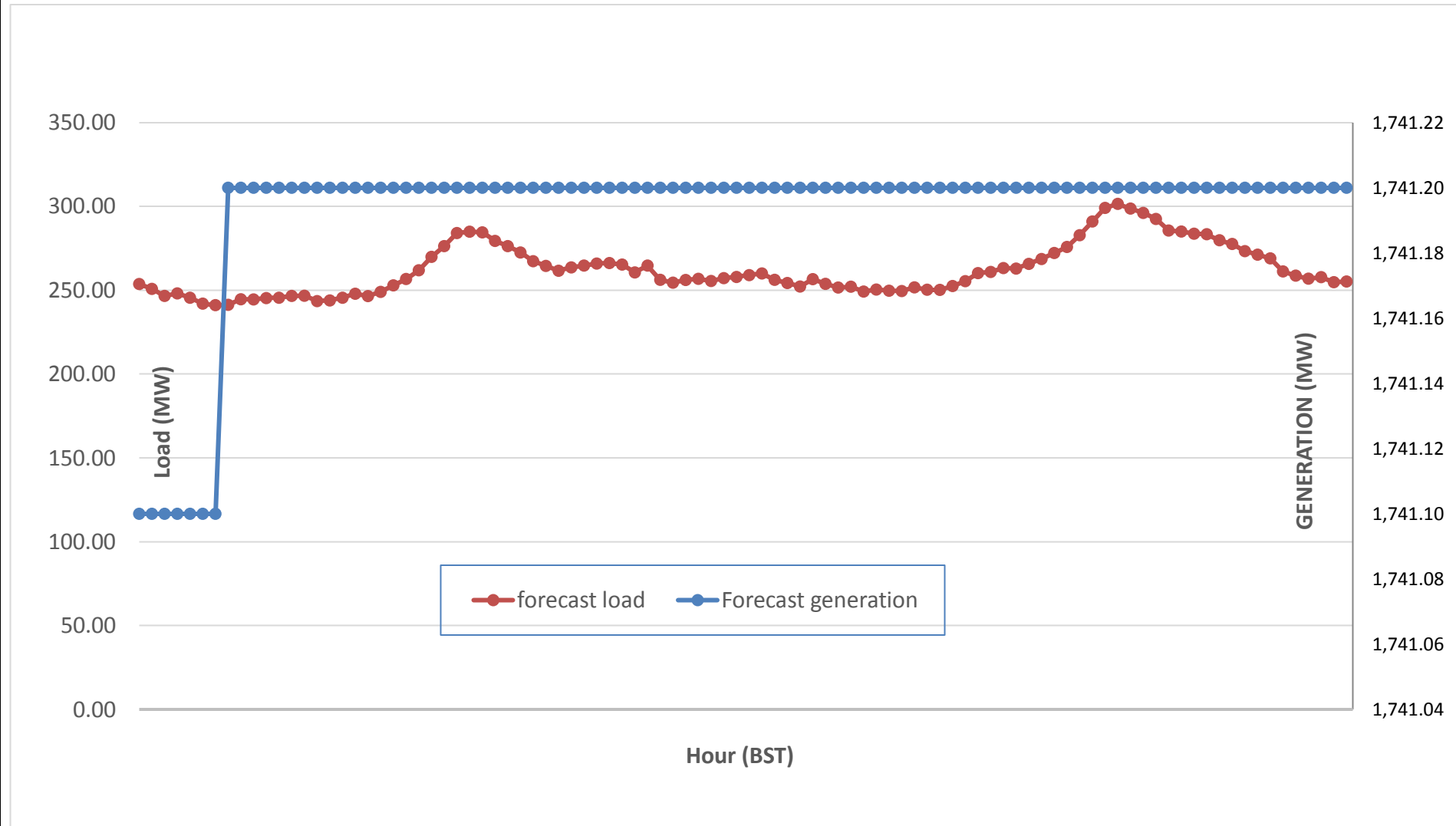
Yours faithfully,
 Sign:
 Karma Choden



Message No.: Enter your message number
 From: Shift In-charge, Control Room

Date: 23-Aug-17
 Time: 11:06

Scheduled Generation & Load Forecast for Tomorrow (24-Aug-2017).



Yours faithfully,

Sign:
Karma Choden

	MW
Scheduled Peak Generation(24-Aug-2017).	376.90
Forecast Peak Load(24-Aug-2017).	300.60