



འབྲུག་གློག་ཐོ་ལས་འཛིན།

Bhutan Power Corporation Ltd.
Bhutan Power System Operator
Thimphu: Bhutan



Message No.: Enter your message number
From: Shift In-charge, Control Room

Date: 21-Aug-17
Time: 10:01

To
Managing Director, BPC. Email: gemtshering@bpc.bt
Director, O&MD, DGPC. Email: director.omb@drukgreen.com
General Manager, TD, BPC. Email: ktobgye@bpc.bt
General Manager, DCSD, BPC. Email: sandeeprai@bpc.bt
General Manager, BPSO, BPC. Email: ujjwaldahal@bpc.bt

Sub: Load Generation Balance Report of Yesterday (20-Aug-2017).

Hours (BST)	Forecast		Actual		Hours (BST)	Forecast		Actual	
	Generation	Load	Generation	Load		Generation	Load	Generation	Load
0:00	1743.2	256.7	1735.8	260.30	12:00	1743.5	262.1	1640.3	244.80
0:15	1743.2	257.2	1735.3	262.40	12:15	1743.5	258.5	1642.5	241.60
0:30	1743.2	253.6	1735.4	250.50	12:30	1743.5	253.8	1643.5	247.80
0:45	1743.2	252.4	1731.4	255.20	12:45	1743.5	253	1642.6	252.60
1:00	1743.2	250.6	1734.9	254.00	13:00	1743.5	249.9	1641.9	250.20
1:15	1743.5	251	1736.9	251.70	13:15	1743.5	252.3	1644.9	253.40
1:30	1743.5	249.9	1733.7	249.10	13:30	1743.5	248.6	1638.8	253.10
1:45	1743.5	250.3	1732.5	254.00	13:45	1743.5	245.3	1641.5	251.80
2:00	1743.5	252.8	1734.3	249.80	14:00	1743.4	243.4	1640.7	251.00
2:15	1743.5	249.7	1731.4	252.50	14:15	1743.4	243.8	1641.6	248.50
2:30	1743.5	251	1732.9	259.60	14:30	1741.5	241.5	1642.5	247.00
2:45	1743.5	249.8	1733.3	254.70	14:45	1743.5	244.1	1643.1	241.20
3:00	1743.5	250.7	1731.2	253.00	15:00	1743.5	245.6	1643.5	256.30
3:15	1743.5	247.9	1734.8	253.50	15:15	1743.5	248.6	1642.8	248.50
3:30	1743.5	247.2	1731.8	252.00	15:30	1743.5	248.7	1641.5	253.90
3:45	1743.5	245.1	1733.6	249.10	15:45	1743.5	247.2	1643.2	255.90
4:00	1743.5	245.1	1735.1	252.20	16:00	1743.5	251.5	1644.4	258.80
4:15	1743.5	246.6	1731.9	247.70	16:15	1743.5	254	1644.2	260.10
4:30	1743.5	245.2	1732.1	255.50	16:30	1743.5	257.3	1642.5	259.60
4:45	1743.5	247.5	1734.1	257.40	16:45	1743.5	257.8	1646.7	260.60
5:00	1743.5	250.9	1734.8	249.50	17:00	1743.5	257.8	1645.1	265.40
5:15	1743.5	254.9	1735.5	255.80	17:15	1743.5	259.1	1647.1	260.90
5:30	1743.5	257.2	1733.6	259.50	17:30	1743.5	261.7	1673.9	267.20
6:45	1743.5	266.5	1738.3	271.80	17:45	1743.5	266.1	1728.6	270.20
6:00	1743.5	271.5	1733.1	274.20	18:00	1743.5	264.5	1735.7	271.30
6:15	1743.5	281.3	1734.4	270.30	18:15	1743.5	272.7	1734.0	280.00
6:30	1743.5	284	1738.5	266.10	18:30	1743.5	277	1735.1	290.80
6:45	1743.5	282.9	1736.0	271.50	18:45	1743.5	278	1734.2	302.80
7:00	1743.5	280.6	1734.2	274.40	19:00	1743.5	284.5	1731.5	303.10
7:15	1743.5	276.3	1735.6	264.50	19:15	1743.5	288.9	1733.9	306.60
7:30	1743.5	269.3	1736.7	267.30	19:30	1743.5	286.3	1734.8	300.90
7:45	1743.5	263.6	1732.8	271.80	19:45	1743.5	287.8	1735.0	294.00
8:00	1743.5	262.3	1734.6	265.10	20:00	1743.5	286.5	1729.6	293.00
8:15	1743.5	264.9	1737.5	267.20	20:15	1743.5	284	1731.8	286.00
8:30	1743.5	259.4	1733.5	263.30	20:30	1743.5	283.9	1734.1	287.80
8:45	1743.5	262.3	1735.8	264.00	20:45	1743.5	283.9	1737.7	276.00
9:00	1743.5	263.7	1733.9	262.90	21:00	1743.5	280.1	1731.3	278.10
9:15	1743.5	265.4	1731.7	262.30	21:15	1743.5	279.9	1730.1	272.90
9:30	1743.5	265.2	1732.9	257.90	21:30	1743.5	277.2	1734.0	272.50
9:45	1743.5	264	1732.9	252.50	21:45	1743.5	273.8	1729.0	265.40
10:00	1743.5	265.8	1731.7	247.70	22:00	1743.5	268.9	1735.0	257.10
10:15	1743.5	259.1	1735.0	237.30	22:15	1743.5	267.5	1728.3	255.80
10:30	1743.5	258.6	1732.5	236.60	22:30	1743.5	267.4	1732.8	251.40
10:45	1743.5	257.6	1736.5	242.90	22:45	1743.5	263.4	1732.2	251.00
11:00	1743.5	257.9	1731.4	253.10	23:00	1743.5	258	1736.2	249.60
11:15	1743.5	257.4	1729.2	254.10	23:15	1743.5	258.2	1734.7	247.50
11:30	1743.5	257.9	1723.9	251.00	23:30	1743.5	256.6	1734.0	243.00
11:45	1743.5	259.5	1638.7	249.20	23:45	1743.5	255.8	1738.8	265.34

Yours faithfully,

Sign:
Tshering Deki

Coincidental peak load of Day(Last year):	
283.35 MW	20-Aug-16
Maximum Load till date:	
344.02 MW	18-Mar-17



འབྲུག་རྒྱལ་ཁོ་ལས་འཛིན།

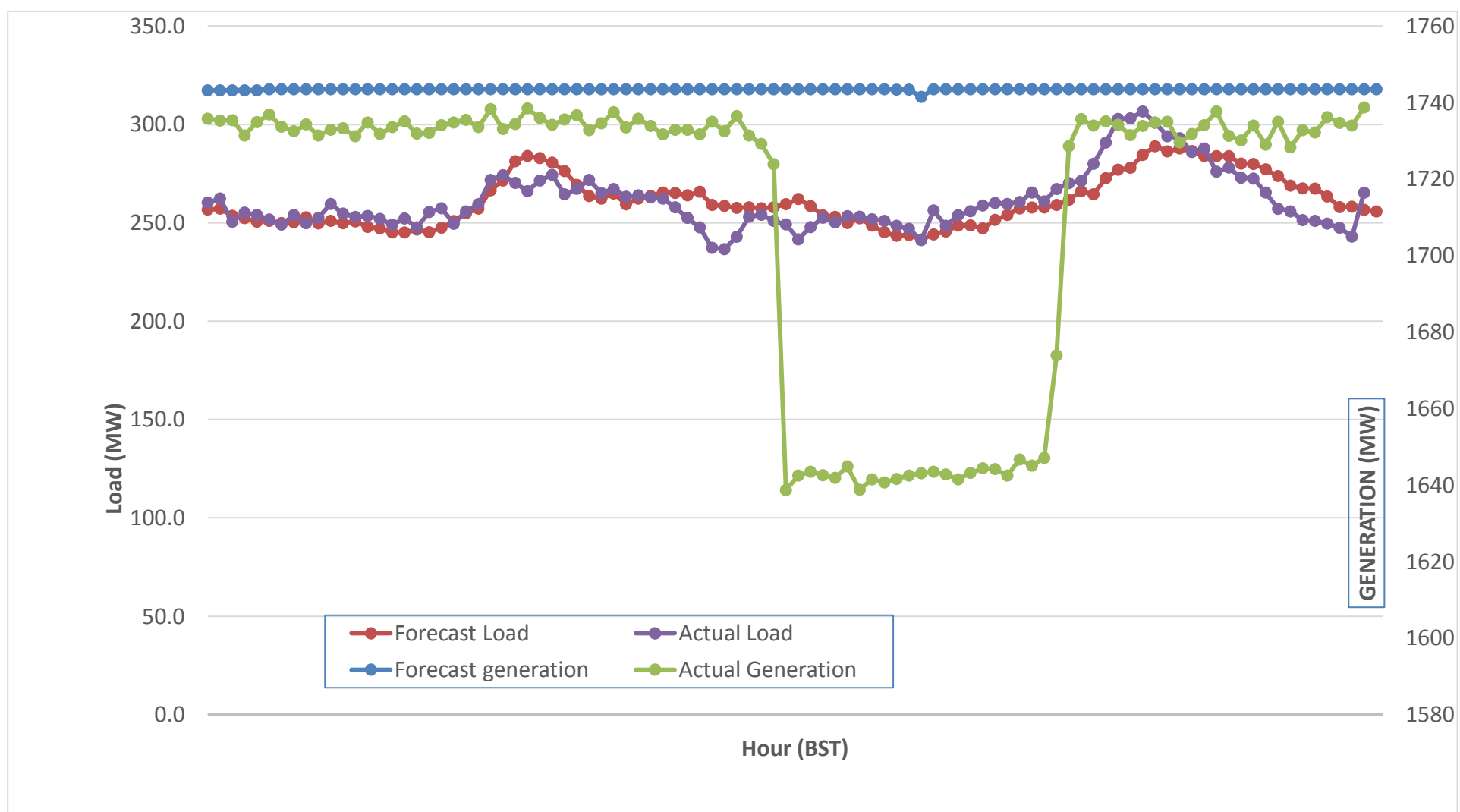
Bhutan Power Corporation Ltd.
 Bhutan Power System Operator
 Thimphu: Bhutan



Message No.: Enter your message number
 From: Shift In-charge, Control Room

Date: 21-Aug-17
 Time: 10:01

Forecast Generation & Load with Actual Generation & Load (20-Aug-2017).



Yours faithfully,

Sign:
Tshering Yangzom

	MW	Coincidental peak load of Day(Last year):	
Peak Co-incident Generation(20-Aug-2017).	1738.75	283.35 MW	20-Aug-16
Peak Co-incident Load(20-Aug-2017).	306.60	Maximum Load till date:	
		344.02 MW	18-Mar-17

Telephone: +975-02335631; Fax: +975-02335632; Email: bhutansystemoperator@bpc.bt; www.bpc.bt



འབྲུག་གྲོག་མེ་ལས་འཛིན།
Bhutan Power Corporation Ltd.
Bhutan Power System Operator
Thimphu: Bhutan



Message Enter your message number
From: Shift In-charge, Control Room

Date: 21-Aug-17
Time: 10:01

To
 Managing Director, BPC. Email: gemtsshering@bpc.bt
 Director, O&MD, DGPC. Email: director.umd@drukgreen.com
 General Manager, TD, BPC. Email: thinleygyeltshen@bpc.bt
 General Manager, DCSD, BPC. Email: sandeeprai@bpc.bt
 General Manager, BPSO, BPC. Email: ujjwaldahal@bpc.bt

Sub: Load Generation Balance Report of Today (20-Aug-2017).

Hours (BST)	Forecast		Actual	
	Generation	Load	Generation	Load
0:00	1743.8	261.7	1734.0	246.10
0:15	1743.8	258.7	1735.3	242.30
0:30	1743.8	256.8	1733.2	243.30
0:45	1743.8	258.5	1734.6	243.10
1:00	1743.8	254.8	1730.8	237.70
1:15	1743.8	254.8	1733.8	234.90
1:30	1743.8	252.2	1736.6	232.10
1:45	1743.8	251.3	1732.8	232.60
2:00	1743.8	253	1732.3	232.50
2:15	1743.8	250.7	1730.4	235.40
2:30	1743.8	253	1733.9	231.30
2:45	1743.8	251.9	1734.0	235.90
3:00	1743.8	255.1	1734.8	240.20
3:15	1743.8	253.1	1734.2	239.70
3:30	1743.8	251.6	1732.8	235.50
3:45	1743.8	248.7	1734.8	238.80
4:00	1743.8	247	1732.3	239.40
4:15	1743.8	247.4	1733.7	242.10
4:30	1743.8	249.8	1738.9	243.10
4:45	1743.8	250.4	1735.7	243.90
5:00	1743.8	255.3	1732.7	247.70
5:15	1743.8	258.7	1732.7	252.30
5:30	1743.8	261.7	1735.0	257.80
5:45	1743.8	270.1	1736.7	267.00
6:00	1743.8	273.9	1735.9	274.50
6:15	1743.8	284.2	1738.3	281.10
6:30	1743.8	286	1732.6	283.60
6:45	1743.8	285.9	1735.2	284.50
7:00	1743.8	284.5	1738.6	279.40
7:15	1743.8	280.5	1734.4	272.20
7:30	1743.8	275	1735.7	274.30
7:45	1743.8	268.3	1733.2	268.70
8:00	1743.8	264.5	1732.2	265.10
8:15	1743.4	265.3	1737.6	266.60
8:30	1743.4	264	1736.5	263.10
8:45	1743.4	266.3	1734.0	261.20
9:00	1743.4	268.3	1736.8	260.10

REMARKS WLDC and ELDC link Down from 08:53HRS

Coincidental peak load of Day(Last year):	
266.43	21-Aug-17

258.23 MW	
344.02 MW	18-Mar-17

Yours faithfully,

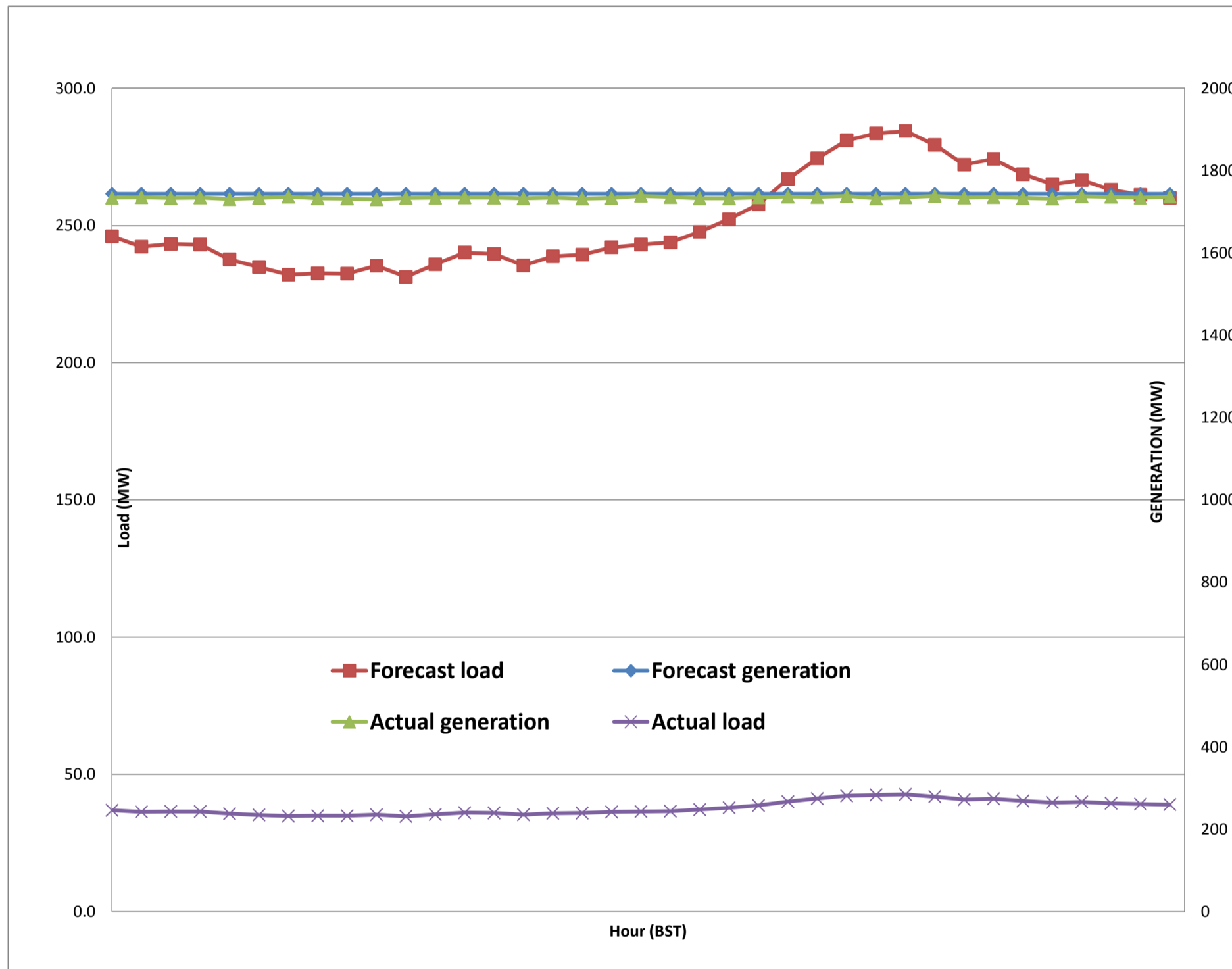
Sign:
 Tshering Yangzom



Message No.: Enter your message number
 From: Shift In-charge, Control Room

Date: 21-Aug-17
 Time: 10:01

Forecast Generation & Load with Actual Generation & Load of Today from 00:00hrs to 09:00hrs(21-Aug-2017).





འབྲུག་གྲོག་ལས་ཁུངས་ལྷན་ཁག།
Bhutan Power Corporation Ltd.
Bhutan Power System Operator
 Thimphu: Bhutan



Message No.: Enter your message number
From: Shift In-charge, Control Room
Date: 21-Aug-17
Time: 10:01
To: Managing Director, BPC. Email: gemtshering@bpc.bt
 Director, O&MD, DGPC. Email: director.umd@drukgreen.com
 General Manager, TD, BPC. Email: ktobgye@bpc.bt
 General Manager, BPSO, BPC. Email: ujjwaldahal@bpc.bt
 Advisor, BPC. Email: bharattamang@bpc.bt
Sub: Load Generation Balance Report of Tomorrow (22-Aug-2017).

 ###

Hours (BST)	Forecast		Hours (BST)	Forecast	
	Generation	Load		Generation	Load
0:00	1731.5	259.80	12:00	1731.5	255.2
0:15	1731.5	258.40	12:15	1731.5	255.1
0:30	1731.5	253.30	12:30	1731.5	251.7
0:45	1731.5	256.40	12:45	1731.5	251.9
1:00	1731.5	253.30	13:00	1731.5	250.5
1:15	1731.5	250.70	13:15	1731.5	255.4
1:30	1731.5	249.90	13:30	1731.5	250.5
1:45	1731.5	249.40	13:45	1731.5	248.5
2:00	1731.5	252.00	14:00	1731.5	246.9
2:15	1731.5	250.70	14:15	1731.5	246.7
2:30	1731.5	253.30	14:30	1731.5	246.5
2:45	1731.5	251.30	14:45	1731.5	248.9
3:00	1731.5	253.00	15:00	1731.5	247.1
3:15	1731.5	251.70	15:15	1731.5	252.9
3:30	1731.5	249.60	15:30	1731.5	249.9
3:45	1731.5	247.10	15:45	1731.5	251.1
4:00	1731.5	246.80	16:00	1731.5	252
4:15	1731.5	248.10	16:15	1731.5	253.2
4:30	1731.5	247.90	16:30	1731.5	255.4
4:45	1731.5	250.40	16:45	1731.5	257.9
5:00	1731.5	254.20	17:00	1731.5	258.9
5:15	1731.5	257.30	17:15	1731.5	260.1
5:30	1731.5	261.00	17:30	1731.5	262.4
6:00	1731.5	269.90	17:45	1731.5	267.1
6:15	1731.5	272.70	18:00	1731.5	269
6:30	1731.5	280.30	18:15	1731.5	276.6
6:45	1731.5	280.70	18:30	1731.5	282.4
7:00	1731.5	282.00	18:45	1731.5	288.9
7:15	1731.5	280.60	19:00	1731.5	296.6
7:30	1731.5	276.10	19:15	1731.5	300.4
7:45	1731.5	271.10	19:30	1731.5	299.5
8:00	1731.5	267.40	19:45	1731.5	296.6
8:15	1731.5	264.50	20:00	1731.5	294
8:30	1731.5	264.20	20:15	1731.5	291
8:45	1731.5	263.80	20:30	1731.5	289.3
9:00	1731.5	264.90	20:45	1731.5	289.1
9:15	1731.5	266.20	21:00	1731.5	284.5
9:30	1731.5	266.00	21:15	1731.5	280
9:45	1731.5	264.80	21:30	1731.5	278.1
10:00	1731.5	258.70	21:45	1731.5	275
10:15	1731.5	263.50	22:00	1731.5	274
10:30	1731.5	255.90	22:15	1731.5	269.6
10:45	1731.5	252.50	22:30	1731.5	266
11:00	1731.5	253.30	22:45	1731.5	263.2
11:15	1731.5	256.90	23:00	1731.5	259
11:30	1731.5	256.20	23:15	1731.5	259.7
11:45	1731.5	256.20	23:30	1731.5	255.5
			23:45	1731.5	255.6

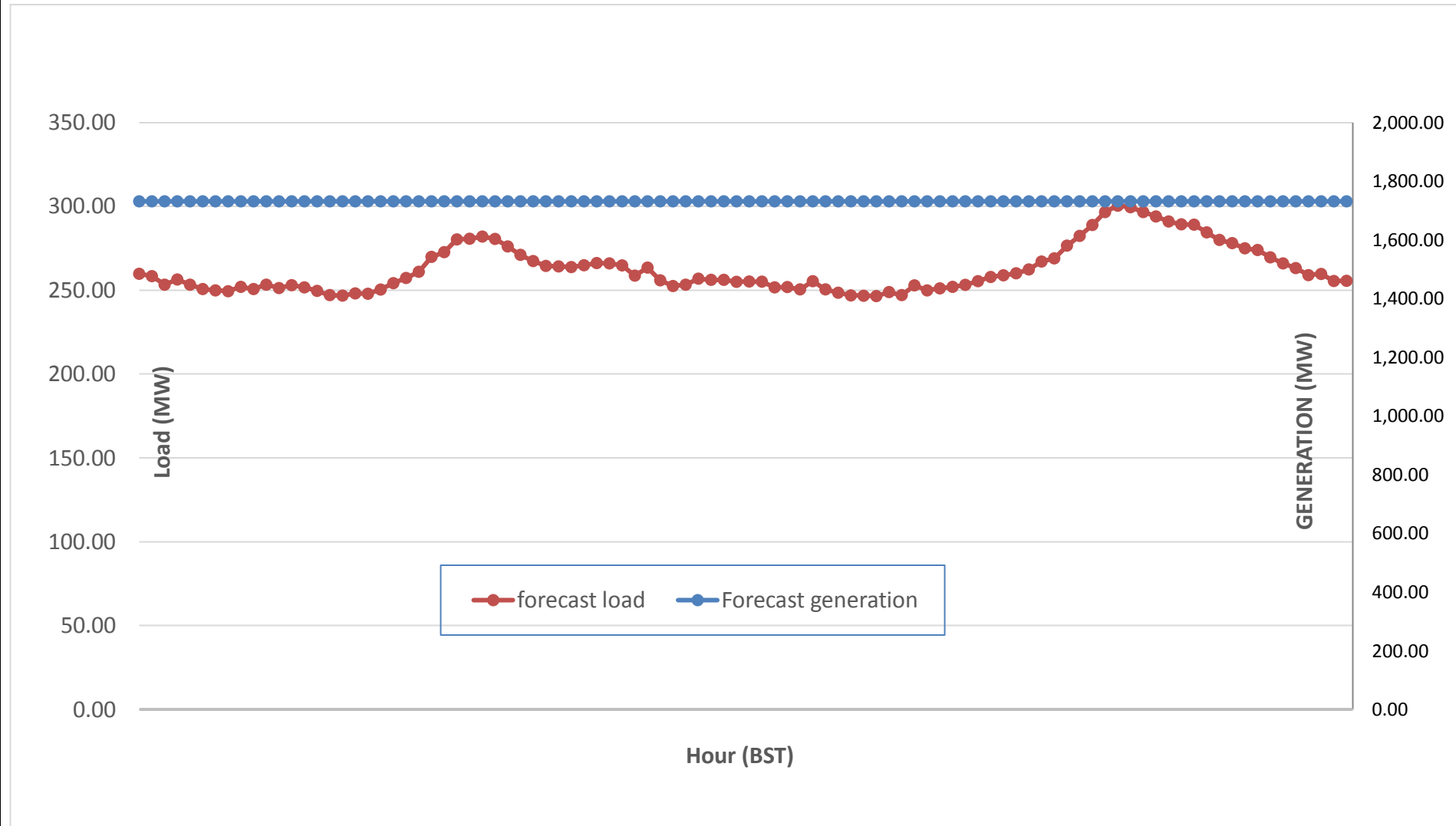
Yours faithfully,
 Sign:
 Tshering Yangzom



Message No.: Enter your message number
 From: Shift In-charge, Control Room

Date: 21-Aug-17
 Time: 10:01

Scheduled Generation & Load Forecast for Tomorrow (22-Aug-2017).



Yours faithfully,

Sign:
Tshering Yangzom

	MW
Scheduled Peak Generation(22-Aug-2017).	376.90
Forecast Peak Load(22-Aug-2017).	300.60