



འབྲུག་གློག་ལེ་ལས་འཛིན།

Bhutan Power Corporation Ltd.
Bhutan Power System Operator
Thimphu: Bhutan



Message No.: Enter your message number
From: Shift In-charge, Control Room

Date: 17-Aug-17
Time: 10:39

To
Managing Director, BPC. Email: gemtshering@bpc.bt
Director, O&MD, DGPC. Email: director.umd@drukgreen.com
General Manager, TD, BPC. Email: ktobgye@bpc.bt
General Manager, DCSD, BPC. Email: sandeeprai@bpc.bt
General Manager, BPSO, BPC. Email: ujjwaldahal@bpc.bt

Sub: Load Generation Balance Report of Yesterday (16-Aug-2017).

Hours (BST)	Forecast		Actual		Hours (BST)	Forecast		Actual	
	Generation	Load	Generation	Load		Generation	Load	Generation	Load
0:00	1728.9	247.4	1732.8	271.63	12:00	1728.9	264.3	1737.1	270.49
0:15	1728.9	247.1	1732.7	272.38	12:15	1728.9	266.4	1737.4	266.35
0:30	1728.9	243.9	1732.7	274.00	12:30	1728.9	264.3	1734.4	252.05
0:45	1728.9	239.2	1734.2	251.79	12:45	1728.9	263.3	1735.4	250.54
1:00	1728.9	243.3	1733.6	253.21	13:00	1728.9	258	1734.1	251.95
1:15	1728.9	244.6	1737.3	246.65	13:15	1728.9	258.4	1735.5	258.69
1:30	1728.9	242.2	1736.6	247.27	13:30	1728.9	255.6	1733.5	247.33
1:45	1728.9	242.4	1737.3	246.10	13:45	1728.9	250.8	1732.1	232.07
2:00	1728.9	245.5	1733.8	244.36	14:00	1728.9	250.4	1737.0	241.75
2:15	1728.9	246.2	1738.2	247.28	14:15	1728.9	246.7	1731.7	240.57
2:30	1728.9	246.7	1738.2	242.55	14:30	1728.9	244.8	1735.6	249.59
2:45	1728.9	242.7	1737.9	241.99	14:45	1728.9	243.6	1732.3	246.30
3:00	1728.9	244.7	1738.0	244.37	15:00	1728.9	245.5	1738.7	246.77
3:15	1728.9	241.6	1735.2	248.73	15:15	1728.9	245.9	1734.9	248.40
3:30	1728.9	236.5	1737.2	249.82	15:30	1728.9	246.4	1736.2	247.24
3:45	1728.9	238.4	1737.5	245.97	15:45	1728.9	242.5	1733.1	249.25
4:00	1728.9	236.3	1736.4	245.43	16:00	1728.9	242.1	1734.7	246.98
4:15	1728.9	240.4	1738.7	248.31	16:15	1728.9	241.4	1735.7	243.01
4:30	1728.9	238.1	1734.2	251.99	16:30	1728.9	244.4	1735.4	248.71
4:45	1728.9	238.1	1738.5	255.23	16:45	1728.9	244.9	1734.2	248.31
5:00	1728.9	238.4	1735.3	257.44	17:00	1728.9	243.6	1735.5	252.81
5:15	1728.9	243.6	1735.7	260.41	17:15	1728.9	248.3	1735.4	261.63
5:30	1728.9	243.2	1730.8	262.99	17:30	1728.9	253.1	1736.8	265.13
6:45	1728.9	248.7	1734.2	263.75	17:45	1728.9	252.3	1734.5	269.18
6:00	1728.9	258.5	1735.2	267.29	18:00	1728.9	252.4	1735.4	277.45
6:15	1728.9	265.9	1733.1	276.55	18:15	1728.9	256.2	1736.5	278.76
6:30	1728.9	268.7	1735.0	300.14	18:30	1728.9	260.3	1734.8	281.65
6:45	1728.9	268.3	1735.1	302.36	18:45	1728.9	262.2	1733.3	283.25
7:00	1728.9	265.4	1735.0	303.90	19:00	1728.9	264.3	1736.7	286.51
7:15	1728.9	260.5	1735.8	295.87	19:15	1728.9	268.9	1734.1	291.93
7:30	1728.9	255.8	1737.5	284.91	19:30	1728.9	268.9	1735.9	293.13
7:45	1728.9	255.3	1735.2	265.23	19:45	1728.9	272.7	1734.9	290.23
8:00	1728.9	256.5	1732.8	271.48	20:00	1728.9	270.8	1735.9	277.62
8:15	1728.9	257.1	1734.4	265.22	20:15	1728.9	272.2	1737.7	286.05
8:30	1728.9	254.4	1735.3	258.80	20:30	1728.9	272	1743.5	278.57
8:45	1728.9	249.5	1733.9	262.45	20:45	1728.9	267.9	1739.7	282.55
9:00	1728.9	250.7	1733.0	263.48	21:00	1728.9	267.3	1733.1	266.75
9:15	1728.9	255.2	1732.1	267.15	21:15	1728.9	267.7	1734.8	278.93
9:30	1728.9	253.2	1729.4	266.35	21:30	1728.9	267	1737.3	263.10
9:45	1728.9	256.9	1732.5	264.71	21:45	1728.9	261.5	1734.3	258.21
10:00	1728.9	255.9	1731.6	267.63	22:00	1728.9	270.1	1735.6	250.34
10:15	1728.9	255	1737.9	267.88	22:15	1728.9	270	1738.4	247.77
10:30	1728.9	254	1738.3	267.72	22:30	1728.9	259.1	1733.8	247.07
10:45	1728.9	256.1	1739.3	265.58	22:45	1728.9	257	1736.1	239.58
11:00	1728.9	257.9	1736.5	263.13	23:00	1728.9	255.7	1736.6	240.25
11:15	1728.9	260.5	1735.6	241.62	23:15	1728.9	257.6	1736.4	245.34
11:30	1728.9	261	1731.2	261.27	23:30	1728.9	252.9	1740.3	243.10
11:45	1728.9	261.6	1733.2	268.17	23:45	1728.9	252.4	1736.4	235.55

Yours faithfully,

Sign:
Phub Zam

Coincidental peak load of Day(Last year):	
278.91	16-Aug-16
Maximum Load till date:	
344.02 MW	18-Mar-17



འབྲུག་རྒྱལ་ཁོ་ལས་འཛིན།

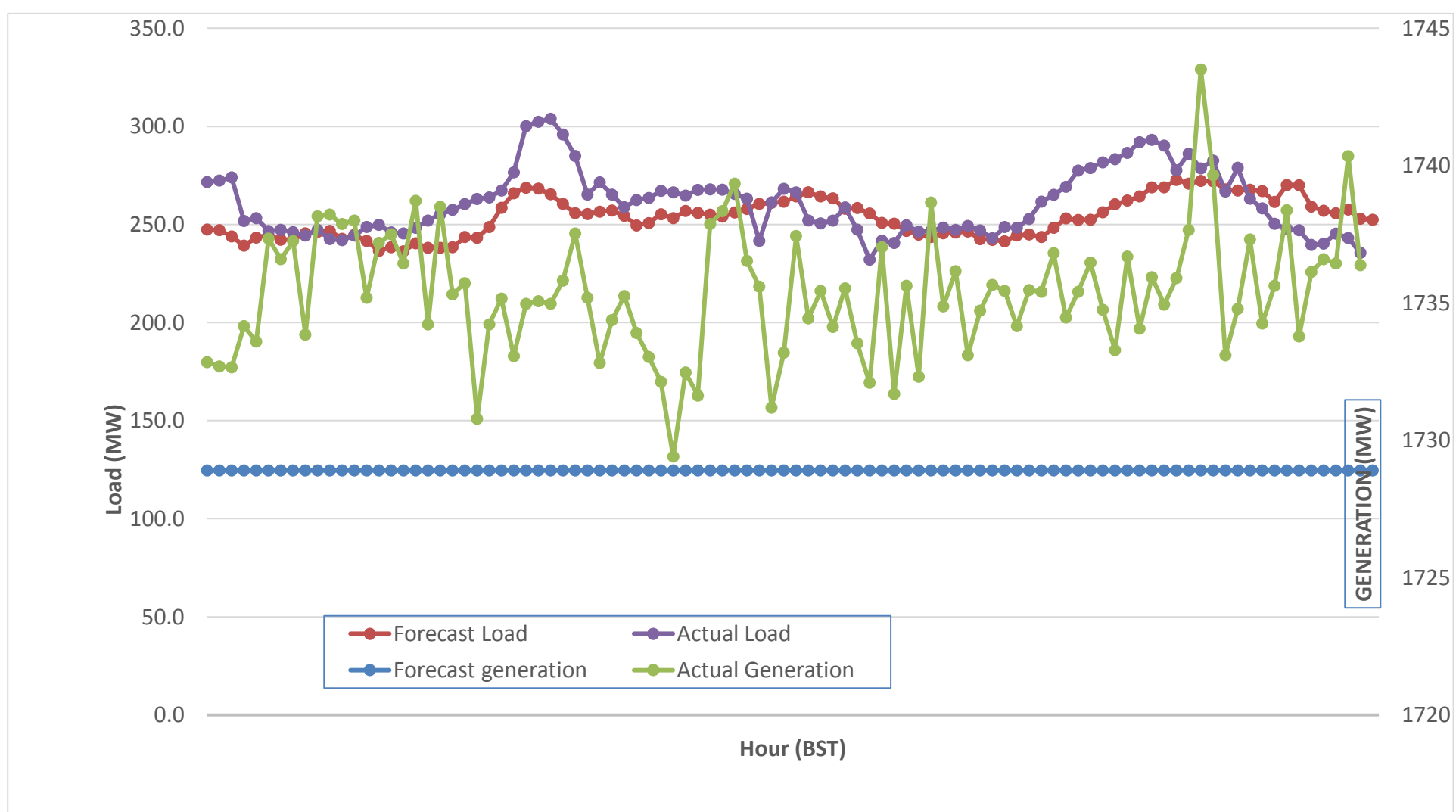
Bhutan Power Corporation Ltd.
 Bhutan Power System Operator
 Thimphu: Bhutan



Message No.: Enter your message number
 From: Shift In-charge, Control Room

Date: 16-Aug-17
 Time: 10:34

Forecast Generation & Load with Actual Generation & Load (15-Aug-2017).



Yours faithfully,

Sign:
Phub Zam

	MW
Peak Co-incident Generation(15-Aug-2017).	1743.50
Peak Co-incident Load(15-Aug-2017).	303.90

Coincidental peak load of Day(Last year):	
278.91	16-Aug-16
Maximum Load till date:	
344.02 MW	18-Mar-17

Telephone: +975-02335631; Fax: +975-02335632; Email: bhutansystemoperator@bpc.bt; www.bpc.bt



ལྷན་སྐྱོང་གི་ལས་འཛིན།

Bhutan Power Corporation Ltd.
Bhutan Power System Operator
Thimphu: Bhutan



Message No.: Enter your message number
From: Shift In-charge, Control Room

Date: 16-Aug-17
Time: 10:34

To

Managing Director, BPC. Email: gemtshering@bpc.bt
Director, O&MD, DGPC. Email: director.omb@drukgreen.com
General Manager, TD, BPC. Email: thinleygyeltshen@bpc.bt
General Manager, DCSD, BPC. Email: sandeprai@bpc.bt
General Manager, BPSO, BPC. Email: ujjwaldahal@bpc.bt

Sub:

Load Generation Balance Report of Today (16-Aug-2017).

Hours (BST)	Forecast		Actual	
	Generation	Load	Generation	Load
0:00	1727.3	251.8	1737.1	240.25
0:15	1727.3	251.8	1735.3	239.26
0:30	1727.3	250.1	1737.8	240.96
0:45	1727.3	246.5	1737.3	242.60
1:00	1727.3	248.8	1735.8	239.50
1:15	1727.3	249.3	1740.4	244.81
1:30	1727.3	246	1736.8	247.07
1:45	1727.3	246.8	1737.6	246.24
2:00	1727.3	249.5	1735.1	247.11
2:15	1727.3	247.6	1734.3	249.13
2:30	1727.3	249.9	1737.0	247.72
2:45	1727.3	247.1	1734.5	250.09
3:00	1727.3	248.8	1737.1	243.34
3:15	1727.3	246.9	1733.9	242.98
3:30	1727.3	241.7	1738.6	243.13
3:45	1727.3	244.2	1736.6	243.51
4:00	1727.3	242.1	1735.9	236.50
4:15	1727.3	246	1739.2	239.32
4:30	1727.3	243.7	1731.8	241.61
4:45	1727.3	243.7	1737.5	243.47
5:00	1727.3	244.1	1736.6	253.98
5:15	1727.3	249.6	1731.2	254.91
5:30	1727.3	249.8	1737.4	259.23
5:45	1727.3	256.6	1738.2	273.69
6:00	1727.3	264.6	1737.4	285.20
6:15	1727.3	270.1	1734.9	289.05
6:30	1727.3	271	1735.9	295.45
6:45	1727.3	269.8	1739.6	289.30
7:00	1727.3	267.2	1737.6	291.75
7:15	1727.3	262.8	1736.2	282.41
7:30	1727.3	259.3	1731.2	276.83
7:45	1727.3	258.3	1738.6	265.66
8:00	1727.3	259.1	1737.1	260.78
8:15	1695.3	259	1703.9	264.67
8:30	1695.3	260.7	1697.7	259.69
8:45	1695.3	258.5	1702.6	259.71
9:00	1695.3	258.1	1702.1	267.22

Coincidental peak load of Day(Last year):	
271.65	16-Aug-17
258.23 MW	
344.02 MW	18-Mar-17

Yours faithfully,

Sign:
Phub Zam

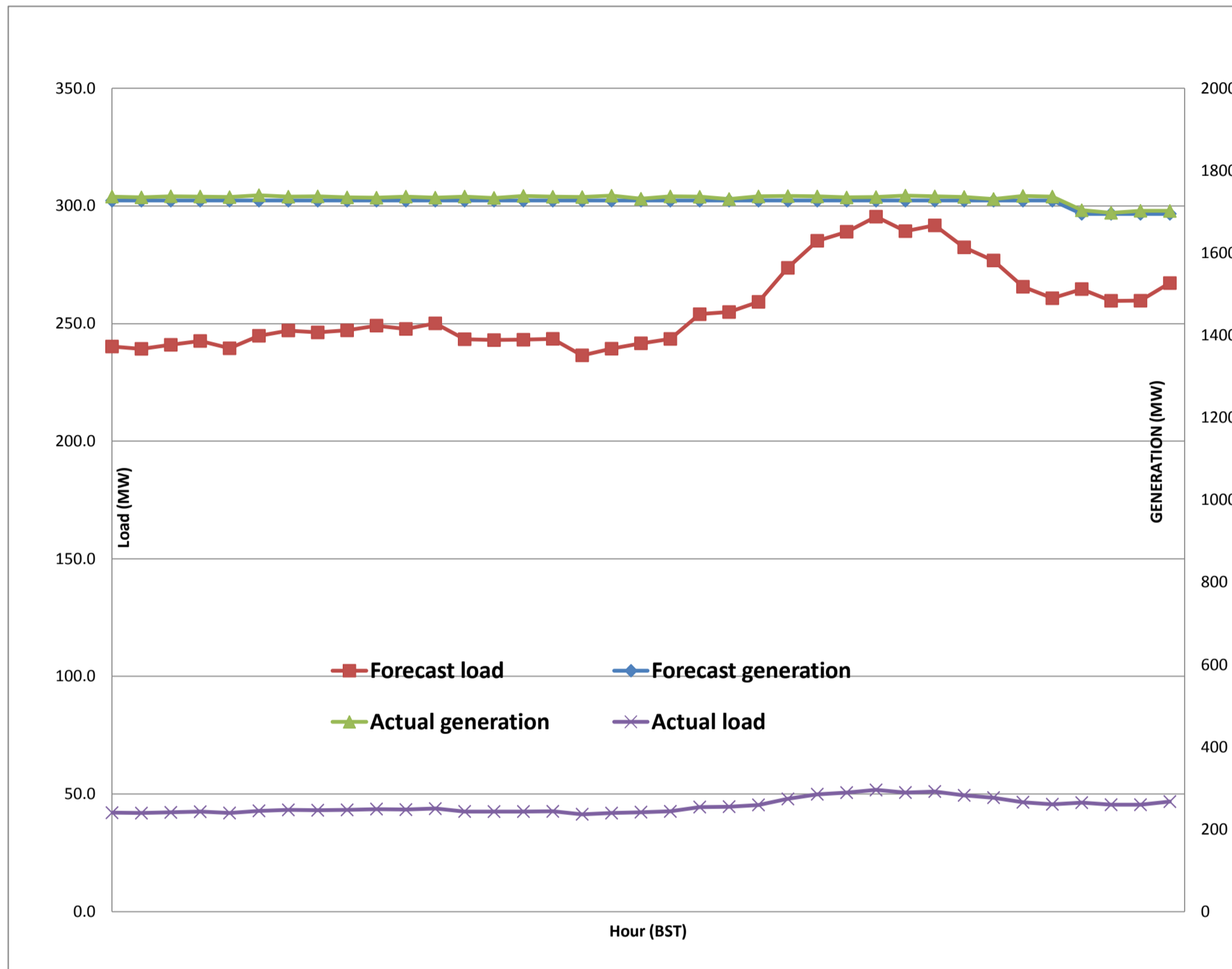
Telephone: +975-02335631; Fax: +975-02335632; Email: bhutansystemoperator@bpc.bt; www.bpc.bt



Message No.: Enter your message number
 From: Shift In-charge, Control Room

Date: 17-Aug-17
 Time: 10:39

Forecast Generation & Load with Actual Generation & Load of Today from 00:00hrs to 09:00hrs(17-Aug-2017).





འབྲུག་གྲོག་ལས་ཁུངས་ལྷན་ཁག།
Bhutan Power Corporation Ltd.
Bhutan Power System Operator
 Thimphu: Bhutan



Message No.: Enter your message number
From: Shift In-charge, Control Room

Date: 17-Aug-17
Time: 10:39

 ###

To
 Managing Director, BPC. Email: gemtshering@bpc.bt
 Director, O&MD, DGPC. Email: director.umd@drukgreen.com
 General Manager, TD, BPC. Email: ktobgye@bpc.bt
 General Manager, BPSO, BPC. Email: ujjwaldahal@bpc.bt
 Advisor, BPC. Email: bharattamang@bpc.bt

Sub: Load Generation Balance Report of Tomorrow (18-Aug-2017).

Hours (BST)	Forecast		Hours (BST)	Forecast	
	Generation	Load		Generation	Load
0:00	1728.6	257.70	12:00	1696.7	267.8
0:15	1728.6	257.60	12:15	1696.7	267.2
0:30	1728.6	251.10	12:30	1696.7	263.2
0:45	1728.6	248.80	12:45	1696.7	260.8
1:00	1728.6	249.80	13:00	1696.7	257.8
1:15	1728.6	249.40	13:15	1696.7	260.3
1:30	1728.6	246.60	13:30	1696.7	255.1
1:45	1728.6	246.30	13:45	1696.7	246.6
2:00	1728.6	249.00	14:00	1696.7	248.7
2:15	1728.6	247.40	14:15	1696.7	248.2
2:30	1728.6	248.10	14:30	1696.7	246.1
2:45	1728.6	246.20	14:45	1696.7	246.7
3:00	1728.6	248.00	15:00	1696.7	246.6
3:15	1728.6	246.00	15:15	1696.7	248.6
3:30	1728.6	243.70	15:30	1696.7	249.1
3:45	1728.6	244.20	15:45	1696.7	247.8
4:00	1728.6	243.30	16:00	1696.7	247.7
4:15	1728.6	245.80	16:15	1696.7	245.6
4:30	1728.6	245.70	16:30	1696.7	250
4:45	1728.6	247.10	16:45	1696.7	248.9
5:00	1728.6	248.00	17:00	1696.7	250.3
5:15	1728.6	252.70	17:15	1696.7	254.9
5:30	1728.6	253.50	17:30	1696.7	264
6:45	1728.6	258.00	17:45	1696.7	265.3
6:00	1728.6	265.00	18:00	1696.7	268.4
6:15	1728.6	273.10	18:15	1728.6	271.4
6:30	1728.6	278.50	18:30	1728.6	278.5
6:45	1728.6	278.00	18:45	1728.6	281.9
7:00	1728.6	275.50	19:00	1728.6	285.3
7:15	1728.6	269.60	19:15	1728.6	287.7
7:30	1728.6	265.00	19:30	1728.6	286.6
7:45	1728.6	259.50	19:45	1728.6	288.6
8:00	1696.7	263.40	20:00	1728.6	285.9
8:15	1696.7	262.30	20:15	1728.6	285.9
8:30	1696.7	260.90	20:30	1728.6	285.9
8:45	1696.7	260.20	20:45	1728.6	284.8
9:00	1696.7	260.50	21:00	1728.6	280.7
9:15	1696.7	263.70	21:15	1728.6	283.4
9:30	1696.7	261.60	21:30	1728.6	278
9:45	1696.7	264.60	21:45	1728.6	273
10:00	1696.7	264.40	22:00	1728.6	274.4
10:15	1696.7	262.20	22:15	1728.6	273.9
10:30	1696.7	261.90	22:30	1728.6	265.9
10:45	1696.7	262.20	22:45	1728.6	264.2
11:00	1696.7	262.00	23:00	1728.6	257.1
11:15	1696.7	259.10	23:15	1728.6	259.2
11:30	1696.7	264.30	23:30	1728.6	256.4
11:45	1696.7	265.20	23:45	1728.6	254.8

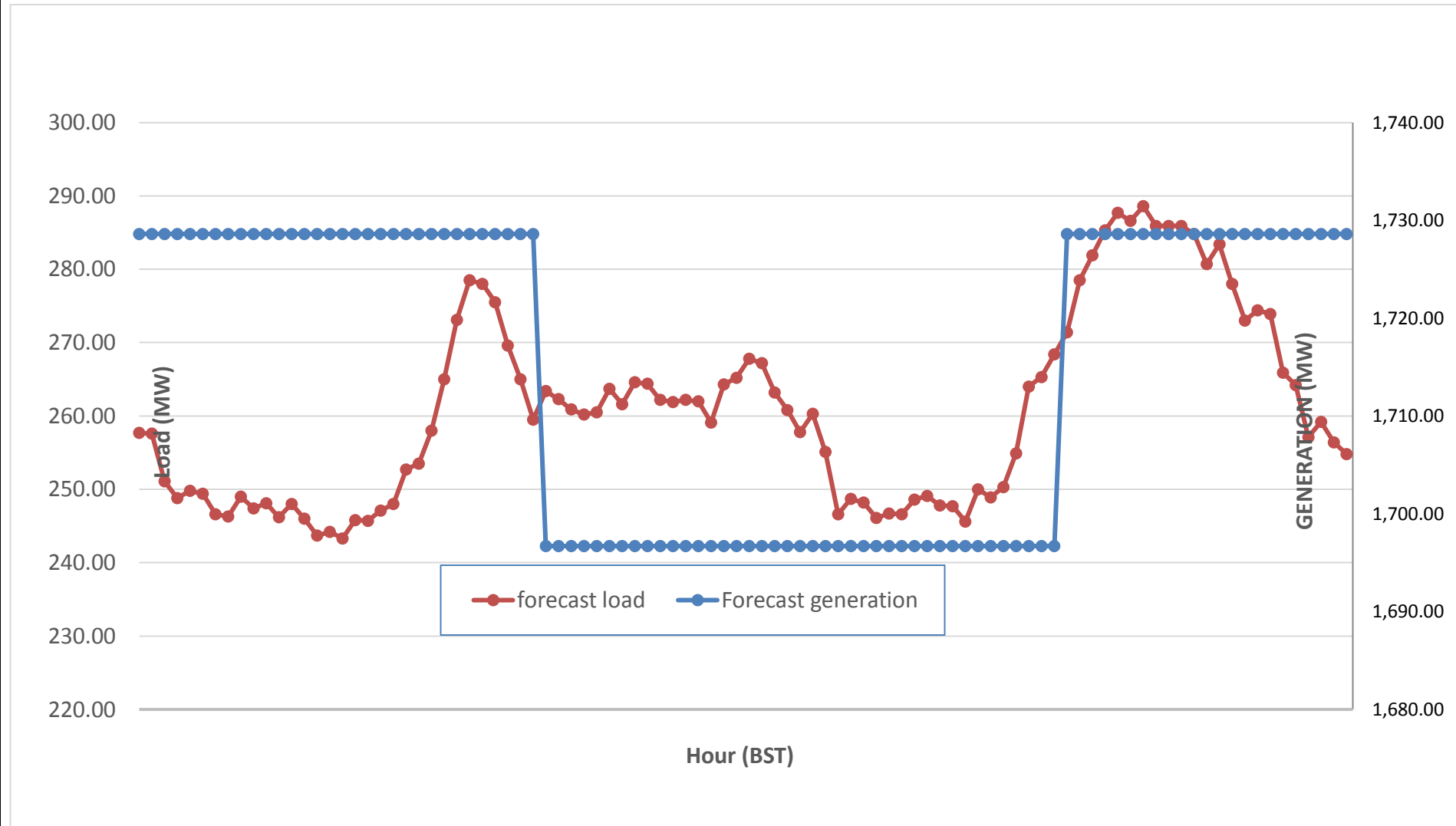
Yours faithfully,
 Sign:
 Phub Zam



Message No.: Enter your message number
 From: Shift In-charge, Control Room

Date: 16-Aug-17
 Time: 10:34

Scheduled Generation & Load Forecast for Tomorrow (17-Aug-2017).



Yours faithfully,

Sign:
Phub Zam

	MW
Scheduled Peak Generation(17-Aug-2017).	376.90
Forecast Peak Load(17-Aug-2017).	300.60