



འབྲུག་གླིང་གི་ལམ་འཛིན།

Bhutan Power Corporation Ltd.
Bhutan Power System Operator
Thimphu: Bhutan



Message No.: Enter your message number
From: Shift In-charge, Control Room

Date: 16-Aug-17
Time: 10:34

To
Managing Director, BPC. Email: gemtshering@bpc.bt
Director, O&MD, DGPC. Email: director.umd@drukgreen.com
General Manager, TD, BPC. Email: ktobgye@bpc.bt
General Manager, DCSD, BPC. Email: sandeeprai@bpc.bt
General Manager, BPSO, BPC. Email: ujjwaldahal@bpc.bt

Sub: Load Generation Balance Report of Yesterday (15-Aug-2017).

Hours (BST)	Forecast		Actual		Hours (BST)	Forecast		Actual	
	Generation	Load	Generation	Load		Generation	Load	Generation	Load
0:00	1720.5	255.2	1733.7	263.59	12:00	1720.5	262.7	1736.0	266.98
0:15	1720.5	253.4	1733.8	268.02	12:15	1720.5	264.5	1736.0	266.98
0:30	1720.5	252.4	1737.5	268.52	12:30	1720.5	262.2	1735.1	266.51
0:45	1720.5	248.7	1733.7	269.22	12:45	1720.5	262.6	1733.4	255.26
1:00	1720.5	248.5	1734.0	267.20	13:00	1720.5	259.6	1733.9	256.91
1:15	1720.5	248.3	1733.4	261.88	13:15	1720.5	258.5	1733.3	256.36
1:30	1720.5	243.8	1733.8	256.84	13:30	1720.5	254.3	1733.7	257.13
1:45	1720.5	245.2	1734.1	257.73	13:45	1720.5	250.5	1733.3	249.45
2:00	1720.5	250.1	1734.0	258.46	14:00	1720.5	250.2	1736.2	249.83
2:15	1720.5	249.4	1734.3	251.34	14:15	1720.5	245.5	1732.9	242.20
2:30	1720.5	253	1731.3	255.36	14:30	1720.5	242.9	1738.3	240.84
2:45	1720.5	249.2	1732.1	257.14	14:45	1720.5	240	1735.1	243.65
3:00	1720.5	249.7	1735.9	257.41	15:00	1720.5	242	1738.8	248.55
3:15	1720.5	245.4	1737.6	262.52	15:15	1720.5	244.1	1739.2	248.24
3:30	1720.5	238.4	1735.0	256.91	15:30	1720.5	241.6	1734.6	249.66
3:45	1720.5	240.9	1736.8	260.71	15:45	1720.5	243	1738.0	254.46
4:00	1720.5	237.6	1735.5	258.86	16:00	1720.5	243.5	1734.3	259.41
4:15	1720.5	242.7	1734.0	261.58	16:15	1720.5	243	1740.2	254.99
4:30	1720.5	238.7	1733.9	258.63	16:30	1720.5	246.6	1740.2	254.99
4:45	1720.5	242.4	1736.3	264.77	16:45	1720.5	246.5	1740.2	254.99
5:00	1720.5	238.6	1733.4	256.11	17:00	1720.5	246.3	1739.5	258.23
5:15	1720.5	244	1732.3	266.98	17:15	1720.5	251.6	1736.8	261.30
5:30	1720.5	245.8	1732.6	268.52	17:30	1720.5	253.9	1737.8	287.71
6:45	1720.5	251.5	1732.6	278.88	17:45	1720.5	254.6	1735.2	292.68
6:00	1720.5	256.8	1733.0	281.19	18:00	1720.5	256.2	1739.2	300.86
6:15	1720.5	263.8	1733.0	280.17	18:15	1720.5	260	1737.0	306.51
6:30	1720.5	265.4	1733.3	278.21	18:30	1720.5	261.8	1739.3	321.67
6:45	1720.5	265.5	1733.0	271.27	18:45	1720.5	262.8	1740.4	331.87
7:00	1720.5	262.3	1733.0	270.02	19:00	1720.5	265.9	1736.1	339.57
7:15	1720.5	258.6	1732.2	268.01	19:15	1720.5	269.2	1739.7	342.25
7:30	1720.5	253.7	1732.3	268.05	19:30	1720.5	269.2	1737.7	342.26
7:45	1720.5	256.1	1732.3	266.84	19:45	1720.5	274	1735.1	335.74
8:00	1720.5	258.3	1732.0	265.48	20:00	1720.5	270.4	1735.9	334.09
8:15	1720.5	259.1	1731.6	263.44	20:15	1720.5	272.4	1739.3	327.06
8:30	1720.5	255.6	1732.1	281.67	20:30	1720.5	270.5	1739.8	332.80
8:45	1720.5	256.7	1731.1	281.20	20:45	1720.5	268.3	1738.3	328.98
9:00	1720.5	257.4	1730.6	284.70	21:00	1720.5	268	1737.9	328.52
9:15	1720.5	256.7	1735.1	283.64	21:15	1720.5	266.7	1734.0	328.95
9:30	1720.5	254	1733.8	281.51	21:30	1720.5	266.4	1736.8	328.25
9:45	1720.5	257	1734.0	283.60	21:45	1720.5	261.5	1738.0	321.10
10:00	1720.5	257.3	1733.3	284.27	22:00	1720.5	256.1	1736.8	319.49
10:15	1720.5	255.8	1733.6	268.02	22:15	1720.5	258.2	1735.2	310.73
10:30	1720.5	254.4	1731.3	272.30	22:30	1720.5	255.3	1736.3	306.22
10:45	1720.5	256.3	1737.6	273.21	22:45	1720.5	252.7	1734.6	306.76
11:00	1720.5	256.5	1738.9	272.91	23:00	1720.5	253.8	1733.5	271.64
11:15	1720.5	258.8	1738.8	273.99	23:15	1720.5	254.2	1733.4	271.60
11:30	1720.5	259.1	1738.8	272.66	23:30	1720.5	249.1	1733.3	275.30
11:45	1720.5	259.8	1736.0	266.98	23:45	1720.5	248.3	1733.3	274.13

Yours faithfully,

Sign:
Tshering Choden

Coincidental peak load of Day(Last year):	
275.03 MW	15-Aug-16
Maximum Load till date:	
344.02 MW	18-Mar-17



འབྲུག་རྒྱལ་ཁོ་ལས་འཛིན།

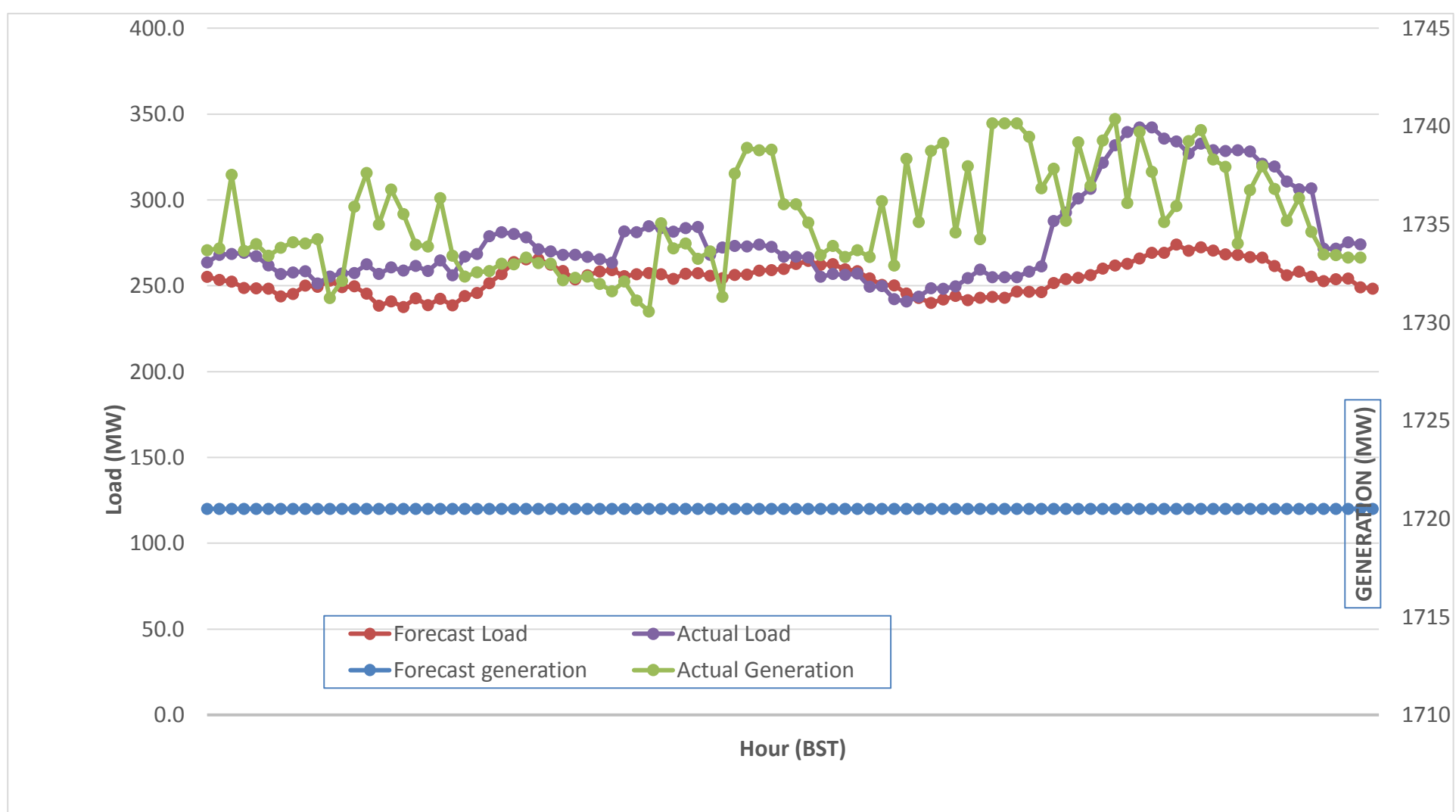
Bhutan Power Corporation Ltd.
 Bhutan Power System Operator
 Thimphu: Bhutan



Message No.: Enter your message number
 From: Shift In-charge, Control Room

Date: 16-Aug-17
 Time: 10:34

Forecast Generation & Load with Actual Generation & Load (15-Aug-2017).



Yours faithfully,

Sign:

Tshering Choden

	MW
Peak Co-incident Generation(15-Aug-2017).	1740.38
Peak Co-incident Load(15-Aug-2017).	342.26

Coincidental peak load of Day(Last year):	
275.03 MW	15-Aug-16
Maximum Load till date:	
344.02 MW	18-Mar-17

Telephone: +975-02335631; Fax: +975-02335632; Email: bhutansystemoperator@bpc.bt; www.bpc.bt



འབྲུག་གྲོག་མེ་ལས་འཛིན།

Bhutan Power Corporation Ltd.
Bhutan Power System Operator
Thimphu: Bhutan



Message No.: Enter your message number
From: Shift In-charge, Control Room

Date: 16-Aug-17
Time: 10:34

To
Managing Director, BPC. Email: gemtshering@bpc.bt
Director, O&MD, DGPC. Email: director.omb@drukgreen.com
General Manager, TD, BPC. Email: thinleygyeltshen@bpc.bt
General Manager, DCSD, BPC. Email: sandeprai@bpc.bt
General Manager, BPSO, BPC. Email: ujjwaldahal@bpc.bt

Sub: **Load Generation Balance Report of Today (16-Aug-2017).**

Hours (BST)	Forecast		Actual	
	Generation	Load	Generation	Load
0:00	1728.9	247.4	1732.8	271.64
0:15	1728.9	247.1	1732.7	272.38
0:30	1728.9	243.9	1732.7	274.00
0:45	1728.9	239.2	1734.2	251.79
1:00	1728.9	243.3	1733.6	253.21
1:15	1728.9	244.6	1737.3	246.65
1:30	1728.9	242.2	1736.6	247.27
1:45	1728.9	242.4	1737.3	246.10
2:00	1728.9	245.5	1733.8	244.36
2:15	1728.9	246.2	1738.2	247.28
2:30	1728.9	246.7	1738.2	242.55
2:45	1728.9	242.7	1737.9	241.99
3:00	1728.9	244.7	1738.0	244.37
3:15	1728.9	241.6	1735.2	248.73
3:30	1728.9	236.5	1737.2	249.82
3:45	1728.9	238.4	1737.5	245.97
4:00	1728.9	236.3	1736.4	245.43
4:15	1728.9	240.4	1738.7	248.31
4:30	1728.9	238.1	1734.2	251.99
4:45	1728.9	238.1	1738.5	255.23
5:00	1728.9	238.4	1735.3	257.44
5:15	1728.9	243.6	1735.7	260.41
5:30	1728.9	243.2	1730.8	262.99
5:45	1728.9	248.7	1734.2	263.75
6:00	1728.9	258.5	1735.2	267.29
6:15	1728.9	265.9	1733.1	276.55
6:30	1728.9	268.7	1735.0	300.14
6:45	1728.9	268.3	1735.1	302.36
7:00	1728.9	265.4	1735.0	303.90
7:15	1728.9	260.5	1735.8	295.87
7:30	1728.9	255.8	1737.5	284.91
7:45	1728.9	255.3	1735.2	265.23
8:00	1728.9	256.5	1732.8	271.48
8:15	1728.9	257.1	1734.4	265.22
8:30	1728.9	254.4	1735.3	258.80
8:45	1728.9	249.5	1733.9	262.45
9:00	1728.9	250.7	1733.0	263.48

Coincidental peak load of Day(Last year):	
278.91MW	16-Aug-17
258.23 MW	
344.02 MW	18-Mar-17

Yours faithfully,

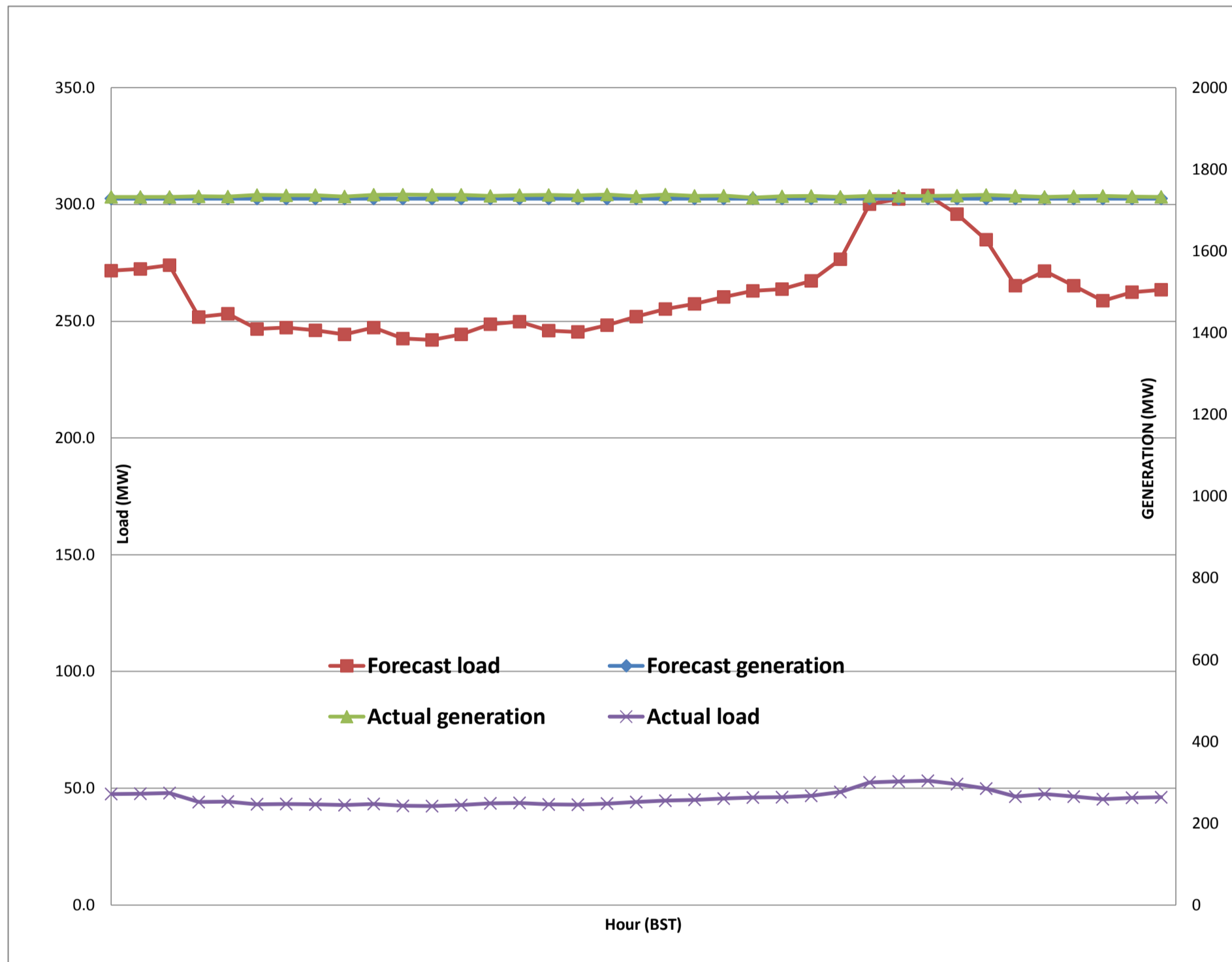
Sign:
Tshering Choden



Message No.: Enter your message number
 From: Shift In-charge, Control Room

Date: 16-Aug-17
 Time: 10:34

Forecast Generation & Load with Actual Generation & Load of Today from 00:00hrs to 09:00hrs(16-Aug-2017).





འབྲུག་གྲོག་ལས་ཁུངས་ལཱ་རིཊ།
Bhutan Power Corporation Ltd.
Bhutan Power System Operator
 Thimphu: Bhutan



Message No.: Enter your message number
From: Shift In-charge, Control Room
Date: 16-Aug-17
Time: 10:34
To: Managing Director, BPC. Email: gemtshering@bpc.bt
 Director, O&MD, DGPC. Email: director.umd@drukgreen.com
 General Manager, TD, BPC. Email: ktobgye@bpc.bt
 General Manager, BPSO, BPC. Email: ujjwaldahal@bpc.bt
 Advisor, BPC. Email: bharattamang@bpc.bt
Sub: Load Generation Balance Report of Tomorrow (17-Aug-2017).

 ###

Hours (BST)	Forecast		Hours (BST)	Forecast	
	Generation	Load		Generation	Load
0:00	1727.3	251.80	12:00	1695.3	265.4
0:15	1727.3	251.80	12:15	1695.3	266.7
0:30	1727.3	250.10	12:30	1695.3	265.3
0:45	1727.3	246.50	12:45	1695.3	262.7
1:00	1727.3	248.80	13:00	1695.3	258.2
1:15	1727.3	249.30	13:15	1695.3	258.4
1:30	1727.3	246.00	13:30	1695.3	256.5
1:45	1727.3	246.80	13:45	1695.3	251.2
2:00	1727.3	249.50	14:00	1695.3	250.9
2:15	1727.3	247.60	14:15	1695.3	246.7
2:30	1727.3	249.90	14:30	1695.3	243.9
2:45	1727.3	247.10	14:45	1695.3	244.6
3:00	1727.3	248.80	15:00	1695.3	246.6
3:15	1727.3	246.90	15:15	1695.3	246.9
3:30	1727.3	241.70	15:30	1695.3	248
3:45	1727.3	244.20	15:45	1695.3	246.6
4:00	1727.3	242.10	16:00	1695.3	246.1
4:15	1727.3	246.00	16:15	1695.3	245
4:30	1727.3	243.70	16:30	1695.3	247.3
4:45	1727.3	243.70	16:45	1695.3	247.7
5:00	1727.3	244.10	17:00	1695.3	247.4
5:15	1727.3	249.60	17:15	1695.3	251.7
5:30	1727.3	249.80	17:30	1695.3	262.3
6:45	1727.3	256.60	17:45	1695.3	262.3
6:00	1727.3	264.60	18:00	1695.3	265.2
6:15	1727.3	270.10	18:15	1727.3	269.2
6:30	1727.3	271.00	18:30	1727.3	276.4
6:45	1727.3	269.80	18:45	1727.3	279.8
7:00	1727.3	267.20	19:00	1727.3	282.4
7:15	1727.3	262.80	19:15	1727.3	285.8
7:30	1727.3	259.30	19:30	1663.3	286.2
7:45	1727.3	258.30	19:45	1663.3	288.7
8:00	1727.3	259.10	20:00	1663.3	286.4
8:15	1695.3	259.00	20:15	1663.3	285.9
8:30	1695.3	260.70	20:30	1663.3	285.7
8:45	1695.3	258.50	20:45	1663.3	283.9
9:00	1695.3	258.10	21:00	1663.3	282.7
9:15	1695.3	261.80	21:15	1663.3	283.1
9:30	1695.3	261.00	21:30	1663.3	281.7
9:45	1695.3	263.50	21:45	1663.3	276.1
10:00	1695.3	262.50	22:00	1663.3	281.9
10:15	1695.3	259.30	22:15	1663.3	280.1
10:30	1695.3	259.30	22:30	1663.3	271.6
10:45	1695.3	260.40	22:45	1663.3	268.7
11:00	1695.3	261.80	23:00	1663.3	260.7
11:15	1695.3	264.00	23:15	1663.3	262.4
11:30	1695.3	264.10	23:30	1663.3	258.8
11:45	1695.3	263.30	23:45	1663.3	258.4

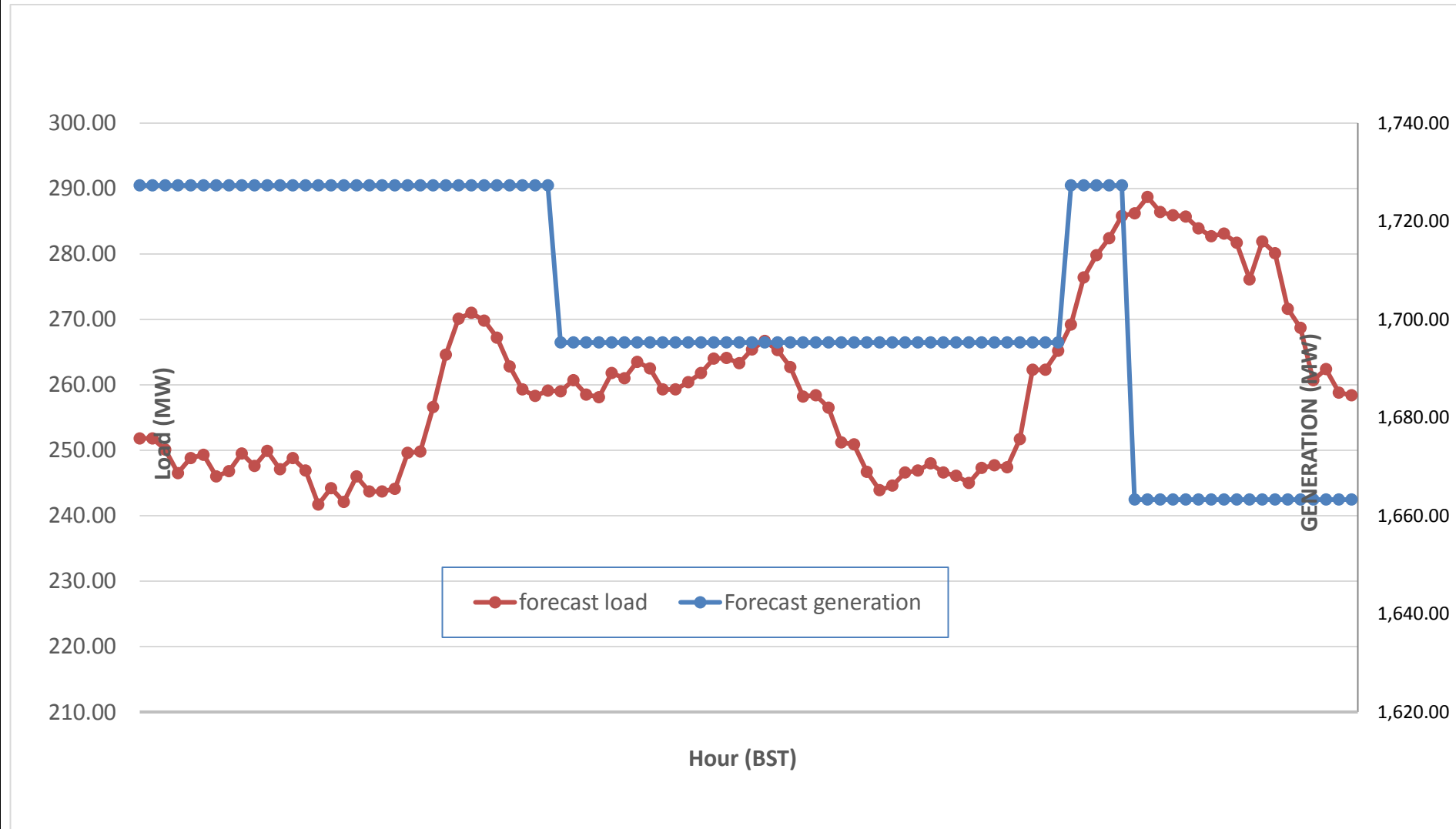
Yours faithfully,
 Sign:
 Tshering Choden



Message No.: Enter your message number
 From: Shift In-charge, Control Room

Date: 16-Aug-17
 Time: 10:34

Scheduled Generation & Load Forecast for Tomorrow (17-Aug-2017).



Yours faithfully,

Sign:
Tshering Choden

	MW
Scheduled Peak Generation(17-Aug-2017).	376.90
Forecast Peak Load(17-Aug-2017).	300.60