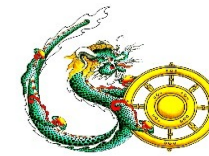




འབྲུག་གྲོག་མེ་ལས་འཛིན།

Bhutan Power Corporation Ltd.
 Bhutan Power System Operator
 Thimphu: Bhutan



Message No.: Enter your message number
 From: Shift In-charge, Control Room

Date: 14-Aug-17
 Time: 11:08

To: Forecast Generation & Load with Actual Generation & Load (13-Aug-2017).
 Managing Director, BPC. Email: gemtshering@bpc.bt
 Director, O&MD, DGPC. Email: director.omid@drukgreen.com
 General Manager, TD, BPC. Email: ktobgye@bpc.bt
 General Manager, DCSD, BPC. Email: sandeeprai@bpc.bt
 General Manager, BPSO, BPC. Email: ujjwaldahal@bpc.bt

Sub: Load Generation Balance Report of Yesterday (13-Aug-2017).

Hours (BST)	Forecast		Actual		Hours (BST)	Forecast		Actual	
	Generation	Load	Generation	Load		Generation	Load	Generation	Load
0:00	1743.5	256.5	1733.4	249.2	12:00	1743.5	258.4	1732.4	271.59
0:15	1743.5	254.9	1728.9	247.3	12:15	1743.5	259.7	1736.8	264.55
0:30	1743.5	254.9	1732.8	247.2	12:30	1743.5	256.6	1733.7	265.80
0:45	1743.5	254.5	1734.2	238.5	12:45	1743.5	259.9	1736.6	265.37
1:00	1743.5	254.2	1730.6	237.2	13:00	1743.5	255.1	1735.6	262.88
1:15	1743.5	254.1	1732.8	230.6	13:15	1743.5	254.1	1732.1	262.31
1:30	1743.5	252.3	1733.6	232.4	13:30	1743.5	251.8	1734.5	251.23
1:45	1743.5	252.9	1733.3	235.1	13:45	1743.5	249.2	1733.4	250.91
2:00	1743.5	252.2	1731.7	236.7	14:00	1743.5	248.4	1733.2	248.93
2:15	1743.5	251.7	1732.5	240.0	14:15	1743.5	245	1733.4	249.70
2:30	1743.5	253.1	1729.8	240.9	14:30	1741.3	241.3	1733.3	249.05
2:45	1743.5	253.3	1735.2	234.0	14:45	1741.1	241.1	1733.1	250.39
3:00	1743.5	252.5	1734.2	236.5	15:00	1743.5	244.5	1733.4	249.96
3:15	1743.5	244	1732.9	245.6	15:15	1743.5	247.7	1733.1	247.37
3:30	1740.4	240.4	1729.0	225.2	15:30	1743.3	243.3	1733.6	248.68
3:45	1743.5	243.6	1729.0	229.1	15:45	1743.5	245.8	1735.1	251.51
4:00	1743.5	246	1730.5	224.4	16:00	1743.5	244.2	1739.5	254.25
4:15	1743.5	244.8	1729.7	233.3	16:15	1743.5	244.3	1735.3	249.55
4:30	1743.5	245.2	1737.1	231.0	16:30	1743.5	249.4	1734.9	257.88
4:45	1743.5	245.5	1731.5	231.9	16:45	1743.5	249.4	1738.9	253.55
5:00	1743.5	244.8	1733.0	234.8	17:00	1743.5	248.8	1738.3	249.64
5:15	1743.5	248.8	1730.9	241.7	17:15	1743.5	253.6	1734.4	264.00
5:30	1743.5	253.2	1733.3	243.8	17:30	1743.5	256.4	1735.3	267.54
6:45	1743.5	260.1	1731.8	241.2	17:45	1743.5	256.9	1731.3	269.86
6:00	1743.5	264.4	1730.8	247.8	18:00	1743.5	256.8	1732.4	270.37
6:15	1743.5	272.3	1734.6	254.9	18:15	1743.5	262.1	1734.6	278.32
6:30	1743.5	275.7	1730.1	260.8	18:30	1743.5	262.1	1734.2	286.22
6:45	1743.5	272.4	1730.0	261.9	18:45	1743.5	264.6	1731.9	287.53
7:00	1743.5	268.1	1732.0	258.4	19:00	1743.5	266.9	1734.7	294.34
7:15	1743.5	265.2	1731.9	266.0	19:15	1743.5	271.3	1732.5	306.09
7:30	1743.5	259.8	1730.1	268.5	19:30	1743.5	269.9	1733.1	302.05
7:45	1743.5	260.4	1733.5	265.6	19:45	1743.5	274.7	1733.0	300.80
8:00	1743.5	256.6	1731.6	267.5	20:00	1743.5	271	1733.1	300.12
8:15	1743.5	260.6	1727.0	267.1	20:15	1743.5	271.5	1733.5	306.81
8:30	1743.5	256.4	1728.8	267.0	20:30	1743.5	271.4	1733.1	301.74
8:45	1743.5	257.6	1730.8	262.4	20:45	1743.5	268.2	1733.1	299.82
9:00	1743.5	259.2	1734.1	267.3	21:00	1743.5	266.8	1733.2	299.96
9:15	1743.5	258.8	1729.3	265.9	21:15	1743.5	263.6	1733.3	298.74
9:30	1743.5	256.6	1733.7	253.9	21:30	1743.5	262.2	1733.0	300.56
9:45	1743.5	259.1	1733.3	266.2	21:45	1743.5	262.3	1732.9	300.15
10:00	1743.5	258.5	1737.1	269.2	22:00	1743.5	263.4	1734.1	264.23
10:15	1743.5	257.9	1733.5	257.9	22:15	1743.5	259	1734.9	261.73
10:30	1743.5	254.5	1731.9	264.9	22:30	1743.5	258.2	1732.3	256.16
10:45	1743.5	257.2	1733.3	262.4	22:45	1743.5	257.6	1732.3	243.74
11:00	1743.5	258	1734.1	264.9	23:00	1743.5	256.4	1730.7	242.70
11:15	1743.5	255.9	1735.3	270.6	23:15	1743.5	257.6	1733.6	247.43
11:30	1743.5	256.9	1733.3	263.9	23:30	1743.5	257.7	1731.5	219.18
11:45	1743.5	255.8	1736.8	270.9	23:45	1743.5	257.2	1735.8	216.72

Yours faithfully,

Sign:
 Tshering Deki

Coincidental peak load of Day(Last year):	
255.84	13-Aug-16
Maximum Load till date:	
344.02 MW	18-Mar-17



འབྲུག་རྒྱུག་མེ་ལས་འཛིན།

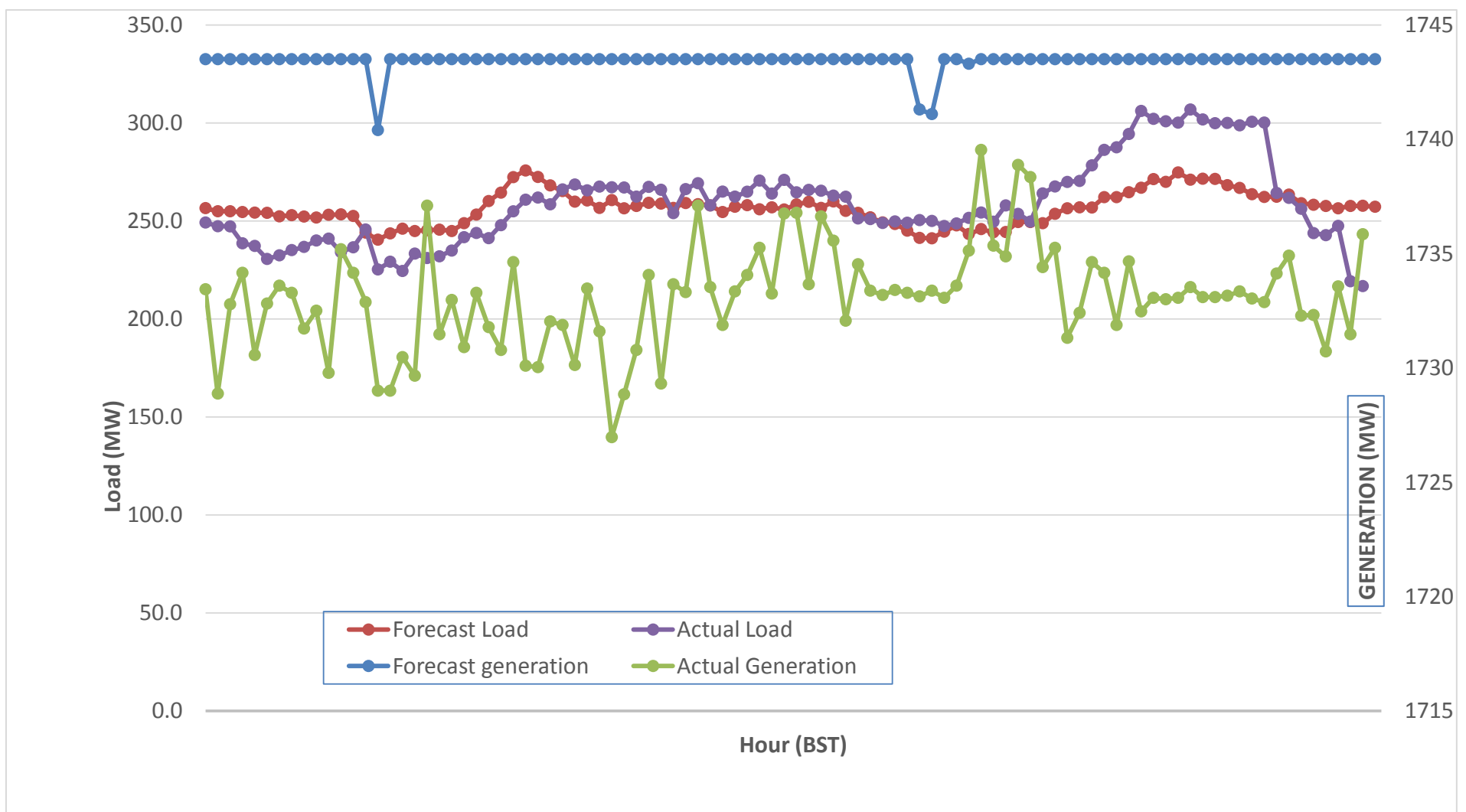
Bhutan Power Corporation Ltd.
 Bhutan Power System Operator
 Thimphu: Bhutan



Message No.: Enter your message number
 From: Shift In-charge, Control Room

Date: 14-Aug-17
 Time: 11:20

Forecast Generation & Load with Actual Generation & Load (13-Aug-2017).



Yours faithfully,

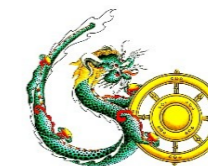
Sign:
Tshering Deki

	MW	Coincidental peak load of Day(Last year):	
Peak Co-incidental Generation(13-Aug-2017).	1739.53	255.84	13-Aug-16
Peak Co-incidental Load(13-Aug-2017).	306.81	Maximum Load till date:	
		344.02 MW	18-Mar-17

Telephone: +975-02335631; Fax: +975-02335632; Email: bhutansystemoperator@bpc.bt; www.bpc.bt



ལྷན་ རྒྱལ་གྱི་ལེ་ལས་འཛིན།
Bhutan Power Corporation Ltd.
Bhutan Power System Operator
Thimphu: Bhutan



Message No.: Enter your message number
From: Shift In-charge, Control Room

Date: 14-Aug-17
Time: 11:08

To Forecast Generation & Load with Actual Generation & Load (13-Aug-2017).
 Managing Director, BPC. Email: gemtshering@bpc.bt
 Director, O&MD, DGPC. Email: director.omb@drukgreen.com
 General Manager, TD, BPC. Email: thinleygyeltshen@bpc.bt
 General Manager, DCSD, BPC. Email: sandeprai@bpc.bt
 General Manager, BPSO, BPC. Email: ujjwaldahal@bpc.bt

Sub: Load Generation Balance Report from 00:00hrs to 09:00hrs (14-Aug-2017).

Hours (BST)	Forecast		Actual	
	Generation	Load	Generation	Load
0:00	1727.1	258.6	1732.6	221.70
0:15	1727.1	257	1733.2	183.89
0:30	1727.1	257.4	1668.7	217.43
0:45	1727.1	253.9	1636.7	219.76
1:00	1727.1	253.4	1646.7	226.44
1:15	1727.1	253.1	1663.8	233.80
1:30	1727.1	248.7	1685.5	237.30
1:45	1727.1	249.8	1695.1	234.35
2:00	1727.1	252.4	1716.3	232.74
2:15	1727.1	253.1	1730.3	237.36
2:30	1727.1	254.5	1731.8	233.64
2:45	1727.1	254.8	1732.1	232.23
3:00	1727.1	253.9	1736.4	234.18
3:15	1727.1	246.4	1732.0	233.20
3:30	1727.1	243.9	1736.6	237.70
3:45	1727.1	246.1	1738.2	232.00
4:00	1727.1	242.2	1736.7	232.56
4:15	1727.1	242.9	1737.0	235.70
4:30	1727.1	240.8	1737.0	241.71
4:45	1727.1	244.4	1735.8	225.89
5:00	1727.1	240.4	1732.9	236.50
5:15	1727.1	245.6	1737.7	243.29
5:30	1727.1	248.3	1735.8	238.24
5:45	1727.1	255.2	1738.5	241.15
6:00	1727.1	260.5	1735.9	264.35
6:15	1727.1	267	1735.2	270.55
6:30	1727.1	268.4	1735.7	277.51
6:45	1727.1	267.1	1736.1	275.49
7:00	1727.1	263.1	1738.2	278.42
7:15	1727.1	257.1	1738.9	267.98
7:30	1727.1	251.5	1740.9	266.47
7:45	1727.1	253.4	1733.7	254.95
8:00	1727.1	255.5	1734.0	250.82
8:15	1727.1	255.7	1735.5	251.75
8:30	1727.1	252.4	1736.2	249.08
8:45	1727.1	254.6	1668.6	246.88
9:00	1727.1	254.9	1669.2	231.22

Coincidental peak load of Day(Last year):	
255.84	13-Aug-16
258.23 MW	
344.02 MW	18-Mar-17

Yours faithfully,

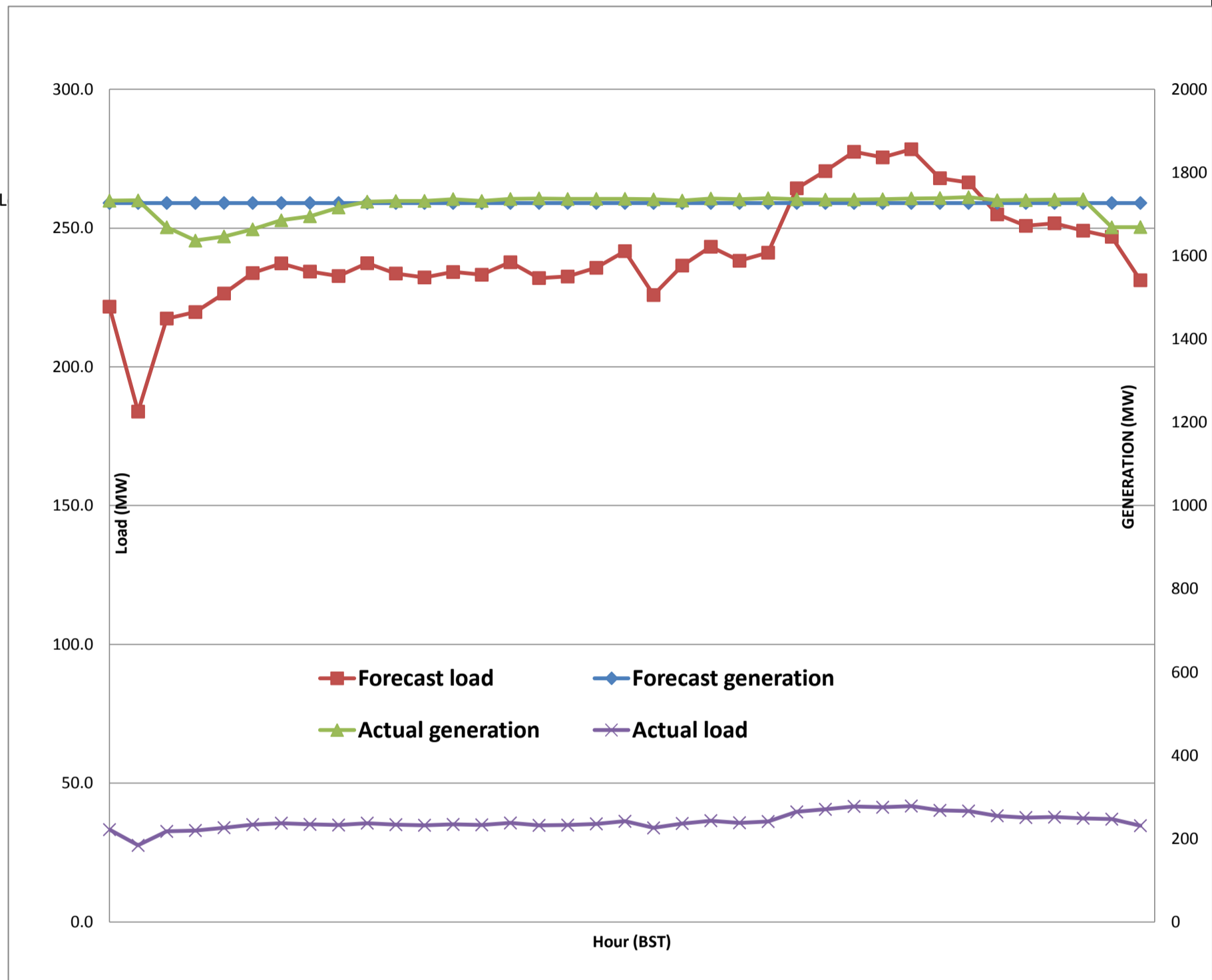
Sign:
 Tshering Deki



Message No.: Enter your message number
 From: Shift In-charge, Control Room

 ##### 11:08

Forecast Generation & Load with Actual Generation & Load of Today from 00:00hrs to 09:00hrs(14-Aug-2017).





འབྲུག་གྲོགས་ཚེལ་སྐུ་ལོ་སྐྱོད་ལྷན་ཁག་།
Bhutan Power Corporation Ltd.
Bhutan Power System Operator
 Thimphu: Bhutan



Message No.: Enter your message number **Date:** 14-Aug-17
From: Shift In-charge, Control Room **Time:** 11:08

To: Forecast Generation & Load with Actual Generation & Load (13-Aug-2017).
 Managing Director, BPC. Email: gemtshering@bpc.bt
 Director, O&MD, DGPC. Email: director.umd@drukgreen.com
 General Manager, TD, BPC. Email: ktobgye@bpc.bt
 General Manager, BPSO, BPC. Email: ujjwaldahal@bpc.bt
 Advisor, BPC. Email: bharattamang@bpc.bt

Sub: Scheduled Generation and Forcast Load of Tomorrow (15-Aug-2017).

Kindly find scheduled generation (MW) and load forecast (MW)

Hours (BST)	Forecast		Hours (BST)	Forecast	
	Generation	Load		Generation	Load
0:00	1720.5	255.20	12:00	1720.5	262.7
0:15	1720.5	253.40	12:15	1720.5	264.5
0:30	1720.5	252.40	12:30	1720.5	262.2
0:45	1720.5	248.70	12:45	1720.5	262.6
1:00	1720.5	248.50	13:00	1720.5	259.6
1:15	1720.5	248.30	13:15	1720.5	258.5
1:30	1720.5	243.80	13:30	1720.5	254.3
1:45	1720.5	245.20	13:45	1720.5	250.5
2:00	1720.5	250.10	14:00	1720.5	250.2
2:15	1720.5	249.40	14:15	1720.5	245.5
2:30	1720.5	253.00	14:30	1720.5	242.9
2:45	1720.5	249.20	14:45	1720.5	240
3:00	1720.5	249.70	15:00	1720.5	242
3:15	1720.5	245.40	15:15	1720.5	244.1
3:30	1720.5	238.40	15:30	1720.5	241.6
3:45	1720.5	240.90	15:45	1720.5	243
4:00	1720.5	237.60	16:00	1720.5	243.5
4:15	1720.5	242.70	16:15	1720.5	243
4:30	1720.5	238.70	16:30	1720.5	246.6
4:45	1720.5	242.40	16:45	1720.5	246.5
5:00	1720.5	238.60	17:00	1720.5	246.3
5:15	1720.5	244.00	17:15	1720.5	251.6
5:30	1720.5	245.80	17:30	1720.5	253.9
6:45	1720.5	251.50	17:45	1720.5	254.6
6:00	1720.5	256.80	18:00	1720.5	256.2
6:15	1720.5	263.80	18:15	1720.5	260
6:30	1720.5	265.40	18:30	1720.5	261.8
6:45	1720.5	265.50	18:45	1720.5	262.8
7:00	1720.5	262.30	19:00	1720.5	265.9
7:15	1720.5	258.60	19:15	1720.5	269.2
7:30	1720.5	253.70	19:30	1720.5	269.2
7:45	1720.5	256.10	19:45	1720.5	274
8:00	1720.5	258.30	20:00	1720.5	270.4
8:15	1720.5	259.10	20:15	1720.5	272.4
8:30	1720.5	255.60	20:30	1720.5	270.5
8:45	1720.5	256.70	20:45	1720.5	268.3
9:00	1720.5	257.40	21:00	1720.5	268
9:15	1720.5	256.70	21:15	1720.5	266.7
9:30	1720.5	254.00	21:30	1720.5	266.4
9:45	1720.5	257.00	21:45	1720.5	261.5
10:00	1720.5	257.30	22:00	1720.5	256.1
10:15	1720.5	255.80	22:15	1720.5	258.2
10:30	1720.5	254.40	22:30	1720.5	255.3
10:45	1720.5	256.30	22:45	1720.5	252.7
11:00	1720.5	256.50	23:00	1720.5	253.8
11:15	1720.5	258.80	23:15	1720.5	254.2
11:30	1720.5	259.10	23:30	1720.5	249.1
11:45	1720.5	259.80	23:45	1720.5	248.3

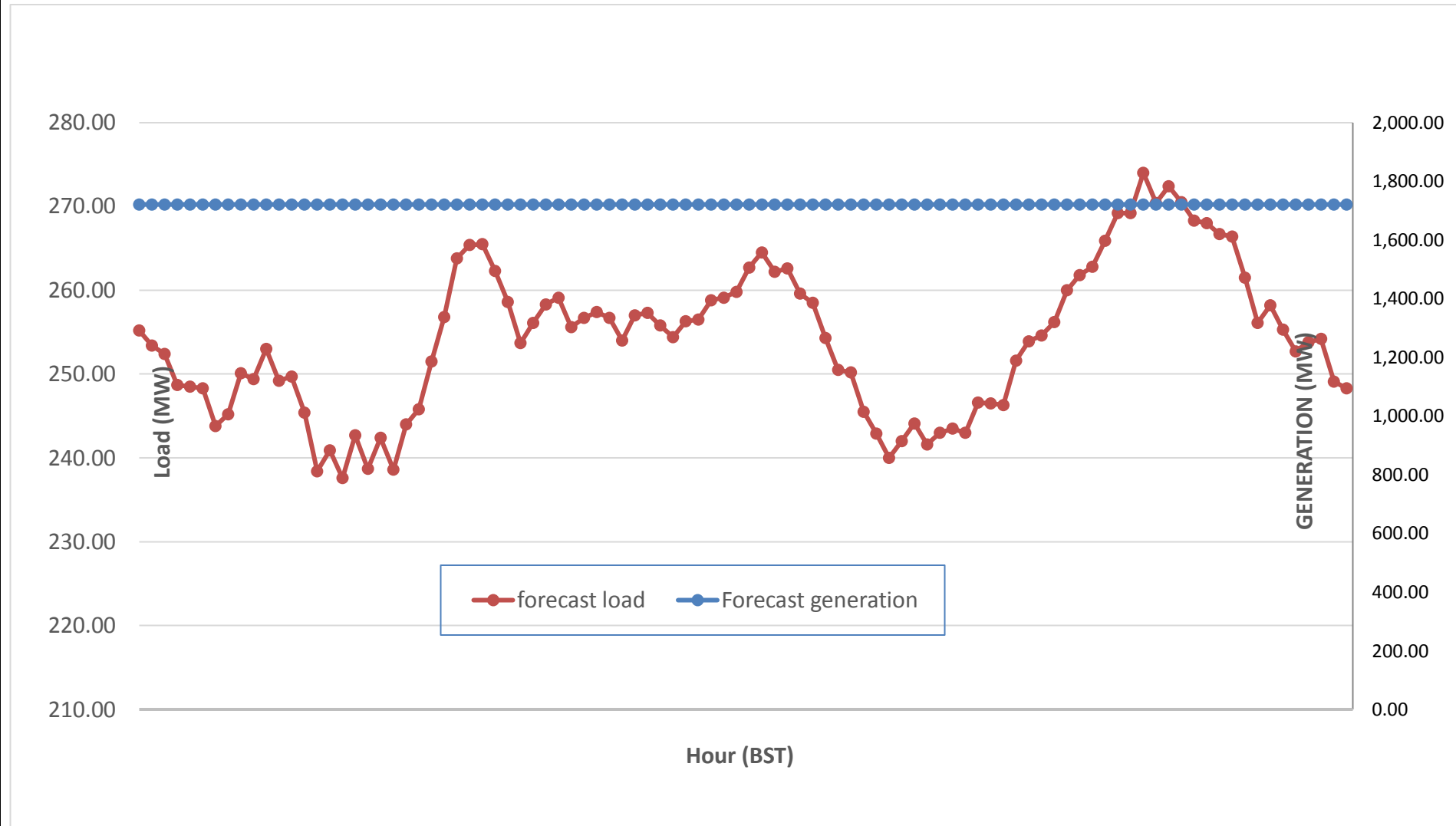
Yours faithfully,
 Sign:
 Tshering Deki



Message No.: Enter your message number
 From: Shift In-charge, Control Room

Date: 14-Aug-17
 Time: 11:20

Scheduled Generation & Load Forecast for Tomorrow (15-Aug-2017).



Yours faithfully,

Sign:
Tshering Deki

	MW
Scheduled Peak Generation(15-Aug-2017).	1,720.50
Forecast Peak Load(15-Aug-2017).	274.00