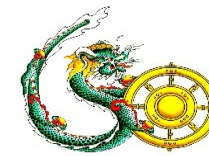




འབྲུག་གློག་མེ་ལས་འཛིན།

Bhutan Power Corporation Ltd.
Bhutan Power System Operator
Thimphu: Bhutan



Message No.: Enter your message number
From: Shift In-charge, Control Room

Date: 13-Aug-17
Time: 10:40

To: Forecast Generation & Load with Actual Generation & Load (12-Aug-2017).
Managing Director, BPC. Email: gemtshering@bpc.bt
Director, O&MD, DGPC. Email: director.omid@drukgreen.com
General Manager, TD, BPC. Email: ktobgye@bpc.bt
General Manager, DCSD, BPC. Email: sandeeprai@bpc.bt
General Manager, BPSO, BPC. Email: ujjwaldahal@bpc.bt

Sub: Load Generation Balance Report of Yesterday (12-Aug-2017).

Hours (BST)	Forecast		Actual		Hours (BST)	Forecast		Actual	
	Generation	Load	Generation	Load		Generation	Load	Generation	Load
0:00	1743.5	242.2	1736.2	254.6	12:00	1743.5	258.7	1605.6	252.52
0:15	1743.5	240.9	1733.8	255.0	12:15	1743.5	257.1	1605.9	256.62
0:30	1743.5	237.8	1736.8	258.6	12:30	1743.5	256.3	1605.7	257.27
0:45	1743.5	238.5	1738.3	240.5	12:45	1743.5	256.3	1605.9	256.04
1:00	1743.5	238.5	1733.0	238.9	13:00	1743.5	254.2	1606.0	256.50
1:15	1743.5	237.6	1730.0	241.3	13:15	1743.5	251.9	1606.1	255.58
1:30	1743.5	235.6	1734.2	220.7	13:30	1743.5	248.9	1605.8	253.06
1:45	1743.5	234.2	1732.8	226.8	13:45	1743.5	247.4	1606.0	252.74
2:00	1743.5	234.9	1735.5	239.8	14:00	1743.5	245.1	1605.8	254.13
2:15	1743.5	233.2	1735.9	248.8	14:15	1743.5	240.2	1357.1	226.64
2:30	1743.5	235.2	1737.7	248.4	14:30	1743.5	238	1357.7	225.82
2:45	1743.5	235.4	1737.4	248.0	14:45	1743.5	235.8	1357.9	222.89
3:00	1743.5	235.4	1737.6	248.5	15:00	1743.5	240	1357.9	220.72
3:15	1743.5	237.2	1737.6	249.2	15:15	1743.5	236	1358.5	230.60
3:30	1743.5	235.5	1736.5	248.3	15:30	1743.5	236.9	1358.5	232.80
3:45	1743.5	237.9	1738.0	245.8	15:45	1743.5	241.2	1358.2	229.59
4:00	1743.5	239.5	1692.3	217.5	16:00	1743.5	241.5	1358.2	229.59
4:15	1743.5	237.7	1700.3	222.0	16:15	1743.5	236.2	1358.2	229.59
4:30	1743.5	240.3	1667.6	203.4	16:30	1743.5	242.4	1358.2	229.59
4:45	1743.5	238.9	1647.2	194.5	16:45	1743.5	243.2	1358.2	229.59
5:00	1743.5	239.5	1658.9	206.1	17:00	1743.5	242.7	1358.2	229.59
5:15	1743.5	246.4	1661.8	209.6	17:15	1743.5	243.2	1358.2	229.59
5:30	1743.5	250.5	1667.7	213.4	17:30	1743.5	247.3	1358.2	229.59
6:45	1743.5	260.1	1657.6	207.8	17:45	1743.5	248	1358.2	229.59
6:00	1743.5	264.4	1648.3	202.6	18:00	1743.5	247.3	1358.2	229.59
6:15	1743.5	271.2	1648.3	202.6	18:15	1743.5	253.9	1358.2	229.59
6:30	1743.5	270.7	1648.3	202.6	18:30	1743.5	254.3	1358.2	229.59
6:45	1743.5	272.1	1648.3	202.6	18:45	1743.5	254.6	1358.2	229.59
7:00	1743.5	270	1648.3	202.6	19:00	1743.5	256.2	1358.2	229.59
7:15	1743.5	266.6	1685.0	194.1	19:15	1743.5	263.4	1358.2	229.59
7:30	1743.5	262.7	1644.1	172.0	19:30	1743.5	263.6	1358.2	229.59
7:45	1743.5	259.9	1677.0	205.7	19:45	1743.5	279.5	1358.2	229.59
8:00	1743.5	257.6	1468.5	235.1	20:00	1743.5	273.1	1356.7	206.38
8:15	1743.5	257.3	1558.8	235.1	20:15	1743.5	276.4	1357.0	204.69
8:30	1743.5	256.1	1643.8	233.5	20:30	1743.5	274.3	1357.3	200.35
8:45	1743.5	254.3	1667.8	230.5	20:45	1743.5	269	1357.8	203.84
9:00	1743.5	256	1692.8	228.2	21:00	1743.5	268	1357.5	202.27
9:15	1743.5	256.1	1704.4	232.6	21:15	1743.5	264.5	1357.5	199.30
9:30	1743.5	258.1	1651.0	230.3	21:30	1743.5	262.5	1357.6	200.26
9:45	1743.5	258.1	1628.9	229.5	21:45	1743.5	258.6	1357.7	196.18
10:00	1743.5	257.2	1603.4	234.5	22:00	1743.5	258.4	1720.3	206.14
10:15	1743.5	258.3	1604.9	240.2	22:15	1743.5	254.2	1731.5	248.42
10:30	1743.5	258.7	1605.9	233.1	22:30	1743.5	251.7	1734.6	247.53
10:45	1743.5	256.4	1605.7	236.2	22:45	1743.5	250.4	1732.0	246.57
11:00	1743.5	257.1	1605.8	233.3	23:00	1743.5	248.8	1730.6	252.02
11:15	1743.5	259.2	1605.9	235.0	23:15	1743.5	248.3	1734.6	246.69
11:30	1743.5	259	1606.1	240.2	23:30	1743.5	247.9	1735.7	247.24
11:45	1743.5	257.8	1605.9	247.3	23:45	1743.5	247	1736.1	246.73

Yours faithfully,

Sign:
Tshering Deki

Coincidental peak load of Day(Last year):	
283.639	12-Aug-16
Maximum Load till date:	
344.02 MW	18-Mar-17



འབྲུག་གྲོག་མེ་ལས་འཛིན།

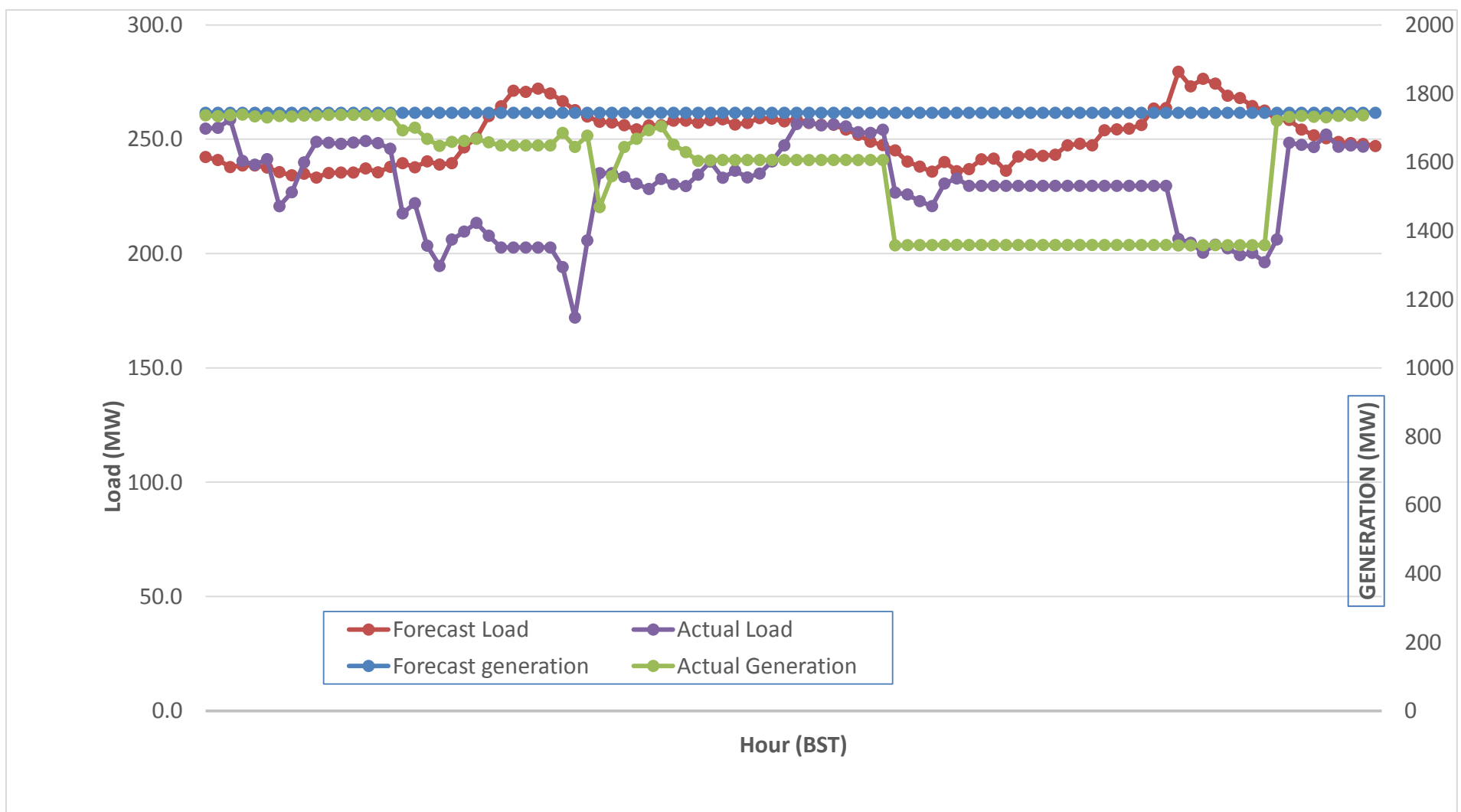
Bhutan Power Corporation Ltd.
 Bhutan Power System Operator
 Thimphu: Bhutan



Message No.: Enter your message number
 From: Shift In-charge, Control Room

Date: 13-Aug-17
 Time: 14:06

Forecast Generation & Load with Actual Generation & Load (12-Aug-2017).



Yours faithfully,

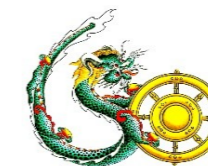
Sign:
Tshering Deki

	MW
Peak Co-incident Generation(12-Aug-2017).	1738.28
Peak Co-incident Load(12-Aug-2017).	258.57

Coincidental peak load of Day(Last year):	
283.639	12-Aug-16
Maximum Load till date:	
344.02 MW	18-Mar-17



འབྲུག་གྲོག་མེ་ལས་འཛིན།
Bhutan Power Corporation Ltd.
Bhutan Power System Operator
Thimphu: Bhutan



Message No.: Enter your message number
From: Shift In-charge, Control Room

Date: 13-Aug-17
Time: 10:40

To Forecast Generation & Load with Actual Generation & Load (12-Aug-2017).
 Managing Director, BPC. Email: gemtshering@bpc.bt
 Director, O&MD, DGPC. Email: director.umd@drukgreen.com
 General Manager, TD, BPC. Email: thinleygyeltshen@bpc.bt
 General Manager, DCSD, BPC. Email: sandeprai@bpc.bt
 General Manager, BPSO, BPC. Email: ujjwaldahal@bpc.bt

Sub: Load Generation Balance Report from 00:00hrs to 09:00hrs (13-Aug-2017).

Hours (BST)	Forecast		Actual	
	Generation	Load	Generation	Load
0:00	1743.5	256.5	1733.4	249.16
0:15	1743.5	254.9	1728.9	247.26
0:30	1743.5	254.9	1732.8	247.18
0:45	1743.5	254.5	1734.2	238.54
1:00	1743.5	254.2	1730.6	237.21
1:15	1743.5	254.1	1732.8	230.56
1:30	1743.5	252.3	1733.6	232.41
1:45	1743.5	252.9	1733.3	235.09
2:00	1743.5	252.2	1731.7	236.71
2:15	1743.5	251.7	1732.5	239.98
2:30	1743.5	253.1	1729.8	240.93
2:45	1743.5	253.3	1735.2	234.05
3:00	1743.5	252.5	1734.2	236.50
3:15	1743.5	244	1732.9	245.60
3:30	1740.4	240.4	1729.0	225.21
3:45	1743.5	243.6	1729.0	229.14
4:00	1743.5	246	1730.5	224.42
4:15	1743.5	244.8	1729.7	233.29
4:30	1743.5	245.2	1737.1	231.04
4:45	1743.5	245.5	1731.5	231.91
5:00	1743.5	244.8	1733.0	234.83
5:15	1743.5	248.8	1730.9	241.66
5:30	1743.5	253.2	1733.3	243.82
5:45	1743.5	260.1	1731.8	241.17
6:00	1743.5	264.4	1730.8	247.79
6:15	1743.5	272.3	1734.6	254.86
6:30	1743.5	275.7	1730.1	260.80
6:45	1743.5	272.4	1730.0	261.89
7:00	1743.5	268.1	1732.0	258.44
7:15	1743.5	265.2	1731.9	266.03
7:30	1743.5	259.8	1730.1	268.55
7:45	1743.5	260.4	1733.5	265.56
8:00	1743.5	256.6	1731.6	267.48
8:15	1743.5	260.6	1727.0	267.13
8:30	1743.5	256.4	1728.8	267.02
8:45	1743.5	257.6	1730.8	262.37
9:00	1743.5	259.2	1734.1	267.34

Coincidental peak load of Day(Last year):	
283.639	12-Aug-16
258.23 MW	
344.02 MW	18-Mar-17

Yours faithfully,

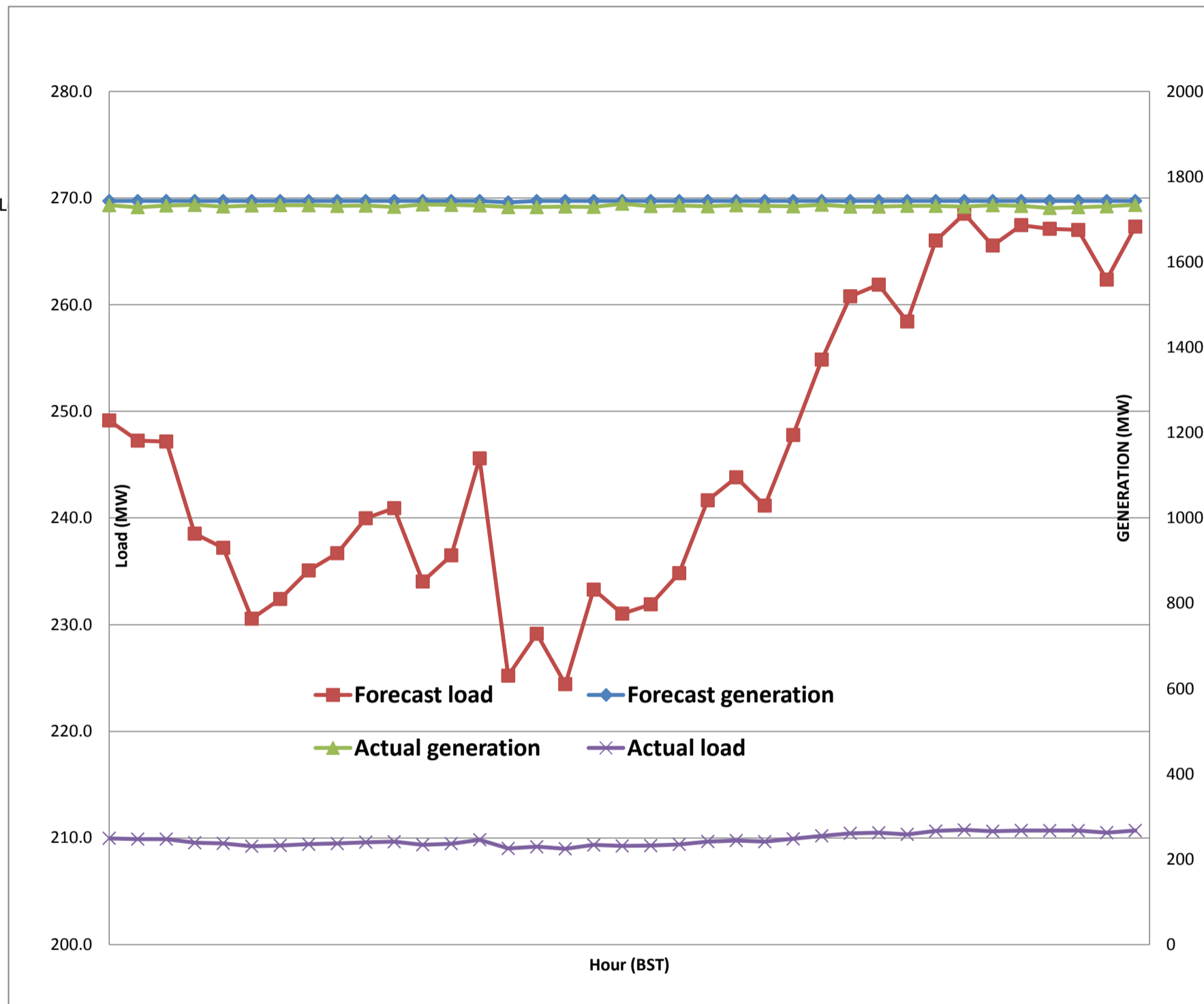
Sign:
 Tshering Deki



Message No.: Enter your message number
 From: Shift In-charge, Control Room

 ##### #

Forecast Generation & Load with Actual Generation & Load of Today from 00:00hrs to 09:00hrs(13-Aug-2017).





འབྲུག་གྲོག་ལས་ཁུངས་ལྷན་ཁག།
Bhutan Power Corporation Ltd.
Bhutan Power System Operator
 Thimphu: Bhutan



Message No.: Enter your message number **Date:** 13-Aug-17
From: Shift In-charge, Control Room **Time:** 10:40

To: Forecast Generation & Load with Actual Generation & Load (12-Aug-2017).
 Managing Director, BPC. Email: gemtshering@bpc.bt
 Director, O&MD, DGPC. Email: director.umd@drukgreen.com
 General Manager, TD, BPC. Email: ktobgye@bpc.bt
 General Manager, BPSO, BPC. Email: ujjwaldahal@bpc.bt
 Advisor, BPC. Email: bharattamang@bpc.bt

Sub: Scheduled Generation and Forcast Load of Tomorrow (14-Aug-2017).

Kindly find scheduled generation (MW) and load forecast (MW)

Hours (BST)	Forecast		Hours (BST)	Forecast	
	Generation	Load		Generation	Load
0:00	1727.1	258.60	12:00	1727.1	261.2
0:15	1727.1	257.00	12:15	1727.1	264.2
0:30	1727.1	257.40	12:30	1727.1	261
0:45	1727.1	253.90	12:45	1727.1	263.1
1:00	1727.1	253.40	13:00	1727.1	258.5
1:15	1727.1	253.10	13:15	1727.1	257.5
1:30	1727.1	248.70	13:30	1727.1	256.3
1:45	1727.1	249.80	13:45	1727.1	251.1
2:00	1727.1	252.40	14:00	1727.1	250.7
2:15	1727.1	253.10	14:15	1727.1	244.3
2:30	1727.1	254.50	14:30	1727.1	240.9
2:45	1727.1	254.80	14:45	1727.1	236.6
3:00	1727.1	253.90	15:00	1727.1	239.5
3:15	1727.1	246.40	15:15	1727.1	243.4
3:30	1727.1	243.90	15:30	1727.1	239.3
3:45	1727.1	246.10	15:45	1727.1	241.1
4:00	1727.1	242.20	16:00	1727.1	239.8
4:15	1727.1	242.90	16:15	1727.1	240
4:30	1727.1	240.80	16:30	1727.1	244.2
4:45	1727.1	244.40	16:45	1727.1	244.1
5:00	1727.1	240.40	17:00	1727.1	243.7
5:15	1727.1	245.60	17:15	1727.1	247.6
5:30	1727.1	248.30	17:30	1727.1	249
6:45	1727.1	255.20	17:45	1727.1	250
6:00	1727.1	260.50	18:00	1727.1	249.5
6:15	1727.1	267.00	18:15	1727.1	253.1
6:30	1727.1	268.40	18:30	1727.1	253
6:45	1727.1	267.10	18:45	1727.1	254.4
7:00	1727.1	263.10	19:00	1727.1	255.9
7:15	1727.1	257.10	19:15	1727.1	258.7
7:30	1727.1	251.50	19:30	1727.1	258.1
7:45	1727.1	253.40	19:45	1727.1	264.1
8:00	1727.1	255.50	20:00	1727.1	260.2
8:15	1727.1	255.70	20:15	1727.1	260.6
8:30	1727.1	252.40	20:30	1727.1	259.7
8:45	1727.1	254.60	20:45	1727.1	257.5
9:00	1727.1	254.90	21:00	1727.1	257.3
9:15	1727.1	254.50	21:15	1727.1	255.7
9:30	1727.1	253.00	21:30	1727.1	255
9:45	1727.1	254.30	21:45	1727.1	254.5
10:00	1727.1	255.20	22:00	1727.1	256
10:15	1727.1	254.50	22:15	1727.1	257.6
10:30	1727.1	251.70	22:30	1727.1	255.7
10:45	1727.1	255.80	22:45	1727.1	256.5
11:00	1727.1	255.20	23:00	1727.1	256.8
11:15	1727.1	255.20	23:15	1727.1	255.6
11:30	1727.1	256.30	23:30	1724	258.1
11:45	1727.1	257.90	23:45	1724	256.7

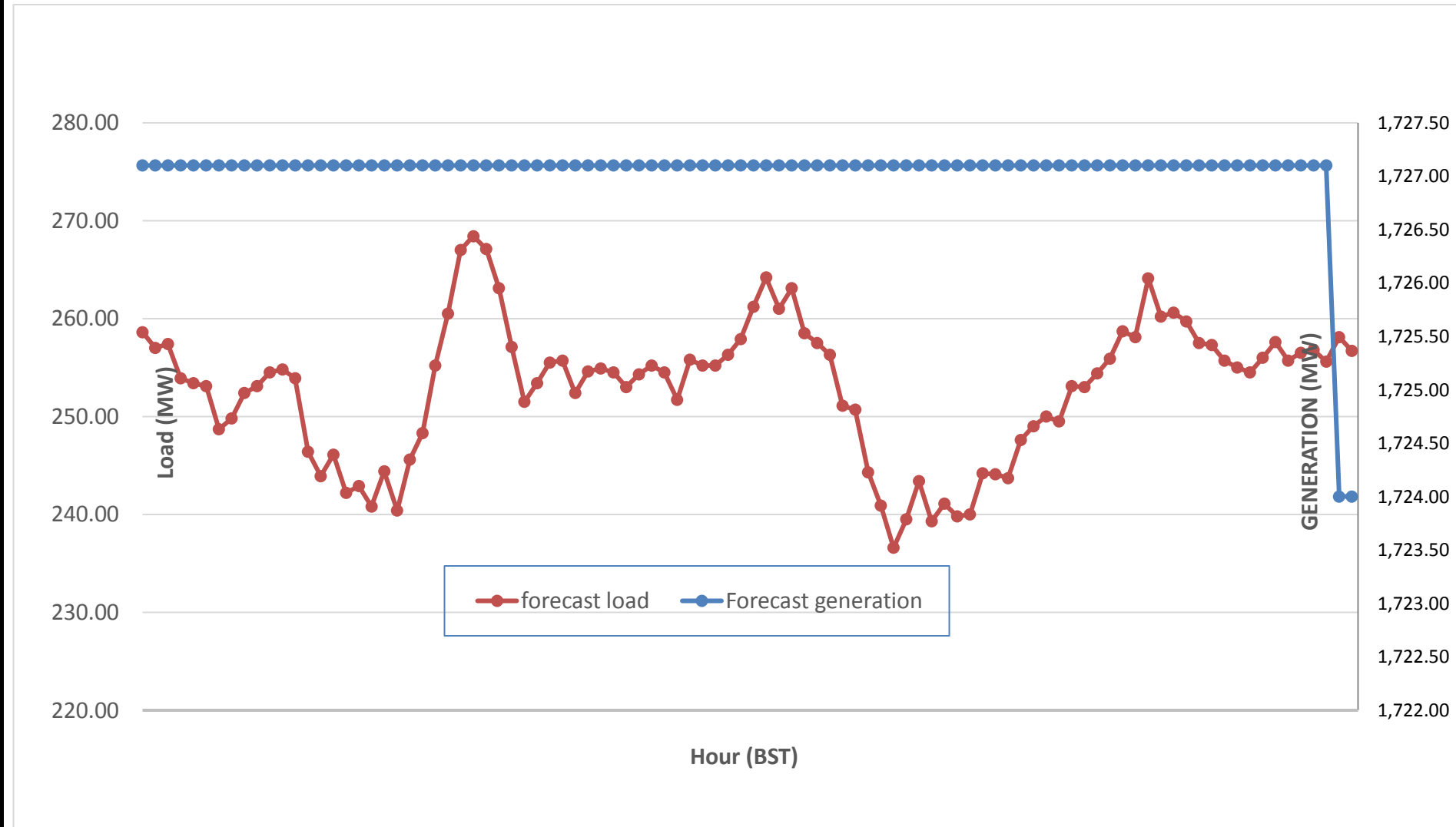
Yours faithfully,
 Sign:
 Tshering Deki



Message No.: Enter your message number
From: Shift In-charge, Control Room

Date: 13-Aug-17
Time: 14:06

Scheduled Generation & Load Forecast for Tomorrow (14-Aug-2017).



Yours faithfully,

Sign:
Tshering Deki

	MW
Scheduled Peak Generation(14-Aug-2017).	1,727.10
Forecast Peak Load(14-Aug-2017).	268.40