



འབྲུག་གླིང་གི་ལམ་འཛིན།

Bhutan Power Corporation Ltd.
Bhutan Power System Operator
Thimphu: Bhutan



Message No.: Enter your message number
From: Shift In-charge, Control Room

Date: 26-Jul-17
Time: 11:06

To: Forecast Generation & Load with Actual Generation & Load (25-Jul-2017).
Managing Director, BPC. Email: gemtshering@bpc.bt
Director, O&MD, DGPC. Email: director.omb@drukgreen.com
General Manager, TD, BPC. Email: ktobgye@bpc.bt
General Manager, DCSD, BPC. Email: sandeeprai@bpc.bt
General Manager, BPSO, BPC. Email: ujjwaldahal@bpc.bt

Sub: Load Generation Balance Report of Yesterday (25-Jul-2017).

Hours (BST)	Forecast		Actual		Hours (BST)	Forecast		Actual	
	Generation	Load	Generation	Load		Generation	Load	Generation	Load
0:00	1718.5	233.4	1716.8	237.97	12:00	1718.5	243.3	1726.0	265.80
0:15	1718.5	232.6	1720.0	241.73	12:15	1718.5	230	1729.3	265.56
0:30	1718.5	232.7	1715.3	241.53	12:30	1710	210	1718.0	257.56
0:45	1718.5	233.9	1697.0	241.70	12:45	1717.7	241.1	1723.0	248.05
1:00	1718.5	232.6	1698.1	242.06	13:00	1717.7	244.5	1724.1	253.55
1:15	1718.5	232.6	1694.6	240.65	13:15	1717.7	244.8	1725.0	249.26
1:30	1718.5	232.3	1692.4	237.34	13:30	1717.7	239.2	1722.2	242.55
1:45	1718.5	232	1689.8	235.16	13:45	1717.7	234.9	1726.3	244.05
2:00	1718.5	231.4	1688.3	235.66	14:00	1717.7	238.7	1722.2	254.07
2:15	1718.5	230.1	1696.2	242.04	14:15	1717.7	239.3	1727.1	252.80
2:30	1718.5	230.9	1695.1	235.07	14:30	1717.7	240.3	1724.9	253.98
2:45	1718.5	230.6	1721.9	236.36	14:45	1717.7	244.2	1728.4	250.35
3:00	1718.5	230.9	1723.1	233.14	15:00	1717.7	243	1727.1	248.02
3:15	1718.5	231.2	1717.8	234.91	15:15	1717.7	242.3	1728.2	252.39
3:30	1718.5	230.6	1720.3	232.18	15:30	1717.7	239.4	1726.0	254.64
3:45	1718.5	233.3	1721.0	233.40	15:45	1717.7	240.4	1731.9	256.69
4:00	1718.5	234.4	1721.5	240.80	16:00	1717.7	239.2	1734.6	248.46
4:15	1718.5	233.6	1717.5	242.12	16:15	1717.7	238.2	1735.3	260.17
4:30	1718.5	234.2	1722.2	240.86	16:30	1717.7	237.6	1732.6	263.86
4:45	1718.5	234.2	1718.6	239.68	16:45	1717.7	237.9	1731.6	252.39
5:00	1718.5	234.3	1719.3	244.89	17:00	1717.7	238.1	1737.2	263.55
5:15	1718.5	236.3	1719.8	244.91	17:15	1717.7	240.9	1739.1	263.64
5:30	1718.5	241.8	1721.3	246.64	17:30	1717.7	239.5	1735.5	266.63
6:45	1718.5	244.9	1722.8	251.52	17:45	1717.7	238.4	1705.4	271.64
6:00	1718.5	245.5	1724.2	254.51	18:00	1717.7	241	1693.5	271.61
6:15	1718.5	247.1	1731.2	253.24	18:15	1717.7	242	1697.2	277.27
6:30	1718.5	249.7	1733.9	258.16	18:30	1717.7	245.5	1711.6	269.77
6:45	1718.5	249.3	1734.2	269.27	18:45	1717.7	245.6	1731.0	278.52
7:00	1718.5	248.5	1729.2	271.28	19:00	1717.7	250.5	1734.3	279.14
7:15	1718.5	248.9	1731.8	274.64	19:15	1717.7	254.8	1734.8	290.21
7:30	1718.5	247.9	1731.8	270.70	19:30	1717.7	257.5	1732.0	301.73
7:45	1718.5	246.8	1729.1	240.94	19:45	1717.7	254.8	1735.3	299.58
8:00	1718.5	246.9	1731.8	250.71	20:00	1717.7	252.5	1733.7	297.69
8:15	1718.5	246.3	1732.3	270.23	20:15	1717.7	253.7	1735.9	294.38
8:30	1718.5	247.8	1736.5	270.91	20:30	1717.7	251.6	1732.5	289.88
8:45	1718.5	247.8	1730.3	272.71	20:45	1717.7	249.1	1733.4	294.72
9:00	1718.5	248.3	1729.4	273.27	21:00	1717.7	246.9	1736.9	289.18
9:15	1718.5	248.6	1726.4	274.82	21:15	1717.7	243.3	1731.5	280.70
9:30	1718.5	249.9	1732.8	274.45	21:30	1717.7	241.1	1733.6	280.04
9:45	1718.5	249.6	1726.1	271.15	21:45	1717.7	240.9	1737.7	273.07
10:00	1718.5	249.5	1729.7	273.39	22:00	1717.7	237.5	1735.5	270.82
10:15	1718.5	250.6	1729.1	267.15	22:15	1717.7	236.9	1735.4	268.61
10:30	1718.5	247.5	1728.5	263.31	22:30	1717.7	235	1734.7	264.26
10:45	1718.5	242	1725.3	260.12	22:45	1717.7	234.2	1735.9	268.83
11:00	1718.5	244.4	1728.3	265.02	23:00	1717.7	232	1734.5	265.39
11:15	1718.5	245.5	1721.2	260.29	23:15	1717.7	230.8	1730.4	266.07
11:30	1718.5	248.9	1725.8	265.74	23:30	1717.7	227.8	1736.9	258.21
11:45	1718.5	244.4	1725.2	262.89	23:45	1717.7	228.3	1732.9	254.37

Remarks-no forecast generation and load due to problem with RSC

Yours faithfully,

Sign:
Tshering Yangzom

Coincidental peak load of Day(Last year):	
276.27	26-Jul-16
Maximum Load till date:	
344.02 MW	18-Mar-17



འབྲུག་རྒྱལ་ཁོ་ལས་འཛིན།

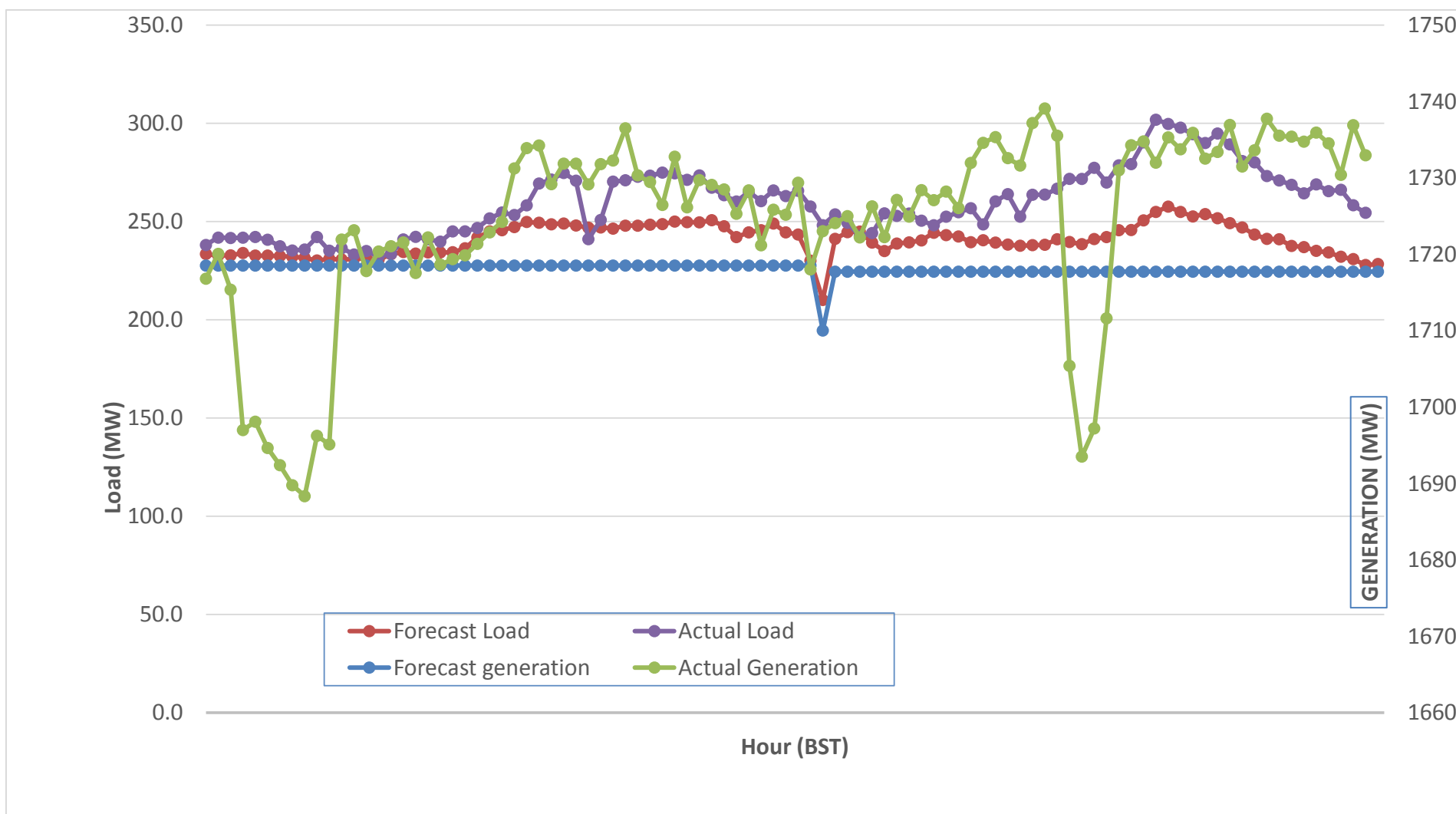
Bhutan Power Corporation Ltd.
 Bhutan Power System Operator
 Thimphu: Bhutan



Message No.: Enter your message number
 From: Shift In-charge, Control Room

Date: 26-Jul-17
 Time: 11:10

Forecast Generation & Load with Actual Generation & Load (25-Jul-2017).



Yours faithfully,

Sign:
Tshering Yangzom

		26-Jul-16



ལྷན་སྐྱོང་གི་ལས་འཛིན།

Bhutan Power Corporation Ltd.
Bhutan Power System Operator
Thimphu: Bhutan



Message No.: Enter your message number
From: Shift In-charge, Control Room

Date: 26-Jul-17
Time: 11:10

To Forecast Generation & Load with Actual Generation & Load (25-Jul-2017).
Managing Director, BPC. Email: gemtshering@bpc.bt
Director, O&MD, DGPC. Email: director.umd@drukgreen.com
General Manager, TD, BPC. Email: thinleygyeltshen@bpc.bt
General Manager, DCSD, BPC. Email: sandeprai@bpc.bt
General Manager, BPSO, BPC. Email: ujjwaldahal@bpc.bt

Sub: Load Generation Balance Report from 00:00hrs to 09:00hrs (26-Jul-2017).

Hours (BST)	Forecast		Actual	
	Generation	Load	Generation	Load
0:00	1727.3	227.3	1734.2	254.57
0:15	1727.2	227.2	1727.5	258.43
0:30	1728	228	1729.3	253.95
0:45	1726.9	226.9	1724.1	256.30
1:00	1727.7	227.7	1725.8	254.69
1:15	1728	228	1722.6	246.64
1:30	1728.4	228.4	1723.8	227.80
1:45	1728	228	1726.8	219.11
2:00	1728.4	228.4	1726.3	240.96
2:15	1726.9	226.9	1722.4	248.66
2:30	1727.9	227.9	1726.1	246.47
2:45	1728.3	228.3	1721.9	247.88
3:00	1728.2	228.2	1725.9	246.16
3:15	1728	228	1726.7	245.84
3:30	1726.8	226.8	1723.2	231.57
3:45	1728.6	229.4	1726.7	238.75
4:00	1726.1	226.1	1730.4	246.46
4:15	1728.6	229	1731.8	244.41
4:30	1728.6	231	1733.8	242.36
4:45	1728.6	229.7	1731.3	242.94
5:00	1728.6	232	1732.3	246.91
5:15	1728.6	233.6	1732.2	242.45
5:30	1728.6	239.8	1736.6	240.39
6:45	1728.6	243.2	1738.3	250.75
6:00	1728.6	243	1735.6	256.03
6:15	1728.6	244.8	1737.9	263.33
6:30	1728.6	247.9	1735.5	266.81
6:45	1728.6	247.6	1732.3	272.70
7:00	1728.6	247.7	1733.0	274.35
7:15	1728.6	248	1732.7	264.70
7:30	1728.6	246.4	1740.3	270.90
7:45	1728.6	246.1	1723.9	269.28
8:00	1728.6	246	1728.5	266.06
8:15	1728.6	246	1724.6	261.90
8:30	1728.6	247.2	1730.2	255.24
8:45	1728.6	245.4	1735.1	260.73
9:00	1728.6	246.6	1727.3	257.50

276.27	26-Jul-16
258.23 MW	
344.02 MW	18-Mar-17

Yours faithfully,

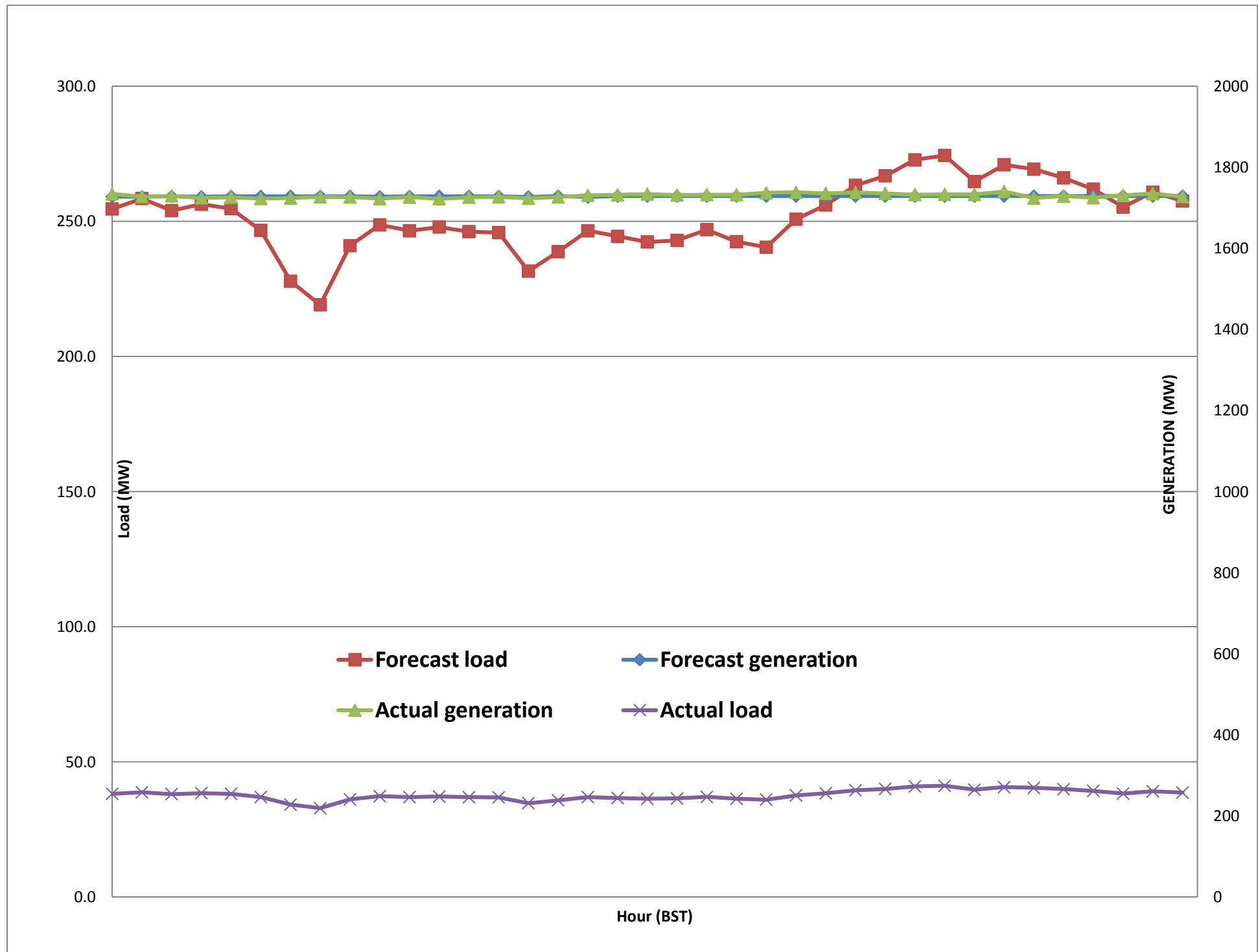
Sign:
Tshering Yangzom



Message No.: Enter your message number
 From: Shift In-charge, Control Room

26-Jul-17
 11:06

Forecast Generation & Load with Actual Generation & Load of Today from 00:00hrs to 09:00hrs(26-Jul-2017).





འབྲུག་གྲོག་ལས་ཁུངས་ལྷན་ཁག།
Bhutan Power Corporation Ltd.
Bhutan Power System Operator
 Thimphu: Bhutan



Message No.: Enter your message number
From: Shift In-charge, Control Room
Date: 26-Jul-17
Time: 11:06

To: Forecast Generation & Load with Actual Generation & Load (25-Jul-2017).
 Managing Director, BPC. Email: gemtshering@bpc.bt
 Director, O&MD, DGPC. Email: director.umd@drukgreen.com
 General Manager, TD, BPC. Email: ktobgye@bpc.bt
 General Manager, BPSO, BPC. Email: ujjwaldahal@bpc.bt
 Advisor, BPC. Email: bharattamang@bpc.bt

Sub: Scheduled Generation and Forcast Load of Tomorrow (27-Jul-2017).

Kindly find scheduled generation (MW) and load forecast (MW)

 ###

Hours (BST)	Forecast		Hours (BST)	Forecast	
	Generation	Load		Generation	Load
0:00	1743.4	229.7	12:00	1743.4	242.9
0:15	1743.4	230.6	12:15	1743.4	236.6
0:30	1743.4	230.7	12:30	1743.4	222.3
0:45	1743.4	230.1	12:45	1743.4	239.3
1:00	1743.4	230.5	13:00	1743.4	240.4
1:15	1743.4	230.2	13:15	1743.4	237.2
1:30	1743.4	230.7	13:30	1743.4	234
1:45	1743.4	229.9	13:45	1743.4	232
2:00	1743.4	230.9	14:00	1743.4	236.4
2:15	1743.4	230.4	14:15	1743.4	237.6
2:30	1743.4	229.4	14:30	1743.4	239.2
2:45	1743.4	229.7	14:45	1743.4	240.3
3:00	1743.4	229	15:00	1743.4	238.5
3:15	1743.4	229.2	15:15	1743.4	240.1
3:30	1743.4	227.8	15:30	1743.4	239.4
3:45	1743.4	230.2	15:45	1743.4	239
4:00	1743.4	229.3	16:00	1743.4	236.3
4:15	1743.4	232.2	16:15	1743.4	239.2
4:30	1743.4	233.3	16:30	1743.4	239.8
4:45	1743.4	232.2	16:45	1743.4	237.6
5:00	1743.4	234.1	17:00	1743.4	244.3
5:15	1743.4	236.3	17:15	1743.4	245.2
5:30	1743.4	241	17:30	1743.4	246.4
6:45	1743.4	244.7	17:45	1743.4	247.4
6:00	1743.4	245.6	18:00	1743.4	250.3
6:15	1743.4	245.6	18:15	1743.4	252.9
6:30	1743.4	250.8	18:30	1743.4	254.4
6:45	1743.4	252.3	18:45	1743.4	257.2
7:00	1743.4	252.7	19:00	1743.4	260.1
7:15	1743.4	252.6	19:15	1743.4	265.8
7:30	1743.4	251.6	19:30	1743.4	270.9
7:45	1743.4	246.9	19:45	1743.4	269.3
8:00	1743.4	249.2	20:00	1743.4	265.7
8:15	1743.4	251.5	20:15	1743.4	266.1
8:30	1743.4	252.5	20:30	1743.4	263.7
8:45	1743.4	251	20:45	1743.4	262.7
9:00	1743.4	253.4	21:00	1743.4	260
9:15	1743.4	253.4	21:15	1743.4	255.6
9:30	1743.4	255.5	21:30	1743.4	253.4
9:45	1743.4	251.8	21:45	1743.4	251.8
10:00	1743.4	251.6	22:00	1743.4	246.8
10:15	1743.4	252.9	22:15	1743.4	245
10:30	1743.4	247.6	22:30	1743.4	242.9
10:45	1743.4	243.5	22:45	1743.4	243.2
11:00	1743.4	241.2	23:00	1743.4	240.4
11:15	1743.4	245.1	23:15	1743.4	238.9
11:30	1743.4	247.2	23:30	1743.4	237.5
11:45	1743.4	243.7	23:45	1743.4	235

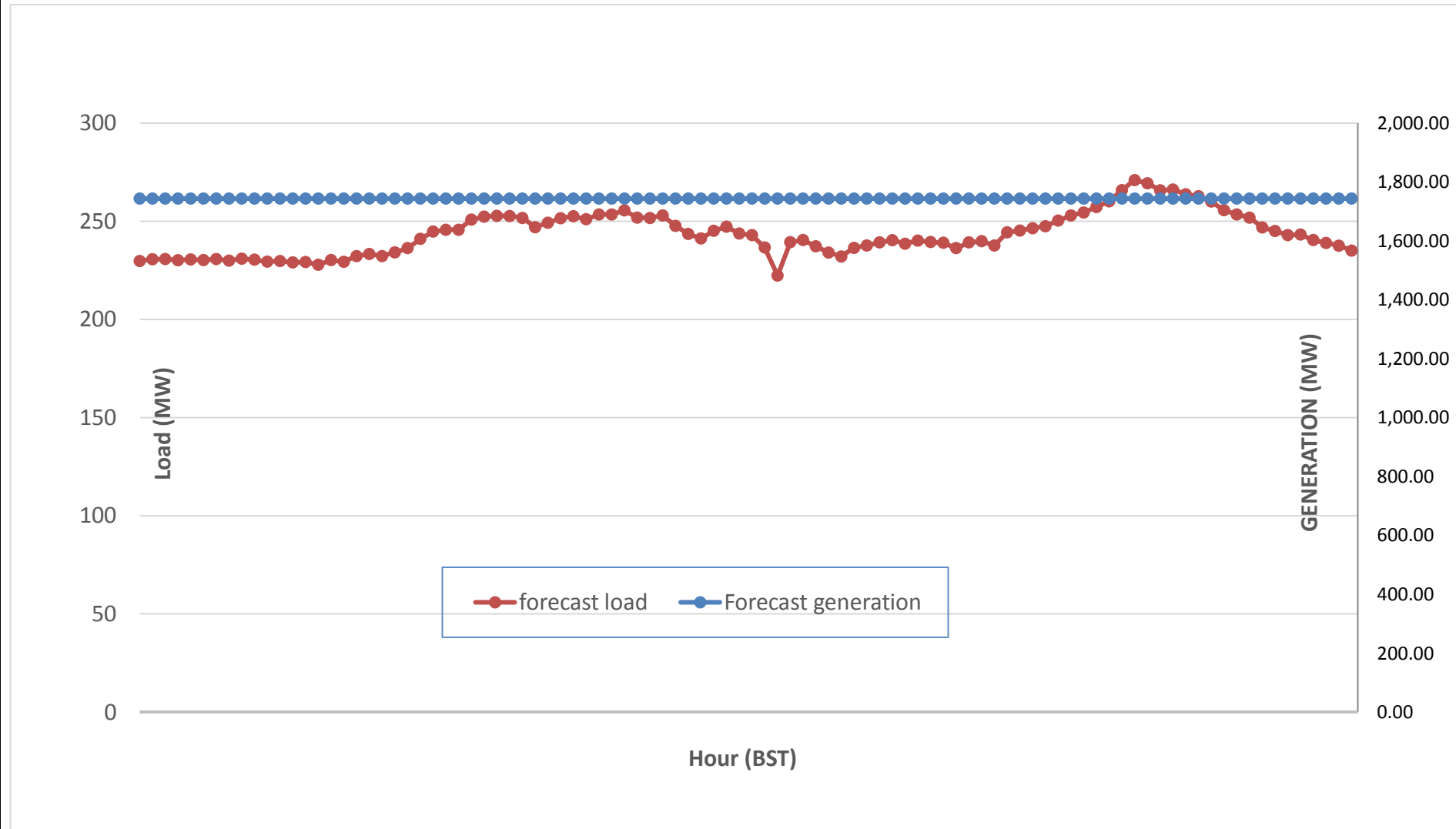
Yours faithfully,
 Sign:
 Tshering Yangzom



Message No.: Enter your message number
 From: Shift In-charge, Control Room

Date: 26-Jul-17
 Time: 11:16

Scheduled Generation & Load Forecast for Tomorrow (27-Jul-2017).



Yours faithfully,

[Signature Box]

Sign:
Tshering Yangzom