



འབྲུག་གྲོག་མེ་ལས་འཛིན།

Bhutan Power Corporation Ltd.  
Bhutan Power System Operator  
Thimphu: Bhutan



Message No.: Enter your message number  
From: Shift In-charge, Control Room

Date: 7-Jul-17  
Time: 12:15

To: Forecast Generation & Load with Actual Generation & Load (06-Jul-2017).  
Managing Director, BPC. Email: gemtshering@bpc.bt  
Director, O&MD, DGPC. Email: director.umd@drukgreen.com  
General Manager, TD, BPC. Email: ktobgye@bpc.bt  
General Manager, DCSD, BPC. Email: sandeeprai@bpc.bt  
General Manager, BPSO, BPC. Email: ujjwaldahal@bpc.bt

Sub: Load Generation Balance Report of Yesterday (06-Jul-2017).

Hours (BST)	Forecast		Actual		Hours (BST)	Forecast		Actual	
	Generation	Load	Generation	Load		Generation	Load	Generation	Load
0:00	1731.3	260.2	1720.3	265.56	12:00	1731.3	266.8	1705.6	251.68
0:15	1731.3	258	1723.4	267.06	12:15	1731.3	266	1705.6	251.68
0:30	1731.3	260.6	1723.2	268.83	12:30	1731.3	256.6	1710.7	254.93
0:45	1731.3	260.2	1720.9	269.28	12:45	1731.3	256.3	1707.4	242.10
1:00	1731.3	262.8	1719.9	262.05	13:00	1731.3	253.6	1709.1	256.02
1:15	1731.3	262.1	1717.3	261.02	13:15	1731.3	257.1	1710.8	259.45
1:30	1731.3	255.3	1717.2	260.83	13:30	1731.3	257	1709.9	253.08
1:45	1731.3	254.4	1717.6	258.24	13:45	1731.3	256.3	1708.2	247.60
2:00	1731.3	255.4	1724.8	260.40	14:00	1731.3	256.6	1709.6	259.63
2:15	1731.3	255.6	1726.3	260.57	14:15	1731.3	254.3	1707.9	260.05
2:30	1731.3	263.4	1709.6	256.99	14:30	1731.3	253.2	1712.1	260.63
2:45	1731.3	260.5	1694.8	249.43	14:45	1731.3	250.3	1706.1	266.91
3:00	1731.3	258.6	1696.9	251.70	15:00	1731.3	248	1712.8	268.36
3:15	1731.3	261.2	1695.0	257.08	15:15	1731.3	245.3	1707.3	273.13
3:30	1731.3	260	1687.9	254.03	15:30	1731.3	239.4	1709.9	273.24
3:45	1731.3	261.8	1692.3	247.25	15:45	1731.3	241.6	1710.8	272.94
4:00	1731.3	262.4	1694.9	255.98	16:00	1731.3	240	1710.0	271.84
4:15	1731.3	264.1	1693.4	257.43	16:15	1731.3	241.8	1711.7	272.55
4:30	1731.3	264.3	1691.8	258.30	16:30	1731.3	243.6	1709.0	269.45
4:45	1731.3	265.9	1693.1	257.79	16:45	1731.3	242.3	1711.7	269.55
5:00	1731.3	267.3	1701.2	260.79	17:00	1731.3	244.9	1713.5	267.80
5:15	1731.3	273.2	1702.5	269.07	17:15	1731.3	244.5	1710.4	265.39
5:30	1731.3	277.8	1707.6	272.69	17:30	1731.3	253.4	1709.5	269.48
6:45	1731.3	280.7	1702.5	278.05	17:45	1731.3	262.7	1714.3	270.92
6:00	1731.3	283.5	1696.0	276.75	18:00	1731.3	264.6	1714.1	277.88
6:15	1731.3	285.4	1710.7	265.02	18:15	1731.3	268.8	1713.5	275.05
6:30	1731.3	293.2	1711.2	277.30	18:30	1731.3	275.3	1717.7	281.85
6:45	1731.3	291.4	1708.1	284.02	18:45	1731.3	279.7	1715.4	284.38
7:00	1731.3	295.1	1707.3	288.52	19:00	1731.3	286.6	1712.9	293.94
7:15	1731.3	289.8	1709.5	288.05	19:15	1731.3	291.9	1713.4	301.02
7:30	1731.3	291.3	1704.8	286.88	19:30	1731.3	295.1	1712.5	300.12
7:45	1731.3	290.5	1705.3	279.13	19:45	1731.3	292.2	1711.8	297.51
8:00	1731.3	281.9	1707.6	272.53	20:00	1731.3	290.7	1713.4	293.85
8:15	1731.3	289.1	1704.1	277.27	20:15	1731.3	295.1	1713.6	292.95
8:30	1731.3	284.6	1705.1	271.22	20:30	1731.3	291.3	1713.9	297.46
8:45	1731.3	282.5	1701.8	259.60	20:45	1731.3	288.7	1714.0	296.60
9:00	1731.3	280.8	1697.8	272.27	21:00	1731.3	287.4	1714.0	295.48
9:15	1731.3	271.4	1698.2	267.76	21:15	1731.3	286.2	1713.5	295.16
9:30	1731.3	270.9	1697.8	266.86	21:30	1731.3	281.3	1713.7	291.77
9:45	1731.3	274.7	1695.2	264.36	21:45	1731.3	279.8	1713.8	291.91
10:00	1731.3	271.6	1699.4	263.30	22:00	1731.3	276.6	1713.6	290.57
10:15	1731.3	277.6	1696.0	266.66	22:15	1731.3	272.2	1713.9	293.23
10:30	1731.3	267.4	1695.1	267.42	22:30	1731.3	274.1	1698.2	282.61
10:45	1731.3	267	1700.7	258.41	22:45	1731.3	267	1713.7	292.08
11:00	1731.3	269.2	1707.2	250.59	23:00	1731.3	269	1713.3	292.52
11:15	1731.3	276.5	1705.6	251.68	23:15	1731.3	266	1713.8	293.13
11:30	1731.3	272.5	1705.6	251.68	23:30	1731.3	264.9	1713.7	291.48
11:45	1731.3	272.6	1705.6	251.68	23:45	1646.2	266.6	1713.5	292.25

Remarks-no forecast generation and load due to problem with RSC

Yours faithfully,

Sign:  
Tshering Choden

Coincidental peak load of Day(Last year):	
259.87MW	6-Jul-16
Maximum Load till date:	
344.02 MW	18-Mar-17



འབྲུག་གྲོག་མེ་ལས་འཛིན།

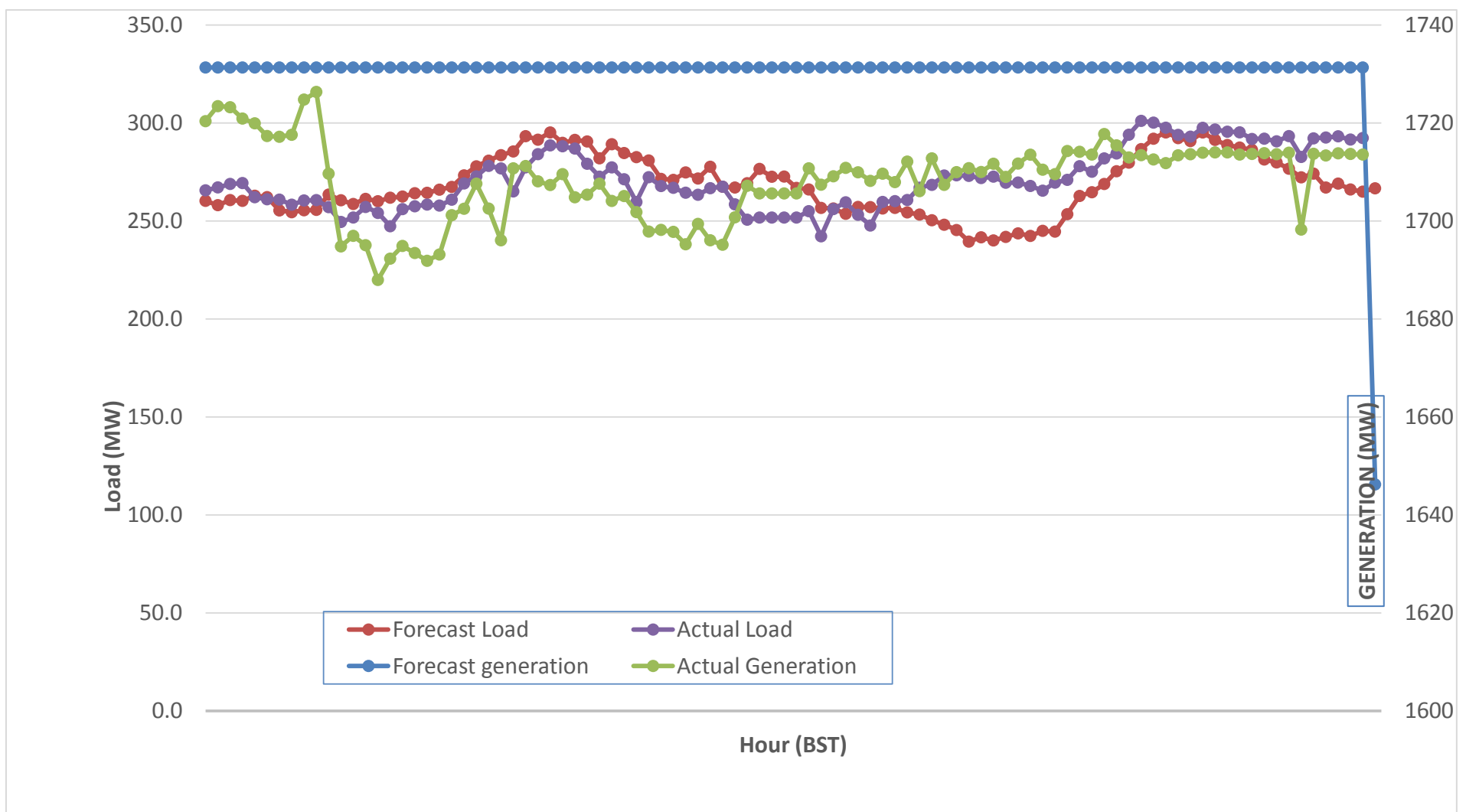
Bhutan Power Corporation Ltd.  
 Bhutan Power System Operator  
 Thimphu: Bhutan



Message No.: Enter your message number  
 From: Shift In-charge, Control Room

Date: 7-Jul-17  
 Time: 12:15

**Forecast Generation & Load with Actual Generation & Load (06-Jul-2017).**



Yours faithfully,

Sign:  
**Tshering Choden**

	<b>Coincidental peak load of Day(Last year):</b>	
	259.87MW	6-Jul-16

<b>Maximum Load till date:</b>	
344.02 MW	18-Mar-17

Telephone: +975-02335631; Fax: +975-02335632; Email: bhutansystemoperator@bpc.bt; www.bpc.bt



འབྲུག་གྲོག་མེ་ལས་འཛིན།

Bhutan Power Corporation Ltd.  
Bhutan Power System Operator  
Thimphu: Bhutan



Message No.: Enter your message number  
From: Shift In-charge, Control Room

Date: 7-Jul-17  
Time: 11:44

To Forecast Generation & Load with Actual Generation & Load (06-Jul-2017).  
Managing Director, BPC. Email: gemtshering@bpc.bt  
Director, O&MD, DGPC. Email: director.umd@drukgreen.com  
General Manager, TD, BPC. Email: thinleygyeltshen@bpc.bt  
General Manager, DCSD, BPC. Email: sandeprai@bpc.bt  
General Manager, BPSO, BPC. Email: ujjwaldahal@bpc.bt

Sub: Load Generation Balance Report from 00:00hrs to 09:00hrs (07-Jul-2017).

Hours (BST)	Forecast		Actual	
	Generation	Load	Generation	Load
0:00	1720.1	263.8	1713.6	293.66
0:15	1720.1	264.2	1713.7	294.80
0:30	1720.1	265.4	1713.8	295.63
0:45	1720.1	263.7	1713.8	296.91
1:00	1720.1	268.8	1713.7	296.30
1:15	1720.1	264.6	1713.1	296.74
1:30	1720.1	258.9	1713.2	296.62
1:45	1720.1	258.5	1713.2	295.63
2:00	1720.1	259.7	1713.1	297.77
2:15	1720.1	259.8	1713.0	299.17
2:30	1720.1	266	1712.7	298.84
2:45	1720.1	263.9	1712.9	298.49
3:00	1720.1	262.4	1712.8	300.33
3:15	1720.1	264.3	1712.8	300.59
3:30	1720.1	263.7	1712.5	301.57
3:45	1720.1	265.6	1712.9	300.38
4:00	1720.1	266	1713.0	300.45
4:15	1720.1	267.4	1713.0	301.18
4:30	1720.1	266.9	1714.7	302.47
4:45	1720.1	268.5	1710.5	303.49
5:00	1720.1	270	1712.6	302.71
5:15	1720.1	275.3	1713.7	304.58
5:30	1720.1	279.3	1697.3	298.87
5:45	1720.1	281.5	1712.9	305.62
6:00	1720.1	286.1	1712.8	306.47
6:15	1720.1	287.8	1697.5	287.34
6:30	1720.1	293.8	1692.2	289.43
6:45	1720.1	292.6	1692.2	288.66
7:00	1720.1	295.2	1695.7	290.55
7:15	1720.1	291.1	1698.3	292.13
7:30	1720.1	291.9	1695.0	290.16
7:45	1720.1	290.3	1693.4	282.91
8:00	1720.1	283.6	1692.5	288.95
8:15	1720.1	289.5	1685.9	285.66
8:30	1720.1	284.9	1695.1	285.15
8:45	1720.1	283	1698.2	287.72
9:00	1720.1	283.4	1695.7	282.84

Coincidental peak load of Day(Last year):	
259.87MW	6-Jul-16
258.23 MW	
344.02 MW	18-Mar-17

Yours faithfully,

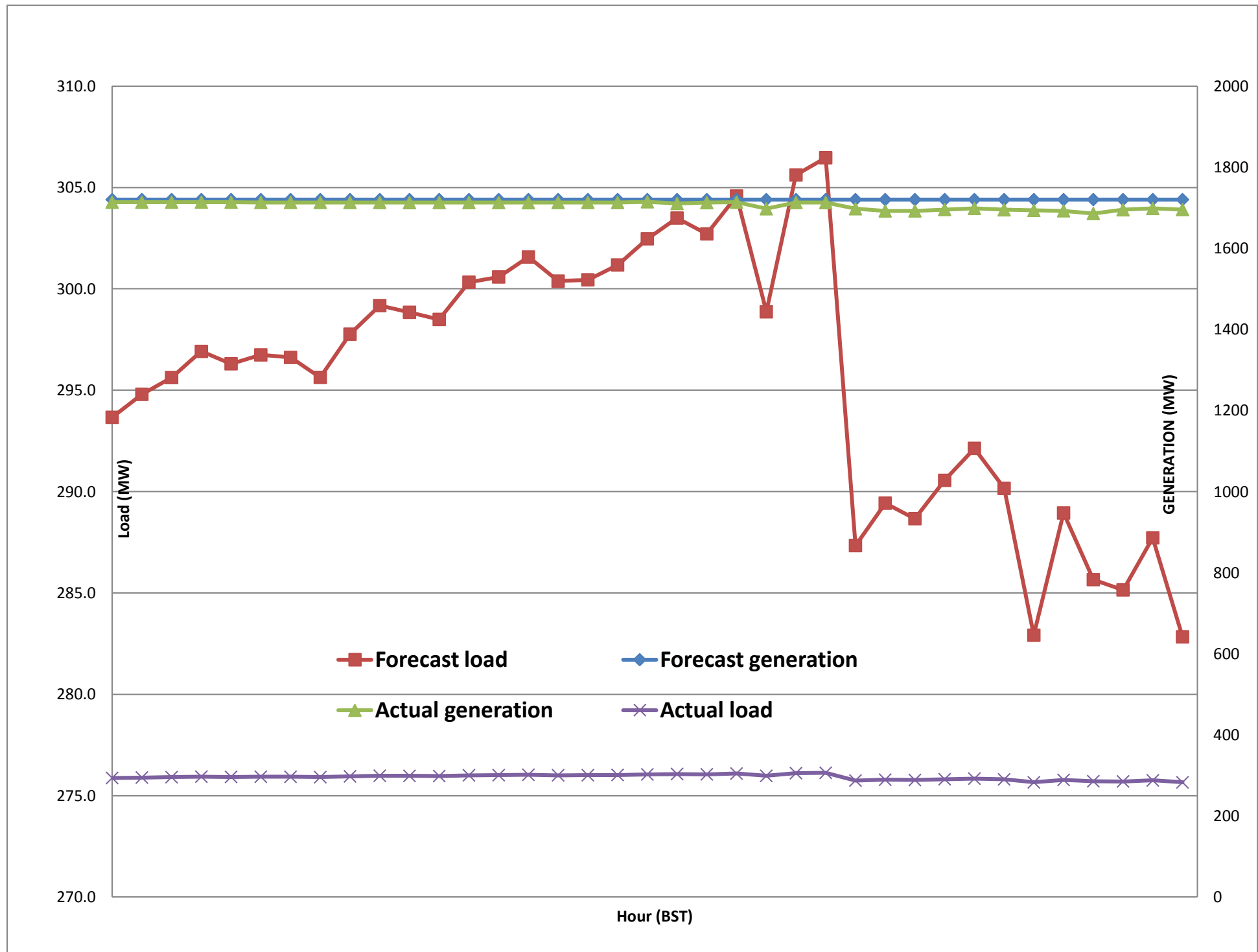
Sign:  
Tshering Choden



Message No.: Enter your message number  
 From: Shift In-charge, Control Room

7-Jul-17  
 10:36

Forecast Generation & Load with Actual Generation & Load of Today from 00:00hrs to 09:00hrs(07-Jul-2017).





འབྲུག་གྲོག་ལས་ཁུངས་ལྷན་ཁག།  
**Bhutan Power Corporation Ltd.**  
**Bhutan Power System Operator**  
 Thimphu: Bhutan



**Message No.:** Enter your message number **Date:** 7-Jul-17  
**From:** Shift In-charge, Control Room **Time:** 10:36

**To:** Forecast Generation & Load with Actual Generation & Load (06-Jul-2017).  
 Managing Director, BPC. Email: gemtshering@bpc.bt  
 Director, O&MD, DGPC. Email: director.umd@drukgreen.com  
 General Manager, TD, BPC. Email: ktobgye@bpc.bt  
 General Manager, BPSO, BPC. Email: ujjwaldahal@bpc.bt  
 Advisor, BPC. Email: bharattamang@bpc.bt

**Sub:** Scheduled Generation and Forcast Load of Tomorrow (08-Jul-2017).

Kindly find scheduled generation (MW) and load forecast (MW)

Hours (BST)	Forecast		Hours (BST)	Forecast	
	Generation	Load		Generation	Load
0:00	1710.3	259.3	12:00	1695.3	274.2
0:15	1710.3	257.2	12:15	1695.3	272.2
0:30	1710.3	259.3	12:30	1695.3	261.7
0:45	1710.3	257.1	12:45	1695.3	260.1
1:00	1710.3	258	13:00	1695.3	259.5
1:15	1710.3	257.1	13:15	1695.3	261.3
1:30	1710.3	251.5	13:30	1695.3	254.5
1:45	1710.3	249.7	13:45	1695.3	258.1
2:00	1710.3	251.3	14:00	1695.3	260
2:15	1710.3	252.3	14:15	1695.3	258.7
2:30	1710.3	256.3	14:30	1695.3	260
2:45	1710.3	250.8	14:45	1695.3	259.6
3:00	1710.3	251.2	15:00	1695.3	258.3
3:15	1710.3	253.5	15:15	1695.3	255.9
3:30	1710.3	253	15:30	1695.3	253.1
3:45	1710.3	253.5	15:45	1695.3	253.9
4:00	1710.3	255.2	16:00	1695.3	252.8
4:15	1710.3	254.9	16:15	1695.3	254.4
4:30	1710.3	255.1	16:30	1695.3	252.8
4:45	1710.3	257	16:45	1695.3	252.4
5:00	1710.3	258.1	17:00	1695.3	253.4
5:15	1710.3	264.6	17:15	1695.3	253.5
5:30	1710.3	268.6	17:30	1710.3	261.6
6:00	1710.3	271	17:45	1710.3	266.4
6:15	1710.3	275.5	18:00	1710.3	269.1
6:30	1710.3	274	18:15	1710.3	272.2
6:45	1710.3	276.8	18:30	1710.3	277.6
7:00	1710.3	281.7	18:45	1710.3	281.3
7:15	1710.3	280.6	19:00	1710.3	287.6
7:30	1695.3	280.5	19:15	1710.3	290.4
7:45	1695.3	279.8	19:30	1710.3	297
8:00	1695.3	275.1	19:45	1710.3	293.7
8:15	1695.3	275	20:00	1710.3	292.2
8:30	1695.3	274.9	20:15	1710.3	292.8
8:45	1695.3	273.3	20:30	1710.3	292.2
9:00	1695.3	268.7	20:45	1710.3	290.8
9:15	1695.3	272.7	21:00	1710.3	288.9
9:30	1695.3	284.9	21:15	1710.3	288.4
9:45	1695.3	285.4	21:30	1710.3	285.3
10:00	1695.3	287.9	21:45	1710.3	283.4
10:15	1695.3	274.3	22:00	1710.3	282.8
10:30	1695.3	278.6	22:15	1710.3	279.6
10:45	1695.3	271.9	22:30	1710.3	277.5
11:00	1695.3	274.1	22:45	1710.3	275.5
11:15	1695.3	274.4	23:00	1710.3	277.7
11:30	1695.3	281.6	23:15	1710.3	274.8
11:45	1695.3	277.8	23:30	1710.3	273.5
		278	23:45	1710.3	275.9

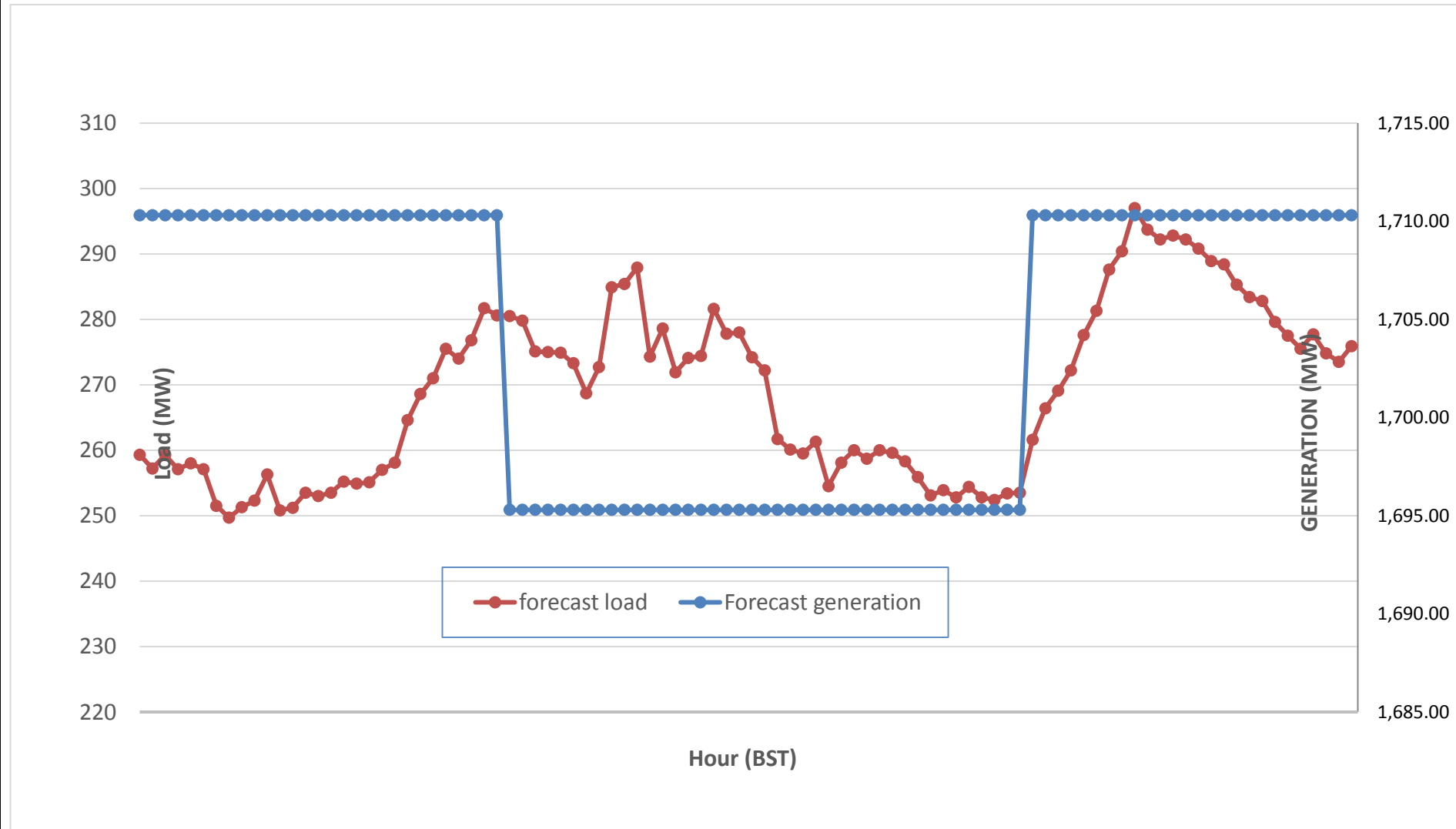
Yours faithfully,  
 Sign:  
 Tshering Choden



Message No.: Enter your message number  
 From: Shift In-charge, Control Room

Date: 7-Jul-17  
 Time: 10:36

**Scheduled Generation & Load Forecast for Tomorrow (08-Jul-2017).**



Yours faithfully,

Sign:  
**Phub Zam**

	MW
Scheduled Peak Generation(08-Jul-2017).	376.90
Forecast Peak Load(08-Jul-2017).	300.60